



NATIONAL FREIGHT STRATEGIC PLAN



PROJECT OVERVIEW AND SCOPE

USDOT is developing a national freight strategy that will:

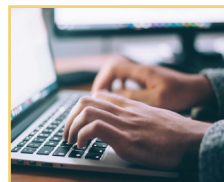
- Evaluate the movement of freight produced by American energy, agriculture, manufacturing, and natural resources industries
- Inform infrastructure planning, coordinate investments, and support future freight efficiencies that improve shippers' experience
- Provide a framework for increased cross-sector, multi-jurisdictional, and multimodal coordination and partnerships
- Identify freight data needs to support decision-making

KEY QUESTIONS

Opportunity to help inform national freight strategy

- What are the key challenges facing the U.S. freight transportation system?
- How should U.S. DOT measure freight transportation system performance?
- What industry freight-specific data is important to understanding how economic trends impact freight logistics and cargo movements?
- What approach should the federal government use to invest in the multimodal freight system?

HOW TO PROVIDE INPUT



U.S. DOT is seeking input from public and private transportation stakeholders including state and local agencies, industry trade groups, and shippers to aid development of the NFSP.

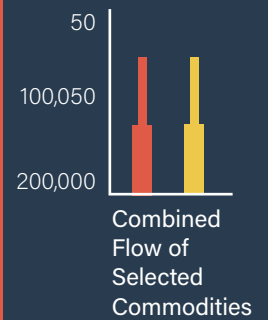
- Provide feedback at <http://www.regulations.gov>, Docket Number DOT-OST-2019-0184 by February 10, 2020.
- Mail in or hand deliver feedback to Docket Management Facility; U.S. Department of Transportation, 1200 New Jersey Avenue SE, Room PL-401, Washington, DC 20590-0001
- Email responses to key questions to freightstrategy@dot.gov

2015 Yearly FAF Truck Tonnage Flow: Comparison of Agriculture, Energy, Natural Resources, Manufacturing Commodities and Total Flow: National Highway System



Total Tonnage:
11,396,000 Kton
**Tonnage Selected
Commodities:**
7,316,300 Kton
Percent Share:
64%

**Scale: FAF
Ktons/Year**
2015 Total Flow



Note: Major flows include domestic and international freight moving by truck on highway segments with more than 50 miles commodity trip length. Links are shown for the National Highway System only.

Data Source: U.S. Department of Transportation
Bureau of Transportation Statistics and Federal
Highway Administration Freight Analysis Framework
version 4.3, 2018.

