

Safety Data Integration and Uses in Tennessee

USDOT Safety Data Forum

June 14, 2018

Washington, D.C.



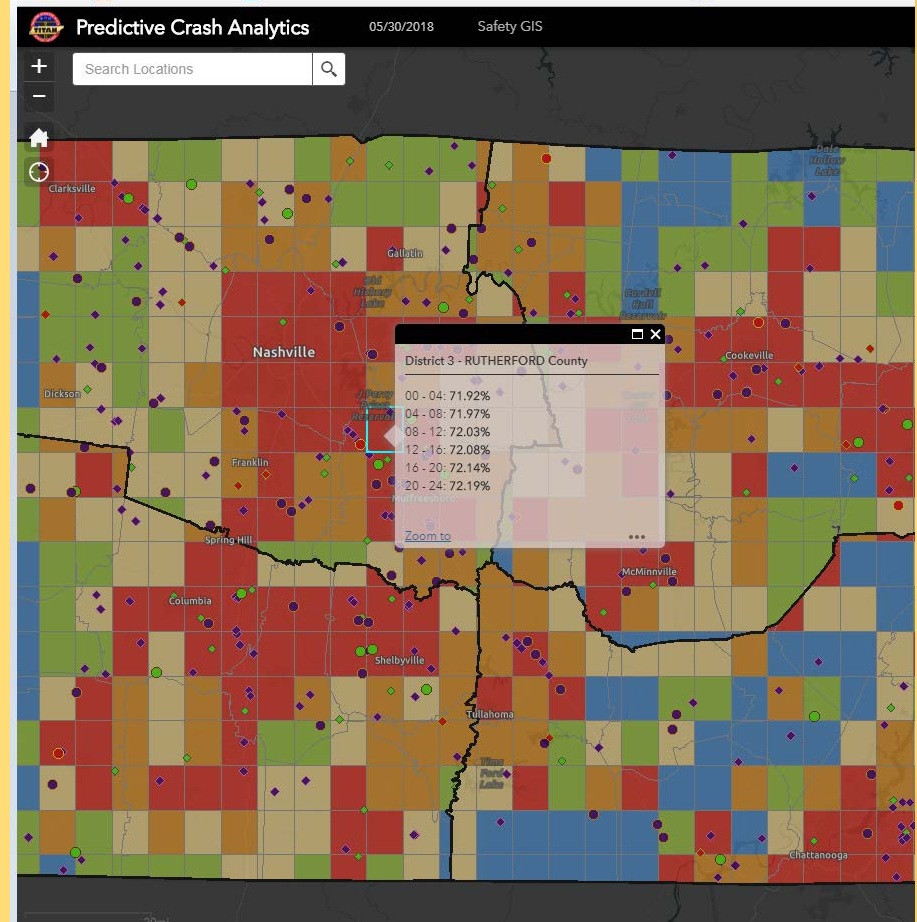
Current Efforts

- Predictive Analytics
 - Crash
 - Impaired Driving
 - Commercial Vehicle
- Data Integration
 - Roadway
 - Health



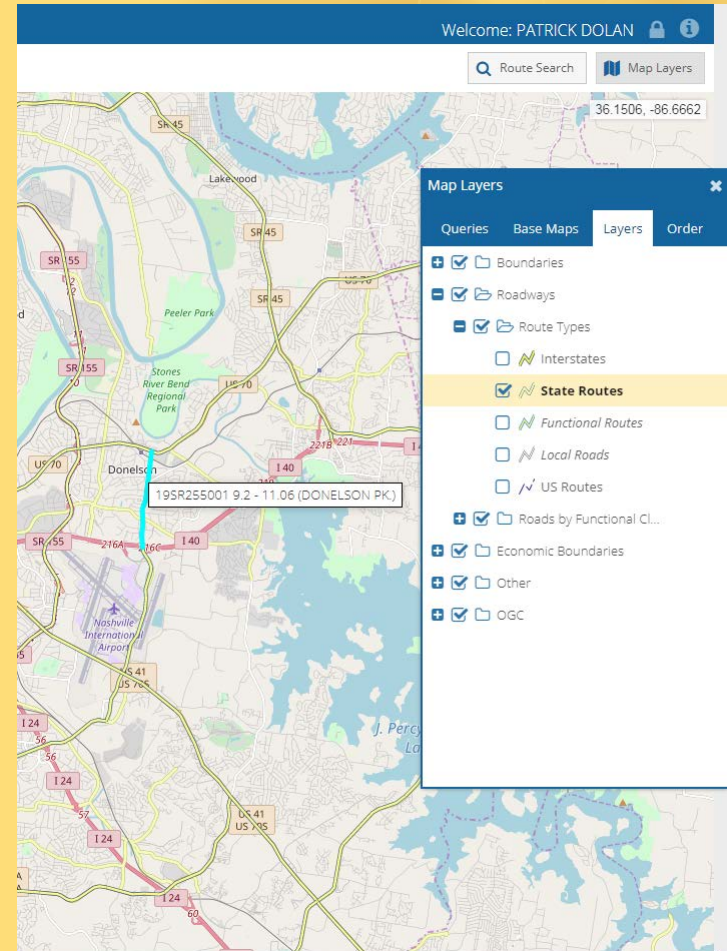
Predictive Analytics

- Law Enforcement Resource Allocation Tool
- Targeted enforcement at the right places and times



Data Integration

- Crash/Roadway Integration
 - Crash data into TRIMS
 - LRS data into TITAN
- Support TDOT roadway improvement research
- Additional location identifiers and roadway data elements in TITAN



Data Integration

- Crash/Health Integration
 - New initiative
- Understand the true severity of crash related injuries
- Provide better information to policy makers and the public



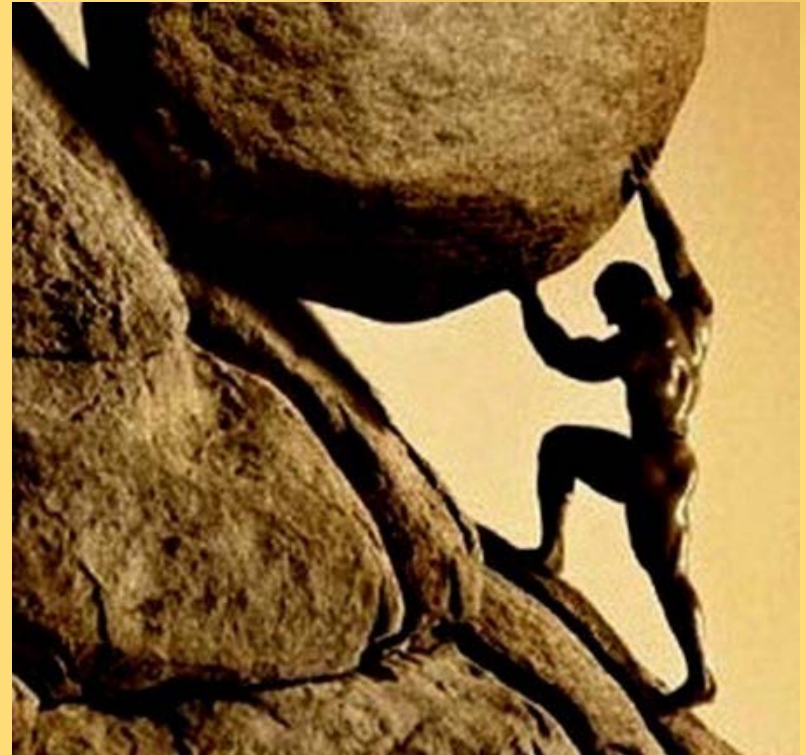
Requirements

- Predictive Analytics
 - Quality location data
 - Dedicated staff
 - Modeling software
- Data Integration
 - Inter-agencies agreements
 - Automated electronic transfer and merging



Challenges

- Predictive Analytics
 - Retain skilled employees
 - User buy in
- Data Integration
 - Data quality
 - Legal requirements
 - Cooperation among data custodians



Results

- Predictive Analytics
 - Steadily decreasing fatality rate
 - Decrease THP response times by 33%
- Data Integration
 - Improved data quality
 - Better location based analysis of crash data



Patrick Dolan
Statistics Office Manager
Tennessee Highway Patrol
615-743-4993
patrick.dolan@tn.gov

