



U.S. Department of Transportation
Federal Highway Administration

Office of Safety Research and Development

SHRP2 Naturalistic Driving Study Safety Countermeasures from Big Data

James Pol, PE, PMP
FHWA Office of Safety R&D
June 14, 2018



NDS DATA



3,000 +
Participants



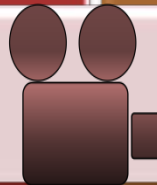
5.4 Million
trips – 30+
million miles



Passenger
car, Van,
SUV, Pickup



1,465
crashes



1 Million hours continuously recorded video
(exposure data)

MAKING PRACTICAL USE OF SHRP2 DATA

8 BAA Projects awarded;
6 projects 'advanced' to Phase 2

Performing Organization	Topic	Partner State(s)
MRIGlobal	Speed	MO
CUBRC	Enforcement	NY
Iowa State University	Rural Intersections	IA / MN / WI / MI
University of Michigan	Work Zones	MI
TransAnalytics, Inc.	Vulnerable Road Users	MD, FL, IA
University of Missouri	Work Zones	MO

<http://www.pooledfund.org/Details/Study/613>

Six State DOTs to date: AL , CT , IA , IL , NV , WA

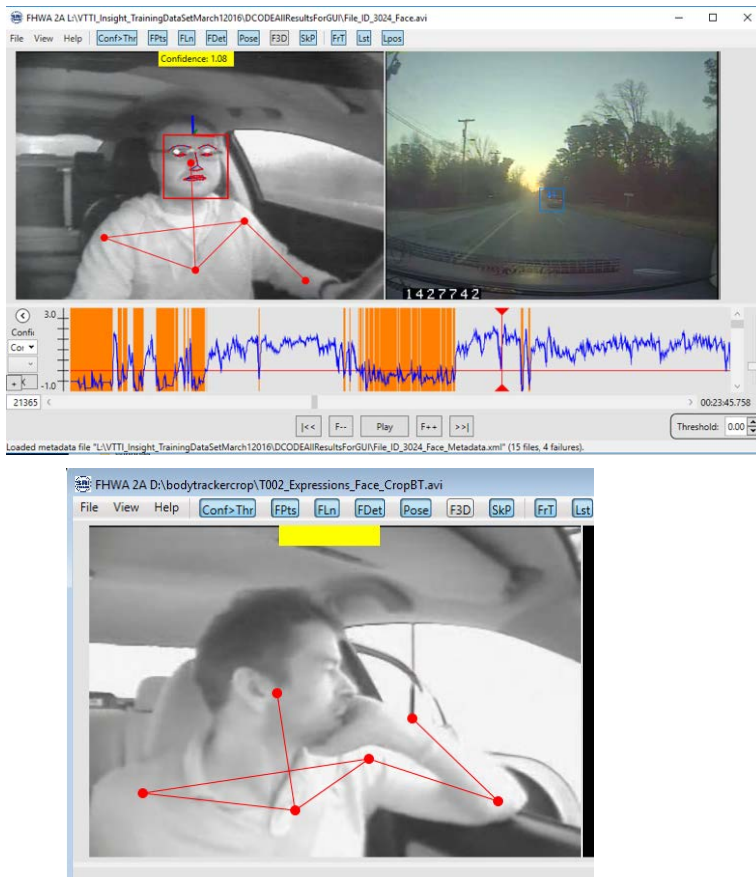
Three FHWA Offices (Office Safety R&D; Office Operations;
Office Planning, Environment & Reality)

> \$2M to date; 5 years (Until 2022)

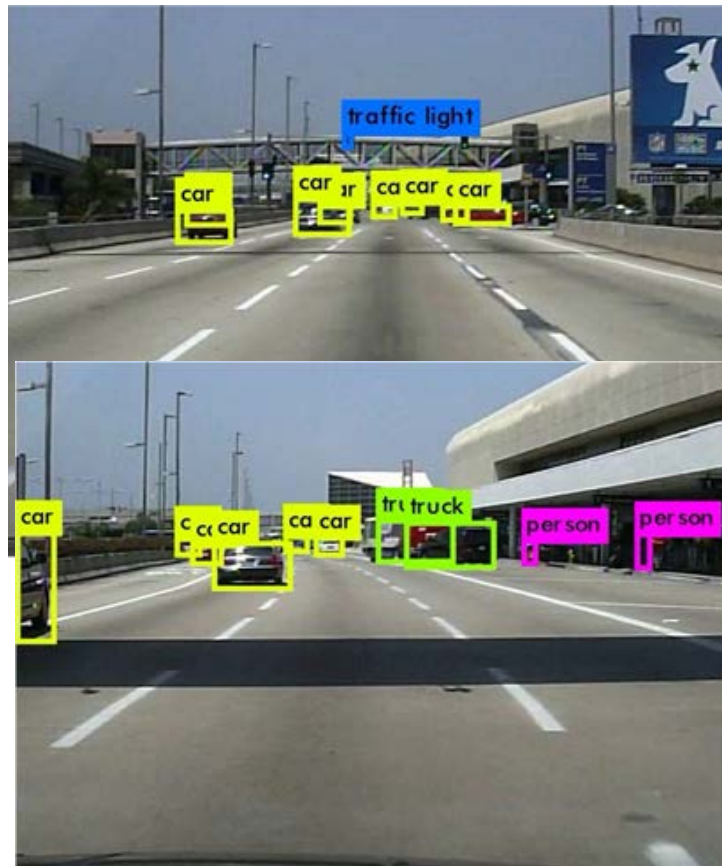
Naturalistic Driving Study
Pooled Fund Program

AI TOOLS FOR ANALYSIS

In-Cab Automated Feature Extraction



External Automated Feature Extraction



NDS Subject Automated Identity Masking

