



## Section 508 Compliance: Ensuring Accessible Technology & Information

### 2016 Civil Rights Virtual Symposium

Maria Roat  
Chief Technology Officer  
March 2016



## Section 508 of the Rehabilitation Act of 1973

*All Electronic and Information Technology purchased, developed, maintained or used by the DOT must be accessible to individuals with disabilities – employees and members of the public*

*Advances in technology are equalizers for people with disabilities who are employees, job seekers, or users of DOT content*

## By the Numbers

**10**

Section 508  
Coordinators

**315K**

Internet pages

**68K**

Intranet pages

**3.5M**

Monthly/weekly web  
scans in a year

**1.7K**

Multi-media files  
evaluated

**480**

Electronic  
Documents  
Evaluated

**78%**

Internet web  
page  
compliance

**100%**

Procurement  
solicitations  
evaluated  
conformant

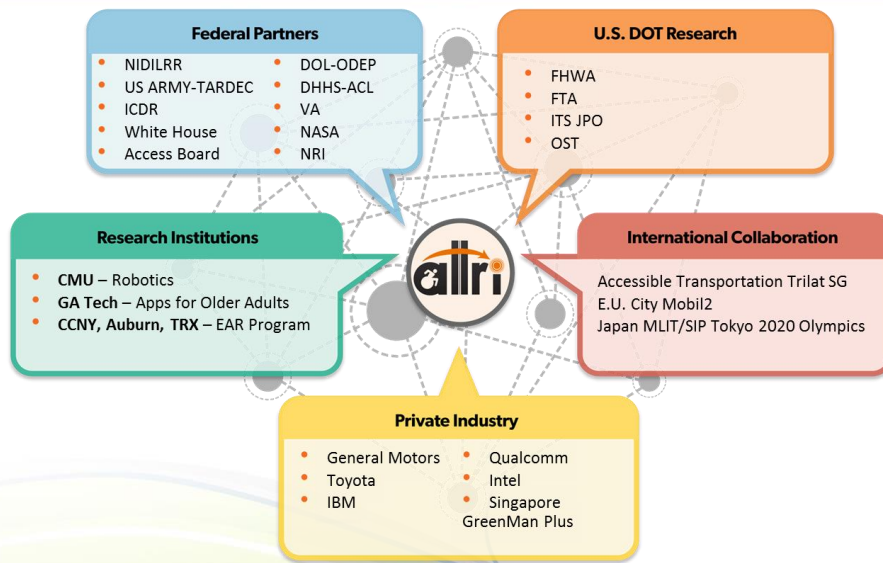
## Leading Change & Innovation - *An Enterprise Approach*

- **Leveraging the Cloud**
  - Skype for Business
  - Video Remote Interpreting
- **Supporting the Federal Community**
  - FMCSA & FAA's Accessibility Tutorial Video's
- **Training to be Trusted Testers**
  - FHWA National Highway Institute
- **Highlighting Technology**
  - Mobile Learning Showcase
- **Integrating Data**
  - Open Data and Services

## Accessible Transportation Technologies Research Initiative

- A U.S. DOT Multi-Year, Multimodal, Multi-Agency Research and Development Effort
- Identifying user needs of travelers with disabilities to develop new transformative applications to increase personal mobility
- Building collaborative research and deployment partnerships with other US and International research communities, both public and private
- Unique opportunity to develop and deploy novel applications for accessible transportation and extend those benefits to all travelers

## Strong Partnerships



# Challenges & Opportunities

76% people with disabilities say adequate transportation is important to their job search  
29% consider it a significant problem in accessing jobs <sup>[1]</sup>

## Targeted Populations



Persons with Disabilities



Veterans with Disabilities



Older Adults

## Types of Disabilities



Vision



Mobility



Hearing



Cognitive

## Enabling Technologies

ITS,  
Wireless  
& Sensors

Connected  
Vehicles

Automated  
Vehicles/ Personal  
Mobility

Robotics,  
Artificial  
Intelligence

Accessible  
Data

# Technology Scan Recommendations for ATTRI



## Wayfinding & Navigation Solutions

- Focus on integration of map data and standardized infrastructure descriptions from various sources
- New data unique and specific to ATTRI users should be developed



## ITS & Assistive Technologies

- Focus on remote assistance for stakeholders and opportunities to inform and aid barrier traversal
- Modernizing assistive technology maintenance and asset management (area for advanced research)



## Automation & Robotics

- Shared neighborhood autonomous vehicles which are cost effective and aid at traversing distances between transit stops, homes, and places of employment.
- Assist service models, electric vehicles, and autonomous vehicles create opportunities for novel accessible designs



## Data Integration

- Reduce complexity and identify coordination in service matchmaking through open data and services
- Develop environment for community generated data



## Enhanced Human Services Transportation

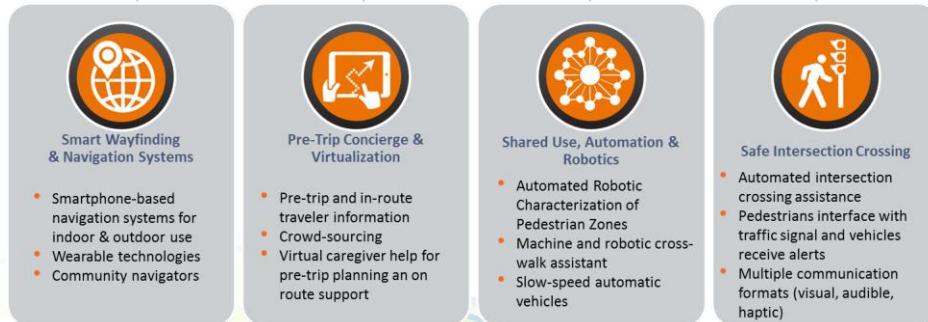
- Support initiatives by ridersharing services to involve ATTRI stakeholders and develop accessible versions of these services.
- Support mode shift through private on-demand ride services

Final Report  
Due: Spring 2016



# Considerations

## Foundational Considerations



# Thank you!

Maria Roat  
Chief Technology Officer  
DOT Section 508 Coordinator  
[maria.roat@dot.gov](mailto:maria.roat@dot.gov)