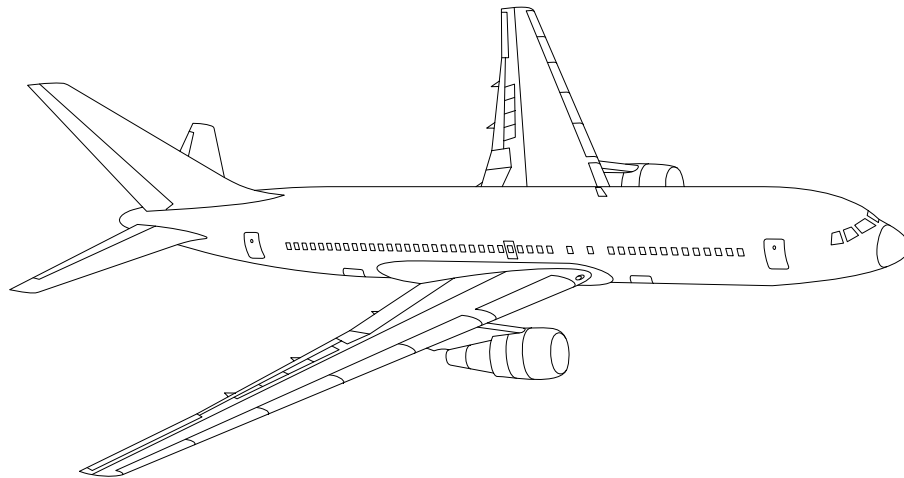


# AIRLINE QUARTERLY FINANCIAL REVIEW

SECOND QUARTER 2014



MAJORS



DEPARTMENT OF TRANSPORTATION  
OFFICE OF AVIATION ANALYSIS  
COMPETITION AND POLICY ANALYSIS DIVISION

# TABLE OF CONTENTS

	DESCRIPTION	PAGE
Introduction .....		3
Total System Passenger & All-Cargo Majors .....		4
Chart 1	Operating and Net Profit (Loss) Second Quarter 2014 .....	7
Chart 2	Operating and Net Profit (Loss) 12 Months Ended Second Quarter 2014 .....	7
Chart 3	Operating Profit (Loss) By Quarter .....	8
Chart 4	Net Income (Loss) By Quarter .....	8
Chart 5	Operating Profit (Loss) By 12-Month Ending Periods .....	9
Chart 6	Net Income (Loss) By 12-Month Ending Periods .....	9
Chart 7	Operating Revenue Per Revenue Ton-Mile Percent Change From Same Period A Year Earlier .....	10
Chart 8	Ton Load Factor Percentage Point Change From Year Earlier...	10
Chart 9	Operating Expense Per Revenue Ton-Mile, Percent Change From Same Period A Year Earlier .....	11
Chart 10	Operating Expense Per Available Ton-Mile, Percent Change From Same Period A Year Earlier .....	11
Total Passenger Majors .....		12
Chart 11	Passenger Revenues Per Revenue Passenger-Mile, Percent Change From Same Period A Year Earlier .....	15
Chart 12	Revenue Passenger-Miles, Percent Change From Same Period A Year Earlier .....	15
Chart 13	Available Seat-Miles, Percent Change From Same Period A Year Earlier .....	16
Chart 14	Passenger Load Factor, Percentage Point Change From Same Period A Year Earlier .....	16
Chart 15	Passenger (RPM) Yield .....	17
Chart 16	Passenger Load Factor .....	17
Alaska Airlines, Inc. ....		18
American Airlines, Inc. ....		19
American Eagle, Inc. ....		20
Delta Air Lines, Inc. ....		21
Frontier Airlines .....		22
Hawaiian Airlines .....		23
JetBlue Airways .....		24
Skywest Airlines Co. ....		25
Southwest Airlines Co. ....		26
US Airways, Inc. ....		27
United Air Lines, Inc. ....		28
Total All-Cargo Majors .....		29
Atlas Air .....		32
Federal Express Corp. ....		33
United Parcel Service .....		34
Comparison of Individual Major Operating Profit (Loss) .....		35
Comparison of Individual Major Net Income (Loss) .....		36
Comparison of Individual Major Scheduled Passenger Load Factor .....		37
Comparison of Individual Major Scheduled Passenger Yield .....		38
Comparison of Individual Major Operating Profit Margin .....		39
Comparison of Individual Major Debt To Investment Ratio and Total Debt ..		40
Footnotes .....		41
Explanation of Line Items .....		42

## INTRODUCTION

This report contains staff comments, tables and charts on the financial condition of the U.S. major airlines.

The data are presented on both a carrier group and an individual carrier basis, but the primary focus is on the individual major carrier and its performance. Data are presented for the most recent quarterly period and the comparable quarter a year earlier and also on a 12-month ended basis as at the end of the five most recent quarters. In addition, data on charges over comparable periods 12-months earlier are presented. A graphic presentation of comparative trends, on a carrier group basis, is made for several unit and overall financial indicators. In the case of merged carriers, data for the carriers involved have been combined and presented under the name of the surviving carrier so that meaningful comparisons could be made.

All data presented in this financial and traffic review are derived from data reported to the U.S. Department of Transportation on Form 41 Schedules by Large Certificated Air Carriers. For comparison purposes, this analysis is limited to the major scheduled passenger and all-cargo air carriers only. Alaska Airlines, with revenues exceeding \$1 billion in calendar year 1995, became a major airline effective January 1, 1996, and is now included in this review. All financial and traffic results have been retroactively restated to include the operations of Alaska. Certain data in this review is classified in two broad categories: namely "domestic" and "international". "Domestic" encompasses operations within and between the 50 states of the United States, the District of Columbia, the Commonwealth of Puerto Rico, and the U.S. Virgin Islands. It also encompasses Canadian transborder operations and for certain carriers Mexican transborder operations. All other operations are considered "international", which is separated into Atlantic, Latin, and Pacific.

Suggestions from users for the improving either the scope, presentation, or utility of this review are invited. It will also be appreciated if suggestions, discrepancies, and errors in the data are called to the attention of the Economic & Financial Division, Office of Aviation Analysis, Office of the Secretary, U.S. Department of Transportation, Washington, D.C. 20590.

**QUARTERLY FINANCIAL & TRAFFIC REVIEW**  
**SYSTEM OPERATIONS**  
**System All Majors**

ITEMS		QUARTER ENDED		12 MONTHS ENDED				
		2014/06	2013/06	2014/06	2014/03	2013/12	2013/09	2013/06
<u>FINANCIAL RESULTS: (\$Millions)</u>								
1	Operating Revenues	50,526.9	47,312.0	189,316.8	186,102.0	185,022.5	182,697.6	180,412.0
2	Operating Expenses	44,726.7	43,623.5	174,191.3	173,088.1	173,175.5	172,557.3	172,355.1
3	Operating Profit (Loss)	5,800.3	3,688.6	15,125.5	13,013.8	11,847.0	10,140.3	8,057.0
4	Net Income (Loss)	3,719.4	2,121.8	14,768.7	13,171.1	12,338.5	4,987.5	3,403.6
<u>TRAFFIC: (Bllions)</u>								
5	RPMs - Scheduled Rev. Svc.	203.0	197.5	766.2	760.6	758.4	753.2	749.3
6	ASMs - Scheduled Rev. Svc.	238.4	233.3	915.8	910.7	908.6	901.8	896.7
7	Overall RTMs (All Svc.)	27.8	27.2	106.3	105.7	105.5	104.9	104.5
8	Overall ATMs (All Svc.)	43.8	43.1	169.5	168.8	168.7	167.9	167.5
<u>YIELD &amp; UNIT COST &amp; PROFITS: (Cents)</u>								
9	Operating Revenue per RTM	181.9	174.1	178.1	176.1	175.4	174.2	172.6
10	Operating Expense per RTM	161.0	160.5	163.9	163.8	164.2	164.6	164.9
11	Operating Profit (Loss) per RTM	20.9	13.6	14.2	12.3	11.2	9.7	7.7
12	Operating Expense per ATM	102.1	101.3	102.8	102.6	102.7	102.8	102.9
13	Passenger Revenue per RPM	15.37	14.58	15.01	14.81	14.74	14.58	14.41
<u>FINANCIAL RATIOS:</u>								
14	Operating Revenues to Total Investment	*	*	2.18	2.32	2.46	2.57	2.60
15	Times Interest Earned	*	*	4.28	3.28	2.86	2.94	2.29
16	Current Assets to Current Liabilities	*	*	0.81	0.80	0.75	0.80	0.75
17	No. of Days Cash Coverage of Cash Exp.	*	*	62.5	59.0	57.2	63.3	62.2
<u>FINANCIAL PERCENTAGES:</u>								
18	Operating Profit (Loss) to Operating Revenue	11.5	7.8	8.0	7.0	6.4	5.6	4.5
19	Net Income to Stockholders Equity	*	*	40.81	43.76	48.89	22.88	16.39
20	Corporate Return on Investment	*	*	20.4	20.1	20.4	11.2	9.2
21	Debt to Total Investment	*	*	49.8	53.5	55.2	67.7	70.0
<u>LOAD FACTOR: (%)</u>								
22	Passenger Load Factor (Sch. Svc.)	85.2	84.6	83.7	83.5	83.5	83.5	83.6
23	Ton Load Factor (All Svc.)	63.4	63.1	62.7	62.6	62.5	62.5	62.4
<u>Employment &amp; Productivity:</u>								
24	Employment, Total Weighted Avg CY	490,398	488,526	488,037	487,568	487,394	487,221	487,537
25	Overall RTM's per Employee (000)	56.2	54.8	215.5	214.1	213.5	212.1	211.2

		CHANGE OVER COMPARABLE PERIOD 12 MONTHS EARLIER						
26	Operating Revenues (%)	6.8	0.6	4.9	3.3	3.1	2.1	0.6
27	Operating Expenses (%)	2.5	-1.5	1.1	0.0	0.5	0.5	0.4
28	Operating Profit (Loss) (in Millions \$)	2,111.7	914.3	7,068.6	5,871.2	4,692.5	2,839.9	421.5
29	Net Income (Loss) (in Millions \$)	1,597.6	1,220.8	11,365.1	10,988.3	11,349.0	4,174.6	2,639.9
30	RPMs (Sch. Svc.) (%)	2.8	1.6	2.2	1.9	2.0	1.4	0.9
31	ASMs (Sch. Svc.) (%)	2.2	1.7	2.1	2.0	1.6	0.8	0.3
32	Operating Revenues per RTM (%)	4.5	-0.7	3.2	1.8	1.6	1.0	-0.2
33	Operating Expense per RTM (%)	0.3	-2.7	-0.6	-1.4	-1.0	-0.6	-0.4
34	Passenger Revenue per RPM (Sch. Svc.)(%)	5.4	0.0	4.2	2.7	2.6	1.3	-0.2

**QUARTERLY FINANCIAL & TRAFFIC REVIEW**  
**DOMESTIC OPERATIONS**  
**Domestic All Majors**

ITEMS		QUARTER ENDED		12 MONTHS ENDED				
		2014/06	2013/06	2014/06	2014/03	2013/12	2013/09	2013/06
<u>FINANCIAL RESULTS: (\$Millions)</u>								
1	Operating Revenues	35,226.0	32,807.6	131,435.8	129,017.5	128,189.4	126,564.9	124,795.6
2	Operating Expenses	30,165.9	29,393.2	118,052.0	117,279.2	117,250.2	116,882.5	117,189.2
3	Operating Profit (Loss)	5,060.0	3,414.4	13,383.9	11,738.3	10,939.2	9,682.4	7,606.4
4	Net Income (Loss)	3,345.6	2,049.3	12,166.7	10,870.4	10,165.8	4,816.5	3,217.5
<u>TRAFFIC: (Bllions)</u>								
5	RTMs - Scheduled Svc.	135.9	132.4	513.8	510.2	509.0	506.3	505.3
6	ATMs - Scheduled Svc.	157.0	155.2	607.9	606.0	606.4	602.8	600.9
7	Overall RTMs (All Svc.)	16.5	16.1	63.1	62.7	62.5	62.3	62.1
8	Overall ATMs (All Svc.)	25.3	24.7	98.0	97.5	97.5	97.1	96.9
<u>YIELD &amp; UNIT COST &amp; PROFITS: (Cents)</u>								
9	Operating Revenue per RTM	213.4	203.7	208.5	205.9	205.0	203.3	200.9
10	Operating Expense per RTM	182.8	182.5	187.2	187.2	187.5	187.8	188.6
11	Operating Profit (Loss) per RTM	30.7	21.2	21.2	18.7	17.5	15.6	12.2
12	Operating Expense per ATM	119.4	118.8	120.5	120.3	120.3	120.4	121.0
13	Passenger Revenue per RPM	15.59	14.55	15.08	14.81	14.70	14.49	14.25
<u>FINANCIAL RATIOS:</u>								
14	Operating Revenues to Total Investment	*	*	**	**	**	**	**
15	Times Interest Earned	*	*	**	**	**	**	**
16	Current Assets to Current Liabilities	*	*	**	**	**	**	**
17	No. of Days Cash Coverage of Cash Exp.	*	*	**	**	**	**	**
<u>FINANCIAL PERCENTAGES:</u>								
18	Operating Profit (Loss) to Operating Revenue	14.4	10.4	10.2	9.1	8.5	7.7	6.1
19	Net Income to Stockholders Equity	*	*	**	**	**	**	**
20	Corporate Return on Investment	*	*	23.1	22.6	22.9	13.6	10.6
21	Debt to Total Investment	*	*	**	**	**	**	**
<u>LOAD FACTOR: (%)</u>								
22	Passenger Load Factor (Sch. Svc.)	49.8	70.0	49.8	53.5	55.2	67.7	70.0
23	Ton Load Factor (All Svc.)	86.6	85.3	84.5	84.2	83.9	84.0	84.1
<u>Employment &amp; Productivity:</u>								
24	Employment, Total Weighted Avg CY	*	*	**	**	**	**	**
25	Overall RTM's per Employee (000)	*	*	**	**	**	**	**

		CHANGE OVER COMPARABLE PERIOD 12 MONTHS EARLIER						
26	Operating Revenues (%)	7.4	0.2	5.3	3.4	3.0	2.1	0.5
27	Operating Expenses (%)	2.6	-0.6	0.7	-0.1	0.2	0.0	0.5
28	Operating Profit (Loss) (in Millions \$)	1,645.6	229.3	5,777.5	4,361.2	3,576.6	2,630.7	24.2
29	Net Income (Loss)(in Millions \$)	1,296.3	521.2	8,949.2	8,174.1	8,043.2	2,909.6	1,155.6
30	RPMs (Sch. Svc.) (%)	2.7	1.2	1.7	1.3	1.5	0.9	0.7
31	ASMs (Sch. Svc.) (%)	1.2	1.4	1.2	1.2	1.4	0.7	0.5
32	Operating Revenues per RTM (%)	4.8	-0.9	3.8	2.3	1.7	1.2	-0.4
33	Operating Expense per RTM (%)	0.1	-1.7	-0.7	-1.2	-1.1	-0.9	-0.4
34	Passenger Revenue per RPM (Sch. Svc.)(%)	7.2	0.0	5.8	3.9	3.5	1.9	-0.5

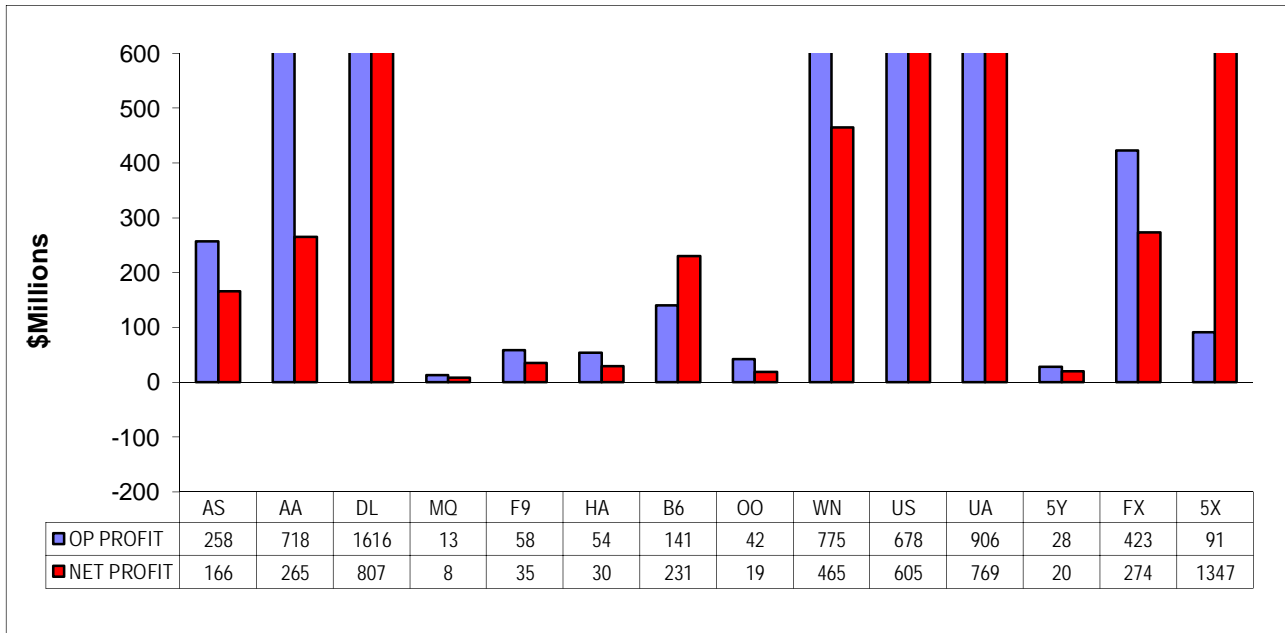
**QUARTERLY FINANCIAL & TRAFFIC REVIEW**  
**INTERNATIONAL OPERATIONS**  
**Int'l All Majors**

ITEMS		QUARTER ENDED		12 MONTHS ENDED				
		2014/06	2013/06	2014/06	2014/03	2013/12	2013/09	2013/06
<u>FINANCIAL RESULTS: (\$Millions)</u>								
1	Operating Revenues	14,982.9	14,206.6	56,630.1	55,853.8	55,600.8	54,909.0	54,382.3
2	Operating Expenses	14,264.1	13,951.4	55,018.9	54,706.2	54,817.5	54,582.7	54,075.8
3	Operating Profit (Loss)	718.8	255.2	1,611.2	1,147.6	783.3	326.3	306.5
4	Net Income (Loss)	358.7	73.2	2,544.6	2,259.2	2,126.0	124.1	129.4
<u>TRAFFIC: (Bllions)</u>								
5	RTMs - Scheduled Svc.	67.1	65.1	252.4	250.4	249.3	246.9	244.1
6	ATMs - Scheduled Svc.	81.4	78.2	307.9	304.6	302.2	298.9	295.9
7	Overall RTMs (All Svc.)	10.5	10.3	40.2	40.0	39.8	39.5	39.3
8	Overall ATMs (All Svc.)	17.2	16.9	66.1	65.8	65.6	65.3	65.2
<u>YIELD &amp; UNIT COST &amp; PROFITS: (Cents)</u>								
9	Operating Revenue per RTM	142.2	138.5	140.7	139.8	139.6	139.0	138.4
10	Operating Expense per RTM	135.3	136.0	136.7	136.9	137.7	138.2	137.6
11	Operating Profit (Loss) per RTM	6.8	2.5	4.0	2.9	2.0	0.8	0.8
12	Operating Expense per ATM	83.0	82.7	83.3	83.2	83.5	83.5	83.0
13	Passenger Revenue per RPM	14.93	14.65	14.88	14.81	14.83	14.77	14.75
<u>FINANCIAL RATIOS:</u>								
14	Operating Revenues to Total Investment	*	*	**	**	**	**	**
15	Times Interest Earned	*	*	**	**	**	**	**
16	Current Assets to Current Liabilities	*	*	**	**	**	**	**
17	No. of Days Cash Coverage of Cash Exp.	*	*	**	**	**	**	**
<u>FINANCIAL PERCENTAGES:</u>								
18	Operating Profit (Loss) to Operating Revenue	4.8	1.8	2.8	2.1	1.4	0.6	0.6
19	Net Income to Stockholders Equity	*	*	**	**	**	**	**
20	Corporate Return on Investment	*	*	14.4	14.6	15.0	5.5	5.6
21	Debt to Total Investment	*	*	**	**	**	**	**
<u>LOAD FACTOR: (%)</u>								
22	Passenger Load Factor (Sch. Svc.)	82.4	83.3	82.0	82.2	82.5	82.6	82.5
23	Ton Load Factor (All Svc.)	61.3	60.8	60.9	60.8	60.7	60.5	60.3
<u>Employment &amp; Productivity:</u>								
24	Employment, Total Weighted Avg CY	*	*	**	**	**	**	**
25	Overall RTM's per Employee (000)	*	*	**	**	**	**	**

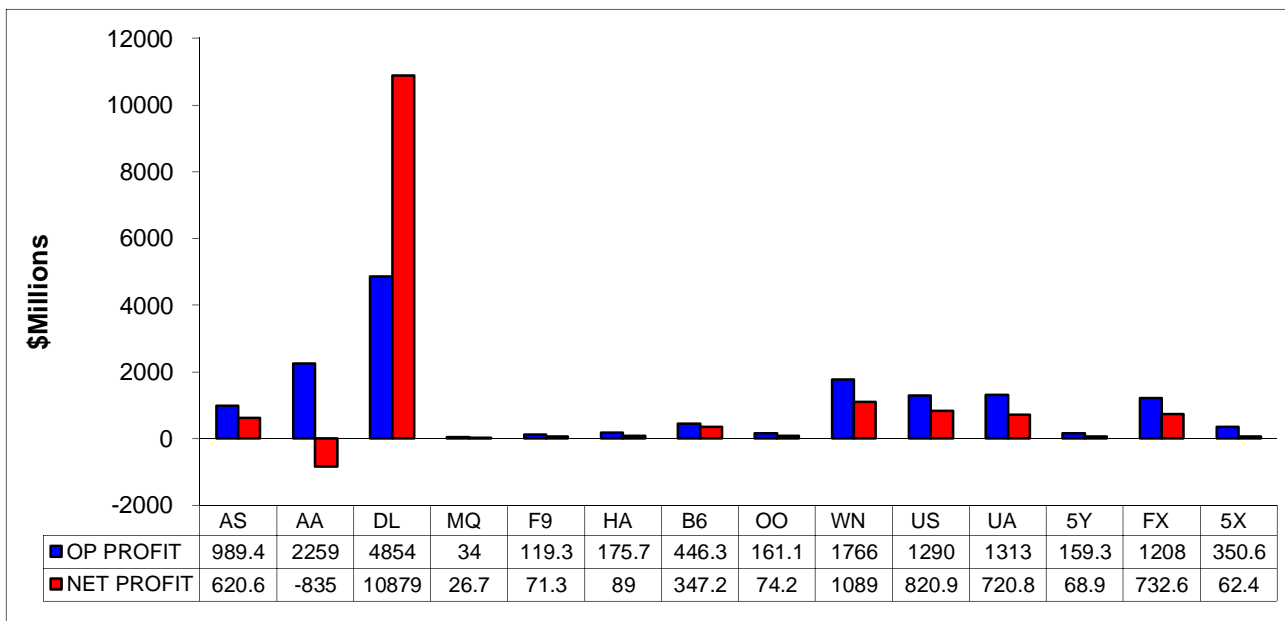
		CHANGE OVER COMPARABLE PERIOD 12 MONTHS EARLIER						
26	Operating Revenues (%)	5.5	1.8	4.1	3.2	3.4	2.0	1.0
27	Operating Expenses (%)	2.2	-3.2	1.7	0.3	1.2	1.5	0.2
28	Operating Profit (Loss) (in Millions \$)	463.6	711.1	1,304.7	1,552.3	1,168.7	233.6	399.7
29	Net Income (Loss)(in Millions \$)	285.4	723.5	2,415.2	2,853.3	3,341.0	1,296.1	1,504.8
30	RTMs (All Svc.) (%)	3.1	2.4	3.4	3.2	3.1	2.4	1.4
31	ATMs (All Svc.) (%)	4.2	2.3	4.1	3.6	2.2	1.0	-0.2
32	Operating Revenues per RTM (%)	2.7	1.0	1.7	1.3	2.0	1.4	0.9
33	Operating Expense per RTM (%)	-0.5	-4.0	-0.6	-1.5	-0.2	1.0	0.1
34	Passenger Revenue per RPM (Sch. Svc.)(%)	1.9	0.1	0.8	0.4	0.7	0.2	0.6

# COMPARISONS AMONG MAJOR GROUP AIRLINES

**Chart 1.**  
**Operating and Net Profit (Loss)**  
**For the Quarter Ended June 2014**

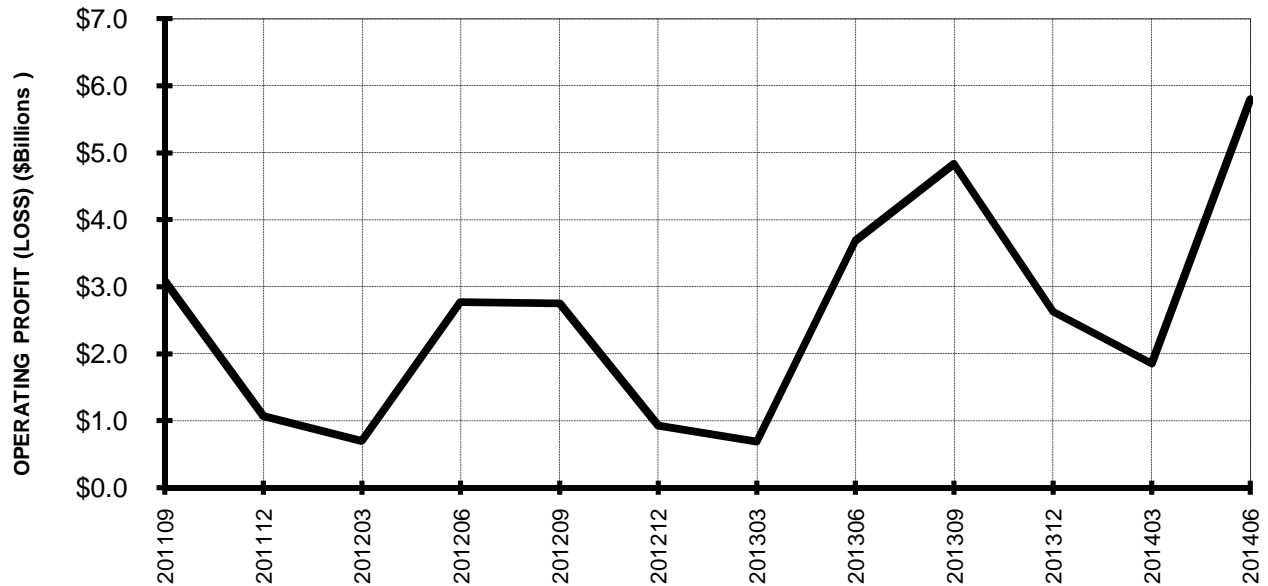


**Chart 2**  
**Operating and Net Profit (Loss)**  
**For the 12 Months Ended June 2014**

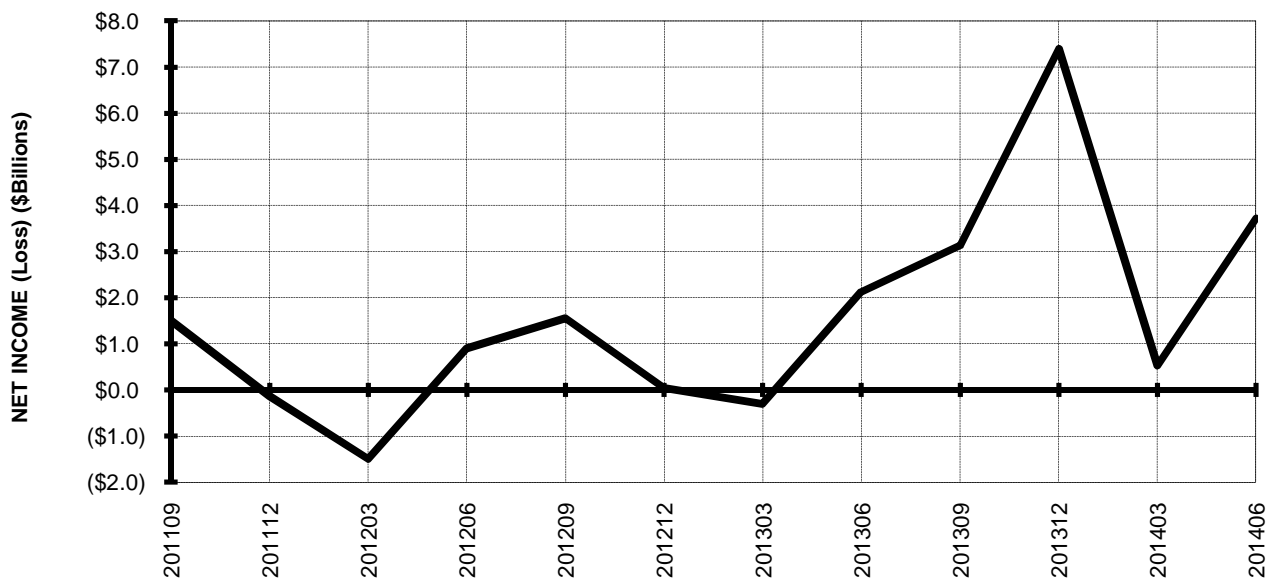


## TOTAL ALL MAJORS (SYSTEM) BY QUARTER

**Chart 3.  
OPERATING PROFIT (LOSS) (\$BILLIONS)**



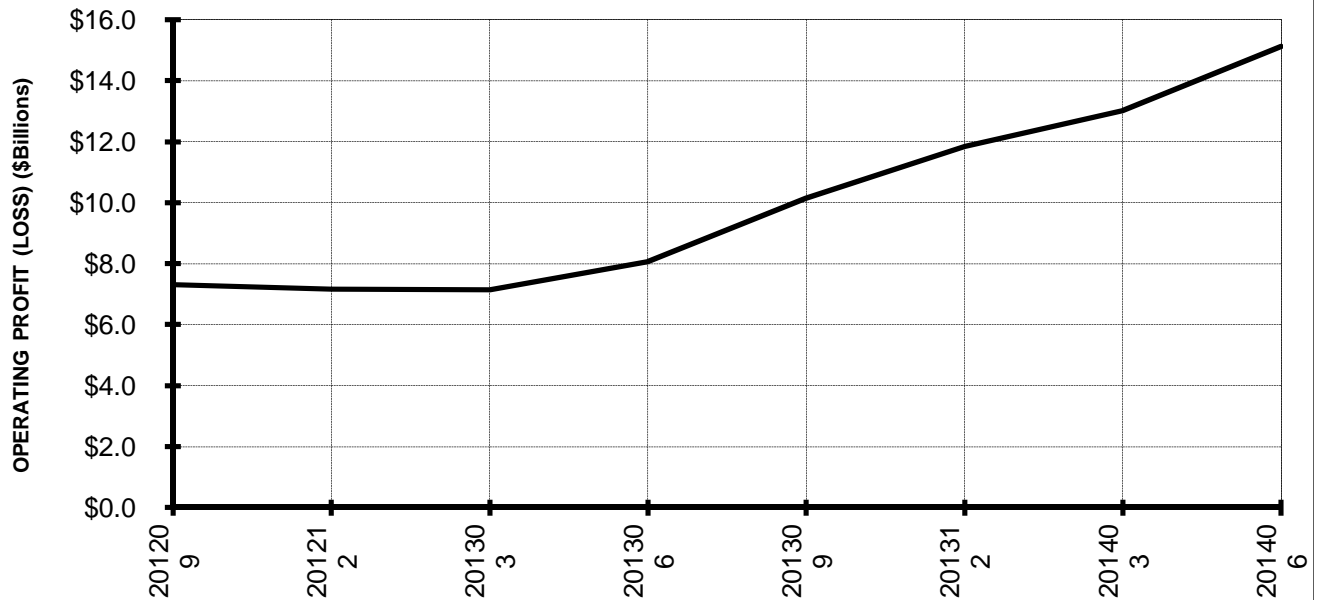
**Chart 4.  
NET INCOME (LOSS) (\$BILLIONS)**



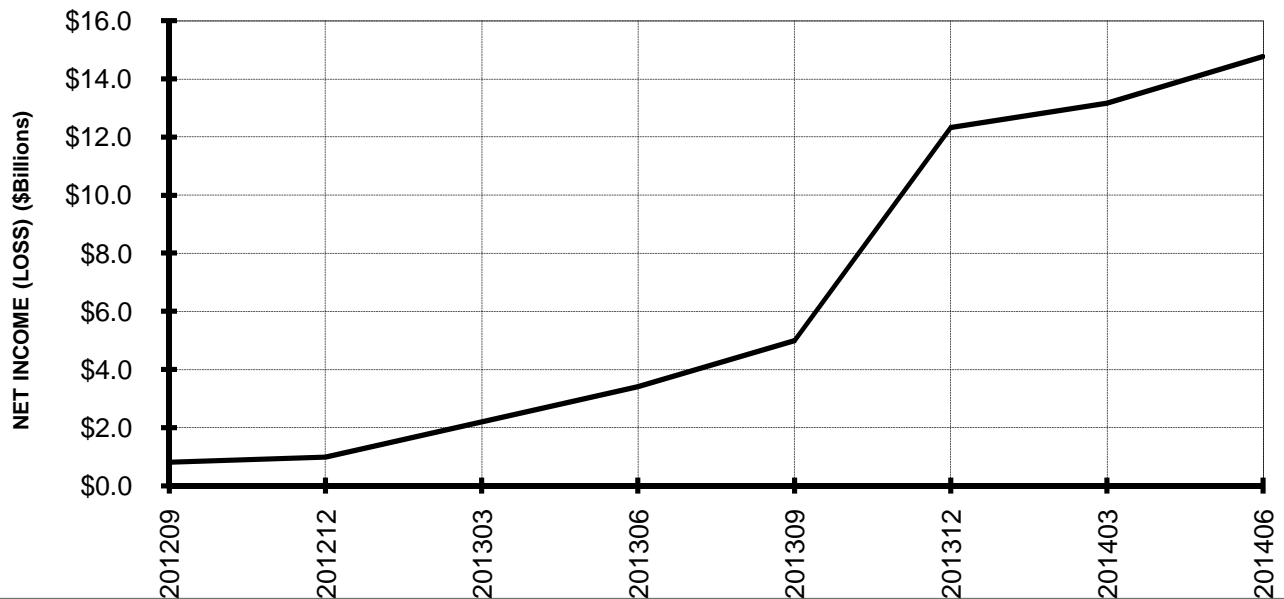


## TOTAL ALL MAJORS (SYSTEM) BY 12-MONTH ENDING PERIODS

**Chart 5.**  
**OPERATING PROFIT (LOSS) (\$BILLIONS)**

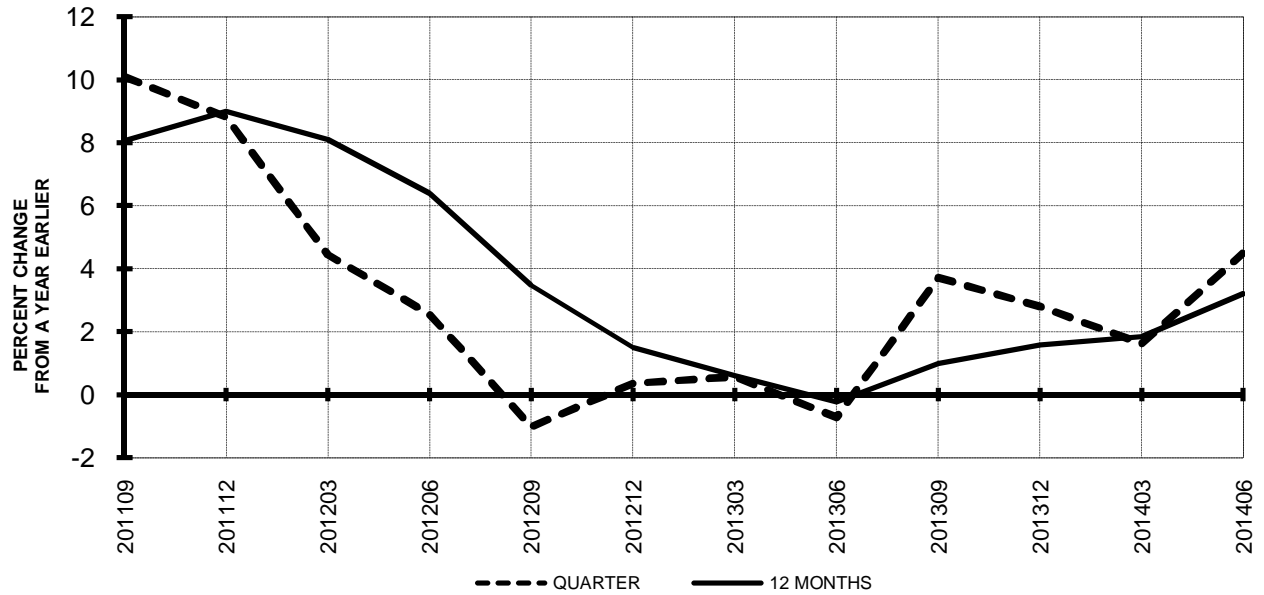


**Chart 6.**  
**NET INCOME (LOSS) (\$BILLIONS)**

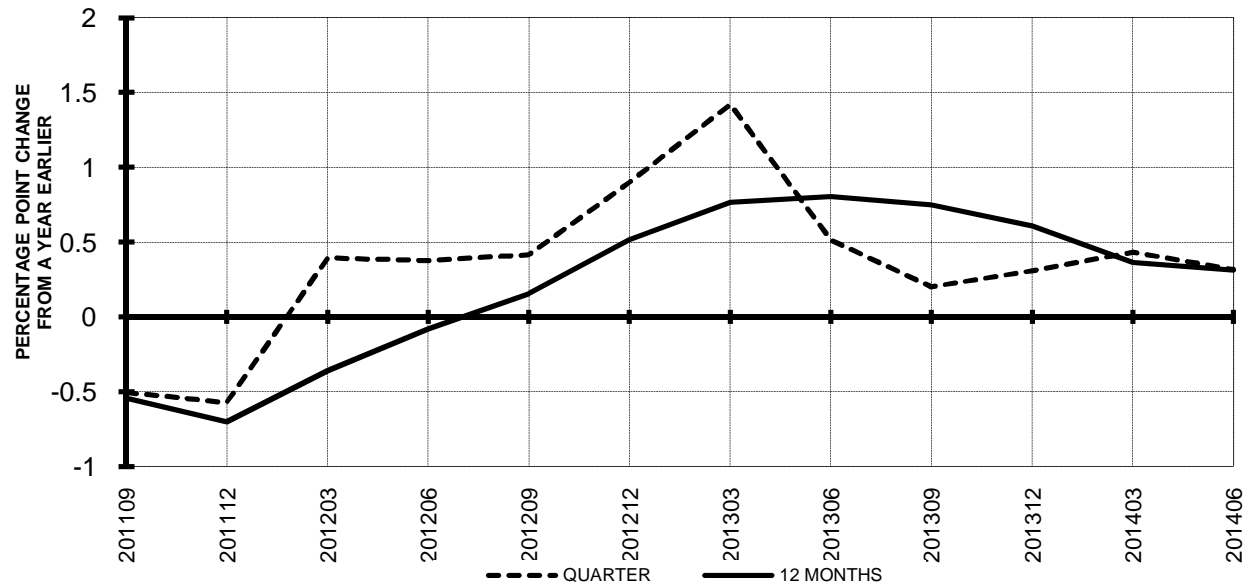


## TOTAL ALL MAJORS (SYSTEM) QUARTERLY AND 12-MONTH BASIS

**Chart 7.**  
**OPERATING REVENUE PER REVENUE TON-MILE**  
**PERCENT CHANGE FROM SAME PERIOD A YEAR EARLIER**

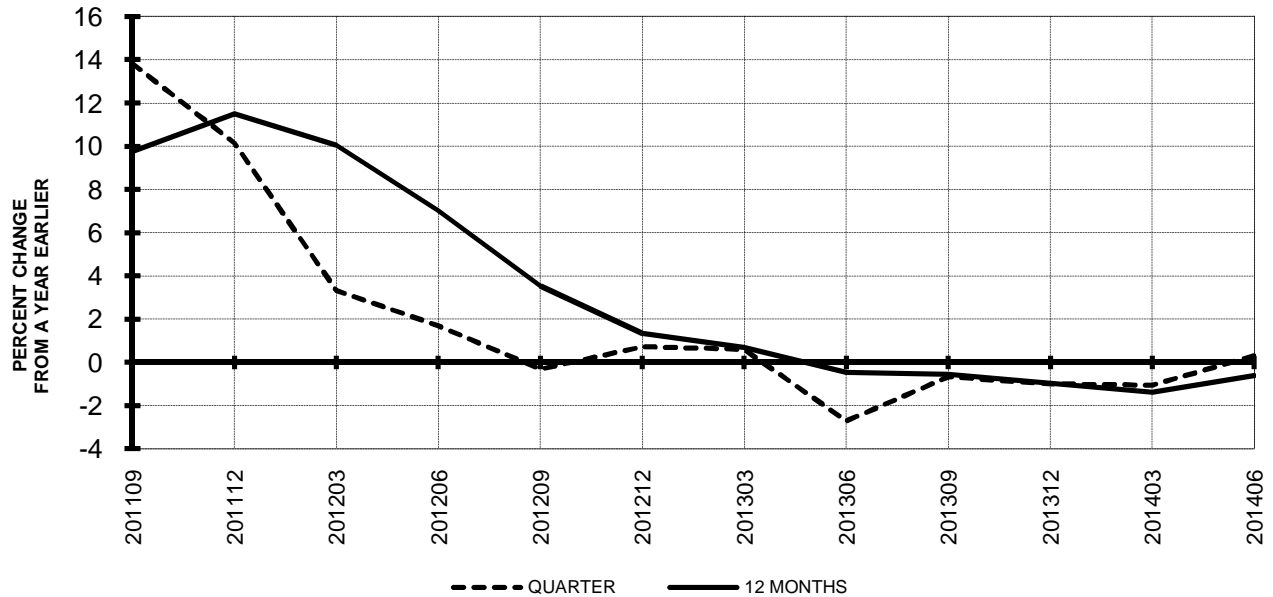


**Chart 8.**  
**TON LOAD FACTOR PERCENTAGE POINT CHANGE**  
**FROM SAME PERIOD A YEAR EARLIER**

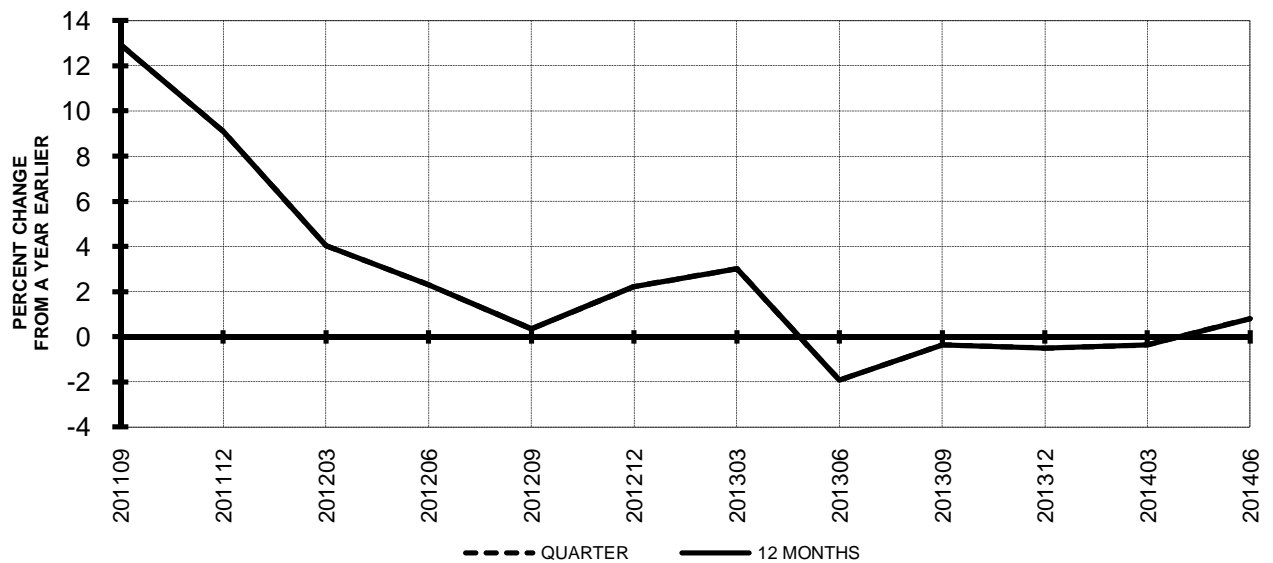


## TOTAL ALL MAJORS (SYSTEM) QUARTERLY AND 12-MONTH BASIS

**Chart 9.**  
**OPERATING EXPENSE PER REVENUE TON-MILE**  
**PERCENT CHANGE FROM SAME PERIOD A YEAR EARLIER**



**Chart 10.**  
**OPERATING EXPENSE PER AVAILABLE TON-MILE**  
**PERCENT CHANGE FROM SAME PERIOD A YEAR EARLIER**



**QUARTERLY FINANCIAL & TRAFFIC REVIEW**  
**SYSTEM OPERATIONS**  
**System Passenger Majors**

ITEMS		QUARTER ENDED		12 MONTHS ENDED				
		2014/06	2013/06	2014/06	2014/03	2013/12	2013/09	2013/06
<u>FINANCIAL RESULTS: (\$Millions)</u>								
1	Operating Revenues	41,979.4	38,947.8	155,742.9	152,711.3	151,563.9	149,216.2	146,949.1
2	Operating Expenses	36,721.5	35,448.7	142,335.0	141,062.2	141,039.5	140,383.6	140,083.0
3	Operating Profit (Loss)	5,257.8	3,499.0	13,407.9	11,649.1	10,524.4	8,832.6	6,866.1
4	Net Income (Loss)	3,400.9	2,142.8	13,904.8	12,646.6	11,775.0	4,439.5	2,933.3
<u>TRAFFIC: (Bllions)</u>								
5	RPMs - Scheduled Svc.	203.0	197.5	766.2	760.6	758.4	753.2	749.3
6	ASMs - Scheduled Svc.	238.4	233.3	915.8	910.7	908.6	901.8	896.7
7	Overall RTMs (All Svc.)	22.3	21.6	84.1	83.5	83.2	82.6	82.3
8	Overall ATMs (All Svc.)	34.4	33.5	131.5	130.6	130.4	129.7	129.2
<u>YIELD &amp; UNIT COST &amp; PROFITS: (Cents)</u>								
9	Operating Revenue per RTM	188.6	180.4	185.1	182.9	182.2	180.7	178.6
10	Operating Expense per RTM	165.0	164.2	169.2	169.0	169.6	170.0	170.3
11	Operating Profit (Loss) per RTM	23.6	16.2	15.9	14.0	12.7	10.7	8.3
12	Operating Expense per ATM	106.9	105.8	108.3	108.0	108.1	108.3	108.4
13	Passenger Revenue per RPM	15.37	14.58	15.01	14.81	14.74	14.58	14.41
<u>FINANCIAL RATIOS:</u>								
14	Operating Revenues to Total Investment	*	*	2.24	2.42	2.61	2.76	2.80
15	Times Interest Earned	*	*	3.96	3.08	2.65	2.75	2.09
16	Current Assets to Current Liabilities	*	*	0.80	0.78	0.79	0.83	0.78
17	No. of Days Cash Coverage of Cash Exp.	*	*	73.5	69.8	67.4	75.0	73.8
<u>FINANCIAL PERCENTAGES:</u>								
18	Operating Profit (Loss) to Operating Revenue	12.5	9.0	8.6	7.6	6.9	5.9	4.7
19	Net Income to Stockholders Equity	*	*	62.34	77.32	101.69	53.73	39.97
20	Corporate Return on Investment	*	*	23.9	24.4	25.1	13.5	11.0
21	Debt to Total Investment	*	*	56.9	60.9	63.9	81.4	85.6
<u>PASSENGER LOAD FACTOR: (Sch. Svc. %)</u>								
22	Actual	85.2	84.6	83.7	83.5	83.5	83.5	83.6
23	Breakeven	75.5	79.2	78.4	79.4	80.1	81.3	82.7
<u>Employment &amp; Productivity:</u>								
24	Employment, Total Weighted Avg CY	345,228	343,516	343,380	342,951	342,724	342,723	343,439
25	Overall RTM's per Employee (000)	63.8	61.7	241.8	239.6	238.5	236.6	234.9

		CHANGE OVER COMPARABLE PERIOD 12 MONTHS EARLIER						
26	Operating Revenues (%)	7.8	0.5	6.0	4.1	3.7	2.2	0.5
27	Operating Expenses (%)	3.6	-2.7	1.6	0.0	0.3	0.0	-0.3
28	Operating Profit (Loss) (in Millions \$)	1,758.8	1,185.6	6,541.9	5,968.7	5,031.9	3,220.2	1,108.3
29	Net Income (Loss)(in Millions \$)	1,258.2	1,455.4	10,971.5	11,168.7	11,554.9	4,429.2	3,228.6
30	RPMs (Sch. Svc.) (%)	2.8	1.6	2.2	1.9	2.0	1.4	0.9
31	ASMs (Sch. Svc.) (%)	2.2	1.7	2.1	2.0	1.6	0.8	0.3
32	Operating Revenues per RTM (%)	4.6	-0.7	3.6	2.2	2.1	1.2	-0.1
33	Operating Expense per RTM (%)	0.5	-3.9	-0.7	-1.8	-1.3	-0.9	-0.9
34	Passenger Revenue per RPM (Sch. Svc.)(%)	5.4	0.0	4.2	2.7	2.6	1.3	-0.2

**QUARTERLY FINANCIAL & TRAFFIC REVIEW**  
**DOMESTIC OPERATIONS**  
**Domestic Passenger Majors**

ITEMS		QUARTER ENDED		12 MONTHS ENDED				
		2014/06	2013/06	2014/06	2014/03	2013/12	2013/09	2013/06
<u>FINANCIAL RESULTS: (\$Millions)</u>								
1	Operating Revenues	29,251.6	26,978.4	108,145.0	105,871.8	104,964.9	103,304.1	101,620.0
2	Operating Expenses	25,425.8	24,634.3	99,167.8	98,376.3	98,411.8	98,091.4	98,320.8
3	Operating Profit (Loss)	3,825.8	2,344.0	8,977.3	7,495.5	6,553.1	5,212.7	3,299.2
4	Net Income (Loss)	2,538.0	1,373.5	9,381.1	8,216.6	7,385.5	1,974.0	486.6
<u>TRAFFIC: (Bllions)</u>								
5	RPMs - Scheduled Svc.	135.9	132.4	513.8	510.2	509.0	506.3	505.3
6	ASMs - Scheduled Svc.	157.0	155.2	607.9	606.0	606.4	602.8	600.9
7	Overall RTMs (All Svc.)	14.0	13.6	52.8	52.5	52.4	52.1	52.0
8	Overall ATMs (All Svc.)	20.8	20.3	80.0	79.5	79.6	79.2	79.0
<u>YIELD &amp; UNIT COST &amp; PROFITS: (Cents)</u>								
9	Operating Revenue per RTM	209.6	198.4	204.7	201.8	200.5	198.4	195.5
10	Operating Expense per RTM	182.2	181.2	187.7	187.5	188.0	188.4	189.2
11	Operating Profit (Loss) per RTM	27.4	17.2	17.0	14.3	12.5	10.0	6.3
12	Operating Expense per ATM	122.2	121.2	124.0	123.8	123.7	123.9	124.5
13	Passenger Revenue per RPM	15.59	14.55	15.08	14.81	14.70	14.49	14.25
<u>FINANCIAL RATIOS:</u>								
14	Operating Revenues to Total Investment	*	*	**	**	**	**	**
15	Times Interest Earned	*	*	**	**	**	**	**
16	Current Assets to Current Liabilities	*	*	**	**	**	**	**
17	No. of Days Cash Coverage of Cash Exp.	*	*	**	**	**	**	**
<u>FINANCIAL PERCENTAGES:</u>								
18	Operating Profit (Loss) to Operating Revenue	13.1	8.7	8.3	7.1	6.2	5.0	3.2
19	Net Income to Stockholders Equity	*	*	**	**	**	**	**
20	Corporate Return on Investment	*	*	21.8	21.4	21.3	9.6	6.1
21	Debt to Total Investment	*	*	**	**	**	**	**
<u>PASSENGER LOAD FACTOR: (Sch. Svc. %)</u>								
22	Actual	86.6	85.3	84.5	84.2	83.9	84.0	84.1
23	Breakeven	76.3	80.8	79.7	80.9	81.6	82.9	84.9
<u>Employment &amp; Productivity:</u>								
24	Employment, Total Weighted Avg CY	*	*	**	**	**	**	**
25	Overall RTM's per Employee (000)	*	*	**	**	**	**	**

		CHANGE OVER COMPARABLE PERIOD 12 MONTHS EARLIER						
26	Operating Revenues (%)	8.4	-0.1	6.4	4.2	3.6	2.0	-0.1
27	Operating Expenses (%)	3.2	-1.2	0.9	-0.3	0.1	-0.1	0.4
28	Operating Profit (Loss) (in Millions \$)	1,481.8	278.5	5,678.0	4,474.7	3,587.4	2,125.8	-491.2
29	Net Income (Loss)(in Millions \$)	1,164.5	497.5	8,894.4	8,227.5	7,986.3	2,522.7	804.6
30	RPMs (Sch. Svc.) (%)	2.7	1.2	1.7	1.3	1.5	0.9	0.7
31	ASMs (Sch. Svc.) (%)	1.2	1.4	1.2	1.2	1.4	0.7	0.5
32	Operating Revenues per RTM (%)	5.6	-1.2	4.7	2.9	2.2	1.1	-0.8
33	Operating Expense per RTM (%)	0.6	-2.3	-0.8	-1.5	-1.3	-0.9	-0.3
34	Passenger Revenue per RPM (Sch. Svc.)(%)	7.2	0.0	5.8	3.9	3.5	1.9	-0.5

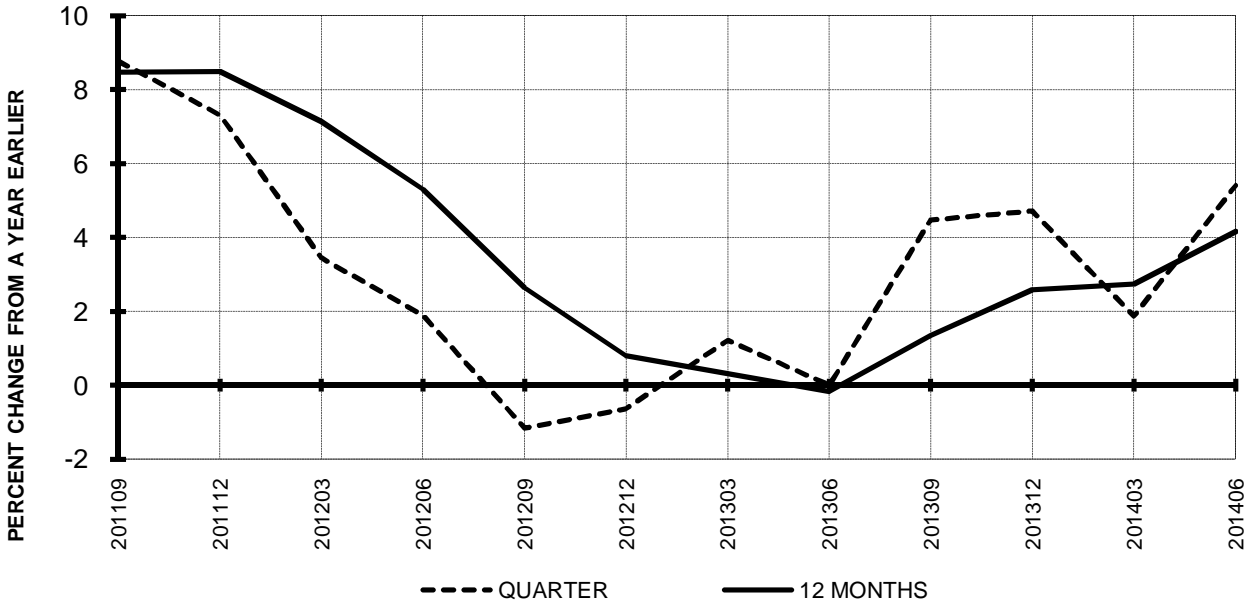
**QUARTERLY FINANCIAL & TRAFFIC REVIEW**  
**INTERNATIONAL OPERATIONS**  
**Int'l Passenger Majors**

ITEMS		QUARTER ENDED		12 MONTHS ENDED				
		2014/06	2013/06	2014/06	2014/03	2013/12	2013/09	2013/06
<u>FINANCIAL RESULTS: (\$Millions)</u>								
1	Operating Revenues	12,727.7	11,969.4	47,597.9	46,839.6	46,598.9	45,912.2	45,329.1
2	Operating Expenses	11,295.7	10,814.4	43,167.2	42,685.9	42,627.7	42,292.2	41,762.3
3	Operating Profit (Loss)	1,432.0	1,155.0	4,430.7	4,153.7	3,971.3	3,619.9	3,566.8
4	Net Income (Loss)	862.9	769.3	4,523.7	4,430.1	4,389.5	2,465.5	2,446.7
<u>TRAFFIC: (Bllions)</u>								
5	RPMs - Scheduled Svc.	67.1	65.1	252.4	250.4	249.3	246.9	244.1
6	ASMs - Scheduled Svc.	81.4	78.2	307.9	304.6	302.2	298.9	295.9
7	Overall RTMs (All Svc.)	8.3	8.0	31.3	31.0	30.8	30.5	30.3
8	Overall ATMs (All Svc.)	13.6	13.2	51.5	51.1	50.9	50.5	50.2
<u>YIELD &amp; UNIT COST &amp; PROFITS: (Cents)</u>								
9	Operating Revenue per RTM	153.3	149.6	152.0	151.1	151.1	150.4	149.6
10	Operating Expense per RTM	136.0	135.2	137.9	137.7	138.3	138.6	137.8
11	Operating Profit (Loss) per RTM	17.2	14.4	14.2	13.4	12.9	11.9	11.8
12	Operating Expense per ATM	83.4	82.1	83.8	83.5	83.8	83.8	83.2
13	Passenger Revenue per RPM	14.93	14.65	14.88	14.81	14.83	14.77	14.75
<u>FINANCIAL RATIOS:</u>								
14	Operating Revenues to Total Investment	*	*	**	**	**	**	**
15	Times Interest Earned	*	*	**	**	**	**	**
16	Current Assets to Current Liabilities	*	*	**	**	**	**	**
17	No. of Days Cash Coverage of Cash Exp.	*	*	**	**	**	**	**
<u>FINANCIAL PERCENTAGES:</u>								
18	Operating Profit (Loss) to Operating Revenue	11.3	9.6	9.3	8.9	8.5	7.9	7.9
19	Net Income to Stockholders Equity	*	*	**	**	**	**	**
20	Corporate Return on Investment	*	*	29.9	33.4	36.9	25.8	26.9
21	Debt to Total Investment	*	*	**	**	**	**	**
<u>PASSENGER LOAD FACTOR: (Sch. Svc. %)</u>								
22	Actual	82.4	83.3	82.0	82.2	82.5	82.6	82.5
23	Breakeven	73.8	76.1	75.5	76.1	76.9	77.9	78.1
<u>Employment &amp; Productivity:</u>								
24	Employment, Total Weighted Avg CY	*	*	**	**	**	**	**
25	Overall RTM's per Employee (000)	*	*	**	**	**	**	**

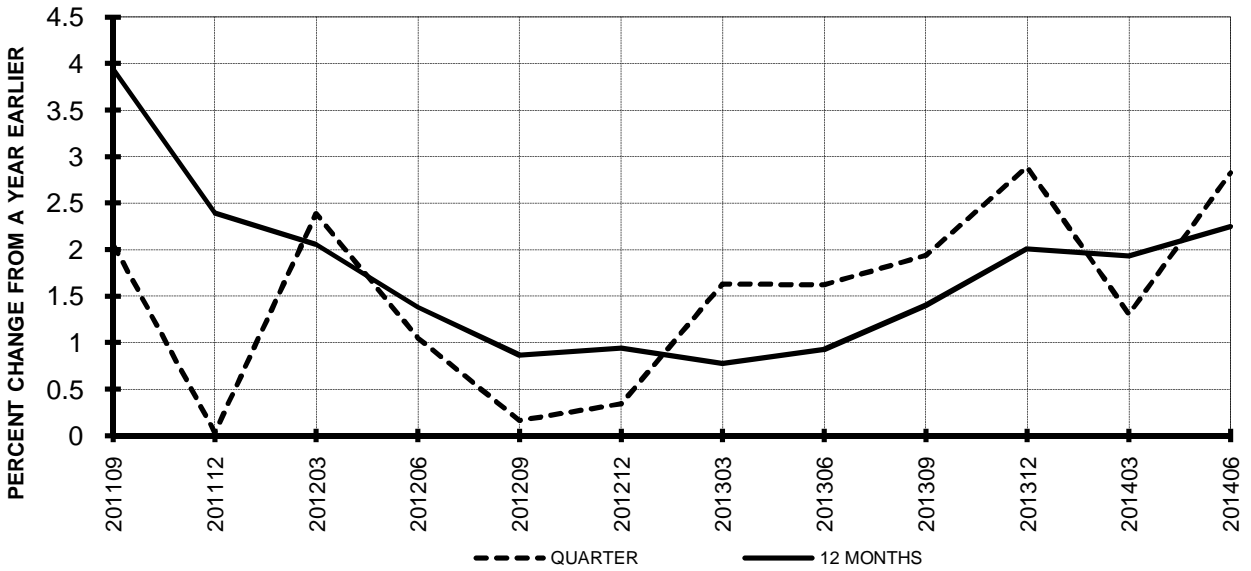
		CHANGE OVER COMPARABLE PERIOD 12 MONTHS EARLIER						
26	Operating Revenues (%)	6.3	1.8	5.0	3.8	3.9	2.6	1.8
27	Operating Expenses (%)	4.5	-6.0	3.4	0.5	0.7	0.2	-1.9
28	Operating Profit (Loss) (in Millions \$)	277.0	907.1	863.8	1,493.9	1,444.5	1,094.4	1,599.5
29	Net Income (Loss)(in Millions \$)	93.7	957.9	2,077.0	2,941.3	3,568.6	1,906.5	2,424.0
30	RPMs (Sch. Svc.) (%)	3.1	2.4	3.4	3.2	3.1	2.4	1.4
31	ASMs (Sch. Svc.) (%)	4.2	2.3	4.1	3.6	2.2	1.0	-0.2
32	Operating Revenues per RTM (%)	2.4	0.5	1.6	1.1	1.8	1.5	1.4
33	Operating Expense per RTM (%)	0.6	-7.3	0.0	-2.1	-1.3	-0.9	-2.3
34	Passenger Revenue per RPM (Sch. Svc.)(%)	1.9	0.1	0.8	0.4	0.7	0.2	0.6

# **TOTAL PASSENGER MAJORS (SYSTEM)** **QUARTERLY AND 12-MONTH BASIS (SCH. SVC.)**

**Chart 11**  
**PASSENGER REVENUES PER REVENUE PASSENGER-MILE**  
**PERCENT CHANGE FROM SAME PERIOD A YEAR EARLIER**

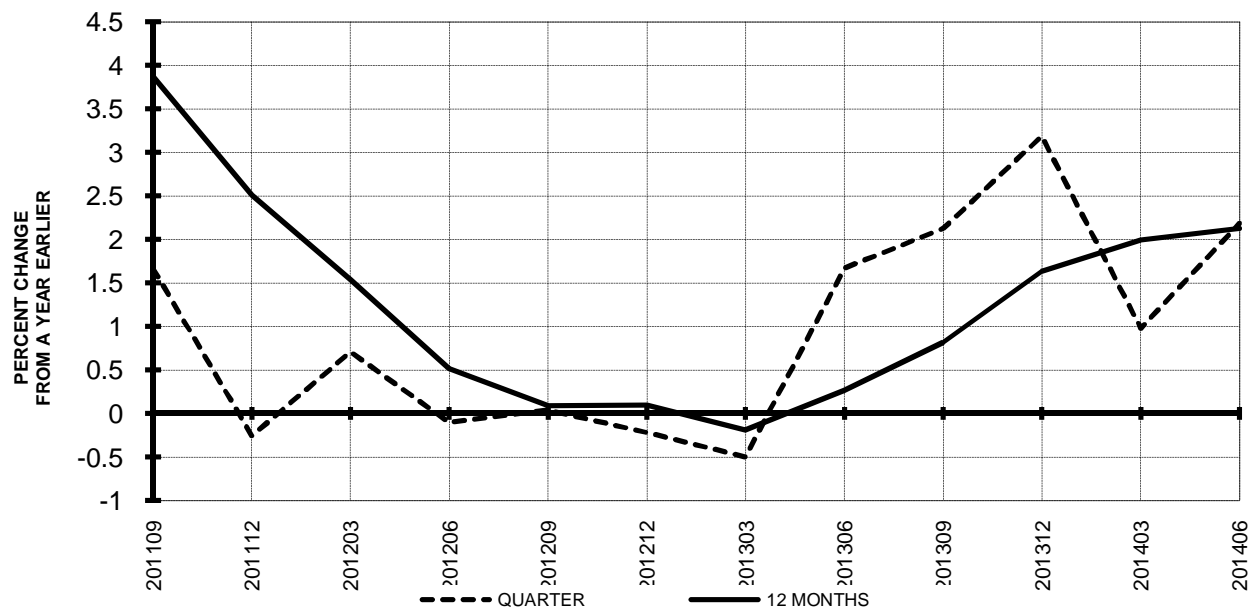


**Chart 12**  
**REVENUE PASSENGER-MILES**  
**PERCENT CHANGE FROM SAME PERIOD A EARLIER**

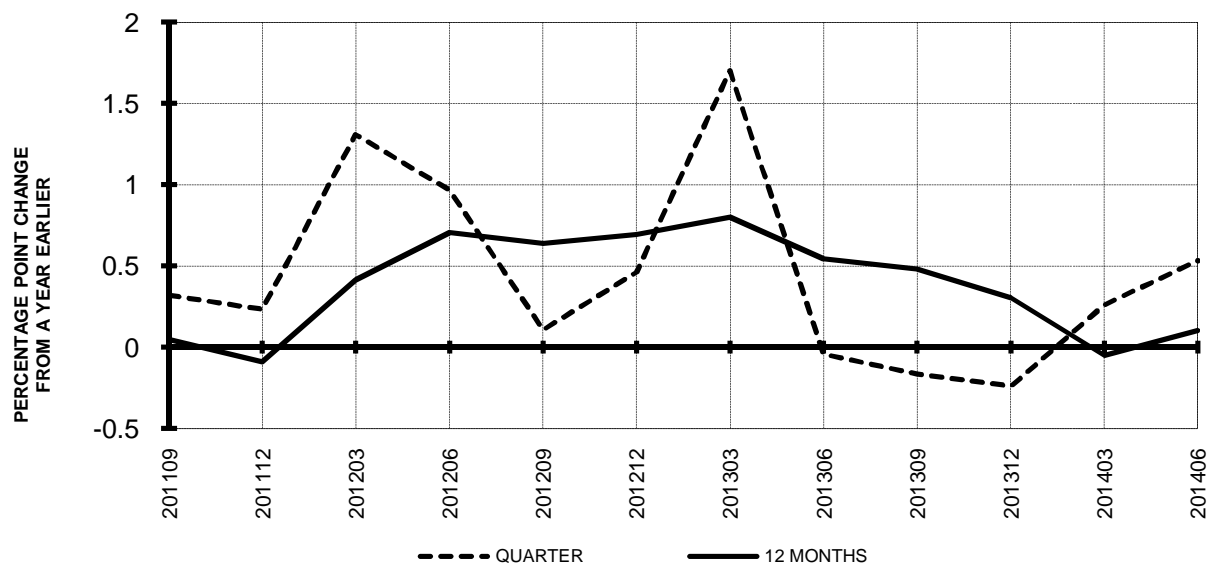


**TOTAL PASSENGER MAJORS (SYSTEM)  
QUARTERLY AND 12-MONTH BASIS (SCH. SVC.)**

**Chart 13  
AVAILABLE SEAT-MILES  
PERCENT CHANGE FROM SAME PERIOD A YEAR EARLIER**



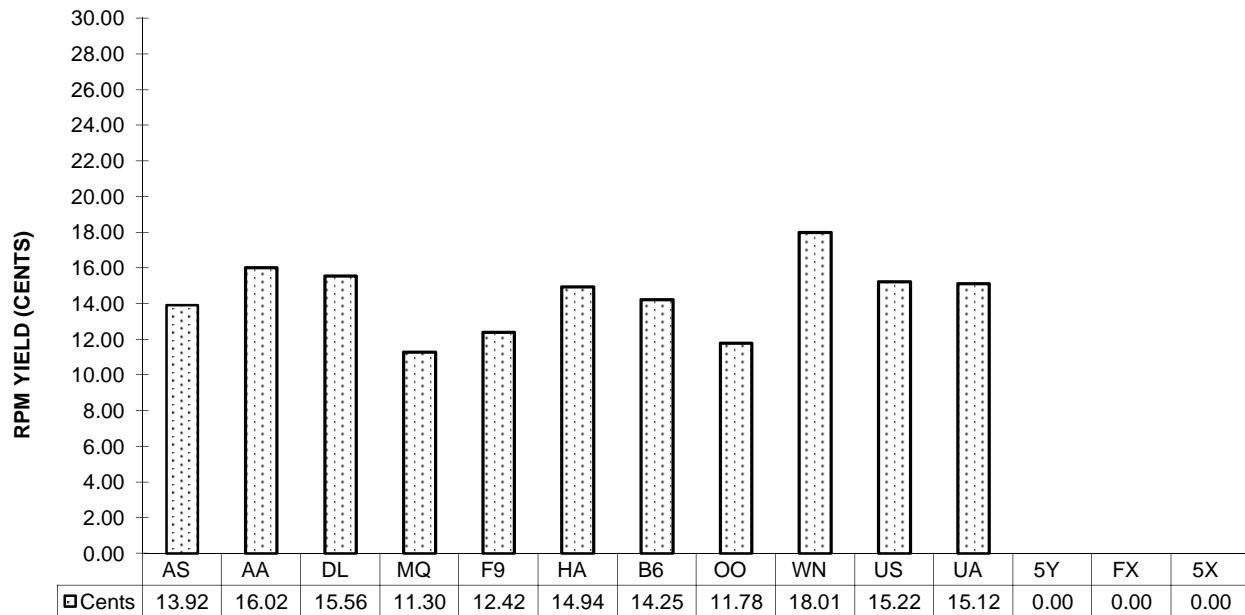
**Chart 14  
PASSENGER LOAD FACTOR PERCENTAGE  
POINT CHANGE FROM SAME PERIOD A YEAR EARLIER**



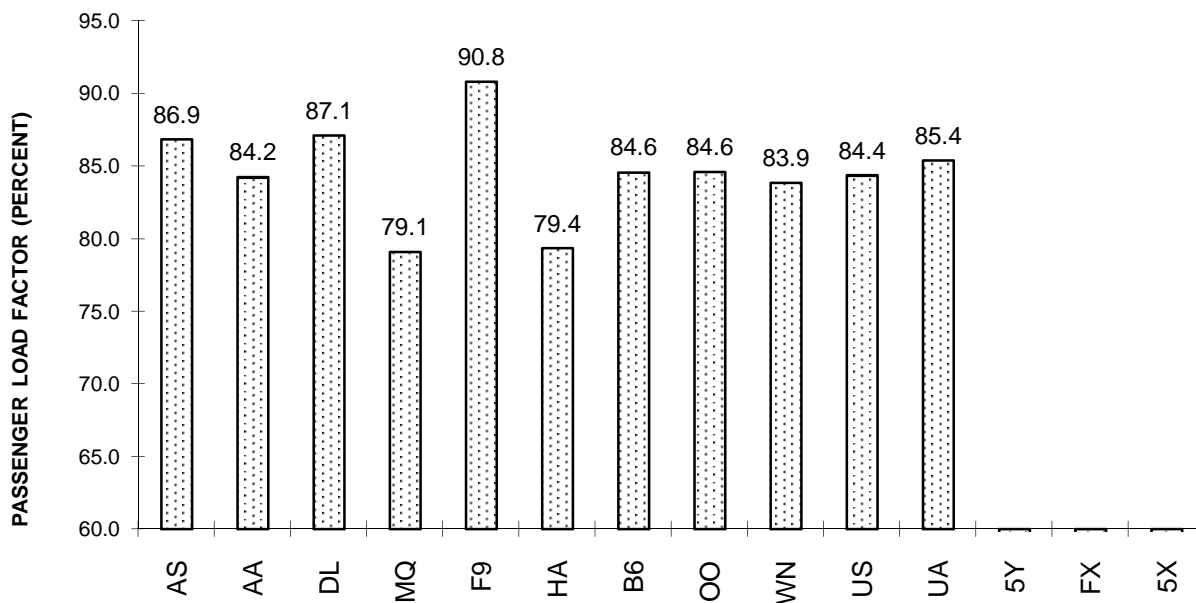


## TOTAL PASSENGER MAJORS (SYSTEM) SECOND QUARTER 2014

**Chart 15  
PASSENGER (RPM) YIELD**



**Chart 16  
PASSENGER LOAD FACTOR**



**QUARTERLY FINANCIAL & TRAFFIC REVIEW**  
**SYSTEM OPERATIONS**  
**Alaska Airlines**

ITEMS		QUARTER ENDED		12 MONTHS ENDED				
		2014/06	2013/06	2014/06	2014/03	2013/12	2013/09	2013/06
<u>FINANCIAL RESULTS: (\$Millions)</u>								
1	Operating Revenues	1,373.1	1,255.0	5,358.7	5,240.5	5,150.8	5,072.8	4,787.8
2	Operating Expenses	1,115.7	1,065.5	4,369.3	4,319.2	4,293.8	4,258.7	4,190.4
3	Operating Profit (Loss)	257.5	189.5	989.4	921.4	857.0	814.1	597.4
4	Net Income (Loss)	166.0	102.2	620.6	556.7	497.3	459.5	334.9
<u>TRAFFIC: (Bllions)</u>								
5	RPMs - Scheduled Svc.	7.0	6.7	26.7	26.4	26.1	25.9	25.4
6	ASMs - Scheduled Svc.	8.1	7.7	31.0	30.7	30.4	30.0	29.4
7	Overall RTMs (All Svc.)	0.7	0.7	2.7	2.7	2.7	2.7	2.6
8	Overall ATMs (All Svc.)	1.1	1.1	4.2	4.1	4.1	4.1	4.0
<u>YIELD &amp; UNIT COST &amp; PROFITS: (Cents)</u>								
9	Operating Revenue per RTM	189.7	181.1	195.4	193.3	191.5	190.4	183.2
10	Operating Expense per RTM	154.1	153.8	159.3	159.3	159.7	159.8	160.3
11	Operating Profit (Loss) per RTM	35.6	27.3	36.1	34.0	31.9	30.5	22.9
12	Operating Expense per ATM	104.9	101.6	105.2	104.4	104.5	104.9	105.5
13	Passenger Revenue per RPM	13.92	13.37	13.64	13.49	13.39	13.34	13.38
<u>FINANCIAL RATIOS:</u>								
14	Operating Revenues to Total Investment	*	*	1.98	2.08	2.17	2.24	2.20
15	Times Interest Earned	*	*	51.41	43.88	34.39	30.13	20.74
16	Current Assets to Current Liabilities	*	*	1.32	1.32	1.32	1.37	1.29
17	No. of Days Cash Coverage of Cash Exp.	*	*	133.1	126.6	119.3	130.7	131.4
<u>FINANCIAL PERCENTAGES:</u>								
18	Operating Profit (Loss) to Operating Revenue	18.8	15.1	18.5	17.6	16.6	16.0	12.5
19	Net Income to Stockholders Equity	*	*	29.31	29.03	28.52	28.83	22.76
20	Corporate Return on Investment	*	*	23.7	22.9	21.9	21.5	16.7
21	Debt to Total Investment	*	*	17.8	19.5	20.9	24.1	27.8
<u>PASSENGER LOAD FACTOR: (Sch. Svc. %)</u>								
22	Actual	86.9	86.9	86.0	86.0	86.1	86.4	86.5
23	Breakeven	69.9	73.7	69.1	70.1	71.1	71.6	76.7
<u>Employment &amp; Productivity:</u>								
24	Employment, Total Weighted Avg CY	9,835	9,515	9,607	9,527	9,463	9,395	9,319
25	Overall RTM's per Employee (000)	73.6	72.8	285.4	284.6	284.2	283.6	280.5

		CHANGE OVER COMPARABLE PERIOD 12 MONTHS EARLIER						
26	Operating Revenues (%)	9.4	3.6	11.9	10.5	10.8	11.2	6.7
27	Operating Expenses (%)	4.7	4.4	4.3	4.2	5.0	6.0	5.8
28	Operating Profit (Loss) (in Millions \$)	68.0	-1.5	392.0	322.5	295.6	268.6	69.1
29	Net Income (Loss)(in Millions \$)	63.8	36.2	285.7	258.0	195.7	136.4	97.2
30	RPMs (Sch. Svc.) (%)	4.5	7.9	4.9	5.8	7.1	8.3	8.4
31	ASMs (Sch. Svc.) (%)	4.5	8.5	5.5	6.5	7.9	8.6	8.3
32	Operating Revenues per RTM (%)	4.7	-4.0	6.7	4.4	3.3	2.6	-1.5
33	Operating Expense per RTM (%)	0.2	-3.2	-0.6	-1.5	-2.1	-2.2	-2.3
34	Passenger Revenue per RPM (Sch. Svc.)(%)	4.1	-3.6	1.9	-0.1	-0.8	-1.1	-0.6

**QUARTERLY FINANCIAL & TRAFFIC REVIEW**  
**SYSTEM OPERATIONS**  
**American Airlines**

ITEMS		QUARTER ENDED		12 MONTHS ENDED				
		2014/06	2013/06	2014/06	2014/03	2013/12	2013/09	2013/06
<u>FINANCIAL RESULTS: (\$Millions)</u>								
1	Operating Revenues	7,152.8	6,436.8	26,860.2	26,144.2	25,760.2	25,263.1	24,868.3
2	Operating Expenses	6,434.7	5,958.8	24,601.4	24,125.4	24,271.9	24,061.5	24,322.7
3	Operating Profit (Loss)	718.1	478.0	2,258.8	2,018.8	1,488.3	1,201.6	545.5
4	Net Income (Loss)	265.4	227.8	-834.5	-872.2	-1,525.7	535.5	-11.2
<u>TRAFFIC: (Bllions)</u>								
5	RPMs - Scheduled Svc.	33.4	32.8	129.3	128.8	128.4	127.6	126.8
6	ASMs - Scheduled Svc.	39.6	38.7	156.2	155.3	154.4	153.6	152.5
7	Overall RTMs (All Svc.)	3.8	3.8	14.9	14.8	14.7	14.5	14.4
8	Overall ATMs (All Svc.)	6.4	6.2	25.1	24.9	24.7	24.5	24.0
<u>YIELD &amp; UNIT COST &amp; PROFITS: (Cents)</u>								
9	Operating Revenue per RTM	186.6	171.4	180.8	176.9	175.5	173.8	172.3
10	Operating Expense per RTM	167.9	158.6	165.6	163.3	165.4	165.5	168.5
11	Operating Profit (Loss) per RTM	18.7	12.7	15.2	13.7	10.1	8.3	3.8
12	Operating Expense per ATM	101.1	96.0	98.1	96.8	98.2	98.4	101.2
13	Passenger Revenue per RPM	16.02	14.87	15.72	15.42	15.25	15.03	14.85
<u>FINANCIAL RATIOS:</u>								
14	Operating Revenues to Total Investment	*	*	10.80	35.51	999.90	999.90	999.90
15	Times Interest Earned	*	*	-0.25	-0.82	-1.89	0.91	-0.03
16	Current Assets to Current Liabilities	*	*	0.74	0.75	0.75	0.80	0.72
17	No. of Days Cash Coverage of Cash Exp.	*	*	99.2	104.4	104.2	120.7	109.7
<u>FINANCIAL PERCENTAGES:</u>								
18	Operating Profit (Loss) to Operating Revenue	10.0	7.4	8.4	7.7	5.8	4.8	2.2
19	Net Income to Stockholders Equity	*	*	&	&	&	&	&
20	Corporate Return on Investment	*	*	-7.6	-30.0	0.0	0.0	0.0
21	Debt to Total Investment	*	*	155.2	245.1	1,187.6	1,337.8	-2,496.3
<u>PASSENGER LOAD FACTOR: (Sch. Svc. %)</u>								
22	Actual	84.2	84.8	82.8	82.9	83.1	83.1	83.2
23	Breakeven	80.6	82.3	79.8	80.2	82.4	83.4	86.5
<u>Employment &amp; Productivity:</u>								
24	Employment, Total Weighted Avg CY	59,829	59,029	59,496	59,296	59,185	59,649	60,840
25	Overall RTM's per Employee (000)	64.1	63.6	249.7	249.2	248.0	243.7	237.3

		CHANGE OVER COMPARABLE PERIOD 12 MONTHS EARLIER						
26	Operating Revenues (%)	11.1	-0.2	8.0	5.1	3.8	1.7	0.3
27	Operating Expenses (%)	8.0	-5.8	1.1	-2.3	-2.1	-6.0	-4.9
28	Operating Profit (Loss) (in Millions \$)	240.1	356.3	1,713.3	1,829.6	1,447.2	1,951.8	1,312.8
29	Net Income (Loss)(in Millions \$)	37.7	491.5	-823.3	-369.4	400.4	3,829.5	3,179.0
30	RPMs (Sch. Svc.) (%)	1.6	0.8	2.0	1.8	1.6	0.9	-0.2
31	ASMs (Sch. Svc.) (%)	2.4	1.1	2.5	2.2	1.2	0.8	-0.6
32	Operating Revenues per RTM (%)	8.9	-1.2	5.0	2.4	1.9	0.9	0.8
33	Operating Expense per RTM (%)	5.9	-6.8	-1.7	-4.8	-3.8	-6.8	-4.4
34	Passenger Revenue per RPM (Sch. Svc.)(%)	7.7	0.2	5.8	3.9	2.9	1.5	1.3

**QUARTERLY FINANCIAL & TRAFFIC REVIEW**  
**SYSTEM OPERATIONS**  
**Delta Air Lines**

ITEMS		QUARTER ENDED		12 MONTHS ENDED				
		2014/06	2013/06	2014/06	2014/03	2013/12	2013/09	2013/06
<u>FINANCIAL RESULTS: (\$Millions)</u>								
1	Operating Revenues	10,639.9	9,716.0	39,160.5	38,236.6	37,818.2	37,382.9	36,855.8
2	Operating Expenses	9,024.2	8,767.0	34,306.8	34,049.6	33,980.5	33,946.5	33,654.9
3	Operating Profit (Loss)	1,615.7	949.0	4,853.7	4,187.0	3,837.7	3,436.4	3,201.0
4	Net Income (Loss)	807.4	688.7	10,879.3	10,760.6	10,549.2	2,046.7	1,845.0
<u>TRAFFIC: (Bllions)</u>								
5	RPMs - Scheduled Svc.	47.5	44.9	176.6	174.1	172.5	171.4	170.0
6	ASMs - Scheduled Svc.	54.5	52.4	206.6	204.5	203.2	201.5	199.7
7	Overall RTMs (All Svc.)	5.4	5.1	20.0	19.8	19.6	19.5	19.4
8	Overall ATMs (All Svc.)	8.2	7.9	30.9	30.6	30.5	30.3	30.1
<u>YIELD &amp; UNIT COST &amp; PROFITS: (Cents)</u>								
9	Operating Revenue per RTM	198.9	191.5	195.4	193.5	192.5	191.4	189.9
10	Operating Expense per RTM	168.7	172.8	171.2	172.3	173.0	173.8	173.4
11	Operating Profit (Loss) per RTM	30.2	18.7	24.2	21.2	19.5	17.6	16.5
12	Operating Expense per ATM	110.8	111.7	110.9	111.2	111.5	112.2	111.9
13	Passenger Revenue per RPM	15.56	14.73	15.25	15.03	14.96	14.81	14.60
<u>FINANCIAL RATIOS:</u>								
14	Operating Revenues to Total Investment	*	*	1.82	2.00	2.26	2.55	2.54
15	Times Interest Earned	*	*	5.65	4.64	4.06	3.28	3.00
16	Current Assets to Current Liabilities	*	*	0.71	0.67	0.70	0.65	0.62
17	No. of Days Cash Coverage of Cash Exp.	*	*	45.4	41.2	41.9	43.8	43.5
<u>FINANCIAL PERCENTAGES:</u>								
18	Operating Profit (Loss) to Operating Revenue	15.2	9.8	12.4	11.0	10.1	9.2	8.7
19	Net Income to Stockholders Equity	*	*	107.55	146.86	225.70	84.95	86.88
20	Corporate Return on Investment	*	*	54.1	60.5	67.9	20.0	19.1
21	Debt to Total Investment	*	*	40.2	42.8	43.2	77.6	85.2
<u>PASSENGER LOAD FACTOR: (Sch. Svc. %)</u>								
22	Actual	87.1	85.7	85.5	85.1	84.9	85.1	85.1
23	Breakeven	72.9	78.1	73.9	75.2	75.7	77.0	77.6
<u>Employment &amp; Productivity:</u>								
24	Employment, Total Weighted Avg CY	75,546	74,232	74,174	73,845	73,724	73,516	73,522
25	Overall RTM's per Employee (000)	70.8	68.3	270.2	267.6	266.4	265.6	263.9

		CHANGE OVER COMPARABLE PERIOD 12 MONTHS EARLIER						
26	Operating Revenues (%)	9.5	-0.8	6.3	3.5	2.6	2.1	1.0
27	Operating Expenses (%)	2.9	-7.3	1.9	-0.9	-0.6	1.0	-1.2
28	Operating Profit (Loss) (in Millions \$)	666.7	611.5	1,652.7	1,597.5	1,184.0	431.8	791.1
29	Net Income (Loss)(in Millions \$)	118.7	839.4	9,034.4	9,755.1	9,399.4	401.0	806.8
30	RPMs (Sch. Svc.) (%)	5.7	1.7	3.9	2.9	2.2	2.0	1.1
31	ASMs (Sch. Svc.) (%)	4.1	1.8	3.5	2.9	2.0	1.1	0.0
32	Operating Revenues per RTM (%)	3.9	-1.5	2.9	1.4	1.1	0.8	0.3
33	Operating Expense per RTM (%)	-2.4	-8.0	-1.3	-2.8	-2.1	-0.3	-1.9
34	Passenger Revenue per RPM (Sch. Svc.)(%)	5.6	0.8	4.4	3.2	3.3	2.7	2.0

**QUARTERLY FINANCIAL & TRAFFIC REVIEW**  
**SYSTEM OPERATIONS**  
**Envoy Air**

ITEMS		QUARTER ENDED		12 MONTHS ENDED				
		2014/06	2013/06	2014/06	2014/03	2013/12	2013/09	2013/06
<u>FINANCIAL RESULTS: (\$Millions)</u>								
1	Operating Revenues	265.5	289.5	1,090.3	1,114.3	1,139.0	1,152.0	1,142.3
2	Operating Expenses	252.5	277.4	1,056.3	1,081.2	1,095.2	1,101.6	1,080.8
3	Operating Profit (Loss)	13.0	12.1	34.0	33.1	43.8	50.3	61.5
4	Net Income (Loss)	8.1	12.5	26.7	31.1	33.2	-61.6	-59.5
<u>TRAFFIC: (Bllions)</u>								
5	RPMs - Scheduled Svc.	2.0	2.4	8.5	8.8	9.1	9.3	9.4
6	ASMs - Scheduled Svc.	2.6	3.1	11.1	11.6	12.0	12.3	12.5
7	Overall RTMs (All Svc.)	0.2	0.2	0.9	0.9	0.9	0.9	0.9
8	Overall ATMs (All Svc.)	0.3	0.4	1.4	1.4	1.5	1.5	1.5
<u>YIELD &amp; UNIT COST &amp; PROFITS: (Cents)</u>								
9	Operating Revenue per RTM	130.0	121.0	128.4	126.0	125.3	124.1	121.4
10	Operating Expense per RTM	123.7	116.0	124.4	122.3	120.5	118.6	114.9
11	Operating Profit (Loss) per RTM	6.4	5.1	4.0	3.7	4.8	5.4	6.5
12	Operating Expense per ATM	78.9	72.3	77.1	75.4	73.5	72.1	70.0
13	Passenger Revenue per RPM	11.30	10.87	11.28	11.16	11.21	11.22	11.15
<u>FINANCIAL RATIOS:</u>								
14	Operating Revenues to Total Investment	*	*	7.65	9.19	11.12	10.17	9.14
15	Times Interest Earned	*	*	999.90	999.90	999.90	999.90	999.90
16	Current Assets to Current Liabilities	*	*	3.57	3.30	2.37	2.21	2.11
17	No. of Days Cash Coverage of Cash Exp.	*	*	0.4	0.4	0.2	0.3	0.5
<u>FINANCIAL PERCENTAGES:</u>								
18	Operating Profit (Loss) to Operating Revenue	4.9	4.2	3.1	3.0	3.8	4.4	5.4
19	Net Income to Stockholders Equity	*	*	18.86	25.87	32.72	-54.65	-47.75
20	Corporate Return on Investment	*	*	17.7	24.4	30.8	-56.0	-49.3
21	Debt to Total Investment	*	*	0.4	0.5	0.9	0.6	0.6
<u>PASSENGER LOAD FACTOR: (Sch. Svc. %)</u>								
22	Actual	79.1	77.1	76.8	76.3	75.5	75.2	75.3
23	Breakeven	74.1	73.1	73.7	73.5	71.9	71.2	70.5
<u>Employment &amp; Productivity:</u>								
24	Employment, Total Weighted Avg CY	10,795	11,146	10,993	11,081	11,172	11,050	10,758
25	Overall RTM's per Employee (000)	18.9	21.5	77.2	79.8	81.4	84.0	87.4
		<b>CHANGE OVER COMPARABLE PERIOD 12 MONTHS EARLIER</b>						
26	Operating Revenues (%)	-8.3	5.6	-4.6	-1.1	2.9	-9.0	-28.4
27	Operating Expenses (%)	-9.0	11.2	-2.3	2.7	6.9	-7.0	-28.4
28	Operating Profit (Loss) (in Millions \$)	0.9	-12.7	-27.6	-41.1	-38.6	-30.8	-24.6
29	Net Income (Loss)(in Millions \$)	-4.4	-17.5	86.2	73.1	65.5	-122.1	-105.3
30	RPMs (Sch. Svc.) (%)	-14.7	-5.8	-9.8	-7.5	-5.6	-3.6	-1.6
31	ASMs (Sch. Svc.) (%)	-16.8	-4.3	-11.4	-8.3	-5.5	-3.3	-1.6
32	Operating Revenues per RTM (%)	7.4	12.1	5.7	6.8	8.9	-5.6	-27.3
33	Operating Expense per RTM (%)	6.6	18.0	8.3	11.0	13.1	-3.6	-27.2
34	Passenger Revenue per RPM (Sch. Svc.)(%)	4.0	4.6	1.1	1.3	2.7	-11.5	-31.3

**QUARTERLY FINANCIAL & TRAFFIC REVIEW**  
**SYSTEM OPERATIONS**  
**Frontier Airlines**

ITEMS		QUARTER ENDED		12 MONTHS ENDED				
		2014/06	2013/06	2014/06	2014/03	2013/12	2013/09	2013/06
<u>FINANCIAL RESULTS: (\$Millions)</u>								
1	Operating Revenues	392.9	327.7	1,431.4	1,366.1	1,348.6	1,355.6	1,359.0
2	Operating Expenses	335.1	322.0	1,312.1	1,299.0	1,326.0	1,335.3	1,346.3
3	Operating Profit (Loss)	57.9	5.7	119.3	67.1	22.5	20.4	12.7
4	Net Income (Loss)	35.1	3.0	71.3	39.1	11.6	0.4	-4.7
<u>TRAFFIC: (Bllions)</u>								
5	RPMs - Scheduled Svc.	2.6	2.3	9.5	9.2	9.2	9.2	9.4
6	ASMs - Scheduled Svc.	2.8	2.5	10.4	10.1	10.0	10.2	10.4
7	Overall RTMs (All Svc.)	0.3	0.3	1.0	1.0	1.0	1.0	1.0
8	Overall ATMs (All Svc.)	0.7	0.3	1.7	1.2	1.2	1.2	1.3
<u>YIELD &amp; UNIT COST &amp; PROFITS: (Cents)</u>								
9	Operating Revenue per RTM	141.1	130.9	139.6	137.0	136.2	135.9	133.8
10	Operating Expense per RTM	120.3	128.7	127.9	130.2	134.0	133.9	132.6
11	Operating Profit (Loss) per RTM	20.8	2.3	11.6	6.7	2.3	2.0	1.2
12	Operating Expense per ATM	46.2	104.5	79.5	105.3	108.2	107.6	106.2
13	Passenger Revenue per RPM	12.42	12.31	12.42	12.40	12.44	12.28	12.02
<u>FINANCIAL RATIOS:</u>								
14	Operating Revenues to Total Investment	*	*	5.66	5.11	4.51	4.32	4.60
15	Times Interest Earned	*	*	33.82	18.77	6.23	5.02	2.74
16	Current Assets to Current Liabilities	*	*	0.58	0.49	0.53	0.50	0.34
17	No. of Days Cash Coverage of Cash Exp.	*	*	40.4	26.3	30.4	17.8	5.8
<u>FINANCIAL PERCENTAGES:</u>								
18	Operating Profit (Loss) to Operating Revenue	14.7	1.7	8.3	4.9	1.7	1.5	0.9
19	Net Income to Stockholders Equity	*	*	55.73	28.41	7.06	0.26	-3.14
20	Corporate Return on Investment	*	*	29.5	16.0	5.1	1.4	0.0
21	Debt to Total Investment	*	*	53.0	62.9	66.7	33.8	44.8
<u>PASSENGER LOAD FACTOR: (Sch. Svc. %)</u>								
22	Actual	90.8	91.4	90.9	91.1	91.3	90.7	90.5
23	Breakeven	75.0	91.9	83.5	88.0	92.7	91.6	91.2
<u>Employment &amp; Productivity:</u>								
24	Employment, Total Weighted Avg CY	3,661	3,690	3,540	3,547	3,634	3,757	3,890
25	Overall RTM's per Employee (000)	76.1	67.8	289.7	281.2	272.4	265.4	261.0

		CHANGE OVER COMPARABLE PERIOD 12 MONTHS EARLIER						
26	Operating Revenues (%)	19.9	-11.6	5.3	-2.6	-5.9	-5.0	-11.4
27	Operating Expenses (%)	4.1	-9.4	-2.5	-5.8	-5.6	-6.1	-13.5
28	Operating Profit (Loss) (in Millions \$)	52.2	-9.8	106.6	44.7	-6.9	14.6	35.7
29	Net Income (Loss)(in Millions \$)	32.1	-5.5	75.9	38.3	6.9	-0.3	12.3
30	RPMs (Sch. Svc.) (%)	12.7	-10.4	1.1	-4.7	-8.3	-9.4	-9.8
31	ASMs (Sch. Svc.) (%)	13.5	-11.1	0.6	-5.5	-10.2	-11.1	-11.6
32	Operating Revenues per RTM (%)	7.8	-2.4	4.3	1.7	1.3	2.6	-5.4
33	Operating Expense per RTM (%)	-6.5	0.1	-3.5	-1.7	1.7	1.4	-7.6
34	Passenger Revenue per RPM (Sch. Svc.)(%)	0.8	3.2	3.3	3.9	6.3	5.9	-3.6

1/ For comparison purposes, all data has been retroactively adjusted to include Northwest.

**QUARTERLY FINANCIAL & TRAFFIC REVIEW**  
**SYSTEM OPERATIONS**  
**Hawaiian Airlines**

ITEMS		QUARTER ENDED		12 MONTHS ENDED				
		2014/06	2013/06	2014/06	2014/03	2013/12	2013/09	2013/06
<u>FINANCIAL RESULTS: (\$Millions)</u>								
1	Operating Revenues	574.8	534.0	2,230.4	2,189.6	2,155.6	2,116.6	2,066.6
2	Operating Expenses	520.7	494.4	2,054.7	2,028.4	2,018.3	2,002.2	1,951.4
3	Operating Profit (Loss)	54.1	39.6	175.7	161.2	137.2	114.4	115.2
4	Net Income (Loss)	29.8	14.5	89.0	73.7	62.4	42.5	48.8
<u>TRAFFIC: (Bllions)</u>								
5	RPMs - Scheduled Svc.	3.4	3.4	13.7	13.7	13.7	13.6	13.3
6	ASMs - Scheduled Svc.	4.3	4.2	17.0	16.9	16.8	16.6	16.2
7	Overall RTMs (All Svc.)	0.4	0.4	1.6	1.6	1.5	1.5	1.5
8	Overall ATMs (All Svc.)	0.7	0.7	2.9	2.9	2.9	2.9	2.8
<u>YIELD &amp; UNIT COST &amp; PROFITS: (Cents)</u>								
9	Operating Revenue per RTM	145.6	139.4	142.6	141.0	139.6	138.8	138.8
10	Operating Expense per RTM	131.9	129.0	131.4	130.7	130.7	131.3	131.1
11	Operating Profit (Loss) per RTM	13.7	10.3	11.2	10.4	8.9	7.5	7.7
12	Operating Expense per ATM	70.4	68.0	70.1	69.5	69.5	69.8	69.7
13	Passenger Revenue per RPM	14.94	14.11	14.62	14.41	14.22	14.05	14.01
<u>FINANCIAL RATIOS:</u>								
14	Operating Revenues to Total Investment	*	*	2.01	2.22	2.39	2.46	2.47
15	Times Interest Earned	*	*	4.84	4.66	4.52	3.44	3.78
16	Current Assets to Current Liabilities	*	*	0.88	0.81	0.79	0.71	0.70
17	No. of Days Cash Coverage of Cash Exp.	*	*	99.4	85.2	66.7	70.8	74.6
<u>FINANCIAL PERCENTAGES:</u>								
18	Operating Profit (Loss) to Operating Revenue	9.4	7.4	7.9	7.4	6.4	5.4	5.6
19	Net Income to Stockholders Equity	*	*	32.5	29.9	27.5	20.4	24.7
20	Corporate Return on Investment	*	*	11.46	10.85	10.14	8.15	9.02
21	Debt to Total Investment	*	*	76.0	75.2	70.7	75.7	79.3
<u>PASSENGER LOAD FACTOR: (Sch. Svc. %)</u>								
22	Actual	79.4	80.8	80.5	80.9	81.2	81.7	81.8
23	Breakeven	72.3	74.7	74.0	74.6	76.0	77.4	77.4
<u>Employment &amp; Productivity:</u>								
24	Employment, Total Weighted Avg CY	4,811	4,608	4,762	4,711	4,622	4,525	4,405
25	Overall RTM's per Employee (000)	82.1	83.2	328.5	329.5	334.0	337.0	338.0

		CHANGE OVER COMPARABLE PERIOD 12 MONTHS EARLIER						
26	Operating Revenues (%)	7.6	10.2	7.9	8.5	9.8	11.2	14.2
27	Operating Expenses (%)	5.3	8.9	5.3	6.1	10.3	14.6	17.0
28	Operating Profit (Loss) (in Millions \$)	14.5	9.1	60.5	55.1	4.5	-42.4	-26.9
29	Net Income (Loss)(in Millions \$)	15.2	7.4	40.2	32.4	-3.9	-48.3	-21.4
30	RPMs (Sch. Svc.) (%)	-0.8	16.6	2.8	6.9	12.0	17.7	22.4
31	ASMs (Sch. Svc.) (%)	1.0	21.3	4.3	9.1	14.7	20.7	26.2
32	Operating Revenues per RTM (%)	4.5	-8.0	2.7	-0.3	-3.9	-7.6	-8.9
33	Operating Expense per RTM (%)	2.2	-9.1	0.2	-2.5	-3.5	-4.7	-6.6
34	Passenger Revenue per RPM (Sch. Svc.)(%)	5.9	-5.8	4.4	1.5	-1.8	-5.6	-6.9

**QUARTERLY FINANCIAL & TRAFFIC REVIEW**  
**SYSTEM OPERATIONS**  
**JetBlue Airways**

ITEMS		QUARTER ENDED		12 MONTHS ENDED				
		2014/06	2013/06	2014/06	2014/03	2013/12	2013/09	2013/06
<u>FINANCIAL RESULTS: (\$Millions)</u>								
1	Operating Revenues	1,493.7	1,334.4	5,650.9	5,491.7	5,441.8	5,270.0	5,134.6
2	Operating Expenses	1,353.2	1,241.2	5,204.6	5,092.6	5,027.3	4,920.8	4,824.1
3	Operating Profit (Loss)	140.5	93.3	446.3	399.1	414.5	349.2	310.5
4	Net Income (Loss)	230.6	36.4	347.2	152.9	168.0	121.8	95.3
<u>TRAFFIC: (Bllions)</u>								
5	RPMs - Scheduled Svc.	9.6	9.1	36.5	36.0	35.8	35.3	34.8
6	ASMs - Scheduled Svc.	11.4	10.7	43.8	43.1	42.8	42.0	41.5
7	Overall RTMs (All Svc.)	1.0	0.9	3.7	3.6	3.6	3.6	3.5
8	Overall ATMs (All Svc.)	1.4	1.4	5.5	5.4	5.4	5.3	5.2
<u>YIELD &amp; UNIT COST &amp; PROFITS: (Cents)</u>								
9	Operating Revenue per RTM	153.8	145.3	153.5	151.3	150.7	148.3	146.6
10	Operating Expense per RTM	139.4	135.1	141.4	140.3	139.2	138.5	137.8
11	Operating Profit (Loss) per RTM	14.5	10.2	12.1	11.0	11.5	9.8	8.9
12	Operating Expense per ATM	94.7	92.0	94.7	94.0	93.4	93.2	92.6
13	Passenger Revenue per RPM	14.25	13.40	14.15	13.93	13.87	13.66	13.49
<u>FINANCIAL RATIOS:</u>								
14	Operating Revenues to Total Investment	*	*	1.19	1.15	1.14	1.10	1.08
15	Times Interest Earned	*	*	4.70	2.72	2.89	2.34	2.00
16	Current Assets to Current Liabilities	*	*	0.65	0.63	0.56	0.68	0.62
17	No. of Days Cash Coverage of Cash Exp.	*	*	59.4	58.7	48.3	75.1	69.5
<u>FINANCIAL PERCENTAGES:</u>								
18	Operating Profit (Loss) to Operating Revenue	9.4	7.0	7.9	7.3	7.6	6.6	6.0
19	Net Income to Stockholders Equity	*	*	16.48	7.56	8.51	6.32	5.04
20	Corporate Return on Investment	*	*	10.4	6.3	6.6	5.7	5.3
21	Debt to Total Investment	*	*	50.8	55.3	54.8	58.5	59.3
<u>PASSENGER LOAD FACTOR: (Sch. Svc. %)</u>								
22	Actual	84.6	84.9	83.4	83.5	83.7	84.0	83.9
23	Breakeven	77.8	80.7	78.3	79.1	79.0	80.2	80.7
<u>Employment &amp; Productivity:</u>								
24	Employment, Total Weighted Avg CY	13,606	12,970	13,220	13,061	12,904	12,778	12,672
25	Overall RTM's per Employee (000)	71.4	70.8	278.4	277.8	279.9	278.0	276.4

		CHANGE OVER COMPARABLE PERIOD 12 MONTHS EARLIER						
26	Operating Revenues (%)	11.9	4.5	10.1	8.2	9.2	6.8	6.4
27	Operating Expenses (%)	9.0	7.2	7.9	7.4	8.8	8.5	8.9
28	Operating Profit (Loss) (in Millions \$)	47.2	-26.7	135.9	61.9	54.8	-49.0	-83.1
29	Net Income (Loss)(in Millions \$)	194.3	-16.2	251.9	41.5	40.7	-28.3	-44.8
30	RPMs (Sch. Svc.) (%)	5.7	7.3	5.0	5.4	6.8	6.1	7.1
31	ASMs (Sch. Svc.) (%)	6.0	7.8	5.5	6.0	6.9	6.0	6.9
32	Operating Revenues per RTM (%)	5.9	-2.8	4.7	2.5	2.1	0.5	-0.7
33	Operating Expense per RTM (%)	3.1	-0.3	2.6	1.8	1.7	2.0	1.6
34	Passenger Revenue per RPM (Sch. Svc.)(%)	6.4	-2.8	4.9	2.6	2.3	0.8	-0.3



**QUARTERLY FINANCIAL & TRAFFIC REVIEW**  
**SYSTEM OPERATIONS**  
**SkyWest Airlines**

ITEMS		QUARTER ENDED		12 MONTHS ENDED				
		2014/06	2013/06	2014/06	2014/03	2013/12	2013/09	2013/06
<u>FINANCIAL RESULTS: (\$Millions)</u>								
1	Operating Revenues	475.5	463.1	1,837.7	1,825.3	1,827.6	1,831.4	1,838.5
2	Operating Expenses	433.6	411.9	1,676.6	1,655.0	1,644.1	1,644.0	1,661.2
3	Operating Profit (Loss)	42.0	51.2	161.1	170.3	183.4	187.4	177.4
4	Net Income (Loss)	19.1	24.7	74.2	79.9	87.1	88.6	80.8
<u>TRAFFIC: (Bllions)</u>								
5	RPMs - Scheduled Svc.	3.9	3.9	15.1	15.0	15.0	14.8	14.7
6	ASMs - Scheduled Svc.	4.6	4.7	18.2	18.2	18.2	18.1	17.8
7	Overall RTMs (All Svc.)	0.4	0.4	1.5	1.5	1.5	1.5	1.5
8	Overall ATMs (All Svc.)	0.6	0.6	2.4	2.4	2.4	2.4	2.4
<u>YIELD &amp; UNIT COST &amp; PROFITS: (Cents)</u>								
9	Operating Revenue per RTM	121.8	120.0	122.1	121.7	122.2	123.5	125.1
10	Operating Expense per RTM	111.0	106.7	111.4	110.3	109.9	110.8	113.0
11	Operating Profit (Loss) per RTM	10.7	13.3	10.7	11.4	12.3	12.6	12.1
12	Operating Expense per ATM	71.7	66.8	70.2	69.0	68.4	68.7	70.1
13	Passenger Revenue per RPM	11.78	11.67	11.83	11.80	11.86	12.00	12.17
<u>FINANCIAL RATIOS:</u>								
14	Operating Revenues to Total Investment	*	*	0.82	0.83	0.83	0.84	0.84
15	Times Interest Earned	*	*	3.87	4.05	4.21	4.15	3.80
16	Current Assets to Current Liabilities	*	*	1.78	1.94	1.99	2.05	2.01
17	No. of Days Cash Coverage of Cash Exp.	*	*	105.3	119.3	135.1	140.9	125.0
<u>FINANCIAL PERCENTAGES:</u>								
18	Operating Profit (Loss) to Operating Revenue	8.8	11.0	8.8	9.3	10.0	10.2	9.6
19	Net Income to Stockholders Equity	*	*	5.85	6.37	7.03	7.26	6.74
20	Corporate Return on Investment	*	*	5.2	5.6	6.0	6.1	5.8
21	Debt to Total Investment	*	*	45.3	42.2	42.0	43.0	43.3
<u>PASSENGER LOAD FACTOR: (Sch. Svc. %)</u>								
22	Actual	84.6	82.9	82.9	82.4	82.2	82.2	82.5
23	Breakeven	85.0	79.3	82.5	81.0	80.1	79.6	80.0
<u>Employment &amp; Productivity:</u>								
24	Employment, Total Weighted Avg CY	9,734	9,420	9,657	9,578	9,465	9,380	9,358
25	Overall RTM's per Employee (000)	40.1	41.0	155.8	156.6	158.0	158.1	157.1

		CHANGE OVER COMPARABLE PERIOD 12 MONTHS EARLIER						
26	Operating Revenues (%)	2.7	-9.0	0.0	-3.1	-5.3	-6.8	-8.7
27	Operating Expenses (%)	5.3	-11.9	0.9	-3.6	-7.4	-10.4	-12.5
28	Operating Profit (Loss) (in Millions \$)	-9.2	9.5	-16.3	2.4	28.2	56.2	61.0
29	Net Income (Loss)(in Millions \$)	-5.6	6.5	-6.6	5.6	20.8	37.1	39.0
30	RPMs (Sch. Svc.) (%)	1.2	7.4	2.4	3.9	5.4	6.0	5.9
31	ASMs (Sch. Svc.) (%)	-0.8	8.1	1.9	4.2	5.1	5.2	4.0
32	Operating Revenues per RTM (%)	1.5	-15.3	-2.3	-6.8	-10.1	-12.1	-13.8
33	Operating Expense per RTM (%)	4.0	-17.9	-1.4	-7.2	-12.1	-15.5	-17.3
34	Passenger Revenue per RPM (Sch. Svc.)(%)	0.9	-16.0	-2.8	-7.3	-10.8	-12.8	-14.4

**QUARTERLY FINANCIAL & TRAFFIC REVIEW**  
**SYSTEM OPERATIONS**  
**Southwest Airlines**

ITEMS		QUARTER ENDED		12 MONTHS ENDED				
		2014/06	2013/06	2014/06	2014/03	2013/12	2013/09	2013/06
<u>FINANCIAL RESULTS: (\$Millions)</u>								
1	Operating Revenues	5,011.4	4,642.5	18,150.4	17,781.5	17,699.4	17,444.0	17,207.8
2	Operating Expenses	4,236.1	4,209.8	16,384.3	16,358.0	16,421.2	16,460.0	16,562.8
3	Operating Profit (Loss)	775.4	432.7	1,766.1	1,423.5	1,278.3	984.0	645.0
4	Net Income (Loss)	465.0	224.0	1,089.4	848.4	754.5	620.3	376.9
<u>TRAFFIC: (Bllions)</u>								
5	RPMs - Scheduled Svc.	26.4	23.9	94.4	91.9	90.2	88.5	87.7
6	ASMs - Scheduled Svc.	31.5	29.3	116.2	114.0	112.6	110.8	109.4
7	Overall RTMs (All Svc.)	2.7	2.4	9.6	9.3	9.2	9.0	8.9
8	Overall ATMs (All Svc.)	3.8	3.6	14.0	13.8	13.6	13.4	13.4
<u>YIELD &amp; UNIT COST &amp; PROFITS: (Cents)</u>								
9	Operating Revenue per RTM	187.4	191.5	189.7	190.8	193.5	194.2	193.3
10	Operating Expense per RTM	158.4	173.7	171.2	175.6	179.5	183.2	186.0
11	Operating Profit (Loss) per RTM	29.0	17.9	18.5	15.3	14.0	11.0	7.2
12	Operating Expense per ATM	111.7	118.6	117.0	118.9	120.7	122.4	124.0
13	Passenger Revenue per RPM	18.01	18.31	18.21	18.29	18.54	18.42	18.11
<u>FINANCIAL RATIOS:</u>								
14	Operating Revenues to Total Investment	*	*	1.81	1.79	1.78	1.75	1.72
15	Times Interest Earned	*	*	16.60	13.56	12.35	10.12	6.66
16	Current Assets to Current Liabilities	*	*	0.73	0.72	0.76	0.82	0.79
17	No. of Days Cash Coverage of Cash Exp.	*	*	94.1	82.5	74.0	77.9	78.9
<u>FINANCIAL PERCENTAGES:</u>								
18	Operating Profit (Loss) to Operating Revenue	15.5	9.3	9.7	8.0	7.2	5.6	3.7
19	Net Income to Stockholders Equity	*	*	15.20	12.02	10.75	8.93	5.45
20	Corporate Return on Investment	*	*	12.0	9.6	8.6	7.3	4.8
21	Debt to Total Investment	*	*	26.8	28.1	27.8	29.1	30.2
<u>PASSENGER LOAD FACTOR: (Sch. Svc. %)</u>								
22	Actual	83.9	81.5	81.2	80.6	80.1	79.9	80.2
23	Breakeven	68.6	72.6	71.9	73.0	73.3	74.6	76.7
<u>Employment &amp; Productivity:</u>								
24	Employment, Total Weighted Avg CY	45,356	45,435	45,116	45,136	45,324	45,575	45,781
25	Overall RTM's per Employee (000)	59.0	53.3	212.1	206.4	201.8	197.1	194.5
		<b>CHANGE OVER COMPARABLE PERIOD 12 MONTHS EARLIER</b>						
26	Operating Revenues (%)	7.9	0.6	5.5	3.5	3.6	2.5	1.1
27	Operating Expenses (%)	0.6	1.3	-1.1	-0.9	-0.3	0.7	2.4
28	Operating Profit (Loss) (in Millions \$)	342.6	-26.9	1,121.1	751.5	655.0	305.2	-207.7
29	Net Income (Loss)(in Millions \$)	241.0	-4.3	712.4	467.1	333.4	125.4	38.0
30	RPMs (Sch. Svc.) (%)	10.4	6.8	7.6	6.6	0.5	-5.7	-11.0
31	ASMs (Sch. Svc.) (%)	7.3	7.0	6.2	6.1	0.5	-5.3	-10.8
32	Operating Revenues per RTM (%)	-2.2	-5.7	-1.8	-2.8	3.1	8.6	13.3
33	Operating Expense per RTM (%)	-8.8	-5.0	-7.9	-6.9	-0.7	6.7	14.8
34	Passenger Revenue per RPM (Sch. Svc.)(%)	-1.7	-1.9	0.6	0.5	7.7	12.2	15.3

**QUARTERLY FINANCIAL & TRAFFIC REVIEW**  
**SYSTEM OPERATIONS**  
**US Airways**

ITEMS		QUARTER ENDED		12 MONTHS ENDED				
		2014/06	2013/06	2014/06	2014/03	2013/12	2013/09	2013/06
<u>FINANCIAL RESULTS: (\$Millions)</u>								
1	Operating Revenues	4,271.4	3,945.7	15,387.0	15,061.3	14,935.6	14,668.4	14,346.7
2	Operating Expenses	3,593.7	3,468.8	14,096.7	13,971.8	13,933.0	13,559.6	13,397.2
3	Operating Profit (Loss)	677.7	476.9	1,290.3	1,089.5	1,002.5	1,108.8	949.5
4	Net Income (Loss)	605.2	325.0	820.9	540.7	483.4	660.2	703.9
<u>TRAFFIC: (Bllions)</u>								
5	RPMs - Scheduled Svc.	18.0	17.4	66.6	65.9	66.1	65.5	64.5
6	ASMs - Scheduled Svc.	21.4	20.2	79.1	77.9	77.9	76.7	75.7
7	Overall RTMs (All Svc.)	1.9	1.8	7.1	7.0	7.0	6.9	6.8
8	Overall ATMs (All Svc.)	3.2	3.0	11.8	11.5	11.5	11.3	11.1
<u>YIELD &amp; UNIT COST &amp; PROFITS: (Cents)</u>								
9	Operating Revenue per RTM	224.3	216.1	218.4	216.1	213.7	212.2	210.8
10	Operating Expense per RTM	188.7	189.9	200.0	200.5	199.4	196.1	196.8
11	Operating Profit (Loss) per RTM	35.6	26.1	18.3	15.6	14.3	16.0	13.9
12	Operating Expense per ATM	111.2	116.8	119.5	121.1	121.3	120.1	120.4
13	Passenger Revenue per RPM	15.22	14.54	14.74	14.56	14.38	14.21	13.99
<u>FINANCIAL RATIOS:</u>								
14	Operating Revenues to Total Investment	*	*	1.59	1.80	2.09	2.47	2.70
15	Times Interest Earned	*	*	4.52	3.84	3.69	4.30	4.11
16	Current Assets to Current Liabilities	*	*	1.19	1.17	1.16	1.55	1.38
17	No. of Days Cash Coverage of Cash Exp.	*	*	96.8	98.7	87.0	96.6	100.4
<u>FINANCIAL PERCENTAGES:</u>								
18	Operating Profit (Loss) to Operating Revenue	15.9	12.1	8.4	7.2	6.7	7.6	6.6
19	Net Income to Stockholders Equity	*	*	19.51	16.17	18.65	35.45	41.91
20	Corporate Return on Investment	*	*	11.5	9.9	10.6	15.5	18.0
21	Debt to Total Investment	*	*	48.3	51.0	51.0	70.3	71.4
<u>PASSENGER LOAD FACTOR: (Sch. Svc. %)</u>								
22	Actual	84.4	86.1	84.2	84.6	84.9	85.4	85.2
23	Breakeven	68.4	76.4	78.1	80.5	81.9	80.8	81.9
<u>Employment &amp; Productivity:</u>								
24	Employment, Total Weighted Avg CY	31,758	30,960	31,506	31,307	31,031	30,758	30,551
25	Overall RTM's per Employee (000)	60.0	59.0	223.7	222.6	225.2	224.8	222.8

		CHANGE OVER COMPARABLE PERIOD 12 MONTHS EARLIER						
26	Operating Revenues (%)	8.3	2.9	7.3	5.8	5.8	4.8	3.2
27	Operating Expenses (%)	3.6	0.8	5.2	4.5	4.8	2.9	1.8
28	Operating Profit (Loss) (in Millions \$)	200.8	81.8	340.8	221.8	180.6	288.2	213.3
29	Net Income (Loss)(in Millions \$)	280.2	3.5	116.9	-159.8	-219.1	-40.0	167.2
30	RPMs (Sch. Svc.) (%)	3.7	5.9	3.2	3.8	6.0	5.6	4.7
31	ASMs (Sch. Svc.) (%)	5.8	4.2	4.4	4.0	5.0	3.6	3.0
32	Operating Revenues per RTM (%)	3.8	-2.9	3.6	1.8	-0.3	-0.8	-1.2
33	Operating Expense per RTM (%)	-0.7	-4.8	1.6	0.6	-1.3	-2.6	-2.6
34	Passenger Revenue per RPM (Sch. Svc.)(%)	4.7	-1.3	5.4	3.8	1.5	0.1	-1.5

**QUARTERLY FINANCIAL & TRAFFIC REVIEW**  
**SYSTEM OPERATIONS**  
**United Air Lines**

ITEMS		QUARTER ENDED		12 MONTHS ENDED				
		2014/06	2013/06	2014/06	2014/03	2013/12	2013/09	2013/06
<u>FINANCIAL RESULTS: (\$Millions)</u>								
1	Operating Revenues	10,328.3	10,003.0	38,585.5	38,260.3	38,287.1	37,659.5	37,341.8
2	Operating Expenses	9,422.2	9,231.9	37,272.3	37,082.0	37,028.1	37,093.4	37,091.3
3	Operating Profit (Loss)	906.1	771.1	1,313.3	1,178.3	1,259.1	566.0	250.5
4	Net Income (Loss)	769.2	484.0	720.8	435.6	654.1	-74.5	-477.0
<u>TRAFFIC: (Bllions)</u>								
5	RPMs - Scheduled Svc.	47.0	46.6	178.4	178.0	178.2	177.3	177.4
6	ASMs - Scheduled Svc.	55.1	54.9	212.6	212.4	212.5	211.2	211.8
7	Overall RTMs (All Svc.)	5.3	5.2	20.2	20.1	20.1	20.0	20.1
8	Overall ATMs (All Svc.)	7.6	7.9	30.1	30.4	30.6	30.7	31.2
<u>YIELD &amp; UNIT COST &amp; PROFITS: (Cents)</u>								
9	Operating Revenue per RTM	194.4	190.8	191.5	190.5	190.8	188.6	185.9
10	Operating Expense per RTM	177.3	176.1	184.9	184.6	184.6	185.8	184.7
11	Operating Profit (Loss) per RTM	17.1	14.7	6.5	5.9	6.3	2.8	1.2
12	Operating Expense per ATM	123.3	116.4	123.9	122.1	121.0	120.9	119.1
13	Passenger Revenue per RPM	15.12	14.57	14.61	14.47	14.51	14.42	14.39
<u>FINANCIAL RATIOS:</u>								
14	Operating Revenues to Total Investment	*	*	2.61	2.71	2.75	2.75	2.72
15	Times Interest Earned	*	*	2.02	1.61	1.90	0.89	0.34
16	Current Assets to Current Liabilities	*	*	0.72	0.67	0.71	0.76	0.75
17	No. of Days Cash Coverage of Cash Exp.	*	*	59.84	52.26	53.14	59.47	61.67
<u>FINANCIAL PERCENTAGES:</u>								
18	Operating Profit (Loss) to Operating Revenue	8.8	7.7	3.4	3.1	3.3	1.5	0.7
19	Net Income to Stockholders Equity	*	*	26.33	19.88	35.33	-4.39	-27.92
20	Corporate Return on Investment	*	*	9.6	8.0	9.8	4.6	1.7
21	Debt to Total Investment	*	*	77.4	80.8	79.2	84.1	86.8
<u>PASSENGER LOAD FACTOR: (Sch. Svc. %)</u>								
22	Actual	85.4	85.0	83.9	83.8	83.9	83.9	83.8
23	Breakeven	81.7	84.1	87.5	88.2	88.3	90.3	90.8
<u>Employment &amp; Productivity:</u>								
24	Employment, Total Weighted Avg CY	80,297	82,511	81,309	81,862	82,200	82,340	82,343
25	Overall RTM's per Employee (000)	66.2	63.5	247.9	245.3	244.1	242.5	243.9

		CHANGE OVER COMPARABLE PERIOD 12 MONTHS EARLIER						
26	Operating Revenues (%)	3.3	0.6	3.3	2.6	3.0	0.5	-1.2
27	Operating Expenses (%)	2.1	-1.4	0.5	-0.4	-0.3	0.4	1.6
28	Operating Profit (Loss) (in Millions \$)	135.0	195.0	1,062.8	1,122.8	1,227.5	25.8	-1,032.4
29	Net Income (Loss)(in Millions \$)	285.2	114.5	1,197.8	1,027.0	1,315.0	138.9	-939.5
30	RPMs (Sch. Svc.) (%)	0.8	-2.1	0.6	-0.2	-0.5	-1.9	-2.4
31	ASMs (Sch. Svc.) (%)	0.3	-2.4	0.4	-0.3	-1.5	-3.2	-3.3
32	Operating Revenues per RTM (%)	1.9	3.7	3.0	3.5	4.8	3.8	2.0
33	Operating Expense per RTM (%)	0.7	1.6	0.1	0.4	1.4	3.7	4.9
34	Passenger Revenue per RPM (Sch. Svc.)(%)	3.8	0.4	1.5	0.6	1.2	0.3	-0.4

**QUARTERLY FINANCIAL & TRAFFIC REVIEW**  
**SYSTEM OPERATIONS**  
**System Cargo Majors**

ITEMS		QUARTER ENDED		12 MONTHS ENDED				
		2014/06	2013/06	2014/06	2014/03	2013/12	2013/09	2013/06
<u>FINANCIAL RESULTS: (\$Millions)</u>								
1	Operating Revenues	8,547.5	8,364.3	33,573.9	33,390.6	33,458.7	33,481.4	33,462.9
2	Operating Expenses	8,005.1	8,174.7	31,856.3	32,025.9	32,136.1	32,173.7	32,272.0
3	Operating Profit (Loss)	542.4	189.6	1,717.6	1,364.7	1,322.6	1,307.7	1,190.9
4	Net Income (Loss)	318.4	-21.0	863.9	524.4	563.5	548.0	470.2
<u>TRAFFIC: (Bllions)</u>								
5	RTMs - Scheduled Svc.	4.6	4.6	18.6	18.5	18.5	18.4	18.4
6	ATMs - Scheduled Svc.	7.8	7.8	31.4	31.4	31.4	31.3	31.3
7	Overall RTMs (All Svc.)	5.5	5.6	22.2	22.2	22.3	22.3	22.3
8	Overall ATMs (All Svc.)	9.4	9.6	38.0	38.2	38.3	38.2	38.3
<u>YIELD &amp; UNIT COST &amp; PROFITS: (Cents)</u>								
9	Operating Revenue per RTM	154.8	149.8	151.5	150.2	150.0	150.3	150.2
10	Operating Expense per RTM	145.0	146.4	143.7	144.1	144.0	144.4	144.9
11	Operating Profit (Loss) per RTM	9.8	3.4	7.7	6.1	5.9	5.9	5.3
12	Operating Expense per ATM	84.9	85.5	83.7	83.9	84.0	84.2	84.2
13	Passenger Revenue per RPM	*	*	*	*	*	*	*
<u>FINANCIAL RATIOS:</u>								
14	Operating Revenues to Total Investment	*	*	1.97	1.95	1.96	1.96	1.99
15	Times Interest Earned	*	*	10.88	7.14	7.24	6.42	6.15
16	Current Assets to Current Liabilities	*	*	0.95	1.09	0.35	0.55	0.41
17	No. of Days Cash Coverage of Cash Exp.	*	*	12.62	10.94	11.66	11.79	11.91
<u>FINANCIAL PERCENTAGES:</u>								
18	Operating Profit (Loss) to Operating Revenue	6.3	2.3	5.1	4.1	4.0	3.9	3.6
19	Net Income to Stockholders Equity	*	*	6.22	3.82	4.13	4.05	3.50
20	Corporate Return on Investment	*	*	5.9	3.9	4.1	4.1	3.6
21	Debt to Total Investment	*	*	15.8	21.1	16.2	21.1	18.9
<u>TON LOAD FACTOR: (%)</u>								
22	Scheduled Svc.	59.8	59.1	59.1	58.9	59.0	58.9	58.8
23	All Services	58.5	58.4	58.3	58.2	58.3	58.3	58.1
<u>Employment &amp; Productivity:</u>								
24	Employment, Total Weighted Avg CY	145,170	145,010	144,657	144,617	144,670	144,498	144,098
25	Overall RTM's per Employee (000)	38.0	38.5	153.2	153.7	154.2	154.1	154.6

		CHANGE OVER COMPARABLE PERIOD 12 MONTHS EARLIER						
26	Operating Revenues (%)	2.2	0.9	0.3	0.0	0.3	1.5	1.3
27	Operating Expenses (%)	-2.1	4.4	-1.3	0.3	1.4	2.8	3.6
28	Operating Profit (Loss) (in Millions \$)	352.9	-271.3	526.7	-97.5	-339.4	-380.3	-686.8
29	Net Income (Loss)(in Millions \$)	339.4	-234.7	393.6	-180.5	-206.0	-254.6	-588.7
30	RTMs (All Svc.) (%)	1.0	-0.3	0.9	0.6	0.5	-0.1	-0.4
31	ATMs (All Svc.) (%)	0.0	0.3	0.5	0.5	0.6	0.4	0.3
32	Operating Revenues per RTM (%)	3.3	-0.7	0.8	-0.1	-0.6	0.0	-0.6
33	Operating Expense per RTM (%)	-1.0	2.8	-0.8	0.2	0.5	1.3	1.7
34	Passenger Revenue per RPM (Sch. Svc.)(%)	*	*	**	**	**	**	**

1/ For comparison purposes, all data has been retroactively adjusted to include Continental.

**QUARTERLY FINANCIAL & TRAFFIC REVIEW**  
**SYSTEM OPERATIONS**  
**Domestic Cargo Majors**

ITEMS		QUARTER ENDED		12 MONTHS ENDED				
		2014/06	2013/06	2014/06	2014/03	2013/12	2013/09	2013/06
<u>FINANCIAL RESULTS: (\$Millions)</u>								
1	Operating Revenues	5,974.3	5,829.3	23,290.8	23,145.7	23,224.5	23,260.8	23,175.6
2	Operating Expenses	4,740.1	4,758.8	18,884.2	18,902.9	18,838.4	18,791.1	18,868.5
3	Operating Profit (Loss)	1,234.2	1,070.4	4,406.6	4,242.8	4,386.1	4,469.7	4,307.1
4	Net Income (Loss)	807.6	675.8	2,785.6	2,653.8	2,780.3	2,842.4	2,730.9
<u>TRAFFIC: (Bllions)</u>								
5	RTMs - Scheduled Svc.	2.4	2.3	9.7	9.6	9.6	9.5	9.5
6	ATMs - Scheduled Svc.	4.2	4.1	16.9	16.9	16.8	16.6	16.5
7	Overall RTMs (All Svc.)	2.6	2.5	10.2	10.2	10.2	10.2	10.2
8	Overall ATMs (All Svc.)	4.5	4.4	18.0	18.0	17.9	17.9	17.9
<u>YIELD &amp; UNIT COST &amp; PROFITS: (Cents)</u>								
9	Operating Revenue per RTM	234.1	232.1	227.9	227.4	228.1	228.4	228.1
10	Operating Expense per RTM	185.7	189.5	184.8	185.7	185.0	184.5	185.7
11	Operating Profit (Loss) per RTM	48.4	42.6	43.1	41.7	43.1	43.9	42.4
12	Operating Expense per ATM	106.4	107.7	104.8	105.1	105.1	105.0	105.5
13	Passenger Revenue per RPM	*	*	*	*	*	*	*
<u>FINANCIAL RATIOS:</u>								
14	Operating Revenues to Total Investment	*	*	**	**	**	**	**
15	Times Interest Earned	*	*	**	**	**	**	**
16	Current Assets to Current Liabilities	*	*	**	**	**	**	**
17	No. of Days Cash Coverage of Cash Exp.	*	*	**	**	**	**	**
<u>FINANCIAL PERCENTAGES:</u>								
18	Operating Profit (Loss) to Operating Revenue	20.7	18.4	18.9	18.3	18.9	19.2	18.6
19	Net Income to Stockholders Equity	*	*	7.99	4.66	4.62	4.52	3.59
20	Corporate Return on Investment	*	*	30.2	28.9	30.6	31.4	30.4
21	Debt to Total Investment	*	*	**	**	**	**	**
<u>TON LOAD FACTOR: (%)</u>								
22	Scheduled Svc.	58.1	57.2	57.0	56.8	57.0	57.1	57.1
23	All Services	57.3	56.8	56.7	56.6	56.8	56.9	56.8
<u>Employment &amp; Productivity:</u>								
24	Employment, Total Weighted Avg CY	*	*	**	**	**	**	**
25	Overall RTM's per Employee (000)	*	*	**	**	**	**	**

		CHANGE OVER COMPARABLE PERIOD 12 MONTHS EARLIER						
26	Operating Revenues (%)	2.5	1.4	0.5	0.2	0.4	2.8	3.0
27	Operating Expenses (%)	-0.4	2.8	0.1	0.9	0.5	0.7	0.9
28	Operating Profit (Loss) (in Millions \$)	163.8	-49.2	99.4	-113.5	-10.8	504.9	515.4
29	Net Income (Loss)(in Millions \$)	131.8	23.7	54.8	-53.3	56.9	386.9	351.0
30	RTMs (All Svc.) (%)	3.0	0.2	2.2	1.5	1.5	0.6	0.0
31	ATMs (All Svc.) (%)	1.5	1.0	2.3	2.2	2.2	1.2	0.7
32	Operating Revenues per RTM (%)	0.8	0.4	-0.1	-0.2	-0.5	1.2	1.2
33	Operating Expense per RTM (%)	-2.0	1.8	-0.5	0.5	-0.3	-0.9	-0.9
34	Passenger Revenue per RPM (Sch. Svc.)(%)	*	*	**	**	**	**	**

**QUARTERLY FINANCIAL & TRAFFIC REVIEW**  
**SYSTEM OPERATIONS**  
**Int'l Cargo Majors**

ITEMS		QUARTER ENDED		12 MONTHS ENDED				
		2014/06	2013/06	2014/06	2014/03	2013/12	2013/09	2013/06
<u>FINANCIAL RESULTS: (\$Millions)</u>								
1	Operating Revenues	2,255.2	2,237.2	9,032.2	9,014.2	9,001.9	8,996.8	9,053.2
2	Operating Expenses	2,968.4	3,137.0	11,851.7	12,020.3	12,189.8	12,290.4	12,313.6
3	Operating Profit (Loss)	-713.2	-899.8	-2,819.5	-3,006.1	-3,187.9	-3,293.6	-3,260.4
4	Net Income (Loss)	-504.3	-696.0	-1,979.1	-2,170.9	-2,263.5	-2,341.4	-2,317.3
<u>TRAFFIC: (Bllions)</u>								
5	RTMs - Scheduled Svc.	2.2	2.3	8.9	8.9	9.0	8.9	9.0
6	ATMs - Scheduled Svc.	3.6	3.7	14.5	14.6	14.6	14.7	14.8
7	Overall RTMs (All Svc.)	2.2	2.3	8.9	9.0	9.0	9.0	9.0
8	Overall ATMs (All Svc.)	3.6	3.7	14.6	14.6	14.8	14.9	14.9
<u>YIELD &amp; UNIT COST &amp; PROFITS: (Cents)</u>								
9	Operating Revenue per RTM	100.9	98.9	101.2	100.7	100.1	100.2	100.5
10	Operating Expense per RTM	132.8	138.7	132.7	134.2	135.6	136.9	136.7
11	Operating Profit (Loss) per RTM	-31.9	-39.8	-31.6	-33.6	-35.5	-36.7	-36.2
12	Operating Expense per ATM	81.8	84.7	81.3	82.1	82.7	82.8	82.4
13	Passenger Revenue per RPM	*	*	*	*	*	*	*
<u>FINANCIAL RATIOS:</u>								
14	Operating Revenues to Total Investment	*	*	**	**	**	**	**
15	Times Interest Earned	*	*	**	**	**	**	**
16	Current Assets to Current Liabilities	*	*	**	**	**	**	**
17	No. of Days Cash Coverage of Cash Exp.	*	*	**	**	**	**	**
<u>FINANCIAL PERCENTAGES:</u>								
18	Operating Profit (Loss) to Operating Revenue	-31.6	-40.2	-31.2	-33.3	-35.4	-36.6	-36.0
19	Net Income to Stockholders Equity	*	*	7.99	4.66	4.62	4.52	3.59
20	Corporate Return on Investment	*	*	-32.8	-35.7	-37.2	-38.0	-38.1
21	Debt to Total Investment	*	*	**	**	**	**	**
<u>TON LOAD FACTOR: (%)</u>								
22	Scheduled Svc.	61.8	61.3	61.4	61.3	61.2	60.9	60.7
23	All Services	61.6	61.1	61.3	61.2	61.0	60.5	60.3
<u>Employment &amp; Productivity:</u>								
24	Employment, Total Weighted Avg CY	*	*	**	**	**	**	**
25	Overall RTM's per Employee (000)	*	*	**	**	**	**	**

		CHANGE OVER COMPARABLE PERIOD 12 MONTHS EARLIER						
26	Operating Revenues (%)	0.8	1.3	-0.2	-0.1	0.7	-1.3	-3.0
27	Operating Expenses (%)	-5.4	7.7	-3.8	-0.6	2.8	6.4	8.1
28	Operating Profit (Loss) (in Millions \$)	186.6	-196.0	440.9	58.3	-275.8	-860.8	-1,199.8
29	Net Income (Loss)(in Millions \$)	191.8	-234.4	338.2	-88.0	-227.6	-610.4	-919.1
30	RTMs (All Svc.) (%)	-1.1	-0.8	-0.5	-0.4	-0.5	-0.8	-0.8
31	ATMs (All Svc.) (%)	-1.7	-0.4	-1.6	-1.3	-1.1	-0.5	-0.2
32	Operating Revenues per RTM (%)	2.0	2.6	0.6	0.8	1.6	-0.1	-1.9
33	Operating Expense per RTM (%)	-4.3	9.1	-2.9	0.3	3.8	7.7	9.3
34	Passenger Revenue per RPM (Sch. Svc.)(%)	*	*	**	**	**	**	**

**QUARTERLY FINANCIAL & TRAFFIC REVIEW**  
**SYSTEM OPERATIONS**  
**Atlas Air**

ITEMS		QUARTER ENDED		12 MONTHS ENDED				
		2014/06	2013/06	2014/06	2014/03	2013/12	2013/09	2013/06
<u>FINANCIAL RESULTS: (\$Millions)</u>								
1	Operating Revenues	399.5	369.4	1,552.1	1,522.0	1,516.4	1,504.5	1,518.3
2	Operating Expenses	371.2	338.6	1,392.8	1,360.2	1,353.5	1,334.4	1,325.5
3	Operating Profit (Loss)	28.3	30.8	159.3	161.8	162.9	170.1	192.8
4	Net Income (Loss)	20.4	6.4	68.9	54.9	67.1	65.9	85.1
<u>TRAFFIC: (Bllions)</u>								
5	RTMs - Scheduled Svc.	0.0	0.0	0.0	0.0	0.0	0.0	0.0
6	ATMs - Scheduled Svc.	0.0	0.0	0.0	0.0	0.0	0.0	0.0
7	Overall RTMs (All Svc.)	0.9	1.0	3.6	3.7	3.7	3.8	3.8
8	Overall ATMs (All Svc.)	1.7	1.8	6.5	6.7	6.7	6.8	6.8
<u>YIELD &amp; UNIT COST &amp; PROFITS: (Cents)</u>								
9	Operating Revenue per RTM	45.4	37.5	43.4	41.3	40.6	39.6	39.8
10	Operating Expense per RTM	42.2	34.4	38.9	36.9	36.2	35.1	34.7
11	Operating Profit (Loss) per RTM	3.2	3.1	4.5	4.4	4.4	4.5	5.0
12	Operating Expense per ATM	22.5	19.2	21.3	20.5	20.2	19.8	19.4
13	Passenger Revenue per RPM	*	*	*	*	*	*	*
<u>FINANCIAL RATIOS:</u>								
14	Operating Revenues to Total Investment	*	*	0.72	0.70	0.69	0.70	0.74
15	Times Interest Earned	*	*	1.89	2.01	1.94	1.81	2.23
16	Current Assets to Current Liabilities	*	*	1.00	0.99	1.00	1.00	1.83
17	No. of Days Cash Coverage of Cash Exp.	*	*	29.29	27.86	48.47	48.92	75.98
<u>FINANCIAL PERCENTAGES:</u>								
18	Operating Profit (Loss) to Operating Revenue	7.1	8.3	10.3	10.6	10.7	11.3	12.7
19	Net Income to Stockholders Equity	*	*	10.84	8.48	10.08	9.77	12.56
20	Corporate Return on Investment	*	*	6.7	6.2	6.9	7.6	8.5
21	Debt to Total Investment	*	*	71.2	72.3	69.3	69.3	70.5
<u>TON LOAD FACTOR: (%)</u>								
22	Scheduled Svc.	0.0	0.0	0.0	0.0	0.0	0.0	0.0
23	All Services	53.3	55.8	54.8	55.4	55.9	56.3	55.9
<u>Employment &amp; Productivity:</u>								
24	Employment, Total Weighted Avg CY	1,697	1,685	1,680	1,677	1,672	1,656	1,634
25	Overall RTM's per Employee (000)	518.1	584.0	2,130.3	2,196.6	2,235.6	2,296.3	2,337.1

		CHANGE OVER COMPARABLE PERIOD 12 MONTHS EARLIER						
26	Operating Revenues (%)	8.1	-6.5	2.2	-1.4	-0.9	2.6	6.8
27	Operating Expenses (%)	9.6	-1.2	5.1	2.3	3.2	4.4	6.1
28	Operating Profit (Loss) (in Millions \$)	-2.5	-21.5	-33.5	-52.5	-56.1	-18.2	20.5
29	Net Income (Loss)(in Millions \$)	14.0	-20.0	-16.2	-50.2	-36.1	-29.5	-5.5
30	RTMs (All Svc.) (%)	0.0	0.0	0.0	0.0	0.0	0.0	0.0
31	ATMs (All Svc.) (%)	0.0	0.0	0.0	0.0	0.0	0.0	0.0
32	Operating Revenues per RTM (%)	21.0	-17.2	9.1	-0.8	-4.8	-7.9	-7.5
33	Operating Expense per RTM (%)	22.7	-12.5	12.1	2.9	-0.8	-6.3	-8.1
34	Passenger Revenue per RPM (Sch. Svc.)(%)	*	*	**	**	**	**	**



**QUARTERLY FINANCIAL & TRAFFIC REVIEW**  
**SYSTEM OPERATIONS**  
**Federal Express**

ITEMS		QUARTER ENDED		12 MONTHS ENDED				
		2014/06	2013/06	2014/06	2014/03	2013/12	2013/09	2013/06
<u>FINANCIAL RESULTS: (\$Millions)</u>								
1	Operating Revenues	6,676.4	6,586.0	26,150.0	26,059.6	26,144.6	26,182.9	26,138.4
2	Operating Expenses	6,253.5	6,518.9	24,942.4	25,207.7	25,321.8	25,385.3	25,477.6
3	Operating Profit (Loss)	422.9	67.2	1,207.6	851.9	822.9	797.6	660.8
4	Net Income (Loss)	273.5	-38.4	732.6	420.7	413.0	400.0	314.2
<u>TRAFFIC: (Bllions)</u>								
5	RTMs - Scheduled Svc.	2.7	2.8	11.0	11.0	11.1	11.1	11.1
6	ATMs - Scheduled Svc.	4.8	4.8	19.3	19.3	19.3	19.3	19.3
7	Overall RTMs (All Svc.)	2.8	2.8	11.0	11.0	11.1	11.1	11.2
8	Overall ATMs (All Svc.)	4.8	4.8	19.4	19.3	19.4	19.4	19.5
<u>YIELD &amp; UNIT COST &amp; PROFITS: (Cents)</u>								
9	Operating Revenue per RTM	243.1	238.8	237.2	236.1	235.3	235.2	234.5
10	Operating Expense per RTM	227.7	236.3	226.2	228.4	227.9	228.0	228.6
11	Operating Profit (Loss) per RTM	15.4	2.4	11.0	7.7	7.4	7.2	5.9
12	Operating Expense per ATM	129.7	136.2	128.8	130.4	130.6	130.7	130.9
13	Passenger Revenue per RPM	*	*	*	*	*	*	*
<u>FINANCIAL RATIOS:</u>								
14	Operating Revenues to Total Investment	*	*	2.78	2.81	2.85	2.88	2.90
15	Times Interest Earned	*	*	999.90	999.90	999.90	999.90	999.90
16	Current Assets to Current Liabilities	*	*	0.96	0.92	0.92	0.92	0.87
17	No. of Days Cash Coverage of Cash Exp.	*	*	13.24	11.27	11.34	11.80	10.57
<u>FINANCIAL PERCENTAGES:</u>								
18	Operating Profit (Loss) to Operating Revenue	6.3	1.0	4.6	3.3	3.1	3.0	2.5
19	Net Income to Stockholders Equity	*	*	7.99	4.66	4.62	4.52	3.59
20	Corporate Return on Investment	*	*	7.7	4.4	4.3	4.2	3.2
21	Debt to Total Investment	*	*	2.4	2.5	2.6	2.6	2.7
<u>TON LOAD FACTOR: (%)</u>								
22	Scheduled Svc.	57.1	57.7	57.0	57.2	57.4	57.5	57.5
23	All Services	57.0	57.6	56.9	57.1	57.3	57.3	57.3
<u>Employment &amp; Productivity:</u>								
24	Employment, Total Weighted Avg CY	138,070	137,887	137,575	137,529	137,569	137,393	136,992
25	Overall RTM's per Employee (000)	19.9	20.0	80.1	80.3	80.8	81.0	81.4
		<b>CHANGE OVER COMPARABLE PERIOD 12 MONTHS EARLIER</b>						
26	Operating Revenues (%)	1.4	2.4	0.0	0.3	0.8	2.1	1.8
27	Operating Expenses (%)	-4.1	6.6	-2.1	0.5	2.0	3.8	4.8
28	Operating Profit (Loss) (in Millions \$)	355.7	-252.0	546.8	-60.9	-273.5	-369.1	-707.6
29	Net Income (Loss)(in Millions \$)	311.9	-148.8	418.4	-42.3	-183.1	-242.6	-471.1
30	RTMs (All Svc.) (%)	-0.6	0.0	-0.9	-0.8	0.0	0.2	0.4
31	ATMs (All Svc.) (%)	0.5	0.5	-0.1	-0.1	0.4	0.9	1.4
32	Operating Revenues per RTM (%)	1.8	2.7	1.2	1.4	1.0	2.2	1.6
33	Operating Expense per RTM (%)	-3.6	7.0	-1.0	1.6	2.2	3.8	4.6
34	Passenger Revenue per RPM (Sch. Svc.)(%)	*	*	**	**	**	**	**

**QUARTERLY FINANCIAL & TRAFFIC REVIEW**  
**SYSTEM OPERATIONS**  
**United Parcel Service**

ITEMS		QUARTER ENDED		12 MONTHS ENDED				
		2014/06	2013/06	2014/06	2014/03	2013/12	2013/09	2013/06
<u>FINANCIAL RESULTS: (\$Millions)</u>								
1	Operating Revenues	1,471.7	1,408.9	5,871.8	5,809.0	5,797.6	5,794.0	5,806.2
2	Operating Expenses	1,380.4	1,317.3	5,521.2	5,458.1	5,460.8	5,454.0	5,468.9
3	Operating Profit (Loss)	91.2	91.6	350.6	351.0	336.8	339.9	337.3
4	Net Income (Loss)	24.5	11.0	62.4	48.8	83.3	82.1	70.9
<u>TRAFFIC: (Bllions)</u>								
5	RTMs - Scheduled Svc.	1.9	1.8	7.6	7.5	7.5	7.3	7.3
6	ATMs - Scheduled Svc.	3.0	3.0	12.1	12.2	12.1	12.0	12.0
7	Overall RTMs (All Svc.)	1.9	1.8	7.6	7.5	7.5	7.3	7.3
8	Overall ATMs (All Svc.)	3.0	3.0	12.1	12.2	12.2	12.1	12.0
<u>YIELD &amp; UNIT COST &amp; PROFITS: (Cents)</u>								
9	Operating Revenue per RTM	77.6	76.6	77.7	77.4	77.7	78.9	79.4
10	Operating Expense per RTM	72.8	71.6	73.0	72.7	73.2	74.3	74.8
11	Operating Profit (Loss) per RTM	4.8	5.0	4.6	4.7	4.5	4.6	4.6
12	Operating Expense per ATM	46.6	43.8	45.5	44.8	44.9	45.2	45.4
13	Passenger Revenue per RPM	*	*	*	*	*	*	*
<u>FINANCIAL RATIOS:</u>								
14	Operating Revenues to Total Investment	*	*	1.07	1.03	1.02	0.99	1.00
15	Times Interest Earned	*	*	3.64	2.94	3.19	2.98	2.76
16	Current Assets to Current Liabilities	*	*	0.92	2.07	-3.04	-2.08	-3.33
17	No. of Days Cash Coverage of Cash Exp.	*	*	5.41	5.05	3.83	2.35	2.38
<u>FINANCIAL PERCENTAGES:</u>								
18	Operating Profit (Loss) to Operating Revenue	6.2	6.5	6.0	6.0	5.8	5.9	5.8
19	Net Income to Stockholders Equity	*	*	1.53	1.20	2.06	2.04	1.77
20	Corporate Return on Investment	*	*	2.3	2.0	2.7	2.7	2.5
21	Debt to Total Investment	*	*	17.7	31.7	20.3	33.2	23.7
<u>TON LOAD FACTOR: (%)</u>								
22	Scheduled Svc.	64.2	61.2	62.3	61.7	61.4	61.1	60.9
23	All Services	64.0	61.1	62.3	61.6	61.3	60.9	60.8
<u>Employment &amp; Productivity:</u>								
24	Employment, Total Weighted Avg CY	5,403	5,438	5,402	5,411	5,429	5,449	5,472
25	Overall RTM's per Employee (000)	350.9	338.3	1,399.5	1,386.8	1,373.7	1,347.0	1,336.3
		<b>CHANGE OVER COMPARABLE PERIOD 12 MONTHS EARLIER</b>						
26	Operating Revenues (%)	4.5	-3.6	1.1	-0.8	-1.5	-1.5	-2.1
27	Operating Expenses (%)	4.8	-4.0	1.0	-1.2	-1.4	-1.8	-2.2
28	Operating Profit (Loss) (in Millions \$)	-0.4	2.1	13.3	15.9	-9.8	7.0	0.3
29	Net Income (Loss)(in Millions \$)	13.5	-65.9	-8.5	-87.9	13.3	17.5	-112.1
30	RTMs (All Svc.) (%)	3.4	-0.8	3.6	2.6	1.3	-0.5	-1.6
31	ATMs (All Svc.) (%)	-0.8	-0.1	1.3	1.5	0.9	-0.4	-1.4
32	Operating Revenues per RTM (%)	1.4	-2.8	-2.2	-3.2	-2.7	-0.8	-0.4
33	Operating Expense per RTM (%)	1.7	-3.2	-2.4	-3.5	-2.6	-1.1	-0.5
34	Passenger Revenue per RPM (Sch. Svc.)(%)	*	*	**	**	**	**	**

**Comparison of Operating Profit (Loss)  
For Individual Passenger and All-Cargo System Majors  
Quarterly and 12-Month Ended Periods  
June 2013 and 2014**

<b>Operating Profit (Loss) (\$Millions)</b>						
<b>Group/Carrier</b>	<b>Quarterly Data</b>			<b>12 Month Ended Data</b>		
	<b>6/2013</b>	<b>6/2014</b>	<b>\$Chg</b>	<b>6/2013</b>	<b>6/2014</b>	<b>\$Chg</b>
System Passenger Majors	3,499.0	5,257.8	1,758.8	6,866.1	13,407.9	6,541.9
Alaska Airlines	189.5	257.5	68.0	597.4	989.4	392.0
American Airlines	478.0	718.1	240.1	545.5	2,258.8	1,713.3
Envoy Air	12.1	13.0	0.9	61.5	34.0	(27.6)
Frontier Airlines	5.7	57.9	52.2	12.7	119.3	106.6
Hawaiian Airlines	39.6	54.1	14.5	115.2	175.7	60.5
JetBlue Airways	93.3	140.5	47.2	310.5	446.3	135.9
SkyWest Airlines	51.2	42.0	(9.2)	177.4	161.1	(16.3)
Delta Air Lines	949.0	1,615.7	666.7	3,201.0	4,853.7	1,652.7
Southwest Airlines	432.7	775.4	342.6	645.0	1,766.1	1,121.1
United Air Lines	771.1	906.1	135.0	250.5	1,313.3	1,062.8
US Airways	476.9	677.7	200.8	949.5	1,290.3	340.8
System Cargo Majors	189.6	542.4	352.9	1,190.9	1,717.6	526.7
Atlas Air	30.8	28.3	(2.5)	192.8	159.3	(33.5)
Federal Express	67.2	422.9	355.7	660.8	1,207.6	546.8
United Parcel Service	91.6	91.2	(0.4)	337.3	350.6	13.3
System All Majors	3,688.6	5,800.3	2,111.7	8,057.0	15,125.5	7,068.6
System Passenger Majors	2,142.8	3,400.9	1,258.2	2,933.3	13,904.8	10,971.5

1/ Delta Air Lines data has been retroactively adjusted to include Northwest.

2/ United Airlines data has been retroactively adjusted to include Continental.

3/ Southwest Airlines data has been retroactively adjusted to include AirTran.

**Comparison of Net Income (Loss)**  
**For Individual Passenger and All-Cargo System Majors**  
**Quarterly and 12-Month Ended Periods**  
**June 2013 and 2014**

Group/Carrier	Net Income (Loss) (\$Millions)					
	Quarterly Data			12 Month Ended Data		
	6/2013	6/2014	\$Chg	6/2013	6/2014	\$Chg
System Passenger Majors	2,142.8	3,400.9	1,258.2	2,933.3	13,904.8	10,971.5
Alaska Airlines	102.2	166.0	63.8	334.9	620.6	285.7
American Airlines	227.8	265.4	37.7	(11.2)	(834.5)	(823.3)
Envoy Air	12.5	8.1	(4.4)	(59.5)	26.7	86.2
Frontier Airlines	3.0	35.1	32.1	(4.7)	71.3	75.9
Hawaiian Airlines	14.5	29.8	15.2	48.8	89.0	40.2
JetBlue Airways	36.4	230.6	194.3	95.3	347.2	251.9
SkyWest Airlines	24.7	19.1	(5.6)	80.8	74.2	(6.6)
Delta Air Lines	688.7	807.4	118.7	1,845.0	10,879.3	9,034.4
Southwest Airlines	224.0	465.0	241.0	376.9	1,089.4	712.4
United Air Lines	484.0	769.2	285.2	(477.0)	720.8	1,197.8
US Airways	325.0	605.2	280.2	703.9	820.9	116.9
System Cargo Majors	(21.0)	318.4	339.4	470.2	863.9	393.6
Atlas Air	6.4	20.4	14.0	85.1	68.9	(16.2)
Federal Express	(38.4)	273.5	311.9	314.2	732.6	418.4
United Parcel Service	11.0	24.5	13.5	70.9	62.4	(8.5)
System All Majors	2,121.8	3,719.4	1,597.6	3,403.6	14,768.7	11,365.1

1/ Delta Air Lines data has been retroactively adjusted to include Northwest.

2/ United Airlines data has been retroactively adjusted to include Continental.

3/ Southwest Airlines data has been retroactively adjusted to include AirTran.

e

**Comparison of Passenger Load Factors  
For Individual Passenger and All-Cargo System Majors  
Quarterly and 12-Month Ended Periods  
June 2013 and 2014**

<b>Passenger Load Factor (Percent)</b>						
<b>Group/Carrier</b>	<b>Quarterly Data</b>			<b>12 Month Ended Data</b>		
	<b>6/2013</b>	<b>6/2014</b>	<b>Pt.Chg.</b>	<b>6/2013</b>	<b>6/2014</b>	<b>Pt.Chg.</b>
System Passenger Majors	84.6	85.2	0.5	83.6	83.7	0.1
Alaska Airlines	86.9	86.9	(0.1)	86.5	86.0	(0.5)
American Airlines	84.8	84.2	(0.6)	83.2	82.8	(0.4)
Envoy Air	77.1	79.1	2.0	75.3	76.8	1.4
Frontier Airlines	91.4	90.8	(0.6)	90.5	90.9	0.5
Hawaiian Airlines	80.8	79.4	(1.5)	81.8	80.5	(1.2)
JetBlue Airways	84.9	84.6	(0.3)	83.9	83.4	(0.4)
SkyWest Airlines	82.9	84.6	1.7	82.5	82.9	0.3
Delta Air Lines	85.7	87.1	1.4	85.1	85.5	0.4
Southwest Airlines	81.5	83.9	2.3	80.2	81.2	1.0
United Air Lines	85.0	85.4	0.4	83.8	83.9	0.1
US Airways	86.1	84.4	(1.7)	85.2	84.2	(1.0)
System All Majors	84.6	85.2	0.5	83.6	83.7	0.1

1/ Delta Air Lines data has been retroactively adjusted to include Northwest.

2/ United Airlines data has been retroactively adjusted to include Continental.

3/ Southwest Airlines data has been retroactively adjusted to include AirTran.

**Comparison of Scheduled Passenger Yields (Cents)**  
**For Individual Passenger and All-Cargo System Majors**  
**Quarterly and 12-Month Ended Periods**  
**June 2013 and 2014**

Group/Carrier	Quarterly Data			12 Month Ended Data		
	6/2013	6/2014	Pct.Chg.	6/2013	6/2014	Pct.Chg.
System Passenger Majors	14.58	15.37	5.4	14.41	15.01	4.2
Alaska Airlines	13.37	13.92	4.1	13.38	13.64	1.9
American Airlines	14.87	16.02	7.7	14.85	15.72	5.8
Envoy Air	10.87	11.30	4.0	11.15	11.28	1.1
Frontier Airlines	12.31	12.42	0.8	12.02	12.42	3.3
Hawaiian Airlines	14.11	14.94	5.9	14.01	14.62	4.4
JetBlue Airways	13.40	14.25	6.4	13.49	14.15	4.9
SkyWest Airlines	11.67	11.78	0.9	12.17	11.83	(2.8)
Delta Air Lines	14.73	15.56	5.6	14.60	15.25	4.4
Southwest Airlines	18.31	18.01	(1.7)	18.11	18.21	0.6
United Air Lines	14.57	15.12	3.8	14.39	14.61	1.5
US Airways	14.54	15.22	4.7	13.99	14.74	5.4

1/ Delta Air Lines data has been retroactively adjusted to include Northwest.

2/ United Airlines data has been retroactively adjusted to include Continental.

3/ Southwest Airlines data has been retroactively adjusted to include AirTran.

**Comparison of Operating Profit Margin (Percent)  
For Individual Passenger and All-Cargo System Majors  
Quarterly and 12-Month Ended Periods  
June 2013 and 2014**

Operating Profit Margin (Percent)						
Group/Carrier	Quarterly Data			12 Month Ended Data		
	6/2013	6/2014	Pt. Chg	6/2013	6/2014	Pt. Chg.
System Passenger Majors	9.0	12.5	3.5	4.7	8.6	3.9
Alaska Airlines	15.1	18.8	3.7	12.5	18.5	6.0
American Airlines	7.4	10.0	2.6	2.2	8.4	6.2
Envoy Air	4.2	4.9	0.7	5.4	3.1	(2.3)
Frontier Airlines	1.7	14.7	13.0	0.9	8.3	7.4
Hawaiian Airlines	7.4	9.4	2.0	5.6	7.9	2.3
JetBlue Airways	7.0	9.4	2.4	6.0	7.9	1.9
SkyWest Airlines	11.0	8.8	(2.2)	9.6	8.8	(0.9)
Delta Air Lines	9.8	15.2	5.4	8.7	12.4	3.7
Southwest Airlines	9.3	15.5	6.2	3.7	9.7	6.0
United Air Lines	7.7	8.8	1.1	0.7	3.4	2.7
US Airways	12.1	15.9	3.8	6.6	8.4	1.8
System Cargo Majors	2.3	6.3	4.1	3.6	5.1	1.6
Atlas Air	8.3	7.1	(1.3)	12.7	10.3	(2.4)
Federal Express	1.0	6.3	5.3	2.5	4.6	2.1
United Parcel Service	6.5	6.2	(0.3)	5.8	6.0	0.2
System All Majors	7.8	11.5	3.7	4.5	8.0	3.5

1/ Delta Air Lines data has been retroactively adjusted to include Northwest.

2/ United Airlines data has been retroactively adjusted to include Continental.

3/ Southwest Airlines data has been retroactively adjusted to include AirTran.

**Comparison of Debt-to-Investment and Total Debt  
For Individual Passenger and All-Cargo System Majors  
Quarterly and 12-Month Ended Periods  
June 2013 and 2014**

Group/Carrier	Debt To Investment (Percent)			Total Debt (\$Billions)		
	Quarterly Data			Quarterly Data		
	6/2013	6/2014	Pt.Chg.	6/2013	6/2014	\$ Chg.
System Passenger Majors	85.6	56.9	(28.8)	47.0	46.7	(0.2)
Alaska Airlines	27.8	17.8	(10.1)	0.6	0.5	(0.1)
American Airlines	(2,496.3)	155.2	2,651.5	9.7	10.6	0.9
Envoy Air	0.6	0.4	(0.2)	0.0	0.0	0.0
Frontier Airlines	44.8	53.0	8.2	0.1	0.1	(0.0)
Hawaiian Airlines	79.3	76.0	(3.4)	0.7	1.1	0.3
JetBlue Airways	59.3	50.8	(8.6)	2.8	2.4	(0.4)
SkyWest Airlines	43.3	45.3	1.9	0.9	1.1	0.1
Delta Air Lines	85.2	40.2	(44.9)	12.2	10.3	(1.9)
Southwest Airlines	30.2	26.8	(3.4)	2.9	2.8	(0.2)
United Air Lines	86.8	77.4	(9.4)	11.8	12.2	0.5
US Airways	71.4	48.3	(23.1)	5.1	5.6	0.5
System Cargo Majors	18.9	15.8	(3.2)	3.2	2.7	(0.5)
Atlas Air	70.5	71.2	0.7	1.7	1.6	(0.1)
Federal Express	2.7	2.4	(0.2)	0.2	0.2	(0.0)
United Parcel Service	23.7	17.7	(6.0)	1.3	0.9	(0.4)
System All Majors	70.0	49.8	(20.2)	50.1	49.4	(0.7)

1/ Delta Air Lines data has been retroactively adjusted to include Northwest.

2/ United Airlines data has been retroactively adjusted to include Continental.

3/ Southwest Airlines data has been retroactively adjusted to include AirTran.



## FOOTNOTES

- \* Not calculated on a quarterly basis.
- \*\* Cannot be calculated because balance sheet data not presented on an entity basis.  
Data presented only on a system basis.
- ++ Not calculated for all-cargo carriers.
- # Meaningful calculation cannot be made because of negative data.
- & Over +/- 500 percent.

EXPLANATION OF LINE ITEMS

LINE #	DESCRIPTION OF LINE ITEM	DERIVATION OF LINE ITEM
1	Operating Revenues	Operating Revenues (Account 4999)
2	Operating Expenses	Operating Expenses (Account 7199)
3	Operating Profit or Loss	Operating Profit (Account 7999)
4	Net Income or Loss	Net Income (Account 9899)
5	Overall Revenue Ton-miles	Overall Revenue Ton-miles (Item Z-240)
6	Overall Available Ton-miles	Overall Available Ton-miles (Item Z-280)
7	Revenue Passenger-Miles (Scheduled Service)	Total scheduled revenue passenger-miles (Item K-140)
8	Available Seat-Miles (Scheduled Service)	Total scheduled available seat-miles (Item K-280)
9	Operating revenue per revenue ton-mile	$\frac{\text{Operating revenues (Account 4999)}}{\text{Overall revenue ton-miles (Item Z-240)}}$
10	Operating expense per revenue ton-mile	$\frac{\text{Operating expenses (Account 7199)}}{\text{Overall revenue ton-miles (Item Z-240)}}$
11	Operating profit per revenue ton-mile	$\frac{\text{Operating profit (Account 7999)}}{\text{Overall revenue ton-miles (Item Z-240)}}$
12	Operating expense per available ton-mile	$\frac{\text{Operating expenses (Account 7199)}}{\text{Overall available ton-miles (Item Z-280)}}$
13	Passenger revenue per revenue passenger-mile (scheduled service)	$\frac{\text{Passenger revenues (scheduled service) (Account 3901)}}{\text{Total revenue passenger-miles (scheduled service) (Item K-140)}}$
14	Operating revenues to total investment	$\frac{\text{Operating revenue (Account 4999)}}{\text{Total investment (See line 20)}}$
15	Times interest earned	$\frac{\text{Income Before income taxes (Account 8999) + interest on long-term debt and capital leases (Account 8181) + Other interest expense (Account 8182)}}{\text{Interest on long-term debt and capital leases (Account 8181) + Other interest expense (Account 8182)}}$
16	Current assets to current liabilities	$\frac{\text{Current assets (Account 1499)}}{\text{Current liabilities (Account 2199)}}$
17	Number of days coverage of cash operating expenses	$\frac{\text{Cash (Account 1010) + short-term investments (Account 1100)}}{[\text{Total operating expenses (Account 7199) less depreciation and amortization (Account 7000)}] / 365}$
18	Operating Profit to operating revenues	$\frac{\text{Operating profit (Account 7999)}}{\text{Operating revenues (Account 4999)}}$
19	Net income to stockholders' equity	$\frac{\text{Net income (Account 9999)}}{\text{Stockholders' equity (Account 2995) (5 Quarter average)}}$

EXPLANATION OF LINE ITEMS

LINE #	DESCRIPTION OF LINE ITEM	DERIVATION OF LINE ITEM
20	Overall corporate rate of return	<p>Net income plus interest expense</p> <hr/> <p>Total investment</p> <p>Net income plus interest expense is:  Net income (Account 9899) + interest on long-term debt and capital leases (Account 8181) + other interest expense (Account 8182) + amortization of debt discount, premium and expense (Account 8184).</p> <p>Total investment is:  Current maturities of long-term debt (Account 2000) + current obligations under capital leases (Account 2080) + long-term debt (Account 2210) + advances from associated companies (Account 2240) + noncurrent obligations under capital leases (Account 2280) + stockholders' equity (Account 2995) - unamortized debt expense (Account 1840). (A five-quarter average is used).</p>
21	Debt to total investment (end of period)	<p>Current maturities of long-term debt (Account 2000) + current obligations under capital leases (Account 2080) + long-term debt (Account 2210) + advances from associated companies (Account 2240) + noncurrent obligations under capital leases (Account 2280) - unamortized debt expense (Account 1840)</p> <hr/> <p>Total investment (See line 20)</p>
22	Actual passenger load factor (scheduled service)	<p>Revenue passenger-miles (scheduled service (Item K-140)</p> <hr/> <p>Available seat-miles (scheduled service (Item K-280)</p>
23	Operating breakeven load factor (scheduled service)	<p>Capacity operating expense, scheduled service (passenger)</p> <hr/> <p>[Scheduled passenger revenue (Account 3901) - Traffic operating expense, passenger scheduled service] / Actual passenger load factor, scheduled service</p>
24	Difference, actual-breakeven load factor	<p>Actual (Line 22) - Breakeven (Line 23)</p>
25	Employees	<p>Sum of full time and one-half part time employees(Average for 12-month ended period)</p>
26	Overall revenue ton-miles per employee	<p>Overall revenue ton-miles (Item Z-240)</p> <hr/> <p>Average # of employees (See Line 25)</p>