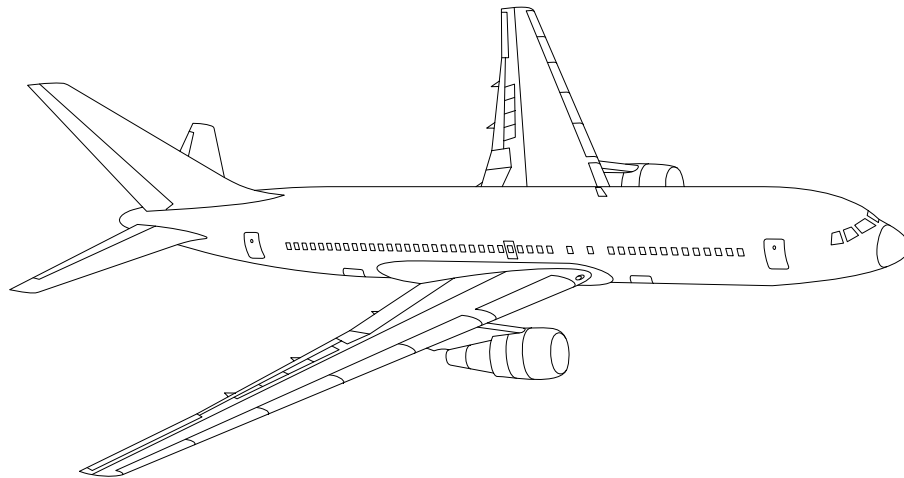


# AIRLINE QUARTERLY FINANCIAL REVIEW

SECOND QUARTER 2013



MAJORS



DEPARTMENT OF TRANSPORTATION  
OFFICE OF AVIATION ANALYSIS  
COMPETITION AND POLICY ANALYSIS DIVISION

# TABLE OF CONTENTS

	DESCRIPTION	PAGE
Introduction .....		3
Total System Passenger & All-Cargo Majors .....		4
Chart 1	Operating and Net Profit (Loss) Second Quarter 2013 .....	7
Chart 2	Operating and Net Profit (Loss) 12 Months Ended Second Quarter 2013 .....	7
Chart 3	Operating Profit (Loss) By Quarter .....	8
Chart 4	Net Income (Loss) By Quarter .....	8
Chart 5	Operating Profit (Loss) By 12-Month Ending Periods .....	9
Chart 6	Net Income (Loss) By 12-Month Ending Periods .....	9
Chart 7	Operating Revenue Per Revenue Ton-Mile Percent Change From Same Period A Year Earlier .....	10
Chart 8	Ton Load Factor Percentage Point Change From Year Earlier...	10
Chart 9	Operating Expense Per Revenue Ton-Mile, Percent Change From Same Period A Year Earlier .....	11
Chart 10	Operating Expense Per Available Ton-Mile, Percent Change From Same Period A Year Earlier .....	11
Total Passenger Majors .....		12
Chart 11	Passenger Revenues Per Revenue Passenger-Mile, Percent Change From Same Period A Year Earlier .....	15
Chart 12	Revenue Passenger-Miles, Percent Change From Same Period A Year Earlier .....	15
Chart 13	Available Seat-Miles, Percent Change From Same Period A Year Earlier .....	16
Chart 14	Passenger Load Factor, Percentage Point Change From Same Period A Year Earlier .....	16
Chart 15	Passenger (RPM) Yield .....	17
Chart 16	Passenger Load Factor .....	17
Alaska Airlines, Inc. ....		18
American Airlines, Inc. ....		19
American Eagle, Inc. ....		20
Delta Air Lines, Inc. ....		21
Frontier Airlines .....		22
Hawaiian Airlines .....		23
JetBlue Airways .....		24
Skywest Airlines Co. ....		25
Southwest Airlines Co. ....		26
US Airways, Inc. ....		27
United Air Lines, Inc. ....		28
Total All-Cargo Majors .....		29
Atlas Air .....		32
Federal Express Corp. ....		33
United Parcel Service .....		34
Comparison of Individual Major Operating Profit (Loss) .....		35
Comparison of Individual Major Net Income (Loss) .....		36
Comparison of Individual Major Scheduled Passenger Load Factor .....		37
Comparison of Individual Major Scheduled Passenger Yield .....		38
Comparison of Individual Major Operating Profit Margin .....		39
Comparison of Individual Major Debt To Investment Ratio and Total Debt ..		40
Footnotes .....		41
Explanation of Line Items .....		42

## INTRODUCTION

This report contains staff comments, tables and charts on the financial condition of the U.S. major airlines.

The data are presented on both a carrier group and an individual carrier basis, but the primary focus is on the individual major carrier and its performance. Data are presented for the most recent quarterly period and the comparable quarter a year earlier and also on a 12-month ended basis as at the end of the five most recent quarters. In addition, data on charges over comparable periods 12-months earlier are presented. A graphic presentation of comparative trends, on a carrier group basis, is made for several unit and overall financial indicators. In the case of merged carriers, data for the carriers involved have been combined and presented under the name of the surviving carrier so that meaningful comparisons could be made.

All data presented in this financial and traffic review are derived from data reported to the U.S. Department of Transportation on Form 41 Schedules by Large Certificated Air Carriers. For comparison purposes, this analysis is limited to the major scheduled passenger and all-cargo air carriers only. Alaska Airlines, with revenues exceeding \$1 billion in calendar year 1995, became a major airline effective January 1, 1996, and is now included in this review. All financial and traffic results have been retroactively restated to include the operations of Alaska. Certain data in this review is classified in two broad categories: namely "domestic" and "international". "Domestic" encompasses operations within and between the 50 states of the United States, the District of Columbia, the Commonwealth of Puerto Rico, and the U.S. Virgin Islands. It also encompasses Canadian transborder operations and for certain carriers Mexican transborder operations. All other operations are considered "international", which is separated into Atlantic, Latin, and Pacific.

Suggestions from users for the improving either the scope, presentation, or utility of this review are invited. It will also be appreciated if suggestions, discrepancies, and errors in the data are called to the attention of the Economic & Financial Division, Office of Aviation Analysis, Office of the Secretary, U.S. Department of Transportation, Washington, D.C. 20590.

# QUARTERLY FINANCIAL & TRAFFIC REVIEW

## SYSTEM OPERATIONS

### System All Majors

ITEMS		QUARTER ENDED		12 MONTHS ENDED				
		2013/06	2012/06	2013/06	2013/03	2012/12	2012/09	2012/06
	<u>FINANCIAL RESULTS: (\$Millions)</u>							
1	Operating Revenues	47,312.0	46,499.5	180,412.0	179,599.4	178,913.2	178,449.6	178,745.5
2	Operating Expenses	43,614.7	43,271.1	172,338.3	171,994.7	171,304.6	170,695.0	170,655.9
3	Operating Profit (Loss)	3,697.4	3,228.4	8,073.8	7,604.8	7,608.6	7,754.5	8,089.6
4	Net Income (Loss)	2,126.8	1,168.7	3,414.1	2,455.9	1,257.3	1,080.6	1,031.4
	<u>TRAFFIC: (Billions)</u>							
5	RPMs - Scheduled Rev. Svc.	197.5	189.5	749.3	741.4	738.6	738.0	737.7
6	ASMs - Scheduled Rev. Svc.	233.3	223.7	896.7	887.1	888.1	888.6	888.5
7	Overall RTMs (All Svc.)	27.2	26.4	104.5	103.7	103.5	103.3	103.2
8	Overall ATMs (All Svc.)	43.1	42.2	167.5	166.7	167.2	167.5	167.6
	<u>YIELD &amp; UNIT COST &amp; PROFITS: (Cents)</u>							
9	Operating Revenue per RTM	174.1	176.5	172.6	173.2	172.9	172.8	173.3
10	Operating Expense per RTM	160.5	164.2	164.8	165.8	165.6	165.3	165.4
11	Operating Profit (Loss) per RTM	13.6	12.3	7.7	7.3	7.4	7.5	7.8
12	Operating Expense per ATM	101.3	102.5	102.9	103.2	102.5	101.9	101.8
13	Passenger Revenue per RPM	14.58	14.98	14.41	14.51	14.47	14.49	14.54
	<u>FINANCIAL RATIOS:</u>							
14	Operating Revenues to Total Investment	*	*	2.57	2.57	2.64	2.63	0.34
15	Times Interest Earned	*	*	2.29	2.00	1.65	1.77	1.69
16	Current Assets to Current Liabilities	*	*	0.75	0.77	0.77	0.79	0.78
17	No. of Days Cash Coverage of Cash Exp.	*	*	62.3	52.3	53.3	55.2	60.6
	<u>FINANCIAL PERCENTAGES:</u>							
18	Operating Profit (Loss) to Operating Revenue	7.8	6.9	4.5	4.2	4.3	4.3	4.5
19	Net Income to Stockholders Equity	*	*	16.43	11.90	6.22	5.27	1.31
20	Corporate Return on Investment	*	*	9.1	7.9	6.5	6.4	0.8
21	Debt to Total Investment	*	*	70.0	72.8	71.4	66.6	71.3
	<u>LOAD FACTOR: (%)</u>							
22	Passenger Load Factor (Sch. Svc.)	84.6	84.7	83.6	83.6	83.2	83.1	83.0
23	Ton Load Factor (All Svc.)	63.1	62.4	62.4	62.2	61.9	61.7	61.6
	<u>Employment &amp; Productivity:</u>							
24	Employment, Total Weighted Avg CY	488,545	481,383	487,542	485,750	484,076	482,330	479,647
25	Overall RTM's per Employee (000)	54.8	54.7	211.2	213.5	213.7	214.1	215.1
	<u>CHANGE OVER COMPARABLE PERIOD 12 MONTHS EARLIER</u>							
26	Operating Revenues (%)	1.7	2.0	0.9	1.0	2.0	3.7	6.9
27	Operating Expenses (%)	0.8	0.0	1.0	0.8	1.6	3.5	7.3
28	Operating Profit (Loss) (in Millions \$)	469.0	906.8	-15.8	422.0	888.4	652.1	5.4
29	Net Income (Loss) (in Millions \$)	958.1	138.0	2,382.7	1,562.6	-321.0	-986.2	-1,698.9
30	RPMs (Sch. Svc.) (%)	4.2	-1.5	1.6	0.1	0.3	0.2	0.7
31	ASMs (Sch. Svc.) (%)	4.3	-2.6	0.9	-0.8	-0.6	-0.6	-0.1
32	Operating Revenues per RTM (%)	-1.3	3.2	-0.4	0.8	1.7	3.6	6.6
33	Operating Expense per RTM (%)	-2.3	1.2	-0.3	0.6	1.2	3.4	6.9
34	Passenger Revenue per RPM (Sch. Svc.)(%)	-2.7	4.7	-0.9	1.0	1.5	3.4	6.1

# QUARTERLY FINANCIAL & TRAFFIC REVIEW

## DOMESTIC OPERATIONS

### Domestic All Majors

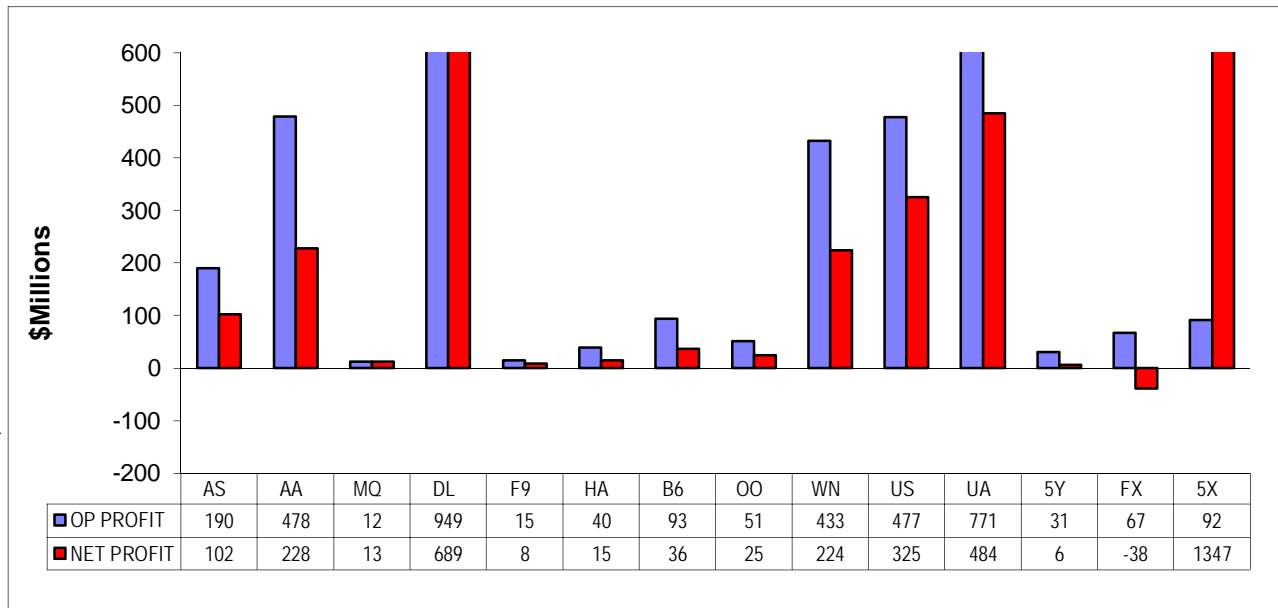
ITEMS		QUARTER ENDED		12 MONTHS ENDED				
		2013/06	2012/06	2013/06	2013/03	2012/12	2012/09	2012/06
	<u>FINANCIAL RESULTS: (\$Millions)</u>							
1	Operating Revenues	32,810.8	32,342.7	124,801.0	124,332.9	124,000.6	123,511.6	123,812.9
2	Operating Expenses	29,388.3	29,351.4	117,179.7	117,142.9	116,831.9	116,653.7	116,424.5
3	Operating Profit (Loss)	3,422.6	2,991.3	7,621.3	7,190.0	7,168.7	6,857.9	7,388.4
4	Net Income (Loss)	2,052.5	1,286.7	3,219.4	2,453.6	1,881.4	1,665.5	1,820.5
	<u>TRAFFIC: (Billions)</u>							
5	RTMs - Scheduled Svc.	132.4	126.3	505.3	499.2	497.2	497.3	497.3
6	ATMs - Scheduled Svc.	155.2	147.7	600.9	593.4	592.9	593.2	592.7
7	Overall RTMs (All Svc.)	16.1	15.5	62.1	61.5	61.3	61.2	61.2
8	Overall ATMs (All Svc.)	24.7	23.9	96.9	96.0	95.9	96.1	96.3
	<u>YIELD &amp; UNIT COST &amp; PROFITS: (Cents)</u>							
9	Operating Revenue per RTM	203.7	208.8	200.9	202.1	202.3	201.7	202.4
10	Operating Expense per RTM	182.5	189.5	188.6	190.4	190.7	190.5	190.4
11	Operating Profit (Loss) per RTM	21.2	19.3	12.3	11.7	11.7	11.2	12.1
12	Operating Expense per ATM	118.8	122.7	121.0	122.0	121.8	121.4	121.0
13	Passenger Revenue per RPM	14.55	15.09	14.25	14.38	14.33	14.36	14.46
	<u>FINANCIAL RATIOS:</u>							
14	Operating Revenues to Total Investment	*	*	**	**	**	**	**
15	Times Interest Earned	*	*	**	**	**	**	**
16	Current Assets to Current Liabilities	*	*	**	**	**	**	**
17	No. of Days Cash Coverage of Cash Exp.	*	*	**	**	**	**	**
	<u>FINANCIAL PERCENTAGES:</u>							
18	Operating Profit (Loss) to Operating Revenue	10.4	9.2	6.1	5.8	5.8	5.6	6.0
19	Net Income to Stockholders Equity	*	*	**	**	**	**	**
20	Corporate Return on Investment	*	*	10.5	9.2	8.4	8.0	0.8
21	Debt to Total Investment	*	*	**	**	**	**	**
	<u>LOAD FACTOR: (%)</u>							
22	Passenger Load Factor (Sch. Svc.)	70.0	71.3	70.0	72.8	71.4	66.6	71.3
23	Ton Load Factor (All Svc.)	85.3	85.5	84.1	84.1	83.9	83.8	83.9
	<u>Employment &amp; Productivity:</u>							
24	Employment, Total Weighted Avg CY	*	*	**	**	**	**	**
25	Overall RTM's per Employee (000)	*	*	**	**	**	**	**
		<b>CHANGE OVER COMPARABLE PERIOD 12 MONTHS EARLIER</b>						
26	Operating Revenues (%)	1.4	2.0	0.8	0.9	2.2	4.1	7.5
27	Operating Expenses (%)	0.1	-0.4	0.6	0.5	1.3	3.4	6.6
28	Operating Profit (Loss) (in Millions \$)	431.3	766.4	232.9	568.1	1,210.0	1,039.8	1,422.0
29	Net Income (Loss)(in Millions \$)	765.8	122.5	1,398.9	755.6	191.8	-59.4	-162.3
30	RPMs (Sch. Svc.) (%)	4.8	-2.9	1.6	-0.4	-0.3	-0.2	0.3
31	ASMs (Sch. Svc.) (%)	5.0	-3.7	1.4	-0.8	-0.8	-0.9	-0.8
32	Operating Revenues per RTM (%)	-2.4	4.3	-0.8	0.9	1.9	3.7	6.9
33	Operating Expense per RTM (%)	-3.7	1.8	-0.9	0.5	1.0	3.0	6.0
34	Passenger Revenue per RPM (Sch. Svc.)(%)	-3.6	4.7	-1.5	0.7	0.8	2.7	5.5

**QUARTERLY FINANCIAL & TRAFFIC REVIEW**  
**INTERNATIONAL OPERATIONS**  
**Int'l All Majors**

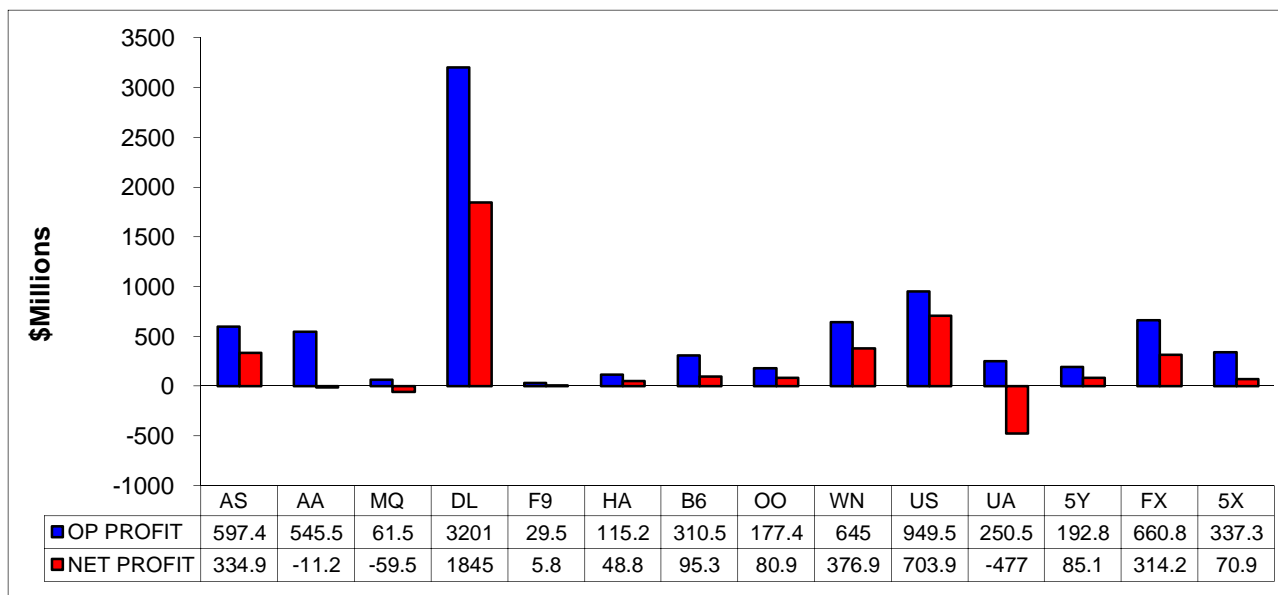
ITEMS		QUARTER ENDED		12 MONTHS ENDED				
		2013/06	2012/06	2013/06	2013/03	2012/12	2012/09	2012/06
	<u>FINANCIAL RESULTS: (\$Millions)</u>							
1	Operating Revenues	14,203.4	13,823.2	54,376.9	53,996.7	53,644.2	53,708.1	53,640.3
2	Operating Expenses	13,947.5	13,631.2	54,068.6	53,752.2	53,381.6	52,967.4	53,086.3
3	Operating Profit (Loss)	255.9	192.1	308.3	244.5	262.6	740.6	554.0
4	Net Income (Loss)	75.1	-141.3	138.0	-78.4	-706.0	-663.0	-866.1
	<u>TRAFFIC: (Bllions)</u>							
5	RTMs - Scheduled Svc.	65.1	63.2	244.1	242.2	241.4	240.7	239.5
6	ATMs - Scheduled Svc.	78.2	75.9	295.9	293.6	295.3	295.5	294.8
7	Overall RTMs (All Svc.)	10.3	10.1	39.3	39.2	39.3	39.2	39.2
8	Overall ATMs (All Svc.)	16.9	16.9	65.2	65.2	65.9	66.1	66.1
	<u>YIELD &amp; UNIT COST &amp; PROFITS: (Cents)</u>							
9	Operating Revenue per RTM	138.4	136.3	138.4	137.8	136.7	136.9	137.0
10	Operating Expense per RTM	135.9	134.4	137.6	137.2	136.0	135.0	135.6
11	Operating Profit (Loss) per RTM	2.5	1.9	0.8	0.6	0.7	1.9	1.4
12	Operating Expense per ATM	82.6	80.7	83.0	82.5	81.1	80.1	80.3
13	Passenger Revenue per RPM	14.65	14.77	14.75	14.79	14.77	14.77	14.73
	<u>FINANCIAL RATIOS:</u>							
14	Operating Revenues to Total Investment	*	*	**	**	**	**	**
15	Times Interest Earned	*	*	**	**	**	**	**
16	Current Assets to Current Liabilities	*	*	**	**	**	**	**
17	No. of Days Cash Coverage of Cash Exp.	*	*	**	**	**	**	**
	<u>FINANCIAL PERCENTAGES:</u>							
18	Operating Profit (Loss) to Operating Revenue	1.8	1.4	0.6	0.5	0.5	1.4	1.0
19	Net Income to Stockholders Equity	*	*	**	**	**	**	**
20	Corporate Return on Investment	*	*	5.5	4.4	1.3	1.7	27.2
21	Debt to Total Investment	*	*	**	**	**	**	**
	<u>LOAD FACTOR: (%)</u>							
22	Passenger Load Factor (Sch. Svc.)	83.3	83.2	82.5	82.5	81.8	81.5	81.3
23	Ton Load Factor (All Svc.)	60.8	60.1	60.3	60.1	59.6	59.4	59.2
	<u>Employment &amp; Productivity:</u>							
24	Employment, Total Weighted Avg CY	*	*	**	**	**	**	**
25	Overall RTM's per Employee (000)	*	*	**	**	**	**	**
	<u>CHANGE OVER COMPARABLE PERIOD 12 MONTHS EARLIER</u>							
26	Operating Revenues (%)	2.8	1.3	1.4	0.9	1.3	2.5	5.3
27	Operating Expenses (%)	2.3	0.4	1.9	1.2	2.0	3.4	8.4
28	Operating Profit (Loss) (in Millions \$)	63.9	125.2	-245.7	-185.2	-371.8	-413.4	-1,421.0
29	Net Income (Loss)(in Millions \$)	216.3	9.2	1,004.0	797.0	-523.6	-929.2	-1,531.2
30	RTMs (All Svc.) (%)	3.0	1.1	1.9	1.1	1.1	0.7	1.0
31	ATMs (All Svc.) (%)	2.9	-1.0	0.4	-0.9	-0.4	-0.1	0.6
32	Operating Revenues per RTM (%)	1.6	1.4	1.0	0.9	1.2	2.8	5.3
33	Operating Expense per RTM (%)	1.1	0.5	1.5	1.3	1.9	3.6	8.5
34	Passenger Revenue per RPM (Sch. Svc.)(%)	-0.9	5.0	0.2	1.7	3.2	4.9	7.5

# COMPARISONS AMONG MAJOR GROUP AIRLINES

**Chart 1.**  
**Operating and Net Profit (Loss)**  
**For the Quarter Ended June 2013**

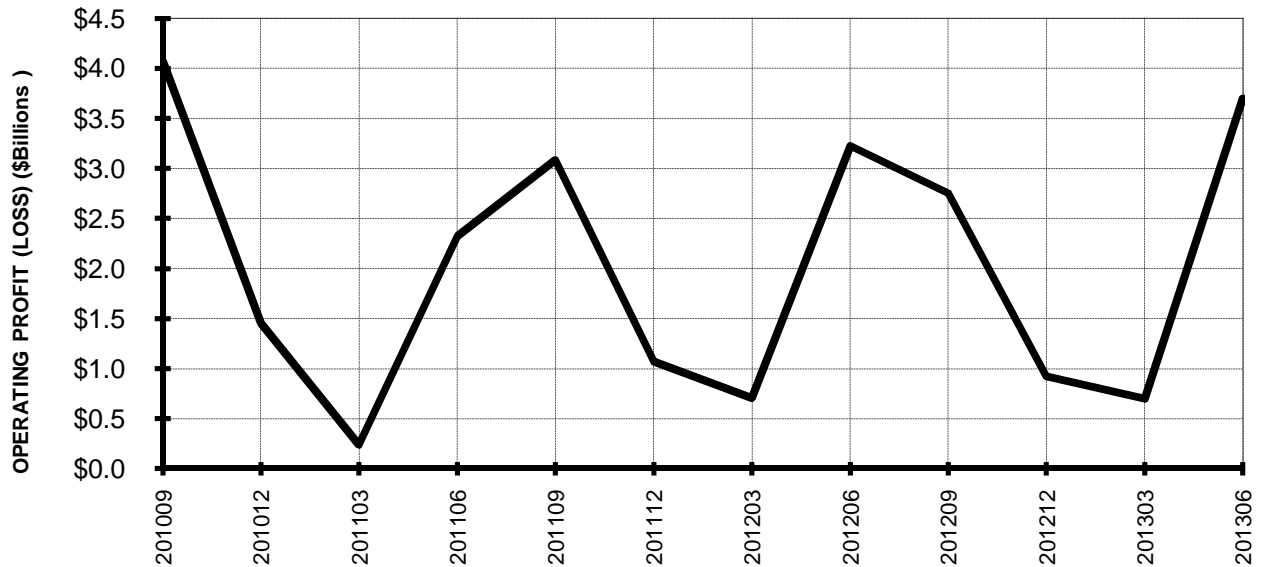


**Chart 2**  
**Operating and Net Profit (Loss)**  
**For the 12 Months Ended June 2013**

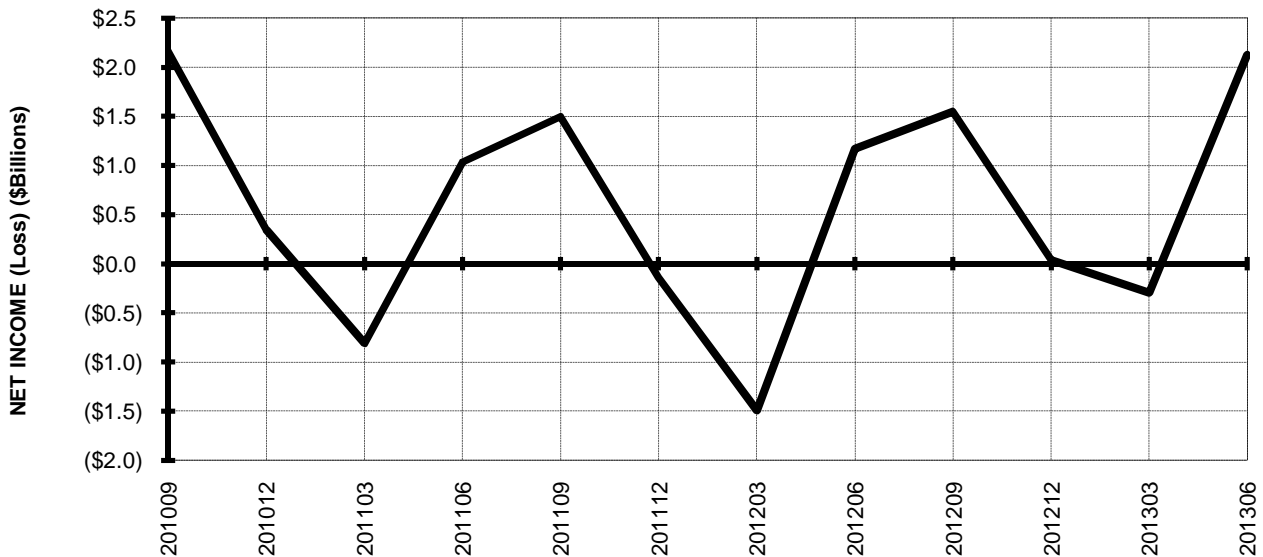


## TOTAL ALL MAJORS (SYSTEM) BY QUARTER

**Chart 3.  
OPERATING PROFIT (LOSS) (\$BILLIONS)**



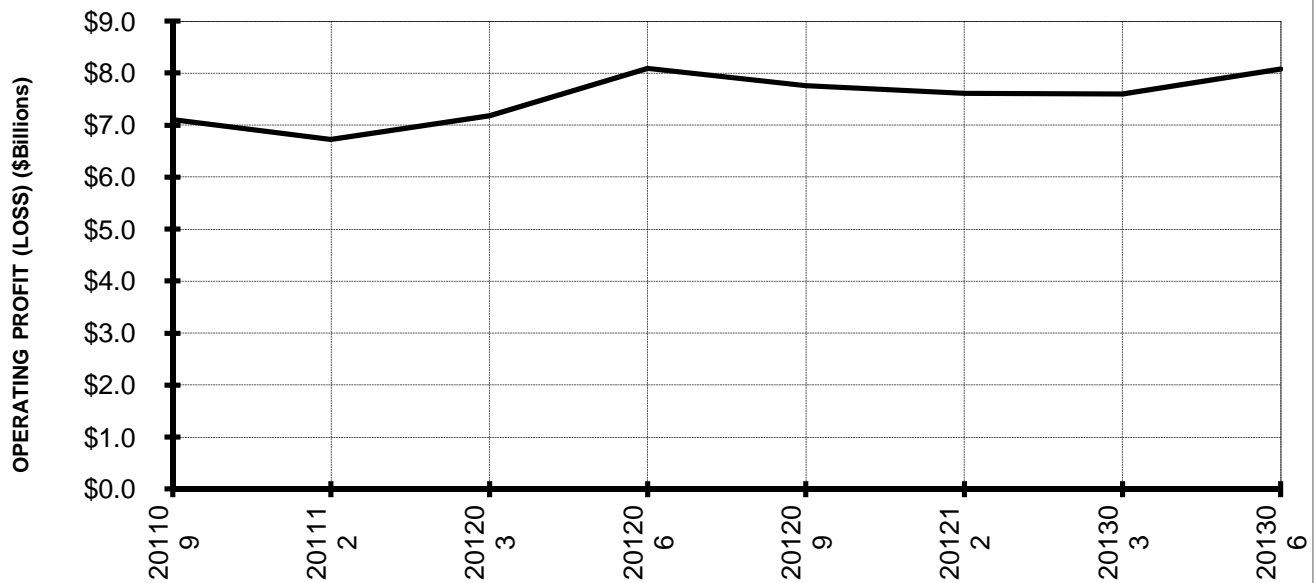
**Chart 4.  
NET INCOME (LOSS) (\$BILLIONS)**



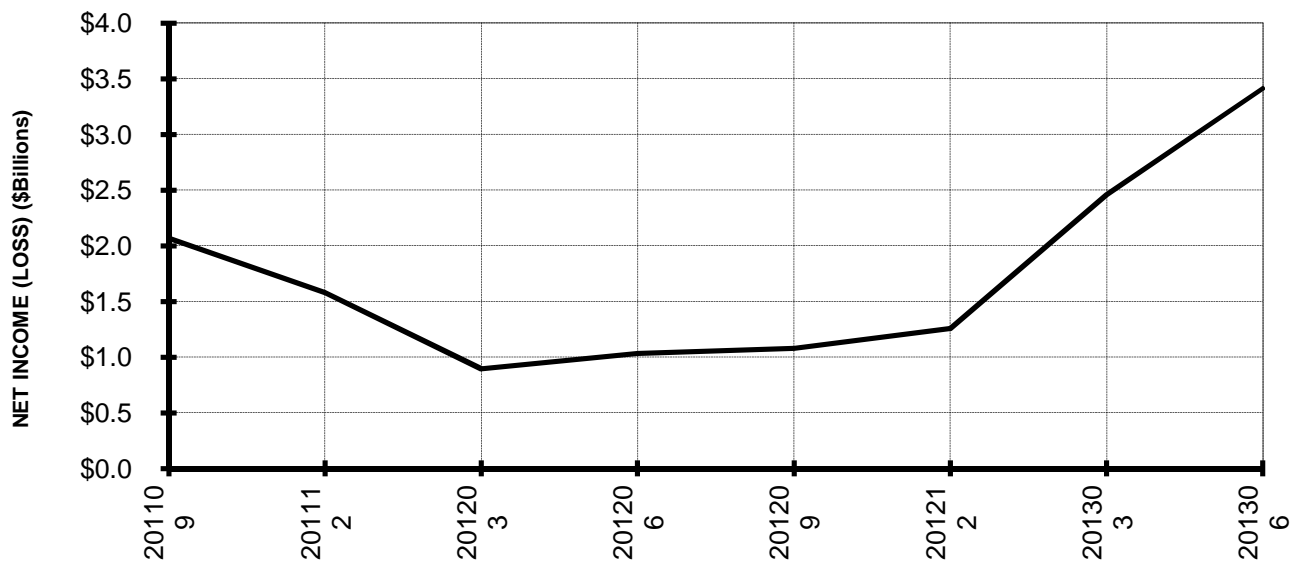


## TOTAL ALL MAJORS (SYSTEM) BY 12-MONTH ENDING PERIODS

**Chart 5.**  
**OPERATING PROFIT (LOSS) (\$BILLIONS)**

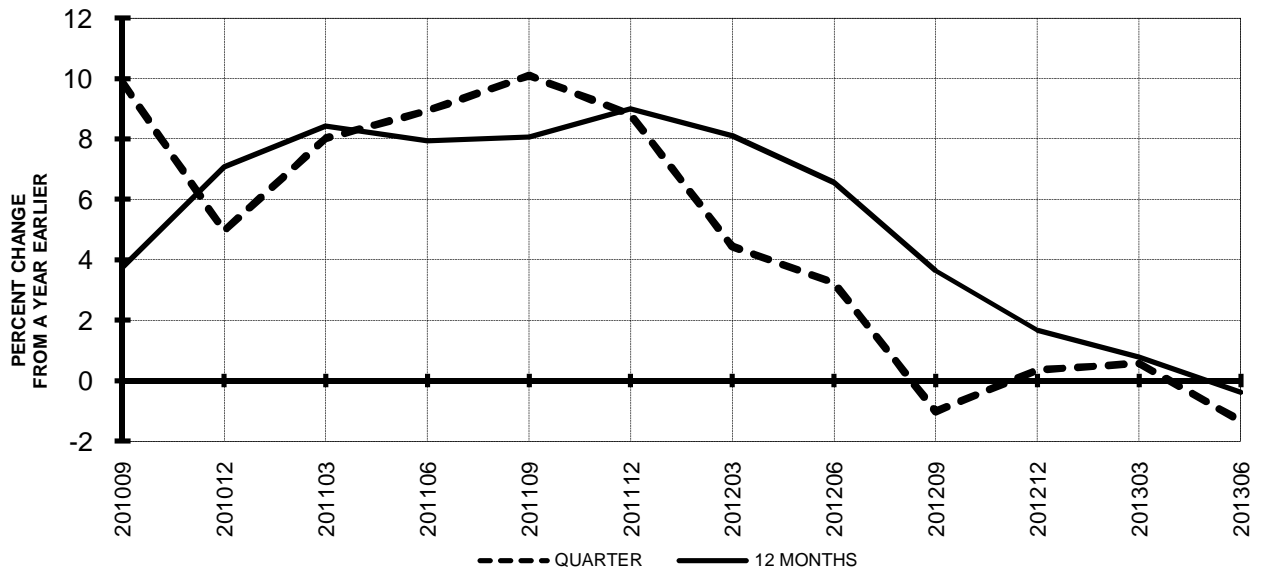


**Chart 6.**  
**NET INCOME (LOSS) (\$BILLIONS)**

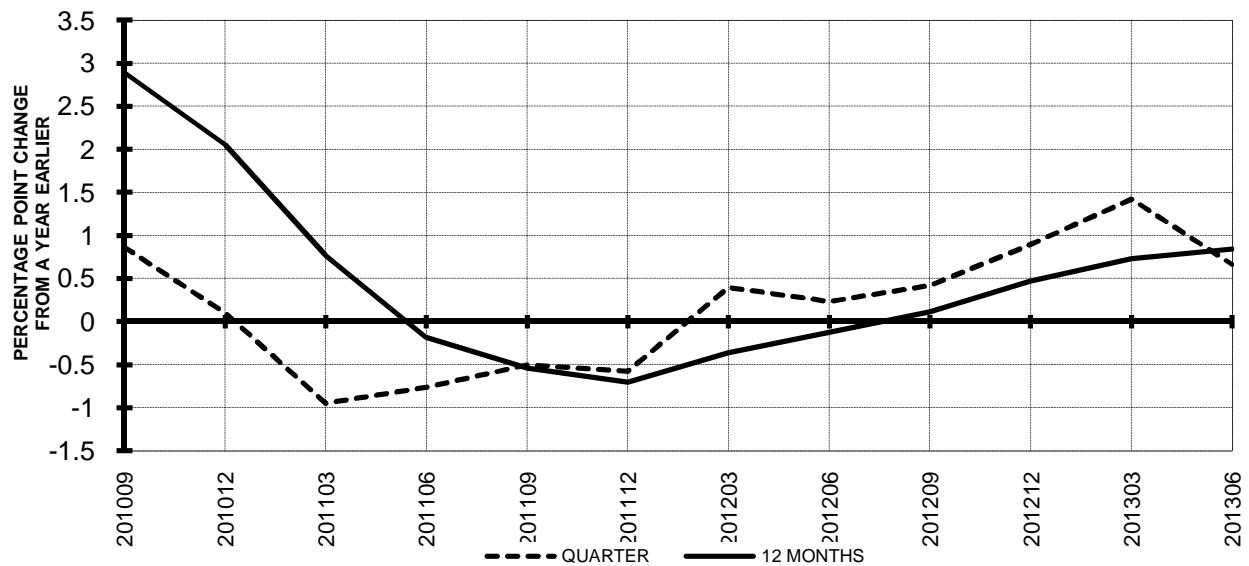


## TOTAL ALL MAJORS (SYSTEM) QUARTERLY AND 12-MONTH BASIS

**Chart 7.**  
**OPERATING REVENUE PER REVENUE TON-MILE**  
**PERCENT CHANGE FROM SAME PERIOD A YEAR EARLIER**

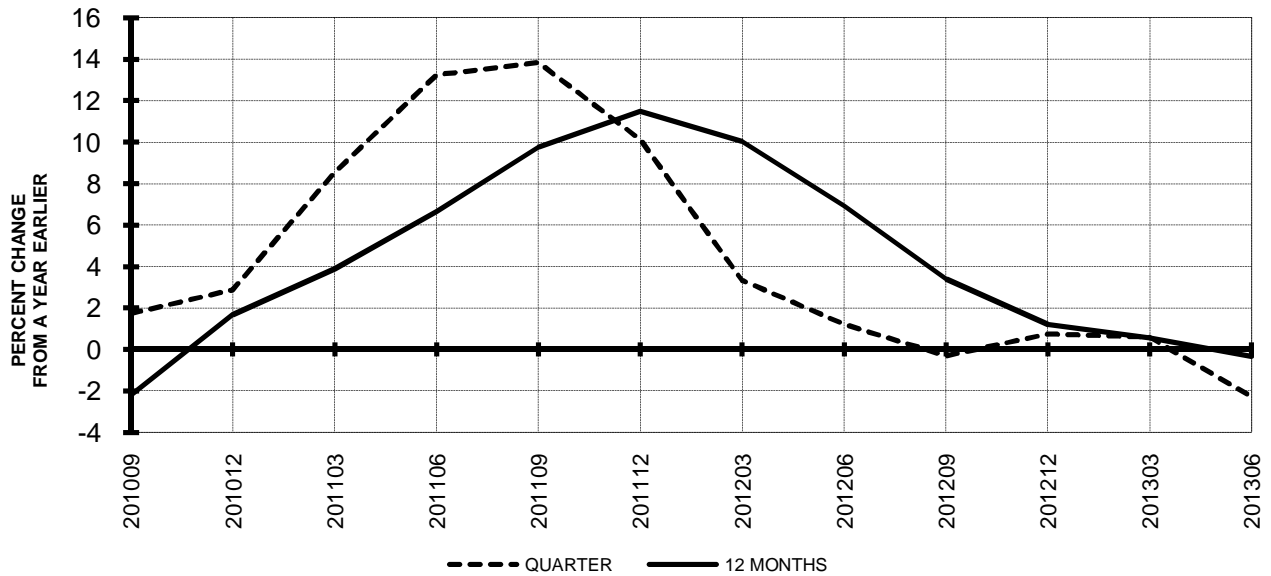


**Chart 8.**  
**TON LOAD FACTOR PERCENTAGE POINT CHANGE**  
**FROM SAME PERIOD A YEAR EARLIER**

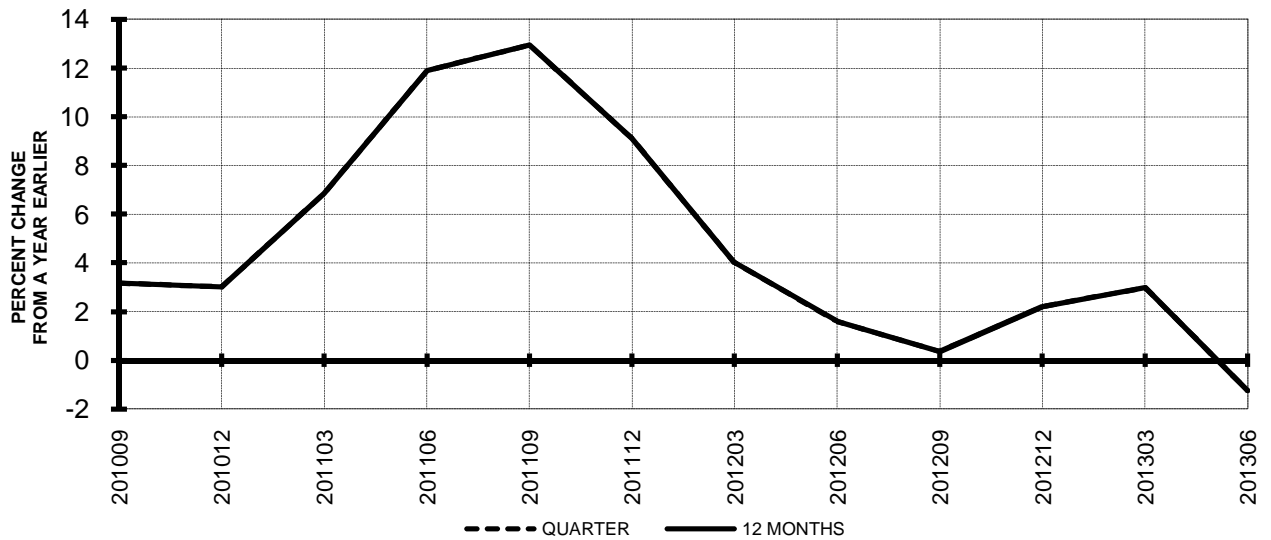


## TOTAL ALL MAJORS (SYSTEM) QUARTERLY AND 12-MONTH BASIS

**Chart 9.**  
**OPERATING EXPENSE PER REVENUE TON-MILE**  
**PERCENT CHANGE FROM SAME PERIOD A YEAR EARLIER**



**Chart 10.**  
**OPERATING EXPENSE PER AVAILABLE TON-MILE**  
**PERCENT CHANGE FROM SAME PERIOD A YEAR EARLIER**



# QUARTERLY FINANCIAL & TRAFFIC REVIEW

## SYSTEM OPERATIONS

### System Passenger Majors

ITEMS		QUARTER ENDED		12 MONTHS ENDED				
		2013/06	2012/06	2013/06	2013/03	2012/12	2012/09	2012/06
	<u>FINANCIAL RESULTS: (\$Millions)</u>							
1	Operating Revenues	38,947.8	38,718.7	146,949.1	146,720.0	146,072.5	145,973.9	146,218.4
2	Operating Expenses	35,439.9	36,367.5	140,066.3	140,993.8	140,542.3	140,323.8	140,422.9
3	Operating Profit (Loss)	3,507.8	2,351.1	6,882.9	5,726.2	5,530.1	5,650.1	5,795.5
4	Net Income (Loss)	2,147.8	717.7	2,943.8	1,513.7	250.5	40.6	-264.9
	<u>TRAFFIC: (Billions)</u>							
5	RPMs - Scheduled Svc.	197.5	189.5	749.3	741.4	738.6	738.0	737.7
6	ASMs - Scheduled Svc.	233.3	223.7	896.7	887.1	888.1	888.6	888.5
7	Overall RTMs (All Svc.)	21.6	20.9	82.3	81.5	81.4	81.3	81.3
8	Overall ATMs (All Svc.)	33.5	32.7	129.2	128.4	129.1	129.7	130.1
	<u>YIELD &amp; UNIT COST &amp; PROFITS: (Cents)</u>							
9	Operating Revenue per RTM	180.4	185.6	178.6	180.0	179.5	179.5	179.8
10	Operating Expense per RTM	164.1	174.4	170.3	172.9	172.7	172.5	172.7
11	Operating Profit (Loss) per RTM	16.2	11.3	8.4	7.0	6.8	6.9	7.1
12	Operating Expense per ATM	105.8	111.1	108.4	109.8	108.9	108.2	108.0
13	Passenger Revenue per RPM	14.58	14.98	14.41	14.51	14.47	14.49	14.54
	<u>FINANCIAL RATIOS:</u>							
14	Operating Revenues to Total Investment	*	*	2.80	2.82	2.85	2.84	0.29
15	Times Interest Earned	*	*	2.10	1.54	1.14	1.24	1.08
16	Current Assets to Current Liabilities	*	*	0.78	0.72	0.75	0.77	0.76
17	No. of Days Cash Coverage of Cash Exp.	*	*	73.8	61.1	61.8	64.5	69.9
	<u>FINANCIAL PERCENTAGES:</u>							
18	Operating Profit (Loss) to Operating Revenue	9.0	6.1	4.7	3.9	3.8	3.9	4.0
19	Net Income to Stockholders Equity	*	*	40.03	20.74	3.56	0.54	-0.97
20	Corporate Return on Investment	*	*	11.0	8.6	6.5	6.2	0.6
21	Debt to Total Investment	*	*	85.6	88.5	87.7	80.8	87.7
	<u>PASSENGER LOAD FACTOR: (Sch. Svc. %)</u>							
22	Actual	84.6	84.7	83.6	83.6	83.2	83.1	83.0
23	Breakeven	79.2	71.8	82.7	83.8	83.5	83.3	75.6
	<u>Employment &amp; Productivity:</u>							
24	Employment, Total Weighted Avg CY	343,535	347,630	343,444	344,466	345,478	346,320	346,409
25	Overall RTM's per Employee (000)	61.7	60.0	234.9	236.7	235.5	234.9	234.7
	<u>CHANGE OVER COMPARABLE PERIOD 12 MONTHS EARLIER</u>							
26	Operating Revenues (%)	0.6	3.6	0.5	1.3	2.3	4.1	7.3
27	Operating Expenses (%)	-2.6	2.5	-0.3	1.0	1.9	4.1	8.1
28	Operating Profit (Loss) (in Millions \$)	1,156.7	470.3	1,087.4	401.0	615.6	239.9	-625.9
29	Net Income (Loss)(in Millions \$)	1,430.2	-79.3	3,208.8	1,699.3	-299.2	-1,022.7	-2,188.5
30	RPMs (Sch. Svc.) (%)	4.2	-1.5	1.6	0.1	0.3	0.2	0.7
31	ASMs (Sch. Svc.) (%)	4.3	-2.6	0.9	-0.8	-0.6	-0.6	-0.1
32	Operating Revenues per RTM (%)	-2.8	5.2	-0.7	1.4	2.2	4.2	7.1
33	Operating Expense per RTM (%)	-5.9	4.1	-1.4	1.2	1.8	4.2	7.9
34	Passenger Revenue per RPM (Sch. Svc.)(%)	-2.7	4.7	-0.9	1.0	1.5	3.4	6.1

# QUARTERLY FINANCIAL & TRAFFIC REVIEW

## DOMESTIC OPERATIONS

### Domestic Passenger Majors

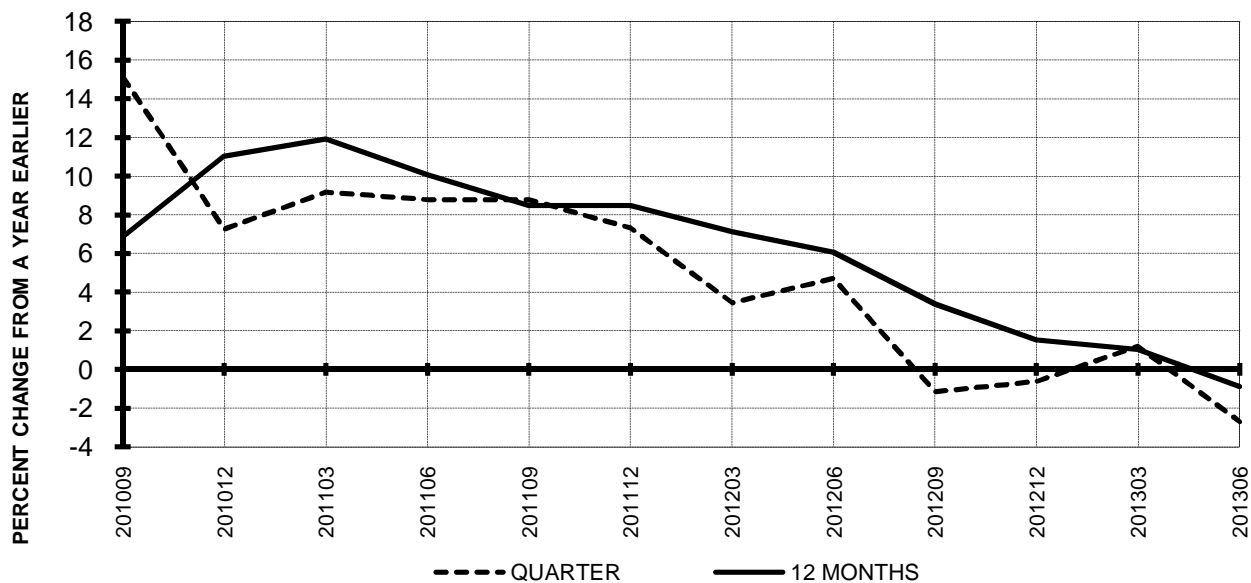
ITEMS		QUARTER ENDED		12 MONTHS ENDED				
		2013/06	2012/06	2013/06	2013/03	2012/12	2012/09	2012/06
	<u>FINANCIAL RESULTS: (\$Millions)</u>							
1	Operating Revenues	26,981.5	27,036.3	101,625.4	101,680.2	101,301.8	101,318.0	101,754.1
2	Operating Expenses	24,629.4	25,233.3	98,311.3	98,915.1	98,598.5	98,493.5	98,226.1
3	Operating Profit (Loss)	2,352.1	1,803.0	3,314.2	2,765.1	2,703.2	2,824.5	3,528.0
4	Net Income (Loss)	1,376.7	606.1	488.5	-282.0	-870.6	-818.5	-587.8
	<u>TRAFFIC: (Billions)</u>							
5	RPMs - Scheduled Svc.	132.4	126.3	505.3	499.2	497.2	497.3	497.3
6	ASMs - Scheduled Svc.	155.2	147.7	600.9	593.4	592.9	593.2	592.7
7	Overall RTMs (All Svc.)	13.6	13.0	52.0	51.4	51.2	51.2	51.2
8	Overall ATMs (All Svc.)	20.3	19.6	79.0	78.2	78.2	78.6	78.9
	<u>YIELD &amp; UNIT COST &amp; PROFITS: (Cents)</u>							
9	Operating Revenue per RTM	198.5	207.9	195.5	197.9	197.9	197.9	198.8
10	Operating Expense per RTM	181.2	194.0	189.2	192.5	192.6	192.4	192.0
11	Operating Profit (Loss) per RTM	17.3	13.9	6.4	5.4	5.3	5.5	6.9
12	Operating Expense per ATM	121.2	128.8	124.5	126.4	126.0	125.3	124.6
13	Passenger Revenue per RPM	14.55	15.09	14.25	14.38	14.33	14.36	14.46
	<u>FINANCIAL RATIOS:</u>							
14	Operating Revenues to Total Investment	*	*	**	**	**	**	**
15	Times Interest Earned	*	*	**	**	**	**	**
16	Current Assets to Current Liabilities	*	*	**	**	**	**	**
17	No. of Days Cash Coverage of Cash Exp.	*	*	**	**	**	**	**
	<u>FINANCIAL PERCENTAGES:</u>							
18	Operating Profit (Loss) to Operating Revenue	8.7	6.7	3.3	2.7	2.7	2.8	3.5
19	Net Income to Stockholders Equity	*	*	**	**	**	**	**
20	Corporate Return on Investment	*	*	6.1	4.5	3.2	3.5	0.3
21	Debt to Total Investment	*	*	**	**	**	**	**
	<u>PASSENGER LOAD FACTOR: (Sch. Svc. %)</u>							
22	Actual	85.3	85.5	84.1	84.1	83.9	83.8	83.9
23	Breakeven	80.7	71.8	84.9	86.4	87.0	87.2	75.6
	<u>Employment &amp; Productivity:</u>							
24	Employment, Total Weighted Avg CY	*	*	**	**	**	**	**
25	Overall RTM's per Employee (000)	*	*	**	**	**	**	**
	<u>CHANGE OVER COMPARABLE PERIOD 12 MONTHS EARLIER</u>							
26	Operating Revenues (%)	-0.2	3.1	-0.1	0.7	1.6	3.6	6.7
27	Operating Expenses (%)	-2.4	1.8	0.1	1.2	1.9	4.2	7.5
28	Operating Profit (Loss) (in Millions \$)	549.1	371.7	-213.8	-391.3	-164.5	-444.6	-439.4
29	Net Income (Loss)(in Millions \$)	770.6	-68.7	1,076.3	237.1	-650.0	-968.3	-1,440.2
30	RPMs (Sch. Svc.) (%)	4.8	-2.9	1.6	-0.4	-0.3	-0.2	0.3
31	ASMs (Sch. Svc.) (%)	5.0	-3.7	1.4	-0.8	-0.8	-0.9	-0.8
32	Operating Revenues per RTM (%)	-4.5	6.0	-1.7	1.0	1.9	3.8	6.5
33	Operating Expense per RTM (%)	-6.6	4.7	-1.5	1.5	2.1	4.4	7.3
34	Passenger Revenue per RPM (Sch. Svc.)(%)	-3.6	4.7	-1.5	0.7	0.8	2.7	5.5

**QUARTERLY FINANCIAL & TRAFFIC REVIEW**  
**INTERNATIONAL OPERATIONS**  
**Int'l Passenger Majors**

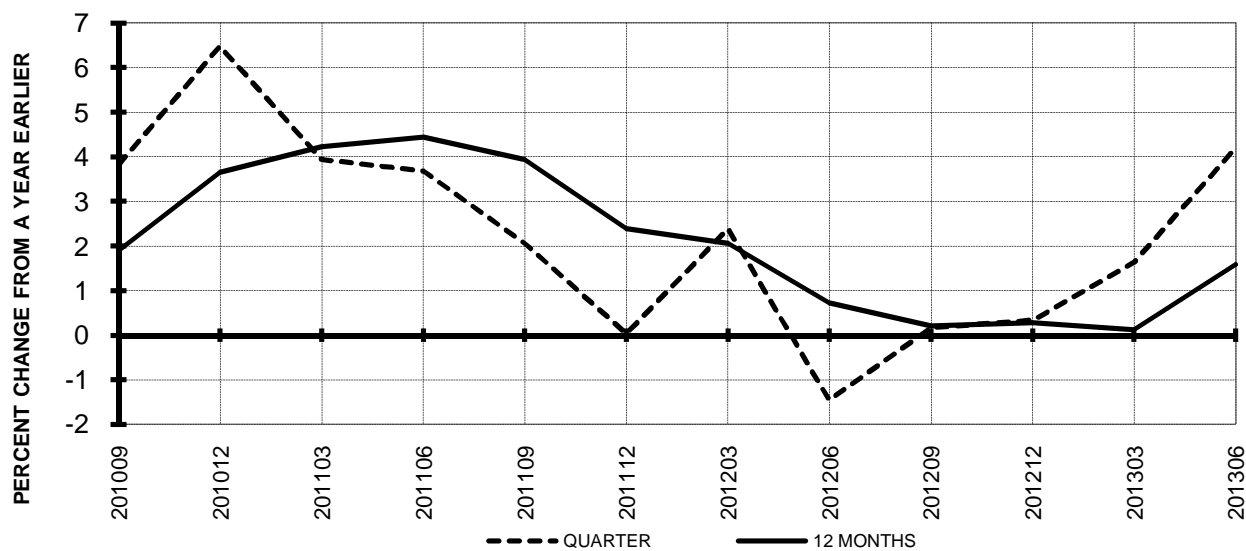
ITEMS		QUARTER ENDED		12 MONTHS ENDED				
		2013/06	2012/06	2013/06	2013/03	2012/12	2012/09	2012/06
	<u>FINANCIAL RESULTS: (\$Millions)</u>							
1	Operating Revenues	11,966.2	11,682.3	45,323.7	45,039.8	44,770.7	44,655.9	44,375.5
2	Operating Expenses	10,810.5	11,134.2	41,755.0	42,078.7	41,943.8	41,830.3	42,108.7
3	Operating Profit (Loss)	1,155.7	548.1	3,568.7	2,961.1	2,826.9	2,825.7	2,266.8
4	Net Income (Loss)	771.1	111.5	2,455.3	1,795.7	1,121.0	859.1	323.3
	<u>TRAFFIC: (Bllions)</u>							
5	RPMs - Scheduled Svc.	65.1	63.2	244.1	242.2	241.4	240.7	239.5
6	ASMs - Scheduled Svc.	78.2	75.9	295.9	293.6	295.3	295.5	294.8
7	Overall RTMs (All Svc.)	8.0	7.9	30.3	30.2	30.2	30.2	30.0
8	Overall ATMs (All Svc.)	13.2	13.1	50.2	50.2	50.8	51.1	51.1
	<u>YIELD &amp; UNIT COST &amp; PROFITS: (Cents)</u>							
9	Operating Revenue per RTM	149.6	148.8	149.6	149.4	148.4	148.1	147.7
10	Operating Expense per RTM	135.1	141.8	137.8	139.6	139.0	138.7	140.2
11	Operating Profit (Loss) per RTM	14.4	7.0	11.8	9.8	9.4	9.4	7.5
12	Operating Expense per ATM	82.0	84.8	83.1	83.9	82.5	81.8	82.4
13	Passenger Revenue per RPM	14.65	14.77	14.75	14.79	14.77	14.77	14.73
	<u>FINANCIAL RATIOS:</u>							
14	Operating Revenues to Total Investment	*	*	**	**	**	**	**
15	Times Interest Earned	*	*	**	**	**	**	**
16	Current Assets to Current Liabilities	*	*	**	**	**	**	**
17	No. of Days Cash Coverage of Cash Exp.	*	*	**	**	**	**	**
	<u>FINANCIAL PERCENTAGES:</u>							
18	Operating Profit (Loss) to Operating Revenue	9.7	4.7	7.9	6.6	6.3	6.3	5.1
19	Net Income to Stockholders Equity	*	*	**	**	**	**	**
20	Corporate Return on Investment	*	*	26.9	21.8	17.2	15.2	3.2
21	Debt to Total Investment	*	*	**	**	**	**	**
	<u>PASSENGER LOAD FACTOR: (Sch. Svc. %)</u>							
22	Actual	83.3	83.2	82.5	82.5	81.8	81.5	81.3
23	Breakeven	76.0	71.8	78.1	78.3	76.5	75.3	75.6
	<u>Employment &amp; Productivity:</u>							
24	Employment, Total Weighted Avg CY	*	*	**	**	**	**	**
25	Overall RTM's per Employee (000)	*	*	**	**	**	**	**
	<u>CHANGE OVER COMPARABLE PERIOD 12 MONTHS EARLIER</u>							
26	Operating Revenues (%)	2.4	4.9	2.1	2.6	3.6	5.2	8.4
27	Operating Expenses (%)	-2.9	4.1	-0.8	0.8	1.9	3.8	9.4
28	Operating Profit (Loss) (in Millions \$)	607.6	98.8	1,301.9	792.3	779.8	684.6	-187.0
29	Net Income (Loss)(in Millions \$)	659.6	-10.3	2,132.1	1,462.2	351.2	-53.9	-747.8
30	RPMs (Sch. Svc.) (%)	3.0	1.1	1.9	1.1	1.1	0.7	1.0
31	ASMs (Sch. Svc.) (%)	2.9	-1.0	0.4	-0.9	-0.4	-0.1	0.6
32	Operating Revenues per RTM (%)	0.6	4.6	1.3	2.3	3.3	5.5	8.7
33	Operating Expense per RTM (%)	-4.7	3.9	-1.7	0.6	1.6	4.0	9.8
34	Passenger Revenue per RPM (Sch. Svc.)(%)	-0.9	5.0	0.2	1.7	3.2	4.9	7.5

# **TOTAL PASSENGER MAJORS (SYSTEM) QUARTERLY AND 12-MONTH BASIS (SCH. SVC.)**

**Chart 11  
PASSENGER REVENUES PER REVENUE PASSENGER-MILE  
PERCENT CHANGE FROM SAME PERIOD A YEAR EARLIER**

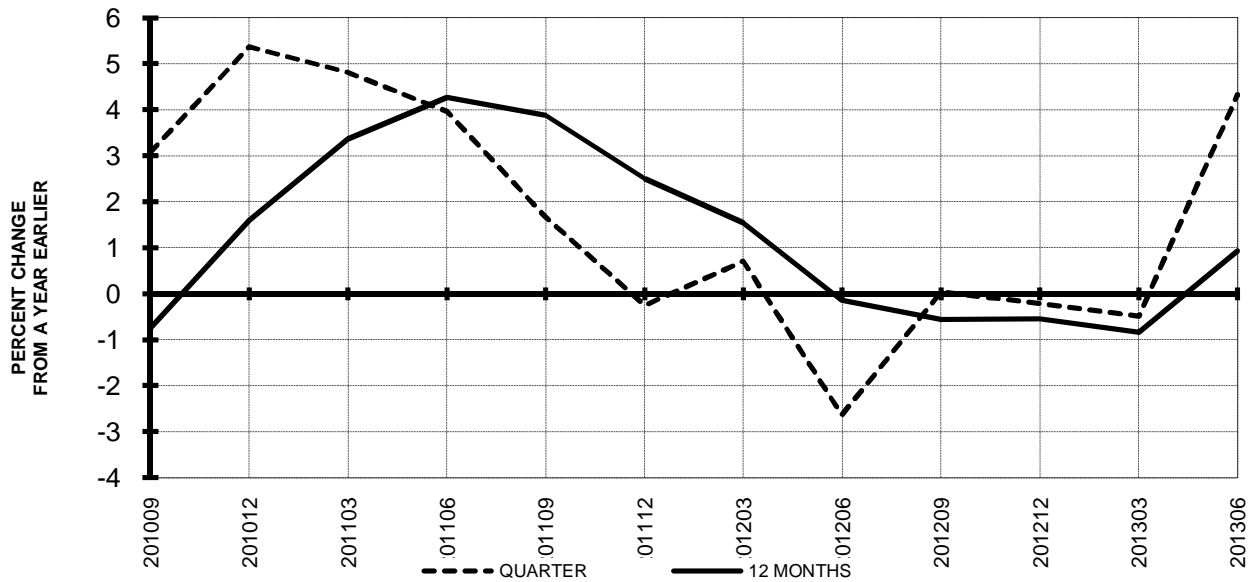


**Chart 12  
REVENUE PASSENGER-MILES  
PERCENT CHANGE FROM SAME PERIOD A EARLIER**

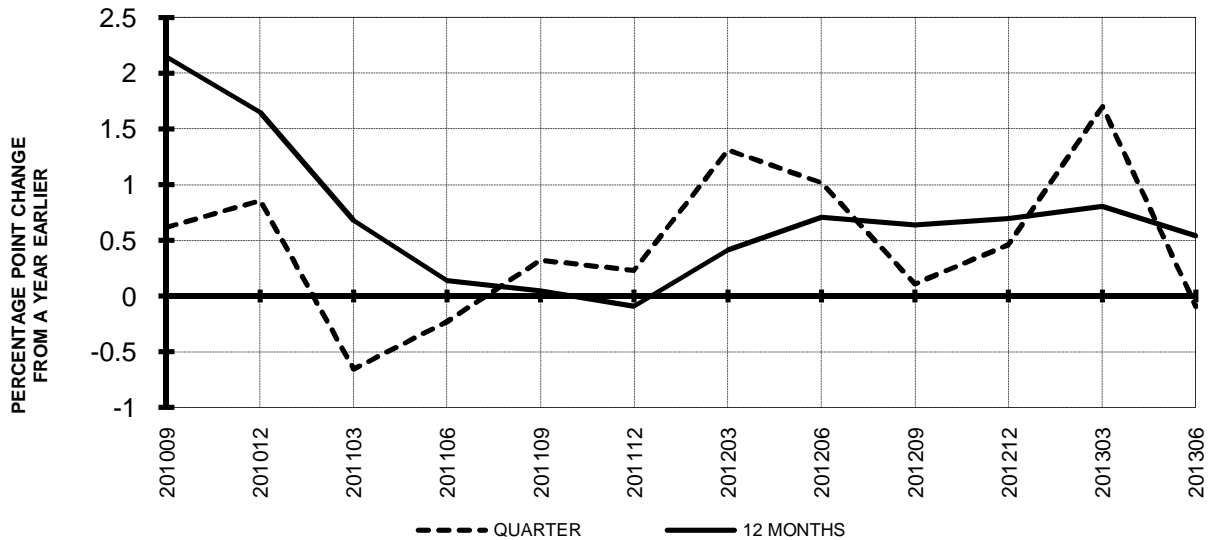


**TOTAL PASSENGER MAJORS (SYSTEM)  
QUARTERLY AND 12-MONTH BASIS (SCH. SVC.)**

**Chart 13  
AVAILABLE SEAT-MILES  
PERCENT CHANGE FROM SAME PERIOD A YEAR EARLIER**



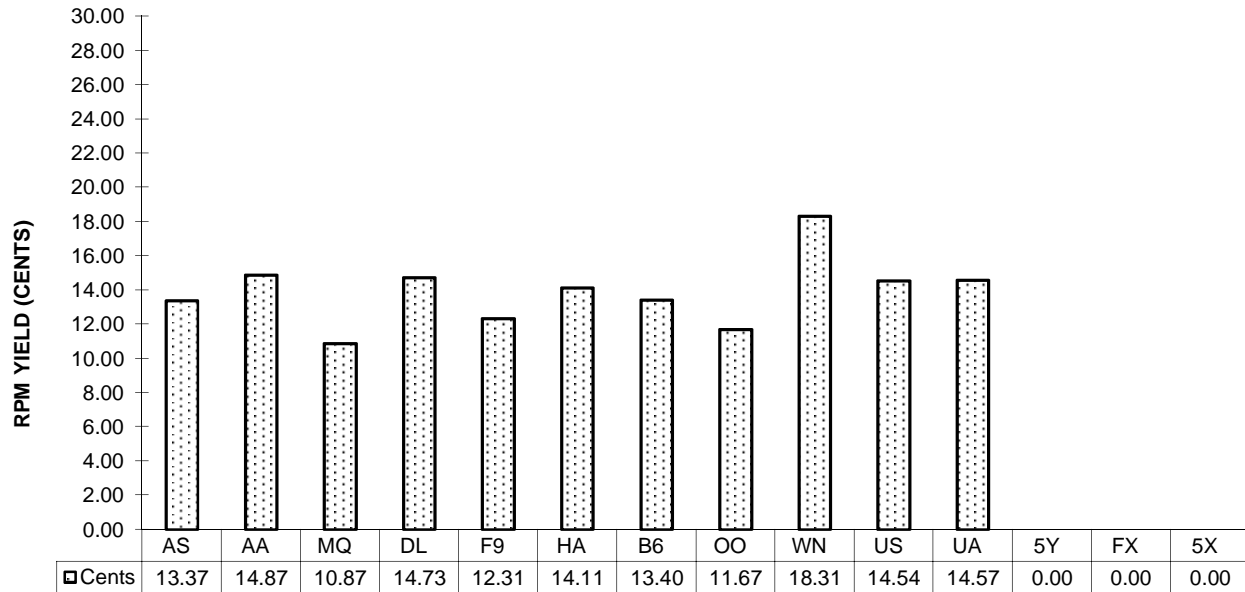
**Chart 14  
PASSENGER LOAD FACTOR PERCENTAGE  
POINT CHANGE FROM SAME PERIOD A YEAR EARLIER**



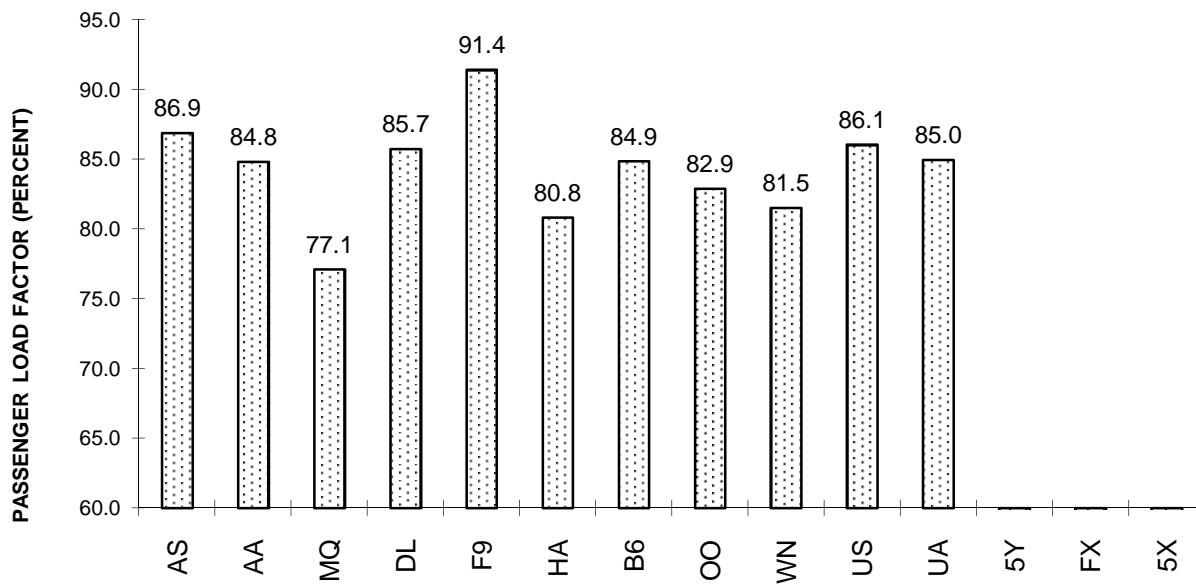


# **TOTAL PASSENGER MAJORS (SYSTEM) SECOND QUARTER 2013**

**Chart 15  
PASSENGER (RPM) YIELD**



**Chart 16  
PASSENGER LOAD FACTOR**



**QUARTERLY FINANCIAL & TRAFFIC REVIEW**  
**SYSTEM OPERATIONS**  
**Alaska Airlines**

ITEMS		QUARTER ENDED		12 MONTHS ENDED				
		2013/06	2012/06	2013/06	2013/03	2012/12	2012/09	2012/06
	<u>FINANCIAL RESULTS: (\$Millions)</u>							
1	Operating Revenues	1,255.0	1,211.5	4,787.8	4,744.3	4,650.0	4,561.6	4,487.4
2	Operating Expenses	1,065.5	1,020.5	4,190.4	4,145.4	4,088.6	4,016.2	3,959.1
3	Operating Profit (Loss)	189.5	191.0	597.4	598.9	561.4	545.5	528.3
4	Net Income (Loss)	102.2	66.0	334.9	298.7	301.6	323.1	237.7
	<u>TRAFFIC: (Billions)</u>							
5	RPMs - Scheduled Svc.	6.7	6.2	25.4	24.9	24.4	23.9	23.5
6	ASMs - Scheduled Svc.	7.7	7.1	29.4	28.8	28.1	27.6	27.1
7	Overall RTMs (All Svc.)	0.7	0.6	2.6	2.6	2.5	2.5	2.4
8	Overall ATMs (All Svc.)	1.1	1.0	4.0	3.9	3.8	3.7	3.7
	<u>YIELD &amp; UNIT COST &amp; PROFITS: (Cents)</u>							
9	Operating Revenue per RTM	181.1	188.6	183.2	185.1	185.4	185.6	186.0
10	Operating Expense per RTM	153.8	158.9	160.3	161.7	163.0	163.4	164.1
11	Operating Profit (Loss) per RTM	27.3	29.7	22.9	23.4	22.4	22.2	21.9
12	Operating Expense per ATM	101.6	0.1	105.5	106.8	107.8	107.9	0.1
13	Passenger Revenue per RPM	13.37	13.87	13.38	13.50	13.49	13.49	13.46
	<u>FINANCIAL RATIOS:</u>							
14	Operating Revenues to Total Investment	*	*	2.20	2.21	2.18	2.12	1.38
15	Times Interest Earned	*	*	20.74	16.75	16.57	17.09	9.53
16	Current Assets to Current Liabilities	*	*	1.29	1.28	1.27	1.30	1.15
17	No. of Days Cash Coverage of Cash Exp.	*	*	131.4	117.7	118.0	113.7	115.4
	<u>FINANCIAL PERCENTAGES:</u>							
18	Operating Profit (Loss) to Operating Revenue	15.1	15.8	12.5	12.6	12.1	12.0	11.8
19	Net Income to Stockholders Equity	*	*	22.76	21.45	22.75	25.12	4.80
20	Corporate Return on Investment	*	*	16.7	15.4	15.6	16.5	8.7
21	Debt to Total Investment	*	*	27.8	29.9	32.9	33.5	38.3
	<u>PASSENGER LOAD FACTOR: (Sch. Svc. %)</u>							
22	Actual	86.9	87.4	86.5	86.6	86.7	86.6	86.5
23	Breakeven	73.7	74.7	76.7	77.0	78.0	78.2	78.5
	<u>Employment &amp; Productivity:</u>							
24	Employment, Total Weighted Avg CY	9,515	9,141	9,319	9,225	9,147	9,076	9,014
25	Overall RTM's per Employee (000)	72.8	70.3	280.5	277.8	274.2	270.8	267.6
	<u>CHANGE OVER COMPARABLE PERIOD 12 MONTHS EARLIER</u>							
26	Operating Revenues (%)	3.6	9.3	6.7	8.2	7.9	10.5	15.4
27	Operating Expenses (%)	4.4	4.6	5.8	5.9	6.5	10.4	15.5
28	Operating Profit (Loss) (in Millions \$)	-1.5	58.7	69.1	129.3	90.4	56.6	67.8
29	Net Income (Loss)(in Millions \$)	36.2	24.4	97.2	85.4	45.2	63.0	-63.2
30	RPMs (Sch. Svc.) (%)	7.9	9.4	8.4	8.8	8.1	7.6	7.9
31	ASMs (Sch. Svc.) (%)	8.5	6.4	8.3	7.8	6.3	5.4	5.2
32	Operating Revenues per RTM (%)	-4.0	0.0	-1.5	-0.5	-0.1	2.8	7.2
33	Operating Expense per RTM (%)	-3.2	-4.4	-2.3	-2.6	-1.4	2.7	7.3
34	Passenger Revenue per RPM (Sch. Svc.)(%)	-3.6	1.3	-0.6	0.8	1.0	2.0	3.5

**QUARTERLY FINANCIAL & TRAFFIC REVIEW**  
**SYSTEM OPERATIONS**  
**American Airlines**

ITEMS		QUARTER ENDED		12 MONTHS ENDED				
		2013/06	2012/06	2013/06	2013/03	2012/12	2012/09	2012/06
<u>FINANCIAL RESULTS: (\$Millions)</u>								
1	Operating Revenues	6,436.8	6,447.2	24,868.3	24,878.6	24,825.1	24,851.3	24,800.5
2	Operating Expenses	5,958.8	6,325.5	24,322.7	24,689.4	24,783.9	25,601.5	25,567.7
3	Operating Profit (Loss)	478.0	121.7	545.5	189.2	41.2	-750.2	-767.3
4	Net Income (Loss)	227.8	-263.7	-11.2	-502.7	-1,926.1	-3,294.0	-3,190.2
<u>TRAFFIC: (Billions)</u>								
5	RPMs - Scheduled Svc.	32.8	32.6	126.8	126.5	126.4	126.4	127.0
6	ASMs - Scheduled Svc.	38.7	38.3	152.5	152.0	152.6	152.4	153.4
7	Overall RTMs (All Svc.)	3.8	3.7	14.4	14.4	14.4	14.4	14.5
8	Overall ATMs (All Svc.)	6.2	6.0	24.0	23.8	23.7	23.6	23.8
<u>YIELD &amp; UNIT COST &amp; PROFITS: (Cents)</u>								
9	Operating Revenue per RTM	171.4	173.5	172.3	172.8	172.3	172.3	171.0
10	Operating Expense per RTM	158.6	170.2	168.5	171.5	172.0	177.5	176.3
11	Operating Profit (Loss) per RTM	12.7	3.3	3.8	1.3	0.3	-5.2	-5.3
12	Operating Expense per ATM	96.0	0.1	101.2	103.8	104.4	108.4	0.1
13	Passenger Revenue per RPM	14.87	14.84	14.85	14.84	14.82	14.81	14.67
<u>FINANCIAL RATIOS:</u>								
14	Operating Revenues to Total Investment	*	*	999.90	999.90	999.90	999.90	999.90
15	Times Interest Earned	*	*	-0.03	-0.84	-3.15	-4.23	-3.96
16	Current Assets to Current Liabilities	*	*	0.72	0.59	0.59	0.59	0.63
17	No. of Days Cash Coverage of Cash Exp.	*	*	109.7	77.8	72.2	74.8	85.0
<u>FINANCIAL PERCENTAGES:</u>								
18	Operating Profit (Loss) to Operating Revenue	7.4	1.9	2.2	0.8	0.2	-3.0	-3.1
19	Net Income to Stockholders Equity	*	*	&	0.00	0.00	0.00	0.00
20	Corporate Return on Investment	*	*	0.0	0.0	0.0	0.0	999.9
21	Debt to Total Investment	*	*	-2,496.3	-431.3	-616.5	-620.8	-331.2
<u>PASSENGER LOAD FACTOR: (Sch. Svc. %)</u>								
22	Actual	84.8	85.1	83.2	83.2	82.8	83.0	82.8
23	Breakeven	82.3	90.0	86.5	88.5	88.7	92.9	92.8
<u>Employment &amp; Productivity:</u>								
24	Employment, Total Weighted Avg CY	59,029	64,950	60,840	62,321	63,892	65,162	65,810
25	Overall RTM's per Employee (000)	63.6	57.2	237.3	231.0	225.6	221.4	220.4
		<b>CHANGE OVER COMPARABLE PERIOD 12 MONTHS EARLIER</b>						
26	Operating Revenues (%)	-0.2	5.5	0.3	1.7	3.6	5.4	7.6
27	Operating Expenses (%)	-5.8	1.6	-4.9	-3.1	-1.4	7.0	10.6
28	Operating Profit (Loss) (in Millions \$)	356.3	238.2	1,312.8	1,194.7	1,211.3	-400.7	-698.8
29	Net Income (Loss)(in Millions \$)	491.5	20.6	3,179.0	2,708.1	39.0	-2,323.7	-2,501.7
30	RPMs (Sch. Svc.) (%)	0.8	-0.6	-0.2	-0.6	-0.1	-0.3	0.4
31	ASMs (Sch. Svc.) (%)	1.1	-2.4	-0.6	-1.5	-1.1	-1.7	-1.0
32	Operating Revenues per RTM (%)	-1.2	6.2	0.8	2.6	3.8	6.1	7.7
33	Operating Expense per RTM (%)	-6.8	2.3	-4.4	-2.2	-1.2	7.7	10.7
34	Passenger Revenue per RPM (Sch. Svc.)(%)	0.2	6.8	1.3	2.9	4.5	6.2	7.1

**QUARTERLY FINANCIAL & TRAFFIC REVIEW**  
**SYSTEM OPERATIONS**  
**American Eagle Airlines**

ITEMS		QUARTER ENDED		12 MONTHS ENDED				
		2013/06	2012/06	2013/06	2013/03	2012/12	2012/09	2012/06
	<u>FINANCIAL RESULTS: (\$Millions)</u>							
1	Operating Revenues	289.5	274.2	1,142.3	1,127.1	1,107.0	1,265.2	1,594.8
2	Operating Expenses	277.4	249.4	1,080.8	1,052.8	1,024.6	1,184.1	1,508.7
3	Operating Profit (Loss)	12.1	24.8	61.5	74.2	82.3	81.1	86.1
4	Net Income (Loss)	12.5	30.0	-59.5	-41.9	-32.3	60.5	45.8
	<u>TRAFFIC: (Billions)</u>							
5	RPMs - Scheduled Svc.	2.4	2.5	9.4	9.6	9.6	9.6	9.6
6	ASMs - Scheduled Svc.	3.1	3.2	12.5	12.6	12.7	12.8	12.7
7	Overall RTMs (All Svc.)	0.2	0.3	0.9	1.0	1.0	1.0	1.0
8	Overall ATMs (All Svc.)	0.4	0.4	1.5	1.6	1.6	1.6	1.6
	<u>YIELD &amp; UNIT COST &amp; PROFITS: (Cents)</u>							
9	Operating Revenue per RTM	121.0	108.0	121.4	118.0	115.0	131.5	166.9
10	Operating Expense per RTM	116.0	98.2	114.9	110.2	106.5	123.0	157.9
11	Operating Profit (Loss) per RTM	5.1	9.8	6.5	7.8	8.6	8.4	9.0
12	Operating Expense per ATM	72.3	0.1	70.0	67.5	65.1	75.1	0.1
13	Passenger Revenue per RPM	10.87	10.39	11.15	11.02	10.92	12.68	16.23
	<u>FINANCIAL RATIOS:</u>							
14	Operating Revenues to Total Investment	*	*	9.14	8.62	8.11	2.72	0.94
15	Times Interest Earned	*	*	999.90	999.90	999.90	28.65	2.21
16	Current Assets to Current Liabilities	*	*	2.11	2.11	2.09	2.39	2.37
17	No. of Days Cash Coverage of Cash Exp.	*	*	0.5	0.7	0.9	0.8	0.5
	<u>FINANCIAL PERCENTAGES:</u>							
18	Operating Profit (Loss) to Operating Revenue	4.2	9.0	5.4	6.6	7.4	6.4	5.4
19	Net Income to Stockholders Equity	*	*	-47.75	-32.16	-23.68	31.49	5.85
20	Corporate Return on Investment	*	*	-49.3	-33.8	-25.3	13.6	5.7
21	Debt to Total Investment	*	*	0.6	0.8	0.8	0.1	0.1
	<u>PASSENGER LOAD FACTOR: (Sch. Svc. %)</u>							
22	Actual	77.1	78.3	75.3	75.7	75.6	75.4	75.3
23	Breakeven	73.1	70.2	70.5	69.8	69.1	70.0	70.9
	<u>Employment &amp; Productivity:</u>							
24	Employment, Total Weighted Avg CY	11,165	9,808	10,763	10,424	10,090	9,975	9,969
25	Overall RTM's per Employee (000)	21.4	25.9	87.4	91.7	95.4	96.5	95.8
	<u>CHANGE OVER COMPARABLE PERIOD 12 MONTHS EARLIER</u>							
26	Operating Revenues (%)	5.6	-54.5	-28.4	-41.4	-49.7	-44.5	-26.8
27	Operating Expenses (%)	11.2	-56.1	-28.4	-42.4	-51.0	-44.8	-25.4
28	Operating Profit (Loss) (in Millions \$)	-12.7	-10.4	-24.6	-22.3	-26.6	-53.5	-69.5
29	Net Income (Loss)(in Millions \$)	-17.5	24.3	-105.3	-63.4	-45.8	21.5	-9.6
30	RPMs (Sch. Svc.) (%)	-5.8	6.8	-1.6	1.7	5.6	7.9	10.5
31	ASMs (Sch. Svc.) (%)	-4.3	5.1	-1.6	0.8	4.0	6.5	8.7
32	Operating Revenues per RTM (%)	12.1	-57.4	-27.3	-42.4	-52.4	-48.6	-33.8
33	Operating Expense per RTM (%)	18.0	-58.9	-27.2	-43.4	-53.6	-48.8	-32.5
34	Passenger Revenue per RPM (Sch. Svc.)(%)	4.6	-58.2	-31.3	-44.9	-53.8	-49.3	-34.2

# QUARTERLY FINANCIAL & TRAFFIC REVIEW

## SYSTEM OPERATIONS

### Delta Air Lines

ITEMS		QUARTER ENDED		12 MONTHS ENDED				
		2013/06	2012/06	2013/06	2013/03	2012/12	2012/09	2012/06
	<u>FINANCIAL RESULTS: (\$Millions)</u>							
1	Operating Revenues	9,716.0	9,752.3	36,855.8	36,892.2	36,813.4	36,574.8	36,440.1
2	Operating Expenses	8,767.0	9,384.5	33,654.9	34,272.4	34,129.5	33,539.9	33,999.9
3	Operating Profit (Loss)	949.0	367.8	3,201.0	2,619.8	2,684.0	3,034.9	2,440.2
4	Net Income (Loss)	688.7	-120.4	1,845.0	1,035.9	1,180.1	1,676.1	1,068.5
	<u>TRAFFIC: (Billions)</u>							
5	RPMs - Scheduled Svc.	44.9	44.2	170.0	169.2	168.8	168.0	168.1
6	ASMs - Scheduled Svc.	52.4	51.4	199.7	198.8	199.2	199.3	199.7
7	Overall RTMs (All Svc.)	5.1	5.0	19.4	19.4	19.3	19.3	19.3
8	Overall ATMs (All Svc.)	7.9	7.8	30.1	30.1	30.3	30.5	30.6
	<u>YIELD &amp; UNIT COST &amp; PROFITS: (Cents)</u>							
9	Operating Revenue per RTM	191.5	193.7	189.9	190.5	190.3	189.7	189.1
10	Operating Expense per RTM	172.8	186.4	173.4	177.0	176.4	174.0	176.5
11	Operating Profit (Loss) per RTM	18.7	7.3	16.5	13.5	13.9	15.7	12.7
12	Operating Expense per ATM	111.7	0.1	111.9	114.0	112.6	110.1	0.1
13	Passenger Revenue per RPM	14.73	14.61	14.60	14.57	14.47	14.41	14.32
	<u>FINANCIAL RATIOS:</u>							
14	Operating Revenues to Total Investment	*	*	2.54	2.47	2.38	2.21	1.36
15	Times Interest Earned	*	*	3.00	2.07	2.15	2.60	1.98
16	Current Assets to Current Liabilities	*	*	0.62	0.63	0.64	0.64	0.58
17	No. of Days Cash Coverage of Cash Exp.	*	*	43.5	39.2	37.1	36.1	36.7
	<u>FINANCIAL PERCENTAGES:</u>							
18	Operating Profit (Loss) to Operating Revenue	9.8	3.8	8.7	7.1	7.3	8.3	6.7
19	Net Income to Stockholders Equity	*	*	86.88	43.31	43.12	46.91	7.50
20	Corporate Return on Investment	*	*	19.1	13.5	14.3	16.4	8.1
21	Debt to Total Investment	*	*	85.2	89.9	89.5	77.2	86.2
	<u>PASSENGER LOAD FACTOR: (Sch. Svc. %)</u>							
22	Actual	85.7	85.8	85.1	85.1	84.7	84.3	84.2
23	Breakeven	78.1	87.2	77.6	79.9	79.4	77.6	79.7
	<u>Employment &amp; Productivity:</u>							
24	Employment, Total Weighted Avg CY	74,232	74,336	73,522	73,548	73,576	73,740	74,113
25	Overall RTM's per Employee (000)	68.3	67.7	263.9	263.3	262.9	261.4	260.0
	<u>CHANGE OVER COMPARABLE PERIOD 12 MONTHS EARLIER</u>							
26	Operating Revenues (%)	-0.4	6.3	1.1	2.9	4.5	5.6	7.9
27	Operating Expenses (%)	-6.6	9.9	-1.0	3.4	3.5	2.2	7.5
28	Operating Profit (Loss) (in Millions \$)	581.2	-266.2	760.8	-86.6	438.9	1,218.7	292.6
29	Net Income (Loss)(in Millions \$)	809.1	-356.3	776.5	-389.0	201.3	1,074.3	640.4
30	RPMs (Sch. Svc.) (%)	1.7	0.7	1.1	0.9	0.7	-0.6	-0.5
31	ASMs (Sch. Svc.) (%)	1.8	-0.8	0.0	-0.7	-1.4	-2.3	-2.2
32	Operating Revenues per RTM (%)	-1.1	5.5	0.4	2.2	3.8	6.0	8.3
33	Operating Expense per RTM (%)	-7.3	9.1	-1.7	2.6	2.8	2.6	7.9
34	Passenger Revenue per RPM (Sch. Svc.)(%)	0.8	4.3	2.0	2.9	3.7	5.5	7.4

# QUARTERLY FINANCIAL & TRAFFIC REVIEW

## SYSTEM OPERATIONS

### Frontier Airlines

ITEMS		QUARTER ENDED		12 MONTHS ENDED				
		2013/06	2012/06	2013/06	2013/03	2012/12	2012/09	2012/06
<u>FINANCIAL RESULTS: (\$Millions)</u>								
1	Operating Revenues	327.7	370.7	1,359.0	1,402.0	1,433.5	1,427.3	1,533.5
2	Operating Expenses	313.2	355.2	1,329.5	1,371.6	1,404.1	1,421.6	1,556.5
3	Operating Profit (Loss)	14.5	15.5	29.5	30.4	29.4	5.7	-23.0
4	Net Income (Loss)	8.1	8.5	5.8	6.3	4.7	0.8	-17.0
<u>TRAFFIC: (Billions)</u>								
5	RPMs - Scheduled Svc.	2.3	2.6	9.4	9.7	10.0	10.2	10.4
6	ASMs - Scheduled Svc.	2.5	2.8	10.4	10.7	11.2	11.4	11.7
7	Overall RTMs (All Svc.)	0.3	0.3	1.0	1.0	1.1	1.1	1.1
8	Overall ATMs (All Svc.)	0.3	0.3	1.3	1.3	1.3	1.3	1.3
<u>YIELD &amp; UNIT COST &amp; PROFITS: (Cents)</u>								
9	Operating Revenue per RTM	130.9	134.2	133.8	134.6	134.5	132.6	141.4
10	Operating Expense per RTM	125.1	128.6	130.9	131.7	131.7	132.0	143.5
11	Operating Profit (Loss) per RTM	5.8	5.6	2.9	2.9	2.8	0.5	-2.1
12	Operating Expense per ATM	101.6	0.1	104.9	106.2	106.3	107.4	0.1
13	Passenger Revenue per RPM	12.31	11.93	12.02	11.93	11.70	11.60	12.47
<u>FINANCIAL RATIOS:</u>								
14	Operating Revenues to Total Investment	*	*	4.38	4.81	5.20	5.57	3.80
15	Times Interest Earned	*	*	6.36	5.79	5.27	1.01	-3.74
16	Current Assets to Current Liabilities	*	*	0.34	0.33	0.41	0.32	0.31
17	No. of Days Cash Coverage of Cash Exp.	*	*	5.9	5.9	9.7	5.6	6.4
<u>FINANCIAL PERCENTAGES:</u>								
18	Operating Profit (Loss) to Operating Revenue	4.4	4.2	2.2	2.2	2.1	0.4	-1.5
19	Net Income to Stockholders Equity	*	*	3.56	4.52	3.96	0.81	-4.69
20	Corporate Return on Investment	*	*	3.4	4.0	3.7	2.6	-2.7
21	Debt to Total Investment	*	*	39.4	42.8	41.3	56.5	61.3
<u>PASSENGER LOAD FACTOR: (Sch. Svc. %)</u>								
22	Actual	91.4	90.8	90.5	90.3	89.4	89.1	88.7
23	Breakeven	88.7	85.7	89.7	88.9	86.9	89.7	84.9
<u>Employment &amp; Productivity:</u>								
24	Employment, Total Weighted Avg CY	3,690	4,256	3,890	4,031	4,193	4,385	4,603
25	Overall RTM's per Employee (000)	67.8	64.9	261.0	258.3	254.2	245.6	235.6
		<b>CHANGE OVER COMPARABLE PERIOD 12 MONTHS EARLIER</b>						
26	Operating Revenues (%)	-11.6	-18.4	-11.4	-13.3	-13.7	-16.4	-2.5
27	Operating Expenses (%)	-11.8	-27.6	-14.6	-18.9	-20.8	-21.7	-6.5
28	Operating Profit (Loss) (in Millions \$)	-1.0	51.6	52.5	105.0	140.9	112.3	68.5
29	Net Income (Loss)(in Millions \$)	-0.5	32.1	22.8	55.4	76.8	74.1	47.3
30	RPMs (Sch. Svc.) (%)	-10.4	-2.9	-9.8	-7.9	-3.1	2.6	8.1
31	ASMs (Sch. Svc.) (%)	-11.1	-5.6	-11.6	-10.2	-5.6	-1.1	3.5
32	Operating Revenues per RTM (%)	-2.4	-22.1	-5.4	-10.8	-16.0	-22.6	-13.0
33	Operating Expense per RTM (%)	-2.7	-30.9	-8.8	-16.6	-22.9	-27.4	-16.5
34	Passenger Revenue per RPM (Sch. Svc.)(%)	3.2	-22.3	-3.6	-10.5	-17.5	-23.6	-12.9

1/ For comparison purposes, all data has been retroactively adjusted to include Northwest.

# QUARTERLY FINANCIAL & TRAFFIC REVIEW

## SYSTEM OPERATIONS

### Hawaiian Airlines

ITEMS		QUARTER ENDED		12 MONTHS ENDED				
		2013/06	2012/06	2013/06	2013/03	2012/12	2012/09	2012/06
<u>FINANCIAL RESULTS: (\$Millions)</u>								
1	Operating Revenues	534.0	484.6	2,066.6	2,017.3	1,962.6	1,903.6	1,810.1
2	Operating Expenses	494.4	454.1	1,951.4	1,911.1	1,829.9	1,746.7	1,668.0
3	Operating Profit (Loss)	39.6	30.5	115.2	106.1	132.7	156.8	142.1
4	Net Income (Loss)	14.5	7.1	48.8	41.4	66.3	90.9	70.2
<u>TRAFFIC: (Billions)</u>								
5	RPMs - Scheduled Svc.	3.4	2.9	13.3	12.8	12.2	11.5	10.9
6	ASMs - Scheduled Svc.	4.2	3.5	16.2	15.5	14.7	13.8	12.9
7	Overall RTMs (All Svc.)	0.4	0.3	1.5	1.4	1.4	1.3	1.2
8	Overall ATMs (All Svc.)	0.7	0.6	2.8	2.7	2.5	2.4	2.2
<u>YIELD &amp; UNIT COST &amp; PROFITS: (Cents)</u>								
9	Operating Revenue per RTM	139.4	151.5	138.8	141.5	145.2	150.2	152.4
10	Operating Expense per RTM	129.0	141.9	131.1	134.1	135.4	137.8	140.4
11	Operating Profit (Loss) per RTM	10.3	9.5	7.7	7.4	9.8	12.4	12.0
12	Operating Expense per ATM	68.0	0.1	69.7	71.5	72.6	74.1	0.1
13	Passenger Revenue per RPM	14.11	14.98	14.01	14.20	14.48	14.88	15.04
<u>FINANCIAL RATIOS:</u>								
14	Operating Revenues to Total Investment	*	*	2.47	2.55	2.61	2.71	1.98
15	Times Interest Earned	*	*	3.78	3.27	5.01	7.02	6.92
16	Current Assets to Current Liabilities	*	*	0.70	0.70	0.72	0.89	0.83
17	No. of Days Cash Coverage of Cash Exp.	*	*	74.6	68.2	64.7	74.0	80.6
<u>FINANCIAL PERCENTAGES:</u>								
18	Operating Profit (Loss) to Operating Revenue	7.4	6.3	5.6	5.3	6.8	8.2	7.9
19	Net Income to Stockholders Equity	*	*	24.7	21.5	36.2	50.6	10.4
20	Corporate Return on Investment	*	*	9.02	8.54	12.11	16.18	9.73
21	Debt to Total Investment	*	*	79.3	74.9	74.4	74.0	79.2
<u>PASSENGER LOAD FACTOR: (Sch. Svc. %)</u>								
22	Actual	80.8	84.1	81.8	82.5	83.2	83.8	84.3
23	Breakeven	74.7	79.0	77.4	78.4	77.6	76.7	77.7
<u>Employment &amp; Productivity:</u>								
24	Employment, Total Weighted Avg CY	4,608	4,105	4,405	4,279	4,152	4,011	3,884
25	Overall RTM's per Employee (000)	83.2	77.9	338.0	333.1	325.5	316.0	305.9
		<b>CHANGE OVER COMPARABLE PERIOD 12 MONTHS EARLIER</b>						
26	Operating Revenues (%)	10.2	22.7	14.2	17.2	18.9	21.8	24.1
27	Operating Expenses (%)	8.9	-2.2	17.0	13.9	12.5	12.7	13.6
28	Operating Profit (Loss) (in Millions \$)	9.1	99.5	-26.9	63.6	107.9	144.7	151.1
29	Net Income (Loss)(in Millions \$)	7.4	54.1	-21.4	25.2	58.3	35.9	11.8
30	RPMs (Sch. Svc.) (%)	16.6	17.0	22.4	22.7	20.5	17.6	14.5
31	ASMs (Sch. Svc.) (%)	21.3	16.8	26.2	25.3	22.1	18.9	15.7
32	Operating Revenues per RTM (%)	-8.0	5.3	-8.9	-6.0	-2.3	3.5	8.4
33	Operating Expense per RTM (%)	-9.1	-16.0	-6.6	-8.7	-7.5	-4.3	-0.7
34	Passenger Revenue per RPM (Sch. Svc.)(%)	-5.8	6.0	-6.9	-4.3	-0.9	4.6	10.2

**QUARTERLY FINANCIAL & TRAFFIC REVIEW**  
**SYSTEM OPERATIONS**  
**JetBlue Airways**

ITEMS		QUARTER ENDED		12 MONTHS ENDED				
		2013/06	2012/06	2013/06	2013/03	2012/12	2012/09	2012/06
	<u>FINANCIAL RESULTS: (\$Millions)</u>							
1	Operating Revenues	1,334.4	1,277.3	5,134.6	5,077.5	4,982.0	4,935.0	4,824.3
2	Operating Expenses	1,241.2	1,157.4	4,824.1	4,740.3	4,622.3	4,536.8	4,430.7
3	Operating Profit (Loss)	93.3	119.9	310.5	337.2	359.7	398.2	393.6
4	Net Income (Loss)	36.4	52.5	95.3	111.5	127.3	150.0	140.0
	<u>TRAFFIC: (Billions)</u>							
5	RPMs - Scheduled Svc.	9.1	8.5	34.8	34.2	33.6	33.2	32.5
6	ASMs - Scheduled Svc.	10.7	10.0	41.5	40.7	40.1	39.6	38.8
7	Overall RTMs (All Svc.)	0.9	0.9	3.5	3.4	3.4	3.3	3.3
8	Overall ATMs (All Svc.)	1.4	1.3	5.2	5.1	5.0	5.0	4.9
	<u>YIELD &amp; UNIT COST &amp; PROFITS: (Cents)</u>							
9	Operating Revenue per RTM	145.3	149.5	146.6	147.7	147.6	147.7	147.6
10	Operating Expense per RTM	135.1	135.5	137.8	137.9	136.9	135.8	135.6
11	Operating Profit (Loss) per RTM	10.2	14.0	8.9	9.8	10.7	11.9	12.0
12	Operating Expense per ATM	92.0	0.1	92.6	92.7	91.8	91.1	0.1
13	Passenger Revenue per RPM	13.40	13.78	13.49	13.58	13.56	13.55	13.53
	<u>FINANCIAL RATIOS:</u>							
14	Operating Revenues to Total Investment	*	*	1.08	1.07	1.04	1.03	0.67
15	Times Interest Earned	*	*	2.00	2.13	2.24	2.45	2.34
16	Current Assets to Current Liabilities	*	*	0.62	0.66	0.68	0.97	1.03
17	No. of Days Cash Coverage of Cash Exp.	*	*	69.5	69.2	61.1	90.6	105.6
	<u>FINANCIAL PERCENTAGES:</u>							
18	Operating Profit (Loss) to Operating Revenue	7.0	9.4	6.0	6.6	7.2	8.1	8.2
19	Net Income to Stockholders Equity	*	*	5.04	5.97	6.93	8.33	1.97
20	Corporate Return on Investment	*	*	5.3	5.7	6.2	6.7	4.4
21	Debt to Total Investment	*	*	59.3	59.8	60.2	60.1	61.1
	<u>PASSENGER LOAD FACTOR: (Sch. Svc. %)</u>							
22	Actual	84.9	85.3	83.9	84.0	83.8	83.9	83.8
23	Breakeven	80.7	78.6	80.7	80.2	79.4	78.7	78.6
	<u>Employment &amp; Productivity:</u>							
24	Employment, Total Weighted Avg CY	12,970	12,673	12,672	12,598	12,538	12,448	12,293
25	Overall RTM's per Employee (000)	70.8	67.4	276.4	272.9	269.3	268.5	265.9
	<u>CHANGE OVER COMPARABLE PERIOD 12 MONTHS EARLIER</u>							
26	Operating Revenues (%)	4.5	10.8	6.4	8.0	10.5	14.7	16.6
27	Operating Expenses (%)	7.2	8.6	8.9	9.2	10.4	13.4	16.7
28	Operating Profit (Loss) (in Millions \$)	-26.7	33.2	-83.1	-23.2	35.8	98.0	54.0
29	Net Income (Loss)(in Millions \$)	-16.2	27.5	-44.8	-1.1	41.0	78.3	44.4
30	RPMs (Sch. Svc.) (%)	7.3	10.4	7.1	7.8	9.3	11.0	10.9
31	ASMs (Sch. Svc.) (%)	7.8	5.5	6.9	6.3	7.6	9.0	9.0
32	Operating Revenues per RTM (%)	-2.8	0.7	-0.7	0.3	1.3	3.7	5.6
33	Operating Expense per RTM (%)	-0.3	-1.3	1.6	1.4	1.3	2.5	5.7
34	Passenger Revenue per RPM (Sch. Svc.)(%)	-2.8	1.3	-0.3	0.8	2.0	4.5	6.3



**QUARTERLY FINANCIAL & TRAFFIC REVIEW**  
**SYSTEM OPERATIONS**  
**SkyWest Airlines**

ITEMS		QUARTER ENDED		12 MONTHS ENDED				
		2013/06	2012/06	2013/06	2013/03	2012/12	2012/09	2012/06
	<u>FINANCIAL RESULTS: (\$Millions)</u>							
1	Operating Revenues	463.1	509.1	1,838.5	1,884.6	1,930.1	1,965.3	2,013.9
2	Operating Expenses	411.9	467.5	1,661.2	1,716.7	1,774.9	1,834.1	1,897.6
3	Operating Profit (Loss)	51.2	41.6	177.4	167.8	155.3	131.2	116.3
4	Net Income (Loss)	24.7	18.2	80.9	74.3	66.3	51.5	41.8
	<u>TRAFFIC: (Billions)</u>							
5	RPMs - Scheduled Svc.	3.9	3.6	14.7	14.4	14.2	14.0	13.9
6	ASMs - Scheduled Svc.	4.7	4.3	17.8	17.5	17.3	17.2	17.1
7	Overall RTMs (All Svc.)	0.4	0.4	1.5	1.4	1.4	1.4	1.4
8	Overall ATMs (All Svc.)	0.6	0.6	2.4	2.3	2.3	2.3	2.3
	<u>YIELD &amp; UNIT COST &amp; PROFITS: (Cents)</u>							
9	Operating Revenue per RTM	120.0	141.6	125.1	130.6	136.0	140.5	145.1
10	Operating Expense per RTM	106.7	130.1	113.0	118.9	125.1	131.1	136.7
11	Operating Profit (Loss) per RTM	13.3	11.6	12.1	11.6	10.9	9.4	8.4
12	Operating Expense per ATM	66.8	0.1	70.1	73.6	76.6	79.5	0.1
13	Passenger Revenue per RPM	11.67	13.89	12.17	12.73	13.30	13.76	14.22
	<u>FINANCIAL RATIOS:</u>							
14	Operating Revenues to Total Investment	*	*	0.84	0.86	0.88	0.90	0.61
15	Times Interest Earned	*	*	3.80	3.52	3.20	2.66	2.35
16	Current Assets to Current Liabilities	*	*	2.01	2.10	2.07	2.05	2.00
17	No. of Days Cash Coverage of Cash Exp.	*	*	125.0	108.5	114.8	114.3	89.2
	<u>FINANCIAL PERCENTAGES:</u>							
18	Operating Profit (Loss) to Operating Revenue	11.0	8.2	9.6	8.9	8.0	6.7	5.8
19	Net Income to Stockholders Equity	*	*	6.74	6.30	5.69	4.47	0.91
20	Corporate Return on Investment	*	*	5.8	5.6	5.3	4.6	2.8
21	Debt to Total Investment	*	*	43.3	44.4	45.1	46.1	46.8
	<u>PASSENGER LOAD FACTOR: (Sch. Svc. %)</u>							
22	Actual	82.9	83.4	82.5	82.6	82.0	81.5	81.0
23	Breakeven	79.3	79.9	80.0	80.1	79.4	79.7	79.6
	<u>Employment &amp; Productivity:</u>							
24	Employment, Total Weighted Avg CY	9,420	9,366	9,358	9,344	9,345	9,387	9,402
25	Overall RTM's per Employee (000)	41.0	38.4	157.1	154.5	151.9	149.0	147.6
	<u>CHANGE OVER COMPARABLE PERIOD 12 MONTHS EARLIER</u>							
26	Operating Revenues (%)	-9.0	-0.8	-8.7	-6.6	-3.6	-1.5	2.2
27	Operating Expenses (%)	-11.9	-2.6	-12.5	-10.1	-6.3	-1.8	3.7
28	Operating Profit (Loss) (in Millions \$)	9.5	8.2	61.0	59.7	46.4	2.7	-24.5
29	Net Income (Loss)(in Millions \$)	6.5	5.3	39.0	37.8	29.7	3.6	-14.7
30	RPMs (Sch. Svc.) (%)	7.4	3.0	5.9	4.8	4.2	3.3	3.3
31	ASMs (Sch. Svc.) (%)	8.1	-0.9	4.0	1.7	1.4	0.7	1.0
32	Operating Revenues per RTM (%)	-15.3	-3.7	-13.8	-10.9	-7.5	-4.7	-1.1
33	Operating Expense per RTM (%)	-17.9	-5.5	-17.3	-14.2	-10.0	-4.9	0.3
34	Passenger Revenue per RPM (Sch. Svc.)(%)	-16.0	-4.0	-14.4	-11.4	-7.9	-5.0	-1.5

# QUARTERLY FINANCIAL & TRAFFIC REVIEW

## SYSTEM OPERATIONS

### Southwest Airlines

ITEMS		QUARTER ENDED		12 MONTHS ENDED				
		2013/06	2012/06	2013/06	2013/03	2012/12	2012/09	2012/06
	<u>FINANCIAL RESULTS: (\$Millions)</u>							
1	Operating Revenues	4,642.5	4,615.9	17,207.8	17,181.2	17,087.6	17,023.3	17,025.9
2	Operating Expenses	4,209.8	4,156.2	16,562.8	16,509.2	16,464.4	16,344.5	16,173.2
3	Operating Profit (Loss)	432.7	459.7	645.0	671.9	623.2	678.8	852.7
4	Net Income (Loss)	224.0	228.3	376.9	381.2	421.0	494.9	339.0
	<u>TRAFFIC: (Billions)</u>							
5	RPMs - Scheduled Svc.	23.9	22.4	87.7	86.2	89.7	93.9	98.6
6	ASMs - Scheduled Svc.	29.3	27.4	109.4	107.5	112.0	116.9	122.6
7	Overall RTMs (All Svc.)	2.4	2.3	8.9	8.8	9.1	9.5	10.0
8	Overall ATMs (All Svc.)	3.6	3.4	13.4	13.2	13.8	14.7	15.6
	<u>YIELD &amp; UNIT COST &amp; PROFITS: (Cents)</u>							
9	Operating Revenue per RTM	191.5	203.1	193.3	196.3	187.7	178.8	170.5
10	Operating Expense per RTM	173.7	182.9	186.0	188.6	180.8	171.7	162.0
11	Operating Profit (Loss) per RTM	17.9	20.2	7.2	7.7	6.8	7.1	8.5
12	Operating Expense per ATM	118.6	0.1	124.0	125.0	119.4	111.4	0.1
13	Passenger Revenue per RPM	18.31	18.67	18.11	18.20	17.22	16.42	15.70
	<u>FINANCIAL RATIOS:</u>							
14	Operating Revenues to Total Investment	*	*	1.72	1.69	1.66	1.63	1.08
15	Times Interest Earned	*	*	6.66	6.35	6.45	6.68	4.46
16	Current Assets to Current Liabilities	*	*	0.79	0.79	0.86	0.89	0.87
17	No. of Days Cash Coverage of Cash Exp.	*	*	78.9	73.1	69.4	76.0	77.2
	<u>FINANCIAL PERCENTAGES:</u>							
18	Operating Profit (Loss) to Operating Revenue	9.3	10.0	3.7	3.9	3.6	4.0	5.0
19	Net Income to Stockholders Equity	*	*	5.45	5.46	6.05	7.21	1.24
20	Corporate Return on Investment	*	*	4.8	4.9	5.3	6.1	3.2
21	Debt to Total Investment	*	*	30.2	30.0	31.1	31.5	32.4
	<u>PASSENGER LOAD FACTOR: (Sch. Svc. %)</u>							
22	Actual	81.5	81.7	80.2	80.2	80.1	80.3	80.4
23	Breakeven	72.6	71.8	76.7	76.5	76.7	76.5	75.6
	<u>Employment &amp; Productivity:</u>							
24	Employment, Total Weighted Avg CY	45,435	46,142	45,781	45,958	45,978	45,874	45,615
25	Overall RTM's per Employee (000)	53.3	49.3	194.5	190.5	198.0	207.5	218.9
	<u>CHANGE OVER COMPARABLE PERIOD 12 MONTHS EARLIER</u>							
26	Operating Revenues (%)	0.6	4.7	1.1	2.2	3.0	4.8	7.8
27	Operating Expenses (%)	1.3	-1.5	2.4	1.7	3.2	5.2	8.5
28	Operating Profit (Loss) (in Millions \$)	-26.9	272.9	-207.7	92.1	-12.5	-25.8	-39.0
29	Net Income (Loss)(in Millions \$)	-4.3	60.8	38.0	103.1	245.1	338.0	-198.7
30	RPMs (Sch. Svc.) (%)	6.8	-18.9	-11.0	-17.0	-13.5	-9.0	-3.2
31	ASMs (Sch. Svc.) (%)	7.0	-18.4	-10.8	-16.6	-12.7	-8.4	-2.8
32	Operating Revenues per RTM (%)	-5.7	28.8	13.3	22.6	18.8	15.2	11.4
33	Operating Expense per RTM (%)	-5.0	21.1	14.8	22.1	19.1	15.6	12.2
34	Passenger Revenue per RPM (Sch. Svc.)(%)	-1.9	27.0	15.3	23.0	17.6	14.2	10.6

# QUARTERLY FINANCIAL & TRAFFIC REVIEW

## SYSTEM OPERATIONS

### US Airways

ITEMS		QUARTER ENDED		12 MONTHS ENDED				
		2013/06	2012/06	2013/06	2013/03	2012/12	2012/09	2012/06
	<u>FINANCIAL RESULTS: (\$Millions)</u>							
1	Operating Revenues	3,945.7	3,835.1	14,346.7	14,236.1	14,121.0	13,996.2	13,901.8
2	Operating Expenses	3,468.8	3,440.1	13,397.2	13,368.4	13,299.0	13,175.6	13,165.6
3	Operating Profit (Loss)	476.9	395.1	949.5	867.7	822.0	820.6	736.2
4	Net Income (Loss)	325.0	321.5	703.9	700.5	702.5	700.2	536.7
	<u>TRAFFIC: (Billions)</u>							
5	RPMs - Scheduled Svc.	17.4	16.4	64.5	63.5	62.4	62.0	61.6
6	ASMs - Scheduled Svc.	20.2	19.4	75.7	74.9	74.2	74.0	73.5
7	Overall RTMs (All Svc.)	1.8	1.7	6.8	6.7	6.6	6.6	6.5
8	Overall ATMs (All Svc.)	3.0	2.9	11.1	11.0	10.9	10.9	10.8
	<u>YIELD &amp; UNIT COST &amp; PROFITS: (Cents)</u>							
9	Operating Revenue per RTM	216.1	222.4	210.8	212.3	214.4	213.8	213.3
10	Operating Expense per RTM	189.9	199.5	196.8	199.4	201.9	201.3	202.0
11	Operating Profit (Loss) per RTM	26.1	22.9	13.9	12.9	12.5	12.5	11.3
12	Operating Expense per ATM	116.8	0.1	120.4	121.4	121.9	120.9	0.1
13	Passenger Revenue per RPM	14.54	14.72	13.99	14.03	14.17	14.19	14.20
	<u>FINANCIAL RATIOS:</u>							
14	Operating Revenues to Total Investment	*	*	2.70	3.04	3.16	3.29	2.32
15	Times Interest Earned	*	*	4.11	3.86	3.88	3.89	3.36
16	Current Assets to Current Liabilities	*	*	1.38	0.91	0.94	0.97	0.91
17	No. of Days Cash Coverage of Cash Exp.	*	*	100.4	70.3	66.3	68.6	70.9
	<u>FINANCIAL PERCENTAGES:</u>							
18	Operating Profit (Loss) to Operating Revenue	12.1	10.3	6.6	6.1	5.8	5.9	5.3
19	Net Income to Stockholders Equity	*	*	41.91	47.44	53.05	59.35	12.54
20	Corporate Return on Investment	*	*	18.0	20.2	21.2	22.1	12.9
21	Debt to Total Investment	*	*	71.4	66.7	67.0	66.0	69.4
	<u>PASSENGER LOAD FACTOR: (Sch. Svc. %)</u>							
22	Actual	86.1	84.6	85.2	84.8	84.1	83.8	83.8
23	Breakeven	76.4	78.4	81.9	82.5	82.2	81.7	82.0
	<u>Employment &amp; Productivity:</u>							
24	Employment, Total Weighted Avg CY	30,960	30,402	30,551	30,411	30,375	30,430	30,398
25	Overall RTM's per Employee (000)	59.0	56.7	222.8	220.5	216.8	215.1	214.4
	<u>CHANGE OVER COMPARABLE PERIOD 12 MONTHS EARLIER</u>							
26	Operating Revenues (%)	2.9	7.0	3.2	4.3	5.9	6.9	8.4
27	Operating Expenses (%)	0.8	1.0	1.8	1.8	3.0	4.2	7.5
28	Operating Profit (Loss) (in Millions \$)	81.8	215.7	213.3	347.2	388.3	376.3	158.6
29	Net Income (Loss)(in Millions \$)	3.5	202.6	167.2	366.4	522.1	500.6	174.2
30	RPMs (Sch. Svc.) (%)	5.9	0.9	4.7	3.3	2.7	2.5	2.4
31	ASMs (Sch. Svc.) (%)	4.2	1.4	3.0	2.3	2.2	2.0	1.1
32	Operating Revenues per RTM (%)	-2.9	6.9	-1.2	1.3	3.8	5.3	6.8
33	Operating Expense per RTM (%)	-4.8	0.9	-2.6	-1.1	1.0	2.6	5.9
34	Passenger Revenue per RPM (Sch. Svc.)(%)	-1.3	6.6	-1.5	0.5	2.9	5.4	7.7

# Y FINANCIAL & TRAFFIC REVIEW

## SYSTEM OPERATIONS

### United Air Lines

ITEMS		QUARTER ENDED		12 MONTHS ENDED				
		2013/06	2012/06	2013/06	2013/03	2012/12	2012/09	2012/06
	<b>FINANCIAL RESULTS: (\$Millions)</b>							
1	Operating Revenues	10,003.0	9,940.6	37,341.8	37,279.3	37,160.2	37,470.3	37,786.1
2	Operating Expenses	9,231.9	9,357.1	37,091.3	37,216.5	37,121.2	36,922.7	36,495.9
3	Operating Profit (Loss)	771.1	583.5	250.5	62.8	39.0	547.6	1,290.2
4	Net Income (Loss)	484.0	369.6	-477.0	-591.4	-661.0	-213.3	462.5
	<b>TRAFFIC: (Bllions)</b>							
5	RPMs - Scheduled Svc.	46.6	47.7	177.4	178.4	179.1	180.7	181.7
6	ASMs - Scheduled Svc.	54.9	56.2	211.8	213.1	215.8	218.1	219.0
7	Overall RTMs (All Svc.)	5.2	5.4	20.1	20.3	20.4	20.6	20.7
8	Overall ATMs (All Svc.)	7.9	8.6	31.2	31.8	32.6	33.2	33.4
	<b>YIELD &amp; UNIT COST &amp; PROFITS: (Cents)</b>							
9	Operating Revenue per RTM	190.8	184.0	185.9	184.1	182.2	181.8	182.3
10	Operating Expense per RTM	176.1	173.2	184.7	183.8	182.0	179.1	176.1
11	Operating Profit (Loss) per RTM	14.7	10.8	1.2	0.3	0.2	2.7	6.2
12	Operating Expense per ATM	116.4	0.1	119.1	117.1	114.1	111.4	0.1
13	Passenger Revenue per RPM	14.57	14.64	14.39	14.41	14.37	14.41	14.49
	<b>FINANCIAL RATIOS:</b>							
14	Operating Revenues to Total Investment	*	*	2.72	2.69	3.02	3.57	0.09
15	Times Interest Earned	*	*	0.34	0.22	0.15	0.74	1.55
16	Current Assets to Current Liabilities	*	*	0.75	0.72	0.79	0.83	0.88
17	No. of Days Cash Coverage of Cash Exp.	*	*	61.67	55.61	67.67	69.63	81.65
	<b>FINANCIAL PERCENTAGES:</b>							
18	Operating Profit (Loss) to Operating Revenue	7.7	5.9	0.7	0.2	0.1	1.5	3.4
19	Net Income to Stockholders Equity	*	*	-27.92	-33.23	-53.67	-32.50	56.05
20	Corporate Return on Investment	*	*	1.7	1.2	0.9	5.7	0.3
21	Debt to Total Investment	*	*	86.8	93.3	91.7	82.8	84.0
	<b>PASSENGER LOAD FACTOR: (Sch. Svc. %)</b>							
22	Actual	85.0	84.7	83.8	83.7	83.0	82.8	83.0
23	Breakeven	84.1	86.4	90.8	91.4	90.6	88.4	85.7
	<b>Employment &amp; Productivity:</b>							
24	Employment, Total Weighted Avg CY	82,511	82,451	82,343	82,328	82,192	81,834	81,310
25	Overall RTM's per Employee (000)	63.5	65.5	243.9	245.9	248.2	251.9	254.9
	<b>CHANGE OVER COMPARABLE PERIOD 12 MONTHS EARLIER</b>							
26	Operating Revenues (%)	0.6	0.9	-1.2	-1.1	-0.5	2.3	6.1
27	Operating Expenses (%)	-1.3	3.5	1.6	2.9	4.6	6.1	8.2
28	Operating Profit (Loss) (in Millions \$)	187.6	-231.3	-1,039.7	-1,458.6	-1,804.9	-1,289.3	-586.8
29	Net Income (Loss)(in Millions \$)	114.5	-174.5	-939.5	-1,228.5	-1,511.9	-888.3	-318.7
30	RPMs (Sch. Svc.) (%)	-2.1	0.4	-2.4	-1.7	-1.4	-1.0	-0.5
31	ASMs (Sch. Svc.) (%)	-2.4	-0.3	-3.3	-2.8	-1.5	-0.8	-0.2
32	Operating Revenues per RTM (%)	3.7	1.4	2.0	1.4	1.6	4.3	8.1
33	Operating Expense per RTM (%)	1.7	4.1	4.9	5.5	6.8	8.2	10.2
34	Passenger Revenue per RPM (Sch. Svc.)(%)	-0.5	1.5	-0.7	-0.1	0.5	2.9	6.4

# QUARTERLY FINANCIAL & TRAFFIC REVIEW

## SYSTEM OPERATIONS

### System Cargo Majors

ITEMS		QUARTER ENDED		12 MONTHS ENDED				
		2013/06	2012/06	2013/06	2013/03	2012/12	2012/09	2012/06
<u>FINANCIAL RESULTS: (\$Millions)</u>								
1	Operating Revenues	8,364.3	7,780.8	33,462.9	32,879.4	32,840.7	32,475.6	32,527.1
2	Operating Expenses	8,174.7	6,903.5	32,272.0	31,000.8	30,762.3	30,371.2	30,233.0
3	Operating Profit (Loss)	189.6	877.3	1,190.9	1,878.6	2,078.4	2,104.4	2,294.1
4	Net Income (Loss)	-21.0	451.0	470.2	942.3	1,006.8	1,040.0	1,296.3
<u>TRAFFIC: (Bllions)</u>								
5	RTMs - Scheduled Svc.	4.6	4.6	18.4	18.4	18.4	18.5	18.5
6	ATMs - Scheduled Svc.	7.8	7.7	31.3	31.3	31.3	31.2	31.2
7	Overall RTMs (All Svc.)	5.6	5.5	22.3	22.2	22.1	21.9	21.9
8	Overall ATMs (All Svc.)	9.6	9.5	38.3	38.3	38.1	37.8	37.5
<u>YIELD &amp; UNIT COST &amp; PROFITS: (Cents)</u>								
9	Operating Revenue per RTM	149.8	141.6	150.2	148.2	148.6	148.0	148.7
10	Operating Expense per RTM	146.4	125.7	144.9	139.7	139.2	138.4	138.2
11	Operating Profit (Loss) per RTM	3.4	16.0	5.3	8.5	9.4	9.6	10.5
12	Operating Expense per ATM	85.5	72.8	84.2	81.1	80.7	80.4	80.6
13	Passenger Revenue per RPM	*	*	*	*	*	*	*
<u>FINANCIAL RATIOS:</u>								
14	Operating Revenues to Total Investment	*	*	1.88	1.85	1.97	1.99	1.35
15	Times Interest Earned	*	*	6.15	13.68	16.03	22.77	27.53
16	Current Assets to Current Liabilities	*	*	0.41	1.26	1.02	0.89	1.00
17	No. of Days Cash Coverage of Cash Exp.	*	*	11.91	12.11	13.98	12.15	17.25
<u>FINANCIAL PERCENTAGES:</u>								
18	Operating Profit (Loss) to Operating Revenue	2.3	11.3	3.6	5.7	6.3	6.5	7.1
19	Net Income to Stockholders Equity	*	*	3.50	7.07	7.65	8.03	2.52
20	Corporate Return on Investment	*	*	3.4	6.0	6.7	6.8	5.7
21	Debt to Total Investment	*	*	18.9	36.9	22.4	20.0	20.3
<u>TON LOAD FACTOR: (%)</u>								
22	Scheduled Svc.	59.1	59.4	58.8	58.9	59.0	59.2	59.2
23	All Services	58.4	58.0	58.1	58.0	58.0	58.0	58.3
<u>Employment &amp; Productivity:</u>								
24	Employment, Total Weighted Avg CY	145,010	133,753	144,098	141,284	138,598	136,011	133,238
25	Overall RTM's per Employee (000)	38.5	41.1	154.6	157.1	159.5	161.3	164.1
		<b>CHANGE OVER COMPARABLE PERIOD 12 MONTHS EARLIER</b>						
26	Operating Revenues (%)	7.5	-5.6	2.9	-0.3	0.9	2.0	5.2
27	Operating Expenses (%)	18.4	-11.5	6.7	-0.4	0.1	0.7	3.3
28	Operating Profit (Loss) (in Millions \$)	-687.7	436.5	-1,103.2	21.0	272.8	412.1	631.3
29	Net Income (Loss)(in Millions \$)	-472.0	217.4	-826.1	-136.7	-21.8	36.5	489.6
30	RTMs (All Svc.) (%)	-0.3	-0.5	-0.4	-0.4	-0.1	0.1	0.2
31	ATMs (All Svc.) (%)	0.3	1.1	0.3	0.5	1.2	1.6	2.6
32	Operating Revenues per RTM (%)	5.8	-5.6	1.0	-1.8	-0.6	1.1	4.4
33	Operating Expense per RTM (%)	16.5	-11.5	4.8	-1.8	-1.4	-0.1	2.5
34	Passenger Revenue per RPM (Sch. Svc.)(%)	*	*	**	**	**	**	**

1/ For comparison purposes, all data has been retroactively adjusted to include Continental.

# QUARTERLY FINANCIAL & TRAFFIC REVIEW

## SYSTEM OPERATIONS

### Domestic Cargo Majors

ITEMS		QUARTER ENDED		12 MONTHS ENDED				
		2013/06	2012/06	2013/06	2013/03	2012/12	2012/09	2012/06
	<u>FINANCIAL RESULTS: (\$Millions)</u>							
1	Operating Revenues	5,829.3	5,306.4	23,175.6	22,652.7	22,698.8	22,193.6	22,058.8
2	Operating Expenses	4,758.8	4,118.1	18,868.5	18,227.7	18,233.3	18,160.2	18,198.4
3	Operating Profit (Loss)	1,070.4	1,188.3	4,307.1	4,425.0	4,465.5	4,033.5	3,860.4
4	Net Income (Loss)	675.8	680.6	2,730.9	2,735.7	2,751.9	2,484.0	2,408.3
	<u>TRAFFIC: (Bllions)</u>							
5	RTMs - Scheduled Svc.	2.3	2.3	9.5	9.4	9.4	9.4	9.5
6	ATMs - Scheduled Svc.	4.1	4.1	16.5	16.5	16.5	16.4	16.4
7	Overall RTMs (All Svc.)	2.5	2.5	10.2	10.1	10.1	10.0	10.0
8	Overall ATMs (All Svc.)	4.4	4.3	17.9	17.8	17.7	17.6	17.4
	<u>YIELD &amp; UNIT COST &amp; PROFITS: (Cents)</u>							
9	Operating Revenue per RTM	232.1	213.5	228.1	223.5	224.8	221.2	220.9
10	Operating Expense per RTM	189.5	165.7	185.7	179.8	180.6	181.0	182.2
11	Operating Profit (Loss) per RTM	42.6	47.8	42.4	43.7	44.2	40.2	38.7
12	Operating Expense per ATM	107.7	94.9	105.5	102.4	103.0	103.5	104.6
13	Passenger Revenue per RPM	*	*	*	*	*	*	*
	<u>FINANCIAL RATIOS:</u>							
14	Operating Revenues to Total Investment	*	*	**	**	**	**	**
15	Times Interest Earned	*	*	**	**	**	**	**
16	Current Assets to Current Liabilities	*	*	**	**	**	**	**
17	No. of Days Cash Coverage of Cash Exp.	*	*	**	**	**	**	**
	<u>FINANCIAL PERCENTAGES:</u>							
18	Operating Profit (Loss) to Operating Revenue	18.4	22.4	18.6	19.5	19.7	18.2	17.5
19	Net Income to Stockholders Equity	*	*	3.59	5.33	6.96	7.64	4.68
20	Corporate Return on Investment	*	*	28.8	28.4	30.1	27.3	10.1
21	Debt to Total Investment	*	*	**	**	**	**	**
	<u>TON LOAD FACTOR: (%)</u>							
22	Scheduled Svc.	57.2	57.5	57.1	57.2	57.3	57.4	57.6
23	All Services	56.8	57.3	56.8	56.9	57.0	57.2	57.4
	<u>Employment &amp; Productivity:</u>							
24	Employment, Total Weighted Avg CY	*	*	**	**	**	**	**
25	Overall RTM's per Employee (000)	*	*	**	**	**	**	**
	<u>CHANGE OVER COMPARABLE PERIOD 12 MONTHS EARLIER</u>							
26	Operating Revenues (%)	9.9	-3.0	5.1	1.9	4.7	6.6	11.3
27	Operating Expenses (%)	15.6	-11.9	3.7	-2.8	-1.9	-0.6	2.1
28	Operating Profit (Loss) (in Millions \$)	-117.8	394.8	446.8	959.4	1,374.5	1,484.3	1,861.3
29	Net Income (Loss)(in Millions \$)	-4.8	191.2	322.6	518.5	841.9	909.0	1,278.0
30	RTMs (All Svc.) (%)	0.2	0.4	0.0	0.0	0.3	0.2	-0.2
31	ATMs (All Svc.) (%)	1.0	3.1	0.7	1.2	1.5	1.8	2.1
32	Operating Revenues per RTM (%)	8.7	-4.3	3.3	0.1	1.8	2.9	8.4
33	Operating Expense per RTM (%)	14.3	-13.1	1.9	-4.6	-4.6	-4.0	-0.5
34	Passenger Revenue per RPM (Sch. Svc.)(%)	*	*	**	**	**	**	**

**QUARTERLY FINANCIAL & TRAFFIC REVIEW**  
**SYSTEM OPERATIONS**  
**Int'l Cargo Majors**

ITEMS		QUARTER ENDED		12 MONTHS ENDED				
		2013/06	2012/06	2013/06	2013/03	2012/12	2012/09	2012/06
	<u>FINANCIAL RESULTS: (\$Millions)</u>							
1	Operating Revenues	2,237.2	2,140.9	9,053.2	8,956.9	8,873.5	9,052.1	9,264.8
2	Operating Expenses	3,137.0	2,496.9	12,313.6	11,673.5	11,437.8	11,137.2	10,977.6
3	Operating Profit (Loss)	-899.8	-356.0	-3,260.4	-2,716.6	-2,564.3	-2,085.1	-1,712.8
4	Net Income (Loss)	-696.0	-252.8	-2,317.3	-1,874.1	-1,827.1	-1,522.1	-1,189.3
	<u>TRAFFIC: (Bllions)</u>							
5	RTMs - Scheduled Svc.	2.3	2.3	9.0	9.0	9.0	9.0	9.0
6	ATMs - Scheduled Svc.	3.7	3.7	14.8	14.8	14.8	14.8	14.8
7	Overall RTMs (All Svc.)	2.3	2.3	9.0	9.0	9.1	9.1	9.1
8	Overall ATMs (All Svc.)	3.7	3.8	14.9	15.0	15.0	15.0	15.0
	<u>YIELD &amp; UNIT COST &amp; PROFITS: (Cents)</u>							
9	Operating Revenue per RTM	98.9	93.5	100.5	99.1	97.8	99.6	101.7
10	Operating Expense per RTM	138.7	109.0	136.7	129.2	126.1	122.5	120.5
11	Operating Profit (Loss) per RTM	-39.8	-15.5	-36.2	-30.1	-28.3	-22.9	-18.8
12	Operating Expense per ATM	84.7	66.6	82.4	77.9	76.1	74.2	73.0
13	Passenger Revenue per RPM	*	*	*	*	*	*	*
	<u>FINANCIAL RATIOS:</u>							
14	Operating Revenues to Total Investment	*	*	**	**	**	**	**
15	Times Interest Earned	*	*	**	**	**	**	**
16	Current Assets to Current Liabilities	*	*	**	**	**	**	**
17	No. of Days Cash Coverage of Cash Exp.	*	*	**	**	**	**	**
	<u>FINANCIAL PERCENTAGES:</u>							
18	Operating Profit (Loss) to Operating Revenue	-40.2	-16.6	-36.0	-30.3	-28.9	-23.0	-18.5
19	Net Income to Stockholders Equity	*	*	3.59	5.33	6.96	7.64	2.35
20	Corporate Return on Investment	*	*	-35.7	-28.8	-30.0	-25.3	5.7
21	Debt to Total Investment	*	*	**	**	**	**	**
	<u>TON LOAD FACTOR: (%)</u>							
22	Scheduled Svc.	61.3	61.5	60.7	60.8	60.9	61.1	61.1
23	All Services	61.1	61.1	60.3	60.3	60.3	60.6	60.5
	<u>Employment &amp; Productivity:</u>							
24	Employment, Total Weighted Avg CY	*	*	**	**	**	**	**
25	Overall RTM's per Employee (000)	*	*	**	**	**	**	**
		<b>CHANGE OVER COMPARABLE PERIOD 12 MONTHS EARLIER</b>						
26	Operating Revenues (%)	4.5	-14.4	-2.3	-6.9	-9.1	-9.0	-7.6
27	Operating Expenses (%)	25.6	-13.4	12.2	2.7	2.4	1.9	4.5
28	Operating Profit (Loss) (in Millions \$)	-543.8	26.4	-1,547.6	-977.4	-1,151.6	-1,098.1	-1,234.0
29	Net Income (Loss)(in Millions \$)	-443.3	19.6	-1,128.0	-665.2	-874.8	-875.3	-783.4
30	RTMs (All Svc.) (%)	-0.8	-1.3	-0.8	-0.9	-0.4	-0.1	0.7
31	ATMs (All Svc.) (%)	-0.4	-1.0	-0.2	-0.3	0.9	1.4	3.1
32	Operating Revenues per RTM (%)	5.8	-13.3	-1.2	-5.9	-8.5	-8.8	-8.2
33	Operating Expense per RTM (%)	27.2	-12.3	13.4	3.9	3.0	2.1	3.8
34	Passenger Revenue per RPM (Sch. Svc.)(%)	*	*	**	**	**	**	**

# QUARTERLY FINANCIAL & TRAFFIC REVIEW

## SYSTEM OPERATIONS

### Atlas Air

ITEMS		QUARTER ENDED		12 MONTHS ENDED				
		2013/06	2012/06	2013/06	2013/03	2012/12	2012/09	2012/06
	<u>FINANCIAL RESULTS: (\$Millions)</u>							
1	Operating Revenues	369.4	395.0	1,518.3	1,543.9	1,530.2	1,466.4	1,421.0
2	Operating Expenses	338.6	342.7	1,325.5	1,329.6	1,311.2	1,278.0	1,248.7
3	Operating Profit (Loss)	30.8	52.3	192.8	214.3	219.0	188.4	172.3
4	Net Income (Loss)	6.4	26.5	85.1	105.1	103.3	95.4	90.6
	<u>TRAFFIC: (Billions)</u>							
5	RTMs - Scheduled Svc.	0.0	0.0	0.0	0.0	0.0	0.0	0.0
6	ATMs - Scheduled Svc.	0.0	0.0	0.0	0.0	0.0	0.0	0.0
7	Overall RTMs (All Svc.)	1.0	0.9	3.8	3.7	3.6	3.4	3.3
8	Overall ATMs (All Svc.)	1.8	1.7	6.8	6.7	6.6	6.3	6.0
	<u>YIELD &amp; UNIT COST &amp; PROFITS: (Cents)</u>							
9	Operating Revenue per RTM	37.5	45.3	39.8	41.7	42.6	43.0	43.0
10	Operating Expense per RTM	34.4	39.3	34.7	35.9	36.5	37.5	37.8
11	Operating Profit (Loss) per RTM	3.1	6.0	5.0	5.8	6.1	5.5	5.2
12	Operating Expense per ATM	19.2	0.0	19.4	19.7	19.8	20.2	0.0
13	Passenger Revenue per RPM	*	*	*	*	*	*	*
	<u>FINANCIAL RATIOS:</u>							
14	Operating Revenues to Total Investment	*	*	0.74	0.83	0.91	1.01	0.76
15	Times Interest Earned	*	*	2.23	2.86	3.56	5.40	7.12
16	Current Assets to Current Liabilities	*	*	1.83	1.23	1.81	0.65	0.63
17	No. of Days Cash Coverage of Cash Exp.	*	*	75.98	70.00	95.67	49.61	42.28
	<u>FINANCIAL PERCENTAGES:</u>							
18	Operating Profit (Loss) to Operating Revenue	8.3	13.2	12.7	13.9	14.3	12.8	12.1
19	Net Income to Stockholders Equity	*	*	12.56	15.94	16.13	15.55	3.77
20	Corporate Return on Investment	*	*	8.5	9.8	9.9	9.0	6.2
21	Debt to Total Investment	*	*	70.5	69.5	69.3	62.1	60.4
	<u>TON LOAD FACTOR: (%)</u>							
22	Scheduled Svc.	0.0	0.0	0.0	0.0	0.0	0.0	0.0
23	All Services	55.8	52.2	55.9	55.0	54.2	53.8	54.9
	<u>Employment &amp; Productivity:</u>							
24	Employment, Total Weighted Avg CY	1,685	1,548	1,634	1,600	1,572	1,558	1,499
25	Overall RTM's per Employee (000)	584.0	562.7	2,337.1	2,316.5	2,285.6	2,190.3	2,205.5
	<u>CHANGE OVER COMPARABLE PERIOD 12 MONTHS EARLIER</u>							
26	Operating Revenues (%)	-6.5	23.2	6.8	14.7	19.1	16.5	16.0
27	Operating Expenses (%)	-1.2	19.9	6.1	11.6	15.2	15.2	17.3
28	Operating Profit (Loss) (in Millions \$)	-21.5	17.6	20.5	59.6	72.6	39.2	11.2
29	Net Income (Loss)(in Millions \$)	-20.0	7.1	-5.5	21.7	23.0	9.5	-1.5
30	RTMs (All Svc.) (%)	0.0	0.0	0.0	0.0	0.0	0.0	0.0
31	ATMs (All Svc.) (%)	0.0	0.0	0.0	0.0	0.0	0.0	0.0
32	Operating Revenues per RTM (%)	-17.2	20.7	-7.5	1.7	7.4	10.4	11.4
33	Operating Expense per RTM (%)	-12.5	17.4	-8.1	-1.0	3.9	9.2	12.7
34	Passenger Revenue per RPM (Sch. Svc.)(%)	*	*	**	**	**	**	**



# QUARTERLY FINANCIAL & TRAFFIC REVIEW

## SYSTEM OPERATIONS

### Federal Express

ITEMS		QUARTER ENDED		12 MONTHS ENDED				
		2013/06	2012/06	2013/06	2013/03	2012/12	2012/09	2012/06
<u>FINANCIAL RESULTS: (\$Millions)</u>								
1	Operating Revenues	6,586.0	6,432.7	26,138.4	25,985.1	25,931.8	25,632.4	25,682.7
2	Operating Expenses	6,518.9	6,113.6	25,477.6	25,072.4	24,835.4	24,465.7	24,314.3
3	Operating Profit (Loss)	67.2	319.1	660.8	912.7	1,096.4	1,166.7	1,368.4
4	Net Income (Loss)	-38.4	110.4	314.2	463.0	596.1	642.6	785.3
<u>TRAFFIC: (Billions)</u>								
5	RTMs - Scheduled Svc.	2.8	2.8	11.1	11.1	11.1	11.1	11.1
6	ATMs - Scheduled Svc.	4.8	4.8	19.3	19.3	19.2	19.1	19.1
7	Overall RTMs (All Svc.)	2.8	2.8	11.2	11.2	11.1	11.1	11.1
8	Overall ATMs (All Svc.)	4.8	4.8	19.5	19.5	19.4	19.3	19.3
<u>YIELD &amp; UNIT COST &amp; PROFITS: (Cents)</u>								
9	Operating Revenue per RTM	238.8	232.5	234.5	232.9	232.8	230.2	230.9
10	Operating Expense per RTM	236.3	220.9	228.6	224.7	223.0	219.7	218.6
11	Operating Profit (Loss) per RTM	2.4	11.5	5.9	8.2	9.8	10.5	12.3
12	Operating Expense per ATM	136.2	0.1	130.9	128.7	127.9	126.6	0.1
13	Passenger Revenue per RPM	*	*	*	*	*	*	*
<u>FINANCIAL RATIOS:</u>								
14	Operating Revenues to Total Investment	*	*	2.90	2.87	2.88	2.87	1.94
15	Times Interest Earned	*	*	999.90	999.90	999.90	999.90	999.00
16	Current Assets to Current Liabilities	*	*	0.87	0.88	0.88	0.84	0.96
17	No. of Days Cash Coverage of Cash Exp.	*	*	10.57	10.82	11.83	12.12	18.78
<u>FINANCIAL PERCENTAGES:</u>								
18	Operating Profit (Loss) to Operating Revenue	1.0	5.0	2.5	3.5	4.2	4.6	5.3
19	Net Income to Stockholders Equity	*	*	3.59	5.33	6.96	7.64	2.35
20	Corporate Return on Investment	*	*	3.2	4.8	6.4	6.9	5.7
21	Debt to Total Investment	*	*	2.7	2.6	2.7	2.7	4.0
<u>TON LOAD FACTOR: (%)</u>								
22	Scheduled Svc.	57.7	57.9	57.5	57.6	57.7	57.9	58.0
23	All Services	57.6	57.7	57.3	57.3	57.4	57.6	57.7
<u>Employment &amp; Productivity:</u>								
24	Employment, Total Weighted Avg CY	137,887	126,679	136,992	134,190	131,514	128,924	126,196
25	Overall RTM's per Employee (000)	20.0	21.8	81.4	83.1	84.7	86.4	88.2
		<b>CHANGE OVER COMPARABLE PERIOD 12 MONTHS EARLIER</b>						
26	Operating Revenues (%)	2.4	0.7	1.8	1.4	2.4	3.1	6.0
27	Operating Expenses (%)	6.6	0.6	4.8	3.3	3.5	3.5	5.5
28	Operating Profit (Loss) (in Millions \$)	-252.0	6.5	-707.6	-449.2	-220.3	-54.8	167.2
29	Net Income (Loss)(in Millions \$)	-148.8	-83.7	-471.1	-406.0	-222.1	-108.3	68.6
30	RTMs (All Svc.) (%)	0.0	0.9	0.4	0.7	0.8	0.9	0.3
31	ATMs (All Svc.) (%)	0.5	2.3	1.4	1.8	2.4	2.6	2.9
32	Operating Revenues per RTM (%)	2.7	-0.2	1.6	0.8	1.8	2.3	5.7
33	Operating Expense per RTM (%)	7.0	-0.3	4.6	2.7	2.8	2.7	5.3
34	Passenger Revenue per RPM (Sch. Svc.)(%)	*	*	**	**	**	**	**

# QUARTERLY FINANCIAL & TRAFFIC REVIEW

## SYSTEM OPERATIONS

### United Parcel Service

ITEMS		QUARTER ENDED		12 MONTHS ENDED				
		2013/06	2012/06	2013/06	2013/03	2012/12	2012/09	2012/06
<u>FINANCIAL RESULTS: (\$Millions)</u>								
1	Operating Revenues	1,408.9	953.1	5,806.2	5,350.5	5,378.6	5,376.9	5,423.3
2	Operating Expenses	1,317.3	447.2	5,468.9	4,598.9	4,615.6	4,627.5	4,669.9
3	Operating Profit (Loss)	91.6	505.9	337.3	751.6	763.0	749.3	753.4
4	Net Income (Loss)	11.0	314.2	70.9	374.1	307.4	302.0	420.4
<u>TRAFFIC: (Billions)</u>								
5	RTMs - Scheduled Svc.	1.8	1.9	7.3	7.3	7.4	7.4	7.4
6	ATMs - Scheduled Svc.	3.0	3.0	12.0	12.0	12.0	12.1	12.2
7	Overall RTMs (All Svc.)	1.8	1.9	7.3	7.3	7.4	7.4	7.4
8	Overall ATMs (All Svc.)	3.0	3.0	12.0	12.0	12.1	12.1	12.2
<u>YIELD &amp; UNIT COST &amp; PROFITS: (Cents)</u>								
9	Operating Revenue per RTM	76.6	51.4	79.4	73.0	73.0	72.7	72.9
10	Operating Expense per RTM	71.6	24.1	74.8	62.8	62.6	62.6	62.8
11	Operating Profit (Loss) per RTM	5.0	27.3	4.6	10.3	10.4	10.1	10.1
12	Operating Expense per ATM	43.8	0.0	45.4	38.2	38.2	38.2	0.0
13	Passenger Revenue per RPM	*	*	*	*	*	*	*
<u>FINANCIAL RATIOS:</u>								
14	Operating Revenues to Total Investment	*	*	0.87	0.78	0.90	0.90	0.60
15	Times Interest Earned	*	*	2.76	10.51	9.12	9.20	9.87
16	Current Assets to Current Liabilities	*	*	-3.33	3.77	1.61	1.35	1.45
17	No. of Days Cash Coverage of Cash Exp.	*	*	2.38	2.07	1.92	1.56	1.92
<u>FINANCIAL PERCENTAGES:</u>								
18	Operating Profit (Loss) to Operating Revenue	6.5	53.1	5.8	14.0	14.2	13.9	13.9
19	Net Income to Stockholders Equity	*	*	1.77	9.40	7.77	7.69	2.68
20	Corporate Return on Investment	*	*	2.2	6.4	6.3	6.3	5.5
21	Debt to Total Investment	*	*	23.7	60.4	34.4	33.4	33.6
<u>TON LOAD FACTOR: (%)</u>								
22	Scheduled Svc.	61.2	61.9	60.9	61.1	61.1	61.2	61.1
23	All Services	61.1	61.6	60.8	60.9	61.0	61.0	60.9
<u>Employment &amp; Productivity:</u>								
24	Employment, Total Weighted Avg CY	5,438	5,526	5,472	5,494	5,513	5,529	5,544
25	Overall RTM's per Employee (000)	338.3	335.7	1,336.3	1,333.8	1,337.1	1,336.9	1,342.2
		<b>CHANGE OVER COMPARABLE PERIOD 12 MONTHS EARLIER</b>						
26	Operating Revenues (%)	47.8	-38.0	7.1	-10.9	-9.5	-6.1	-0.6
27	Operating Expenses (%)	194.5	-69.0	17.1	-18.8	-17.6	-14.4	-9.4
28	Operating Profit (Loss) (in Millions \$)	-414.3	412.4	-416.1	410.6	420.6	427.7	452.9
29	Net Income (Loss)(in Millions \$)	-303.2	293.9	-349.5	247.6	177.2	135.3	422.4
30	RTMs (All Svc.) (%)	-0.8	-2.5	-1.6	-2.1	-1.3	-1.1	0.1
31	ATMs (All Svc.) (%)	-0.1	-0.8	-1.4	-1.6	-0.6	0.1	2.2
32	Operating Revenues per RTM (%)	49.1	-36.4	8.9	-9.0	-8.2	-5.2	-0.9
33	Operating Expense per RTM (%)	197.0	-68.2	19.2	-17.1	-16.4	-13.6	-9.7
34	Passenger Revenue per RPM (Sch. Svc.)(%)	*	*	**	**	**	**	**

**Comparison of Operating Profit (Loss)  
For Individual Passenger and All-Cargo System Majors  
Quarterly and 12-Month Ended Periods  
June 2012 and 2013**

<b>Operating Profit (Loss) (\$Millions)</b>						
<b>Group/Carrier</b>	<b>Quarterly Data</b>			<b>12 Month Ended Data</b>		
	<b>6/2012</b>	<b>6/2013</b>	<b>\$Chg</b>	<b>6/2012</b>	<b>6/2013</b>	<b>\$Chg</b>
<b>System Passenger Majors</b>	2,351.1	3,507.8	1,156.7	5,795.5	6,882.9	1,087.4
Alaska Airlines	191.0	189.5	(1.5)	528.3	597.4	69.1
American Airlines	121.7	478.0	356.3	(767.3)	545.5	1,312.8
American Eagle Airlines	24.8	12.1	(12.7)	86.1	61.5	(24.6)
Delta Air Lines	367.8	949.0	581.2	2,440.2	3,201.0	760.8
Frontier Airlines	15.5	14.5	(1.0)	(23.0)	29.5	52.5
Hawaiian Airlines	30.5	39.6	9.1	142.1	115.2	(26.9)
JetBlue Airways	119.9	93.3	(26.7)	393.6	310.5	(83.1)
SkyWest Airlines	41.6	51.2	9.5	116.3	177.4	61.0
Southwest Airlines	459.7	432.7	(26.9)	852.7	645.0	(207.7)
United Air Lines	583.5	771.1	187.6	1,290.2	250.5	(1,039.7)
US Airways	395.1	476.9	81.8	736.2	949.5	213.3
<b>System Cargo Majors</b>	877.3	189.6	(687.7)	2,294.1	1,190.9	(1,103.2)
Atlas Air	52.3	30.8	(21.5)	172.3	192.8	20.5
Federal Express	319.1	67.2	(252.0)	1,368.4	660.8	(707.6)
United Parcel Service	505.9	91.6	(414.3)	753.4	337.3	(416.1)
<b>System All Majors</b>	3,228.4	3,697.4	469.0	8,089.6	8,073.8	(15.8)
<b>System Passenger Majors</b>	717.7	2,147.8	1,430.2	(264.9)	2,943.8	3,208.8

1/ Delta Air Lines data has been retroactively adjusted to include Northwest.

2/ United Airlines data has been retroactively adjusted to include Continental.

3/ Southwest Airlines data has been retroactively adjusted to include AirTran.

**Comparison of Net Income (Loss)**  
**For Individual Passenger and All-Cargo System Majors**  
**Quarterly and 12-Month Ended Periods**  
**June 2012 and 2013**

Net Income (Loss) (\$Millions)						
Group/Carrier	Quarterly Data			12 Month Ended Data		
	6/2012	6/2013	\$Chg	6/2012	6/2013	\$Chg
System Passenger Majors	717.7	2,147.8	1,430.2	(264.9)	2,943.8	3,208.8
Alaska Airlines	66.0	102.2	36.2	237.7	334.9	97.2
American Airlines	(263.7)	227.8	491.5	(3,190.2)	(11.2)	3,179.0
American Eagle Airlines	30.0	12.5	(17.5)	45.8	(59.5)	(105.3)
Delta Air Lines	(120.4)	688.7	809.1	1,068.5	1,845.0	776.5
Frontier Airlines	8.5	8.1	(0.5)	(17.0)	5.8	22.8
Hawaiian Airlines	7.1	14.5	7.4	70.2	48.8	(21.4)
JetBlue Airways	52.5	36.4	(16.2)	140.0	95.3	(44.8)
SkyWest Airlines	18.2	24.7	6.5	41.8	80.9	39.0
Southwest Airlines	228.3	224.0	(4.3)	339.0	376.9	38.0
United Air Lines	369.6	484.0	114.5	462.5	(477.0)	(939.5)
US Airways	321.5	325.0	3.5	536.7	703.9	167.2
System Cargo Majors	451.0	(21.0)	(472.0)	1,296.3	470.2	(826.1)
Atlas Air	26.5	6.4	(20.0)	90.6	85.1	(5.5)
Federal Express	110.4	(38.4)	(148.8)	785.3	314.2	(471.1)
United Parcel Service	314.2	11.0	(303.2)	420.4	70.9	(349.5)
System All Majors	1,168.7	2,126.8	958.1	1,031.4	3,414.1	2,382.7

1/ Delta Air Lines data has been retroactively adjusted to include Northwest.

2/ United Airlines data has been retroactively adjusted to include Continental.

3/ Southwest Airlines data has been retroactively adjusted to include AirTran.

e

**Comparison of Passenger Load Factors  
For Individual Passenger and All-Cargo System Majors  
Quarterly and 12-Month Ended Periods  
June 2012 and 2013**

<b>Passenger Load Factor (Percent)</b>						
<b>Group/Carrier</b>	<b>Quarterly Data</b>			<b>12 Month Ended Data</b>		
	<b>6/2012</b>	<b>6/2013</b>	<b>Pt.Chg.</b>	<b>6/2012</b>	<b>6/2013</b>	<b>Pt.Chg.</b>
System Passenger Majors	84.7	84.6	(0.1)	83.0	83.6	0.5
Alaska Airlines	87.4	86.9	(0.5)	86.5	86.5	0.1
American Airlines	85.1	84.8	(0.3)	82.8	83.2	0.3
American Eagle Airlines	78.3	77.1	(1.2)	75.3	75.3	0.0
Delta Air Lines	85.8	85.7	(0.1)	84.2	85.1	0.9
Frontier Airlines	90.8	91.4	0.6	88.7	90.5	1.7
Hawaiian Airlines	84.1	80.8	(3.3)	84.3	81.8	(2.5)
JetBlue Airways	85.3	84.9	(0.4)	83.8	83.9	0.1
SkyWest Airlines	83.4	82.9	(0.5)	81.0	82.5	1.5
Southwest Airlines	81.7	81.5	(0.2)	80.4	80.2	(0.2)
United Air Lines	84.7	85.0	0.2	83.0	83.8	0.8
US Airways	84.6	86.1	1.4	83.8	85.2	1.4
System All Majors	84.7	84.6	(0.1)	83.0	83.6	0.5

1/ Delta Air Lines data has been retroactively adjusted to include Northwest.

2/ United Airlines data has been retroactively adjusted to include Continental.

3/ Southwest Airlines data has been retroactively adjusted to include AirTran.

**Comparison of Scheduled Passenger Yields (Cents)**  
**For Individual Passenger and All-Cargo System Majors**  
**Quarterly and 12-Month Ended Periods**  
**June 2012 and 2013**

Group/Carrier	Quarterly Data			12 Month Ended Data		
	6/2012	6/2013	Pct.Chg.	6/2012	6/2013	Pct.Chg.
System Passenger Majors	14.98	14.58	(2.7)	14.54	14.41	(0.9)
Alaska Airlines	13.87	13.37	(3.6)	13.46	13.38	(0.6)
American Airlines	14.84	14.87	0.2	14.67	14.85	1.3
American Eagle Airlines	10.39	10.87	4.6	16.23	11.15	(31.3)
Delta Air Lines	14.61	14.73	0.8	14.32	14.60	2.0
Frontier Airlines	11.93	12.31	3.2	12.47	12.02	(3.6)
Hawaiian Airlines	14.98	14.11	(5.8)	15.04	14.01	(6.9)
JetBlue Airways	13.78	13.40	(2.8)	13.53	13.49	(0.3)
SkyWest Airlines	13.89	11.67	(16.0)	14.22	12.17	(14.4)
Southwest Airlines	18.67	18.31	(1.9)	15.70	18.11	15.3
United Air Lines	14.64	14.57	(0.5)	14.49	14.39	(0.7)
US Airways	14.72	14.54	(1.3)	14.20	13.99	(1.5)

1/ Delta Air Lines data has been retroactively adjusted to include Northwest.

2/ United Airlines data has been retroactively adjusted to include Continental.

3/ Southwest Airlines data has been retroactively adjusted to include AirTran.

**Comparison of Operating Profit Margin (Percent)  
For Individual Passenger and All-Cargo System Majors  
Quarterly and 12-Month Ended Periods  
June 2012 and 2013**

<b>Operating Profit Margin (Percent)</b>						
<b>Group/Carrier</b>	<b>Quarterly Data</b>			<b>12 Month Ended Data</b>		
	<b>6/2012</b>	<b>6/2013</b>	<b>Pt. Chg</b>	<b>6/2012</b>	<b>6/2013</b>	<b>Pt. Chg.</b>
<b>System Passenger Majors</b>	6.1	9.0	2.9	4.0	4.7	0.7
Alaska Airlines	15.8	15.1	(0.7)	11.8	12.5	0.7
American Airlines	1.9	7.4	5.5	(3.1)	2.2	5.3
American Eagle Airlines	9.0	4.2	(4.9)	5.4	5.4	(0.0)
Delta Air Lines	3.8	9.8	6.0	6.7	8.7	2.0
Frontier Airlines	4.2	4.4	0.3	(1.5)	2.2	3.7
Hawaiian Airlines	6.3	7.4	1.1	7.9	5.6	(2.3)
JetBlue Airways	9.4	7.0	(2.4)	8.2	6.0	(2.1)
SkyWest Airlines	8.2	11.0	2.9	5.8	9.6	3.9
Southwest Airlines	10.0	9.3	(0.6)	5.0	3.7	(1.3)
United Air Lines	5.9	7.7	1.8	3.4	0.7	(2.7)
US Airways	10.3	12.1	1.8	5.3	6.6	1.3
<b>System Cargo Majors</b>	11.3	2.3	(9.0)	7.1	3.6	(3.5)
Atlas Air	13.2	8.3	(4.9)	12.1	12.7	0.6
Federal Express	5.0	1.0	(3.9)	5.3	2.5	(2.8)
United Parcel Service	53.1	6.5	(46.6)	13.9	5.8	(8.1)
<b>System All Majors</b>	6.9	7.8	0.9	4.5	4.5	(0.1)

1/ Delta Air Lines data has been retroactively adjusted to include Northwest.

2/ United Airlines data has been retroactively adjusted to include Continental.

3/ Southwest Airlines data has been retroactively adjusted to include AirTran.

**Comparison of Debt-to-Investment and Total Debt  
For Individual Passenger and All-Cargo System Majors  
Quarterly and 12-Month Ended Periods  
June 2012 and 2013**

Group/Carrier	Debt To Investment (Percent)			Total Debt (\$Billions)		
	Quarterly Data			Quarterly Data		
	6/2012	6/2013	Pt.Chg.	6/2012	6/2013	\$ Chg.
System Passenger Majors	87.7	85.6	(2.1)	44.9	47.0	2.1
Alaska Airlines	38.3	27.8	(10.4)	0.8	0.6	(0.2)
American Airlines	(331.2)	(2,496.3)	(2,165.2)	8.4	9.7	1.3
American Eagle Airlines	0.1	0.6	0.5	0.0	0.0	0.0
Delta Air Lines	86.2	85.2	(1.1)	12.5	12.2	(0.3)
Frontier Airlines	61.3	39.4	(21.9)	0.2	0.1	(0.0)
Hawaiian Airlines	79.2	79.3	0.1	0.7	0.7	0.1
JetBlue Airways	61.1	59.3	(1.8)	2.9	2.8	(0.1)
SkyWest Airlines	46.8	43.3	(3.5)	1.0	0.9	(0.1)
Southwest Airlines	32.4	30.2	(2.2)	3.3	2.9	(0.3)
United Air Lines	84.0	86.8	2.8	12.0	11.8	(0.3)
US Airways	69.4	71.4	2.0	3.1	5.1	2.1
System Cargo Majors	20.3	18.9	(1.3)	3.3	3.2	(0.2)
Atlas Air	60.4	70.5	10.1	1.0	1.7	0.7
Federal Express	4.0	2.7	(1.3)	0.4	0.2	(0.1)
United Parcel Service	33.6	23.7	(9.9)	2.0	1.3	(0.8)
System All Majors	71.3	70.0	(1.3)	48.2	50.1	1.9

1/ Delta Air Lines data has been retroactively adjusted to include Northwest.

2/ United Airlines data has been retroactively adjusted to include Continental.

3/ Southwest Airlines data has been retroactively adjusted to include AirTran.



## FOOTNOTES

- \* Not calculated on a quarterly basis.
- \*\* Cannot be calculated because balance sheet data not presented on an entity basis.  
Data presented only on a system basis.
- ++ Not calculated for all-cargo carriers.
- # Meaningful calculation cannot be made because of negative data.
- & Over +/- 500 percent.

EXPLANATION OF LINE ITEMS

LINE #	DESCRIPTION OF LINE ITEM	DERIVATION OF LINE ITEM
1	Operating Revenues	Operating Revenues (Account 4999)
2	Operating Expenses	Operating Expenses (Account 7199)
3	Operating Profit or Loss	Operating Profit (Account 7999)
4	Net Income or Loss	Net Income (Account 9899)
5	Overall Revenue Ton-miles	Overall Revenue Ton-miles (Item Z-240)
6	Overall Available Ton-miles	Overall Available Ton-miles (Item Z-280)
7	Revenue Passenger-Miles (Scheduled Service)	Total scheduled revenue passenger-miles (Item K-140)
8	Available Seat-Miles (Scheduled Service)	Total scheduled available seat-miles (Item K-280)
9	Operating revenue per revenue ton-mile	$\frac{\text{Operating revenues (Account 4999)}}{\text{Overall revenue ton-miles (Item Z-240)}}$
10	Operating expense per revenue ton-mile	$\frac{\text{Operating expenses (Account 7199)}}{\text{Overall revenue ton-miles (Item Z-240)}}$
11	Operating profit per revenue ton-mile	$\frac{\text{Operating profit (Account 7999)}}{\text{Overall revenue ton-miles (Item Z-240)}}$
12	Operating expense per available ton-mile	$\frac{\text{Operating expenses (Account 7199)}}{\text{Overall available ton-miles (Item Z-280)}}$
13	Passenger revenue per revenue passenger-mile (scheduled service)	$\frac{\text{Passenger revenues (scheduled service) (Account 3901)}}{\text{Total revenue passenger-miles (scheduled service) (Item K-140)}}$
14	Operating revenues to total investment	$\frac{\text{Operating revenue (Account 4999)}}{\text{Total investment (See line 20)}}$
15	Times interest earned	$\frac{\text{Income Before income taxes (Account 8999) + interest on long-term debt and capital leases (Account 8181) + Other interest expense (Account 8182)}}{\text{Interest on long-term debt and capital leases (Account 8181) + Other interest expense (Account 8182)}}$
16	Current assets to current liabilities	$\frac{\text{Current assets (Account 1499)}}{\text{Current liabilities (Account 2199)}}$
17	Number of days coverage of cash operating expenses	$\frac{\text{Cash (Account 1010) + short-term investments (Account 1100)}}{[\text{Total operating expenses (Account 7199) less depreciation and amortization (Account 7000)}] / 365}$
18	Operating Profit to operating revenues	$\frac{\text{Operating profit (Account 7999)}}{\text{Operating revenues (Account 4999)}}$
19	Net income to stockholders' equity	$\frac{\text{Net income (Account 9999)}}{\text{Stockholders' equity (Account 2995) (5 Quarter average)}}$

EXPLANATION OF LINE ITEMS

LINE #	DESCRIPTION OF LINE ITEM	DERIVATION OF LINE ITEM
20	Overall corporate rate of return	<p>Net income plus interest expense</p> <hr/> <p>Total investment</p> <p>Net income plus interest expense is:  Net income (Account 9899) + interest on long-term debt and capital leases (Account 8181) + other interest expense (Account 8182) + amortization of debt discount, premium and expense (Account 8184).</p> <p>Total investment is:  Current maturities of long-term debt (Account 2000) + current obligations under capital leases (Account 2080) + long-term debt (Account 2210) + advances from associated companies (Account 2240) + noncurrent obligations under capital leases (Account 2280) + stockholders' equity (Account 2995) - unamortized debt expense (Account 1840). (A five-quarter average is used).</p>
21	Debt to total investment (end of period)	<p>Current maturities of long-term debt (Account 2000) + current obligations under capital leases (Account 2080) + long-term debt (Account 2210) + advances from associated companies (Account 2240) + noncurrent obligations under capital leases (Account 2280) - unamortized debt expense (Account 1840)</p> <hr/> <p>Total investment (See line 20)</p>
22	Actual passenger load factor (scheduled service)	<p>Revenue passenger-miles (scheduled service (Item K-140)</p> <hr/> <p>Available seat-miles (scheduled service (Item K-280)</p>
23	Operating breakeven load factor (scheduled service)	<p>Capacity operating expense, scheduled service (passenger)</p> <hr/> <p>[Scheduled passenger revenue (Account 3901) - Traffic operating expense, passenger scheduled service] / Actual passenger load factor, scheduled service</p>
24	Difference, actual-breakeven load factor	<p>Actual (Line 22) - Breakeven (Line 23)</p>
25	Employees	<p>Sum of full time and one-half part time employees(Average for 12-month ended period)</p>
26	Overall revenue ton-miles per employee	<p>Overall revenue ton-miles (Item Z-240)</p> <hr/> <p>Average # of employees (See Line 25)</p>