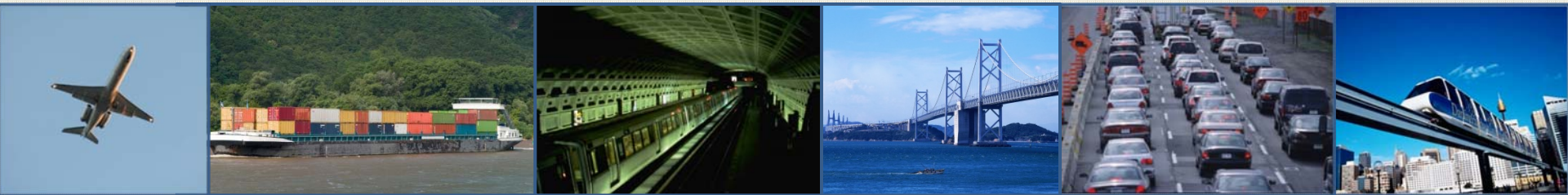


Women in Transportation in the Asia-Pacific Economic Cooperation (APEC) Economies

Initial Survey of Data and Trends

December 14, 2012



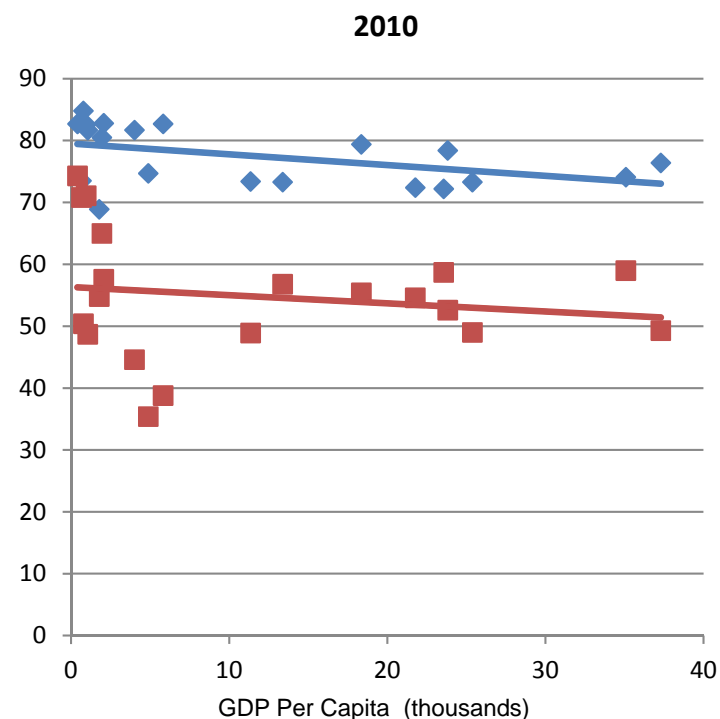
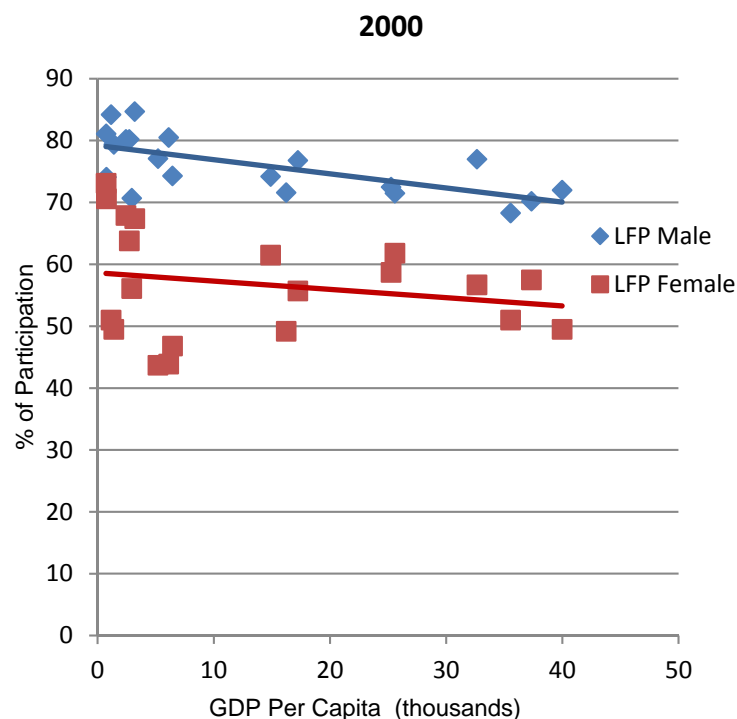
Disclaimers

This presentation has been prepared under Order No. DTOS59-12-P-00105 by Strategic Consulting Partners and DevTech Systems, Inc. for review by the Department of Transportation

The findings and data expressed in this presentation do not necessarily reflect the views of the Department of Transportation, the United States Government, or APEC.

Introduction to Women's Participation in the Labor Force in APEC Economies

Labor Force Participation for APEC economies (% of Working Age) and GDP per capita (constant 2000 US\$)



Source: World Bank (2012)

Women's Participation in the Transportation Labor Force Relative to Overall Labor Force Participation, APEC Economies

Female Participation in the
Transportation Labor Force*
% of total transportation labor force

Female Participation in the Labor Force <i>% of Total Labor Force Participation (APEC Economies)</i>	Female Participation in the Transportation Labor Force*			
	<i>% of total transportation labor force</i>			
		Less than 15%	16-25%	26-34%
between 40-50%		Korea Malaysia Philippines	Chile Japan Mexico	
50% to 73%		Indonesia Peru	Australia Canada Papua New Guinea Singapore Thailand United States Vietnam	Hong Kong, China New Zealand

*Transportation labor force is defined differently by economy. Most readily available statistics include related sectors (postal, communications, and warehousing) | Complete data are unavailable for three member economies: Brunei, Russia, and China

Skilled (Non-Professional) Labor

General Trends: APEC Economies

Per Capita Income

High Income Economy

Singapore: women are only 8% of crafts/trades workforce

Lower Income Economies

Thailand: women are 28% of the craft/trade workforce

Vietnam: women are 35% of crafts

% of Transportation Labor Force that are Women

Above 25%

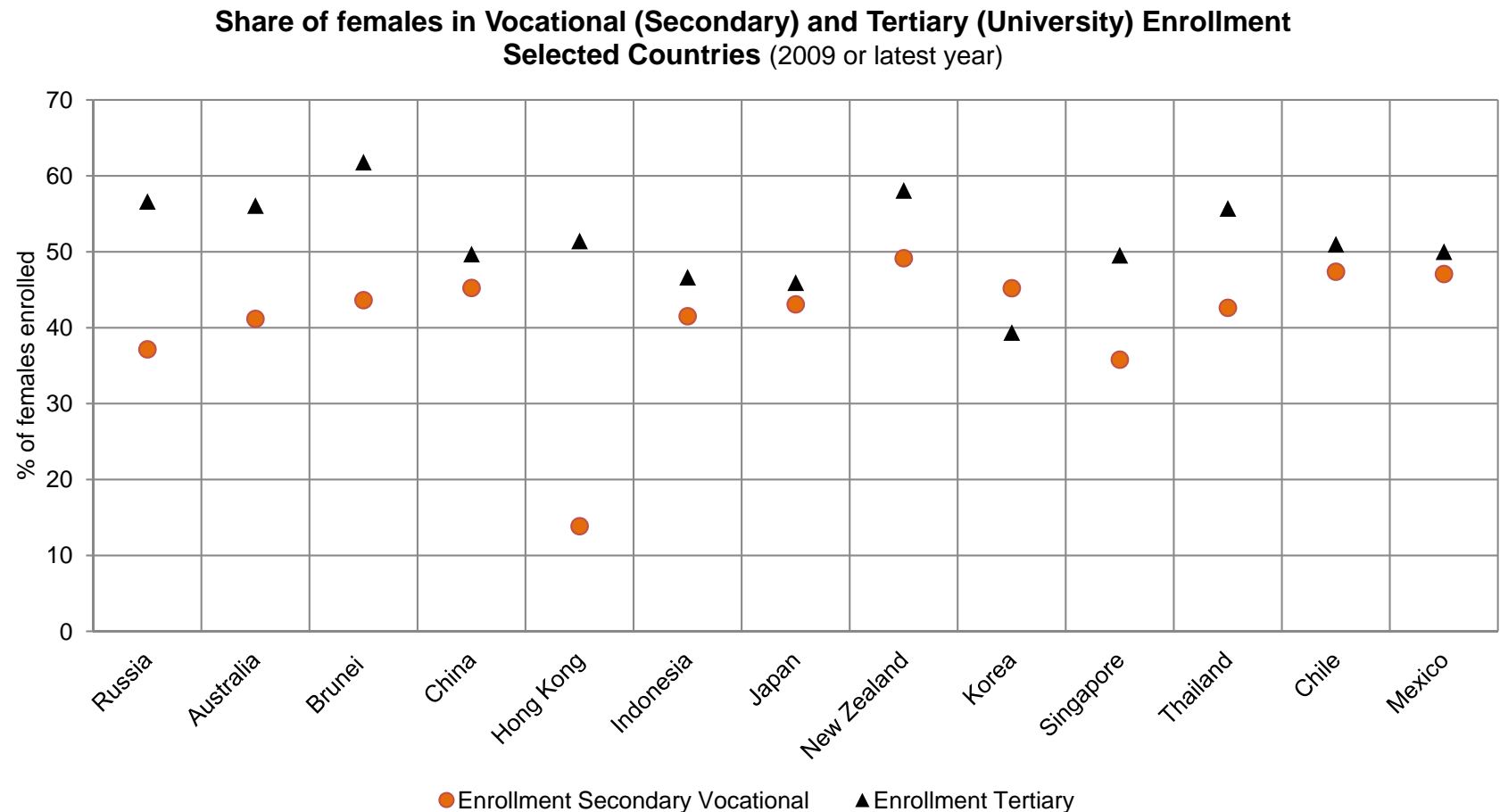
New Zealand: 20% of technicians or trade workers are women

16-25%

Australia: 10% of trade workers are women

Education/Skills Acquisition Data

General Trends: APEC Economies



Source: UNESCO Institute for Statistics, accessed December 4, 2012

Women's Management and Leadership

General Trends-APEC Economies

Australia

- 50% professionals
- 28% managers

Singapore

- 43% professionals
- 36% managers & administrators

New Zealand

- 54% professionals
- 33% managers

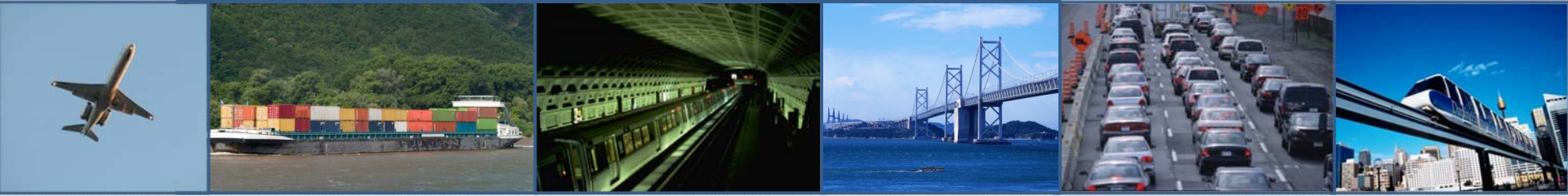
Thailand

- 60% professionals
- 28% managers (senior)

World Economic Forum Corporate Gender Gap Report 2010

	Canada	Japan	Mexico	US
<i>Barriers</i>	<i>Top Three Rankings</i>			
Lack of networks and mentoring	1			
Lack of role models	2	1		
Lack of opportunities for critical work experience & responsibility	3	3		
General norms and cultural practices in your country		2	1	2
Masculine/patriarchal corporate culture				1
Lack of adequate “re-entry” opportunities				3
Lack of adequate laws & regulations in your country			2	
Inadequate labor laws & regulations in your country			3	

Changing Workforce Dynamics in the Transportation Industry



- Globally, women's labor force participation is an important gender issue.
- Data that are sex-disaggregated related to workforce participation and leadership ***in the transportation sector*** are limited.

Transportation industry reports cite workforce and leadership development as critical issues for the next generation.

An opportunity to break down gender-based barriers