

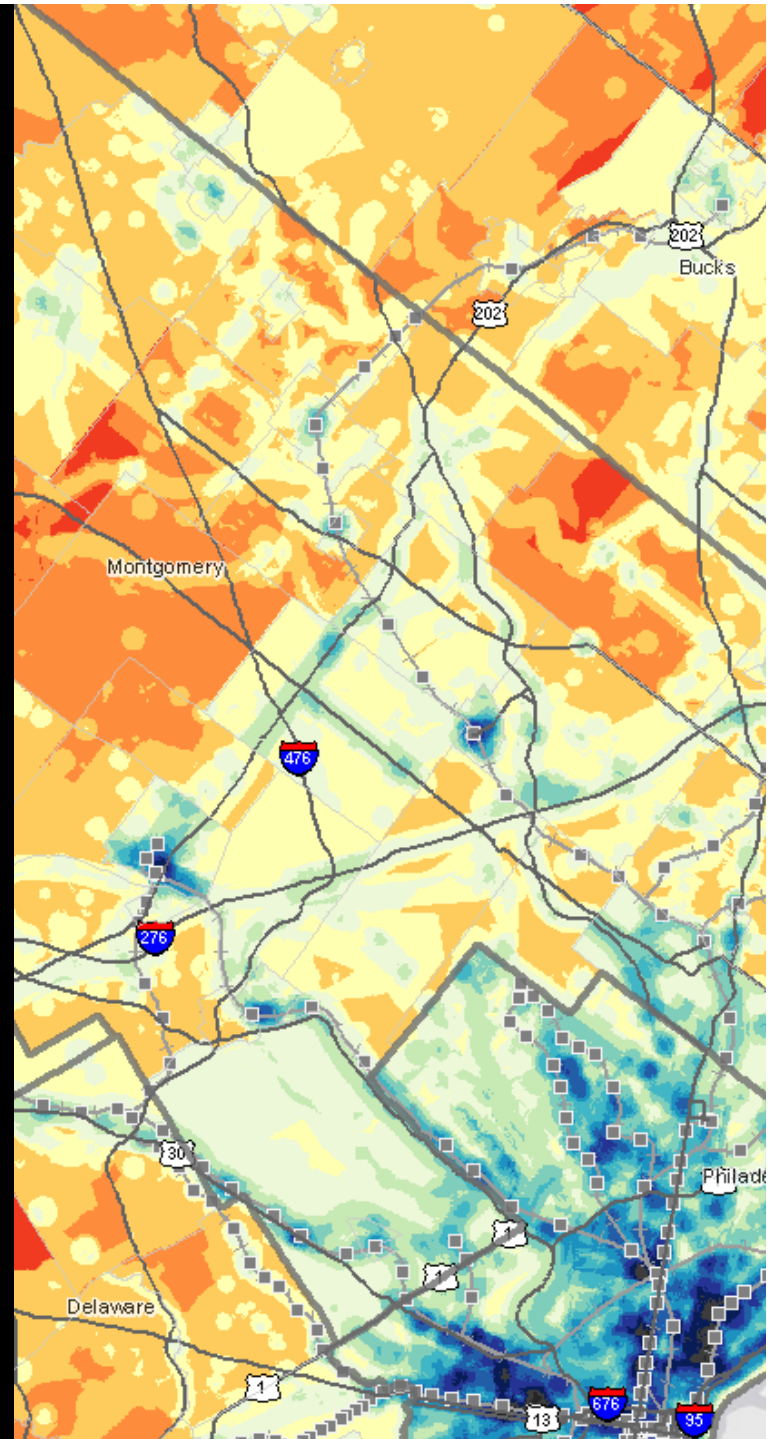
Access: From Aspiration to Information

Using planning tools to inform
thinking and priorities

Gregory R. Krykewycz, PP, AICP



USDOT Connectivity Executive Forum, April 27, 2015
Communicating Connectivity



Delaware Valley Regional Planning Commission (DVRPC)

- **Metropolitan Planning Organization (MPO)** for the bi-state, 9-county Philadelphia region
- **Home rule region:** 353 municipalities; land use power resides with local governments
 - Regional planning here involves more carrots than sticks: MPO as facilitator and consensus builder



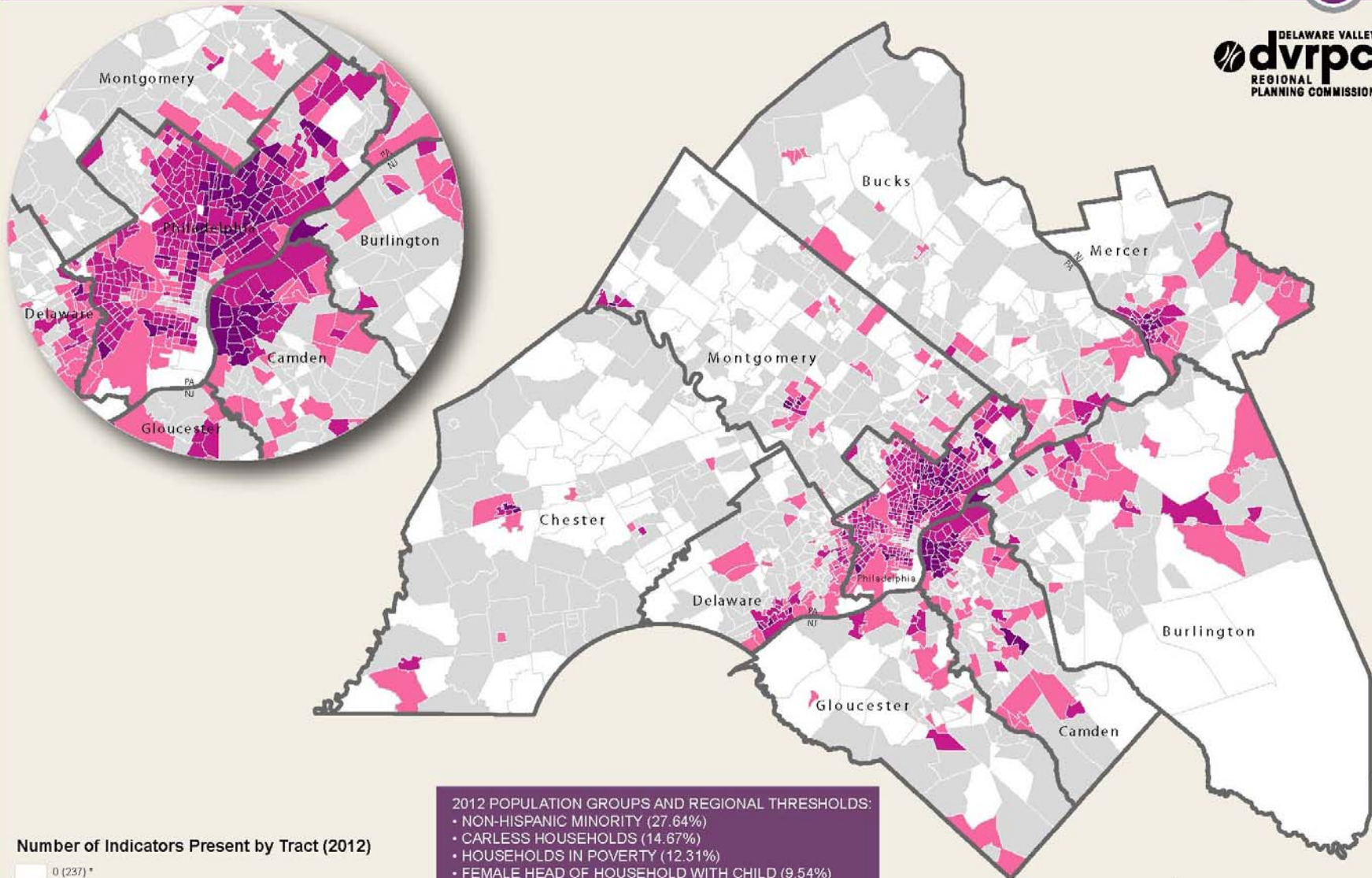
We develop many planning tools to encourage good thinking and practice



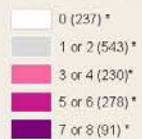
Indicators of Potential Disadvantage



DELAWARE VALLEY
dvrpc
REGIONAL
PLANNING COMMISSION



Number of Indicators Present by Tract (2012)



2012 POPULATION GROUPS AND REGIONAL THRESHOLDS:

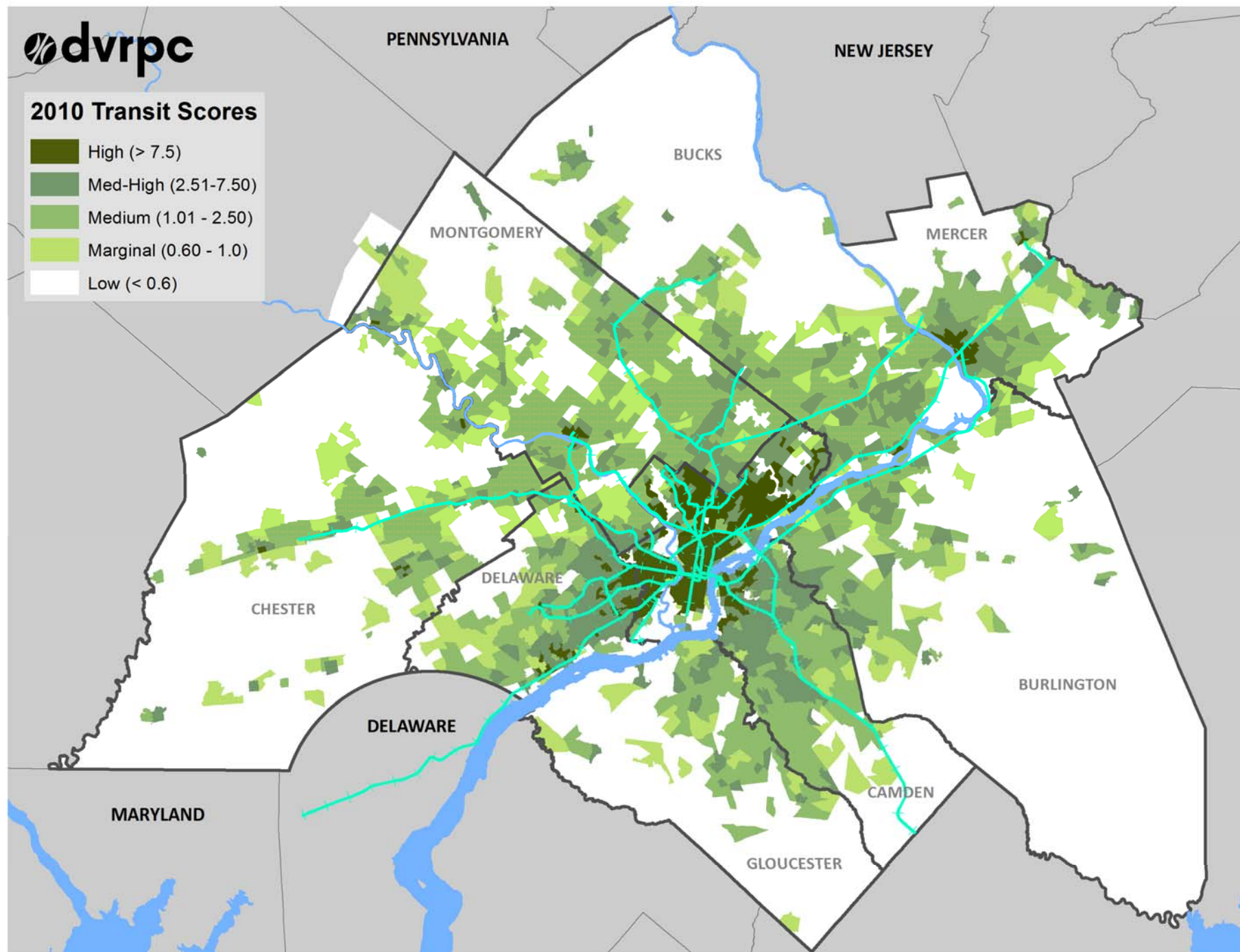
- NON-HISPANIC MINORITY (27.64%)
- CARELESS HOUSEHOLDS (14.67%)
- HOUSEHOLDS IN POVERTY (12.31%)
- FEMALE HEAD OF HOUSEHOLD WITH CHILD (9.54%)
- ELDERLY 75 YEARS AND OVER (6.5%)
- HISPANIC (8.33%)
- LIMITED ENGLISH PROFICIENCY (3.2%)
- PERSONS WITH PHYSICAL DISABILITIES (12.92%)



Sources: U.S. Census, DVRPC.

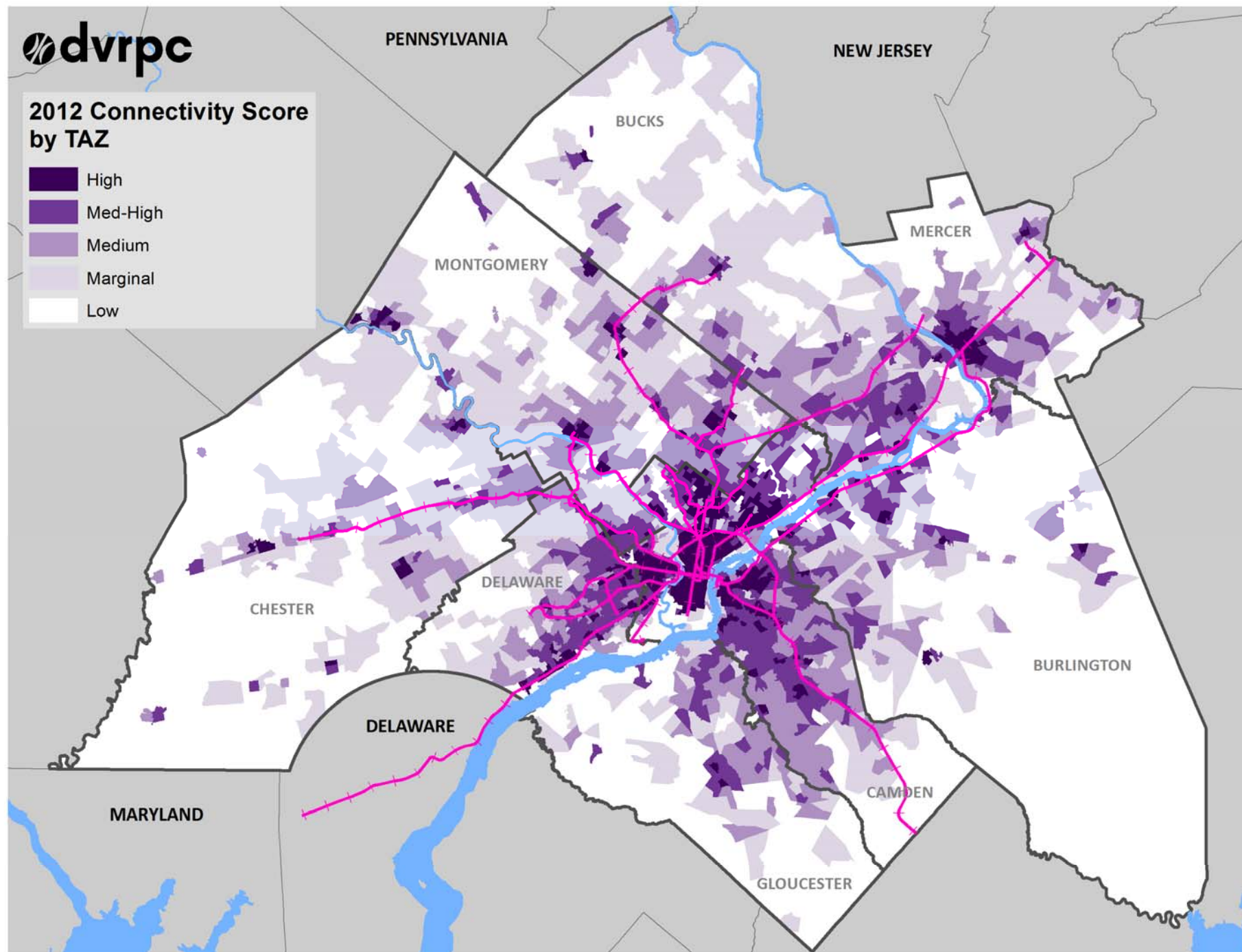
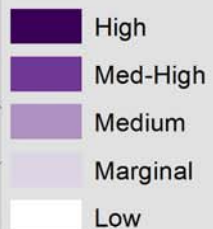


2010 Transit Scores





2012 Connectivity Score by TAZ



Standard Maps

Custom Maps

☒ ⓘ ci² Community Investment Index (CI²)

Low (8) High (75)

☐ ⓘ 🏠 Affordable & Accessible Housing

☐ ⓘ 💰 Community & Economic Development

☐ ⓘ 🌿 Environmental

☐ ⓘ 🚶 Livability-Supportive Transportation

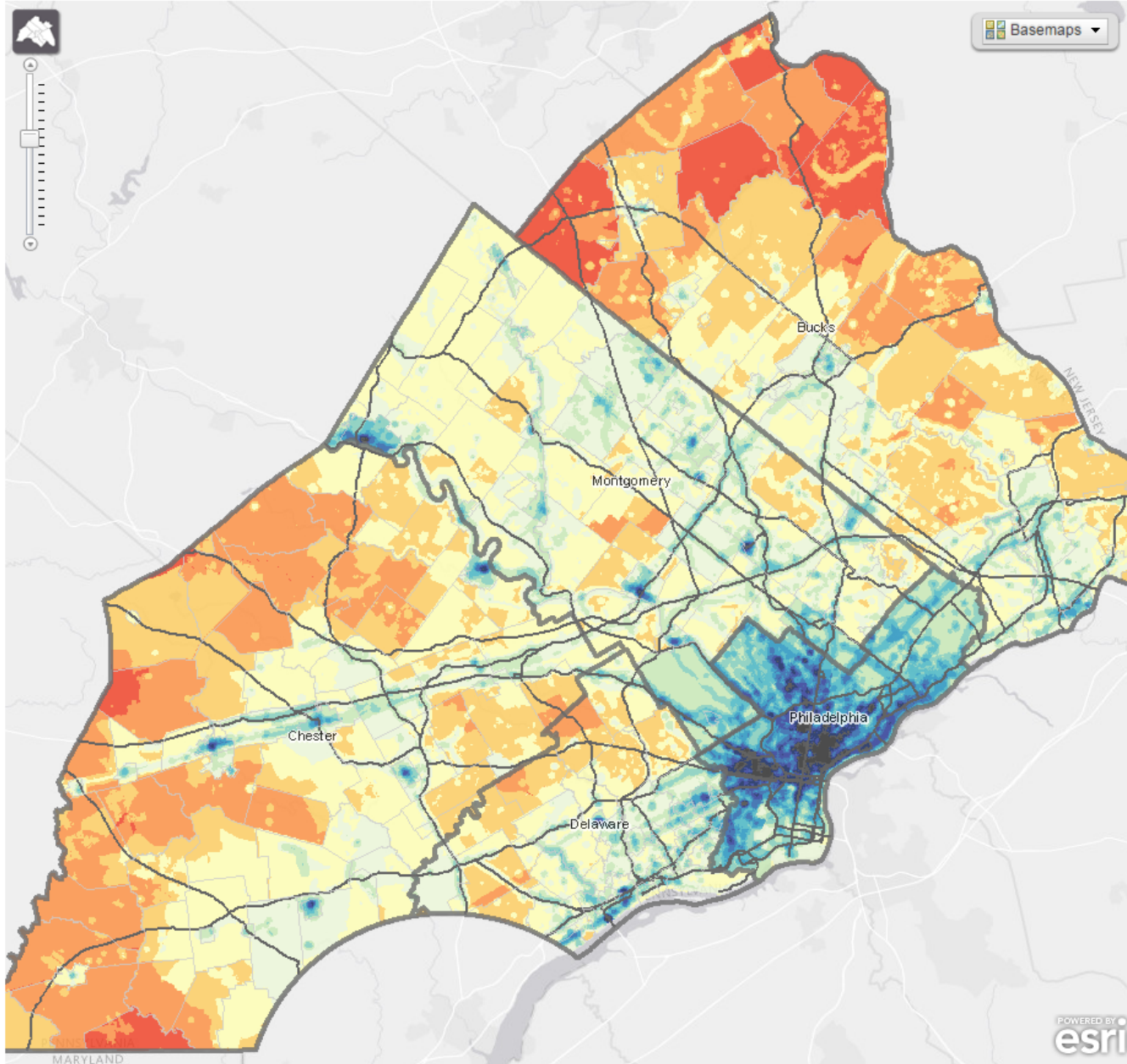
☐ ⓘ 🗺️ Planning Activities

☐ ⓘ 🏢 Regionally-Scaled Datasets

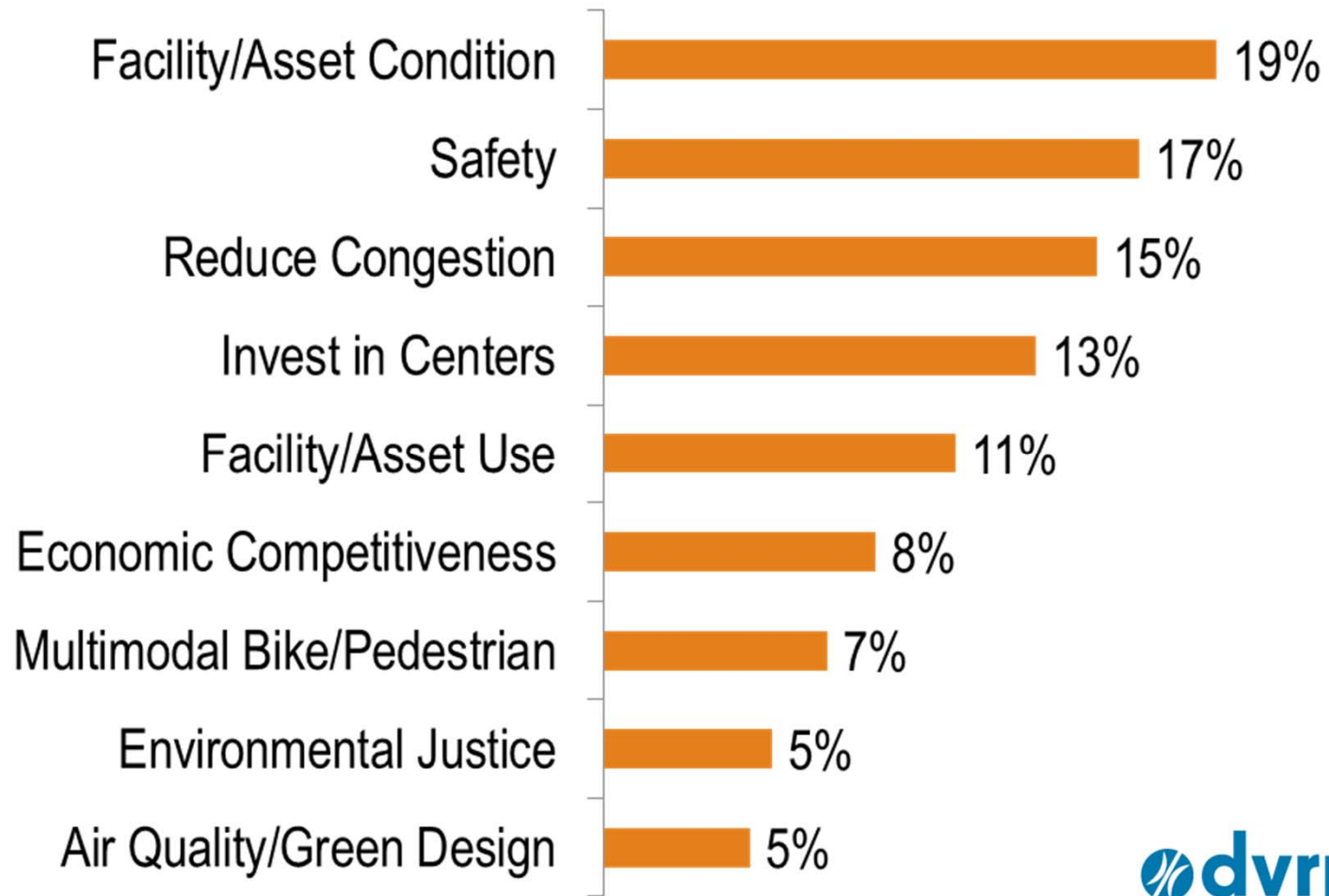
☐ ⓘ 🧑 Selected Local Partners & Incentives

☐ ⓘ 📍 Health

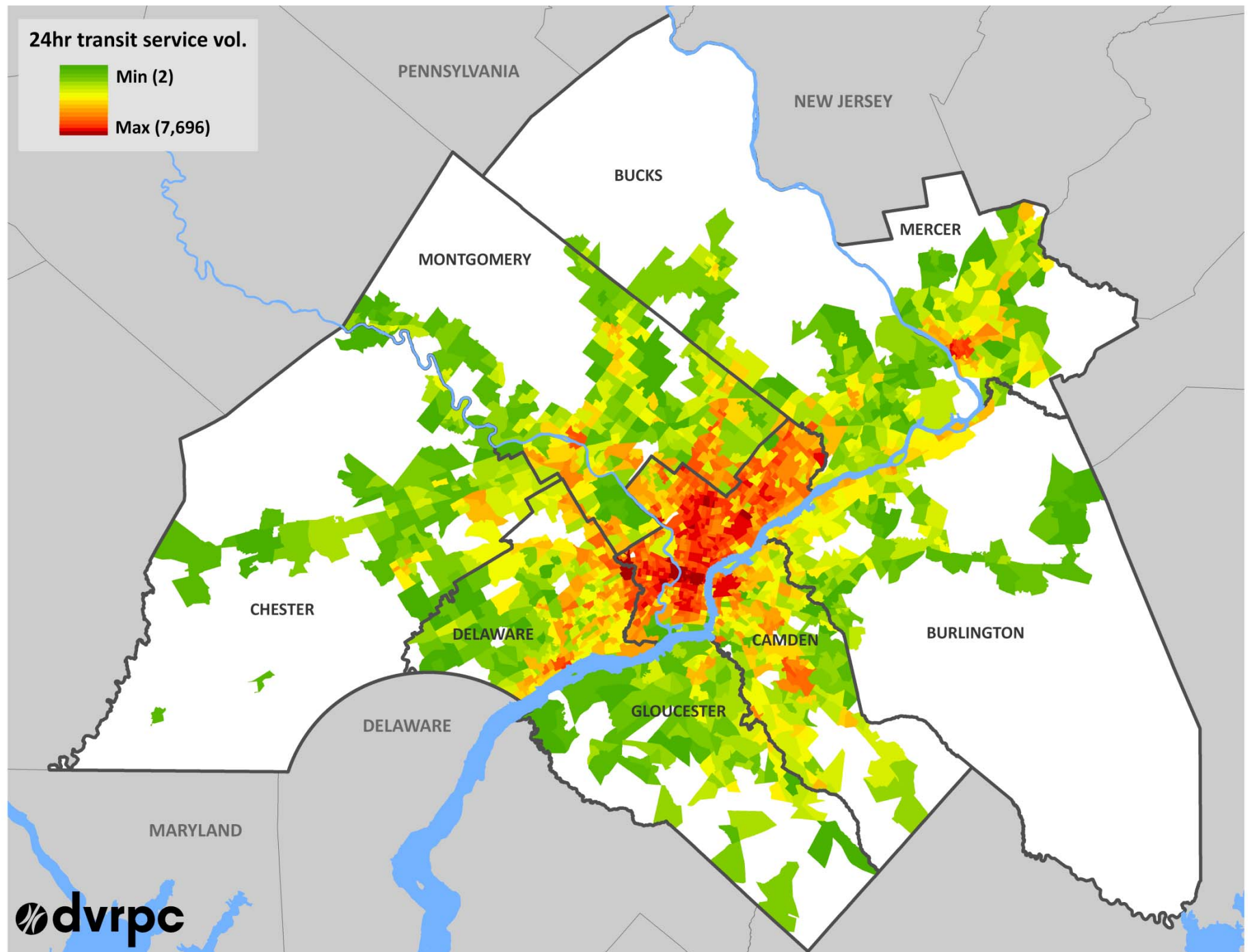
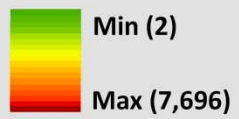
ci² Launch Community Investment Index Data Explorer



TIP Project Evaluation Criteria

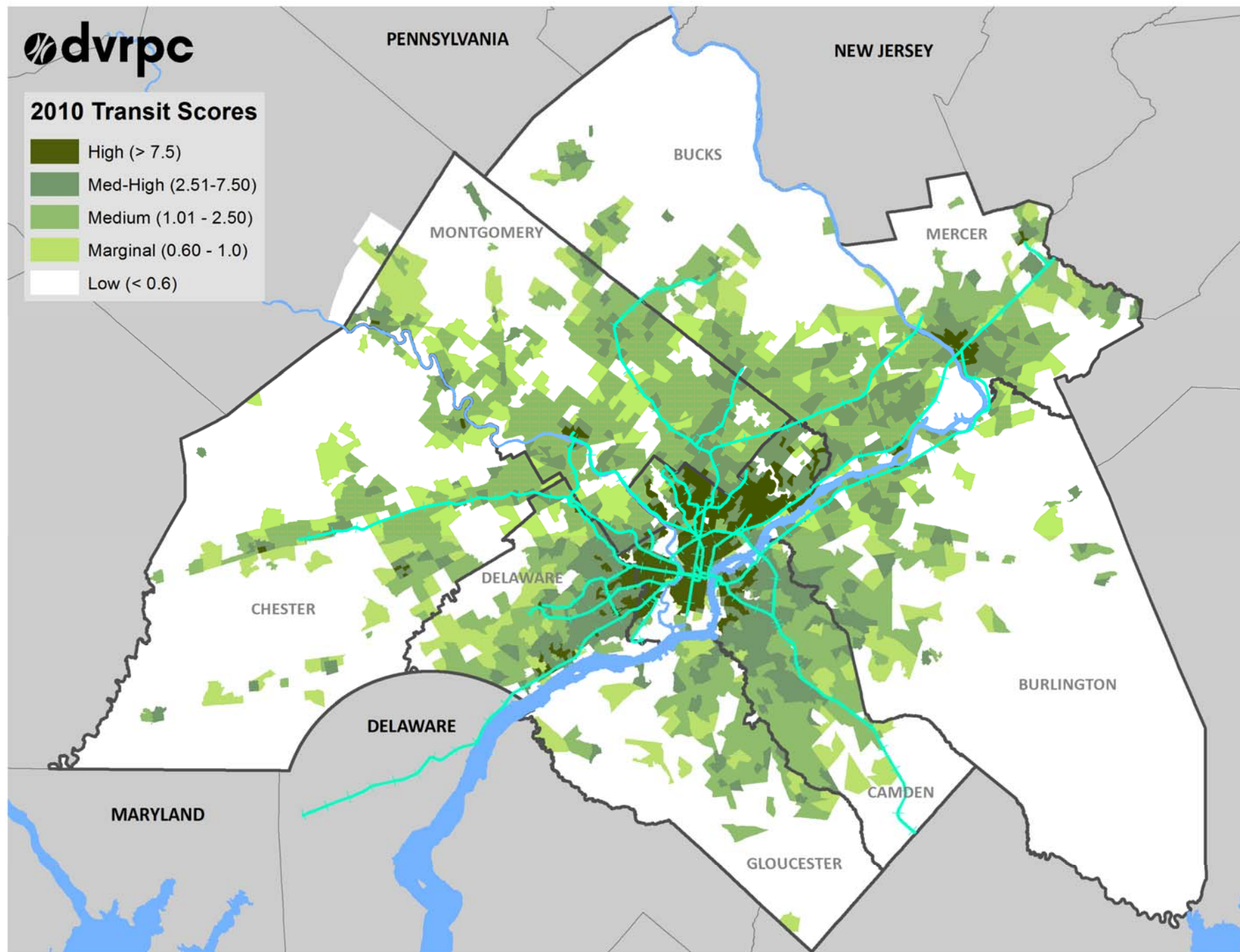


24hr transit service vol.






2010 Transit Scores



**TRANSIT SERVICE PROVIDED
vs.
TRANSIT SERVICE DEMANDED**

 Demand > Supply

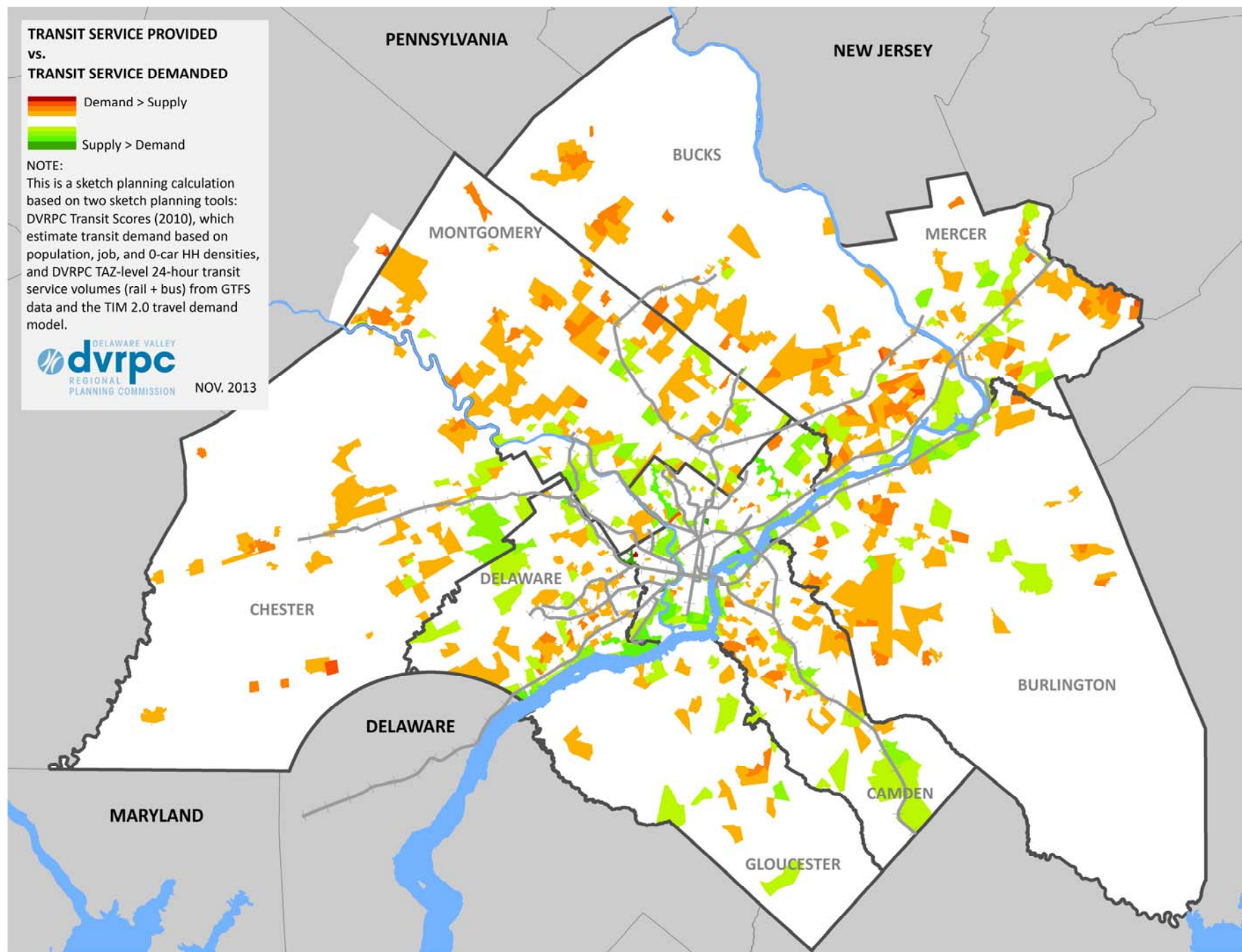
 Supply > Demand

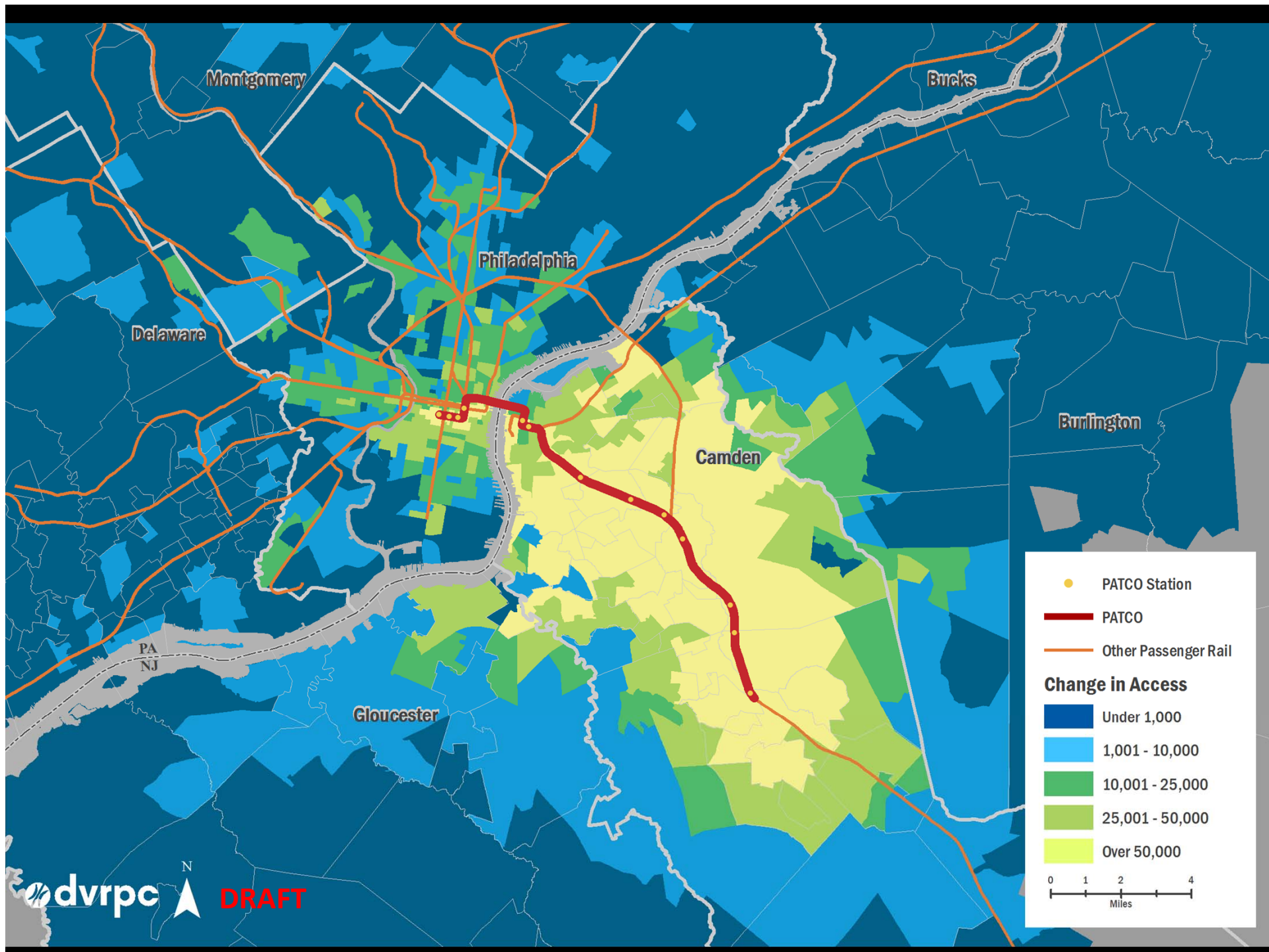
NOTE:

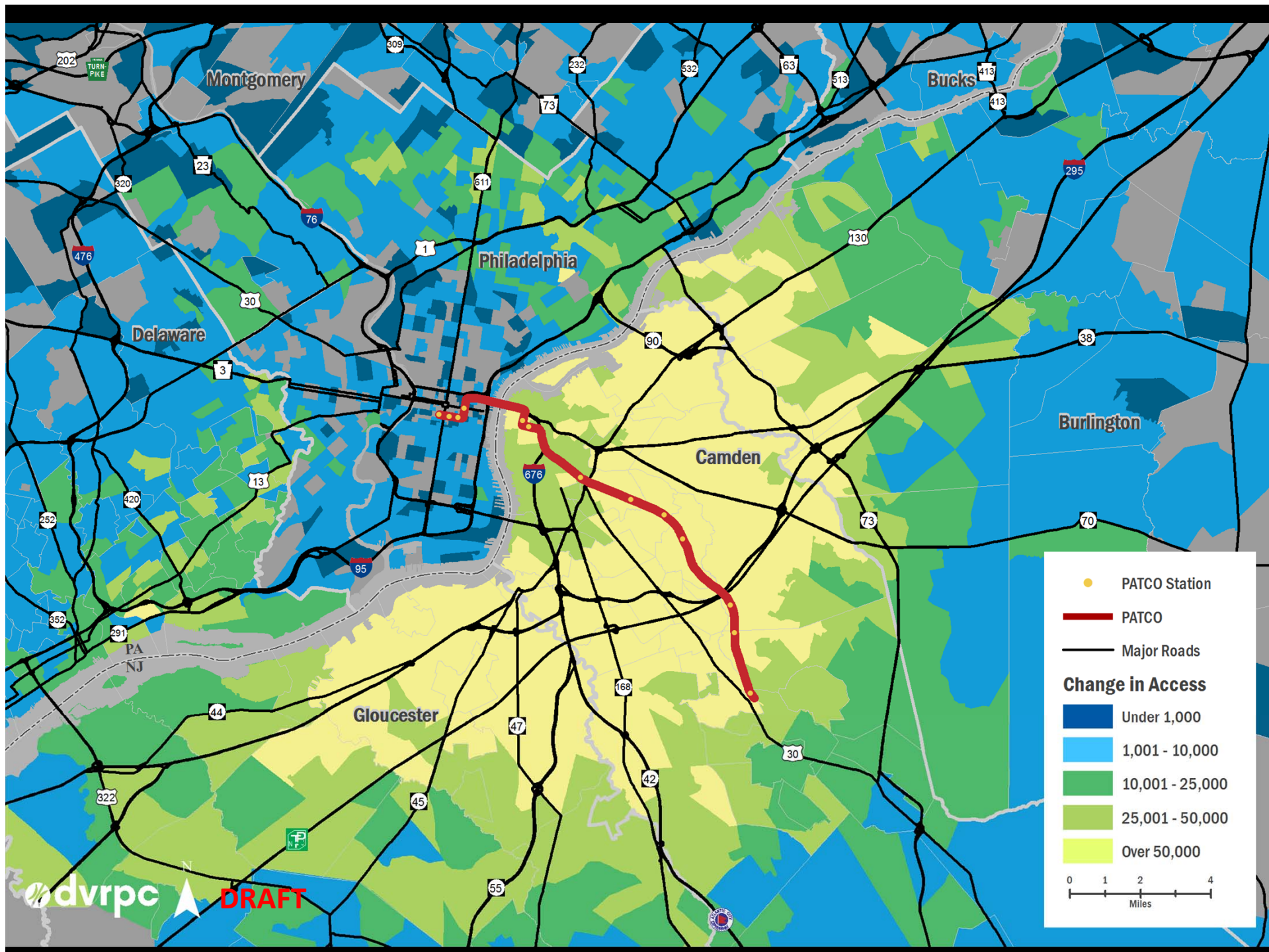
This is a sketch planning calculation based on two sketch planning tools: DVRPC Transit Scores (2010), which estimate transit demand based on population, job, and 0-car HH densities, and DVRPC TAZ-level 24-hour transit service volumes (rail + bus) from GTFS data and the TIM 2.0 travel demand model.



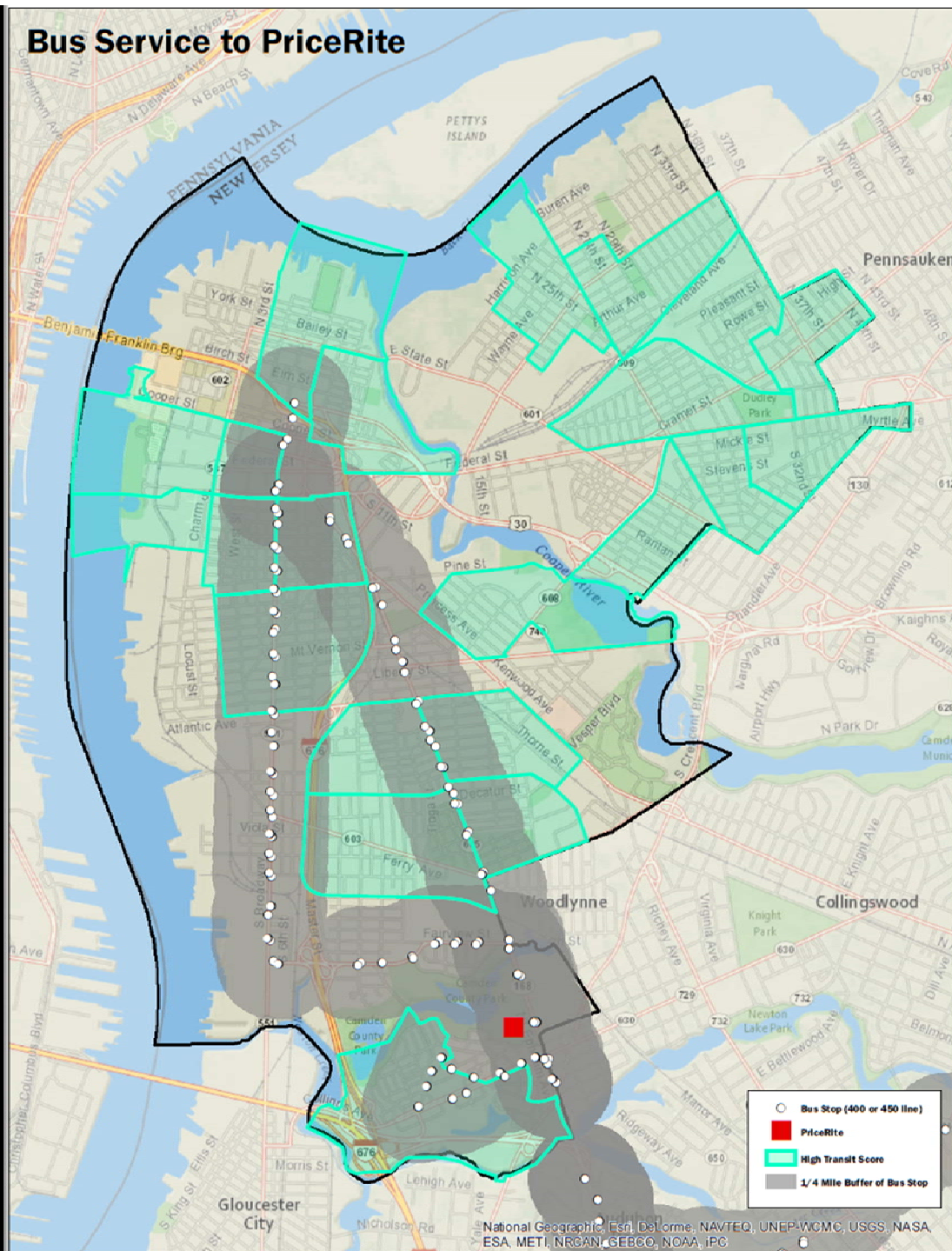
NOV. 2013







Bus Service to PriceRite







www.dvrpc.org/mapping/webmaps.htm

Access: From Aspiration to Information

Using planning tools to inform
thinking and priorities

Gregory R. Krykewycz, PP, AICP



USDOT Connectivity Executive Forum, April 27, 2015
Communicating Connectivity

