

Connectivity Measures: Putting Information to Work



John Orr
Atlanta Regional Commission

April 27, 2015

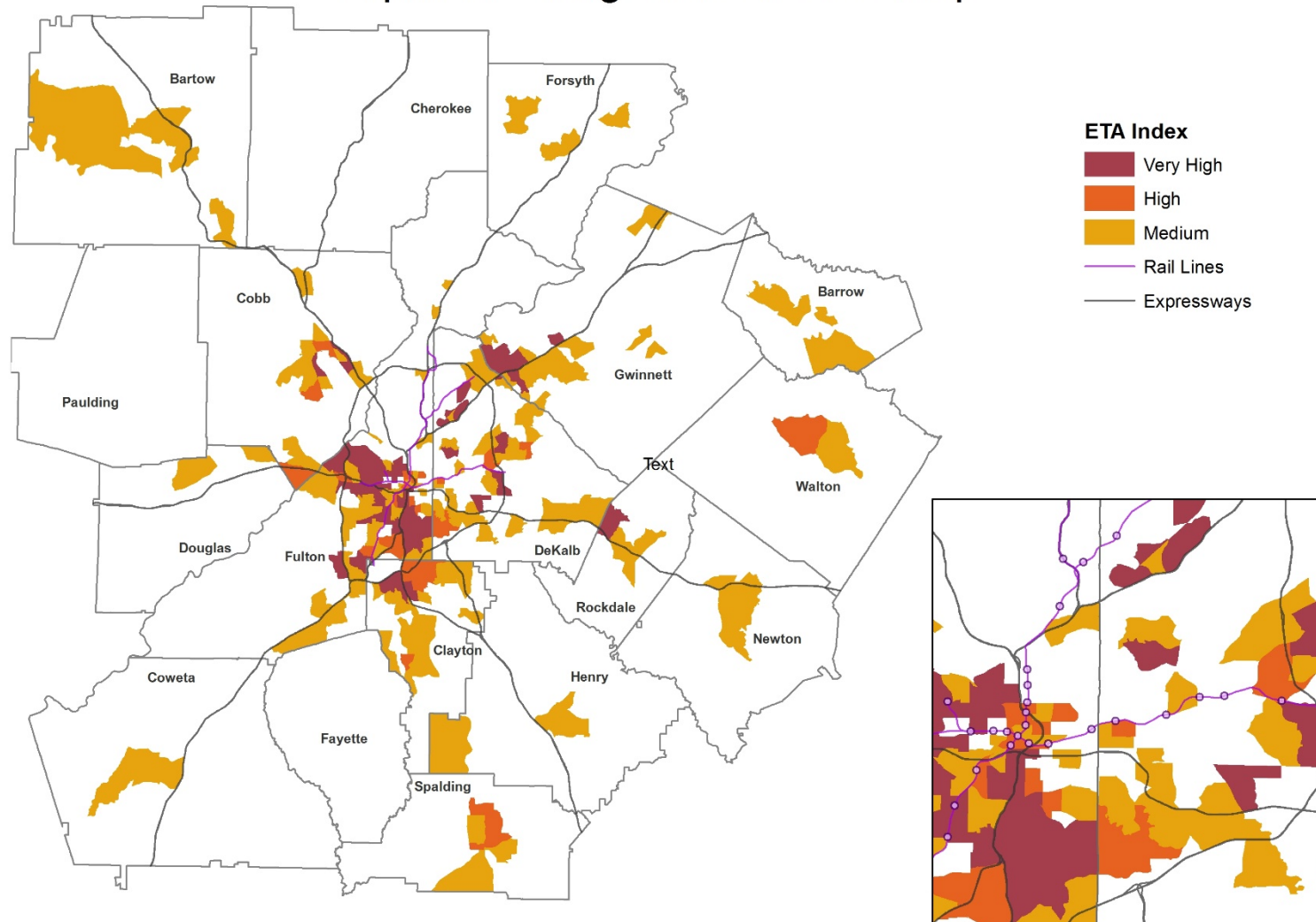
Step 1 - Collaboratively develop connectivity measures



ARC's primary variable is access to jobs, services, etc. within a travel time threshold (30, 45 minutes)

Step 2 - Identify communities with the most needs

Equitable Target Area Base Map



<http://atlantaregional.com/the-regional-plan>

ARC

ATLANTA REGIONAL COMMISSION

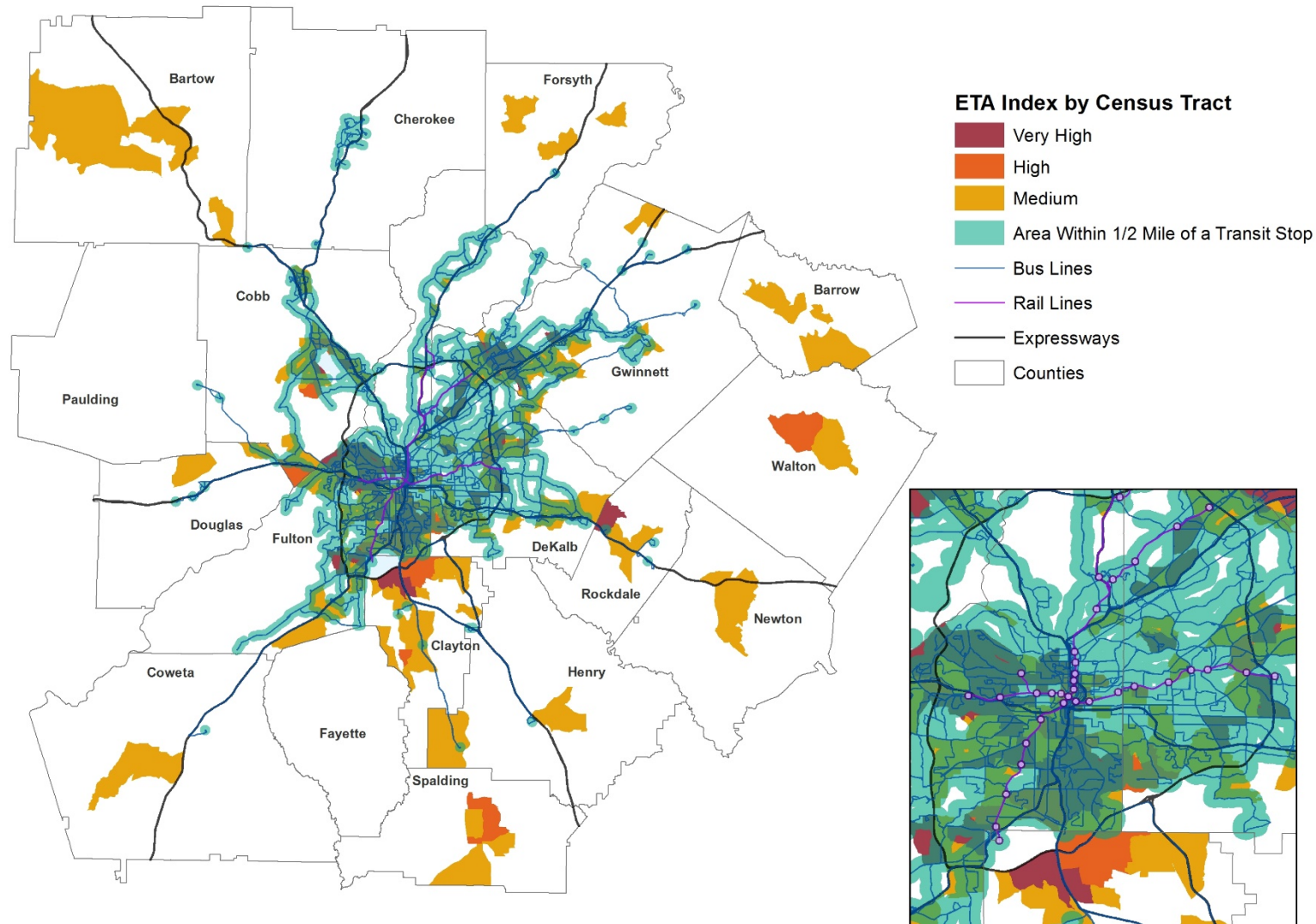
local relevance

+

regional impact

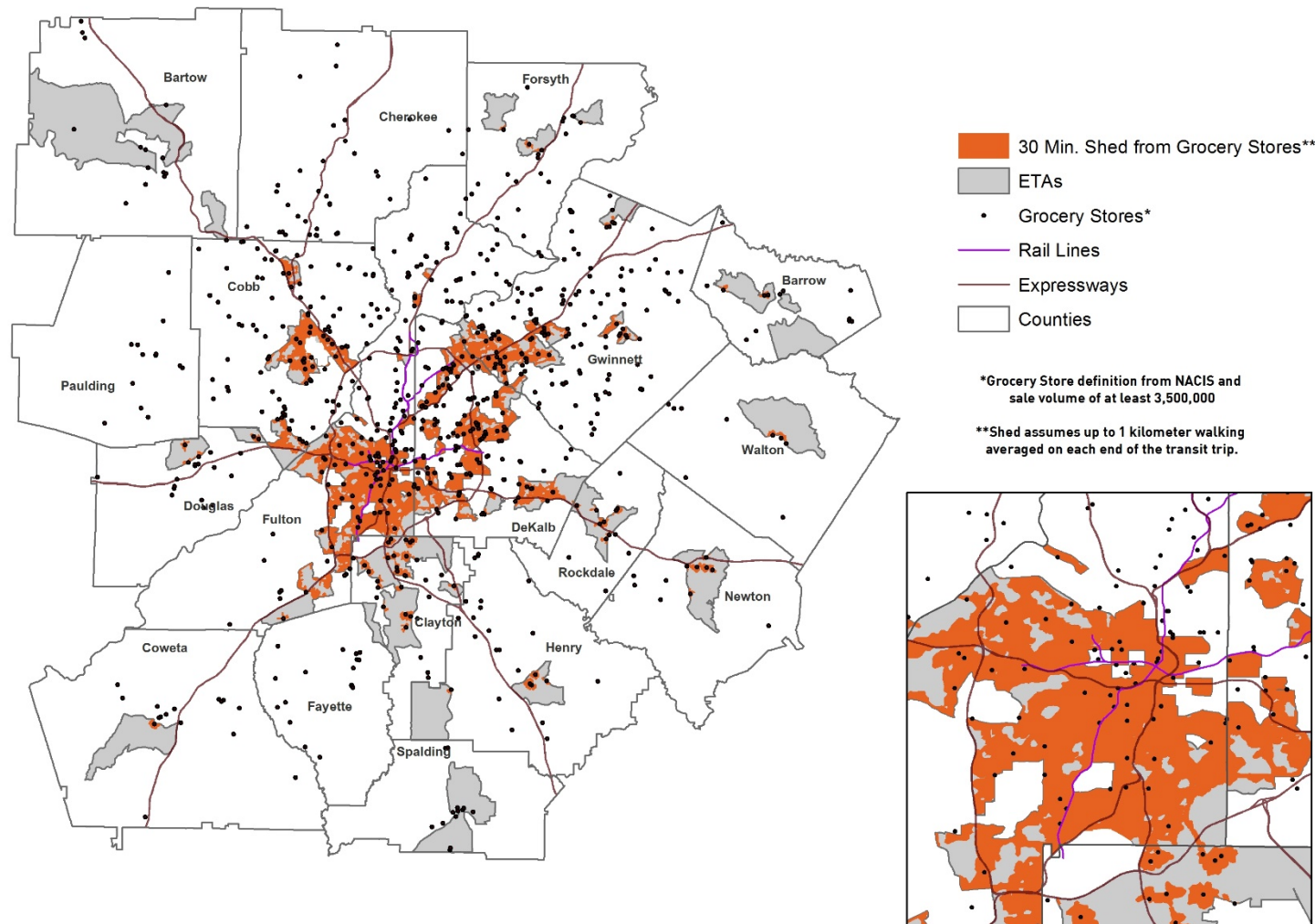
Step 3 - Assess if these communities have travel options

Equitable Target Areas Transit Accessibility

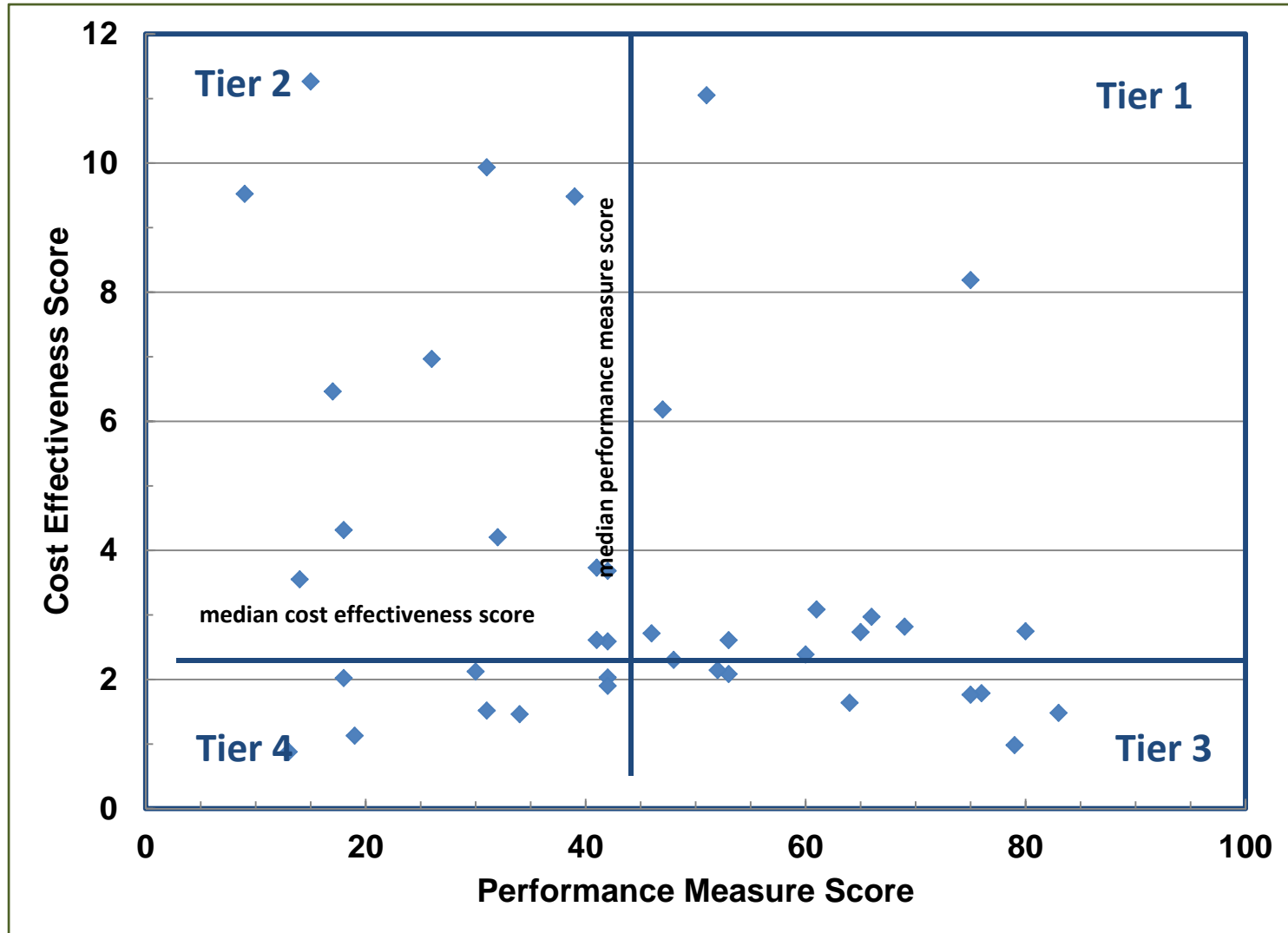


Step 4 - Determine if the transportation system provides access to quality of life resources

Grocery Store Walk and Transit Travel Sheds



Step 5 - Prioritize projects



<http://www.atlantaregional.com/the-regional-plan/get-informed>

Equitable Target Area Index (ETA)

The [Equitable Target Areas \(ETA\) index](#) is a tool the ARC uses to better understand complexities in communities of concern -high percentage of people living in poverty or high minority population - and how we can make wise decisions regarding investments.

This index is used to measure the impacts of investments and programs contained within The Region's Plan on ETAs. The ETA index is also used as input for project prioritization and evaluation, monitoring resource allocation, and assisting in decision-making.

During 2014 and 2015, ARC is convening a series of [Building Opportunity](#) workshops under the guidance of the Poverty, Equity, Opportunity Committee* to gather specific policy suggestions and feedback on the updated maps and methodology.

Actively engaged stakeholders included:

- Civic & non-profit leaders
- Locally elected officials
- Community members
- Universities

- [Equitable Target Area base map](#) (JPEG)
- [ETA 30 minute transit/walk shed - groceries](#) (JPEG)
- [ETA 60 minute transit/walk shed - grade schools](#) (JPEG)
- [ETA 60 minute transit/walk shed - higher education](#) (JPEG)
- [ETA 60 minute transit/walk shed - hospitals](#) (JPEG)
- [ETA 60 minute transit/walk shed - libraries](#) (JPEG)
- [ETA - park access](#) (JPEG)
- [ETA - transit access](#) (JPEG)

For
Additional
Information

John Orr

jorr@atlantaregional.com

404.463.3265