

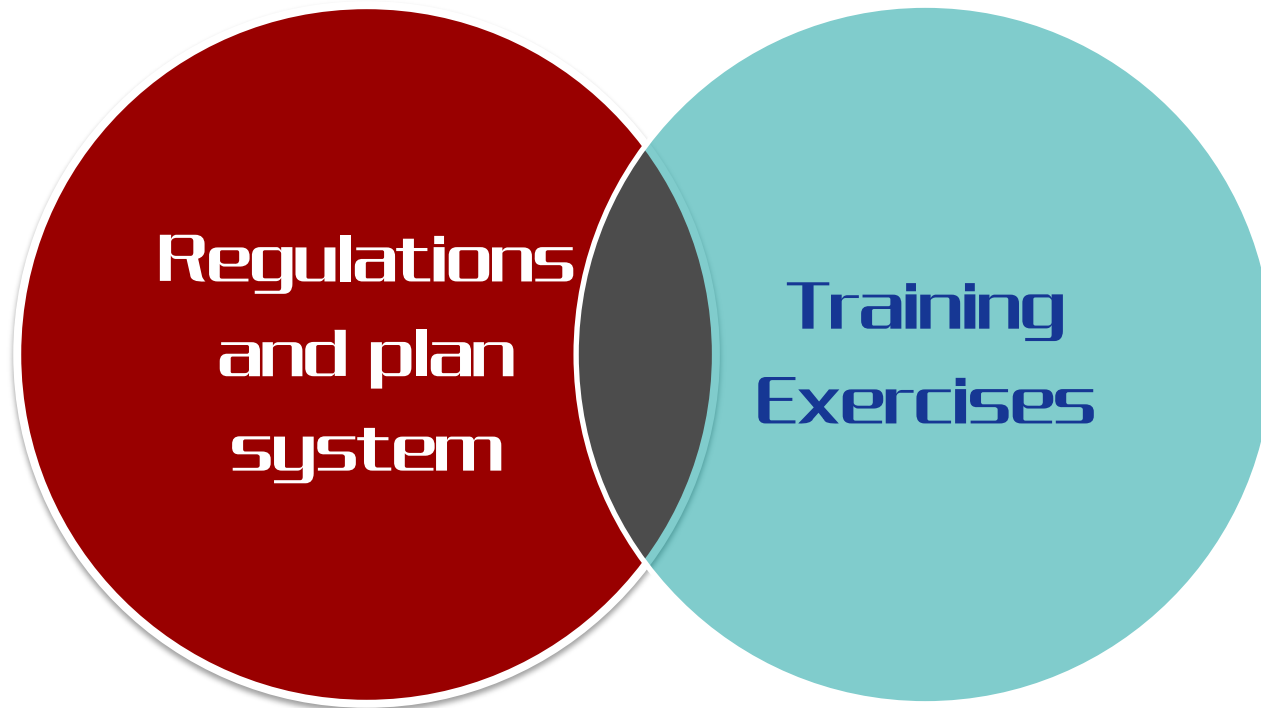


Construction and training exercises of transport emergency response plan system

Ministry of Transport

2009.12

Main content

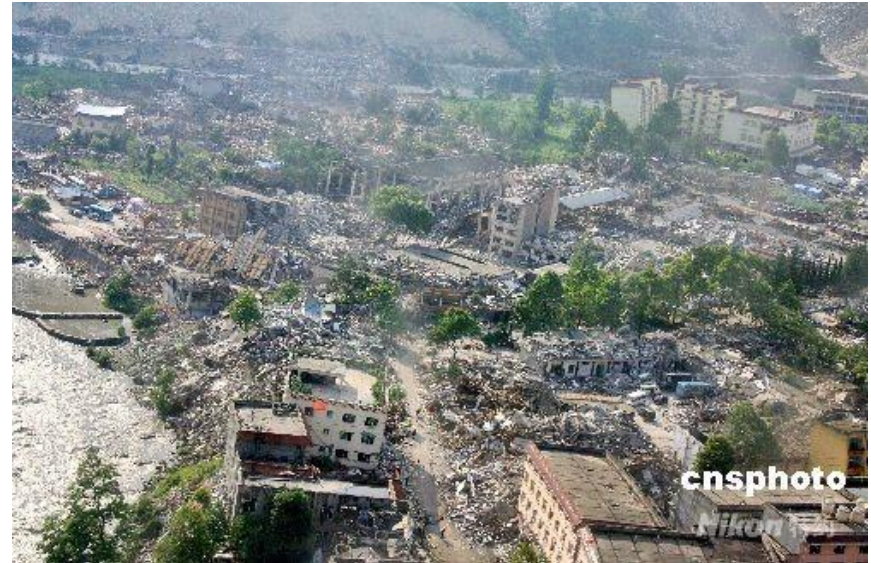


Classification of emergency laws and regulations of China



Natural disaster

- **Emergency Response Law of the People's Republic of China**
- **Welfare Donations Law of the People's Republic of China**
- **Water Law**
- **Flood Control Law**
- **Flood Control Regulation**
- **Regulation of Dam Safety Administration**
- **Interim Procedures for compensation for use of flood detention basin**
- **Law of the Peoples Republic of China on Meteorological Services**
- **Law of the Peoples Republic of China on Prevention and Control of Desertification**
- **Administrative Regulation on Weather Modification**
- **Regulation on the Army's Participation in Disaster Rescue**
- **Law of the People's Republic of China on Protecting Against and Mitigating Earthquake**



Accident disaster

- Law on Work Safety
- Labor Law
- Law of the People's Republic of China on the Coal Industry
- Construction Law
- Fire Prevention Law
- Regulations of Coal Mine Safety Supervision
- Regulations for the Implementation of the Law of the People's Republic of China on Safety in Mines
- Regulation on the Quality Management of Construction Projects
- Regulation on the Report, Investigation and Handling of Work Safety Accidents
- Regulation on the Safety and Protection of Radioisotopes and



Public health incident

Regulation on Emergency Response to Serious Animal Epidemics

Law of the PRC on the Prevention and Treatment of Infectious Diseases

Measures for the Implementation of the Law of the PRC on the Prevention and Treatment of Infectious Diseases

Regulation on the Urgent Handling of Public Health Emergencies

Food Hygiene Law

Law of people's Republic of China on the Entry and Exit Animal and Plant Quarantine

Animal Epidemic Prevention Law

Frontier Health and Quarantine Law

·Law of people's Republic of China on the Entry and Exit Animal and Plant Quarantine

Regulations on Plant Quarantine

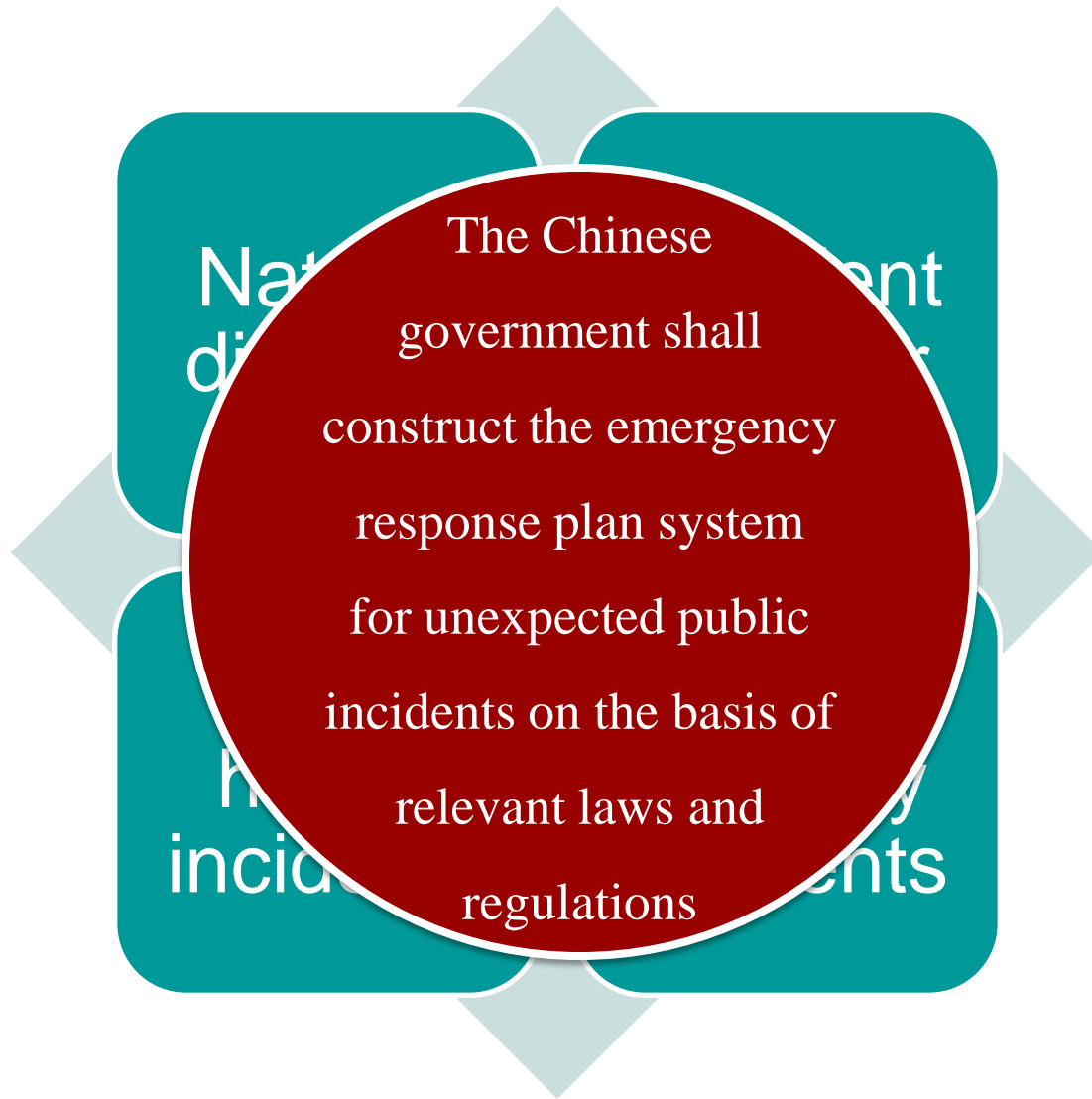
·Detailed Rules for the Implementation of the Frontier Health and Quarantine Law



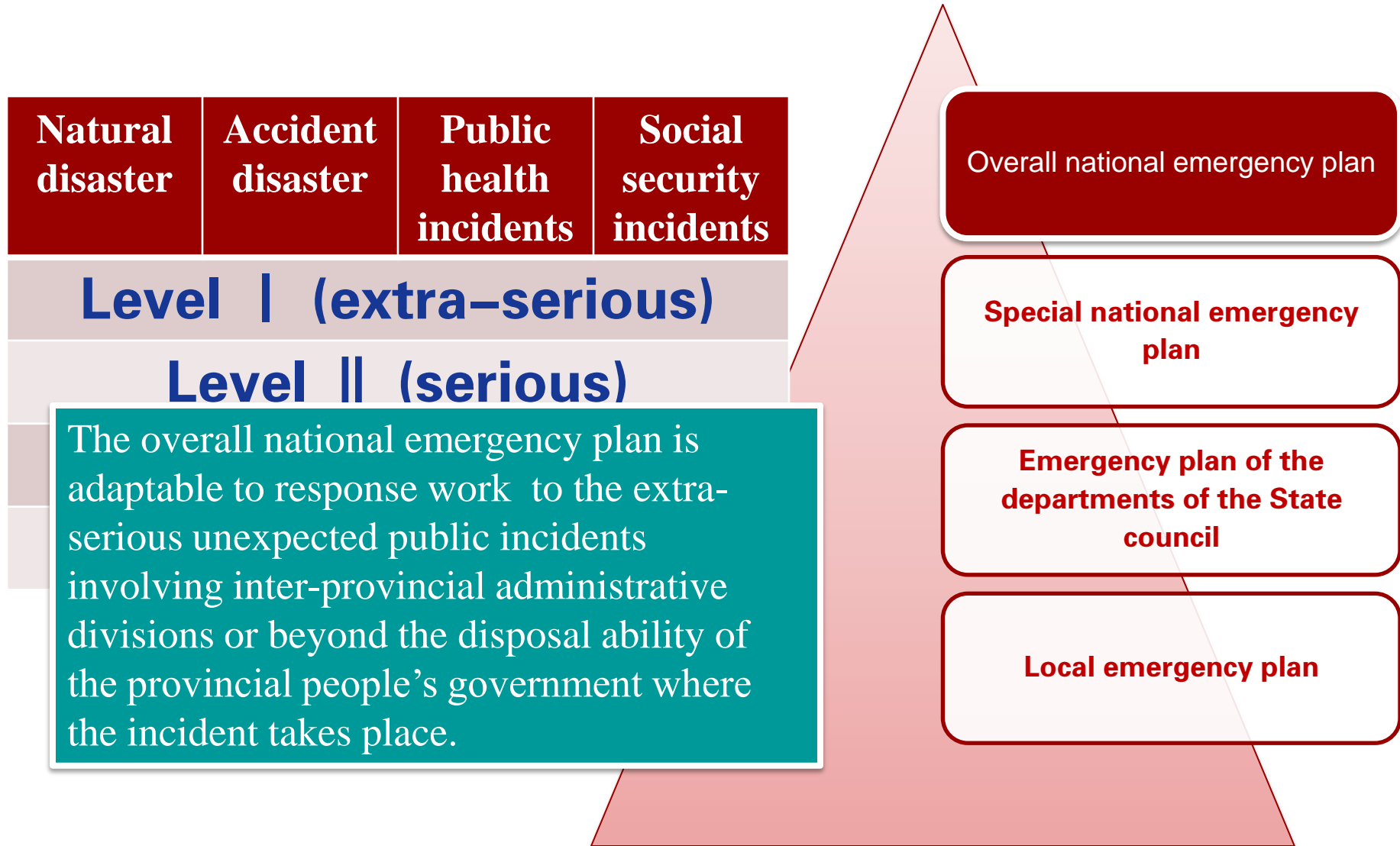
Social security incidents

- National Security Law
- Law of the Peoples Republic of China on Regional National Autonomy
- Martial Law
- People's Police Law
- Law of the Peoples Republic of China on Assemblies, Processions and Demonstrations
- Prison Law
- Regulations on Letters and Visits
- Regulations of the People's Republic of China on Settlement of Labor Disputes in Enterprises
- Regulations on the Handling of Boundary Disputes between Administrative Areas
- Regulations on Funeral and Interment Control
- Regulations Governing Performances for Business
- Law of the Peoples Republic of China on the Peoples Bank of China





Plan system for unexpected public incidents of China



Plan system for unexpected public incidents of China



National transport emergency response plans

07. Emergency Response Plan for Railway

Accidents

08. Emergency Response Plan for Civil

Accident

09. Emergency Response **Plan for Marine**

Search and Rescue

10. Emergency Response Plan for City Metro

Accident and Disaster

21

plans

09. Plan for Marine Search and Rescue

Operation and management organization:

The Marine Search and Rescue Center of China undertakes the operation and management work of marine search and rescue with the Ministry of Transport as the main body.

Main content:

- 2 National organization and command system of marine search and rescue, responsibilities and tasks**
- 3 Early warning and prevention mechanism**
- 4 Risk classification and report of emergency maritime incident**
- 5 Emergency response and disposal of emergency maritime incident**
- 6 Post disposal**
- 7 Emergency response support**

Emergency response plans in transport departments

- ❖ 2. Railway emergency response plan for flood control
- ❖ 3. Railway emergency response for destructive earthquake
- ❖ 4. Railway emergency response for geological disasters
- ❖ 20. Emergency response plan for serious accidents of city bridge
- ❖ 21. Railway emergency response for casualty accidents
- ❖ 22. Railway emergency response for fire accidents
- ❖ 23. Railway emergency response for transportation accidents of dangerous chemical goods
- ❖ 24. Railway emergency response for network and information safety accidents
- ❖ 25. Waterway emergency response plan for unexpected public incidents
- ❖ 26. Road emergency response plan for unexpected public incidents
- ❖ 39. Railway emergency response plan for unexpected public health incidents

❖ 25. Waterway emergency response plan for unexpected public incidents

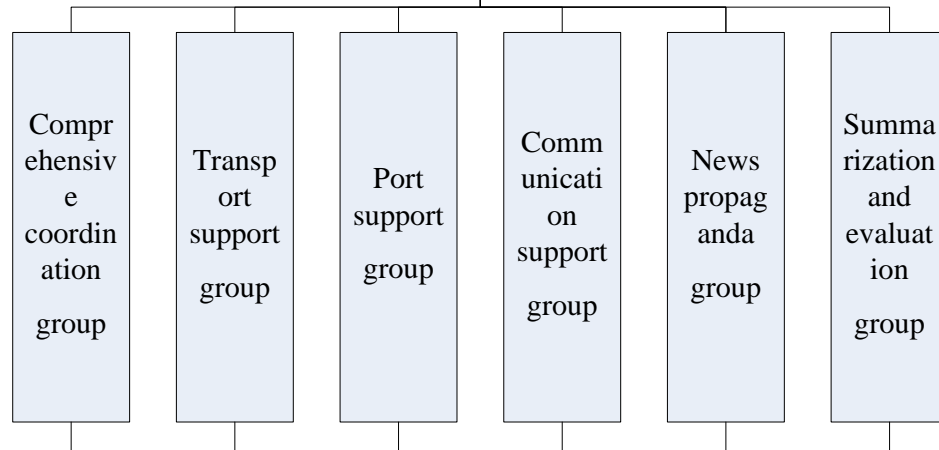
In the emergency response to the Level I (extra-serious) unexpected incidents, the emergency commanding center of unexpected incident of waterway transport is responsible to coordinate the related departments to participate in the emergency cooperation according to the level and type of the unexpected incident and the emergency task division of each coordinative department is decided according to its existing

决策层

Leading group of emergency response work to unexpected transport incidents

指挥层

Commanding center of emergency response to waterway transport



执行层

Local commanding organization of emergency response to waterway transport

Ministry of Transport

❖ 26. Road emergency plan for unexpected public incidents

国家级公路交通应急管理机构

State leading group of emergency response work to unexpected highway transport incidents

Emergency response working group including the contact person of each department

Daily management bodies

on-site working group

Expert advisory group

省级公路交通应急管理机构

市级公路交通应急管理机构

县级公路交通应急管理机构

The emergency organization system of road transport is composed of 4-level emergency management organizations including state level, provincial level, city level and county level.

Main content



**Regulation
and plan
system**

**Training
exercises**

Marine search and rescue exercise

- ❖ **Place of exercise:** This exercise was held in Ningbo-Zhoushan port with a throughput ranking second in the country. It is the sea area with the maximum traffic density in the world and also is the frequent occurrence place of maritime transport accidents and the high risk area of leakage accident of dangerous chemical goods.

60年来最大规模海上搜救演习三大看点



杭州

舟山群岛

海上搜救演习

新中国成立以来规模最大

浙江

演习区域

时间 2009年9月4日

地点 宁波 - 舟山港佛渡港区

三大看点

- 1 全世界最繁忙海域罕见的国家级搜救演习
- 2 国家15部委联动 全程信息化实时指挥
- 3 海陆空出动 全方位立体救援

演习示意图



相撞

客船

危化品船

曲振东编制 新华社发

Marine search and rescue exercise

- ❖ **Simulation scene:** A Ro/Ro passenger ship Vessel “Ningzhou” with 368 passengers and 22 sailors on board collides with the bulk chemical carrier Vessel “Daihe” in the sea area of Fodu channel, the core area of Ningbo-Zhoushan Port due to the main engine failure. The lives of several hundreds of persons on Vessel “Ningzhou” and the tens of thousands of residents along the coast are seriously threatened.



Marine search and rescue exercise

- ❖ **Response actions:** The Marine Search and Rescue Center of China immediately set up the general command and notified the member units including Ministry of Industry and Information Technology, Ministry of Public Security, Ministry of Civil Affairs, Ministry of Agriculture, Ministry of Health, General Administration of Customs, State Administration of Work Safety, State Seismological Bureau, State Meteorological Administration, National Bureau of Oceanography, Civil Aviation Administration of China, General Staff, Naval Force, Air force and Armed Police Force, to start up the linkage emergency response plan according to their own responsibilities and set up coordination command.



Marine search and rescue exercise



The persons on board the “accident” ship are evacuating



The helicopter and the rescue ship are rescuing the firing “accident” ship

Since 2000, the Ministry of Transport and the Marine Search and Rescue Center of China have organized or jointly held 8 large-scale marine search and rescue exercises and 1 simulation exercise for search and rescue:

Thanks