

Access Across America

Measuring What Matters About
Transportation

Andrew Owen
Director, Accessibility Observatory



**ACCESSIBILITY
OBSERVATORY**

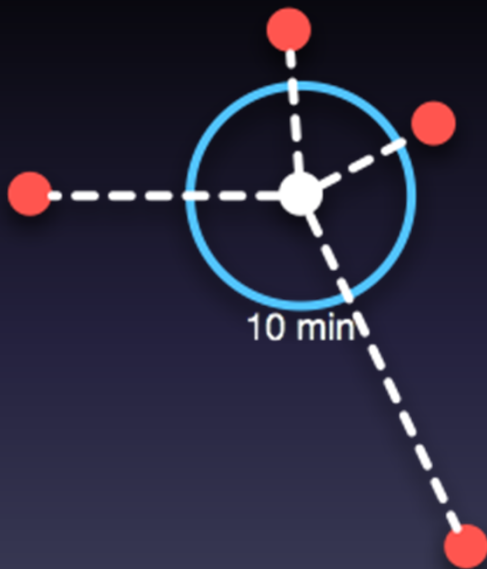
UNIVERSITY OF MINNESOTA
Driven to Discover™

What's the purpose of a transportation system?

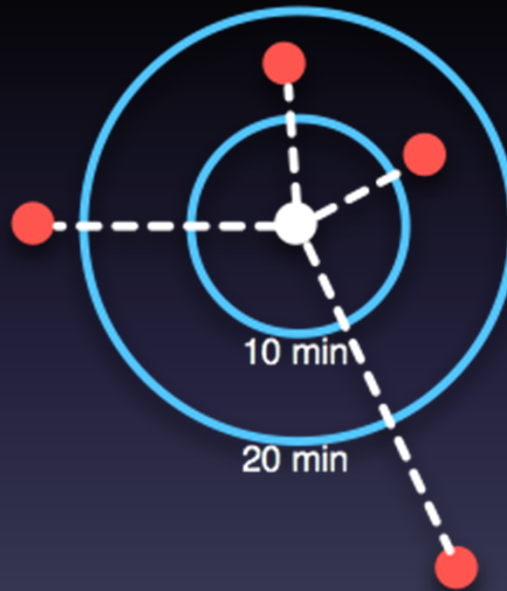
Transportation is about *opportunities*

Accessibility measures the ease of reaching
valued destinations

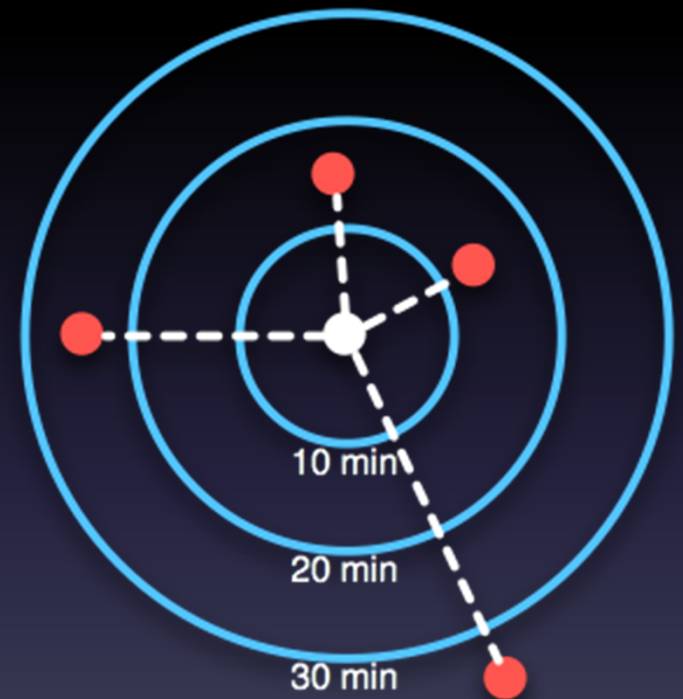
Cumulative Opportunities Accessibility



10-minute
accessibility: 0



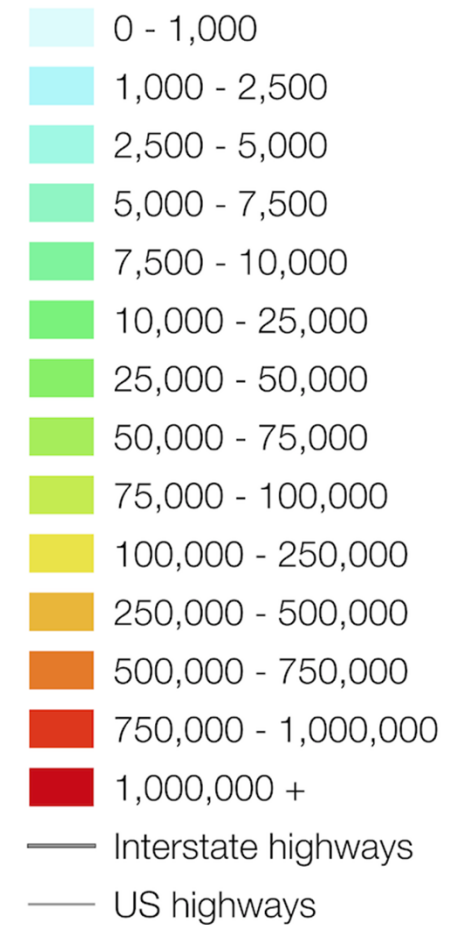
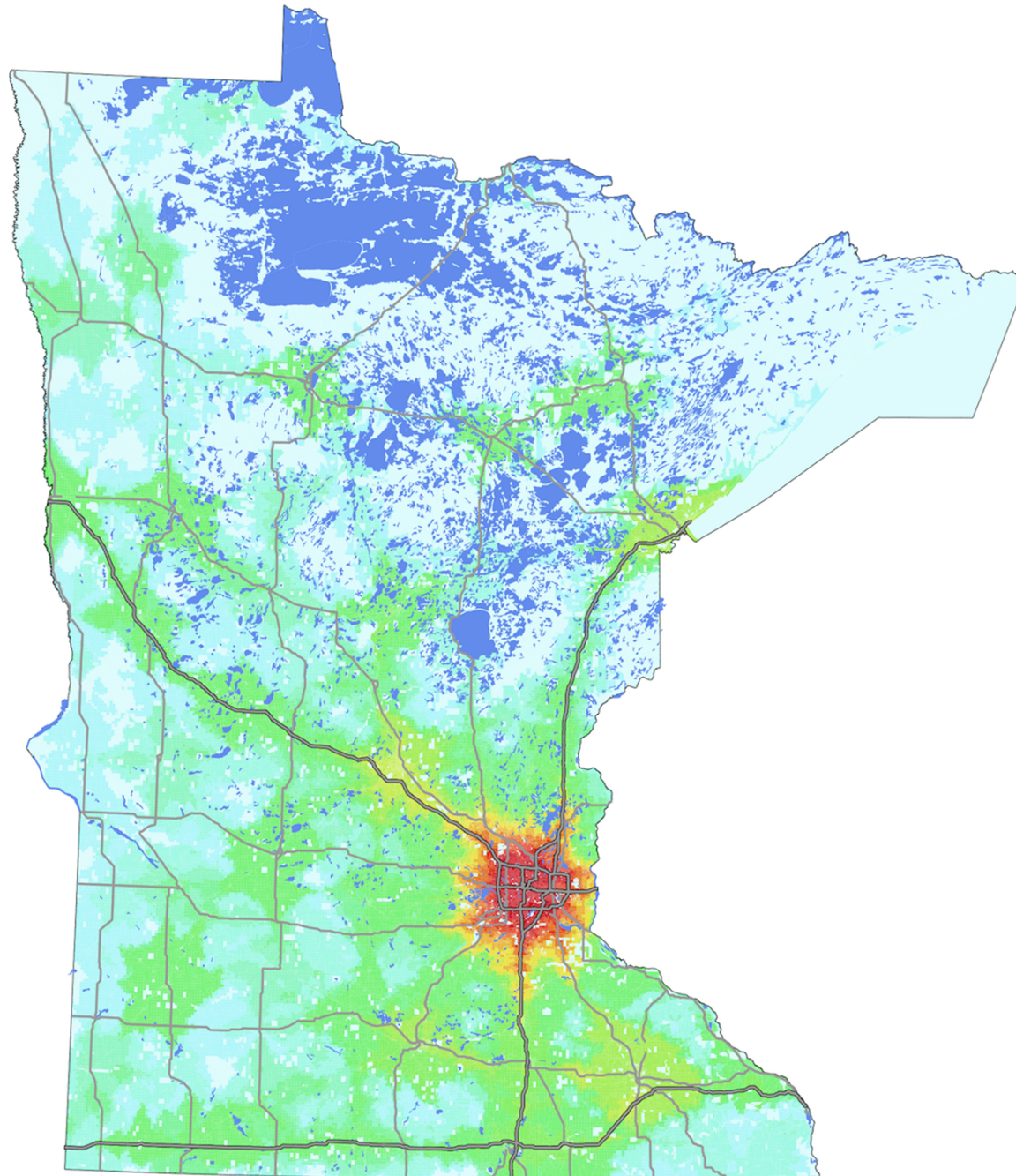
20-minute
accessibility: 2



30-minute
accessibility: 3

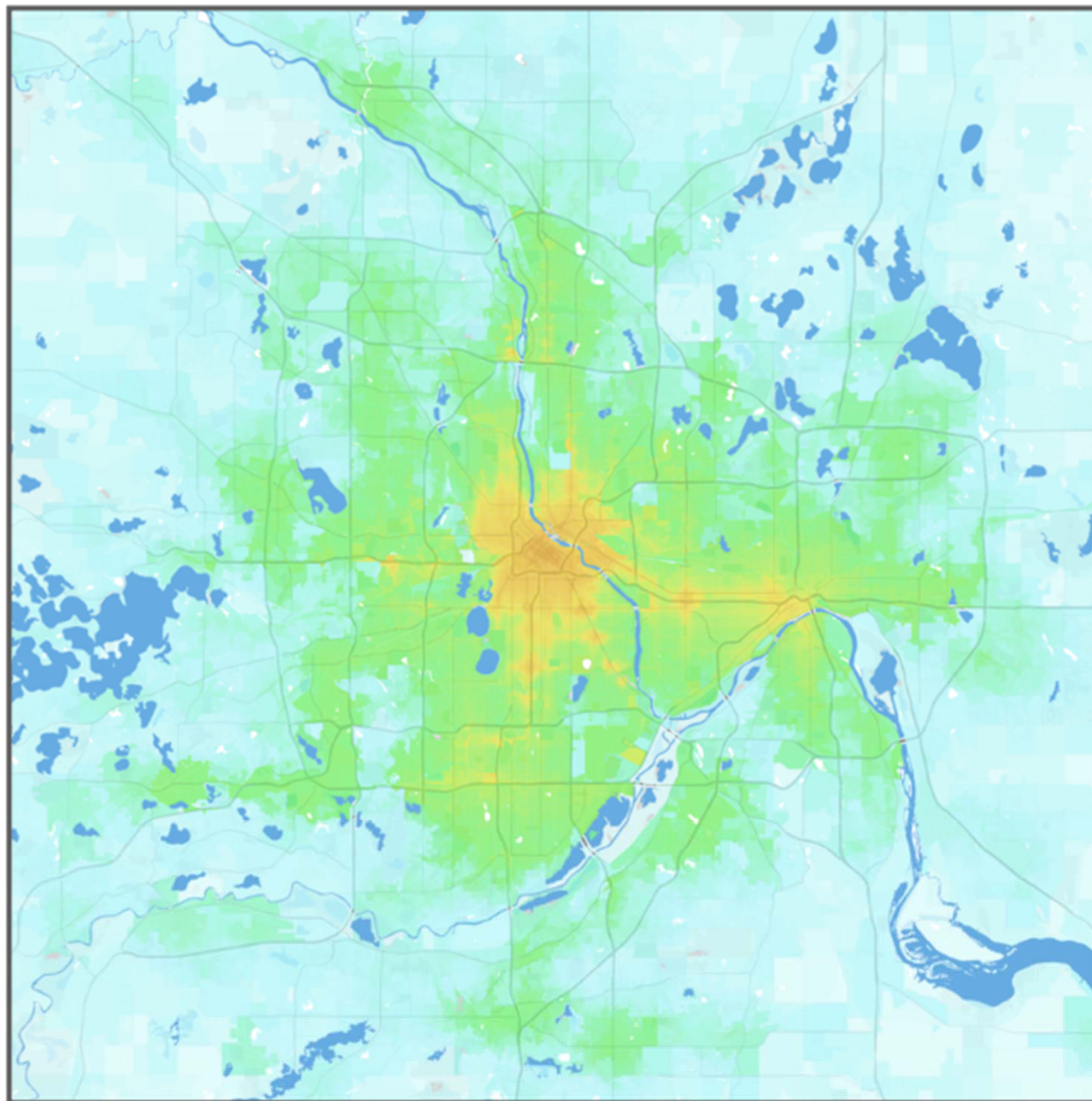
Accessibility to Jobs

- Within 40 minutes
- Free-flow speeds
- By car



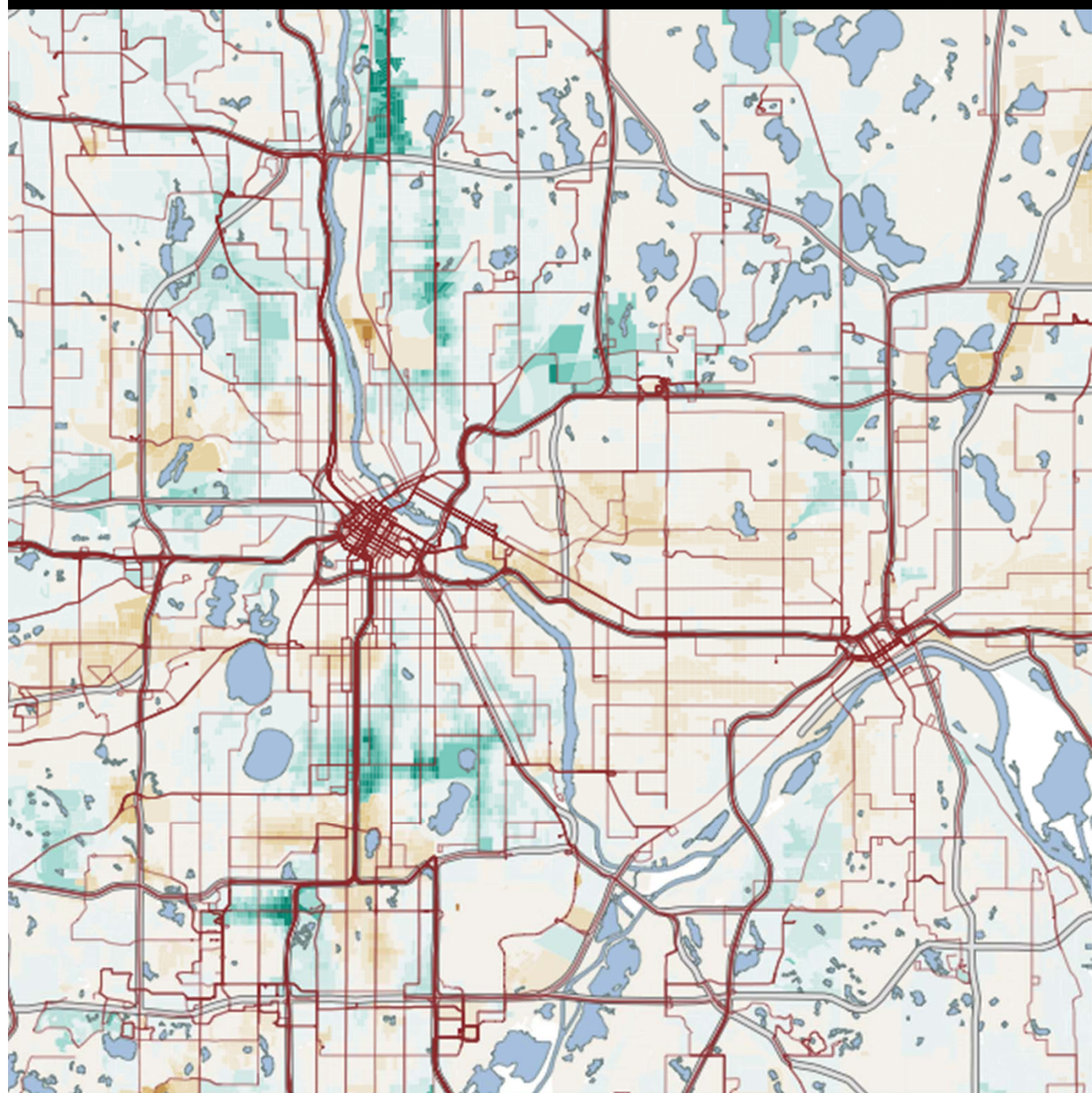
Minneapolis

Minneapolis-St. Paul-Bloomington, MN-WI



Jobs within 30 minutes
by transit, averaged 7 - 9 AM



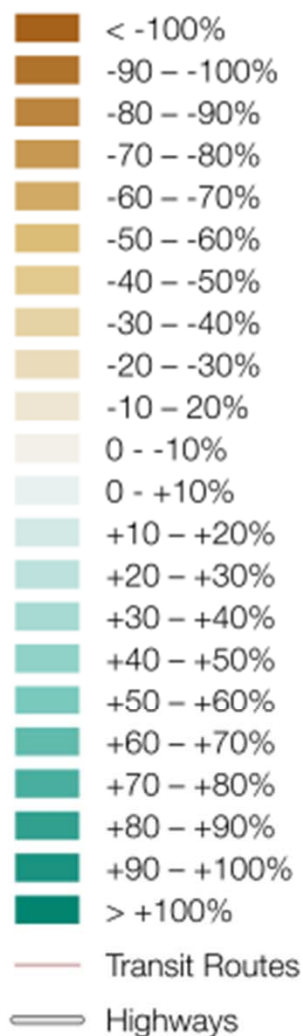


Change in Accessibility to Jobs

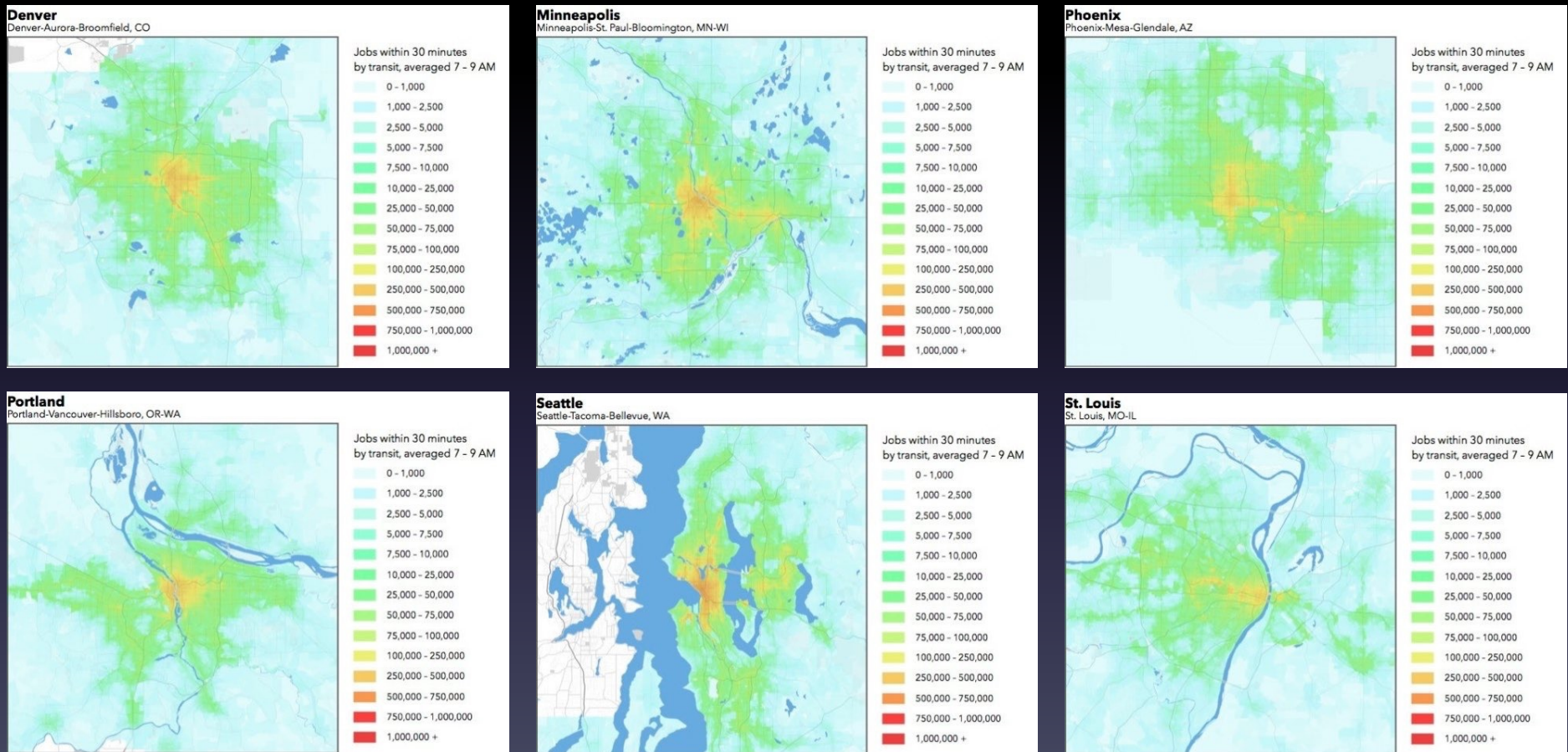
- 2010-2013

- Within 30 minutes

- Averaged 7-9 AM



Consistent Methodology Allows Meaningful Comparisons



From *Access Across America: Transit 2014*

(<http://access.umn.edu/research/america/transit2014/index.html>)

Data and Software

- Transit schedules (GTFS)
- Pedestrian network (OpenStreetMap)
- Block-level job counts (LEHD)
- Custom cloud computing/data infrastructure
- OpenTripPlanner
- 2014 results publicly available

Thanks!

Andrew Owen access.umn.edu
aowen@umn.edu @UMNAccOb



**ACCESSIBILITY
OBSERVATORY**

UNIVERSITY OF MINNESOTA
Driven to Discover™