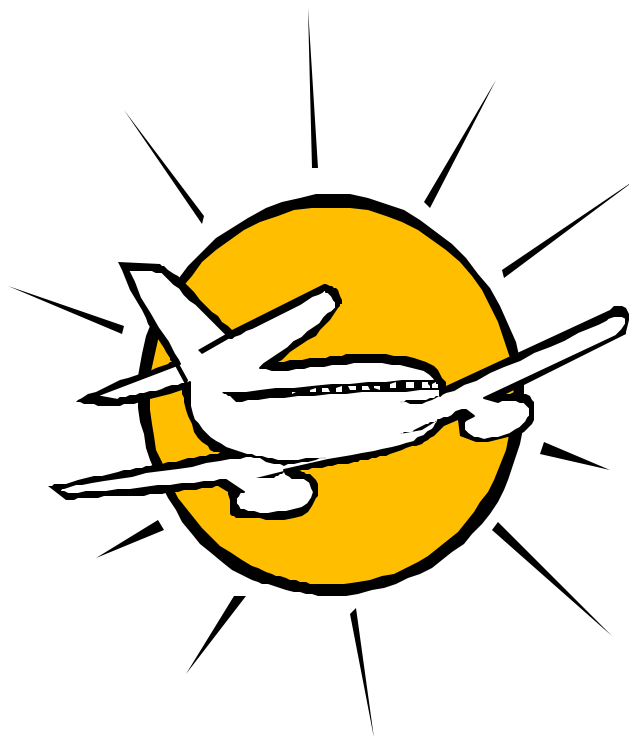

DOMESTIC AIRLINE FARES CONSUMER REPORT



Fourth Quarter 1999 Passenger and Fare Information

July 2000



U.S. Department of Transportation

FARE INFORMATION FOR CONSUMERS

Each month the Department of Transportation releases an Air Travel Consumer Report that includes information about various service quality elements, including flight delays, mishandled baggage, and oversales, and a variety of other types of consumer complaints.

In response to an increasing number of inquiries from consumers about domestic airline prices the Department decided to release a quarterly fare report. The first such report, for the third quarter of 1996, was released in June 1997. This is the fourteenth report, and is based on data for the fourth quarter of 1999.

The initial report provided information about average prices being paid by consumers in the 1,000 largest domestic city-pair markets within the 48 contiguous states. These markets account for about 75 percent of all 48-state passengers and 70 percent of total domestic passengers. This report includes the top 1,000 city-pair markets for the fourth quarter of 1999, plus 250 additional city pairs that have been in the top 1,000 during previous quarters covered by this report series.

Tables 1 through 5 contain the same information as previous reports. As with the other reports, a special feature has been included to provide more in-depth analysis of the effect of low-fare service on fares.

For each market, Table 1 lists the number of one-way passenger trips per day, the nonstop distance, the average market fare, and identifies the airlines with the largest market share and the lowest average fare; market share and average fares are provided for both airlines. Average fares are average prices paid by all fare paying passengers. They therefore cover first class fares paid to carriers offering such service but do not cover free tickets, such as those awarded by carriers offering frequent flyer programs.

Airlines tend to offer a wide variety of prices in any given market and it is unlikely that the average fares from this report will be the same as any particular fare offered. Nevertheless, information about average fares charged, including fares charged by dominant carriers and lower-cost competing carriers where available, can provide useful consumer information. Also, fare comparisons between markets allow consumers to further evaluate prices.

In particular, a high average fare in a market is an indication that a broad range of fares is available and that the number of seats sold at low fares are likely to be both very limited and subject to various travel restrictions. In such markets travelers must make extra efforts to get the lowest price for the service they want. Advice laid out in the fact sheet prepared by the Department's Aviation Consumer Protection Division—*Getting the Best Air Fare*—will help consumers accomplish this. This fact sheet can be obtained by requesting a copy at (202) 366-2220 or via the World Wide Web at:

<http://www.dot.gov/ost/ogc/subject/consumer/aviation/publications/bestfare.html>.

To assist consumers in making average fare comparisons, Table 1 segregates markets by mileage block, since distance is a major factor that affects the level of prices charged. Markets are then sorted within each mileage block by fare amount, from the highest average fare to the lowest. Consumers should understand that because carriers tend to offer a variety of prices in a market, carriers with higher average prices might offer some seats at prices as low as, or even lower than, carriers with much lower average prices.

The information contained in Table 1 reveals that in many markets the average fares are quite different from carrier-to-carrier. In some instances this reflects differences in service, such as connecting versus nonstop service, or service to different area airports. Note that the “lowest fare carrier” is the carrier with the lowest average fare that has at least a 10 percent share of the traffic in the market, except for markets where only a single carrier has a 10 percent or greater share. In such markets the carrier with the lowest average fare is identified even if its market share is less than 10 percent. In some markets the “market average” fare will be lower than the fare for the “lowest fare carrier” because several carriers that do not individually account for a 10 percent share can collectively account for a significant share. Often they charge lower average fares than individual carriers with greater market participation.

In Table 2, the data are summarized by city. The information provided includes the number of city-pair markets in the top 1,000+ that involve each city (e.g., 10 for Burbank), the number of passengers traveling to and from each city, the average fare, average fare per mile (yield), and average distance traveled. The data are sorted by distance.

Data are provided for markets that experienced changes in average fares of more than 30 percent compared with one year ago. Markets with large increases are shown in Table 3 and markets with large decreases are shown in Table 4. Each market’s average fare and total passenger count are provided, along with the absolute and percent change in both average fares and passengers.

Table 5 provides detailed fare information for short-haul, high-fare markets. For a more complete explanation, please read the introductory information at the beginning of Table 5 itself.

This quarter’s special feature tracks changes in traffic and fares after Southwest Airlines introduced service to a number of destinations from Raleigh/Durham, NC.

Footnotes and a key for carrier codes used in this report can be found at the end of the report. This report is also available at <http://ostpxweb.dot.gov/aviation>. Telephone inquiries should be referred to (202) 366-1032.

Market and Carrier Fare Information
Top 1,000+ Contiguous State City-Pair Markets
Fourth Quarter 1999

Table 1 City-Pair	Market Data			Largest Carrier			Lowest Fare Carrier		
	Nonstop Distance	Psgs Per Day	Average One Way Fare	Carrier	Percent Market Share	Average One Way Fare 2/	Carrier	Percent Market Share	Average One Way Fare 2/
Mileage Block : 100 Miles or Less									
CLEVELAND, OH DETROIT, MI	95	146	162	NW	76.32	162	CO	23.6	161
Mileage Block : 101 to 150 miles									
CHICAGO, IL GRAND RAPIDS, MI	137	138	209	UA	53.86	216	TZ	13.41	133
ASPEN, CO DENVER, CO	125	101	130	UA	99.89	129	UA	99.89	129
PORTLAND, OR SEATTLE, WA	129	616	118	AS	96.56	119	DL	2.42	75
LOS ANGELES, CA SAN DIEGO, CA	109	348	84	AA	47.59	84	UA	36.8	80
Mileage Block : 151 to 200 miles									
PHILADELPHIA, PA RICHMOND, VA	198	170	250	US	98.47	250	US	98.47	250
HARTFORD, CT PHILADELPHIA, PA	196	261	234	US	98.17	234	US	98.17	234
ATLANTA, GA COLUMBIA, SC	191	94	231	DL	98.04	231	DL	98.04	231
NEW YORK, NY PROVIDENCE, RI	160	238	162	CO	56.22	170	US	33	154
NEW YORK, NY SYRACUSE, NY	198	320	155	US	62.21	155	AA	13.91	130
BALTIMORE, MD NEW YORK, NY	182	470	152	US	56.83	157	AA	13.14	116
BOSTON, MA NEW YORK, NY	185	7096	139	DL	43.43	129	DL	43.43	129
MIAMI, FL ORLANDO, FL	193	283	124	AA	79.17	125	US	16.46	115
ATLANTA, GA KNOXVILLE, TN	152	191	90	DL	72.93	97	FL	26.89	68
PASCO, WA SEATTLE, WA	172	186	89	AS	98.95	89	AS	98.95	89
CHICAGO, IL INDIANAPOLIS, IN	177	948	83	UA	42.53	95	WN	40.9	58
AUSTIN, TX DALLAS, TX	183	2070	82	WN	59.5	77	WN	59.5	77
DALLAS, TX OKLAHOMA CITY, OK	181	602	78	WN	70.53	75	WN	70.53	75
AUSTIN, TX HOUSTON, TX	152	921	78	WN	71.59	75	WN	71.59	75
HOUSTON, TX SAN ANTONIO, TX	192	994	78	WN	71.38	73	WN	71.38	73
CORPUS CHRISTI, TX HOUSTON, TX	187	464	76	WN	70.07	73	WN	70.07	73
JACKSONVILLE, FL TAMPA, FL	180	298	68	US	60.98	71	WN	38.8	61
RENO, NV SAN FRANCISCO, CA	192	324	67	UA	99.87	67	UA	99.87	67
LAS VEGAS, NV ONTARIO, CA	197	1162	66	WN	93.3	66	HP	6.17	51
FT. LAUDERDALE, FL ORLANDO, FL	178	777	64	WN	82.58	63	WN	82.58	63
FT. LAUDERDALE, FL TAMPA, FL	197	1326	64	WN	92.32	64	DL	6.99	59
OAKLAND, CA RENO, NV	180	543	58	WN	99	57	WN	99	57
RENO, NV SAN JOSE, CA	188	713	55	WN	81.18	55	AA	18.5	52
Mileage Block : 201 to 250 miles									
PHILADELPHIA, PA PROVIDENCE, RI	238	170	255	US	97.5	256	US	97.5	256
ATLANTA, GA NASHVILLE, TN	214	312	253	DL	99.23	253	DL	99.23	253
CINCINNATI, OH DETROIT, MI	229	114	232	NW	69.43	236	DL	27.62	223
PITTSBURGH, PA WASHINGTON, DC	201	328	230	US	97.18	231	CO	1.16	121
DETROIT, MI PITTSBURGH, PA	201	215	227	US	54.16	228	NW	44.93	224
GREENSBORO, NC WASHINGTON, DC	248	101	216	US	97.64	216	US	97.64	216
CHICAGO, IL DAYTON, OH	240	206	213	UA	60.17	232	TZ	16.33	127
ATLANTA, GA CHARLOTTE, NC	227	554	211	DL	70.24	210	US	29.01	209
NANTUCKET, MA NEW YORK, NY	206	12	196	US	50.94	194	CO	5.66	174
MANCHESTER, NH NEW YORK, NY	209	275	169	CO	52.8	164	CO	52.8	164
NEW YORK, NY WASHINGTON, DC	214	6342	127	DL	40.02	124	US	36.83	120
DETROIT, MI MILWAUKEE, WI	238	477	124	NW	97.1	122	NW	97.1	122
RALEIGH/DURHAM, NC WASHINGTON, DC	225	689	98	US	76.83	86	US	76.83	86
MIAMI, FL TAMPA, FL	204	397	97	AA	60.12	96	AA	60.12	96

Table 1

		Market Data			Largest Carrier			Lowest Fare Carrier		
City-Pair		Nonstop Distance	Psgs Per Day	Average One Way Fare	Carrier	Percent Market Share	Average One Way Fare 2/	Carrier	Percent Market Share	Average One Way Fare 2/
TALLAHASSEE, FL	TAMPA, FL	200	243	97	US	98.03	97	CO	1.43	90
LAS VEGAS, NV	SANTA ANA, CA	226	934	91	HP	80.06	90	HP	80.06	90
DETROIT, MI	INDIANAPOLIS, IN	231	603	89	NW	90.22	89	P9	6.95	60
DALLAS, TX	HOUSTON, TX	236	5444	80	WN	67.31	77	WN	67.31	77
ATLANTA, GA	SAVANNAH, GA	215	478	79	DL	74.11	82	FL	25.46	68
DALLAS, TX	SAN ANTONIO, TX	248	2235	77	WN	73.59	74	WN	73.59	74
CHICAGO, IL	DETROIT, MI	233	3768	77	NW	40.88	77	WN	22.85	70
HARLINGEN, TX	SAN ANTONIO, TX	233	216	73	WN	98.79	72	CO	1.11	47
ALBUQUERQUE, NM	EL PASO, TX	223	255	72	WN	86.64	74	F9	10.16	54
DALLAS, TX	TULSA, OK	237	1133	72	WN	63.47	70	WN	63.47	70
KANSAS CITY, MO	TULSA, OK	223	178	71	WN	99.94	71	WN	99.94	71
INDIANAPOLIS, IN	ST. LOUIS, MO	229	327	68	TW	51.91	72	WN	47.65	61
BURBANK, CA	LAS VEGAS, NV	223	1855	67	WN	99.96	67	WN	99.96	67
LAS VEGAS, NV	LOS ANGELES, CA	236	5469	63	WN	46.05	64	N7	10.99	55
KANSAS CITY, MO	ST. LOUIS, MO	237	998	60	TW	56.28	61	WN	43.6	57
BALTIMORE, MD	ISLIP/LONG ISLAND, NY	220	529	58	WN	99.69	57	WN	99.69	57
SEATTLE, WA	SPOKANE, WA	224	2078	57	AS	66.8	60	WN	32.97	51
Mileage Block : 251 to 300 miles										
CHARLOTTE, NC	RICHMOND, VA	256	152	254	US	98.21	254	US	98.21	254
MINNEAPOLIS, MN	OMAHA, NE	282	213	230	NW	98.98	229	NW	98.98	229
NEW YORK, NY	RICHMOND, VA	292	537	224	US	57.13	220	US	57.13	220
BUFFALO, NY	PHILADELPHIA, PA	279	178	213	US	96.22	214	US	96.22	214
ATLANTIC CITY, NJ	BOSTON, MA	274	4	206	US	88.89	209	US	88.89	209
ATLANTA, GA	CHARLESTON, SC	259	232	205	DL	96.54	204	DL	96.54	204
PHILADELPHIA, PA	ROCHESTER, NY	257	174	204	US	97.18	205	US	97.18	205
SYRACUSE, NY	WASHINGTON, DC	298	166	200	US	94.89	203	CO	2.69	123
NEW YORK, NY	PORTLAND, ME	284	146	191	CO	80.7	190	CO	80.7	190
BATON ROUGE, LA	HOUSTON, TX	253	109	185	CO	98.01	185	CO	98.01	185
PHILADELPHIA, PA	PITTSBURGH, PA	267	852	184	US	98.74	184	US	98.74	184
CLEVELAND, OH	INDIANAPOLIS, IN	261	201	183	CO	77.23	200	WN	13.9	93
CHICAGO, IL	DES MOINES, IA	299	302	183	UA	64.63	187	UA	64.63	187
NEW YORK, NY	NORFOLK, VA	296	509	176	US	49.59	169	US	49.59	169
BURLINGTON, VT	NEW YORK, NY	258	206	175	US	53.27	187	CO	44.14	155
ROCHESTER, NY	WASHINGTON, DC	296	239	168	US	78.44	165	US	78.44	165
BUFFALO, NY	WASHINGTON, DC	296	212	160	US	86.07	165	CO	4.86	109
BOSTON, MA	PHILADELPHIA, PA	280	2025	145	US	79.72	152	AA	11.26	117
BUFFALO, NY	NEW YORK, NY	292	1141	145	US	59.1	145	US	59.1	145
NEW YORK, NY	ROCHESTER, NY	254	661	144	US	65.62	143	US	65.62	143
CHICAGO, IL	CINCINNATI, OH	264	1153	124	DL	48.25	129	NJ	21.34	63
SAN FRANCISCO, CA	SANTA BARBARA, CA	262	298	123	UA	95.91	124	AA	2.74	81
MILWAUKEE, WI	MINNEAPOLIS, MN	297	682	107	NW	86.83	107	SY	11.94	91
ATLANTA, GA	VALPARAISO, FL	264	225	95	FL	74.14	78	FL	74.14	78
ATLANTA, GA	JACKSONVILLE, FL	270	1032	94	DL	76.43	96	FL	23.18	83
CHICAGO, IL	COLUMBUS, OH	284	1567	92	WN	49.75	65	WN	49.75	65
AUSTIN, TX	MIDLAND/ODESSA, TX	290	179	86	WN	97.02	85	CO	1.52	71
CHICAGO, IL	ST. LOUIS, MO	251	2745	81	WN	46.45	66	WN	46.45	66
BURBANK, CA	SAN JOSE, CA	296	1273	76	WN	99.96	75	WN	99.96	75
DALLAS, TX	LITTLE ROCK, AR	296	906	73	WN	67.11	70	WN	67.11	70
BALTIMORE, MD	HARTFORD, CT	283	703	72	WN	70.46	55	WN	70.46	55
DALLAS, TX	LUBBOCK, TX	293	951	72	WN	84.35	70	WN	84.35	70
CHICAGO, IL	LOUISVILLE, KY	271	937	70	WN	72.45	59	WN	72.45	59
BALTIMORE, MD	RALEIGH/DURHAM, NC	255	511	69	WN	66.01	59	WN	66.01	59

Table 1

City-Pair		Market Data			Largest Carrier			Lowest Fare Carrier		
		Nonstop Distance	Psgs Per Day	Average One Way Fare	Carrier	Percent Market Share	Average One Way Fare 2/	Carrier	Percent Market Share	Average One Way Fare 2/
LAS VEGAS, NV	SAN DIEGO, CA	258	1994	68	WN	89.3	68	HP	8.71	59
AUSTIN, TX	HARLINGEN, TX	280	198	67	WN	97.3	67	CO	2.42	66
HARLINGEN, TX	HOUSTON, TX	276	612	64	WN	91.26	64	CO	8.48	61
BOISE, ID	SALT LAKE CITY, UT	291	404	64	WN	50.47	54	WN	50.47	54
LITTLE ROCK, AR	ST. LOUIS, MO	296	341	63	WN	56.38	59	WN	56.38	59
LAS VEGAS, NV	PHOENIX, AZ	256	2966	61	WN	72.03	63	HP	27.41	54
PORTLAND, OR	SPOKANE, WA	279	777	60	WN	57.71	52	WN	57.71	52
BOISE, ID	SPOKANE, WA	287	427	60	WN	64.54	54	WN	64.54	54
LOUISVILLE, KY	ST. LOUIS, MO	254	240	59	WN	60.77	57	WN	60.77	57
Mileage Block : 301 to 350 miles										
ATLANTA, GA	JACKSON, MS	341	201	247	DL	97.03	247	NW	1.24	246
ATLANTA, GA	LOUISVILLE, KY	321	309	244	DL	96.14	245	NW	1.16	189
ATLANTA, GA	LEXINGTON/FRANKFORT	303	121	232	DL	98.11	232	DL	98.11	232
CHARLOTTE, NC	NASHVILLE, TN	329	226	227	US	91.48	230	DL	7.7	184
CHARLOTTE, NC	JACKSONVILLE, FL	329	139	222	US	90.52	220	US	90.52	220
CHARLOTTE, NC	WASHINGTON, DC	327	521	212	US	95.2	214	CO	1.13	102
CLEVELAND, OH	MILWAUKEE, WI	328	229	211	YX	56.99	217	CO	37.52	202
NEW YORK, NY	PITTSBURGH, PA	330	1494	195	US	71.92	206	US	71.92	206
PHILADELPHIA, PA	RALEIGH/DURHAM, NC	336	476	192	US	73.7	185	US	73.7	185
ALBANY, NY	WASHINGTON, DC	318	209	190	US	92.86	192	CO	2.03	124
ALBUQUERQUE, NM	DENVER, CO	349	349	184	UA	79.99	187	F9	19.13	168
CHICAGO, IL	MINNEAPOLIS, MN	344	3072	178	NW	56.37	165	NJ	13.36	107
CHICAGO, IL	LEXINGTON/FRANKFORT	323	136	161	UA	82.76	152	UA	82.76	152
ATLANTA, GA	MOBILE, AL	302	208	159	DL	98.75	158	DL	98.75	158
PHOENIX, AZ	SANTA ANA, CA	338	440	155	HP	97.16	155	UA	1.98	132
BOSTON, MA	ROCHESTER, NY	343	243	152	US	94.31	150	US	94.31	150
CLEVELAND, OH	WASHINGTON, DC	308	316	151	CO	94.63	152	US	2.14	113
DETROIT, MI	LOUISVILLE, KY	306	257	145	NW	81.96	150	WN	12.96	96
DALLAS, TX	WICHITA, KS	328	184	139	AA	83.98	137	AA	83.98	137
BALTIMORE, MD	COLUMBUS, OH	337	93	134	HP	40.52	151	CO	11.94	96
COLUMBUS, OH	WASHINGTON, DC	313	561	113	US	67.53	114	HP	27.53	106
HARTFORD, CT	WASHINGTON, DC	318	889	112	US	70.47	122	UA	25.47	84
JACKSONVILLE, FL	MIAMI, FL	334	150	111	AA	89.91	108	AA	89.91	108
CINCINNATI, OH	ST. LOUIS, MO	307	169	106	TW	64.99	102	TW	64.99	102
ATLANTA, GA	GREENSBORO, NC	306	682	101	DL	71.3	110	FL	25.25	75
ATLANTA, GA	MEMPHIS, TN	332	1173	97	DL	66.54	101	FL	18.06	85
HOUSTON, TX	MISSION/MCALLEN, TX	316	252	96	CO	98.4	95	CO	98.4	95
BURBANK, CA	SAN FRANCISCO, CA	326	1380	93	UA	99.83	93	UA	99.83	93
AUSTIN, TX	LUBBOCK, TX	335	284	90	WN	95.75	89	CO	1.8	78
LOS ANGELES, CA	SAN FRANCISCO, CA	337	4501	88	UA	79.27	90	AA	12.8	74
HOUSTON, TX	NEW ORLEANS, LA	303	2207	87	WN	64.59	82	WN	64.59	82
CHICAGO, IL	CLEVELAND, OH	312	2665	82	CO	33.51	84	WN	31.83	64
BURBANK, CA	OAKLAND, CA	325	2329	78	WN	99.44	78	WN	99.44	78
SAN JOSE, CA	SANTA ANA, CA	342	2430	75	AA	52.27	77	WN	45.93	72
DALLAS, TX	MIDLAND/ODESSA, TX	319	684	73	WN	87.48	72	WN	87.48	72
LOS ANGELES, CA	OAKLAND, CA	337	4112	73	WN	77.62	73	UA	21.15	72
ONTARIO, CA	SAN JOSE, CA	333	1000	73	WN	97.9	73	WN	97.9	73
OMAHA, NE	ST. LOUIS, MO	342	434	71	TW	51.37	87	WN	47.71	52
BOISE, ID	RENO, NV	335	147	71	WN	98.45	69	WN	98.45	69
LOS ANGELES, CA	SAN JOSE, CA	308	3144	71	WN	50.3	72	AA	23.65	69
BOISE, ID	PORTLAND, OR	344	738	71	WN	59.46	59	WN	59.46	59
AMARILLO, TX	DALLAS, TX	324	776	70	WN	77.31	68	WN	77.31	68

Table 1

City-Pair		Market Data			Largest Carrier			Lowest Fare Carrier		
		Nonstop Distance	Psgs Per Day	Average One Way Fare	Carrier	Percent Market Share	Average One Way Fare 2/	Carrier	Percent Market Share	Average One Way Fare 2/
KANSAS CITY, MO	OKLAHOMA CITY, OK	313	372	68	WN	98.13	67	WN	98.13	67
ALBUQUERQUE, NM	TUCSON, AZ	321	199	67	WN	73.57	64	WN	73.57	64
BIRMINGHAM, AL	NEW ORLEANS, LA	321	387	65	WN	96.94	63	WN	96.94	63
ALBUQUERQUE, NM	PHOENIX, AZ	328	1449	64	WN	82.77	64	HP	17.13	60
FT. LAUDERDALE, FL	JACKSONVILLE, FL	318	707	64	WN	99.25	63	WN	99.25	63
PHOENIX, AZ	SAN DIEGO, CA	304	2120	61	WN	74.28	63	HP	21.86	56
BALTIMORE, MD	CLEVELAND, OH	314	1355	61	WN	39.31	58	US	30.83	57
EL PASO, TX	PHOENIX, AZ	347	621	61	WN	85.49	60	HP	14.27	60
LAS VEGAS, NV	RENO, NV	345	1581	61	WN	75.36	61	AA	23	58
BALTIMORE, MD	PROVIDENCE, RI	328	1998	60	WN	69.51	58	WN	69.51	58
ONTARIO, CA	PHOENIX, AZ	325	1638	60	WN	80.46	60	HP	19.15	54
Mileage Block : 351 to 400 miles										
CLEVELAND, OH	PHILADELPHIA, PA	363	338	281	CO	49.68	290	US	46.07	274
ATLANTA, GA	CINCINNATI, OH	373	410	252	DL	95.95	255	DL	95.95	255
BALTIMORE, MD	CHARLOTTE, NC	360	275	237	US	95.03	238	US	95.03	238
CHARLOTTE, NC	PITTSBURGH, PA	366	219	229	US	94.69	231	NW	1.24	161
DAYTON, OH	WASHINGTON, DC	387	256	210	US	90.46	212	NW	2.76	98
BOSTON, MA	BUFFALO, NY	396	257	197	US	89.44	202	AA	1.06	87
PHILADELPHIA, PA	PORTLAND, ME	365	153	193	US	91.39	192	US	91.39	192
GREENSBORO, NC	PHILADELPHIA, PA	365	264	184	US	95.8	183	DL	1.81	178
PROVIDENCE, RI	WASHINGTON, DC	357	396	159	US	94.92	160	CO	1.54	132
BALTIMORE, MD	BOSTON, MA	370	708	142	US	96.3	142	US	96.3	142
COLUMBUS, OH	RALEIGH/DURHAM, NC	361	196	136	JI	58.98	150	US	22.9	110
DENVER, CO	SALT LAKE CITY, UT	391	1030	123	UA	51.68	119	F9	20.66	107
BATON ROUGE, LA	DALLAS, TX	383	184	121	DL	53.15	122	AA	42.49	120
HOUSTON, TX	LITTLE ROCK, AR	391	325	106	WN	62.17	104	WN	62.17	104
PALM SPRINGS, CA	SAN JOSE, CA	391	73	106	AS	47.19	94	AS	47.19	94
KANSAS CITY, MO	MINNEAPOLIS, MN	393	821	103	NW	82.66	105	NJ	16.13	80
ATLANTA, GA	RALEIGH/DURHAM, NC	356	1441	103	DL	65.46	112	FL	16.88	75
ATLANTA, GA	GULFPORT, MS	352	254	98	FL	69.37	81	FL	69.37	81
CORPUS CHRISTI, TX	DALLAS, TX	352	455	95	WN	68.51	95	AA	27.93	92
BURBANK, CA	RENO, NV	374	177	91	WN	90.65	91	UA	7.94	86
ONTARIO, CA	RENO, NV	394	231	91	WN	86.94	92	UA	11.23	80
LAS VEGAS, NV	SAN JOSE, CA	386	1888	89	WN	56.63	82	WN	56.63	82
SAN FRANCISCO, CA	SANTA ANA, CA	372	1657	89	UA	65.58	91	AA	31.19	83
LAS VEGAS, NV	SACRAMENTO, CA	397	1065	87	WN	90.58	88	HP	6.07	63
CHICAGO, IL	NASHVILLE, TN	395	1259	87	WN	53.5	77	WN	53.5	77
ONTARIO, CA	SAN FRANCISCO, CA	363	609	84	UA	97.89	84	UA	97.89	84
OAKLAND, CA	SANTA ANA, CA	371	2060	80	WN	61.85	80	AS	35.13	80
ONTARIO, CA	SACRAMENTO, CA	389	1737	77	WN	95.79	77	UA	2.08	75
LOS ANGELES, CA	RENO, NV	390	1036	76	AA	45.49	77	UA	19.1	71
LAS VEGAS, NV	SALT LAKE CITY, UT	368	1007	76	WN	69.86	73	WN	69.86	73
BURBANK, CA	SACRAMENTO, CA	358	1568	76	WN	98.47	76	WN	98.47	76
LOS ANGELES, CA	SACRAMENTO, CA	373	2262	74	WN	52.49	75	UA	45.72	72
OAKLAND, CA	ONTARIO, CA	361	1756	72	WN	97.59	72	WN	97.59	72
LONG BEACH, CA	PHOENIX, AZ	355	490	70	HP	98.87	69	HP	98.87	69
HOUSTON, TX	JACKSON, MS	359	323	70	WN	75.5	66	WN	75.5	66
BOISE, ID	SEATTLE, WA	399	904	68	WN	50.11	56	WN	50.11	56
ST. LOUIS, MO	TULSA, OK	351	319	67	WN	52.49	61	WN	52.49	61
SAN DIEGO, CA	TUCSON, AZ	367	555	65	WN	89.27	65	HP	7.79	64
LAS VEGAS, NV	TUCSON, AZ	365	560	62	WN	77.15	62	HP	21.6	60
LOS ANGELES, CA	PHOENIX, AZ	370	3582	60	WN	56.4	61	HP	25.9	54

Table 1

City-Pair		Market Data			Largest Carrier			Lowest Fare Carrier		
		Nonstop Distance	Psgs Per Day	Average One Way Fare	Carrier	Percent Market Share	Average One Way Fare 2/	Carrier	Percent Market Share	Average One Way Fare 2/
BURBANK, CA	PHOENIX, AZ	369	1357	60	WN	62.81	63	HP	36.2	53
BALTIMORE, MD	MANCHESTER, NH	377	1529	60	WN	67.33	58	WN	67.33	58
Mileage Block : 401 to 450 miles										
BALTIMORE, MD	CINCINNATI, OH	430	153	257	DL	82.17	266	NW	2.27	173
CHARLOTTE, NC	PHILADELPHIA, PA	447	507	249	US	94.87	253	DL	2.25	139
CHARLOTTE, NC	CLEVELAND, OH	430	193	245	US	71.77	250	CO	21.2	236
DENVER, CO	WICHITA, KS	419	94	235	UA	98.85	234	UA	98.85	234
COLUMBUS, OH	PHILADELPHIA, PA	405	277	231	US	92.35	235	DL	1.57	91
CLEVELAND, OH	NEW YORK, NY	412	1258	231	CO	76.4	244	AA	14.59	192
MINNEAPOLIS, MN	ST. LOUIS, MO	449	501	229	TW	49.41	235	NW	43.47	235
HARTFORD, CT	PITTSBURGH, PA	406	235	226	US	94.03	229	NW	1.16	127
CHARLESTON, SC	WASHINGTON, DC	444	182	217	US	80.18	221	DL	13.05	211
DALLAS, TX	MEMPHIS, TN	432	306	217	AA	53.37	226	DL	24.59	204
CHARLOTTE, NC	INDIANAPOLIS, IN	428	154	216	US	89.05	216	DL	3.81	173
ATLANTA, GA	INDIANAPOLIS, IN	432	456	214	DL	84.49	221	UA	2.58	158
ATLANTA, GA	COLUMBUS, OH	446	483	200	DL	91.12	203	NW	1.3	145
CINCINNATI, OH	WASHINGTON, DC	411	317	200	DL	88.15	206	CO	3.33	75
DETROIT, MI	WASHINGTON, DC	400	791	195	NW	90	196	CO	1.17	111
KANSAS CITY, MO	MILWAUKEE, WI	436	209	186	YX	83.49	192	DL	1.09	112
NEW YORK, NY	RALEIGH/DURHAM, NC	431	1829	164	US	32.52	153	US	32.52	153
CLEVELAND, OH	RALEIGH/DURHAM, NC	416	181	164	CO	62.96	188	WN	19.3	91
CO SPRINGS, CO	SALT LAKE CITY, UT	410	73	158	DL	81.64	158	UA	15.97	157
CHICAGO, IL	PITTSBURGH, PA	412	1113	155	US	41.48	169	NJ	23.8	95
MIAMI, FL	TALLAHASSEE, FL	407	15	155	US	81.02	164	DL	11.68	84
GREENVILLE, SC	ORLANDO, FL	449	115	144	DL	57.05	156	US	36.23	126
ATLANTA, GA	BATON ROUGE, LA	449	183	143	DL	93.31	142	NW	2.73	95
DALLAS, TX	JACKSON, MS	408	195	131	DL	47.02	137	AA	34.91	124
AUSTIN, TX	NEW ORLEANS, LA	446	212	128	WN	62.76	133	CO	28.33	112
ATLANTA, GA	TAMPA, FL	406	1875	126	DL	74.04	129	FL	24.08	112
ATLANTA, GA	ORLANDO, FL	403	1943	125	DL	67.49	134	FL	30.59	103
BOSTON, MA	WASHINGTON, DC	407	4052	121	US	63.75	126	UA	24.36	94
ATLANTA, GA	DAYTON, OH	432	584	119	DL	65.94	123	FL	30.48	108
AMARILLO, TX	AUSTIN, TX	412	148	118	WN	88.75	119	CO	4.56	68
BALTIMORE, MD	DETROIT, MI	408	928	113	NW	76.24	114	P9	15.76	92
SACRAMENTO, CA	SANTA ANA, CA	404	608	112	HP	96.19	110	HP	96.19	110
PALM SPRINGS, CA	SAN FRANCISCO, CA	421	258	110	AS	84.91	108	AS	84.91	108
ATLANTA, GA	NEW ORLEANS, LA	425	1076	110	DL	72.66	114	FL	25.75	95
HOUSTON, TX	OKLAHOMA CITY, OK	418	613	108	WN	61.12	103	WN	61.12	103
OKLAHOMA CITY, OK	SAN ANTONIO, TX	407	178	108	WN	63.8	117	CO	19.72	75
DALLAS, TX	NEW ORLEANS, LA	437	1300	104	WN	62.78	98	WN	62.78	98
HOUSTON, TX	MIDLAND/ODESSA, TX	440	495	102	WN	73.71	102	CO	25.63	102
BIRMINGHAM, AL	ST. LOUIS, MO	410	198	100	WN	51.4	73	WN	51.4	73
LAS VEGAS, NV	OAKLAND, CA	407	1488	91	WN	95.47	91	HP	2.37	79
GULFPORT, MS	TAMPA, FL	429	108	89	FL	87.75	85	FL	87.75	85
LAS VEGAS, NV	SAN FRANCISCO, CA	414	2310	88	UA	50.26	95	N7	26.8	72
ATLANTIC CITY, NJ	CLEVELAND, OH	406	80	84	NK	96.73	80	NK	96.73	80
CHICAGO, IL	OMAHA, NE	423	951	83	WN	57.41	60	WN	57.41	60
NASHVILLE, TN	RALEIGH/DURHAM, NC	443	518	81	WN	68.48	76	WN	68.48	76
CHICAGO, IL	KANSAS CITY, MO	405	2498	80	WN	48.23	71	WN	48.23	71
OAKLAND, CA	SAN DIEGO, CA	446	1922	80	WN	95.76	79	UA	2.38	73
DETROIT, MI	ST. LOUIS, MO	440	1096	78	WN	37.4	68	WN	37.4	68
SAN DIEGO, CA	SAN JOSE, CA	417	2247	77	WN	66.17	77	AA	31.02	75

Table 1

		Market Data			Largest Carrier			Lowest Fare Carrier		
City-Pair		Nonstop Distance	Psgs Per Day	Average One Way Fare	Carrier	Percent Market Share	Average One Way Fare 2/	Carrier	Percent Market Share	Average One Way Fare 2/
RENO, NV	SANTA ANA, CA	415	438	76	AA	76.09	76	HP	11.82	59
SAN DIEGO, CA	SAN FRANCISCO, CA	447	2870	76	UA	56.19	78	WN	40.32	72
CLEVELAND, OH	NASHVILLE, TN	448	540	72	WN	68.05	67	WN	68.05	67
RENO, NV	SALT LAKE CITY, UT	422	327	69	DL	57.84	72	WN	41.26	64
COLUMBUS, OH	ST. LOUIS, MO	410	445	68	TW	59.74	72	WN	38.45	57
PORTLAND, OR	RENO, NV	444	706	63	AA	50.58	62	AA	50.58	62
Mileage Block : 451 to 500 miles										
CO SPRINGS, CO	OKLAHOMA CITY, OK	461	28	234	UA	53.82	233	AA	33.21	231
DENVER, CO	OKLAHOMA CITY, OK	495	187	228	UA	83.84	235	DL	5.58	159
ATLANTA, GA	LITTLE ROCK, AR	453	201	221	DL	90.33	224	TW	2.05	136
COLUMBUS, OH	NEW YORK, NY	478	968	214	US	38.5	218	HP	31.31	194
ATLANTA, GA	ST. LOUIS, MO	483	660	209	DL	51.32	207	DL	51.32	207
PORTLAND, ME	WASHINGTON, DC	483	127	209	US	90.61	212	CO	3.92	133
HOUSTON, TX	MEMPHIS, TN	470	188	202	CO	47.94	211	NW	36.87	199
CHICAGO, IL	MEMPHIS, TN	491	453	201	UA	45.12	196	UA	45.12	196
BOSTON, MA	RICHMOND, VA	474	211	200	US	80.78	203	UA	10.25	197
CLEVELAND, OH	HARTFORD, CT	475	217	199	CO	70.54	217	WN	13.51	119
BOSTON, MA	PITTSBURGH, PA	496	730	193	US	93.18	195	CO	2.56	94
CHARLOTTE, NC	ORLANDO, FL	468	351	188	US	86.61	187	DL	12.12	185
INDIANAPOLIS, IN	WASHINGTON, DC	498	398	182	US	71.75	199	NW	9.22	118
ATLANTA, GA	RICHMOND, VA	481	552	175	DL	90.28	175	US	7.68	164
CHICAGO, IL	KNOXVILLE, TN	475	223	172	UA	76.3	167	UA	76.3	167
BOSTON, MA	NORFOLK, VA	468	197	169	US	70.85	173	US	70.85	173
DENVER, CO	OMAHA, NE	472	433	166	UA	62.7	172	F9	35.87	153
INDIANAPOLIS, IN	RALEIGH/DURHAM, NC	489	194	165	JI	64.05	172	US	15.79	155
GREENSBORO, NC	NEW YORK, NY	461	941	164	US	51.52	157	US	51.52	157
LOUISVILLE, KY	WASHINGTON, DC	473	206	161	US	81.98	157	US	81.98	157
NEWBURGH, NY	RALEIGH/DURHAM, NC	463	201	158	JI	54.52	187	US	43.91	123
DETROIT, MI	NEW YORK, NY	495	3063	138	NW	66.61	143	P9	10.82	95
DALLAS, TX	MISSION/MCALLEN, TX	468	169	131	AA	82.14	128	AA	82.14	128
CHICAGO, IL	LINCOLN, NE	466	117	129	UA	91.34	124	UA	91.34	124
EUGENE, OR	SAN FRANCISCO, CA	451	265	125	UA	96.84	125	AS	2.91	96
ALBUQUERQUE, NM	SALT LAKE CITY, UT	494	176	124	WN	50.34	119	WN	50.34	119
DETROIT, MI	PHILADELPHIA, PA	453	970	120	NW	59.88	118	NW	59.88	118
SAN ANTONIO, TX	TULSA, OK	483	152	116	WN	69.61	120	CO	11.13	90
DALLAS, TX	HARLINGEN, TX	458	377	115	WN	82.96	116	AA	15.31	109
ALBUQUERQUE, NM	LAS VEGAS, NV	487	597	111	WN	92.34	112	HP	6.43	90
HOUSTON, TX	TULSA, OK	452	860	110	WN	56.87	107	WN	56.87	107
EL PASO, TX	SAN ANTONIO, TX	496	350	107	WN	88.87	109	CO	5.41	70
DETROIT, MI	NASHVILLE, TN	457	777	104	NW	73.76	105	WN	24.1	97
NEW ORLEANS, LA	SAN ANTONIO, TX	495	277	104	WN	67.61	105	CO	24.02	94
BIRMINGHAM, AL	ORLANDO, FL	478	255	102	WN	72.08	91	WN	72.08	91
JACKSONVILLE, FL	NASHVILLE, TN	484	271	101	WN	80.26	95	WN	80.26	95
BUFFALO, NY	CHICAGO, IL	468	690	99	NJ	35.14	76	NJ	35.14	76
BIRMINGHAM, AL	TAMPA, FL	460	302	98	WN	81.18	90	WN	81.18	90
HOUSTON, TX	LUBBOCK, TX	472	389	98	WN	68.11	96	WN	68.11	96
NEW ORLEANS, LA	TAMPA, FL	487	539	93	WN	79.47	89	WN	79.47	89
DALLAS, TX	KANSAS CITY, MO	460	1441	93	AA	79.78	94	NJ	17.2	74
KANSAS CITY, MO	LOUISVILLE, KY	492	154	92	WN	44.63	85	WN	44.63	85
INDIANAPOLIS, IN	KANSAS CITY, MO	451	318	89	WN	67.51	85	TW	20.68	82
ATLANTIC CITY, NJ	MYRTLE BEACH, SC	466	123	86	NK	100	86	NK	100	86
RENO, NV	SAN DIEGO, CA	488	472	84	AA	65.58	79	AA	65.58	79

Table 1

		Market Data			Largest Carrier			Lowest Fare Carrier		
City-Pair		Nonstop Distance	Psgs Per Day	Average One Way Fare	Carrier	Percent Market Share	Average One Way Fare 2/	Carrier	Percent Market Share	Average One Way Fare 2/
SACRAMENTO, CA	SAN DIEGO, CA	480	1891	77	WN	95.65	76	WN	95.65	76
PORTLAND, OR	SACRAMENTO, CA	479	1049	76	WN	67.69	65	WN	67.69	65
CLEVELAND, OH	ST. LOUIS, MO	487	636	75	TW	43.69	81	WN	42.85	62
BALTIMORE, MD	LOUISVILLE, KY	495	684	74	WN	84.58	70	NW	2.49	64
NASHVILLE, TN	NEW ORLEANS, LA	471	495	71	WN	90.93	68	CO	1.8	63
OKLAHOMA CITY, OK	ST. LOUIS, MO	462	336	71	WN	53.93	62	WN	53.93	62
KANSAS CITY, MO	NASHVILLE, TN	491	420	70	WN	87.61	65	WN	87.61	65
LOS ANGELES, CA	TUCSON, AZ	451	1261	64	WN	57.82	63	WN	57.82	63
Mileage Block : 501 to 550 miles										
INDIANAPOLIS, IN	MINNEAPOLIS, MN	503	278	284	NW	87.33	294	UA	4.53	175
CINCINNATI, OH	PHILADELPHIA, PA	507	353	260	DL	60.29	246	DL	60.29	246
CHARLOTTE, NC	DETROIT, MI	500	306	251	NW	46.71	265	US	46.64	245
DENVER, CO	TULSA, OK	541	182	249	UA	75.84	257	AA	17.4	228
DETROIT, MI	HARTFORD, CT	548	243	249	NW	80.27	266	DL	1.21	129
CHARLOTTE, NC	MEMPHIS, TN	512	175	245	US	86.92	245	NW	2.05	198
DETROIT, MI	WHITE PLAINS, NY	505	182	230	NW	93.32	230	US	1.49	208
CHARLOTTE, NC	NEW YORK, NY	538	1410	230	US	78.31	233	CO	15.28	228
CO SPRINGS, CO	KANSAS CITY, MO	540	45	229	UA	80.39	233	NW	6.3	188
CHICAGO, IL	ROCHESTER, NY	528	231	228	UA	52.87	229	AA	40.53	226
CO SPRINGS, CO	TULSA, OK	520	33	220	UA	58.12	226	AA	29.87	224
ATLANTA, GA	PITTSBURGH, PA	526	573	218	DL	54.38	222	US	41.75	213
CHARLOTTE, NC	TAMPA, FL	508	346	199	US	87.15	198	US	87.15	198
DAYTON, OH	NEW YORK, NY	535	269	186	CO	38.93	195	US	37.16	173
DETROIT, MI	MINNEAPOLIS, MN	528	927	180	NW	79.39	195	SY	17.63	110
DENVER, CO	KANSAS CITY, MO	533	855	173	UA	53.57	209	NJ	44.24	127
DETROIT, MI	RALEIGH/DURHAM, NC	501	393	170	NW	64.29	196	WN	24.2	93
CLEVELAND, OH	PROVIDENCE, RI	540	277	162	CO	61.99	179	WN	16.42	126
ATLANTIC CITY, NJ	DETROIT, MI	515	4	159	US	81.82	149	US	81.82	149
ATLANTA, GA	WEST PALM BEACH, FL	545	583	156	DL	97.59	156	DL	97.59	156
CINCINNATI, OH	KANSAS CITY, MO	539	202	152	DL	81.74	153	AA	1.51	105
BALTIMORE, MD	INDIANAPOLIS, IN	516	228	142	US	43.54	145	NW	14.58	134
HARTFORD, CT	RALEIGH/DURHAM, NC	532	321	140	JI	53.46	162	WN	13.29	106
ATLANTA, GA	WASHINGTON, DC	539	3568	131	DL	51.52	164	FL	12.65	92
CHICAGO, IL	LITTLE ROCK, AR	544	320	127	WN	52.7	121	WN	52.7	121
ATLANTA, GA	FT. MYERS, FL	515	420	127	DL	68.24	132	FL	28.47	112
BOISE, ID	SAN FRANCISCO, CA	522	259	126	UA	94.8	126	DL	3.44	114
JACKSONVILLE, FL	NORFOLK, VA	544	129	125	US	63.52	122	US	63.52	122
GREENSBORO, NC	ORLANDO, FL	535	215	121	DL	39.43	125	US	26.14	113
KNOXVILLE, TN	ORLANDO, FL	532	203	119	DL	42.14	135	FL	40.64	101
SACRAMENTO, CA	SALT LAKE CITY, UT	532	403	116	DL	73.72	119	WN	22.32	103
AUSTIN, TX	EL PASO, TX	525	382	116	WN	89.91	119	CO	5.77	76
AMARILLO, TX	HOUSTON, TX	535	256	115	WN	66.64	115	CO	28.87	113
AKRON, OH	ATLANTA, GA	528	336	113	FL	82.62	113	US	7.4	103
ATLANTA, GA	NORFOLK, VA	516	535	100	DL	91.44	99	US	6.28	90
JACKSONVILLE, FL	NEW ORLEANS, LA	513	210	97	WN	74.94	85	WN	74.94	85
BOISE, ID	LAS VEGAS, NV	520	248	96	WN	88.53	93	WN	88.53	93
SALT LAKE CITY, UT	SPOKANE, WA	546	207	95	DL	64.1	97	WN	34.33	89
PHOENIX, AZ	SALT LAKE CITY, UT	507	1381	94	WN	47.56	92	HP	21.46	89
ATLANTA, GA	NEWPORT NEWS/WMSBU	508	254	84	FL	95.25	83	FL	95.25	83
ORLANDO, FL	RALEIGH/DURHAM, NC	534	857	81	DL	50.06	77	WN	10.44	74
OAKLAND, CA	PORTLAND, OR	543	1212	76	AS	54.58	75	AS	54.58	75
Mileage Block : 551 to 600 miles										

Table 1

City-Pair		Market Data			Largest Carrier			Lowest Fare Carrier		
		Nonstop Distance	Psgs Per Day	Average One Way Fare	Carrier	Percent Market Share	Average One Way Fare 2/	Carrier	Percent Market Share	Average One Way Fare 2/
CHARLOTTE, NC	CHICAGO, IL	599	618	256	US	59.43	259	UA	32.85	256
DALLAS, TX	OMAHA, NE	583	205	252	AA	76.62	266	NW	2.81	153
CHICAGO, IL	WICHITA, KS	589	125	241	UA	85.06	229	UA	85.06	229
CHARLOTTE, NC	ST. LOUIS, MO	576	202	238	US	46.88	225	US	46.88	225
PITTSBURGH, PA	ST. LOUIS, MO	554	173	238	TW	64.9	252	US	27.6	224
INDIANAPOLIS, IN	PHILADELPHIA, PA	587	391	235	US	84.01	242	TZ	1.06	164
CINCINNATI, OH	NEW YORK, NY	580	1015	234	DL	75.4	233	DL	75.4	233
DENVER, CO	DES MOINES, IA	590	121	231	UA	92.88	232	TW	1.62	184
CHICAGO, IL	HARRISBURG, PA	595	206	229	UA	56.04	234	US	10.5	196
BOSTON, MA	CLEVELAND, OH	563	481	219	CO	76.65	223	DL	11.38	208
DALLAS, TX	ST. LOUIS, MO	551	858	213	TW	40.39	231	WN	14.42	136
CHICAGO, IL	GREENSBORO, NC	590	278	189	UA	69.88	196	FL	9.2	118
CHICAGO, IL	GREENVILLE, SC	577	199	189	AA	66.9	181	US	10.21	159
CO SPRINGS, CO	DALLAS, TX	592	248	185	AA	72.95	194	DL	18.6	148
ATLANTA, GA	CLEVELAND, OH	554	683	184	DL	48.63	187	CO	46.13	176
CO SPRINGS, CO	PHOENIX, AZ	551	193	178	HP	76.41	186	DL	10.16	117
BIRMINGHAM, AL	DALLAS, TX	597	286	163	AA	44.38	162	DL	30.97	160
NASHVILLE, TN	WASHINGTON, DC	561	269	160	US	86.04	157	US	86.04	157
CHICAGO, IL	TULSA, OK	585	368	156	AA	61.36	167	WN	27.91	139
CINCINNATI, OH	MINNEAPOLIS, MN	596	436	144	NW	45.35	155	DL	43.18	134
ATLANTA, GA	BALTIMORE, MD	576	1187	132	DL	71.22	138	US	25.72	112
BIRMINGHAM, AL	HOUSTON, TX	570	324	131	WN	53.04	126	WN	53.04	126
ATLANTA, GA	FT. LAUDERDALE, FL	581	1588	126	DL	74.34	128	FL	22.99	113
BIRMINGHAM, AL	CHICAGO, IL	570	469	123	WN	55.64	113	WN	55.64	113
SALT LAKE CITY, UT	SAN JOSE, CA	585	374	123	DL	83.24	125	WN	15.22	104
ATLANTA, GA	MIAMI, FL	595	1566	121	DL	53.06	130	FL	12.73	104
SALT LAKE CITY, UT	SAN FRANCISCO, CA	599	700	118	DL	66.31	120	UA	30.77	111
SALT LAKE CITY, UT	SANTA ANA, CA	588	437	116	DL	95.82	114	HP	2.09	107
ATLANTA, GA	DETROIT, MI	594	1549	115	NW	47.59	107	NW	47.59	107
PROVIDENCE, RI	RALEIGH/DURHAM, NC	567	180	113	WN	46.37	103	WN	46.37	103
ALBUQUERQUE, NM	DALLAS, TX	580	980	110	WN	66.53	106	WN	66.53	106
CLEVELAND, OH	MYRTLE BEACH, SC	558	90	109	NK	74.01	88	NK	74.01	88
DALLAS, TX	EL PASO, TX	562	1040	106	WN	60.77	106	WN	60.77	106
ONTARIO, CA	SALT LAKE CITY, UT	558	375	105	DL	72.76	103	DL	72.76	103
EL PASO, TX	LAS VEGAS, NV	584	392	101	WN	62.35	113	HP	37.37	80
OAKLAND, CA	SALT LAKE CITY, UT	588	658	91	WN	98.99	90	WN	98.99	90
MYRTLE BEACH, SC	NEW YORK, NY	558	720	90	NK	71.83	81	NK	71.83	81
RALEIGH/DURHAM, NC	TAMPA, FL	587	551	89	JI	38.12	92	WN	23.39	78
BALTIMORE, MD	NASHVILLE, TN	587	847	89	WN	86.98	87	NW	1.86	80
PORTLAND, OR	SAN FRANCISCO, CA	550	1397	87	UA	58.42	93	AS	40.35	76
NEW ORLEANS, LA	ORLANDO, FL	550	524	86	WN	90.18	82	WN	90.18	82
RENO, NV	SPOKANE, WA	572	160	85	WN	82.89	84	UA	2.58	80
LOS ANGELES, CA	SALT LAKE CITY, UT	590	1967	85	DL	61.93	88	WN	35.45	77
PORTLAND, OR	SAN JOSE, CA	569	1568	79	AS	67.16	80	WN	22.36	72
RENO, NV	SEATTLE, WA	564	1046	74	AS	42.76	70	AS	42.76	70
Mileage Block : 601 to 650 miles										
CHICAGO, IL	RICHMOND, VA	642	291	281	UA	81.55	282	NW	2.02	205
CLEVELAND, OH	MINNEAPOLIS, MN	622	307	280	NW	55.68	290	CO	32.44	290
COLUMBUS, OH	MINNEAPOLIS, MN	627	213	275	NW	77.84	291	UA	7.85	165
BOSTON, MA	DETROIT, MI	632	720	262	NW	85.11	270	CO	3.67	148
DETROIT, MI	MEMPHIS, TN	610	190	251	NW	84.06	267	TW	1.38	135
CHARLOTTE, NC	HARTFORD, CT	643	252	245	US	91.24	252	CO	1.86	130

Table 1	Market Data			Largest Carrier			Lowest Fare Carrier			
	City-Pair	Nonstop Distance	Psgs Per Day	Average One Way Fare	Carrier	Percent Market Share	Average One Way Fare 2/	Carrier	Percent Market Share	Average One Way Fare 2/
HUNTSVILLE/DECATUR	WASHINGTON, DC	612	237	244	US	71.04	233	US	71.04	233
DETROIT, MI	PROVIDENCE, RI	615	200	235	NW	64.54	270	WN	25.82	143
DALLAS, TX	NASHVILLE, TN	631	482	229	AA	60.62	245	WN	10.49	196
CHICAGO, IL	SYRACUSE, NY	608	217	227	UA	51.35	236	AA	35.07	215
DALLAS, TX	DES MOINES, IA	624	140	205	AA	73.2	205	TW	14.87	200
GREENVILLE, SC	NEW YORK, NY	609	422	195	US	46.44	176	US	46.44	176
CHARLOTTE, NC	FT. LAUDERDALE, FL	632	227	191	US	85.61	188	US	85.61	188
DALLAS, TX	DENVER, CO	641	1751	187	UA	38.99	179	F9	13.45	168
DENVER, CO	TUCSON, AZ	639	259	187	UA	67.55	209	HP	27.5	129
GRAND RAPIDS, MI	NEW YORK, NY	614	245	181	NW	31.43	175	UA	12.01	172
CHARLESTON, SC	NEW YORK, NY	628	458	180	CO	38.02	188	DL	17.6	170
COLUMBIA, SC	NEW YORK, NY	615	320	179	US	41.79	159	US	41.79	159
CHICAGO, IL	WASHINGTON, DC	601	2728	176	UA	61.5	191	US	16.28	115
NEW ORLEANS, LA	ST. LOUIS, MO	604	310	175	TW	74.21	179	WN	19.54	153
BOSTON, MA	GREENSBORO, NC	646	161	168	US	64.22	174	DL	11.05	171
DENVER, CO	PHOENIX, AZ	602	1708	168	UA	51.74	177	HP	23.17	157
MEMPHIS, TN	RALEIGH/DURHAM, NC	635	194	151	JI	36.92	139	JI	36.92	139
BIRMINGHAM, AL	DETROIT, MI	626	175	149	NW	69.61	145	NW	69.61	145
HOUSTON, TX	KANSAS CITY, MO	644	589	146	CO	50.72	149	WN	41.24	141
ALBUQUERQUE, NM	AUSTIN, TX	614	176	145	WN	55.99	150	CO	14.88	122
DETROIT, MI	KANSAS CITY, MO	629	507	145	NW	70.07	154	WN	22.32	117
ALBUQUERQUE, NM	SAN ANTONIO, TX	610	177	144	WN	60.6	152	DL	13.03	119
JACKSONVILLE, FL	WASHINGTON, DC	634	339	143	US	64.7	150	DL	23.06	126
KNOXVILLE, TN	NEW YORK, NY	646	310	138	US	46.01	132	CO	15.3	114
BOSTON, MA	COLUMBUS, OH	640	524	136	HP	62.26	132	HP	62.26	132
DENVER, CO	LAS VEGAS, NV	629	1332	134	UA	56.21	140	HP	10.37	86
ATLANTA, GA	CHICAGO, IL	604	3599	133	DL	49.15	143	FL	12.75	107
BOSTON, MA	RALEIGH/DURHAM, NC	612	741	132	JI	50.82	149	US	38.31	109
EL PASO, TX	SAN DIEGO, CA	636	193	126	WN	85.65	128	HP	13.56	103
CO SPRINGS, CO	LAS VEGAS, NV	604	291	125	AA	79.99	122	HP	9.74	110
ALBUQUERQUE, NM	SAN DIEGO, CA	628	369	124	WN	81.14	130	HP	15.16	92
ALBUQUERQUE, NM	ONTARIO, CA	632	194	124	WN	65.18	132	HP	31.53	99
COLUMBUS, OH	KANSAS CITY, MO	634	210	122	WN	45.62	119	TW	27.27	113
MILWAUKEE, WI	WASHINGTON, DC	628	557	121	YX	60.81	128	US	24.27	97
SALT LAKE CITY, UT	SAN DIEGO, CA	626	626	118	DL	61.98	124	WN	30.66	106
SALT LAKE CITY, UT	TUCSON, AZ	601	156	118	DL	47.39	115	HP	27.14	110
NASHVILLE, TN	TAMPA, FL	612	490	113	WN	85.21	105	WN	85.21	105
ATLANTA, GA	FLINT, MI	644	174	110	FL	87.34	109	FL	87.34	109
PHOENIX, AZ	SACRAMENTO, CA	647	864	106	WN	54.47	112	HP	40.69	96
BALTIMORE, MD	CHICAGO, IL	611	2706	106	WN	36.84	93	US	18.12	83
NASHVILLE, TN	ORLANDO, FL	616	664	103	DL	54.68	100	DL	54.68	100
PHOENIX, AZ	SAN JOSE, CA	621	1308	103	WN	54.7	97	WN	54.7	97
CHICAGO, IL	RALEIGH/DURHAM, NC	647	1163	102	AA	44.78	98	WN	19.85	86
PORTLAND, OR	SALT LAKE CITY, UT	630	732	99	DL	69.06	100	WN	28.87	89
OAKLAND, CA	PHOENIX, AZ	646	1105	98	WN	67.07	100	HP	29.51	91
DETROIT, MI	MYRTLE BEACH, SC	636	213	96	NK	92.17	87	NK	92.17	87
SACRAMENTO, CA	SPOKANE, WA	649	191	95	AS	56.47	92	AS	56.47	92
SACRAMENTO, CA	SEATTLE, WA	605	1074	90	AS	63.3	90	WN	33.57	87
PHOENIX, AZ	RENO, NV	601	503	88	WN	52.14	94	HP	44.86	79
Mileage Block : 651 to 700 miles										
ALLENTOWN, PA	CHICAGO, IL	655	131	270	UA	84.56	274	DL	1.24	170
MINNEAPOLIS, MN	NASHVILLE, TN	696	190	230	NW	77.73	246	TW	7.82	145

Table 1

City-Pair		Market Data			Largest Carrier			Lowest Fare Carrier		
		Nonstop Distance	Psgs Per Day	Average One Way Fare	Carrier	Percent Market Share	Average One Way Fare 2/	Carrier	Percent Market Share	Average One Way Fare 2/
BOISE, ID	DENVER, CO	650	175	230	UA	76.52	240	DL	17.7	197
INDIANAPOLIS, IN	NEW YORK, NY	659	888	225	US	40.3	225	US	40.3	225
LOUISVILLE, KY	NEW YORK, NY	657	392	223	US	48.2	219	US	48.2	219
BIRMINGHAM, AL	WASHINGTON, DC	651	124	219	DL	49.08	262	US	39	184
CHICAGO, IL	PHILADELPHIA, PA	678	2147	213	UA	35.57	240	TZ	15.55	119
MILWAUKEE, WI	PHILADELPHIA, PA	690	299	207	YX	50.93	209	US	32.99	209
CHARLOTTE, NC	NEW ORLEANS, LA	652	156	204	US	77.77	202	US	77.77	202
NASHVILLE, TN	PHILADELPHIA, PA	675	324	202	US	81.96	201	NW	9.15	170
ATLANTA, GA	MILWAUKEE, WI	669	394	198	DL	54.26	202	YX	33.2	195
CHICAGO, IL	COLUMBIA, SC	667	142	197	US	47.52	149	US	47.52	149
ATLANTA, GA	TULSA, OK	674	213	194	DL	78.47	197	AA	14.85	177
CHARLOTTE, NC	MIAMI, FL	650	245	183	US	84.95	183	DL	11.01	181
MIAMI, FL	NEW ORLEANS, LA	674	209	174	AA	82.7	173	FL	4.99	154
ORLANDO, FL	RICHMOND, VA	668	156	170	US	49.55	162	US	49.55	162
RALEIGH/DURHAM, NC	ST. LOUIS, MO	667	277	162	TW	60.3	177	WN	12.83	123
CHICAGO, IL	OKLAHOMA CITY, OK	693	321	156	AA	47.66	178	TW	19.17	114
KANSAS CITY, MO	NEW ORLEANS, LA	691	223	150	WN	23.54	150	TW	20.56	143
EL PASO, TX	HOUSTON, TX	677	378	146	WN	59.51	148	CO	36.32	143
MEMPHIS, TN	ORLANDO, FL	683	325	142	NW	69.64	144	FL	10.35	127
FT. LAUDERDALE, FL	NEW ORLEANS, LA	673	296	140	WN	82.35	134	WN	82.35	134
MEMPHIS, TN	TAMPA, FL	656	221	139	NW	75.95	134	NW	75.95	134
ATLANTA, GA	KANSAS CITY, MO	692	930	135	DL	75.04	142	NJ	16.19	99
ATLANTA, GA	HOUSTON, TX	692	1518	133	DL	48.78	133	CO	38.1	132
NORFOLK, VA	ORLANDO, FL	656	200	132	US	51.9	125	JI	11.5	110
HOUSTON, TX	ST. LOUIS, MO	687	858	126	WN	54.2	122	WN	54.2	122
DENVER, CO	MINNEAPOLIS, MN	680	1376	126	UA	48.48	126	UA	48.48	126
CLEVELAND, OH	KANSAS CITY, MO	694	266	125	CO	67.59	121	WN	19.6	119
EL PASO, TX	ONTARIO, CA	671	109	124	WN	67.26	138	HP	31.44	96
ATLANTA, GA	PHILADELPHIA, PA	665	2251	121	DL	60.99	123	US	28.08	118
HOUSTON, TX	NASHVILLE, TN	670	579	121	WN	62.23	117	WN	62.23	117
ALBUQUERQUE, NM	LOS ANGELES, CA	677	842	120	WN	87.28	121	HP	8.65	94
CHICAGO, IL	JACKSON, MS	666	258	119	WN	68.06	108	WN	68.06	108
BOISE, ID	LOS ANGELES, CA	674	280	118	AS	55.28	115	AS	55.28	115
FT. LAUDERDALE, FL	RALEIGH/DURHAM, NC	680	429	117	JI	58.95	117	WN	12.76	107
BALTIMORE, MD	BIRMINGHAM, AL	682	460	103	WN	78.47	99	WN	78.47	99
BALTIMORE, MD	JACKSONVILLE, FL	663	623	99	US	51.83	100	WN	43.48	94
SALT LAKE CITY, UT	SEATTLE, WA	689	984	98	DL	61.49	101	WN	36.16	89
PHOENIX, AZ	SAN FRANCISCO, CA	651	1697	98	UA	41.14	100	WN	30.93	93
SAN FRANCISCO, CA	SEATTLE, WA	678	2407	94	UA	58.32	100	AS	40.13	84
SAN JOSE, CA	SEATTLE, WA	697	1823	80	AS	67.09	81	WN	16.28	72
OAKLAND, CA	SEATTLE, WA	671	1918	80	AS	59.62	80	WN	39.45	78
Mileage Block : 701 to 750 miles										
CHICAGO, IL	WHITE PLAINS, NY	738	479	319	UA	60	331	AA	33.65	298
MEMPHIS, TN	MINNEAPOLIS, MN	700	182	257	NW	87.78	267	DL	6.2	130
BOSTON, MA	CHARLOTTE, NC	727	473	233	US	91.46	233	CO	1.31	135
ALBANY, NY	CHICAGO, IL	724	224	229	UA	43.34	226	UA	43.34	226
DALLAS, TX	LOUISVILLE, KY	733	273	223	AA	45.34	231	DL	30.45	222
CHICAGO, IL	NEW YORK, NY	728	7336	212	UA	35.95	226	CO	18.19	189
CHICAGO, IL	NORFOLK, VA	717	247	210	UA	67.62	222	DL	10.69	194
MILWAUKEE, WI	NEW YORK, NY	734	844	200	YX	65.41	215	CO	13.93	174
CO SPRINGS, CO	SAN ANTONIO, TX	732	89	192	AA	42.61	193	DL	19.66	177
AUSTIN, TX	ST. LOUIS, MO	718	210	176	TW	45.97	199	WN	38.99	146

Table 1

		Market Data			Largest Carrier			Lowest Fare Carrier		
City-Pair		Nonstop Distance	Psgs Per Day	Average One Way Fare	Carrier	Percent Market Share	Average One Way Fare 2/	Carrier	Percent Market Share	Average One Way Fare 2/
MIAMI, FL	RALEIGH/DURHAM, NC	700	158	174	AA	61.45	173	AA	61.45	173
ST. LOUIS, MO	WASHINGTON, DC	709	761	168	TW	67.87	183	US	25.69	122
JACKSONVILLE, FL	PHILADELPHIA, PA	742	360	161	US	76.61	166	DL	11.68	155
NEW YORK, NY	SAVANNAH, GA	708	416	158	CO	33.39	165	US	32.45	139
MINNEAPOLIS, MN	PITTSBURGH, PA	726	369	157	NW	52.55	172	US	33.44	142
KANSAS CITY, MO	SAN ANTONIO, TX	707	224	147	YX	44.08	143	YX	44.08	143
ATLANTA, GA	DALLAS, TX	732	2709	143	DL	48.53	155	AA	41.13	129
INDIANAPOLIS, IN	NEW ORLEANS, LA	709	160	142	WN	35.03	142	NW	16.12	125
BUFFALO, NY	MINNEAPOLIS, MN	735	160	141	NW	48.98	145	NJ	27.59	99
ALBUQUERQUE, NM	HOUSTON, TX	745	440	137	CO	49.52	138	WN	45.02	135
ALBUQUERQUE, NM	KANSAS CITY, MO	719	187	135	WN	74.71	137	UA	11.28	112
CO SPRINGS, CO	MINNEAPOLIS, MN	726	172	133	NW	79.21	132	NW	79.21	132
BOISE, ID	PHOENIX, AZ	736	242	132	WN	53.24	131	DL	28.6	131
SAN JOSE, CA	TUCSON, AZ	722	215	128	WN	42.74	137	UA	23.62	119
EL PASO, TX	LOS ANGELES, CA	714	441	126	WN	85.66	129	HP	12.51	93
LOUISVILLE, KY	TAMPA, FL	728	259	117	WN	58.51	106	WN	58.51	106
OAKLAND, CA	TUCSON, AZ	748	222	115	WN	59.08	120	HP	21.49	99
FRESNO, CA	SEATTLE, WA	748	192	113	AS	87.78	110	AS	87.78	110
LOUISVILLE, KY	ORLANDO, FL	718	448	109	DL	68.48	109	WN	25.33	107
BALTIMORE, MD	ST. LOUIS, MO	737	942	107	TW	55.26	113	WN	36.48	95
BOSTON, MA	MYRTLE BEACH, SC	739	169	107	US	67.52	102	US	67.52	102
ATLANTA, GA	BUFFALO, NY	712	561	100	DL	54.33	100	US	13.5	93
SAN JOSE, CA	SPOKANE, WA	742	116	96	AS	66.51	94	AS	66.51	94
SAN FRANCISCO, CA	SPOKANE, WA	733	225	94	UA	76	96	AS	19.74	82
OAKLAND, CA	SPOKANE, WA	723	243	84	WN	79.89	81	WN	79.89	81
Mileage Block : 751 to 800 miles										
DENVER, CO	ST. LOUIS, MO	770	451	276	TW	53.54	281	TW	53.54	281
AUSTIN, TX	DENVER, CO	769	309	265	UA	51.04	278	UA	51.04	278
BOSTON, MA	CINCINNATI, OH	752	413	256	DL	87.75	266	NW	3.03	113
NASHVILLE, TN	NEW YORK, NY	764	735	247	AA	45.39	237	AA	45.39	237
DALLAS, TX	INDIANAPOLIS, IN	762	385	245	AA	67.01	266	CO	10.11	191
CHARLESTON, SC	CHICAGO, IL	760	117	220	DL	47.31	242	US	40.28	190
ATLANTA, GA	ROCHESTER, NY	750	163	218	DL	76.52	221	US	11.91	215
DENVER, CO	SAN ANTONIO, TX	795	282	214	UA	48.67	225	CO	12.12	188
ATLANTA, GA	SYRACUSE, NY	794	190	206	DL	74.94	206	DL	74.94	206
ATLANTA, GA	OKLAHOMA CITY, OK	761	218	206	DL	75.88	210	AA	14	176
JACKSONVILLE, FL	ST. LOUIS, MO	754	155	193	TW	68.58	183	TW	68.58	183
CO SPRINGS, CO	ONTARIO, CA	793	46	187	HP	48.95	161	HP	48.95	161
CINCINNATI, OH	ORLANDO, FL	756	354	184	DL	92.66	188	CO	1.01	108
CINCINNATI, OH	TAMPA, FL	773	285	182	DL	87.4	188	US	5.04	110
HOUSTON, TX	TAMPA, FL	787	490	169	CO	64.69	173	WN	22.63	158
ST. LOUIS, MO	SAN ANTONIO, TX	786	321	169	TW	60.83	181	WN	30.65	140
ATLANTA, GA	NEW YORK, NY	756	6793	160	DL	64.99	173	CO	19.56	129
HOUSTON, TX	OMAHA, NE	782	190	156	CO	59.42	156	WN	15.13	146
HOUSTON, TX	LOUISVILLE, KY	789	202	153	CO	52.82	152	WN	19.51	149
MEMPHIS, TN	WASHINGTON, DC	762	488	153	NW	63.85	161	DL	14.22	141
CHICAGO, IL	SAVANNAH, GA	773	120	151	DL	46.2	155	US	26.31	137
CHICAGO, IL	HARTFORD, CT	783	1030	147	UA	42.33	152	WN	12.04	106
DALLAS, TX	KNOXVILLE, TN	772	205	136	AA	59.63	135	DL	22.86	134
NEW ORLEANS, LA	RALEIGH/DURHAM, NC	780	234	134	JI	45.43	136	JI	45.43	136
FT. LAUDERDALE, FL	NASHVILLE, TN	793	388	126	WN	78.81	119	WN	78.81	119
LAS VEGAS, NV	LUBBOCK, TX	776	116	124	WN	97.74	123	WN	97.74	123

Table 1

City-Pair		Market Data			Largest Carrier			Lowest Fare Carrier		
		Nonstop Distance	Psgs Per Day	Average One Way Fare	Carrier	Percent Market Share	Average One Way Fare 2/	Carrier	Percent Market Share	Average One Way Fare 2/
CHICAGO, IL	MYRTLE BEACH, SC	754	142	122	US	50.57	123	DL	39.57	119
AUSTIN, TX	NASHVILLE, TN	753	251	121	WN	74.05	123	CO	7.41	76
AMARILLO, TX	LAS VEGAS, NV	758	169	117	WN	98.07	115	WN	98.07	115
SAN FRANCISCO, CA	TUCSON, AZ	752	198	116	UA	45.93	115	HP	36.37	112
ORLANDO, FL	WASHINGTON, DC	758	1898	114	DL	42.2	107	DL	42.2	107
LAS VEGAS, NV	MIDLAND/ODESSA, TX	797	155	112	WN	93.55	111	HP	5.33	102
CHICAGO, IL	ISLIP/LONG ISLAND, NY	773	417	108	AA	52.02	107	WN	44.54	105
BALTIMORE, MD	ORLANDO, FL	787	1551	104	US	58.4	106	WN	36.2	94
LAS VEGAS, NV	PORTLAND, OR	762	1285	94	AS	37.48	92	AS	37.48	92
Mileage Block : 801 to 850 miles										
CINCINNATI, OH	DALLAS, TX	812	314	310	DL	61.53	332	AA	29.46	293
PHILADELPHIA, PA	ST. LOUIS, MO	813	392	274	TW	54.32	289	TW	54.32	289
CHARLOTTE, NC	KANSAS CITY, MO	810	137	253	US	77.03	263	TW	6.92	160
DALLAS, TX	TUCSON, AZ	813	226	250	AA	75.65	267	DL	13.4	184
DENVER, CO	SANTA ANA, CA	846	516	233	UA	88.11	242	DL	5.85	135
CO SPRINGS, CO	HOUSTON, TX	811	142	229	CO	67.54	222	CO	67.54	222
DENVER, CO	SPOKANE, WA	837	146	227	UA	76.57	233	DL	21.12	204
CHICAGO, IL	DALLAS, TX	800	2929	224	AA	56.15	261	TZ	16.74	117
ATLANTA, GA	AUSTIN, TX	812	375	224	DL	73.74	232	CO	11.43	187
ATLANTA, GA	OMAHA, NE	822	206	224	DL	72.98	239	UA	13.06	183
BOSTON, MA	INDIANAPOLIS, IN	818	297	210	US	47.81	202	NW	12.94	196
DENVER, CO	ONTARIO, CA	819	263	205	UA	76.95	219	HP	12.38	170
DENVER, CO	RENO, NV	805	181	199	UA	63.54	207	DL	23	198
CO SPRINGS, CO	SAN DIEGO, CA	818	101	192	UA	41.4	225	HP	34.41	155
MADISON, WI	NEW YORK, NY	809	225	187	UA	37.73	179	UA	37.73	179
CO SPRINGS, CO	LOS ANGELES, CA	833	257	184	AA	53.23	185	HP	10.31	135
JACKSONVILLE, FL	NEW YORK, NY	834	1006	172	US	41.31	158	US	41.31	158
MIAMI, FL	NASHVILLE, TN	807	132	163	DL	51.69	160	AA	38.85	157
CHICAGO, IL	NEW ORLEANS, LA	837	893	162	UA	36.01	165	WN	20.55	139
ORLANDO, FL	PITTSBURGH, PA	834	632	155	US	85.42	155	NW	1.55	129
HOUSTON, TX	JACKSONVILLE, FL	818	222	155	CO	63.29	152	CO	63.29	152
OKLAHOMA CITY, OK	PHOENIX, AZ	833	263	153	WN	78.75	154	DL	7.15	127
HOUSTON, TX	INDIANAPOLIS, IN	846	363	152	CO	58.31	157	WN	24.27	141
CHICAGO, IL	MANCHESTER, NH	838	621	150	WN	47.43	118	WN	47.43	118
DETROIT, MI	JACKSONVILLE, FL	815	224	149	NW	70.88	147	NW	70.88	147
PHOENIX, AZ	SAN ANTONIO, TX	843	349	140	WN	53.94	150	HP	27.5	128
CHICAGO, IL	PROVIDENCE, RI	849	1051	135	UA	35.04	141	WN	30.17	119
DAYTON, OH	ORLANDO, FL	809	261	125	FL	32.74	116	FL	32.74	116
TAMPA, FL	WASHINGTON, DC	812	1073	124	US	57.46	122	UA	28.25	119
LAS VEGAS, NV	SPOKANE, WA	807	217	124	WN	51.78	127	DL	16.11	113
ONTARIO, CA	PORTLAND, OR	838	528	123	AS	71.14	120	AS	71.14	120
BURBANK, CA	PORTLAND, OR	817	423	122	AS	76.09	121	AS	76.09	121
NASHVILLE, TN	SAN ANTONIO, TX	823	215	121	WN	65.23	116	WN	65.23	116
LOS ANGELES, CA	PORTLAND, OR	834	1583	120	AS	46.71	116	AS	46.71	116
INDIANAPOLIS, IN	TAMPA, FL	840	643	117	TZ	46.16	106	TZ	46.16	106
DAYTON, OH	TAMPA, FL	829	209	117	DL	43.37	121	US	21.27	106
INDIANAPOLIS, IN	ORLANDO, FL	828	1027	113	DL	48.61	116	TZ	29.63	103
COLUMBUS, OH	TAMPA, FL	829	696	111	DL	55.12	110	WN	32.85	106
COLUMBUS, OH	ORLANDO, FL	802	835	110	DL	69.51	111	WN	17.34	99
BALTIMORE, MD	TAMPA, FL	842	1226	103	US	60.28	101	WN	33.53	100
Mileage Block : 851 to 900 miles										
NEW YORK, NY	ST. LOUIS, MO	882	1163	294	TW	66.4	323	CO	14.68	278

Table 1

City-Pair		Market Data			Largest Carrier			Lowest Fare Carrier		
		Nonstop Distance	Psgs Per Day	Average One Way Fare	Carrier	Percent Market Share	Average One Way Fare 2/	Carrier	Percent Market Share	Average One Way Fare 2/
BOSTON, MA	CHICAGO, IL	867	1928	271	UA	48.69	279	AA	40.07	277
DENVER, CO	HOUSTON, TX	862	923	266	CO	45.79	285	UA	37.59	256
CINCINNATI, OH	HOUSTON, TX	873	90	254	CO	49.76	268	CO	49.76	268
DENVER, CO	MEMPHIS, TN	873	156	250	NW	42.18	229	NW	42.18	229
DALLAS, TX	PHOENIX, AZ	868	1092	249	AA	48.68	285	WN	19.01	180
BURBANK, CA	DENVER, CO	851	118	229	UA	89.14	233	HP	9.11	171
ALBANY, NY	ATLANTA, GA	852	244	229	DL	79.98	235	US	11.21	203
DALLAS, TX	MILWAUKEE, WI	853	348	225	YX	65.88	237	TW	3.59	165
DENVER, CO	LOS ANGELES, CA	862	1956	208	UA	73.64	218	F9	18.81	187
BIRMINGHAM, AL	NEW YORK, NY	862	381	208	DL	35.67	219	CO	25.11	202
DENVER, CO	MILWAUKEE, WI	896	298	205	UA	47.55	205	NW	10.99	202
MEMPHIS, TN	PHILADELPHIA, PA	875	244	200	NW	71.09	197	DL	14.21	183
ATLANTA, GA	SAN ANTONIO, TX	874	435	196	DL	75.64	207	CO	13.39	140
DALLAS, TX	DAYTON, OH	861	240	195	AA	53.13	200	AA	53.13	200
BOSTON, MA	MILWAUKEE, WI	860	336	195	YX	66.69	204	NW	10.03	171
DENVER, CO	SAN DIEGO, CA	853	878	191	UA	69.1	206	F9	18.89	170
CHICAGO, IL	DENVER, CO	888	2378	187	UA	55.88	211	TZ	11.81	128
CINCINNATI, OH	FT. MYERS, FL	880	177	181	DL	93.37	182	NW	1.84	147
MEMPHIS, TN	MIAMI, FL	861	181	166	NW	69.93	166	NW	69.93	166
HOUSTON, TX	ORLANDO, FL	853	788	163	CO	59.74	168	WN	23.73	151
DALLAS, TX	MINNEAPOLIS, MN	852	1218	158	NW	46.85	162	NW	46.85	162
PITTSBURGH, PA	TAMPA, FL	873	533	154	US	85.71	155	DL	8.64	126
ALBUQUERQUE, NM	SAN JOSE, CA	871	206	151	WN	57.69	153	HP	23.02	130
ORLANDO, FL	PHILADELPHIA, PA	861	1559	151	US	79.04	155	JI	4.2	114
FT. MYERS, FL	WASHINGTON, DC	892	228	149	DL	34.64	166	AA	11.23	134
CHICAGO, IL	JACKSONVILLE, FL	865	578	148	UA	34.87	169	WN	19.19	106
WASHINGTON, DC	WEST PALM BEACH, FL	857	441	146	US	74.65	144	US	74.65	144
ALBUQUERQUE, NM	OAKLAND, CA	889	379	145	WN	88.02	146	HP	5.45	117
FT. LAUDERDALE, FL	LOUISVILLE, KY	897	172	144	DL	55.02	140	DL	55.02	140
ST. LOUIS, MO	TAMPA, FL	869	508	144	TW	59.71	148	WN	27.44	136
DAYTONA BEACH, FL	NEW YORK, NY	884	203	144	CO	67.47	133	CO	67.47	133
CLEVELAND, OH	ORLANDO, FL	895	686	143	CO	68.59	143	CO	68.59	143
ALBUQUERQUE, NM	SAN FRANCISCO, CA	897	212	143	WN	34.55	146	HP	27.21	127
AUSTIN, TX	PHOENIX, AZ	868	568	138	WN	46.65	145	HP	42.24	126
ORLANDO, FL	ST. LOUIS, MO	880	711	138	TW	66.29	142	WN	23.35	125
PORTLAND, OR	SANTA ANA, CA	859	551	133	AS	78.44	133	UA	6.79	126
ATLANTA, GA	HARTFORD, CT	859	918	131	DL	82.11	133	CO	3.01	102
HARRISBURG, PA	ORLANDO, FL	852	170	130	US	66.37	126	US	66.37	126
PALM SPRINGS, CA	PORTLAND, OR	874	216	126	AS	81.87	124	AS	81.87	124
BALTIMORE, MD	WEST PALM BEACH, FL	883	326	125	US	90.24	121	US	90.24	121
BALTIMORE, MD	JACKSON, MS	889	192	122	WN	85.25	116	WN	85.25	116
INDIANAPOLIS, IN	SARASOTA, FL	877	213	119	TZ	79.73	112	NW	1.12	108
AKRON, OH	ORLANDO, FL	861	204	115	FL	73.19	114	US	15.05	113
ATLANTIC CITY, NJ	ORLANDO, FL	852	444	111	NK	99.09	109	NK	99.09	109
LAS VEGAS, NV	SEATTLE, WA	866	1888	107	AS	44.86	114	AA	12.36	95
Mileage Block : 901 to 950 miles										
DENVER, CO	SAN JOSE, CA	948	591	296	UA	89.76	308	DL	6.45	150
BALTIMORE, MD	MINNEAPOLIS, MN	936	271	293	NW	81.41	304	TW	3.29	137
CHARLOTTE, NC	DALLAS, TX	937	423	292	AA	51.89	288	AA	51.89	288
CHARLOTTE, NC	HOUSTON, TX	914	254	281	US	51.84	286	DL	11.46	230
CHARLOTTE, NC	MINNEAPOLIS, MN	931	224	278	NW	47.31	302	US	37.62	277
COLUMBUS, OH	DALLAS, TX	927	364	277	AA	73.4	289	US	1.55	200

Table 1

City-Pair		Market Data			Largest Carrier			Lowest Fare Carrier		
		Nonstop Distance	Psgs Per Day	Average One Way Fare	Carrier	Percent Market Share	Average One Way Fare 2/	Carrier	Percent Market Share	Average One Way Fare 2/
CHICAGO, IL	PORTLAND, ME	901	113	265	UA	78.37	269	CO	1.44	187
CO SPRINGS, CO	SAN JOSE, CA	944	114	254	UA	48.9	277	HP	22.64	205
ATLANTA, GA	PROVIDENCE, RI	904	175	250	DL	77.58	257	US	11.58	209
MINNEAPOLIS, MN	WASHINGTON, DC	921	1041	226	NW	71.89	252	SY	14.91	134
CHICAGO, IL	CO SPRINGS, CO	912	170	220	UA	83.55	226	DL	3.44	120
DENVER, CO	SACRAMENTO, CA	910	376	219	UA	81.18	235	DL	10.78	150
DALLAS, TX	TAMPA, FL	929	852	201	AA	49.9	220	DL	38.62	186
ATLANTA, GA	MINNEAPOLIS, MN	906	1068	200	NW	48.11	194	NW	48.11	194
CINCINNATI, OH	FT. LAUDERDALE, FL	933	208	190	DL	90.61	191	NW	1.04	143
CINCINNATI, OH	MIAMI, FL	949	232	174	DL	88.52	174	NW	2.44	136
CHICAGO, IL	HOUSTON, TX	926	1835	173	CO	34.01	183	WN	19.98	144
DALLAS, TX	JACKSONVILLE, FL	920	333	168	DL	53.27	164	DL	53.27	164
PHILADELPHIA, PA	TAMPA, FL	920	929	165	US	76.24	170	JI	4.62	126
DETROIT, MI	NEW ORLEANS, LA	926	290	162	NW	69.73	166	DL	10.88	147
BOSTON, MA	NASHVILLE, TN	944	215	162	US	49.49	165	AA	10.89	138
BALTIMORE, MD	FT. MYERS, FL	921	102	158	US	52.83	140	US	52.83	140
PHOENIX, AZ	TULSA, OK	935	267	155	WN	77.09	155	DL	5.33	136
DETROIT, MI	OKLAHOMA CITY, OK	902	134	154	TW	31.44	133	TW	31.44	133
ORLANDO, FL	TOLEDO, OH	923	47	152	DL	45.35	149	US	26.28	141
MIAMI, FL	WASHINGTON, DC	920	1257	152	AA	49.86	170	US	22.88	121
CLEVELAND, OH	TAMPA, FL	927	511	150	CO	66.5	145	CO	66.5	145
ALBUQUERQUE, NM	ST. LOUIS, MO	935	158	150	TW	59.12	153	WN	33.26	140
COLUMBUS, OH	FT. MYERS, FL	931	189	148	DL	58.23	155	US	22.96	132
KANSAS CITY, MO	SALT LAKE CITY, UT	920	266	142	DL	68.7	144	WN	16.63	131
KANSAS CITY, MO	RALEIGH/DURHAM, NC	905	252	139	YX	42.02	140	WN	12.6	127
FT. MYERS, FL	INDIANAPOLIS, IN	946	458	136	TZ	80.07	132	TZ	80.07	132
ATLANTA, GA	BOSTON, MA	946	2421	134	DL	70.76	142	FL	11.17	99
BALTIMORE, MD	MIAMI, FL	946	396	134	US	69.66	131	US	69.66	131
NASHVILLE, TN	PROVIDENCE, RI	908	196	134	WN	75.32	127	WN	75.32	127
LOS ANGELES, CA	SPOKANE, WA	945	250	133	AS	49.61	133	AS	49.61	133
BURBANK, CA	SEATTLE, WA	937	654	131	AS	77.51	130	AS	77.51	130
BLOOMINGTON, IL	ORLANDO, FL	937	146	128	FL	85.27	122	FL	85.27	122
PORTLAND, OR	SAN DIEGO, CA	933	831	128	AS	67.31	129	UA	11.63	123
FT. LAUDERDALE, FL	WASHINGTON, DC	900	905	125	US	46.53	127	DL	39.8	119
NEW YORK, NY	ORLANDO, FL	944	6368	122	DL	43.61	121	DL	43.61	121
ATLANTIC CITY, NJ	WEST PALM BEACH, FL	936	174	121	NK	99.56	121	NK	99.56	121
BALTIMORE, MD	FT. LAUDERDALE, FL	925	1070	116	US	54.26	116	WN	38.47	112
ALLENTOWN, PA	ORLANDO, FL	906	407	114	DL	48.53	113	DL	48.53	113
HARTFORD, CT	JACKSONVILLE, FL	936	202	109	US	50.94	99	US	50.94	99
ATLANTIC CITY, NJ	TAMPA, FL	914	280	103	NK	98.83	102	NK	98.83	102
Mileage Block : 951 to 1000 miles										
MINNEAPOLIS, MN	PHILADELPHIA, PA	980	517	294	NW	59.84	305	US	27.18	295
DENVER, CO	OAKLAND, CA	957	327	271	UA	92.04	277	HP	5.83	159
HARTFORD, CT	ST. LOUIS, MO	958	205	267	TW	60.49	334	WN	18.59	134
MINNEAPOLIS, MN	RALEIGH/DURHAM, NC	982	215	262	NW	66.24	282	CO	2.38	164
DALLAS, TX	SALT LAKE CITY, UT	989	434	241	DL	49.14	244	DL	49.14	244
DENVER, CO	INDIANAPOLIS, IN	977	330	225	UA	75.46	231	CO	1.61	109
DALLAS, TX	DETROIT, MI	987	911	220	AA	54.85	222	AA	54.85	222
DENVER, CO	SAN FRANCISCO, CA	967	1821	219	UA	79.89	229	F9	13.16	177
MEMPHIS, TN	NEW YORK, NY	957	651	213	NW	69.42	213	DL	10.87	200
MINNEAPOLIS, MN	SALT LAKE CITY, UT	992	256	212	DL	43.28	206	DL	43.28	206
AUSTIN, TX	CHICAGO, IL	972	604	207	AA	58.88	224	WN	11.27	140

Table 1

City-Pair		Market Data			Largest Carrier			Lowest Fare Carrier		
		Nonstop Distance	Psgs Per Day	Average One Way Fare	Carrier	Percent Market Share	Average One Way Fare 2/	Carrier	Percent Market Share	Average One Way Fare 2/
ALBUQUERQUE, NM	MINNEAPOLIS, MN	982	182	202	NW	56.95	215	TW	10.32	146
KANSAS CITY, MO	WASHINGTON, DC	950	584	197	US	57.03	200	TW	10.23	173
DENVER, CO	PORTLAND, OR	992	671	197	UA	73.25	205	F9	17.75	171
DALLAS, TX	GREENSBORO, NC	999	275	192	AA	58.52	190	AA	58.52	190
HOUSTON, TX	MIAMI, FL	964	458	189	CO	58.29	197	AA	32.5	178
FT. MYERS, FL	ST. LOUIS, MO	980	179	188	TW	85.99	186	NW	1.33	179
COLUMBUS, OH	HOUSTON, TX	987	279	187	CO	65.02	198	WN	13.14	142
GREENSBORO, NC	HOUSTON, TX	988	139	186	CO	59.51	186	CO	59.51	186
CO SPRINGS, CO	INDIANAPOLIS, IN	991	63	184	UA	54.07	193	TW	16.81	164
PHILADELPHIA, PA	WEST PALM BEACH, FL	951	564	181	US	82.41	184	JI	5.82	124
DALLAS, TX	ORLANDO, FL	984	1095	181	AA	47.18	189	DL	40.25	173
PHILADELPHIA, PA	SARASOTA, FL	958	82	180	US	56.99	173	US	56.99	173
CO SPRINGS, CO	SAN FRANCISCO, CA	964	159	176	UA	67.05	184	DL	12.55	132
FT. MYERS, FL	PHILADELPHIA, PA	992	338	174	US	74.67	176	US	74.67	176
FT. LAUDERDALE, FL	PHILADELPHIA, PA	992	816	168	US	73.26	173	JI	8.22	133
FT. LAUDERDALE, FL	PITTSBURGH, PA	995	289	168	US	74.12	172	DL	13.21	153
FT. LAUDERDALE, FL	HOUSTON, TX	965	430	168	CO	63.27	167	WN	18.42	165
PITTSBURGH, PA	WEST PALM BEACH, FL	953	241	165	US	80.43	166	DL	13.78	161
AUSTIN, TX	ORLANDO, FL	996	270	159	WN	35.1	146	WN	35.1	146
FT. MYERS, FL	PITTSBURGH, PA	967	205	158	US	78.78	157	US	78.78	157
NEW ORLEANS, LA	WASHINGTON, DC	968	711	157	US	46.4	164	UA	28.07	145
LAS VEGAS, NV	OKLAHOMA CITY, OK	987	283	152	AA	63.58	149	AA	63.58	149
COLUMBUS, OH	MIAMI, FL	991	191	152	DL	44.04	155	US	23.22	151
SANTA ANA, CA	SEATTLE, WA	978	1112	149	AS	69.26	152	AA	19.57	133
NEW YORK, NY	TAMPA, FL	998	3232	143	CO	33.36	155	US	26.02	135
BALTIMORE, MD	KANSAS CITY, MO	966	499	140	WN	68.15	137	WN	68.15	137
LAS VEGAS, NV	WICHITA, KS	988	145	138	HP	53.27	118	HP	53.27	118
LOS ANGELES, CA	SEATTLE, WA	954	2690	135	AS	55.24	132	AS	55.24	132
NEWBURGH, NY	ORLANDO, FL	991	105	134	JI	50.21	128	JI	50.21	128
PALM SPRINGS, CA	SEATTLE, WA	987	365	131	AS	90.44	130	AS	90.44	130
DETROIT, MI	TAMPA, FL	983	1139	129	NW	58.06	134	NK	28.79	112
ONTARIO, CA	SEATTLE, WA	956	735	128	AS	74.16	126	AS	74.16	126
COLUMBUS, OH	FT. LAUDERDALE, FL	973	306	127	DL	45.42	125	DL	45.42	125
DETROIT, MI	ORLANDO, FL	957	1794	123	NW	62.35	127	NK	19.69	110
ATLANTIC CITY, NJ	FT. LAUDERDALE, FL	977	394	121	NK	99.48	120	NK	99.48	120
BALTIMORE, MD	NEW ORLEANS, LA	998	577	120	US	53.27	116	US	53.27	116
ISLIP/LONG ISLAND, NY	ORLANDO, FL	972	695	111	DL	77.81	113	NK	13.69	97
ATLANTIC CITY, NJ	FT. MYERS, FL	982	252	110	NK	99.78	110	NK	99.78	110
MELBOURNE, FL	NEW YORK, NY	955	381	109	NK	84.52	96	NK	84.52	96
Mileage Block : 1001 to 1050 miles										
BOSTON, MA	ST. LOUIS, MO	1046	322	336	TW	72.54	378	DL	4.12	162
MINNEAPOLIS, MN	NEW YORK, NY	1016	1810	296	NW	64.62	325	SY	12.44	149
CLEVELAND, OH	DALLAS, TX	1021	385	291	AA	47.16	310	CO	33.94	297
HOUSTON, TX	MINNEAPOLIS, MN	1043	408	285	NW	30.27	379	SY	19.33	137
DENVER, CO	NASHVILLE, TN	1014	184	273	UA	64.01	293	AA	13.65	258
KANSAS CITY, MO	PHILADELPHIA, PA	1038	318	262	US	73.82	270	TW	3.97	191
MINNEAPOLIS, MN	NEW ORLEANS, LA	1041	191	254	NW	62.86	284	TW	9.54	149
DES MOINES, IA	NEW YORK, NY	1028	184	222	UA	37.68	218	TW	27.94	198
CO SPRINGS, CO	PORTLAND, OR	1031	54	217	UA	52.6	230	HP	13	164
DENVER, CO	SEATTLE, WA	1024	1171	204	UA	76.21	212	F9	14.83	188
CHICAGO, IL	SAN ANTONIO, TX	1041	575	195	AA	49.74	204	WN	13.04	159
OMAHA, NE	WASHINGTON, DC	1012	253	189	YX	63.58	192	UA	12.57	188

Table 1

		Market Data			Largest Carrier			Lowest Fare Carrier		
City-Pair		Nonstop Distance	Psgs Per Day	Average One Way Fare	Carrier	Percent Market Share	Average One Way Fare 2/	Carrier	Percent Market Share	Average One Way Fare 2/
DENVER, CO	GRAND RAPIDS, MI	1016	115	187	UA	42.53	188	NW	28.36	179
CLEVELAND, OH	WEST PALM BEACH, FL	1022	133	184	CO	36.96	184	US	25.92	166
ST. LOUIS, MO	WEST PALM BEACH, FL	1025	87	182	TW	63.59	163	TW	63.59	163
MIAMI, FL	PHILADELPHIA, PA	1013	686	180	US	45.74	183	AA	39.74	178
CO SPRINGS, CO	NASHVILLE, TN	1012	77	179	TW	23.84	153	TW	23.84	153
MIAMI, FL	PITTSBURGH, PA	1014	223	179	US	74.91	179	US	74.91	179
HOUSTON, TX	RALEIGH/DURHAM, NC	1044	319	178	CO	47.15	195	WN	15.66	151
HOUSTON, TX	PHOENIX, AZ	1020	776	173	WN	40.27	157	WN	40.27	157
NEW YORK, NY	SARASOTA, FL	1034	389	173	CO	60.83	168	CO	60.83	168
CLEVELAND, OH	FT. MYERS, FL	1025	325	171	CO	73.28	169	CO	73.28	169
DETROIT, MI	SARASOTA, FL	1024	145	170	NW	76.99	167	NW	76.99	167
NEW YORK, NY	WEST PALM BEACH, FL	1024	3768	160	CO	31.8	153	CO	31.8	153
GRAND RAPIDS, MI	ORLANDO, FL	1024	198	154	NW	51.97	160	DL	28.42	140
ORLANDO, FL	SAN ANTONIO, TX	1041	264	154	WN	37.2	144	WN	37.2	144
INDIANAPOLIS, IN	MIAMI, FL	1024	164	154	DL	22.91	167	US	21.79	142
CHICAGO, IL	TAMPA, FL	1012	2083	153	UA	33.45	172	TZ	24.97	112
CHICAGO, IL	SARASOTA, FL	1036	255	151	TZ	60.97	132	TZ	60.97	132
PROVIDENCE, RI	ST. LOUIS, MO	1021	207	151	WN	42.02	143	WN	42.02	143
CHICAGO, IL	ORLANDO, FL	1005	2843	148	UA	31.37	171	TZ	26.96	118
BALTIMORE, MD	OMAHA, NE	1028	138	142	WN	26.79	134	NW	17.12	128
KANSAS CITY, MO	PHOENIX, AZ	1044	795	137	WN	52.62	140	HP	33.41	133
KANSAS CITY, MO	TAMPA, FL	1049	317	136	WN	35.77	120	WN	35.77	120
PHOENIX, AZ	SPOKANE, WA	1021	235	135	WN	42.27	136	DL	14.49	128
SAN DIEGO, CA	SPOKANE, WA	1027	137	133	AS	47.46	136	UA	23.29	124
OMAHA, NE	PHOENIX, AZ	1037	581	133	HP	56.13	127	HP	56.13	127
FT. LAUDERDALE, FL	INDIANAPOLIS, IN	1006	377	130	TZ	48.9	118	TZ	48.9	118
BOSTON, MA	JACKSONVILLE, FL	1012	277	128	US	40.17	129	JI	10.22	104
ORLANDO, FL	ROCHESTER, NY	1033	345	121	US	73.57	116	US	73.57	116
PHOENIX, AZ	PORTLAND, OR	1009	1197	118	AS	43.26	118	HP	34.14	117
BUFFALO, NY	ORLANDO, FL	1011	519	111	US	63.85	105	US	63.85	105
ISLIP/LONG ISLAND, NY	TAMPA, FL	1034	509	107	NK	46.59	97	NK	46.59	97
Mileage Block : 1051 to 1100 miles										
HARTFORD, CT	MINNEAPOLIS, MN	1051	214	335	NW	71.13	361	TW	5.89	168
DALLAS, TX	PITTSBURGH, PA	1068	350	314	AA	39.95	343	US	39.05	334
DALLAS, TX	RALEIGH/DURHAM, NC	1062	558	253	AA	76.55	271	FL	6.56	148
DENVER, CO	NEW ORLEANS, LA	1063	293	237	UA	57.41	258	CO	19.09	173
KANSAS CITY, MO	NEW YORK, NY	1093	1007	234	CO	40.8	246	YX	27.8	234
MIAMI, FL	ST. LOUIS, MO	1069	188	228	TW	74.87	238	NW	2.72	146
CINCINNATI, OH	DENVER, CO	1069	335	227	DL	71.2	238	UA	11.79	219
CLEVELAND, OH	HOUSTON, TX	1091	550	212	CO	77.39	221	WN	13.31	163
CO SPRINGS, CO	SEATTLE, WA	1069	108	200	UA	55.3	224	DL	34.71	155
FT. LAUDERDALE, FL	ST. LOUIS, MO	1057	348	176	TW	60.42	183	WN	24.92	159
MINNEAPOLIS, MN	SAN ANTONIO, TX	1098	256	173	SY	37.91	134	SY	37.91	134
DALLAS, TX	LAS VEGAS, NV	1055	1265	171	AA	30.86	243	SY	24.94	69
SALT LAKE CITY, UT	SAN ANTONIO, TX	1087	141	171	DL	67.93	175	WN	11.44	158
NEW ORLEANS, LA	PHILADELPHIA, PA	1088	482	170	US	70.98	173	DL	11.52	168
MIAMI, FL	NEW YORK, NY	1093	4785	169	AA	45.63	188	FF	13.81	105
CLEVELAND, OH	MIAMI, FL	1081	296	168	CO	47.34	161	CO	47.34	161
FT. MYERS, FL	NEW YORK, NY	1068	1051	166	CO	50.8	162	CO	50.8	162
OKLAHOMA CITY, OK	ORLANDO, FL	1070	169	164	DL	27.99	175	WN	15.96	146
DETROIT, MI	HOUSTON, TX	1077	683	163	CO	42.83	170	NW	41.17	154
CLEVELAND, OH	FT. LAUDERDALE, FL	1062	447	158	CO	68.97	154	CO	68.97	154

Table 1

City-Pair		Market Data			Largest Carrier			Lowest Fare Carrier		
		Nonstop Distance	Psgs Per Day	Average One Way Fare	Carrier	Percent Market Share	Average One Way Fare 2/	Carrier	Percent Market Share	Average One Way Fare 2/
LAS VEGAS, NV	TULSA, OK	1077	164	155	WN	48.21	145	DL	17.79	143
ROCHESTER, NY	TAMPA, FL	1080	168	141	US	61.1	138	DL	18.51	137
DETROIT, MI	FT. MYERS, FL	1085	793	141	NK	48.01	122	NK	48.01	122
SAN DIEGO, CA	SEATTLE, WA	1050	1384	138	AS	73.35	139	AA	3.92	115
AUSTIN, TX	LAS VEGAS, NV	1085	498	136	WN	72.68	130	HP	15.48	126
LAS VEGAS, NV	SAN ANTONIO, TX	1069	547	135	WN	84.47	131	HP	5.4	117
FT. LAUDERDALE, FL	NEW YORK, NY	1072	6561	133	DL	31.91	137	NK	12.93	110
MILWAUKEE, WI	TAMPA, FL	1076	380	133	NW	50.64	121	NW	50.64	121
DETROIT, MI	WEST PALM BEACH, FL	1087	645	127	NW	59.2	132	NK	29.89	106
MILWAUKEE, WI	ORLANDO, FL	1066	847	125	SY	28.11	91	SY	28.11	91
BUFFALO, NY	TAMPA, FL	1055	273	124	US	55.39	122	US	55.39	122
LAS VEGAS, NV	OMAHA, NE	1099	446	124	WN	56.64	124	HP	26.69	111
ALBANY, NY	ORLANDO, FL	1073	494	121	US	50.08	117	US	50.08	117
KANSAS CITY, MO	ORLANDO, FL	1072	737	120	DL	60.38	116	DL	60.38	116
ORLANDO, FL	SYRACUSE, NY	1053	460	120	DL	63.9	118	DL	63.9	118
ISLIP/LONG ISLAND, NY	WEST PALM BEACH, FL	1052	350	117	NK	93.45	114	NK	93.45	114
FT. LAUDERDALE, FL	ISLIP/LONG ISLAND, NY	1093	707	117	DL	58.75	121	NK	29.61	103
ORLANDO, FL	PROVIDENCE, RI	1073	970	114	WN	45.86	108	WN	45.86	108
HARTFORD, CT	ORLANDO, FL	1050	1441	107	DL	60.47	106	US	28.59	104
Mileage Block : 1101 to 1200 miles										
HOUSTON, TX	PITTSBURGH, PA	1118	276	339	US	45.1	350	US	45.1	350
COLUMBUS, OH	DENVER, CO	1156	218	302	UA	66.87	323	CO	2.84	169
DALLAS, TX	SAN DIEGO, CA	1171	595	284	AA	58.22	316	DL	14.1	270
DENVER, CO	DETROIT, MI	1124	498	265	UA	44.13	285	NW	37.37	269
DALLAS, TX	WASHINGTON, DC	1183	1801	252	AA	70.75	274	DL	14.26	187
NEW YORK, NY	OMAHA, NE	1137	263	246	YX	33.02	245	TW	15.37	227
DALLAS, TX	MIAMI, FL	1121	503	234	AA	78.87	244	NW	1.27	113
DALLAS, TX	ONTARIO, CA	1189	334	229	AA	49.46	272	HP	13.59	152
CHICAGO, IL	WEST PALM BEACH, FL	1145	420	228	UA	40.4	222	UA	40.4	222
DALLAS, TX	WEST PALM BEACH, FL	1104	210	228	DL	58.2	236	AA	35.63	221
DALLAS, TX	RICHMOND, VA	1158	264	227	AA	70.28	215	AA	70.28	215
BOSTON, MA	MINNEAPOLIS, MN	1124	1007	220	NW	77.11	233	SY	11.63	131
ATLANTA, GA	DENVER, CO	1199	1158	215	DL	40.33	250	NJ	13.87	127
ATLANTA, GA	CO SPRINGS, CO	1186	151	210	DL	61.44	235	UA	23.03	151
CHICAGO, IL	MIAMI, FL	1197	1263	206	AA	46.3	221	UA	33.49	204
NEW ORLEANS, LA	NEW YORK, NY	1168	1400	200	CO	39.01	234	TW	10.48	162
OKLAHOMA CITY, OK	WASHINGTON, DC	1151	188	199	TW	44.55	174	TW	44.55	174
DALLAS, TX	FT. LAUDERDALE, FL	1119	611	195	AA	48.08	211	DL	39.59	176
BOSTON, MA	MEMPHIS, TN	1140	249	191	NW	67.93	181	NW	67.93	181
DES MOINES, IA	ORLANDO, FL	1143	102	191	TW	43.47	191	NW	12.96	147
AUSTIN, TX	RALEIGH/DURHAM, NC	1161	191	190	AA	44.39	208	WN	12.31	173
ALBUQUERQUE, NM	CHICAGO, IL	1118	368	183	AA	41.13	209	WN	21.84	149
DES MOINES, IA	PHOENIX, AZ	1153	77	181	UA	43.16	185	AA	12.41	165
HOUSTON, TX	SALT LAKE CITY, UT	1197	345	172	DL	41.17	173	WN	10.7	156
DETROIT, MI	MIAMI, FL	1145	588	168	NW	74.65	169	CO	1.9	140
AUSTIN, TX	SAN DIEGO, CA	1163	240	166	WN	33.21	154	HP	16.2	136
CHICAGO, IL	FT. LAUDERDALE, FL	1166	1683	161	TZ	28.54	128	TZ	28.54	128
LOS ANGELES, CA	OKLAHOMA CITY, OK	1189	225	161	UA	28.55	144	UA	28.55	144
CHICAGO, IL	FT. MYERS, FL	1120	956	160	UA	43.83	158	TZ	30.64	153
SAN ANTONIO, TX	SAN DIEGO, CA	1131	213	158	WN	34.75	158	CO	15.23	155
HARTFORD, CT	MIAMI, FL	1194	206	155	AA	41.61	155	DL	15.61	152
FT. MYERS, FL	KANSAS CITY, MO	1157	112	155	TW	48.6	144	TW	48.6	144

Table 1		Market Data			Largest Carrier			Lowest Fare Carrier		
		Nonstop Distance	Psgs Per Day	Average One Way Fare	Carrier	Percent Market Share	Average One Way Fare 2/	Carrier	Percent Market Share	Average One Way Fare 2/
BALTIMORE, MD	OKLAHOMA CITY, OK	1182	213	154	TW	31.36	152	TW	31.36	152
ALBUQUERQUE, NM	PORTLAND, OR	1113	187	153	HP	30.57	136	HP	30.57	136
ALBUQUERQUE, NM	SEATTLE, WA	1181	284	150	WN	48.39	146	HP	15.17	140
PROVIDENCE, RI	WEST PALM BEACH, FL	1150	146	149	US	49.52	139	US	49.52	139
BOSTON, MA	WEST PALM BEACH, FL	1197	1028	145	DL	51.75	158	US	42.15	126
FT. MYERS, FL	MILWAUKEE, WI	1185	253	144	NW	31.52	125	NW	31.52	125
DETROIT, MI	FT. LAUDERDALE, FL	1127	692	144	NW	43.94	159	NK	40.52	118
FT. LAUDERDALE, FL	NEWBURGH, NY	1122	64	143	JI	72.11	137	JI	72.11	137
ST. LOUIS, MO	SALT LAKE CITY, UT	1157	267	143	TW	52.58	140	WN	24.91	132
KANSAS CITY, MO	LAS VEGAS, NV	1140	655	140	WN	68.69	140	HP	16.62	114
SYRACUSE, NY	TAMPA, FL	1105	152	136	US	56.72	133	US	56.72	133
ALBANY, NY	TAMPA, FL	1131	170	136	US	55.14	131	US	55.14	131
PHOENIX, AZ	SEATTLE, WA	1107	1678	135	AS	51.64	135	HP	21.76	132
BUFFALO, NY	FT. LAUDERDALE, FL	1167	182	130	US	47.1	126	US	47.1	126
FT. LAUDERDALE, FL	PROVIDENCE, RI	1189	346	130	WN	45.58	130	US	30.9	123
BOSTON, MA	TAMPA, FL	1185	1226	125	DL	45.27	126	US	42.97	118
FT. MYERS, FL	HARTFORD, CT	1181	232	124	DL	52.1	124	DL	52.1	124
PROVIDENCE, RI	TAMPA, FL	1137	476	119	WN	65.97	113	WN	65.97	113
BOSTON, MA	ORLANDO, FL	1121	2260	118	DL	65.1	118	US	21.92	113
HARTFORD, CT	WEST PALM BEACH, FL	1133	732	118	DL	57.41	120	US	36.29	113
MANCHESTER, NH	ORLANDO, FL	1142	448	118	WN	58.56	112	WN	58.56	112
FT. LAUDERDALE, FL	HARTFORD, CT	1173	745	117	DL	47.93	116	US	38.84	112
HARTFORD, CT	TAMPA, FL	1111	661	111	US	65.14	106	US	65.14	106
FT. MYERS, FL	ISLIP/LONG ISLAND, NY	1102	229	101	NK	97.01	99	NK	97.01	99
Mileage Block : 1201 to 1300 miles										
NEW YORK, NY	TULSA, OK	1225	159	323	AA	42.07	325	DL	14.98	278
DALLAS, TX	SANTA ANA, CA	1205	455	316	AA	70.45	346	DL	12.64	237
DALLAS, TX	LOS ANGELES, CA	1235	1274	290	AA	51.65	356	DL	11.24	217
HOUSTON, TX	WASHINGTON, DC	1205	834	273	CO	72.05	295	FL	4.17	151
BALTIMORE, MD	DALLAS, TX	1217	504	267	AA	65.57	286	TW	4.21	180
CLEVELAND, OH	DENVER, CO	1202	290	262	UA	44.83	274	UA	44.83	274
DENVER, CO	PITTSBURGH, PA	1291	308	246	US	63.35	254	US	63.35	254
BOSTON, MA	KANSAS CITY, MO	1257	338	229	YX	48.01	235	US	11.77	209
ALBUQUERQUE, NM	ATLANTA, GA	1270	178	229	DL	67.14	237	AA	11.87	225
DALLAS, TX	NORFOLK, VA	1213	193	211	AA	63.35	214	AA	63.35	214
CHICAGO, IL	EL PASO, TX	1236	263	201	AA	68.21	215	WN	15.25	175
CHICAGO, IL	SALT LAKE CITY, UT	1250	546	200	DL	34.47	214	AA	14.98	191
DALLAS, TX	LONG BEACH, CA	1220	588	200	AA	92.93	200	HP	5.8	176
KEY WEST, FL	NEW YORK, NY	1203	121	198	AA	50.22	175	AA	50.22	175
BOSTON, MA	MIAMI, FL	1258	807	190	AA	72.04	198	CO	2.05	144
BALTIMORE, MD	HOUSTON, TX	1235	873	182	CO	55.32	193	WN	32.76	162
DETROIT, MI	SAN ANTONIO, TX	1218	190	180	CO	24.17	169	TW	10.11	161
BUFFALO, NY	DALLAS, TX	1212	220	174	AA	47.36	187	US	14.14	167
MINNEAPOLIS, MN	PHOENIX, AZ	1276	1486	170	NW	59.04	172	SY	15.35	137
AUSTIN, TX	LOS ANGELES, CA	1238	520	169	AA	48.9	182	WN	34.82	146
LOS ANGELES, CA	TULSA, OK	1283	208	166	AA	27.16	184	WN	19.2	154
DES MOINES, IA	LAS VEGAS, NV	1218	122	165	UA	43.44	165	HP	34.7	153
KANSAS CITY, MO	MIAMI, FL	1254	219	160	TW	31.81	145	TW	31.81	145
LOS ANGELES, CA	SAN ANTONIO, TX	1211	418	159	WN	43.7	154	CO	31.08	153
FT. LAUDERDALE, FL	KANSAS CITY, MO	1244	184	159	DL	32.8	166	TW	20.98	150
PHOENIX, AZ	ST. LOUIS, MO	1262	734	153	TW	43.47	162	WN	38.22	141
HOUSTON, TX	LAS VEGAS, NV	1223	1087	151	CO	42.06	171	WN	40.87	132

Table 1

City-Pair		Market Data			Largest Carrier			Lowest Fare Carrier		
		Nonstop Distance	Psgs Per Day	Average One Way Fare	Carrier	Percent Market Share	Average One Way Fare 2/	Carrier	Percent Market Share	Average One Way Fare 2/
MIAMI, FL	PROVIDENCE, RI	1211	142	150	US	43.51	136	CO	10.23	135
ALBANY, NY	FT. LAUDERDALE, FL	1206	126	149	US	46.95	142	US	46.95	142
FT. MYERS, FL	PROVIDENCE, RI	1203	124	148	US	43.67	145	US	43.67	145
FT. LAUDERDALE, FL	MILWAUKEE, WI	1245	159	148	NW	36.5	128	NW	36.5	128
MIAMI, FL	MILWAUKEE, WI	1260	189	147	NW	48.33	134	US	11.33	124
BOSTON, MA	SARASOTA, FL	1222	147	143	DL	48.41	154	US	31.56	130
OMAHA, NE	ORLANDO, FL	1212	257	142	TW	30.99	144	DL	19.64	125
SEATTLE, WA	TUCSON, AZ	1217	287	140	HP	51.02	132	HP	51.02	132
ORLANDO, FL	PORTLAND, ME	1216	159	137	DL	53.32	138	US	32.17	132
BOSTON, MA	FT. MYERS, FL	1249	767	136	DL	79.07	133	FL	1.56	131
BOSTON, MA	FT. LAUDERDALE, FL	1237	1430	132	DL	57.01	132	US	25.8	125
FT. LAUDERDALE, FL	MANCHESTER, NH	1265	143	128	US	49.96	119	US	49.96	119
HARTFORD, CT	NEW ORLEANS, LA	1281	211	124	US	33.45	117	US	33.45	117
MANCHESTER, NH	TAMPA, FL	1205	204	123	US	55.89	120	US	55.89	120
Mileage Block : 1301 to 1400 miles										
DALLAS, TX	NEW YORK, NY	1384	3397	309	AA	59.11	341	DL	12.92	220
DALLAS, TX	PHILADELPHIA, PA	1302	943	303	AA	53.41	341	US	26.33	291
AUSTIN, TX	WASHINGTON, DC	1308	336	291	AA	36.15	318	CO	14.39	268
NEW YORK, NY	OKLAHOMA CITY, OK	1339	189	279	TW	29.41	282	NW	10.28	172
HOUSTON, TX	SANTA ANA, CA	1348	277	276	CO	60.25	317	HP	25.33	164
CHARLOTTE, NC	DENVER, CO	1339	233	265	US	58.89	261	US	58.89	261
HOUSTON, TX	PHILADELPHIA, PA	1325	730	259	CO	47.87	281	US	30.97	248
MINNEAPOLIS, MN	TAMPA, FL	1308	370	239	NW	64.38	268	SY	12.93	138
MINNEAPOLIS, MN	TUCSON, AZ	1301	96	237	NW	56.22	210	NW	56.22	210
SAN ANTONIO, TX	WASHINGTON, DC	1376	379	204	AA	49.38	185	AA	49.38	185
HOUSTON, TX	LOS ANGELES, CA	1379	1420	201	CO	51.4	217	WN	20.12	170
DALLAS, TX	RENO, NV	1345	199	199	AA	57.39	197	DL	29.3	194
HOUSTON, TX	SAN DIEGO, CA	1304	497	186	CO	50.5	209	HP	14.91	129
NEW ORLEANS, LA	PHOENIX, AZ	1302	254	179	WN	59.85	163	WN	59.85	163
AUSTIN, TX	BALTIMORE, MD	1342	293	177	WN	31.78	164	DL	16.93	157
HOUSTON, TX	ONTARIO, CA	1335	292	177	CO	45.34	190	HP	18.38	144
MINNEAPOLIS, MN	SEATTLE, WA	1399	885	174	NW	72.43	178	SY	19.82	132
LAS VEGAS, NV	ST. LOUIS, MO	1373	473	173	TW	55.13	193	WN	31.99	147
OKLAHOMA CITY, OK	SAN FRANCISCO, CA	1387	114	168	UA	35.24	166	WN	12.1	142
LOS ANGELES, CA	OMAHA, NE	1331	290	168	YX	42.2	174	UA	20.28	168
KANSAS CITY, MO	LOS ANGELES, CA	1363	637	165	WN	59.92	158	WN	59.92	158
OMAHA, NE	SEATTLE, WA	1370	166	164	UA	48.53	167	NW	18.01	155
KANSAS CITY, MO	SANTA ANA, CA	1344	212	159	UA	30.51	164	HP	18.41	148
KANSAS CITY, MO	ONTARIO, CA	1320	165	157	WN	38.59	166	HP	14.58	136
KANSAS CITY, MO	SAN DIEGO, CA	1334	380	156	WN	40.39	155	UA	25.43	147
OMAHA, NE	SAN DIEGO, CA	1316	148	156	UA	36.38	159	HP	20.99	140
BOSTON, MA	NEW ORLEANS, LA	1368	398	156	DL	28.89	169	US	22.75	153
MINNEAPOLIS, MN	ORLANDO, FL	1310	1178	153	NW	68.16	160	SY	21.05	117
MADISON, WI	PHOENIX, AZ	1398	181	139	NW	41.52	135	NW	41.52	135
LAS VEGAS, NV	MINNEAPOLIS, MN	1300	1092	130	NW	55.72	142	SY	33.24	99
Mileage Block : 1401 to 1500 miles										
DALLAS, TX	SAN JOSE, CA	1438	652	374	AA	78.18	413	NW	4.02	110
DALLAS, TX	SAN FRANCISCO, CA	1464	894	363	AA	56.74	407	DL	12.97	313
DALLAS, TX	OAKLAND, CA	1456	325	343	AA	56.05	366	DL	21.27	305
DALLAS, TX	SACRAMENTO, CA	1431	226	318	AA	51.66	351	HP	10	349
HOUSTON, TX	NEW YORK, NY	1408	2389	316	CO	70.46	348	AA	10.68	249
DENVER, CO	WASHINGTON, DC	1454	1169	291	UA	72.8	332	AA	8.78	140

Table 1

City-Pair		Market Data			Largest Carrier			Lowest Fare Carrier		
		Nonstop Distance	Psgs Per Day	Average One Way Fare	Carrier	Percent Market Share	Average One Way Fare 2/	Carrier	Percent Market Share	Average One Way Fare 2/
MINNEAPOLIS, MN	PORTLAND, OR	1427	293	288	NW	65.81	315	UA	11.75	294
DALLAS, TX	HARTFORD, CT	1471	422	259	AA	71.94	271	DL	11.35	234
CO SPRINGS, CO	WASHINGTON, DC	1471	203	253	UA	41.58	307	AA	29.66	181
FT. LAUDERDALE, FL	MINNEAPOLIS, MN	1489	167	245	NW	39.37	248	TW	13.95	192
AUSTIN, TX	SAN JOSE, CA	1471	567	244	AA	79.42	259	HP	5.72	158
BALTIMORE, MD	DENVER, CO	1491	703	236	UA	64.65	250	F9	12.54	220
DENVER, CO	RALEIGH/DURHAM, NC	1436	259	217	AA	19.19	267	CO	14.41	99
DENVER, CO	JACKSONVILLE, FL	1449	192	199	DL	44.12	222	CO	29.27	147
CHICAGO, IL	TUCSON, AZ	1437	389	198	AA	73.23	195	NW	1.81	132
FT. MYERS, FL	MINNEAPOLIS, MN	1417	313	191	NW	54.95	212	SY	22.99	138
MILWAUKEE, WI	PHOENIX, AZ	1461	413	186	YX	44.02	204	NW	10.72	163
SAN ANTONIO, TX	SAN FRANCISCO, CA	1482	189	185	AA	26.96	213	WN	10.6	149
DETROIT, MI	SALT LAKE CITY, UT	1482	203	185	DL	62.9	184	NW	14.58	158
LITTLE ROCK, AR	LOS ANGELES, CA	1494	155	183	AA	26.75	199	NW	10.29	137
KANSAS CITY, MO	SEATTLE, WA	1491	323	182	WN	28.23	168	WN	28.23	168
OMAHA, NE	SAN FRANCISCO, CA	1435	148	175	UA	57.14	180	WN	2.21	141
SAN FRANCISCO, CA	TULSA, OK	1465	113	174	AA	29.33	175	CO	13.46	147
NASHVILLE, TN	PHOENIX, AZ	1449	342	173	WN	58.21	165	WN	58.21	165
KANSAS CITY, MO	OAKLAND, CA	1490	221	172	WN	69.64	170	WN	69.64	170
DES MOINES, IA	LOS ANGELES, CA	1449	145	170	UA	59.39	171	NW	13.24	145
NASHVILLE, TN	SALT LAKE CITY, UT	1405	132	170	DL	48.4	174	AA	15.53	166
KANSAS CITY, MO	SACRAMENTO, CA	1444	173	163	UA	37.58	169	WN	23.15	160
CHICAGO, IL	PHOENIX, AZ	1440	3068	162	UA	31.2	168	TZ	15.44	135
KANSAS CITY, MO	PORTLAND, OR	1484	206	159	WN	30.23	138	WN	30.23	138
BALTIMORE, MD	SAN ANTONIO, TX	1408	450	155	WN	48.04	145	WN	48.04	145
NEW ORLEANS, LA	SALT LAKE CITY, UT	1429	146	155	DL	82.11	154	UA	4.23	133
INDIANAPOLIS, IN	PHOENIX, AZ	1490	560	143	HP	55.65	133	HP	55.65	133
Mileage Block : 1501 to 1600 miles										
MINNEAPOLIS, MN	SAN JOSE, CA	1577	190	356	NW	65.7	373	NW	65.7	373
AUSTIN, TX	NEW YORK, NY	1505	619	346	CO	42.95	354	CO	42.95	354
MINNEAPOLIS, MN	SANTA ANA, CA	1523	187	334	NW	69.4	337	NW	69.4	337
BOSTON, MA	DALLAS, TX	1562	1135	319	AA	62.57	369	DL	25.82	225
BOSTON, MA	HOUSTON, TX	1597	646	317	CO	70.35	347	FL	3.42	156
DENVER, CO	PHILADELPHIA, PA	1558	528	310	UA	50.44	352	US	26.27	295
NEW YORK, NY	SAN ANTONIO, TX	1574	494	301	CO	44.55	328	DL	15.08	266
ATLANTA, GA	PHOENIX, AZ	1587	683	295	DL	58.1	323	HP	20.17	258
CINCINNATI, OH	PHOENIX, AZ	1570	148	285	DL	77.26	301	NW	4.27	163
ST. LOUIS, MO	SANTA ANA, CA	1571	189	270	TW	71.72	269	NW	3.57	185
MIAMI, FL	MINNEAPOLIS, MN	1502	341	263	NW	65.08	292	SY	6.13	119
ATLANTA, GA	SALT LAKE CITY, UT	1590	467	252	DL	65.47	297	CO	6.01	103
LOS ANGELES, CA	ST. LOUIS, MO	1593	667	252	TW	59.01	293	WN	21.06	163
MINNEAPOLIS, MN	SAN FRANCISCO, CA	1589	1152	242	NW	68.09	256	SY	15.96	144
AUSTIN, TX	SAN FRANCISCO, CA	1500	297	226	UA	37.19	226	HP	16.64	167
DENVER, CO	TAMPA, FL	1507	461	218	UA	46.58	245	CO	10.5	174
DALLAS, TX	PROVIDENCE, RI	1531	200	214	CO	32.39	116	CO	32.39	116
MINNEAPOLIS, MN	SAN DIEGO, CA	1533	508	211	NW	60.03	239	SY	15.36	136
ST. LOUIS, MO	SAN DIEGO, CA	1559	342	211	TW	56.76	231	WN	21.59	168
HARTFORD, CT	HOUSTON, TX	1508	258	209	CO	51.75	202	CO	51.75	202
LOS ANGELES, CA	MINNEAPOLIS, MN	1536	1189	207	NW	65.28	219	SY	15.65	150
CO SPRINGS, CO	ORLANDO, FL	1524	119	206	UA	32.21	217	CO	11.83	162
ONTARIO, CA	ST. LOUIS, MO	1549	184	195	TW	45.23	223	WN	32.5	172
DENVER, CO	ORLANDO, FL	1545	918	190	UA	40.7	224	DL	10.82	170

Table 1

		Market Data			Largest Carrier			Lowest Fare Carrier		
City-Pair		Nonstop Distance	Psgs Per Day	Average One Way Fare	Carrier	Percent Market Share	Average One Way Fare 2/	Carrier	Percent Market Share	Average One Way Fare 2/
CLEVELAND, OH	SALT LAKE CITY, UT	1569	118	186	DL	36.91	211	CO	11.2	164
KANSAS CITY, MO	SAN FRANCISCO, CA	1500	318	181	UA	35.95	197	HP	11.23	142
LAS VEGAS, NV	NASHVILLE, TN	1589	362	169	WN	69.1	161	NW	1.74	149
HOUSTON, TX	PROVIDENCE, RI	1572	269	168	WN	62.09	141	WN	62.09	141
OKLAHOMA CITY, OK	SEATTLE, WA	1521	148	166	UA	44.79	159	UA	44.79	159
COLUMBUS, OH	SALT LAKE CITY, UT	1532	127	166	DL	48.25	180	UA	11.38	178
ALBUQUERQUE, NM	ORLANDO, FL	1554	194	158	WN	47.23	144	WN	47.23	144
HOUSTON, TX	RENO, NV	1534	182	158	CO	32.92	162	HP	15.71	136
LAS VEGAS, NV	NEW ORLEANS, LA	1502	322	155	DL	47.1	147	DL	47.1	147
LOUISVILLE, KY	PHOENIX, AZ	1507	248	154	WN	61.11	144	WN	61.11	144
CHICAGO, IL	LAS VEGAS, NV	1515	2986	149	UA	33.13	167	HP	13.27	124
INDIANAPOLIS, IN	LAS VEGAS, NV	1591	793	127	TZ	52.71	125	HP	25.66	111
LAS VEGAS, NV	MILWAUKEE, WI	1524	857	119	SY	57.09	98	SY	57.09	98
Mileage Block : 1601 to 1700 miles										
AUSTIN, TX	BOSTON, MA	1695	238	350	AA	48.72	402	CO	14.9	293
DALLAS, TX	SEATTLE, WA	1660	724	324	AA	49.25	371	DL	22.25	281
DENVER, CO	HARTFORD, CT	1673	180	301	UA	51.72	347	AA	12.66	285
DALLAS, TX	PORTLAND, OR	1616	366	297	AA	37.79	338	UA	18.26	261
MILWAUKEE, WI	SEATTLE, WA	1697	121	277	NW	48.29	312	AA	11.08	120
DENVER, CO	NEW YORK, NY	1614	2206	265	UA	59.15	289	CO	15.89	255
HOUSTON, TX	SAN FRANCISCO, CA	1636	926	256	CO	64.65	273	UA	13.3	234
LOS ANGELES, CA	MEMPHIS, TN	1620	251	251	NW	73.98	253	AA	10.71	206
CO SPRINGS, CO	NEW YORK, NY	1634	170	245	UA	34.57	272	NW	11.72	180
CHICAGO, IL	PALM SPRINGS, CA	1652	184	239	AA	73.23	233	AA	73.23	233
CINCINNATI, OH	LAS VEGAS, NV	1679	173	236	DL	74.23	258	NW	8.4	120
HOUSTON, TX	SAN JOSE, CA	1609	356	233	CO	50.06	263	WN	13.43	173
DENVER, CO	WEST PALM BEACH, FL	1681	155	223	DL	59.42	222	AA	14.06	216
CO SPRINGS, CO	MIAMI, FL	1695	45	208	TW	24.82	176	TW	24.82	176
HOUSTON, TX	OAKLAND, CA	1644	178	206	WN	41.17	169	WN	41.17	169
ALBUQUERQUE, NM	WASHINGTON, DC	1649	390	196	TW	29.32	175	TW	29.32	175
CHICAGO, IL	RENO, NV	1671	304	180	AA	62.66	188	AA	62.66	188
NEW ORLEANS, LA	SAN DIEGO, CA	1602	224	180	DL	24.65	177	AA	16.43	171
GRAND RAPIDS, MI	LAS VEGAS, NV	1645	154	175	NW	60.66	171	NW	60.66	171
LOS ANGELES, CA	NEW ORLEANS, LA	1672	719	175	UA	33.4	190	DL	17.95	159
LAS VEGAS, NV	LOUISVILLE, KY	1627	193	165	DL	33.09	181	WN	32.64	147
DETROIT, MI	PHOENIX, AZ	1671	1052	165	NW	55.38	172	WN	12.24	146
ALBUQUERQUE, NM	BALTIMORE, MD	1674	214	162	WN	21.97	150	CO	10.05	150
COLUMBUS, OH	PHOENIX, AZ	1672	595	138	HP	59.88	141	DL	10.23	115
Mileage Block : 1701 to 1800 miles										
ASPEN, CO	NEW YORK, NY	1742	69	365	UA	87.17	367	HP	2.03	311
EAGLE, CO	NEW YORK, NY	1729	72	319	AA	57.29	354	UA	24.21	278
BOSTON, MA	CO SPRINGS, CO	1783	85	311	UA	50.25	359	AA	16.28	229
CHICAGO, IL	SANTA ANA, CA	1727	636	311	UA	50.74	321	AA	36.87	311
ST. LOUIS, MO	SAN FRANCISCO, CA	1737	440	287	TW	68.4	308	WN	7.83	145
CHICAGO, IL	SEATTLE, WA	1721	1113	284	UA	53.53	321	AA	19.6	292
CHICAGO, IL	PORTLAND, OR	1740	653	265	UA	54.85	296	AA	18.67	250
CHARLOTTE, NC	PHOENIX, AZ	1776	207	264	US	49.58	277	DL	21.43	228
BOSTON, MA	DENVER, CO	1754	970	258	UA	69.75	281	US	4.02	152
CHICAGO, IL	SACRAMENTO, CA	1782	357	257	UA	61.2	297	HP	10.91	160
DENVER, CO	MIAMI, FL	1710	415	256	UA	59.11	274	AA	15.38	272
ST. LOUIS, MO	SAN JOSE, CA	1718	167	256	TW	64.49	253	WN	12.73	190
ST. LOUIS, MO	SEATTLE, WA	1711	373	255	TW	68.69	273	NW	5.95	167

Table 1

City-Pair		Market Data			Largest Carrier			Lowest Fare Carrier		
		Nonstop Distance	Psgs Per Day	Average One Way Fare	Carrier	Percent Market Share	Average One Way Fare 2/	Carrier	Percent Market Share	Average One Way Fare 2/
ATLANTA, GA	LAS VEGAS, NV	1747	715	237	DL	59.85	276	HP	24.1	151
CHICAGO, IL	LOS ANGELES, CA	1745	3766	230	UA	38.79	271	TZ	20.89	155
CHICAGO, IL	SAN DIEGO, CA	1723	1154	221	UA	39.29	246	WN	11.03	159
PORTLAND, OR	ST. LOUIS, MO	1710	183	220	TW	51.99	235	WN	12.76	171
DENVER, CO	FT. LAUDERDALE, FL	1705	247	217	DL	32.75	238	TW	21.85	159
CHICAGO, IL	ONTARIO, CA	1701	325	216	UA	45.02	259	HP	19.28	153
LOS ANGELES, CA	MILWAUKEE, WI	1757	428	211	YX	47.86	215	NW	14.46	196
MILWAUKEE, WI	SAN DIEGO, CA	1742	176	201	NW	27.59	199	TW	14.57	172
AUSTIN, TX	SEATTLE, WA	1764	212	199	AA	25.73	243	DL	20.18	161
CLEVELAND, OH	PHOENIX, AZ	1738	486	180	CO	48.57	199	WN	12.36	141
PHOENIX, AZ	TAMPA, FL	1790	352	176	HP	25.88	161	WN	17.18	149
INDIANAPOLIS, IN	SAN DIEGO, CA	1787	230	176	UA	23.94	171	HP	13.34	144
LOS ANGELES, CA	NASHVILLE, TN	1797	587	172	AA	52.21	181	WN	28.65	152
SAN ANTONIO, TX	SEATTLE, WA	1774	226	168	AA	24.46	184	UA	13.14	156
NASHVILLE, TN	SAN DIEGO, CA	1754	188	166	WN	36	159	DL	14.61	158
DETROIT, MI	LAS VEGAS, NV	1750	1747	136	NW	46.64	166	SY	38.48	89
COLUMBUS, OH	LAS VEGAS, NV	1772	740	121	HP	68.45	119	DL	10.12	115
Mileage Block : 1801 to 1900 miles										
CHICAGO, IL	SAN JOSE, CA	1830	625	331	UA	41.13	365	AA	40.86	341
CHICAGO, IL	OAKLAND, CA	1836	364	321	UA	66.54	380	WN	20.71	163
CHICAGO, IL	SAN FRANCISCO, CA	1846	2601	302	UA	53.45	355	TZ	17.03	153
ATLANTA, GA	SAN DIEGO, CA	1892	485	296	DL	57.06	360	HP	17.06	169
SALT LAKE CITY, UT	WASHINGTON, DC	1835	312	276	DL	60.86	303	AA	12.34	165
ALBUQUERQUE, NM	NEW YORK, NY	1819	317	265	TW	23.45	226	TW	23.45	226
PHOENIX, AZ	PITTSBURGH, PA	1814	261	239	US	72.92	235	DL	5.62	213
HOUSTON, TX	PORTLAND, OR	1827	267	223	CO	48.63	231	HP	10.76	198
HOUSTON, TX	SEATTLE, WA	1876	499	221	CO	53.47	245	WN	14.1	155
SALT LAKE CITY, UT	TAMPA, FL	1891	117	214	DL	40.45	257	AA	12.3	240
MILWAUKEE, WI	SAN FRANCISCO, CA	1847	356	203	YX	31.19	197	NW	22.49	190
PHOENIX, AZ	RALEIGH/DURHAM, NC	1891	265	192	AA	25.67	199	DL	17.91	191
LOS ANGELES, CA	LOUISVILLE, KY	1845	192	190	DL	32.48	186	WN	16.02	168
INDIANAPOLIS, IN	SEATTLE, WA	1869	203	189	UA	30.4	212	NW	24.95	174
BIRMINGHAM, AL	LOS ANGELES, CA	1818	198	184	DL	38.8	184	NW	11.64	146
INDIANAPOLIS, IN	LOS ANGELES, CA	1815	565	171	TZ	31.07	138	TZ	31.07	138
ORLANDO, FL	PHOENIX, AZ	1849	617	166	HP	26.39	165	WN	25.78	145
CLEVELAND, OH	LAS VEGAS, NV	1825	686	165	CO	63.41	170	WN	13.31	150
BALTIMORE, MD	SALT LAKE CITY, UT	1866	342	161	DL	30.28	178	AA	13.31	136
Mileage Block : 1901 to 2000 miles										
DETROIT, MI	SANTA ANA, CA	1962	198	369	NW	63.81	395	TW	4.72	188
ATLANTA, GA	SANTA ANA, CA	1920	284	358	DL	58.81	381	HP	12.69	245
CINCINNATI, OH	SEATTLE, WA	1966	138	341	DL	70.5	368	TW	6.31	216
CINCINNATI, OH	LOS ANGELES, CA	1901	310	325	DL	74.78	351	US	2.17	147
PHILADELPHIA, PA	SALT LAKE CITY, UT	1928	143	315	DL	71.84	317	HP	2.82	177
PHOENIX, AZ	WASHINGTON, DC	1959	368	303	UA	31.82	403	HP	11.28	223
NEW YORK, NY	SALT LAKE CITY, UT	1982	562	301	DL	55.68	328	CO	12.5	305
DAYTON, OH	LOS ANGELES, CA	1925	105	297	AA	24.59	253	AA	24.59	253
TUCSON, AZ	WASHINGTON, DC	1948	213	296	AA	56.17	279	AA	56.17	279
ATLANTA, GA	LOS ANGELES, CA	1946	1440	293	DL	55.79	348	HP	13.71	155
DETROIT, MI	SEATTLE, WA	1928	348	289	NW	57.37	343	HP	12.27	145
DETROIT, MI	PORTLAND, OR	1956	187	260	NW	40.8	334	HP	20.43	130
ATLANTA, GA	RENO, NV	1997	101	251	DL	51.29	291	HP	13.41	195
MIAMI, FL	PHOENIX, AZ	1976	204	249	HP	25.25	283	CO	23.18	184

Table 1

City-Pair		Market Data			Largest Carrier			Lowest Fare Carrier		
		Nonstop Distance	Psgs Per Day	Average One Way Fare	Carrier	Percent Market Share	Average One Way Fare 2/	Carrier	Percent Market Share	Average One Way Fare 2/
DETROIT, MI	SAN DIEGO, CA	1958	378	240	NW	39.4	311	HP	24.99	141
CHARLOTTE, NC	LAS VEGAS, NV	1919	208	240	US	43.26	229	TW	11.44	201
ATLANTA, GA	ONTARIO, CA	1902	267	236	DL	39.35	300	UA	20.41	129
ALBUQUERQUE, NM	BOSTON, MA	1978	173	221	DL	28.45	209	TW	18.19	199
LAS VEGAS, NV	PITTSBURGH, PA	1912	265	218	US	37.76	214	TW	23.04	198
DETROIT, MI	LOS ANGELES, CA	1979	1387	217	NW	50.91	258	NK	16.49	124
NASHVILLE, TN	SAN FRANCISCO, CA	1968	168	204	AA	34	202	AA	34	202
NEW ORLEANS, LA	SAN FRANCISCO, CA	1912	413	202	UA	45.81	222	CO	22.29	169
BUFFALO, NY	LAS VEGAS, NV	1990	227	195	UA	31.12	183	CO	24.28	179
DETROIT, MI	RENO, NV	1907	97	195	NW	51.52	218	HP	16.65	133
FT. LAUDERDALE, FL	PHOENIX, AZ	1974	315	188	HP	29.75	162	WN	12.82	145
INDIANAPOLIS, IN	SAN FRANCISCO, CA	1946	334	185	UA	31.79	231	NW	18.24	141
ORLANDO, FL	SALT LAKE CITY, UT	1930	377	181	DL	53.85	220	HP	6.87	89
COLUMBUS, OH	LOS ANGELES, CA	1997	548	165	HP	40.48	162	NW	12.53	120
BALTIMORE, MD	PHOENIX, AZ	1998	1059	164	HP	42.9	161	CO	10.37	133
NASHVILLE, TN	SEATTLE, WA	1980	231	162	WN	31.67	151	NW	20.64	149
LAS VEGAS, NV	TAMPA, FL	1985	562	159	DL	32.15	175	HP	27.06	139
COLUMBUS, OH	SAN DIEGO, CA	1969	231	149	CO	19.41	126	NW	13.85	118
Mileage Block : 2001 to 2100 miles										
DETROIT, MI	SAN FRANCISCO, CA	2080	572	348	NW	57.25	410	HP	10.97	151
CINCINNATI, OH	SAN FRANCISCO, CA	2037	292	342	DL	72.71	374	UA	11.64	249
LAS VEGAS, NV	WASHINGTON, DC	2069	303	310	UA	48.35	365	TW	13.39	193
ATLANTA, GA	SACRAMENTO, CA	2094	218	285	DL	50	322	HP	19.34	196
PHILADELPHIA, PA	PHOENIX, AZ	2076	568	281	US	42.86	305	HP	29.08	271
CLEVELAND, OH	SEATTLE, WA	2024	194	251	CO	33.39	255	UA	21.16	237
DETROIT, MI	SAN JOSE, CA	2063	186	237	AA	33	212	AA	33	212
CLEVELAND, OH	LOS ANGELES, CA	2054	590	229	CO	58.25	245	HP	4.98	151
DETROIT, MI	OAKLAND, CA	2073	150	212	UA	30.36	292	WN	28.69	163
SAN DIEGO, CA	TAMPA, FL	2091	204	209	DL	27.99	201	WN	14	132
CLEVELAND, OH	SAN DIEGO, CA	2028	260	186	CO	47.87	183	CO	47.87	183
NEW ORLEANS, LA	SEATTLE, WA	2090	267	180	UA	21.79	184	NW	14.7	149
LAS VEGAS, NV	RALEIGH/DURHAM, NC	2030	301	178	DL	26.11	172	WN	12.98	170
LAS VEGAS, NV	ORLANDO, FL	2040	565	169	DL	42.49	181	HP	29.71	133
COLUMBUS, OH	SEATTLE, WA	2020	228	161	NW	36.43	139	CO	13.4	126
COLUMBUS, OH	PORTLAND, OR	2040	124	157	NW	30.71	123	CO	14.09	123
Mileage Block : 2101 to 2200 miles										
ATLANTA, GA	SAN JOSE, CA	2117	291	366	DL	54.92	413	HP	12.49	240
ATLANTA, GA	SAN FRANCISCO, CA	2139	1081	361	DL	59.79	418	UA	15.66	318
ATLANTA, GA	SEATTLE, WA	2183	532	318	DL	56.54	360	NW	9.01	179
BOSTON, MA	SALT LAKE CITY, UT	2106	284	311	DL	62.5	363	HP	12.6	119
ATLANTA, GA	PORTLAND, OR	2173	311	310	DL	66.86	337	TW	2.59	162
NEW YORK, NY	PHOENIX, AZ	2142	1702	296	HP	33.01	331	DL	16.26	232
CHARLOTTE, NC	LOS ANGELES, CA	2126	428	282	US	69.63	297	NW	3.28	180
ORLANDO, FL	SANTA ANA, CA	2191	136	273	DL	32.08	278	TW	10.53	208
PITTSBURGH, PA	SEATTLE, WA	2127	178	270	US	67.6	262	CO	2.01	240
NEW YORK, NY	TUCSON, AZ	2126	325	267	AA	30.68	296	HP	21.52	238
CLEVELAND, OH	SAN FRANCISCO, CA	2162	383	259	CO	60.32	269	CO	60.32	269
LOS ANGELES, CA	PITTSBURGH, PA	2137	413	257	US	65.87	267	NW	4.39	177
PITTSBURGH, PA	SAN DIEGO, CA	2108	175	245	US	72.57	240	NW	3.73	192
LAS VEGAS, NV	MIAMI, FL	2177	234	238	HP	53.56	192	HP	53.56	192
LOS ANGELES, CA	TAMPA, FL	2159	631	215	DL	43.72	234	WN	12.64	152
ORLANDO, FL	SAN DIEGO, CA	2151	287	208	DL	26.77	221	WN	12	140

Table 1

City-Pair		Market Data			Largest Carrier			Lowest Fare Carrier		
		Nonstop Distance	Psgs Per Day	Average One Way Fare	Carrier	Percent Market Share	Average One Way Fare 2/	Carrier	Percent Market Share	Average One Way Fare 2/
JACKSONVILLE, FL	LOS ANGELES, CA	2156	222	203	DL	40.57	223	AA	10.73	186
ONTARIO, CA	ORLANDO, FL	2175	178	188	DL	33.56	205	HP	11.49	139
RALEIGH/DURHAM, NC	SAN DIEGO, CA	2193	197	185	AA	33.19	190	UA	11.78	189
LAS VEGAS, NV	PHILADELPHIA, PA	2177	934	182	HP	37.43	174	N7	13.99	158
COLUMBUS, OH	SAN FRANCISCO, CA	2125	308	177	NW	20.11	131	NW	20.11	131
FT. LAUDERDALE, FL	LAS VEGAS, NV	2175	610	167	HP	46.02	149	HP	46.02	149
BALTIMORE, MD	LAS VEGAS, NV	2106	1068	152	HP	47.67	143	CO	11.32	133
Mileage Block : 2201 to 2300 miles										
SAN DIEGO, CA	WASHINGTON, DC	2255	559	367	UA	53.16	438	AA	24.07	240
LOS ANGELES, CA	WASHINGTON, DC	2289	1688	360	UA	52.73	401	AA	28.36	334
SANTA ANA, CA	WASHINGTON, DC	2279	206	350	UA	33.86	398	CO	12.2	196
PITTSBURGH, PA	SAN FRANCISCO, CA	2254	416	303	US	69.73	319	UA	10.22	286
CHARLOTTE, NC	SAN FRANCISCO, CA	2297	385	295	US	70.33	303	CO	1.84	188
CHARLOTTE, NC	SEATTLE, WA	2282	178	291	US	50.89	281	NW	10.89	264
BUFFALO, NY	LOS ANGELES, CA	2217	141	290	AA	26.77	299	NW	10.34	236
LOS ANGELES, CA	ORLANDO, FL	2217	1162	215	DL	49.39	220	DL	49.39	220
LAS VEGAS, NV	NEW YORK, NY	2243	3188	209	HP	27.51	174	HP	27.51	174
HARTFORD, CT	PHOENIX, AZ	2218	291	200	DL	18.18	189	WN	14.78	159
LOS ANGELES, CA	RALEIGH/DURHAM, NC	2239	427	192	AA	29.39	208	US	15.94	189
BALTIMORE, MD	SAN DIEGO, CA	2297	680	185	WN	16.05	167	HP	11.05	146
BALTIMORE, MD	ONTARIO, CA	2288	211	184	WN	22.71	195	AA	20.44	161
BALTIMORE, MD	RENO, NV	2295	134	173	NW	20.34	154	HP	17.25	143
MANCHESTER, NH	PHOENIX, AZ	2283	195	166	WN	28.6	158	NW	14.53	153
PHOENIX, AZ	PROVIDENCE, RI	2279	309	163	WN	32.67	145	WN	32.67	145
Mileage Block : 2301 to 2400 miles										
SEATTLE, WA	WASHINGTON, DC	2308	587	400	UA	58.9	474	AA	13.58	210
PHILADELPHIA, PA	SANTA ANA, CA	2380	155	369	AA	23.83	365	HP	20.04	280
PALM SPRINGS, CA	NEW YORK, NY	2370	139	367	AA	39.36	404	HP	12	325
SACRAMENTO, CA	WASHINGTON, DC	2364	180	358	UA	64	390	AA	14.46	251
LOS ANGELES, CA	MIAMI, FL	2342	757	351	AA	53.25	403	UA	19.35	364
RALEIGH/DURHAM, NC	SAN FRANCISCO, CA	2399	244	334	AA	21.88	372	CO	15.11	129
PORTLAND, OR	WASHINGTON, DC	2334	233	331	UA	56.58	372	NW	13.82	252
PHILADELPHIA, PA	SEATTLE, WA	2379	339	328	US	54.02	318	US	54.02	318
PHILADELPHIA, PA	SAN DIEGO, CA	2371	339	312	US	39.73	327	HP	14.74	198
LOS ANGELES, CA	NORFOLK, VA	2376	164	273	US	29.64	210	US	29.64	210
NORFOLK, VA	SAN DIEGO, CA	2334	173	263	US	36.64	179	US	36.64	179
LOS ANGELES, CA	WEST PALM BEACH, FL	2332	224	261	DL	60.42	266	AA	16.33	253
SAN FRANCISCO, CA	TAMPA, FL	2395	345	248	DL	29.67	281	NW	13.43	168
BOSTON, MA	PHOENIX, AZ	2301	615	236	HP	34.69	310	CO	22.44	133
BALTIMORE, MD	LOS ANGELES, CA	2330	1409	215	US	34.76	242	HP	10.27	138
FT. LAUDERDALE, FL	LOS ANGELES, CA	2343	710	208	DL	26.82	241	CO	11.18	161
BALTIMORE, MD	SEATTLE, WA	2337	570	199	UA	21.3	239	NW	16.61	175
BALTIMORE, MD	PORTLAND, OR	2361	333	191	UA	29.64	212	NW	21.78	152
BOSTON, MA	LAS VEGAS, NV	2382	894	188	HP	39.56	174	CO	11.63	134
BALTIMORE, MD	SACRAMENTO, CA	2399	234	186	UA	28.43	219	HP	16.43	144
HARTFORD, CT	LAS VEGAS, NV	2303	282	181	UA	18.87	171	WN	12.09	142
RALEIGH/DURHAM, NC	SEATTLE, WA	2360	230	177	UA	19.45	180	US	14.39	155
LAS VEGAS, NV	PROVIDENCE, RI	2367	232	162	WN	26.08	150	UA	25.7	140
Mileage Block: 2401 Miles or More										
SAN FRANCISCO, CA	WASHINGTON, DC	2420	1251	492	UA	71.95	556	CO	2.52	232
BOSTON, MA	SAN FRANCISCO, CA	2704	1709	453	UA	55.62	513	AA	21.73	415
BOSTON, MA	SAN JOSE, CA	2689	530	452	AA	70.43	477	NW	2.24	252

Table 1

City-Pair		Market Data			Largest Carrier			Lowest Fare Carrier		
		Nonstop Distance	Psgs Per Day	Average One Way Fare	Carrier	Percent Market Share	Average One Way Fare 2/	Carrier	Percent Market Share	Average One Way Fare 2/
SAN JOSE, CA	WASHINGTON, DC	2404	324	447	UA	59.32	505	UA	59.32	505
NEW YORK, NY	OAKLAND, CA	2569	94	409	UA	49.3	471	HP	22.16	251
NEW YORK, NY	SAN FRANCISCO, CA	2577	5713	404	UA	39.42	478	CO	15.95	358
PHILADELPHIA, PA	SAN FRANCISCO, CA	2522	910	392	UA	36.48	437	US	35.41	422
BOSTON, MA	PORTLAND, OR	2541	208	382	UA	31.58	490	DL	22.08	385
HARTFORD, CT	SAN FRANCISCO, CA	2627	261	379	UA	47.88	423	US	11.32	306
BOSTON, MA	SACRAMENTO, CA	2642	113	375	UA	40.58	445	HP	15	274
NEW YORK, NY	SEATTLE, WA	2402	1200	375	CO	31.47	403	CO	31.47	403
NEW YORK, NY	SAN JOSE, CA	2566	627	368	AA	45.59	369	CO	20.05	352
BOSTON, MA	LOS ANGELES, CA	2611	1374	364	AA	40.43	382	AA	40.43	382
PHILADELPHIA, PA	PORTLAND, OR	2412	118	364	UA	36.64	421	NW	10.84	289
BOSTON, MA	SANTA ANA, CA	2592	209	363	AA	22.7	458	HP	19.53	290
MIAMI, FL	SAN FRANCISCO, CA	2585	540	361	AA	49.56	381	AA	49.56	381
NEW YORK, NY	SANTA ANA, CA	2434	616	361	CO	48.54	372	HP	11.13	237
NEW YORK, NY	SACRAMENTO, CA	2512	212	352	UA	45.23	405	HP	13.5	263
LOS ANGELES, CA	NEW YORK, NY	2469	7340	342	AA	29.73	419	CO	16.07	293
NEW YORK, NY	SAN DIEGO, CA	2426	1242	335	CO	34.63	356	AA	26.75	353
BOSTON, MA	SEATTLE, WA	2496	527	334	AA	32.66	317	NW	21.52	297
NEW YORK, NY	PORTLAND, OR	2453	609	332	DL	25.12	350	CO	20.46	324
BOSTON, MA	SAN DIEGO, CA	2588	394	331	AA	45.64	353	HP	10.25	228
LOS ANGELES, CA	PHILADELPHIA, PA	2402	1054	331	US	38.35	382	UA	27.86	364
HARTFORD, CT	SEATTLE, WA	2438	110	325	UA	33.43	365	US	16.86	252
NEW YORK, NY	ONTARIO, CA	2425	145	317	HP	28.39	236	HP	28.39	236
NEW YORK, NY	RENO, NV	2408	142	297	UA	21.35	332	HP	13.29	225
MIAMI, FL	SEATTLE, WA	2724	215	293	AA	37.08	325	TW	13.83	221
ORLANDO, FL	SAN FRANCISCO, CA	2446	548	266	UA	45.36	294	DL	18.58	253
BALTIMORE, MD	SAN FRANCISCO, CA	2458	1053	256	US	37.02	256	US	37.02	256
ORLANDO, FL	SAN JOSE, CA	2423	246	251	DL	26.43	261	UA	20.15	258
HARTFORD, CT	SAN DIEGO, CA	2502	192	243	AA	27.83	263	US	10.54	220
HARTFORD, CT	LOS ANGELES, CA	2527	460	240	AA	38.22	248	AA	38.22	248
FT. LAUDERDALE, FL	SAN FRANCISCO, CA	2586	312	236	DL	34.3	240	CO	17.62	226
BALTIMORE, MD	SAN JOSE, CA	2441	303	220	UA	26.7	248	WN	19.74	173
FT. LAUDERDALE, FL	SEATTLE, WA	2721	243	217	DL	29.85	238	WN	13.27	154
SEATTLE, WA	TAMPA, FL	2525	242	200	DL	23.13	234	NW	16.88	187
PROVIDENCE, RI	SAN FRANCISCO, CA	2695	284	198	US	26.48	182	NW	13.37	156
ORLANDO, FL	SACRAMENTO, CA	2411	178	195	UA	34.15	199	HP	14.17	129
PROVIDENCE, RI	SEATTLE, WA	2502	206	187	NW	21.01	181	CO	10.82	174
BALTIMORE, MD	OAKLAND, CA	2448	319	185	WN	51.23	159	WN	51.23	159
ORLANDO, FL	PORTLAND, OR	2537	309	182	DL	25.89	206	WN	15.12	128
ORLANDO, FL	SEATTLE, WA	2555	582	181	DL	23.93	198	NW	19.54	170
PROVIDENCE, RI	SAN DIEGO, CA	2573	210	181	US	23.15	178	CO	13.54	160
LOS ANGELES, CA	MANCHESTER, NH	2591	264	177	US	28.5	166	WN	19.98	155
LOS ANGELES, CA	PROVIDENCE, RI	2595	501	177	WN	22.13	163	CO	10.26	162

Top 1,000 City-Pair Markets Summarized by City

Fourth Quarter 1999 vs. 1998
Markets with 100,000 or more Passengers
Sorted by Average Passenger Trip Distance

Table 2

City	Number of Markets	1999				1998			
		Passengers	Avg. Fare	Avg. Yield (cents) 3/	Avg. Psgr Distance	Passengers	Avg. Fare	Avg. Yield (cents) 3/	Avg. Psgr Distance
HARLINGEN, TX	4	129,020	80	23.8	335	124,730	81	23.8	338
BURBANK, CA	10	1,024,310	82	21.7	378	1,009,720	77	20.5	379
LUBBOCK, TX	4	159,960	84	22.1	381	161,330	83	21.5	384
MIDLAND/ODESSA, TX	4	139,190	88	21.1	418	137,730	91	21.9	414
AMARILLO, TX	4	124,110	90	20.5	437	122,220	90	20.7	433
BOISE, ID	10	351,760	88	19.5	452	335,540	87	19.2	452
LITTLE ROCK, AR	6	206,850	105	22.4	468	203,950	104	22.4	464
SPOKANE, WA	14	497,390	81	16.6	488	479,090	82	17.0	480
RICHMOND, VA	8	214,600	218	40.8	535	234,760	185	33.4	553
ROCHESTER, NY	8	204,420	163	30.1	539	229,300	152	27.9	543
JACKSON, MS	5	107,530	130	23.8	546	97,820	133	24.5	543
GREENSBORO, NC	9	281,120	156	28.6	547	257,750	170	30.5	556
OAKLAND, CA	22	2,017,060	97	17.2	566	1,829,520	96	17.5	547
RENO, NV	23	896,570	88	15.0	588	909,930	87	14.5	598
EL PASO, TX	11	406,880	111	18.7	593	388,610	112	19.1	588
KNOXVILLE, TN	5	104,170	133	22.2	597	92,310	143	24.0	597
TULSA, OK	14	400,130	127	21.2	599	399,200	126	21.2	594
MYRTLE BEACH, SC	6	134,060	97	14.8	651	93,480	106	15.7	675
ONTARIO, CA	23	1,148,510	106	15.9	665	1,090,120	104	16.3	642
SACRAMENTO, CA	21	1,378,050	111	16.2	684	1,315,130	105	15.7	669
DAYTON, OH	8	195,990	165	24.1	685	190,560	163	23.7	686
LOUISVILLE, KY	16	475,190	132	19.1	690	460,520	130	19.6	661
BIRMINGHAM, AL	12	327,450	130	18.9	690	303,200	134	19.7	682
SYRACUSE, NY	6	138,490	164	22.9	715	144,050	156	22.2	702
MEMPHIS, TN	17	517,680	177	24.6	718	501,860	173	24.5	706
JACKSONVILLE, FL	21	705,600	130	18.0	720	641,660	135	19.6	692
ST. LOUIS, MO	50	2,157,550	157	20.8	754	2,089,150	157	21.1	746
BUFFALO, NY	13	438,040	142	18.6	761	390,060	149	19.5	763
ATLANTA, GA	76	5,767,280	162	21.1	769	5,540,010	161	20.9	769
OKLAHOMA CITY, OK	19	439,870	138	17.9	770	439,690	134	17.6	761
RALEIGH/DURHAM, NC	34	1,397,270	144	18.4	780	1,016,530	183	23.9	766
CINCINNATI, OH	24	716,740	215	27.5	784	654,470	234	28.2	830
NASHVILLE, TN	33	1,202,120	138	17.5	791	1,131,720	145	18.4	791
CHARLOTTE, NC	32	954,610	240	30.2	794	927,150	236	31.5	748
SAN JOSE, CA	30	2,221,340	139	17.5	797	2,043,140	129	16.5	780
DALLAS, TX	75	5,485,100	186	23.0	809	5,463,150	183	22.7	805
CLEVELAND, OH	36	1,545,450	160	19.8	810	1,464,870	154	19.5	790
KANSAS CITY, MO	45	1,904,580	135	16.4	822	1,855,080	135	16.3	829
SAN ANTONIO, TX	28	996,800	140	17.0	822	963,510	138	17.1	805
TUCSON, AZ	15	474,960	127	15.4	825	454,030	128	15.3	835
ALBUQUERQUE, NM	28	904,670	133	16.0	836	887,450	132	15.5	850
SANTA ANA, CA	24	1,374,700	158	18.9	838	1,314,880	157	18.4	852
PITTSBURGH, PA	26	1,018,240	206	24.5	840	978,250	205	25.0	818
AUSTIN, TX	27	1,027,390	163	19.3	841	943,280	148	18.2	815

Table 2

City	Number of Markets	1999				1998			
		Passengers	Avg. Fare	Avg. Yield (cents) 3/	Avg. Psgr Distance	Passengers	Avg. Fare	Avg. Yield (cents) 3/	Avg. Psgr Distance
HOUSTON, TX	63	3,797,540	163	19.3	843	3,494,710	163	19.8	821
CHICAGO, IL	86	8,689,440	170	19.6	865	8,199,620	173	20.4	850
ATLANTIC CITY, NJ	9	161,440	110	12.7	868	149,270	99	11.7	849
WASHINGTON, DC	60	4,258,070	191	21.9	871	3,951,440	193	20.9	927
NEW ORLEANS, LA	34	1,527,540	138	15.8	872	1,434,460	135	15.7	857
NORFOLK, VA	9	215,920	171	19.6	874	210,020	168	19.2	871
OMAHA, NE	17	489,620	147	16.9	874	497,200	143	16.2	879
DETROIT, MI	52	3,132,010	153	17.5	876	2,935,310	151	17.8	844
SALT LAKE CITY, UT	39	1,619,360	136	15.4	883	1,590,450	137	15.4	889
ISLIP/LONG ISLAND, NY	7	316,130	103	11.6	889	127,610	126	12.4	1,011
MANCHESTER, NH	8	338,440	111	12.4	895	277,320	105	12.4	847
INDIANAPOLIS, IN	31	1,154,890	155	17.2	902	1,155,610	150	16.7	903
ALBANY, NY	6	135,110	170	18.2	934	140,200	156	17.0	916
DES MOINES, IA	8	109,710	194	20.7	937	120,610	183	19.6	935
COLUMBUS, OH	27	1,059,370	149	15.5	959	1,016,850	150	16.7	899
MINNEAPOLIS, MN	46	2,596,740	201	20.7	971	2,186,460	215	22.6	950
TAMPA, FL	49	2,710,440	137	14.0	979	2,448,940	137	14.1	970
PORTLAND, OR	35	1,906,500	137	13.8	990	1,791,300	138	13.9	994
PHOENIX, AZ	59	4,518,810	135	13.4	1,006	4,090,610	139	14.1	985
PHILADELPHIA, PA	45	2,449,590	213	21.0	1,014	2,367,640	209	20.7	1,011
MILWAUKEE, WI	22	814,410	164	16.1	1,019	699,590	175	16.7	1,044
LAS VEGAS, NV	63	5,275,940	120	11.7	1,022	4,416,860	120	12.3	979
CO SPRINGS, CO	26	297,890	197	19.2	1,026	354,400	174	17.3	1,004
DENVER, CO	59	3,324,160	213	20.7	1,030	3,184,500	209	20.4	1,024
SAN DIEGO, CA	46	2,745,100	145	13.8	1,049	2,585,630	142	13.7	1,034
BALTIMORE, MD	51	3,150,230	133	12.6	1,055	2,661,000	138	13.4	1,032
BOSTON, MA	53	4,118,400	199	18.6	1,067	3,831,970	199	17.9	1,108
SARASOTA, FL	6	113,210	155	14.6	1,068	116,600	149	13.9	1,074
ORLANDO, FL	71	4,551,040	136	12.6	1,074	4,242,880	135	12.7	1,067
FT. LAUDERDALE, FL	41	2,551,910	137	12.7	1,080	2,233,610	138	13.2	1,049
WEST PALM BEACH, FL	18	940,770	158	14.6	1,084	922,620	151	14.0	1,079
FT. MYERS, FL	21	708,920	151	13.8	1,093	684,610	144	13.2	1,087
PALM SPRINGS, CA	6	113,660	167	15.2	1,101	111,930	164	15.2	1,080
HARTFORD, CT	29	1,138,360	162	14.6	1,109	926,790	185	15.9	1,161
PROVIDENCE, RI	25	874,320	136	12.2	1,114	750,070	134	13.1	1,024
NEW YORK, NY	82	10,944,870	213	18.9	1,131	10,301,080	208	18.3	1,133
MIAMI, FL	37	1,737,100	186	15.7	1,185	1,776,490	175	14.6	1,197
SEATTLE, WA	56	3,488,610	159	13.0	1,228	3,185,820	158	13.0	1,214
LOS ANGELES, CA	63	6,769,550	177	13.7	1,292	6,373,040	176	13.3	1,318
SAN FRANCISCO, CA	54	4,472,600	222	15.6	1,416	4,287,630	209	14.8	1,409

City-Pair Markets with the Largest Percentage Increase in Average Fare
Fourth Quarter 1999 vs. 1998

City Pair		Average One Way Fare				Passengers			
		1999	1998	Amount Change	Percent Change	1999	1998	Amount Change	Percent Change
ATLANTIC CITY, NJ	DETROIT, MI	159	64	95	148.4	368	7,728	-7,280	-95.2
DES MOINES, IA	ORLANDO, FL	191	122	69	56.6	9,384	19,412	-9,919	-51.7
MINNEAPOLIS, MN	OMAHA, NE	230	147	83	56.5	19,596	26,864	-7,189	-27.1
ATLANTA, GA	RICHMOND, VA	175	115	60	52.2	50,784	66,332	-15,379	-23.4
AUSTIN, TX	BOSTON, MA	350	240	110	45.8	21,896	24,288	-2,366	-9.8
AUSTIN, TX	WASHINGTON, DC	291	211	80	37.9	30,912	32,384	-1,456	-4.5
CLEVELAND, OH	WASHINGTON, DC	151	111	40	36.0	29,072	36,616	-7,462	-20.6
ORLANDO, FL	TOLEDO, OH	152	112	40	35.7	4,324	6,624	-2,275	-34.7
CO SPRINGS, CO	ORLANDO, FL	206	152	54	35.5	10,948	16,652	-5,642	-34.3
ORLANDO, FL	RICHMOND, VA	170	126	44	34.9	14,352	20,332	-5,915	-29.4
CO SPRINGS, CO	SAN JOSE, CA	254	190	64	33.7	10,488	15,180	-4,641	-30.9
DETROIT, MI	RENO, NV	195	147	48	32.7	8,924	15,364	-6,370	-41.9
ATLANTA, GA	LOUISVILLE, KY	244	186	58	31.2	28,428	34,040	-5,551	-16.5
SAN FRANCISCO, CA	SANTA BARBARA, CA	123	94	29	30.9	27,416	29,808	-2,366	-8.0
ATLANTA, GA	RENO, NV	251	192	59	30.7	9,292	12,512	-3,185	-25.7
LOS ANGELES, CA	WASHINGTON, DC	360	276	84	30.4	155,296	200,376	-44,590	-22.5
TOTAL:						431,480	564,512	-131,586	-23.3

City-Pair Markets with the Largest Percentage Decrease in Average Fare

Fourth Quarter 1999 vs. 1998

Table 4

City Pair		Average One Way Fare				Passengers			
		1999	1998	Amount Change	Percent Change	1999	1998	Amount Change	Percent Change
BALTIMORE, MD	ISLIP/LONG ISLAND, NY	58	181	-123	-68.0	48,668	2,392	45,773	1,934.6
BALTIMORE, MD	RALEIGH/DURHAM, NC	69	205	-136	-66.3	47,012	12,604	34,034	273.0
CINCINNATI, OH	ST. LOUIS, MO	106	238	-132	-55.5	15,548	6,900	8,554	125.3
MILWAUKEE, WI	MINNEAPOLIS, MN	107	240	-133	-55.4	62,744	35,512	26,936	76.7
BUFFALO, NY	CHICAGO, IL	99	208	-109	-52.4	63,480	28,244	34,853	124.8
NASHVILLE, TN	RALEIGH/DURHAM, NC	81	168	-87	-51.8	47,656	19,872	27,482	139.8
BALTIMORE, MD	HARTFORD, CT	72	147	-75	-51.0	64,676	21,896	42,315	195.4
CHICAGO, IL	CINCINNATI, OH	124	252	-128	-50.8	106,076	59,616	45,955	77.9
CHICAGO, IL	RALEIGH/DURHAM, NC	102	200	-98	-49.0	106,996	66,976	39,585	59.8
CHICAGO, IL	HARTFORD, CT	147	273	-126	-46.2	94,760	55,844	38,493	69.7
RALEIGH/DURHAM, NC	WASHINGTON, DC	98	180	-82	-45.6	63,388	38,272	24,843	65.6
RALEIGH/DURHAM, NC	SEATTLE, WA	177	320	-143	-44.7	21,160	10,580	10,465	100.0
ATLANTA, GA	GULFPORT, MS	98	166	-68	-41.0	23,368	4,876	18,291	379.2
RALEIGH/DURHAM, NC	SAN DIEGO, CA	185	310	-125	-40.3	18,124	10,672	7,371	69.8
BUFFALO, NY	MINNEAPOLIS, MN	141	227	-86	-37.9	14,720	6,072	8,554	142.4
GULFPORT, MS	TAMPA, FL	89	143	-54	-37.8	9,936	828	9,009	1,100.0
AUSTIN, TX	RALEIGH/DURHAM, NC	190	304	-114	-37.5	17,572	11,408	6,097	54.0
PHOENIX, AZ	RALEIGH/DURHAM, NC	192	304	-112	-36.8	24,380	12,328	11,921	97.8
COLUMBUS, OH	PORTLAND, OR	157	246	-89	-36.2	11,408	7,084	4,277	61.0
PROVIDENCE, RI	SAN FRANCISCO, CA	198	310	-112	-36.1	26,128	7,728	18,200	238.1
CHICAGO, IL	ISLIP/LONG ISLAND, NY	108	167	-59	-35.3	38,364	10,304	27,755	272.3
ST. LOUIS, MO	WASHINGTON, DC	168	259	-91	-35.1	70,012	37,260	32,396	87.9
CINCINNATI, OH	KANSAS CITY, MO	152	232	-80	-34.5	18,584	10,948	7,553	69.7
LOS ANGELES, CA	RALEIGH/DURHAM, NC	192	292	-100	-34.2	39,284	22,264	16,835	76.4
CINCINNATI, OH	MINNEAPOLIS, MN	144	218	-74	-33.9	40,112	25,944	14,014	54.6
RALEIGH/DURHAM, NC	TAMPA, FL	89	134	-45	-33.6	50,692	28,520	21,931	77.7
PROVIDENCE, RI	RALEIGH/DURHAM, NC	113	168	-55	-32.7	16,560	7,084	9,373	133.8
DALLAS, TX	KNOXVILLE, TN	136	199	-63	-31.7	18,860	13,340	5,460	41.4
LAS VEGAS, NV	MINNEAPOLIS, MN	130	189	-59	-31.2	100,464	40,940	58,877	145.4
RALEIGH/DURHAM, NC	ST. LOUIS, MO	162	235	-73	-31.1	25,484	16,928	8,463	50.5
COLUMBUS, OH	SEATTLE, WA	161	232	-71	-30.6	20,976	13,984	6,916	50.0
MILWAUKEE, WI	WASHINGTON, DC	121	174	-53	-30.5	51,244	32,568	18,473	57.3
COLUMBUS, OH	WASHINGTON, DC	113	162	-49	-30.2	51,612	38,640	12,831	33.6
ATLANTA, GA	BALTIMORE, MD	132	189	-57	-30.2	109,204	77,004	31,850	41.8
TOTAL:						1,539,252	795,432	735,735	92.5

Table 5 (abridged):

Detailed Fare Information for Highest- and Lowest-Fare Markets Under 750 Miles

As discussed earlier in this report, airlines offer a wide variety of prices in any given market, and it is unlikely that the average fares listed in this report will match any particular fare being offered. A high average fare usually indicates that a broad range of fares is offered in the market. It is likely that low fare seats in these markets are offered in limited numbers, and are subject to various travel restrictions. Fares in markets with low average fares tend to be clustered closely around the average fare. Because only a small percentage of passengers in these markets pay high fares, it is much easier for consumers to find competitive prices. In markets with high average fares, consumers must make extra efforts to get low price service.

The attached table shows detailed fare and passenger data for all city-pairs with a stage length of less than 750 miles that have average fares above \$200. Fare and passenger information is provided for individual competitors in the market. Any airline that carries ten percent or more of the passengers in a market is considered a competitor for the purpose of this report. Following the high-fare markets, identical information is provided for city-pairs with a stage length of less than 750 miles that have an average fare of \$60 or less.

The markets covered in Table 5 were limited in this manner for the sake of brevity. The 750-mile stage length was chosen for demonstrative purposes, because a greater percentage of passengers are affected by fare disparities in short-haul markets with high average fares. The same data for all markets covered in this report can be found on the Internet at <http://ostpxweb.dot.gov/aviation> under "What's Hot."

For each competitor in the market, the table shows the number of passengers carried, the competitor's market share, and the competitor's average fare. To demonstrate the various levels of fares within these markets, we show the least and most expensive \$25 fare interval available to at least five percent of passengers in the market, along with the percentage of the competitor's passengers that flew in those fare intervals. The fare listed is the top of the \$25 fare increment. The last column shows the percentage of each competitor's traffic that flew at fares greater than three times the least expensive significant fare interval.

For example, American Airlines flew 14,840 passengers between Chicago and White Plains, NY, or 34% of market passengers, at an average fare of \$299. American's *Minimum \$25 Fare Interval* between Chicago and White Plains, NY is \$100; the percent of passengers in that interval was seven percent. This means that seven percent of American's passengers in this market paid between \$76 and \$100 each way. The \$76 to \$100 fare interval was the lowest in which at least five percent of American's passengers flew. American's *Maximum \$25 Fare Interval* is listed as \$575; the percentage of passengers in that interval was seven percent. This means that seven percent of American's Chicago-White Plains passengers paid between \$551 and \$575 each way. The \$551 to \$575 fare interval was the highest in which at least five percent of American's passengers flew. Fifty percent of American's passengers paid more than

\$300 each way (three times \$100, the top of the lowest significant fare interval for American in this market).

**Detailed Fare Information for City-Pair Markets
with Highest and Lowest Average Fares**

Fourth Quarter 1999

Table 5

Average Mkt Fare	Origin	Destination	Carrier	Psgs	Market Share	Average Fare	Minimum \$25 Fare Interval		Maximum \$25 Fare Interval		% Psgs Paying Over 3x the Minimum
							Fare	% Psgs	Fare	% Psgs	
<i>Markets Under 750 Miles, City-Pairs with Average Fares Above \$200</i>											
\$319	CHICAGO, IL	WHITE PLAINS, NY	AA	14,840	34%	\$299	\$100	7%	\$575	7%	50%
			UA	26,460	60%	\$331	\$125	11%	\$575	17%	45%
\$284	INDIANAPOLIS, IN	MINNEAPOLIS, MN	NW	22,340	87%	\$295	\$125	14%	\$500	26%	40%
\$281	CHICAGO, IL	RICHMOND, VA	UA	21,830	82%	\$283	\$125	11%	\$525	17%	33%
\$281	CLEVELAND, OH	PHILADELPHIA, PA	CO	15,430	50%	\$291	\$100	8%	\$475	5%	52%
			US	14,310	46%	\$275	\$100	11%	\$450	24%	48%
\$280	CLEVELAND, OH	MINNEAPOLIS, MN	CO	9,170	32%	\$290	\$125	18%	\$475	36%	45%
			NW	15,740	56%	\$291	\$125	14%	\$475	27%	43%
\$275	COLUMBUS, OH	MINNEAPOLIS, MN	NW	15,280	78%	\$291	\$125	11%	\$475	27%	42%
\$270	ALLENTOWN, PA	CHICAGO, IL	UA	10,190	85%	\$275	\$125	14%	\$525	12%	33%
\$262	BOSTON, MA	DETROIT, MI	NW	56,380	85%	\$271	\$100	5%	\$525	21%	38%
\$260	CINCINNATI, OH	PHILADELPHIA, PA	DL	19,600	60%	\$246	\$100	11%	\$475	14%	41%
			US	11,440	35%	\$283	\$100	10%	\$475	26%	50%
\$257	BALTIMORE, MD	CINCINNATI, OH	DL	11,570	82%	\$267	\$100	8%	\$425	17%	49%
\$257	MEMPHIS, TN	MINNEAPOLIS, MN	NW	14,720	88%	\$268	\$125	19%	\$475	21%	35%
\$256	CHARLOTTE, NC	CHICAGO, IL	UA	18,670	33%	\$257	\$125	18%	\$450	18%	30%
			US	33,780	59%	\$259	\$125	14%	\$450	26%	34%
\$255	PHILADELPHIA, PA	PROVIDENCE, RI	US	15,220	98%	\$257	\$75	6%	\$375	36%	69%
\$254	CHARLOTTE, NC	RICHMOND, VA	US	13,740	98%	\$255	\$125	7%	\$325	42%	0%
\$253	ATLANTA, GA	NASHVILLE, TN	DL	28,520	99%	\$254	\$100	9%	\$375	21%	50%
\$252	ATLANTA, GA	CINCINNATI, OH	DL	36,220	96%	\$256	\$100	7%	\$475	16%	43%
\$252	DALLAS, TX	OMAHA, NE	AA	14,450	77%	\$267	\$125	13%	\$525	9%	30%
\$251	CHARLOTTE, NC	DETROIT, MI	NW	13,150	47%	\$265	\$100	8%	\$450	20%	47%
			US	13,130	47%	\$245	\$75	10%	\$450	23%	43%
\$251	DETROIT, MI	MEMPHIS, TN	NW	14,660	84%	\$267	\$125	19%	\$475	17%	32%
\$250	PHILADELPHIA, PA	RICHMOND, VA	US	15,430	98%	\$251	\$125	7%	\$325	42%	0%
\$249	CHARLOTTE, NC	PHILADELPHIA, PA	US	44,240	95%	\$253	\$75	6%	\$400	24%	56%
\$249	DENVER, CO	TULSA, OK	AA	2,910	17%	\$228	\$125	9%	\$275	9%	9%
			UA	12,680	76%	\$257	\$125	10%	\$525	15%	26%
\$249	DETROIT, MI	HARTFORD, CT	NW	17,980	80%	\$267	\$100	6%	\$425	28%	46%
\$247	ATLANTA, GA	JACKSON, MS	DL	17,970	97%	\$247	\$125	18%	\$450	20%	30%
\$245	CHARLOTTE, NC	CLEVELAND, OH	CO	3,770	21%	\$237	\$125	22%	\$400	26%	27%
			US	12,760	72%	\$251	\$125	9%	\$400	32%	36%
\$245	CHARLOTTE, NC	HARTFORD, CT	US	21,140	91%	\$253	\$75	7%	\$450	22%	46%
\$245	CHARLOTTE, NC	MEMPHIS, TN	US	13,960	87%	\$245	\$100	5%	\$425	24%	39%
\$244	ATLANTA, GA	LOUISVILLE, KY	DL	27,370	96%	\$246	\$100	6%	\$400	21%	41%
\$244	HUNTSVILLE/DECA	WASHINGTON, DC	DL	5,620	26%	\$283	\$125	6%	\$425	12%	17%
			US	15,480	71%	\$233	\$150	7%	\$350	15%	1%
\$241	CHICAGO, IL	WICHITA, KS	TW	1,190	10%	\$323	\$125	8%	\$525	8%	33%
			UA	9,790	85%	\$230	\$125	23%	\$525	12%	22%
\$238	CHARLOTTE, NC	ST. LOUIS, MO	TW	8,480	46%	\$254	\$50	7%	\$475	7%	65%

**Detailed Fare Information for City-Pair Markets
with Highest and Lowest Average Fares**

Fourth Quarter 1999

Table 5

Average Mkt Fare	Origin	Destination	Carrier	Psgrs	Market Share	Average Fare	Minimum \$25 Fare Interval		Maximum \$25 Fare Interval		% Psgrs Paying Over 3x the Minimum
							Fare	% Psgrs	Fare	% Psgrs	
			US	8,710	47%	\$225	\$75	9%	\$500	7%	34%
\$238	PITTSBURGH, PA	ST. LOUIS, MO	TW	10,300	65%	\$253	\$125	15%	\$425	18%	24%
			US	4,380	28%	\$225	\$125	22%	\$425	20%	24%
\$237	BALTIMORE, MD	CHARLOTTE, NC	US	24,080	95%	\$238	\$75	8%	\$375	32%	57%
\$235	DENVER, CO	WICHITA, KS	UA	8,570	99%	\$234	\$125	8%	\$500	14%	21%
\$235	DETROIT, MI	PROVIDENCE, RI	NW	11,850	65%	\$271	\$100	6%	\$450	30%	46%
			WN	4,740	26%	\$144	\$125	41%	\$200	29%	
\$235	INDIANAPOLIS, IN	PHILADELPHIA, PA	US	30,220	84%	\$242	\$100	6%	\$450	18%	38%
\$234	CINCINNATI, OH	NEW YORK, NY	CO	13,670	15%	\$261	\$100	13%	\$475	22%	45%
			DL	70,420	75%	\$234	\$75	7%	\$475	13%	42%
\$234	CO SPRINGS, CO	OKLAHOMA CITY, OK	AA	870	33%	\$231	\$125	15%	\$250	24%	11%
			DL	330	13%	\$233	\$100	18%	\$450	15%	27%
			UA	1,410	54%	\$233	\$125	20%	\$450	10%	15%
\$234	HARTFORD, CT	PHILADELPHIA, PA	US	23,560	98%	\$235	\$100	6%	\$325	34%	36%
\$233	BOSTON, MA	CHARLOTTE, NC	US	39,840	91%	\$234	\$75	6%	\$425	20%	42%
\$232	ATLANTA, GA	LEXINGTON/FRANKFURT, KY	DL	10,900	98%	\$233	\$125	14%	\$400	20%	26%
\$232	CINCINNATI, OH	DETROIT, MI	DL	2,900	28%	\$223	\$100	7%	\$325	30%	32%
			NW	7,290	69%	\$237	\$100	8%	\$325	34%	37%
\$231	ATLANTA, GA	COLUMBIA, SC	DL	8,520	98%	\$232	\$100	6%	\$350	30%	42%
\$231	CLEVELAND, OH	NEW YORK, NY	AA	16,880	15%	\$193	\$75	14%	\$475	6%	30%
			CO	88,390	76%	\$244	\$100	14%	\$475	20%	36%
\$231	COLUMBUS, OH	PHILADELPHIA, PA	US	23,540	92%	\$236	\$100	14%	\$425	22%	39%
\$231	DENVER, CO	DES MOINES, IA	UA	10,310	93%	\$232	\$125	10%	\$500	6%	19%
\$230	BOISE, ID	DENVER, CO	DL	2,850	18%	\$197	\$100	6%	\$275	6%	14%
			UA	12,320	77%	\$240	\$125	15%	\$550	6%	21%
\$230	CHARLOTTE, NC	NEW YORK, NY	CO	19,820	15%	\$229	\$100	9%	\$425	20%	35%
			US	101,580	78%	\$233	\$100	7%	\$425	20%	40%
\$230	DETROIT, MI	WHITE PLAINS, NY	NW	15,640	93%	\$230	\$100	17%	\$450	16%	34%
\$230	MINNEAPOLIS, MN	NASHVILLE, TN	NW	13,610	78%	\$247	\$125	20%	\$475	18%	29%
\$230	MINNEAPOLIS, MN	OMAHA, NE	NW	19,430	99%	\$230	\$100	7%	\$325	40%	41%
\$230	PITTSBURGH, PA	WASHINGTON, DC	US	29,340	97%	\$231	\$125	11%	\$325	38%	1%
\$229	ALBANY, NY	CHICAGO, IL	AA	8,750	42%	\$238	\$100	7%	\$575	7%	30%
			UA	8,950	43%	\$226	\$100	6%	\$575	8%	22%
\$229	CHARLOTTE, NC	PITTSBURGH, PA	US	19,080	95%	\$232	\$75	9%	\$400	19%	44%
\$229	CHICAGO, IL	HARRISBURG, PA	AA	5,310	28%	\$233	\$100	7%	\$400	9%	32%
			UA	10,620	56%	\$234	\$100	9%	\$400	10%	34%
			US	1,990	11%	\$197	\$100	16%	\$225	15%	16%
\$229	CO SPRINGS, CO	KANSAS CITY, MO	UA	3,320	80%	\$234	\$100	11%	\$350	6%	22%
\$229	DALLAS, TX	NASHVILLE, TN	AA	26,860	61%	\$245	\$125	16%	\$500	8%	25%
			DL	7,800	18%	\$216	\$100	11%	\$500	9%	23%
			WN	4,650	10%	\$196	\$150	20%	\$275	26%	0%
\$229	MINNEAPOLIS, MN	ST. LOUIS, MO	NW	20,050	43%	\$235	\$100	13%	\$375	25%	40%
			TW	22,790	49%	\$235	\$100	11%	\$375	21%	45%
\$228	CHICAGO, IL	ROCHESTER, NY	AA	8,600	41%	\$226	\$75	7%	\$500	5%	40%

**Detailed Fare Information for City-Pair Markets
with Highest and Lowest Average Fares**

Fourth Quarter 1999

Table 5

Average Mkt Fare	Origin	Destination	Carrier	Psgs	Market Share	Average Fare	Minimum \$25 Fare Interval		Maximum \$25 Fare Interval		% Psgs Paying Over 3x the Minimum
							Fare	% Psgs	Fare	% Psgs	
			UA	11,220	53%	\$230	\$75	5%	\$525	7%	39%
\$228	DENVER, CO	OKLAHOMA CITY, OK	UA	14,420	84%	\$235	\$125	14%	\$525	12%	20%
\$227	CHARLOTTE, NC	NASHVILLE, TN	US	19,000	91%	\$230	\$50	6%	\$375	33%	61%
\$227	CHICAGO, IL	SYRACUSE, NY	AA	7,000	35%	\$216	\$100	6%	\$525	5%	25%
			UA	10,250	51%	\$236	\$125	21%	\$525	12%	23%
\$227	DETROIT, MI	PITTSBURGH, PA	NW	8,900	45%	\$224	\$75	6%	\$325	39%	64%
			US	10,730	54%	\$229	\$100	7%	\$325	40%	41%
\$226	HARTFORD, CT	PITTSBURGH, PA	US	20,320	94%	\$229	\$75	6%	\$425	21%	43%
\$225	INDIANAPOLIS, IN	NEW YORK, NY	CO	32,880	40%	\$242	\$100	15%	\$475	18%	35%
			US	32,930	40%	\$226	\$100	10%	\$475	19%	31%
\$224	NEW YORK, NY	RICHMOND, VA	CO	16,740	34%	\$244	\$100	12%	\$350	33%	44%
			US	28,210	57%	\$220	\$100	9%	\$325	35%	39%
\$223	DALLAS, TX	LOUISVILLE, KY	AA	11,390	45%	\$231	\$75	8%	\$475	8%	37%
			DL	7,650	30%	\$223	\$75	9%	\$475	10%	34%
\$223	LOUISVILLE, KY	NEW YORK, NY	CO	9,190	26%	\$245	\$100	6%	\$475	5%	37%
			DL	4,620	13%	\$228	\$75	6%	\$450	6%	37%
			US	17,360	48%	\$219	\$75	5%	\$475	14%	30%
\$222	CHARLOTTE, NC	JACKSONVILLE, FL	US	11,560	91%	\$220	\$75	6%	\$375	21%	51%
\$221	ATLANTA, GA	LITTLE ROCK, AR	DL	16,720	90%	\$225	\$100	8%	\$400	15%	35%
\$220	CO SPRINGS, CO	TULSA, OK	AA	920	30%	\$224	\$125	7%	\$250	7%	14%
			UA	1,790	58%	\$227	\$150	22%	\$525	8%	9%
\$219	BIRMINGHAM, AL	WASHINGTON, DC	DL	5,600	49%	\$263	\$125	16%	\$450	15%	34%
			US	4,450	39%	\$185	\$75	9%	\$450	7%	19%
\$219	BOSTON, MA	CLEVELAND, OH	CO	33,950	77%	\$224	\$100	12%	\$500	19%	30%
			DL	5,040	11%	\$208	\$100	12%	\$500	12%	27%
\$218	ATLANTA, GA	PITTSBURGH, PA	DL	28,670	54%	\$223	\$75	5%	\$475	13%	37%
			US	22,010	42%	\$213	\$100	12%	\$475	15%	26%
\$218	ATLANTA, GA	ROCHESTER, NY	DL	11,440	77%	\$221	\$100	6%	\$525	10%	27%
			US	1,780	12%	\$216	\$100	8%	\$175	13%	25%
\$217	CHARLESTON, SC	WASHINGTON, DC	DL	2,180	13%	\$212	\$75	6%	\$425	9%	37%
			US	13,390	80%	\$222	\$100	12%	\$425	10%	21%
\$217	DALLAS, TX	MEMPHIS, TN	AA	15,040	53%	\$226	\$75	6%	\$425	16%	44%
			DL	6,930	25%	\$204	\$75	8%	\$425	14%	37%
			NW	5,270	19%	\$208	\$75	6%	\$425	16%	35%
\$216	CHARLOTTE, NC	INDIANAPOLIS, IN	US	12,610	89%	\$217	\$75	5%	\$400	22%	39%
\$216	GREENSBORO, NC	WASHINGTON, DC	US	9,090	98%	\$216	\$100	9%	\$300	34%	6%
\$214	ATLANTA, GA	INDIANAPOLIS, IN	DL	35,420	84%	\$222	\$100	9%	\$450	18%	32%
\$214	COLUMBUS, OH	NEW YORK, NY	CO	20,770	23%	\$238	\$100	13%	\$425	20%	39%
			HP	27,890	31%	\$194	\$50	6%	\$425	6%	47%
			US	34,300	39%	\$218	\$75	5%	\$450	15%	32%
\$213	BUFFALO, NY	PHILADELPHIA, PA	US	15,770	96%	\$215	\$100	22%	\$350	31%	37%
\$213	CHICAGO, IL	DAYTON, OH	AA	3,870	20%	\$224	\$100	7%	\$350	16%	33%
			TZ	3,100	16%	\$128	\$100	19%	\$150	53%	0%
			UA	11,420	60%	\$232	\$75	7%	\$350	26%	59%
\$213	CHICAGO, IL	PHILADELPHIA, PA	AA	41,410	21%	\$229	\$100	14%	\$500	7%	35%

**Detailed Fare Information for City-Pair Markets
with Highest and Lowest Average Fares**

Fourth Quarter 1999

Table 5

Average Mkt Fare	Origin	Destination	Carrier	Psgs	Market Share	Average Fare	Minimum \$25 Fare Interval		Maximum \$25 Fare Interval		% Psgs Paying Over 3x the Minimum
							Fare	% Psgs	Fare	% Psgs	
\$213	DALLAS, TX	ST. LOUIS, MO	TZ	30,710	16%	\$120	\$100	11%	\$175	9%	0%
			UA	70,260	36%	\$241	\$100	11%	\$500	12%	37%
			US	46,470	24%	\$219	\$100	14%	\$500	13%	31%
\$213	DALLAS, TX	ST. LOUIS, MO	AA	30,320	38%	\$232	\$125	14%	\$475	8%	21%
			TW	31,900	40%	\$231	\$125	13%	\$475	11%	25%
			WN	11,390	14%	\$137	\$100	41%	\$200	26%	0%
\$212	CHARLOTTE, NC	WASHINGTON, DC	US	45,630	95%	\$214	\$50	5%	\$350	23%	55%
\$212	CHICAGO, IL	NEW YORK, NY	AA	203,540	30%	\$239	\$100	7%	\$200	6%	32%
			CO	122,790	18%	\$189	\$75	6%	\$200	7%	21%
			UA	242,660	36%	\$226	\$100	8%	\$525	7%	27%
\$211	ATLANTA, GA	CHARLOTTE, NC	DL	35,780	70%	\$211	\$175	8%	\$325	10%	0%
			US	14,780	29%	\$209	\$100	8%	\$325	13%	14%
\$211	CLEVELAND, OH	MILWAUKEE, WI	CO	7,920	38%	\$202	\$75	9%	\$325	34%	46%
			YX	12,030	57%	\$217	\$75	10%	\$325	39%	58%
\$210	CHICAGO, IL	NORFOLK, VA	DL	2,430	11%	\$195	\$100	14%	\$275	6%	14%
			UA	15,370	68%	\$222	\$125	13%	\$525	9%	17%
\$210	DAYTON, OH	WASHINGTON, DC	US	21,330	90%	\$212	\$75	9%	\$375	15%	56%
\$209	ATLANTA, GA	ST. LOUIS, MO	DL	31,160	51%	\$208	\$75	6%	\$375	17%	41%
			TW	25,400	42%	\$220	\$50	5%	\$375	18%	54%
\$209	CHICAGO, IL	GRAND RAPIDS, MI	AA	3,970	31%	\$231	\$75	10%	\$350	24%	60%
			TZ	1,700	13%	\$133	\$100	12%	\$200	8%	
			UA	6,830	54%	\$216	\$75	12%	\$350	26%	55%
\$209	PORTLAND, ME	WASHINGTON, DC	US	10,620	91%	\$212	\$125	15%	\$400	5%	7%
\$207	MILWAUKEE, WI	PHILADELPHIA, PA	US	9,070	33%	\$210	\$100	10%	\$350	7%	31%
			YX	14,000	51%	\$210	\$125	15%	\$350	7%	0%
\$206	ATLANTIC CITY, N	BOSTON, MA	99	40	11%	\$177	\$150	50%	\$275	25%	
			US	320	89%	\$209	\$75	6%	\$375	9%	38%
\$205	ATLANTA, GA	CHARLESTON, SC	DL	20,620	97%	\$205	\$50	6%	\$400	18%	50%
\$205	DALLAS, TX	DES MOINES, IA	AA	9,450	73%	\$206	\$125	25%	\$525	6%	16%
			TW	1,920	15%	\$201	\$100	5%	\$400	8%	26%
\$204	CHARLOTTE, NC	NEW ORLEANS, LA	DL	2,290	16%	\$205	\$100	10%	\$275	6%	18%
			US	11,160	78%	\$203	\$75	6%	\$450	11%	26%
\$204	PHILADELPHIA, PA	ROCHESTER, NY	US	15,520	97%	\$206	\$75	7%	\$325	28%	52%
\$202	HOUSTON, TX	MEMPHIS, TN	CO	8,270	48%	\$212	\$75	6%	\$400	27%	40%
			NW	6,360	37%	\$199	\$100	13%	\$400	20%	31%
\$202	NASHVILLE, TN	PHILADELPHIA, PA	US	24,450	82%	\$202	\$100	11%	\$425	15%	28%
\$201	CHICAGO, IL	MEMPHIS, TN	AA	5,330	13%	\$211	\$100	15%	\$375	11%	27%
			NW	13,010	31%	\$216	\$100	12%	\$400	5%	32%
			UA	18,820	45%	\$197	\$100	17%	\$375	13%	26%
Markets Under 750 Miles, City-Pairs with Average Fares Under \$60											
\$60	BALTIMORE, MD	MANCHESTER, NH	US	44,970	32%	\$63	\$50	30%	\$100	7%	2%
			WN	94,710	67%	\$58	\$50	38%	\$75	62%	0%
\$60	BALTIMORE, MD	PROVIDENCE, RI	US	54,950	30%	\$65	\$50	28%	\$100	6%	1%
			WN	127,760	70%	\$58	\$50	36%	\$75	63%	0%
\$60	BOISE, ID	SPOKANE, WA	AS	13,860	35%	\$69	\$50	31%	\$100	41%	1%

**Detailed Fare Information for City-Pair Markets
with Highest and Lowest Average Fares**

Fourth Quarter 1999

Table 5

Average Mkt Fare	Origin	Destination	Carrier	Psgs	Market Share	Average Fare	Minimum \$25 Fare Interval		Maximum \$25 Fare Interval		% Psgs Paying Over 3x the Minimum
							Fare	% Psgs	Fare	% Psgs	
\$60	BURBANK, CA	PHOENIX, AZ	WN	25,330	65%	\$55	\$50	62%	\$100	23%	0%
			HP	45,190	36%	\$53	\$50	57%	\$75	36%	2%
			WN	78,410	63%	\$63	\$50	43%	\$100	43%	0%
\$60	KANSAS CITY, MO	ST. LOUIS, MO	TW	51,690	56%	\$61	\$50	37%	\$75	52%	1%
			WN	40,050	44%	\$58	\$50	42%	\$75	58%	0%
\$60	LOS ANGELES, CA	PHOENIX, AZ	HP	85,350	26%	\$54	\$50	57%	\$75	33%	2%
			UA	55,640	17%	\$63	\$50	47%	\$100	23%	2%
			WN	185,890	56%	\$62	\$50	49%	\$100	42%	0%
\$60	ONTARIO, CA	PHOENIX, AZ	HP	28,860	19%	\$54	\$50	50%	\$75	35%	1%
			WN	121,280	80%	\$61	\$50	47%	\$100	42%	0%
\$60	PORTLAND, OR	SPOKANE, WA	AS	29,980	42%	\$69	\$50	52%	\$125	26%	4%
			WN	41,260	58%	\$53	\$50	61%	\$100	26%	0%
\$59	LOUISVILLE, KY	ST. LOUIS, MO	TW	8,530	39%	\$60	\$50	48%	\$100	25%	2%
			WN	13,400	61%	\$57	\$50	50%	\$100	37%	0%
\$58	BALTIMORE, MD	ISLIP/LONG ISLAND	WN	48,500	100%	\$58	\$50	39%	\$75	61%	0%
\$58	OAKLAND, CA	RENO, NV	WN	49,500	99%	\$58	\$50	47%	\$100	38%	0%
\$57	SEATTLE, WA	SPOKANE, WA	AS	127,680	67%	\$60	\$50	47%	\$100	30%	1%
			WN	63,020	33%	\$52	\$50	63%	\$100	22%	0%
\$55	RENO, NV	SAN JOSE, CA	AA	12,140	18%	\$53	\$50	65%	\$75	29%	1%
			WN	53,280	81%	\$56	\$50	48%	\$75	52%	0%

Special Feature

Southwest Service to Raleigh/Durham

Table 4 of this report lists city-pairs that have experienced at least a 30% drop in average fare compared to the average fare in the fourth quarter of 1998. This quarter, Raleigh/Durham, North Carolina is well represented in Table 4, comprising twelve of the 34 city-pairs on the list.

Southwest Airlines entered the Raleigh/Durham market in June of 1999, providing nonstop service between Raleigh and Baltimore, Chicago-Midway, Nashville, Orlando, and Tampa. MetroJet, the US Airways low-fare subsidiary, also serves Raleigh/Durham nonstop to Boston, Orlando, Tampa, and Washington, DC. Low-fare Delta Express has been a competitor in the Raleigh-Orlando market since 1997.

In order to demonstrate the impact that low-fare service has on traffic and fares, we will examine the change in passenger distribution in the seven aforementioned Raleigh/Durham markets before and after low-fare competition was introduced. Two of those markets – Raleigh/Durham to Boston and Orlando – did not experience a large enough fare reduction in the fourth quarter of 1999 to merit inclusion in Table 4. However, as demonstrated in the table below, fare reductions in those city-pairs fell just short of the 30% criteria, at 29% and 28% respectively.

Raleigh/Durham to -	Average One-Way fare			Passengers		
	1999/4	1998/4	% Change	1999/4	1998/4	% Change
Baltimore, MD	\$69	\$205	-66%	47,012	12,604	273%
Boston, MA	\$132	\$187	-29%	68,172	53,820	27%
Chicago, IL	\$102	\$200	-49%	106,996	66,976	60%
Nashville, TN	\$81	\$168	-52%	47,656	19,872	140%
Orlando, FL	\$81	\$113	-28%	78,844	46,920	68%
Tampa, FL	\$89	\$134	-34%	50,692	28,520	78%
Washington, DC	\$98	\$180	-46%	63,388	38,272	66%

Discretionary Markets

Within the list of seven city-pairs under consideration, Orlando and Tampa are two that are considered traditional discretionary markets. Discretionary markets are heavily traveled by vacationers with flexible travel requirements. As a result, carriers are less able to price discriminate. Even in the absence of low-fare competition, economical fares are generally easy to obtain in discretionary markets. The majority of seats sold in discretionary markets, even without low-fare competition, are at low fare levels. In spite of the relative abundance of seats at low-fare levels, the below charts demonstrate the potential for growth in discretionary markets when more low-fare seats are made available.

The introduction of low-fare service in these markets (or the increase in low-fare service, as was the case in Orlando) not only shifted the fare at which the majority of passengers flew to a lower level, but overall traffic increased greatly. The most frequently sold fare in both markets shifted from between \$76 and \$100 each way to between \$51 and \$75. Traffic grew by 68% between Raleigh and Orlando and by 78% between Raleigh and Tampa.

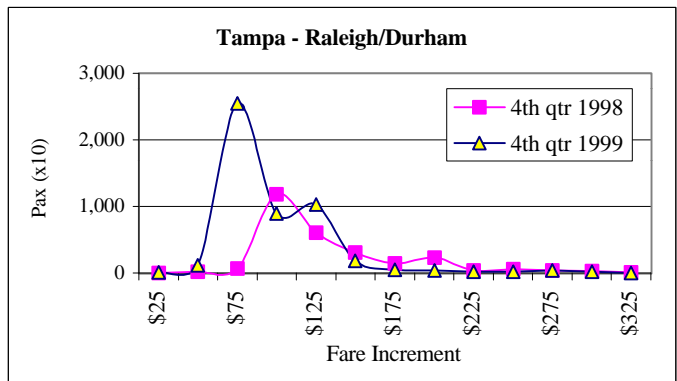
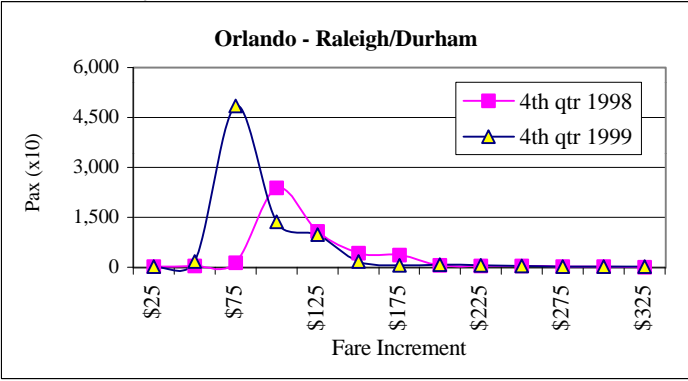
Non-discretionary Markets

The remaining five city-pairs are not vacation markets. Traffic in non-discretionary markets is generally comprised of a more even mix of leisure and business passengers. Time sensitivity on the part of business travelers increase an airline's ability to price discriminate through yield management and the application of travel restrictions. In all five non-discretionary city-pairs the 'before' distribution of passengers reveal a similar pattern. Fares are sold to passengers in two distinct clusters: the first cluster appears between the \$76 and \$125 fare categories. The fare level of the second cluster varies by city-pair, but is found in all cases at or above the \$250 level each way.

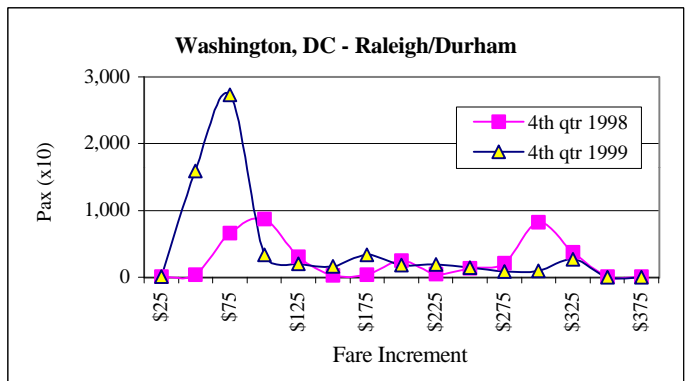
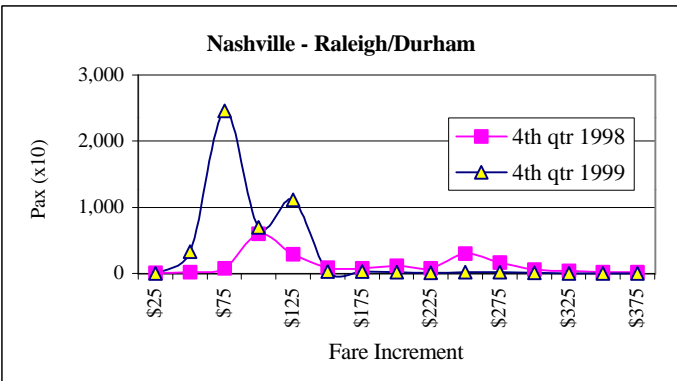
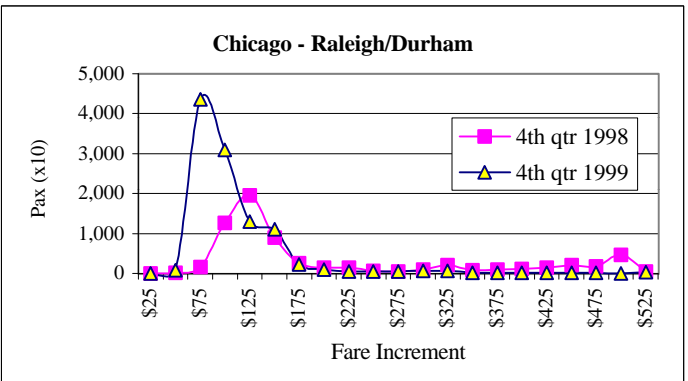
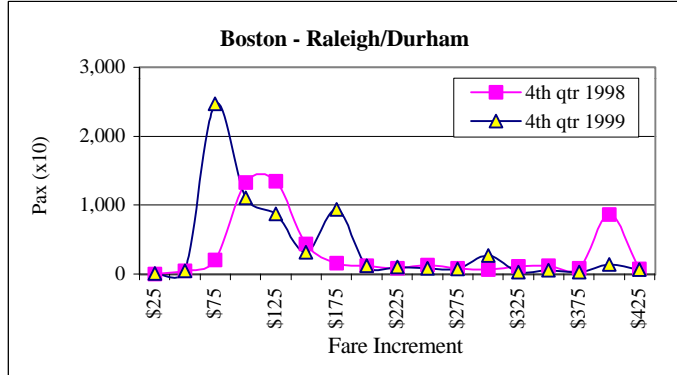
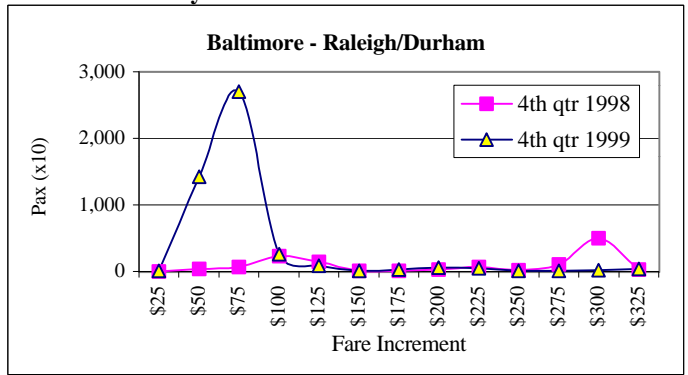
The introduction of low-fare competition in all five city-pairs alters the distribution of traffic across fares in a like manner. The first cluster shifted to a lower fare level (as occurred in Tampa and Orlando), and expanded considerably. The high-end cluster dissipates altogether or shifts to a lower level as well. Most notable is the overall passenger growth in non-discretionary markets when more low-fare seats become available. This growth, as well as the shift in passenger mix, suggests that the dual-clustered passenger mix found in all five markets prior to low-fare entry was not representative of free market demand, but was dictated by supplier-controlled seats and fares.

Special Feature Charts
4th Quarter 1999

Discretionary Markets



Non-discretionary Markets



Carrier Code Identifier and Footnotes

<u>Code</u>	<u>Name</u>	<u>Code</u>	<u>Name</u>
AA	American Airlines	P9	ProAir
AS	Alaska Airlines	QQ	Reno
CO	Continental Airlines	SY	Sun Country
DL	Delta Airlines	TW	Trans World Airlines
F9	Frontier Airlines	TZ	American Trans Air
FF	Tower Air	UA	United Airlines
FL	AirTran Airways	US	US Airways
HP	America West Airlines	W9	Eastwind Airlines
JI	Midway Airlines	WN	Southwest Airlines
N7	National Airlines	YX	Midwest Express Airlines
NJ	Vanguard Airlines	ZA	Access Air
NK	Spirit Airlines		
NW	Northwest Airlines		

Data Source:

Origin and Destination Survey of Airline Passengers submitted by certificated airlines. A ten- percent sample of passenger tickets. Information in this report extracted from DB1B, using directional components of domestic itineraries (fares passengers only).

1/ Limited to carriers with a 10 percent or greater share of the market. In markets where only a single carrier has a 10 percent or greater share we have shown the lowest fare for any carrier that accounts for one percent of more of total traffic.

2/ Airlines tend to offer a wide variety of fares in any given market. Carriers with higher average prices may offer some seats at prices as low as, or even lower, than carriers with much lower average prices.

3/ Average fare per mile computed by dividing the average fare by the average passenger trip length.