



# US Department of Transportation



## *FY 2025 RAISE - Round 2 Location Designations*

December 12, 2024



## Today's Webinar

- What are RAISE location designations?
- How do you determine the location designations for your project?
- What if your project crosses multiple designations?
- How to prepare a spatial file to submit with your application
- Q & A



# Webinar Information

**All participants automatically join on mute, with cameras off**

## Audio

- Select “Computer Audio” or
- Call: 669-254-5252
  - Webinar ID: 161 251 9409
  - Passcode: 545192

## Closed Captioning

- Available during the webinar

## Technical Support

- Email: [webconference@dot.gov](mailto:webconference@dot.gov)

## Questions?

- Please enter them in the Q&A box
- Please email project specific questions to [RAISEgrants@dot.gov](mailto:RAISEgrants@dot.gov)

## More Information

- This webinar is being recorded and will be posted on the RAISE Grants website: <https://www.transportation.gov/RAISEgrants>



# RAISE Team Introductions



Andrea Jacobson



Linsey Callaghan



Kim Bathrick



Logan Dredske



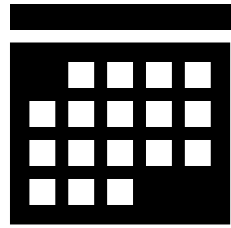
Jennifer Berkich



Tony Mattingly



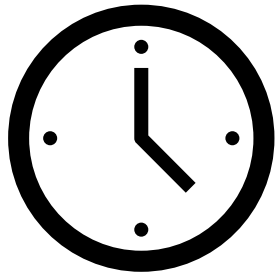
## FY 2025 RAISE NOFO – Round 2



Notice of Funding Opportunity is **OPEN**

**Grants.gov Opportunity Number:** [DTOS59-25-RA-RAISE](#)

**Assistance Listing:** 20.933



**APPLY** by **January 30, 2025**, at 11:59 pm Eastern

[Submit on grants.gov](#)

**No late applications accepted**



Additional resources at [www.transportation.gov/raisegrants](http://www.transportation.gov/raisegrants)

[Subscribe](#) for email updates!



# Upcoming RAISE Webinars

1

- *Round 1 – FY 2024 Projects of Merit*
- *November 7, 2024*

2

- *Round 2 – How to Compete*
- *December 2, 2024*

3

- **Round 2 – RAISE Location Designations**
- **December 12, 2024**

4

- **How to Prepare A Benefit-Cost Analysis for RAISE Grants**
- **December 17, 2024**

5

- **Benefit-Cost Analysis Spreadsheet Template and Office Hours**
- **December 19, 2024**



**What are RAISE Location Designations?**



# RAISE Location Designations

RAISE location designations are:

- **Urban** or **Rural**
- **Area of Persistent Poverty** and/or **Historically Disadvantaged Community**

These location designations affect the Federal share limit, minimum award size, and funding distribution:

Location Designations	Cost Share Requirement	Minimum Request	Funding Restriction
<b>Urban</b>	Up to 80% Federal funding	Capital - \$5M Planning - none	50%
<b>Rural</b>	Up to 100% Federal funding	Capital - \$1M Planning - none	50%
<b>Area of Persistent Poverty (APP)</b>		-	At least 1%
<b>Historically Disadvantaged Community (HDC)</b>		-	





# Urban and Rural Definitions



## Urban

Census Urban Areas with  
Population Greater than  
200,000



## Rural

Census Urban Areas with  
Population Less than 200,000  
Outside a Census Urban Area

**Urban area boundaries and population are based on the 2020 Census**

- Not based on other geographic boundary (city, county, etc.)

Click [here](#) for a **display** of qualifying urban areas.



# APP and HDC Definitions

## Areas of Persistent Poverty (APP)

- Based on **Census Tract or County** level poverty data and includes all **US territories**.

## Historically Disadvantaged Communities (HDC)

- Based on **Census Tract** indicators determined by the Council on Environmental Quality (CEQ).
- Any Federally Recognized Tribe or Tribal entity, whether or not they have land.

Click [here](#) to view the full definitions for APP and HDC.

Click [here](#) for a **display** of APP and HDC areas.

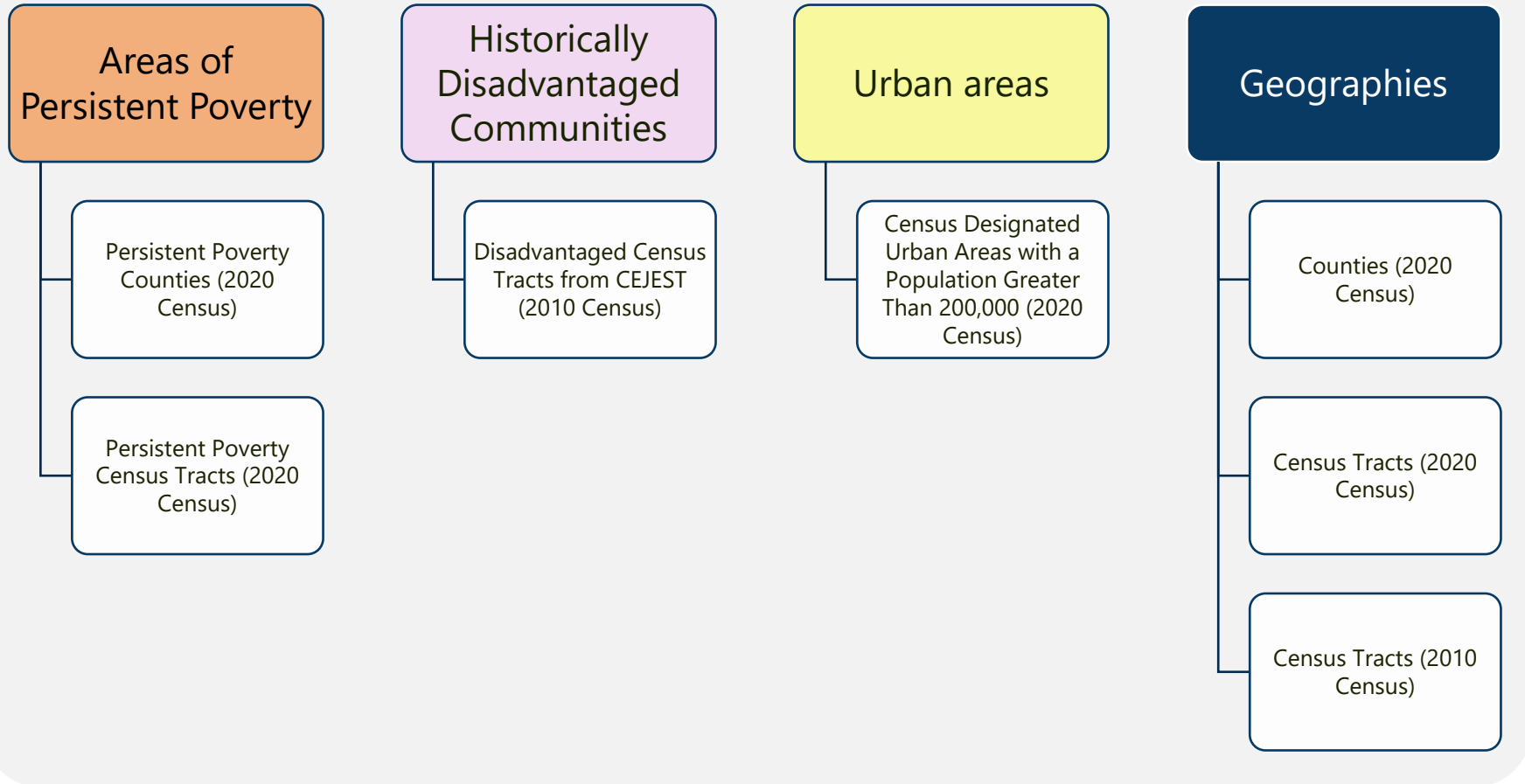
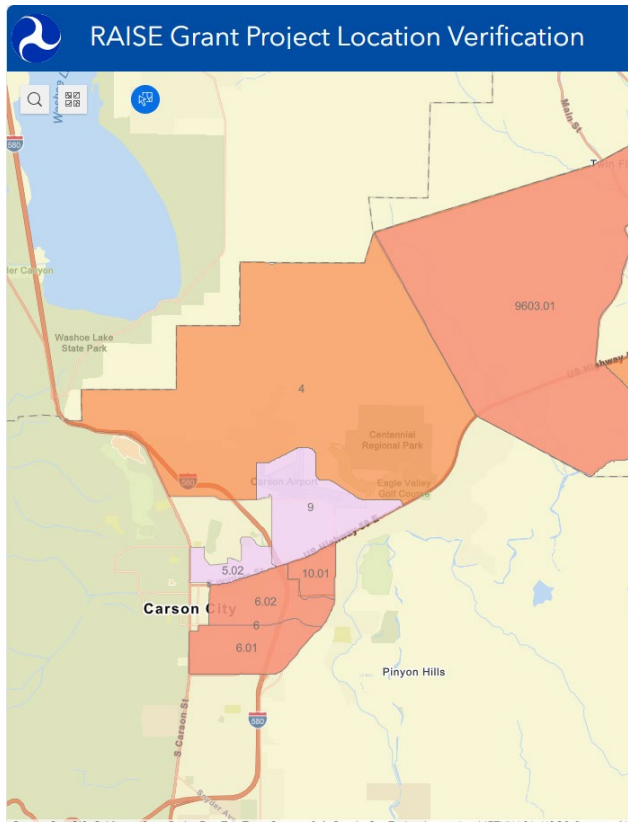


How do you determine the location designations for your project?



# RAISE Grant Project Location Verification Tool

An interactive map developed by the RAISE program to help you identify:



Link to tool: <https://experience.arcgis.com/experience/09642b69d90f4377856a6aef3e0bd2e9>



# RAISE Grant Project Location Verification Tool

RAISE Grant Project Location Verification

Example Project ★

Activate groups and layers by clicking the eye icon.

All elements are off by default. You will need to activate both the *group* and the *layer* to see the data.

Map Layers

- Areas of Persistent Poverty
- Persistent Poverty Census Tracts (2020 Census)
- Persistent Poverty Counties (2020 Census)
- Historically Disadvantaged Communities
- Urban Areas
- Census Tracts and Counties

Powered by Esri



# RAISE Grant Project Location Verification Tool

RAISE Grant Project Location Verification

Example Project ★

Carson City

Map Layers

- Carson County
- Census Tracts (2020 Census)
- Persistent Poverty Counties (2020 Census)
- Historically Disadvantaged Communities
- Disadvantaged Census Tracts from CEJST (2010 Census)

The legend is located within the Map Layers interface. Select the icon to the left of the three dots

Carson City GIS, California State Parks, Esri, TomTom, Garmin, SafeGraph, GeoTechnologies, Inc, METI/NASA, USGS, Bureau of Land Management, EPA, NPS, US Census Bureau, USDA, USFWS

Powered by Esri



# RAISE Grant Project Location Verification Tool

RAISE Grant Project Location Verification

Disadvantaged Census Tracts from CEJST (2010 Census)

Zoom to

Name 5.02

Example Project

Click on the layer on the map to see more information. (It will highlight and change color.)

Map Layers

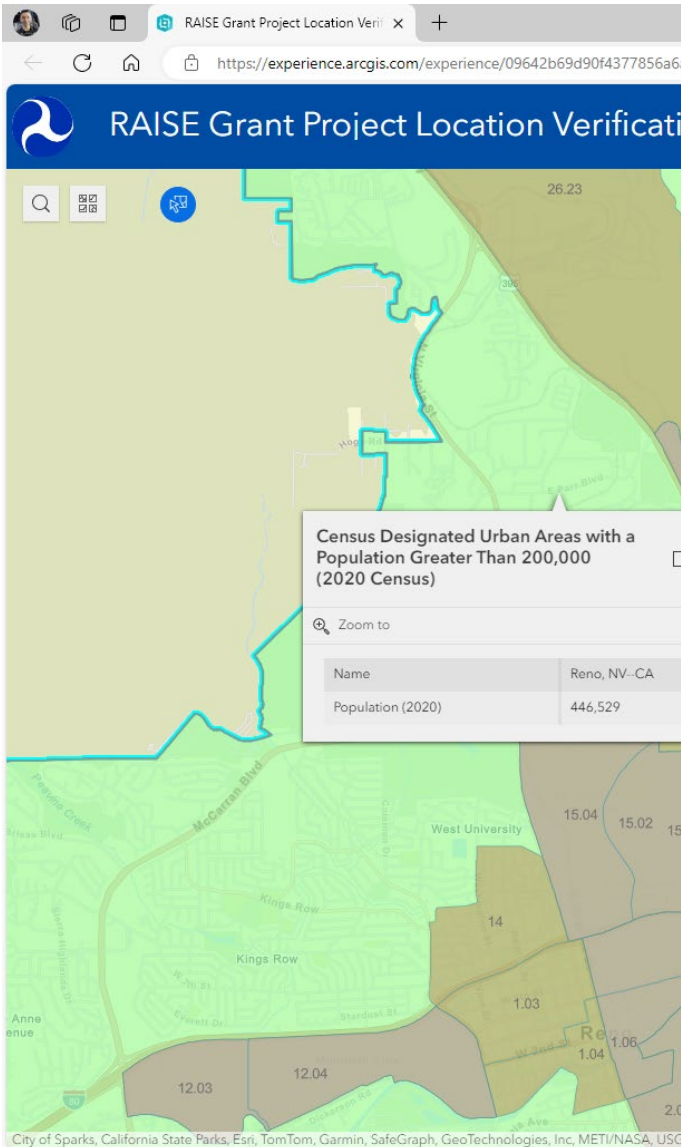
- Persistent Poverty Counties (2020 Census)
- Historically Disadvantaged Communities
- Disadvantaged Census Tracts from CEJST (2010 Census)

Esri Community Maps Contributors, Carson City GIS, California State Parks, © OpenStreetMap, Microsoft, Esri, TomTom, Garmin, SafeGraph, GeoTechnologies, Inc, METI/NASA, USGS, Bureau of Land Management, EPA, NPS, US Census Bureau, USDA, USFWS

Powered by Esri

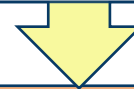


# Recommended Process for Determining Location Designations



**Step 1:** Verify if your project is in an **Urban** area using this layer:

**Census Designated Urban Areas with a Population Greater Than 200,000 (2020 Census)**



**Step 2:** Verify if your project is in an **Area of Persistent Poverty** using these layers:

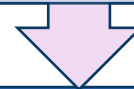
**Persistent Poverty Census Tracts (2020 Census)**

**Persistent Poverty Counties (2020 Census)**



**Step 3:** Verify if your project is in a **Historically Disadvantaged Community** using these layers:

**Disadvantaged Census Tracts from CEJST (2010 Census)**



**Step 4:** Verify the **county(ies)** your project is in using this layer:

**Counties (2020 Census)**



**Step 5:** Verify the **census tract(s)** your project is in using these layers:

**Census Tracts (2020 Census)**

**Census Tracts (2010 Census)**





What if your project crosses multiple designations?



# What if your project crosses multiple designations?

Projects that cross **multiple areas with differing designations** (urban and rural, APP and non-APP, or HDC and non-HDC) will have their **designation based on where the majority of costs are incurred.**

The *Project Budget* file should include these **tables**:

2020 Census Tract(s)	Project Costs per Census Tract
[XX.XX]	\$
[XX.XX]	\$
[XX.XX]	\$
[XX.XX]	\$
	Total Project Cost: \$

*Note: Please reference the Census Tracts (2020 Census) layer in the [RAISE Grant Project Location Verification](#) mapping tool. Additional rows may be added if necessary.*

2010 Census Tract(s)	Project Costs per Census Tract
[XX.XX]	\$
[XX.XX]	\$
[XX.XX]	\$
[XX.XX]	\$
	Total Project Cost: \$

*Note: Please reference the Census Tracts (2010 Census) layer in the [RAISE Grant Project Location Verification](#) mapping tool. Additional rows may be added if necessary.*

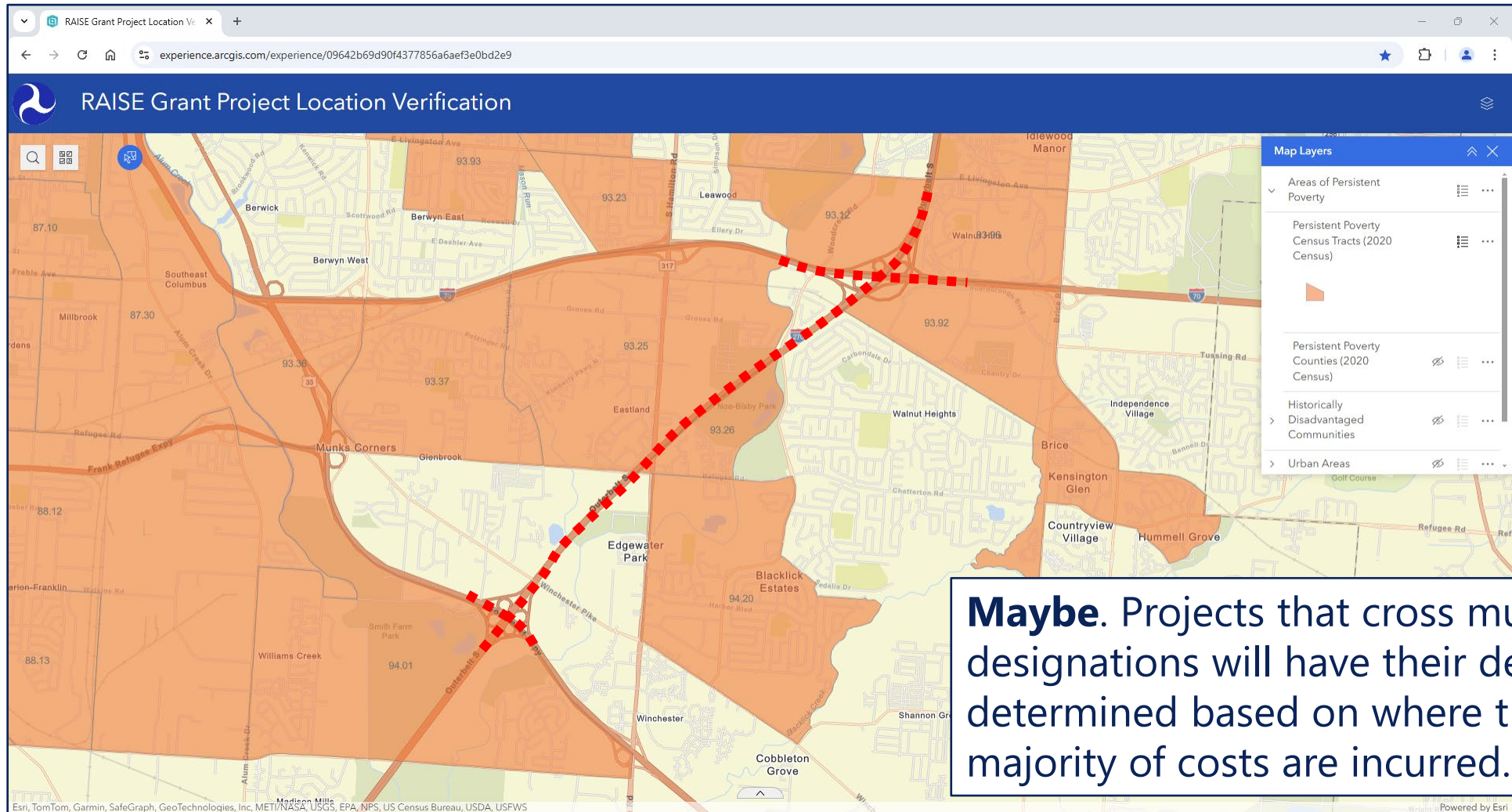
Urban and Rural	Project Costs
Urban (2020 Census-designated urban area with a population greater than 200,000)	\$
Rural (Located outside of a 2020 Census-designated urban area with a population greater than 200,000)	\$
	Total Project Cost: \$

*Note: Please reference the Census Designated Urban Areas with Population Greater Than 200,000 (2020 Census) layer in the [RAISE Grant Project Location Verification](#) mapping tool.*



# Location Designation Examples

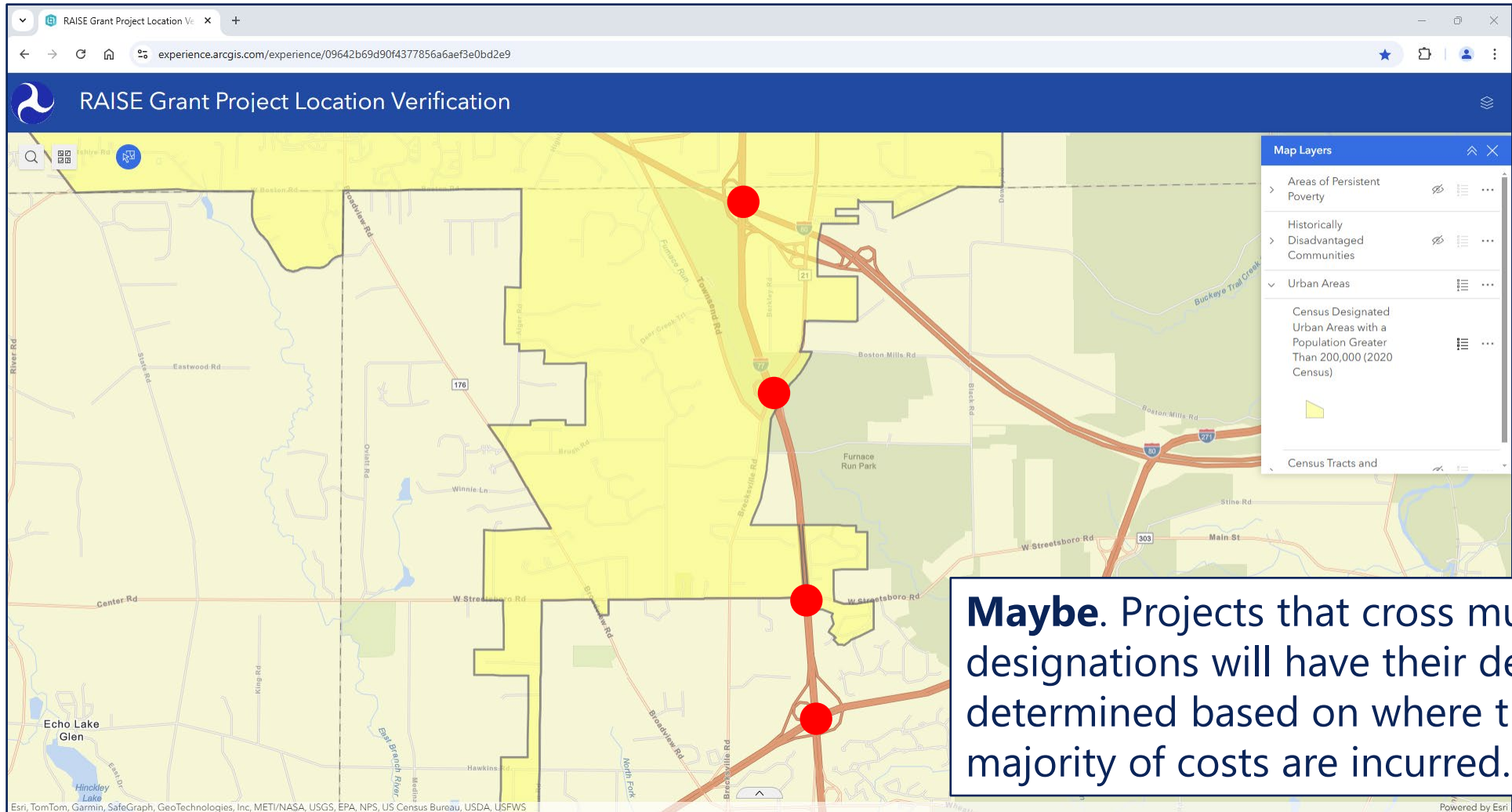
**Example #1:** Would this project (red dashed line) receive an APP designation?





# Location Designation Examples

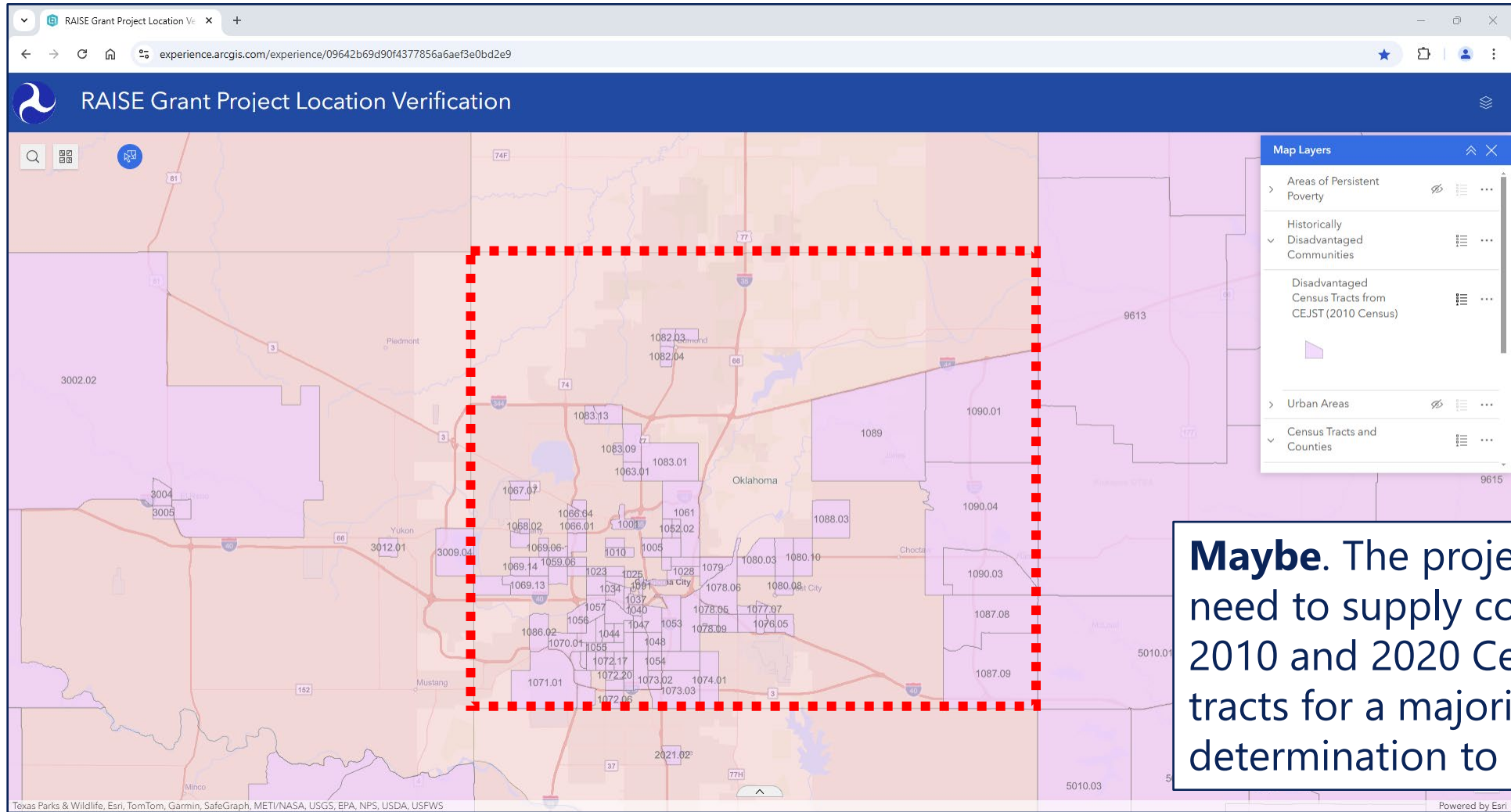
**Example #2:** Would this project (red dots) receive an Urban designation?





# Location Designation Examples

**Example #3:** Would this county-wide planning project (red dashed line) receive an HDC designation?





# Location Designation Examples

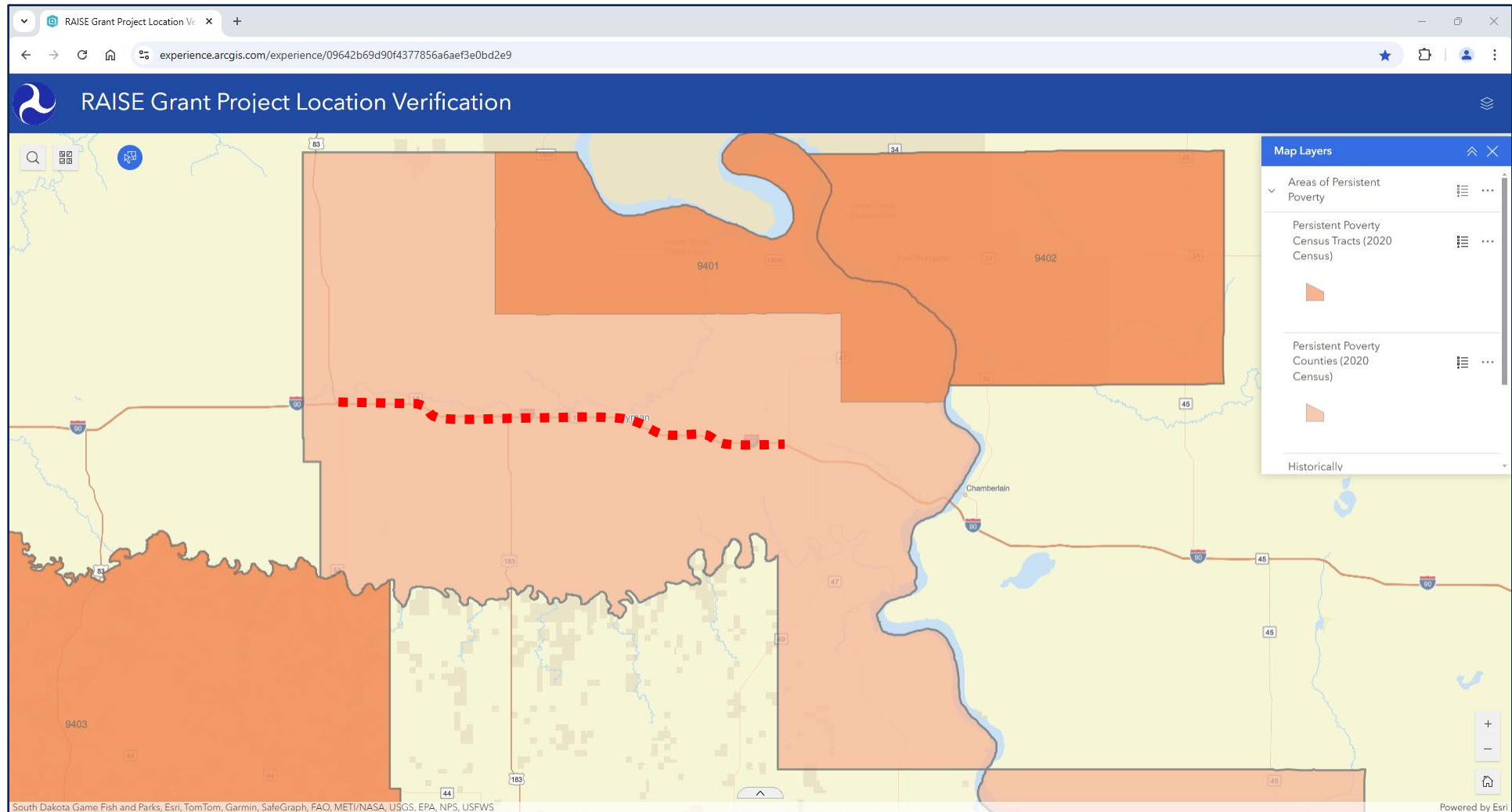
**Example #4:** Would this project (red dashed line) receive an APP designation?





# Location Designation Examples

## Example #4





# Location Designation Examples

**Example #5:** Would this project (red dashed line) receive an Urban designation?

RAISE Grant Project Location Verification

Map Layers

- Poverty
- Historically Disadvantaged Communities
- Urban Areas
  - Census Designated Urban Areas with a Population Greater Than 200,000 (2020 Census)
- Census Tracts and Counties

**No.** Double check projects that are on bridges and adjacent to bodies of water. Those areas may be excluded from adjacent designations.

Esri Community Maps Contributors, Miami-Dade County, FDEP, Esri, TomTom, Garmin, SafeGraph, GeoTechnologies, Inc, METI/NASA, USGS, EPA, NPS, US Census Bureau, USDA, USEWS

Powered by Esri





# How to Prepare a Spatial File to Submit with your Application



## Preparing a Spatial File to Submit with your Application

- Applicants **must** submit one of the following spatial files that displays their project's location:
  - Shapefile (compressed to a .zip file containing at least the .shp, .shx, .dbf, and .prj components of the Shapefile); OR
  - a KML or KMZ file
- **Spatial files should include only the direct physical location of the project, and not a broad service area or area of impact.**





# Preparing a Spatial File to Submit with your Application

**Example:** Use Google Earth (<https://earth.google.com/web/>), an open-source software

**Step 1)** Open Google Earth.

**Step 2)** Click **New** then select **New Local KML file**. This will take you to the map where you will create your spatial file.

The screenshot shows the Google Earth web interface. The browser address bar displays the URL: [https://earth.google.com/web/@40.91890113,-73.89767489,25.1554436a,1201.76677803d,30.00020622y,356.94029168h,0t,0r/data=CgRCAGgBQgIIAUoNCP\\_\\_\\_\\_\\_wEQAA](https://earth.google.com/web/@40.91890113,-73.89767489,25.1554436a,1201.76677803d,30.00020622y,356.94029168h,0t,0r/data=CgRCAGgBQgIIAUoNCP_____wEQAA). The main content area features a 'Start exploring' banner with the text 'Google Earth provides the latest data and imagery for compelling maps and stories' and buttons for 'Create a new project' and 'Import file to project'. A notification bubble says 'See cities, landmarks, and natural wonders in 3D, without having to create a project.' with a 'Dismiss' button. On the left, the 'New' menu is open, showing options for 'New project' (Ctrl+J), 'Import file to project' (New), 'Open My Maps from Drive', 'New local KML file' (Ctrl+K), and 'Open local KML file' (Ctrl+I). The 'Projects' panel on the right shows a table of projects:

Name	Last modified ↑
Example Project Area	Aug 21, 2024
Radford Street Improvements	Nov 21, 2024
Untitled project	9:22 AM
Untitled project	9:24 AM

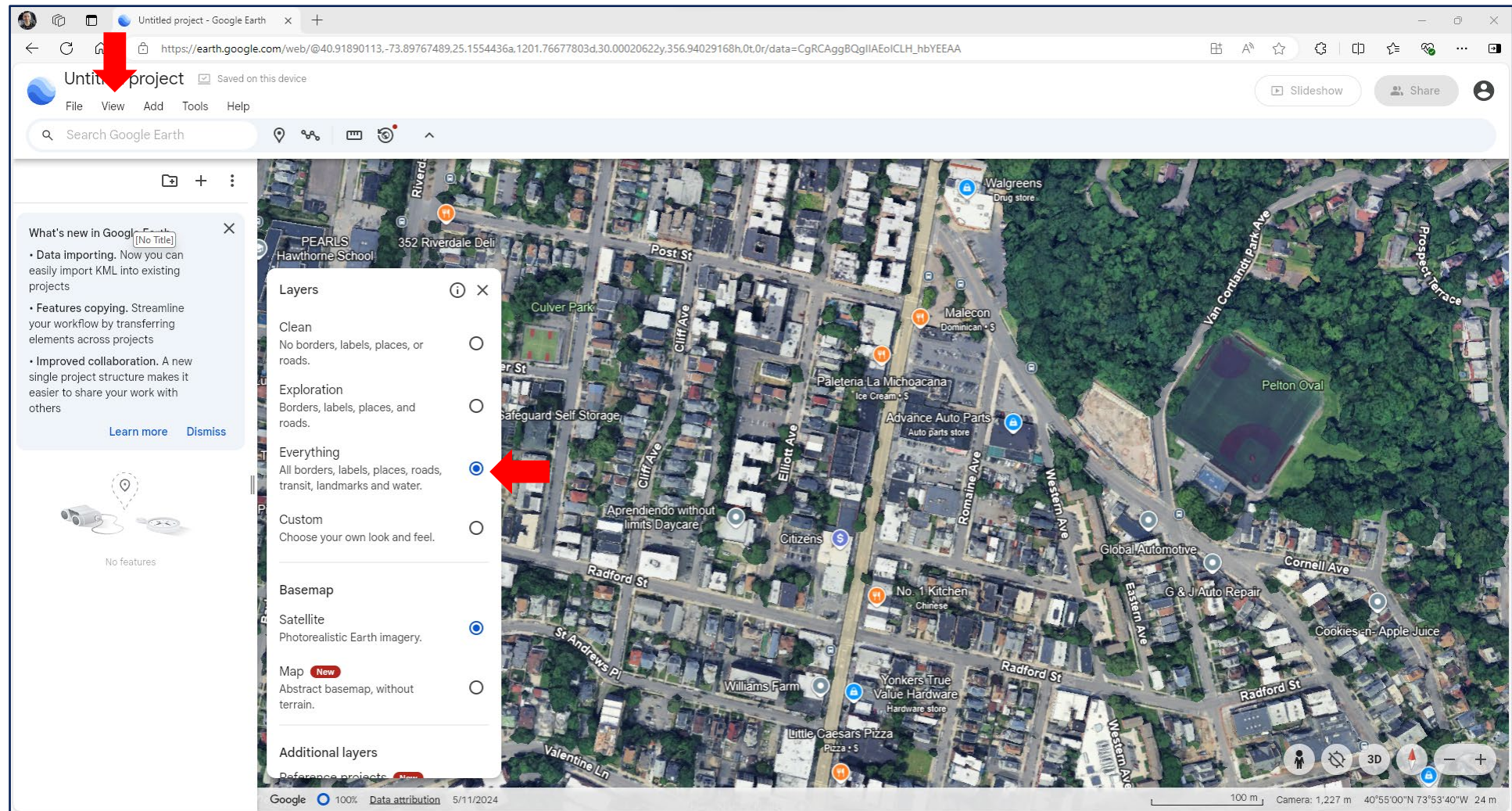


# Preparing a Spatial File to Submit with your Application

**Example:** Use Google Earth (<https://earth.google.com/web/>), an open-source software

**Step 3)** Click **View** then select **Layers**. This will open a menu that allows you to select which layers the map displays.

**Step 4)** Select **Everything** if it was not selected by default.





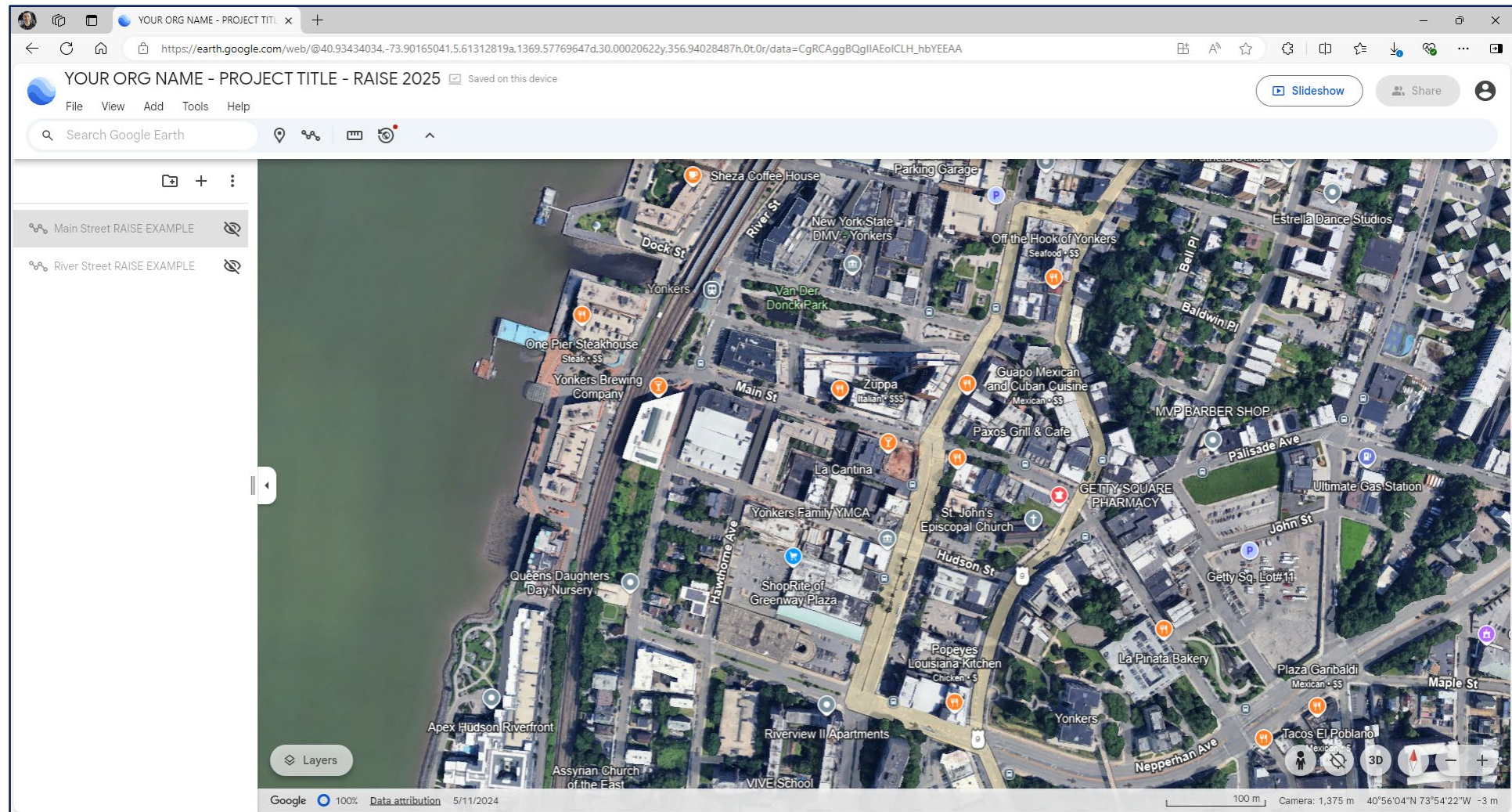
# Preparing a Spatial File to Submit with your Application

**Example:** Use Google Earth (<https://earth.google.com/web/>), an open-source software

**Step 5)** Name your project using this format: Your OrganizationName\_Your ProjectTitle\_RAISE2025

**Step 6)** Navigate to the project area by:

- Zooming in with your mouse, or
- Using the search bar in the top left.

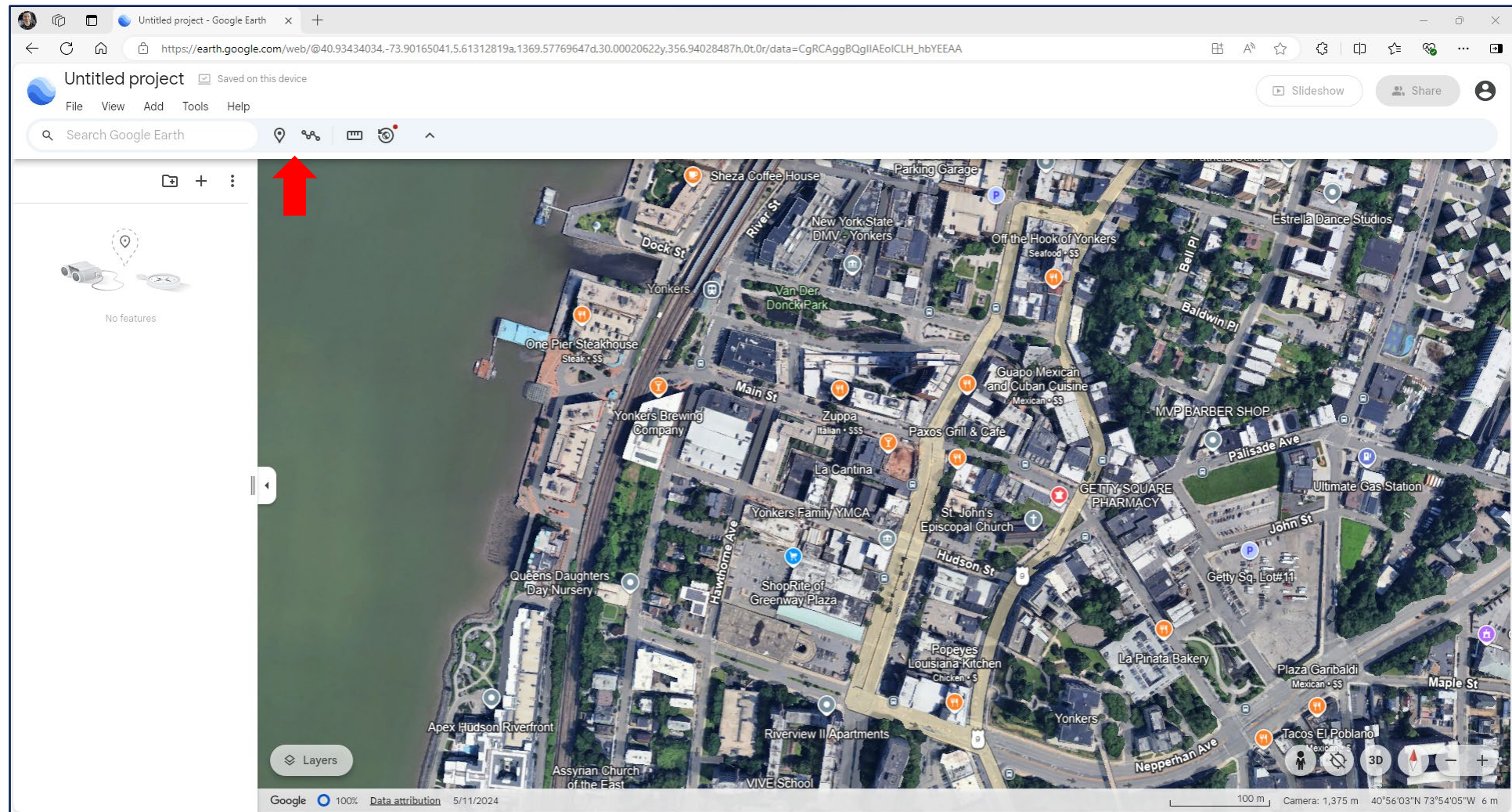




# Preparing a Spatial File to Submit with your Application

**Example:** Use Google Earth (<https://earth.google.com/web/>), an open-source software

**Step 7)** With your project area on screen, use either the **add path or polygon** or the **add a placemark** tools to indicate the extent of your project by clicking on the map.



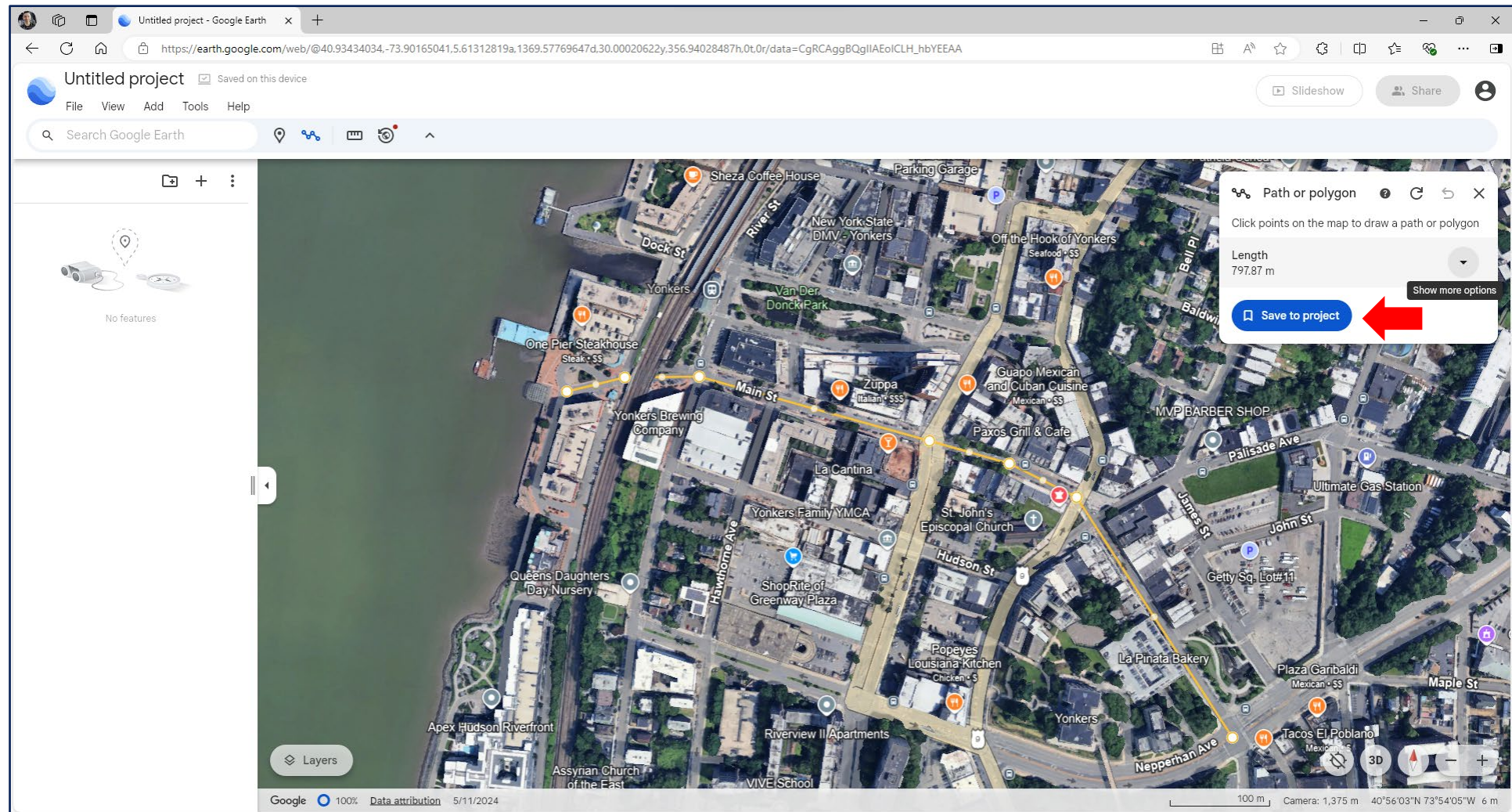


# Preparing a Spatial File to Submit with your Application

**Example:** Use Google Earth (<https://earth.google.com/web/>), an open-source software

**Step 8)** Click “**Save to Project**” in the popup to the upper right.

**Step 9)** Name your Path or Placemark.



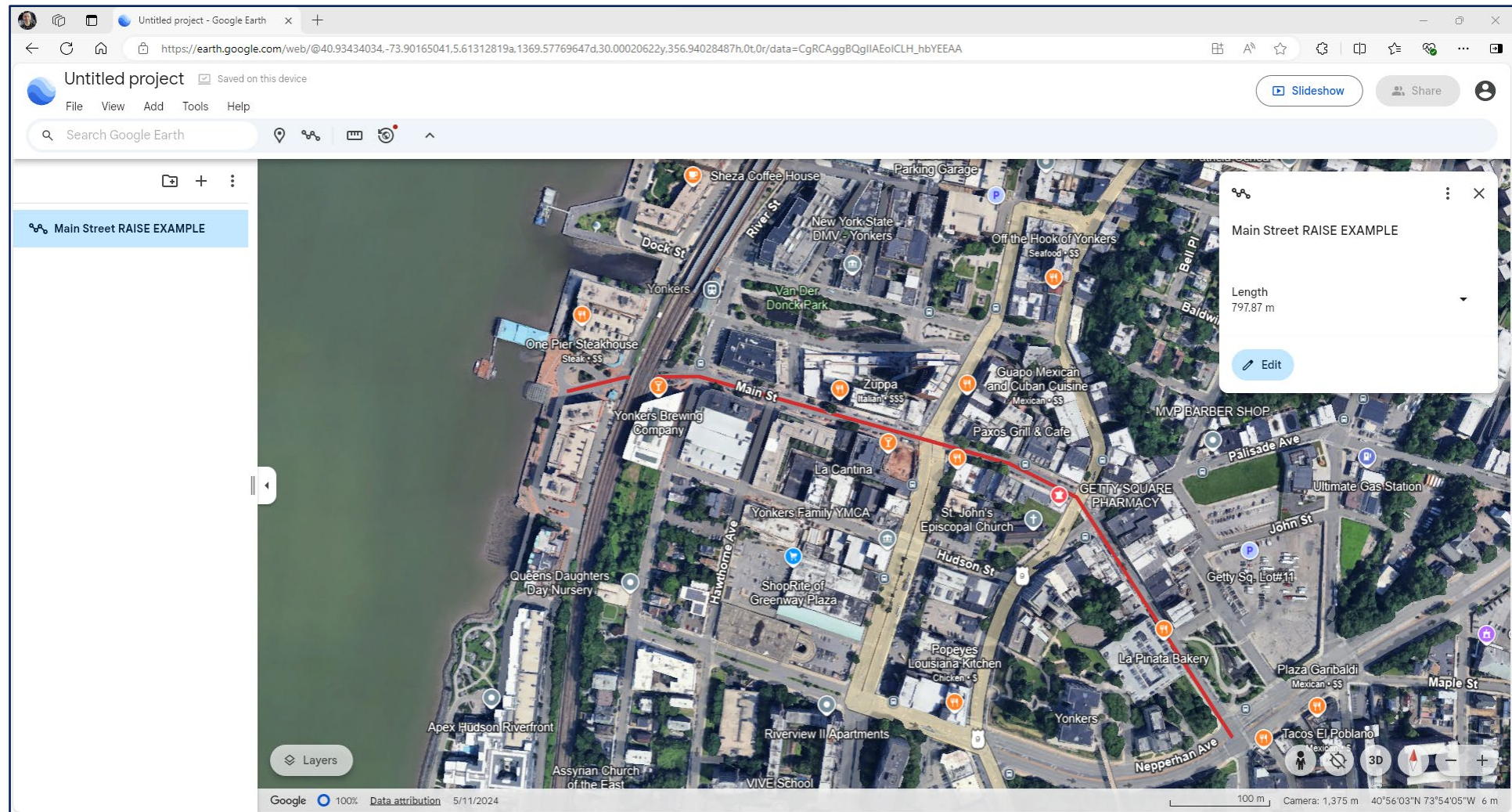


# Preparing a Spatial File to Submit with your Application

**Example:** Use Google Earth (<https://earth.google.com/web/>), an open-source software

**Step 10)** The new feature will be added to the layers on the left.

You may edit the feature again, if needed, using the 3 dots to the right of the feature's name.







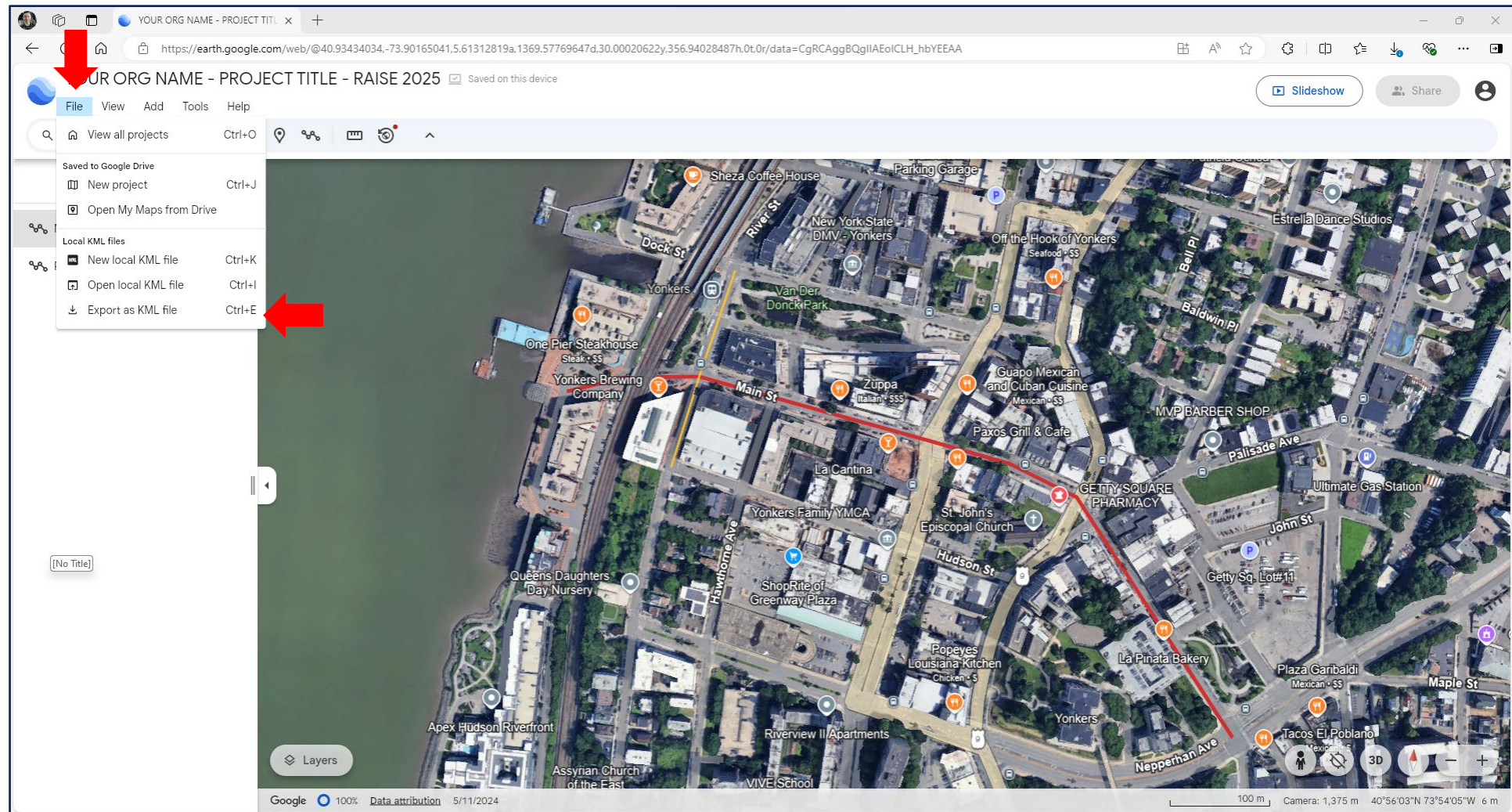
# Preparing a Spatial File to Submit with your Application

**Example:** Use Google Earth (<https://earth.google.com/web/>), an open-source software

**Step 11)** Ensure you have drawn all features to accurately display your project limits.

**Step 12)** Click “File” at the top of the page, then “Export as KML File”

Your entire project will now be saved to your downloads folder as a KML file.





Please type your questions in the **Q&A box**



- Email future questions to us at [raisegrants@dot.gov](mailto:raisegrants@dot.gov)
- See the frequently asked questions on our [website](#) for more answers