

ON TRACK WITH

TRANSERVE

IRS Announces Increase in Transportation Benefit to \$325.00 for 2025

As of January 1, 2025, the maximum mass transit exclusion from income has been set by the Internal Revenue Service (IRS) at \$325. Relevant information on the transit benefit rules can be found on pages 12-13.

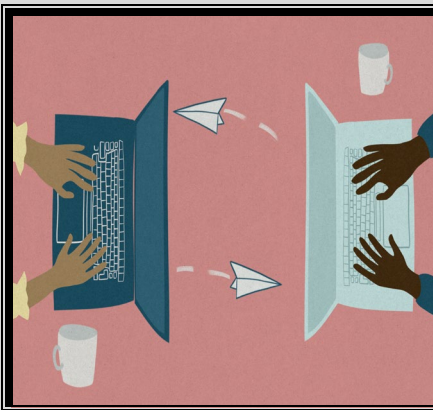
<https://www.irs.gov/pub/irs-drop/rp-24-40.pdf>

Please notify TRANServe of your agency's timeline for implementing the statutory limit increase and ensure participant's certified monthly commuting costs are current. If the January 2025 increase is authorized by your agency, TRANServe must be notified by **COB Monday December 2, 2024**.

New Agency Controls to Manage High Risk Applications

Agency designated program administrators are now able to use a new suspend application feature to prevent identified participants from applying or changing transit benefit applications. This feature is useful during investigations and audits and protects the transit benefit from participants who are not permitted to re-enroll in the program. Please note the suspend application feature will not prevent active participants from receiving their current benefit, and a withdraw request is still required to terminate benefits.

To learn more about the suspend application function, please reach out to your Transit Benefit Manager or TRANServe support for assistance or to answer any questions.



TRANServe is Celebrating the 18-year Anniversary of the online Electronic Application System

TRANServe's electronic application is fast, secure, and streamlined and is available 24/7. TRANServe's web application eliminates the burden of paper applications, accommodates multiple approver levels, and most importantly allows for participants to self-serve. Please let us know if your agency is interested and we will work with you to make the conversion.



Customer Spotlight

We are excited to welcome Bureau of Labor Statistics (BLS) & Federal Mine Safety Health & Review Commission (FMSHRC) to TRANServe!

Welcome back Department of Energy - National Nuclear Security Administration (NNSA), New Mexico.

NATIONAL CAPITAL REGION

WMATA (Metro) to close downtown stations in December. Downtown Blue, Orange and Silver lines will be closed for 11 days beginning December 20-30, while WMATA works on tracks, signaling and more. For more information, please visit: <https://www.wmata.com/service/Track-Work.cfm>

AROUND THE REGION

BART CA

BART fare increases 5.5% in 2025.

For more information, please visit: [On Jan. 1, BART fares to increase 5.5%, low-income fare discount to increase to 50% | Bay Area Rapid Transit](#)

MARTA GA

Gold Line trains will not stop at Brookhaven Station from Oct. 7th to November 15th during platform renovations. Shuttle Bus service will run from Brookhaven to Lenox (northbound) and Chamblee (southbound). Please allow an extra 15 minutes for your trip. Local bus routes are unchanged.

MTA NY

MTA NY fare increases 4% in 2025 from \$2.90 to \$3.00.

Major renovation and upgraded underway for LIRR Babylon Station

For more information, please visit: [MTA: No additional fare hikes expected for now \(ny1.com\)](#)



Did you know...

- People board public transportation 34 million times each weekday. ([Public Transportation](#))
- Public transportation is a \$79 billion industry that employs more than 430,000 people. ([Home - American Public Transportation Association](#))
- There are approximately 6,800 organizations that provide public transportation in the United States. ([America's Infrastructure Report Card 2021](#))
- 45% of Americans have no access to public transportation. ([Home - American Public Transportation Association](#))