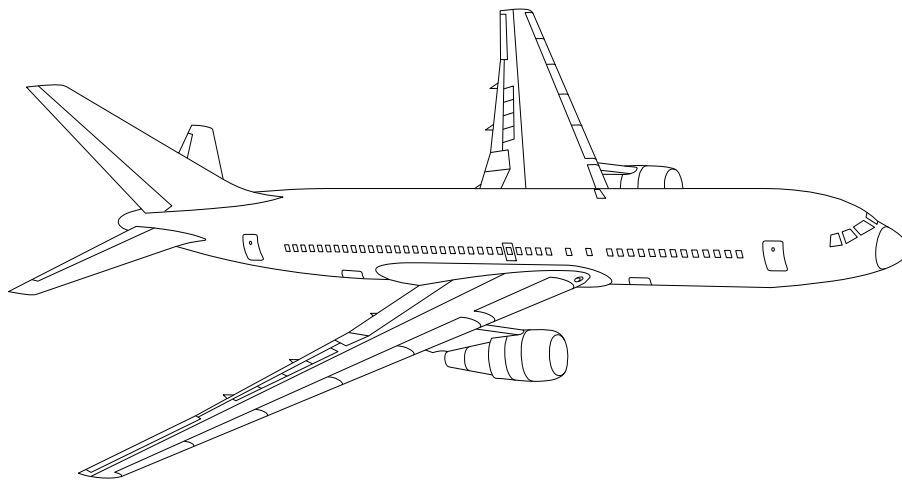


# **AIRLINE QUARTERLY FINANCIAL REVIEW**

FIRST QUARTER 2024

PASSENGER NATIONALS



**DEPARTMENT OF TRANSPORTATION  
OFFICE OF AVIATION ANALYSIS:  
COMPETITION AND POLICY ANALYSIS  
DIVISION**

Table of Contents

INTRODUCTION.....	2
SYSTEM PASSENGER NATIONALS .....	3
Chart 1.    Operating Profit and Net Income (Loss) for the Quarter .....	4
Chart 2.    Operating Profit and Net Income (Loss) for the Year Ended .....	4
Chart 3.    Operating Profit (Loss) by Quarter .....	5
Chart 4.    Net Income (Loss) by Quarter .....	5
Chart 5.    Operating Profit (Loss) Year Ended by Quarter .....	6
Chart 6.    Net Income (Loss) Year Ended by Quarter .....	6
Chart 7.    Operating Revenue per Revenue Ton-Mile, Year over Year Percent Change .....	7
Chart 8.    Ton Load Factor Year over Year Point Change.....	7
Chart 9.    Operating Expense per Revenue Ton-Mile, Year over Year Percent Change .....	8
Chart 10.   Operating Expense per Available Ton-Mile, Year over Year Percent Change .....	8
Chart 11.   Passenger Revenue per Revenue Passenger-Mile, Year over Year Percent Change.....	9
Chart 12.   Revenue Passenger-Miles (Scheduled Service), Year over Year Percent Change .....	9
Chart 13.   Available Seat-Miles (Scheduled Passenger Service), Year over Year Percent Change.....	10
Chart 14.   Passenger Load Factor, Year over Year Point Change .....	10
Chart 15.   Passenger (RPM) Yield for the Quarter .....	11
Chart 16.   Passenger Load Factor for the Quarter .....	11
Air Wisconsin Airlines Corp (ZW) .....	12
Breeze Aviation (MX) .....	13
Commutair Inc. (C5).....	14
Endeavor Air Inc. (9E) .....	15
GoJet Airlines LLC d/b/a United Express (G7) .....	16
Horizon Air (QX).....	17
Mesa Airlines Inc. (YV) .....	18
Piedmont Airlines (PT) .....	19
PSA Airlines Inc. (OH).....	20
Silver Airway (3M) .....	21
Sun Country Airlines (SY) .....	22
TEM Enterprises - Avelo Airlines (XP).....	23
Comparison of Operating Profit (Loss) for Individual System Nationals.....	24
Comparison of Net Income (Loss) for Individual System Passenger Nationals.....	25
Comparison of Passenger Load Factors for Individual System Passenger Nationals .....	26
Comparison of Passenger Yields (Cents) for Individual System Passenger Nationals .....	27
Comparison of Operating Profit Margin (Percent) for Individual System Passenger Nationals .....	28
Comparison of Debt-to-Investment and Total Debt for Individual System Passenger Nationals .....	29
Endnotes .....	30
Carrier List.....	31
Explanation of Line Items.....	32

## INTRODUCTION

INTRODUCTION: This report contains tables and charts on the financial condition of the U.S. Passenger National airlines. All data presented in this financial and traffic review are derived from data reported to the U.S. Department of Transportation on Form 41 Schedules by Large Certificated Air Carriers.

The data are presented on both a carrier group and an individual carrier basis, but the primary focus is on individual carrier system entity performance. Data are presented for the most recent quarterly period compared to the prior year's quarter, and 12-month ended data of the five most recent quarters compared to the same period one year prior. A graphic presentation of comparative trends, on a carrier group basis, is made for several unit and overall financial indicators.

Considerations when viewing the reports:

In the case of merged carriers, data for the carriers involved have been combined and presented under the name of the surviving carrier so that meaningful (proforma) comparisons can be made. See endnotes for further information regarding timing of mergers.

In some instances, a metric in the individual carrier report will show a symbol. Please see the endnotes for a glossary of symbols.

While the Office of Aviation Analysis has reviewed the reports for obvious errors, the data are presented as reported by the carriers to the Bureau of Transportation Statistics and have not been verified or compared to publicly filed financial documents.

Carriers can move between groupings (Majors and Nationals) based on the criteria listed below. In the instance where a carrier falls into both groupings during the time periods of a report, a carrier will appear under both groupings. Data from the Majors report and data from the Nationals report should not be combined without ensuring any duplications are removed.

### Carrier Group Definitions

**Majors:** Air carriers with annual operating revenues exceeding \$1,000,000,000

**Nationals:** Air carriers with annual operating revenues between \$100,000,000 and \$1,000,000,000

**Large Regionals:** Air carriers with operating revenues between \$20,000,000 and \$99,000,000

**Medium Regionals:** Carriers with annual operating revenues less than \$19,999,999 or that operate only aircraft with 60 seats or less (or 18,000 lbs maximum payload)

Certain data in this review are classified in two broad categories: namely "Domestic" and "International" services. "Domestic" encompasses operations within and between the 50 states of the United States, the District of Columbia, the Commonwealth of Puerto Rico, and the U.S. Virgin Islands. It also encompasses Canadian transborder operations and Mexican transborder operations. All other operations are considered "International" service, which includes operations in the Atlantic, Latin, and Pacific regions.

Suggestions from users for improving either the scope, presentation, or utility of this review are welcomed. Please feel free to make suggestions, provide discrepancy details or error information to the Competition and Policy Analysis Division, Office of Aviation Analysis, Office of the Secretary, U.S. Department of Transportation, 1200 New Jersey Avenue, SE, Washington, D.C. 20590.

# QUARTERLY FINANCIAL & TRAFFIC REVIEW

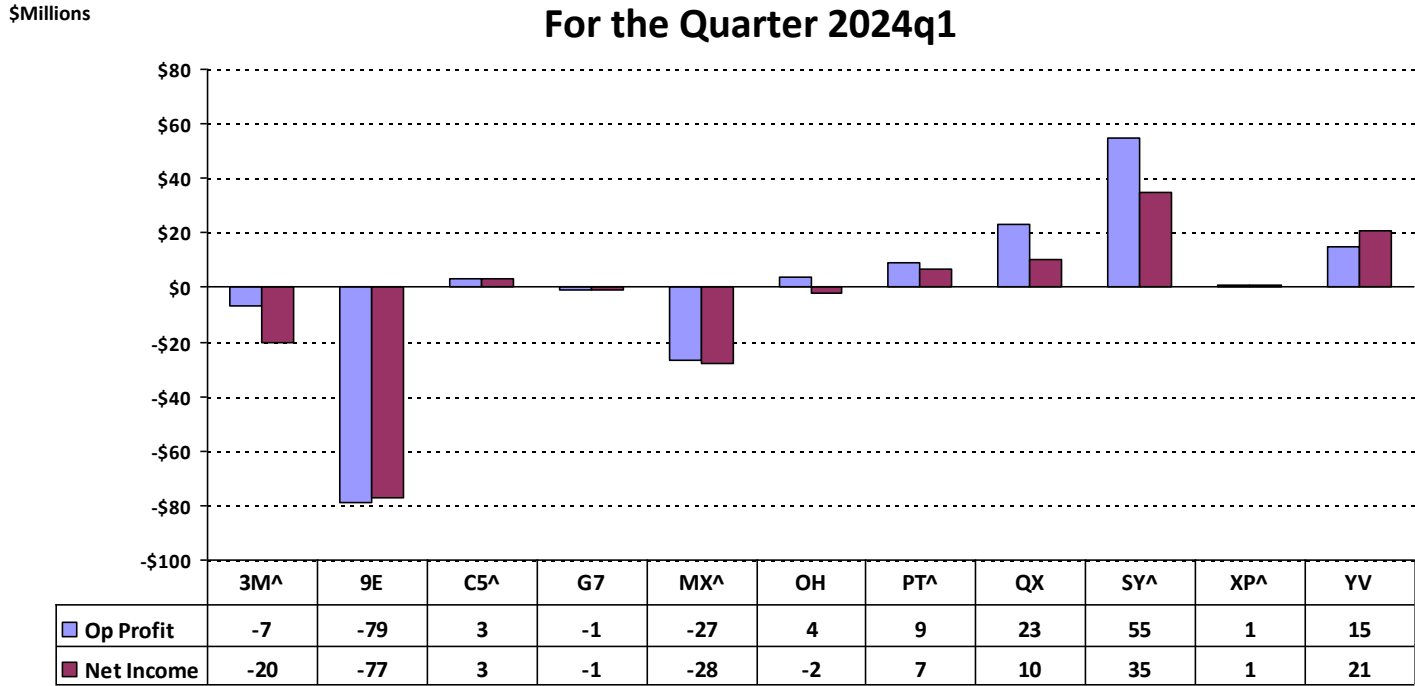
## SYSTEM OPERATIONS

### System Passenger Nationals

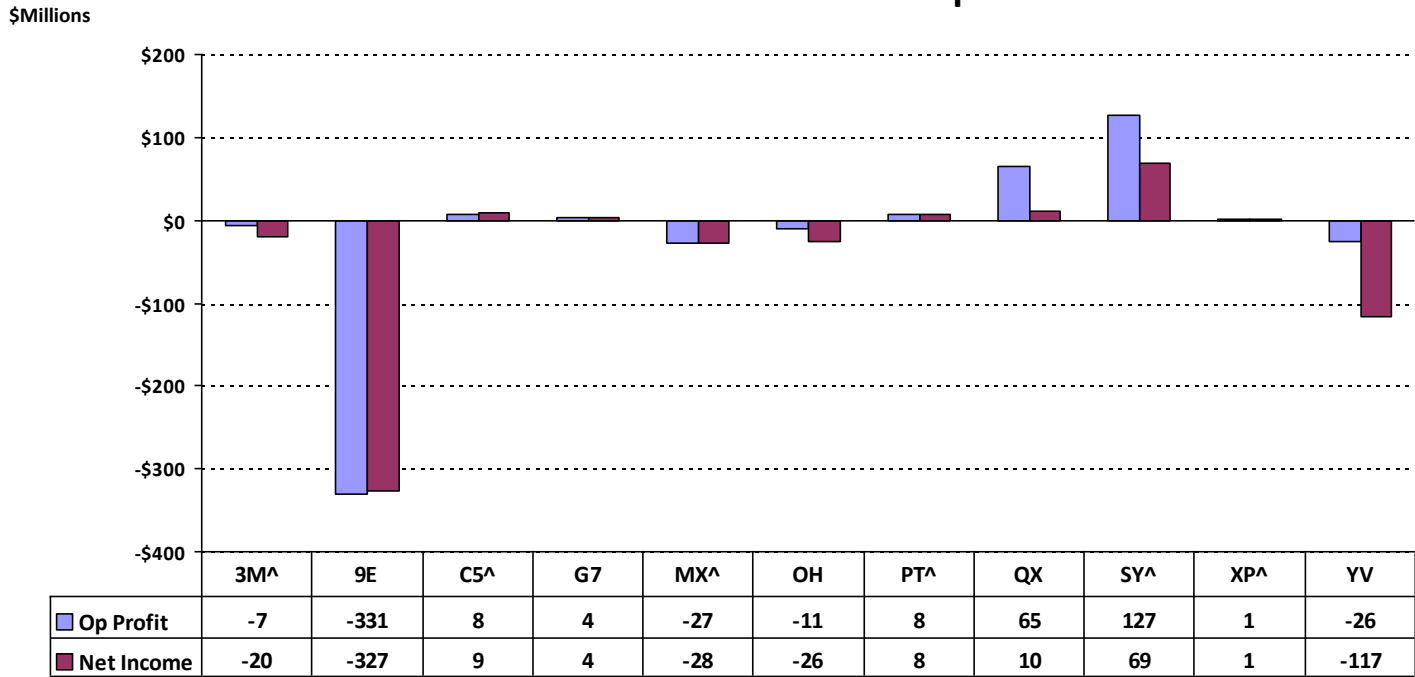
Items	Quarter Ended		12 Months Ended				
	2024 q1	2023 q1	2024 q1	2023 q4	2023 q3	2023 q2	2023 q1
<b>FINANCIAL RESULTS: (\$Millions)</b>							
1 Operating Revenues	1,521.7	1,250.5	5,129.5	4,858.3	4,875.4	4,876.0	4,851.1
2 Operating Expenses	1,526.1	1,298.8	5,339.0	5,111.7	5,165.1	5,171.3	5,142.3
3 Operating Profit (Loss)	-4.3	-48.4	-209.5	-253.5	-289.7	-295.2	-291.2
4 Net Income (Loss)	-50.7	-100.8	-432.0	-482.2	-443.2	-554.5	-513.6
<b>TRAFFIC: (Thousands)</b>							
5 RPMs - Scheduled Rev. Svc.	7,742.1	5,813.4	26,884.8	24,956.0	24,593.4	24,827.8	25,771.4
6 ASMs - Scheduled Rev. Svc.	9,589.5	7,257.2	32,260.1	29,927.8	29,582.1	29,947.2	31,046.6
7 Overall RTMs (All Svc.)	831.2	637.4	2,935.1	2,741.3	2,698.9	2,711.5	2,793.9
8 Overall ATMs (All Svc.)	1,386.5	1,099.9	4,837.2	4,550.6	4,488.1	4,502.1	4,597.5
<b>YIELD &amp; UNIT COST &amp; PROFITS: (Cents)</b>							
9 Operating Revenue per RTM	183.1	196.2	174.8	177.2	180.6	179.8	173.6
10 Operating Expense per RTM	183.6	203.8	181.9	186.5	191.4	190.7	184.1
11 Operating Profit (Loss) per RTM	-0.5	-7.6	-7.1	-9.2	-10.7	-10.9	-10.4
12 Operating Expense per ATM	110.1	118.1	110.4	112.3	115.1	114.9	111.9
13 Passenger Revenue per RPM	14.78	17.96	15.19	15.97	16.39	16.38	15.84
<b>FINANCIAL RATIOS:</b>							
14 Operating Revenues to Total Investment	*	*	1.66	1.67	1.72	1.73	1.74
15 Times Interest Earned	*	*	-1.35	-2.04	-2.20	-3.51	-3.85
16 Current Assets to Current Liabilities	*	*	0.71	0.79	0.78	0.86	0.79
17 No. of Days Cash Coverage of Cash Exp.	*	*	37.1	36.2	33.2	40.9	37.1
<b>FINANCIAL PERCENTAGES: (%)</b>							
18 Operating Profit (Loss) to Operating Revenue	-0.3	-3.9	-4.1	-5.2	-5.9	-6.1	-6.0
19 Net Income to Stockholders Equity	*	*	-53.42	-50.46	-45.43	-55.20	-50.92
20 Corporate Return on Investment	*	*	-8.4	-11.3	-10.7	-15.2	-14.5
21 Debt to Total Investment	*	*	92.3	74.4	68.7	64.9	64.0
<b>PASSENGER LOAD FACTOR: (Sch. Svc. %)</b>							
22 Actual	80.7	80.1	83.3	83.4	83.1	82.9	83.0
23 Breakeven	90.4	86.2	93.0	92.1	92.2	91.5	91.0
<b>Employment &amp; Productivity:</b>							
24 Employment, Total Weighted Avg CY	29,002	27,171	27,080	26,623	27,090	26,563	26,806
25 Overall RTM's per Employee (000)	28.7	23.5	108.4	103.0	99.6	102.1	104.2
<b>CHANGE OVER COMPARABLE PERIOD 12 MONTHS EARLIER</b>							
26 Operating Revenues (%)	21.7	8.4	5.7	2.2	3.0	7.2	12.5
27 Operating Expenses (%)	17.5	2.1	3.8	-0.1	2.1	4.7	8.0
28 Operating Profit (Loss) (in Millions \$)	44.0	70.3	81.7	108.0	32.2	97.4	158.1
29 Net Income (Loss) (in Millions \$)	50.1	69.1	81.5	100.5	88.9	-165.8	-271.2
30 RPMs (Sch. Svc.) (%)	33.2	-12.6	4.3	-6.2	-13.1	-17.1	-14.6
31 ASMs (Sch. Svc.) (%)	32.1	-18.2	3.9	-8.4	-15.5	-19.9	-19.0
32 Operating Revenues per RTM (%)	-6.7	20.2	0.7	6.7	15.5	25.9	28.8
33 Operating Expense per RTM (%)	-9.9	13.2	-1.2	4.4	14.6	22.9	23.6
34 Passenger Revenue per RPM (Sch. Svc.)(%)	-17.7	20.2	-4.1	5.4	15.1	26.0	29.1

# COMPARISONS AMONG PASSENGER NATIONALS GROUP AIRLINES SYSTEM ENTITY

## Chart 1. Operating Profit and Net Income (Loss) For the Quarter 2024q1

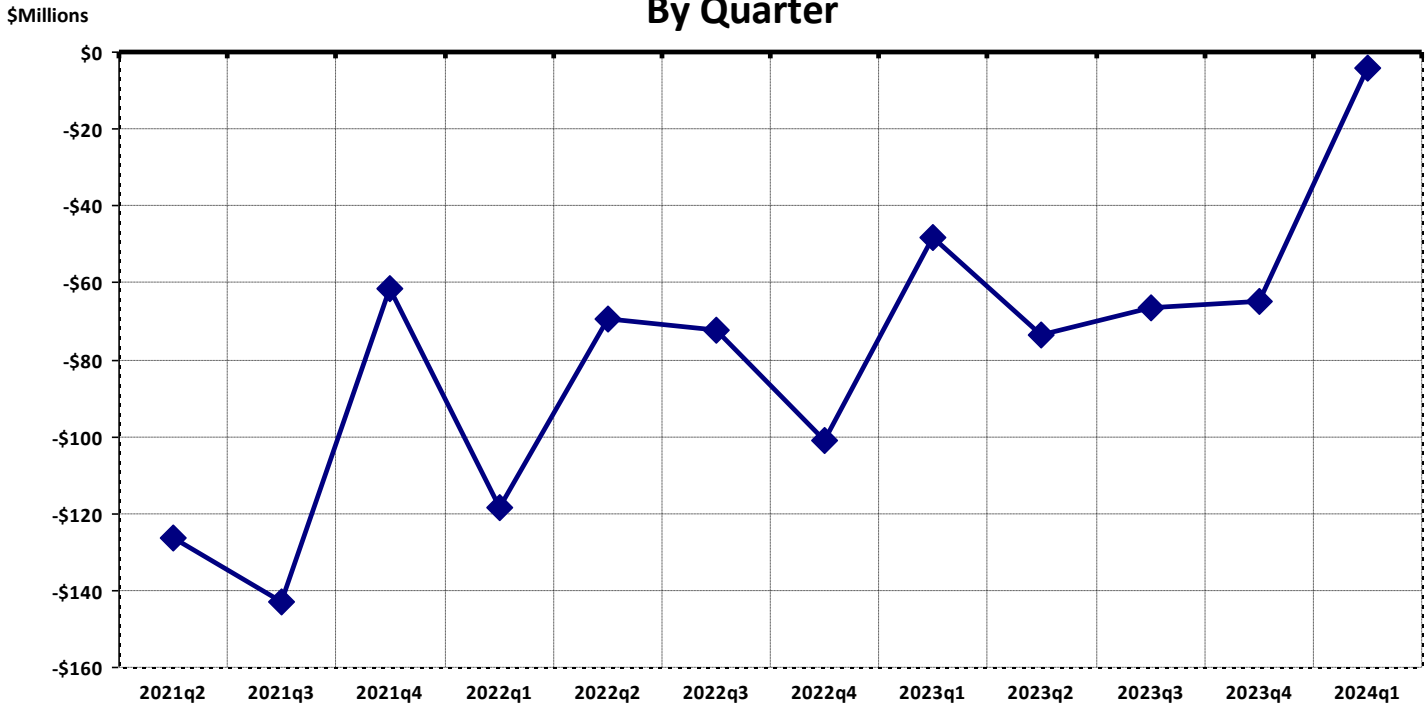


## Chart 2. Operating Profit and Net Income (Loss) For the Year Ended 2024q1

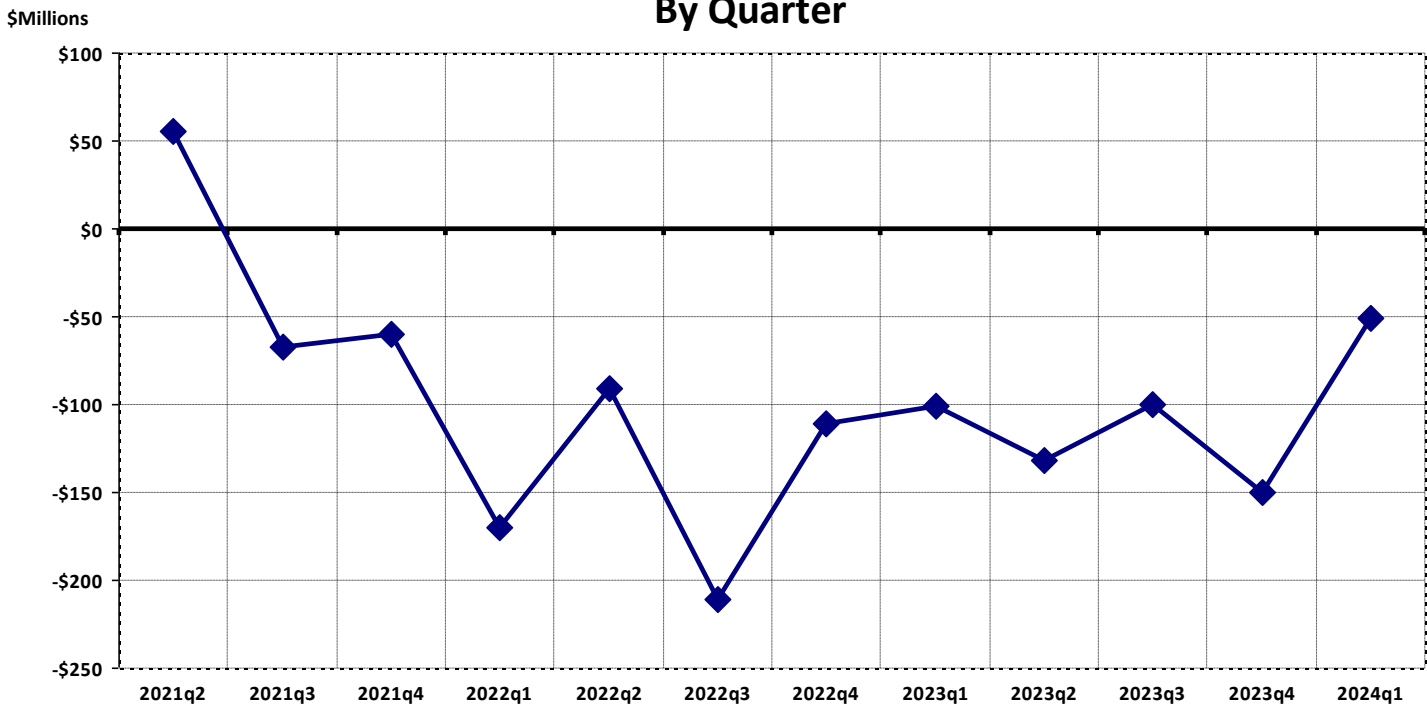


# TOTAL PASSENGER NATIONALS GROUP AIRLINES SYSTEM ENTITY

## Chart 3. Operating Profit (Loss) By Quarter

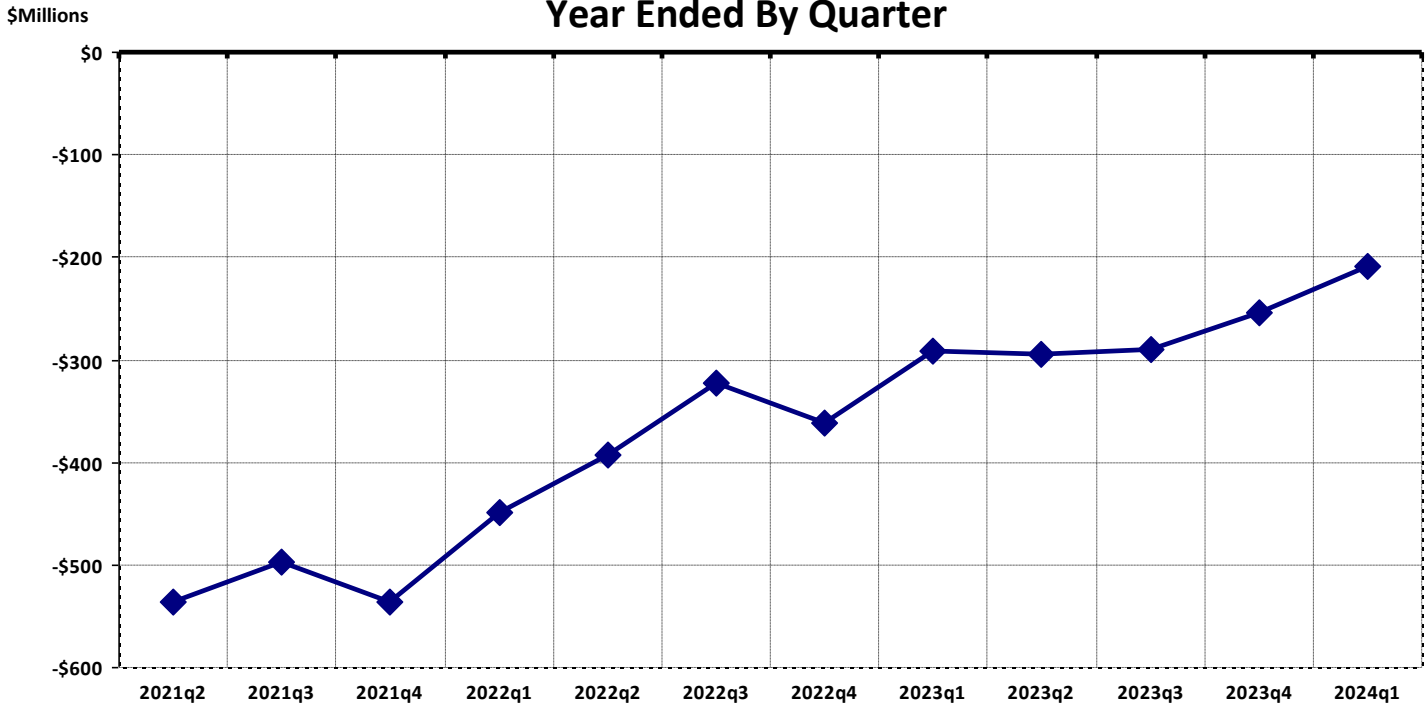


## Chart 4. Net Income (Loss) By Quarter

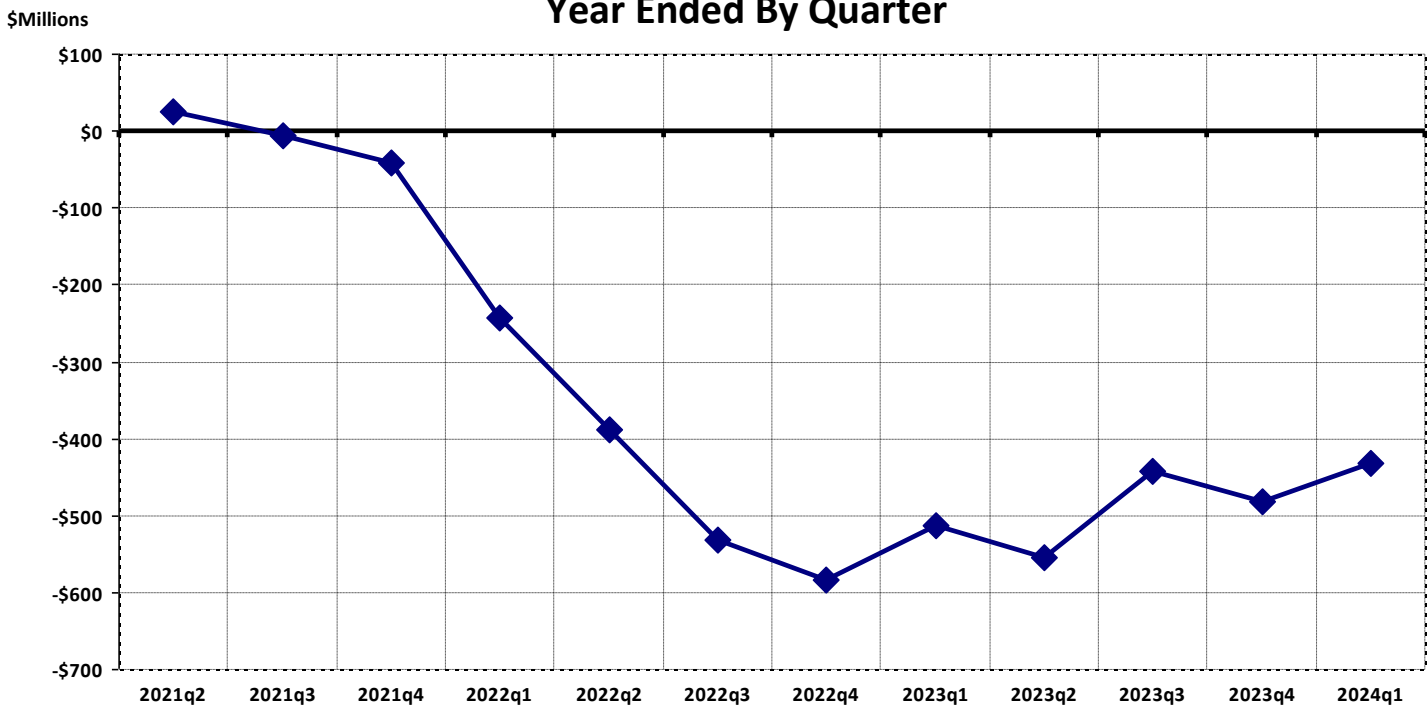


# TOTAL PASSENGER NATIONALS GROUP AIRLINES SYSTEM ENTITY

## Chart 5. Operating Profit (Loss) Year Ended By Quarter



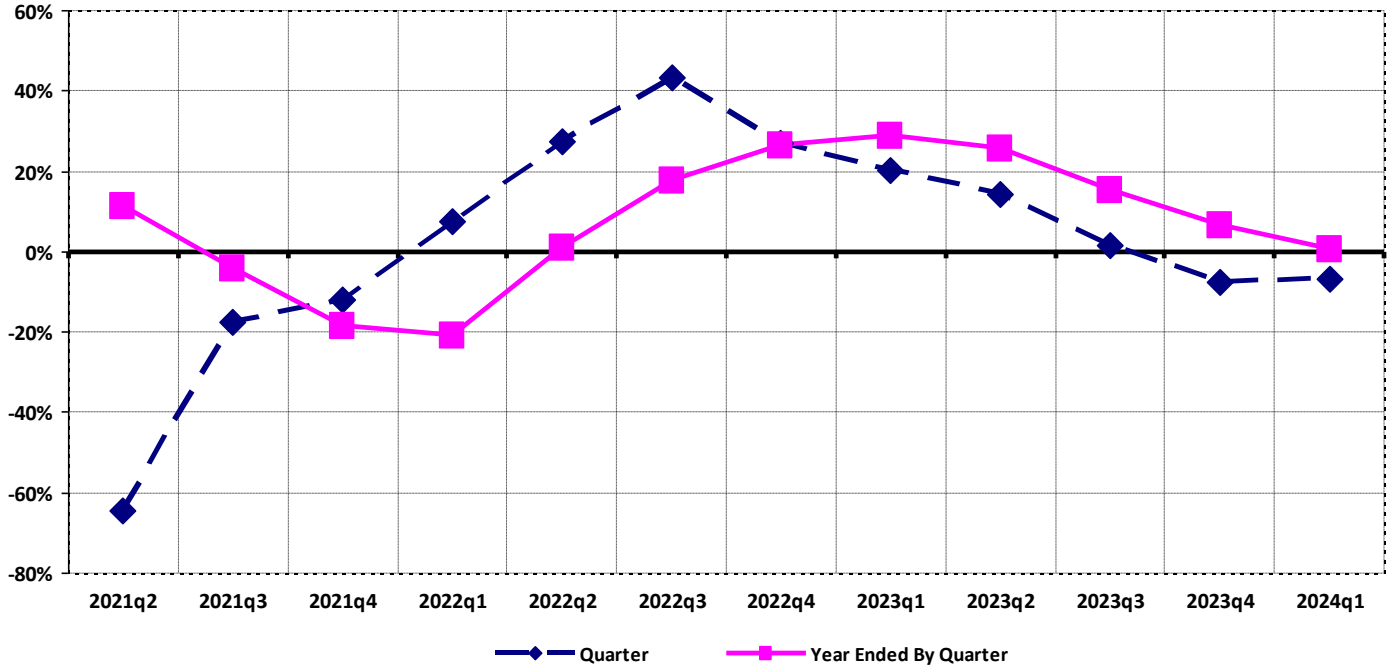
## Chart 6. Net Income (Loss) Year Ended By Quarter



# TOTAL PASSENGER NATIONALS GROUP AIRLINES SYSTEM ENTITY

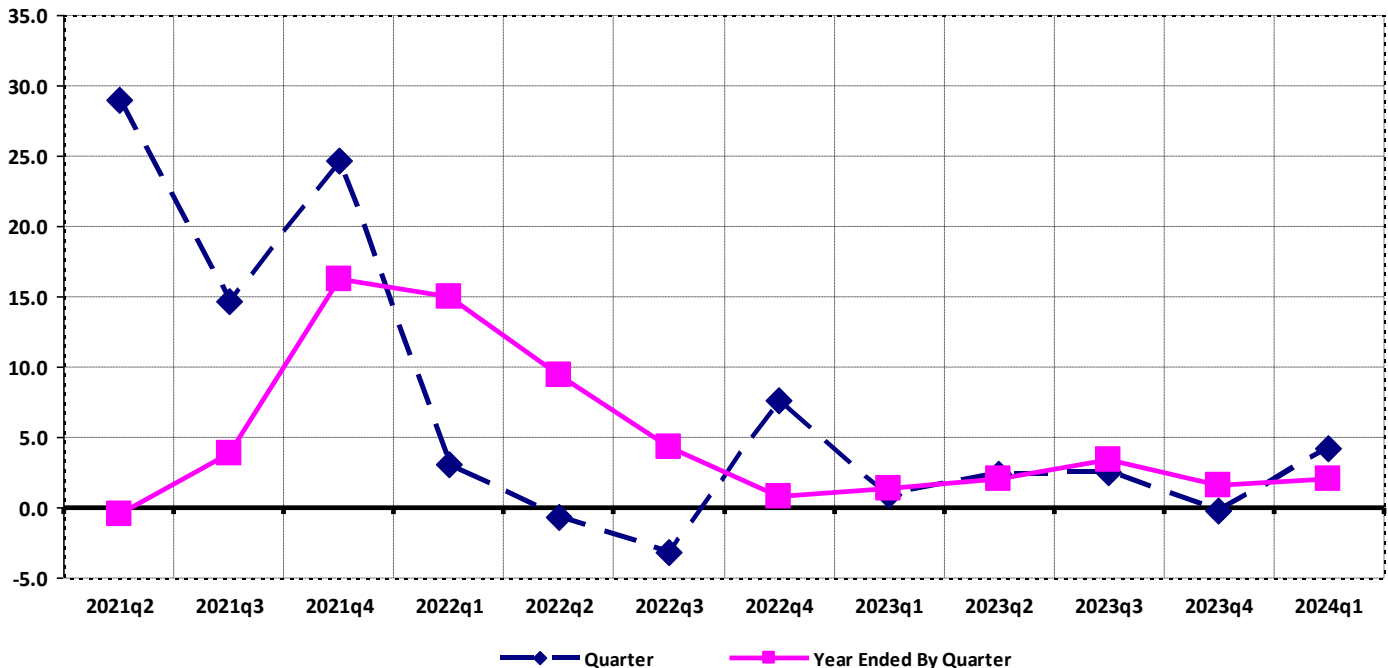
## Chart 7. Operating Revenue Per Revenue Ton-Mile Year Over Year Percent Change

Percent Change YOY



## Chart 8. Ton Load Factor Year Over Year Point Change

Point Change YOY

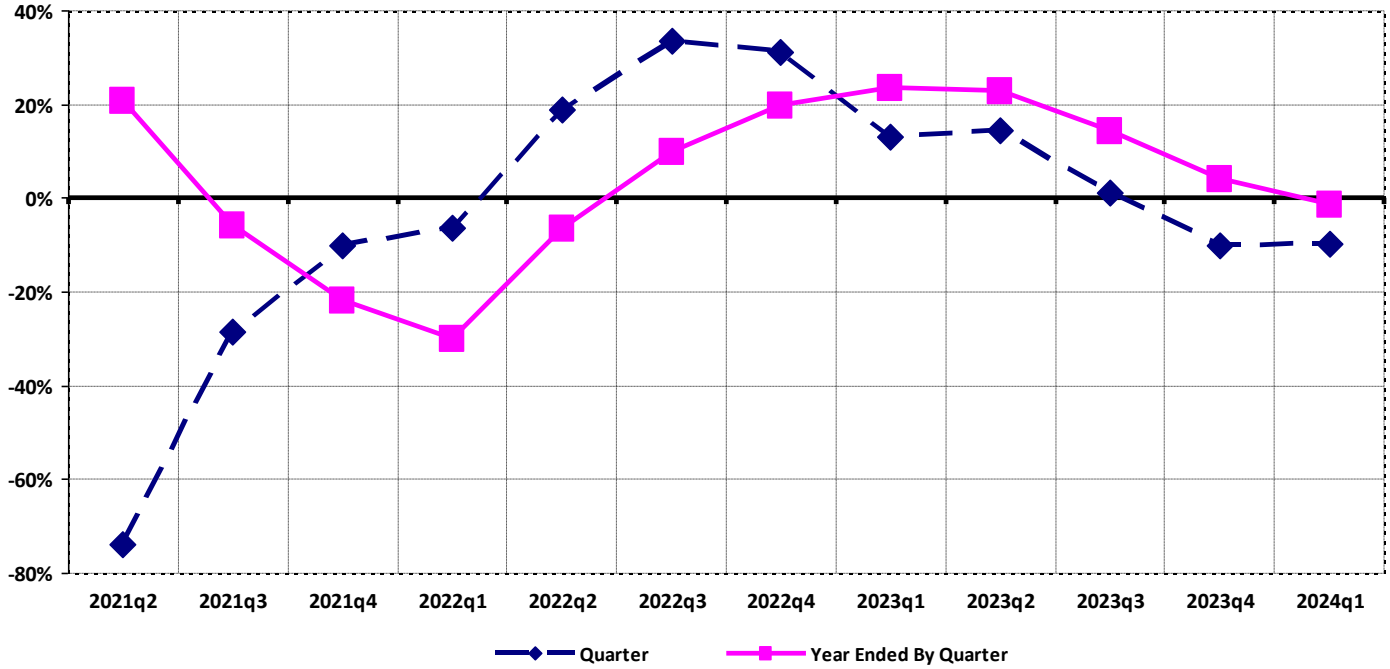




# TOTAL PASSENGER NATIONALS GROUP AIRLINES SYSTEM ENTITY

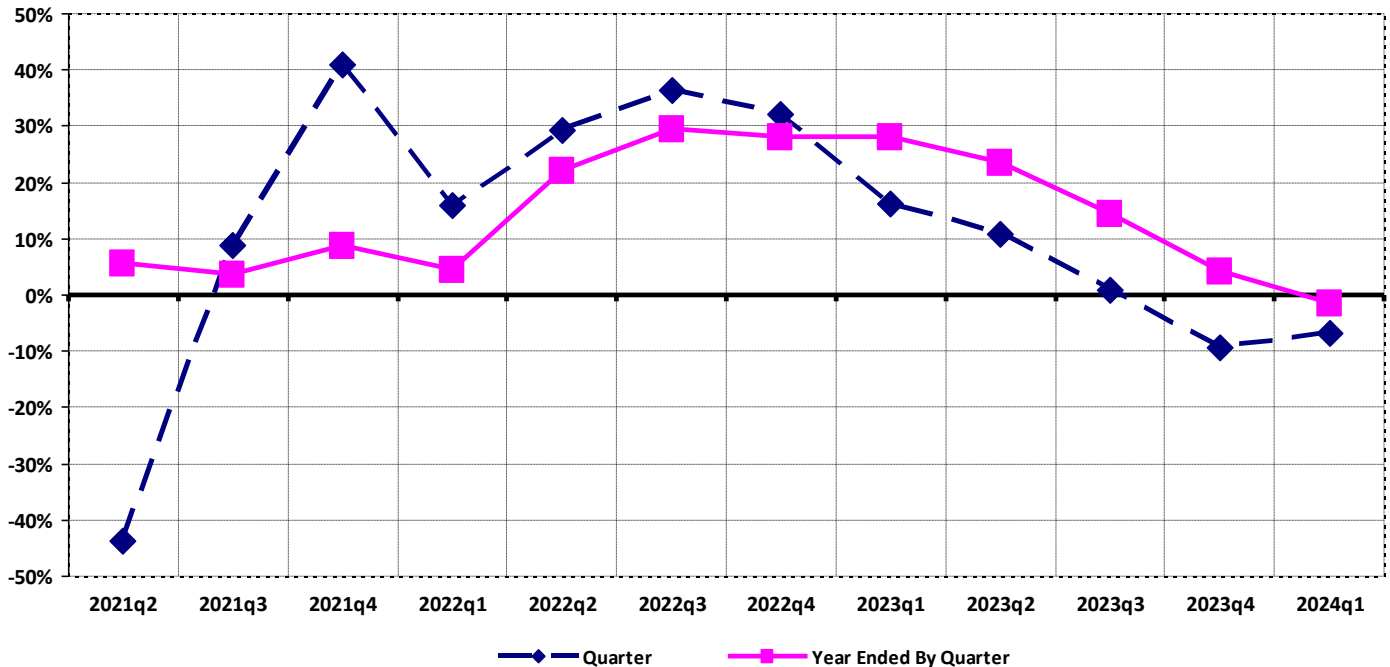
## Chart 9. Operating Expense Per Revenue Ton-Mile Year Over Year Percent Change

Percent Change YOY



## Chart 10. Operating Expense Per Available Ton-Mile Year Over Year Percent Change

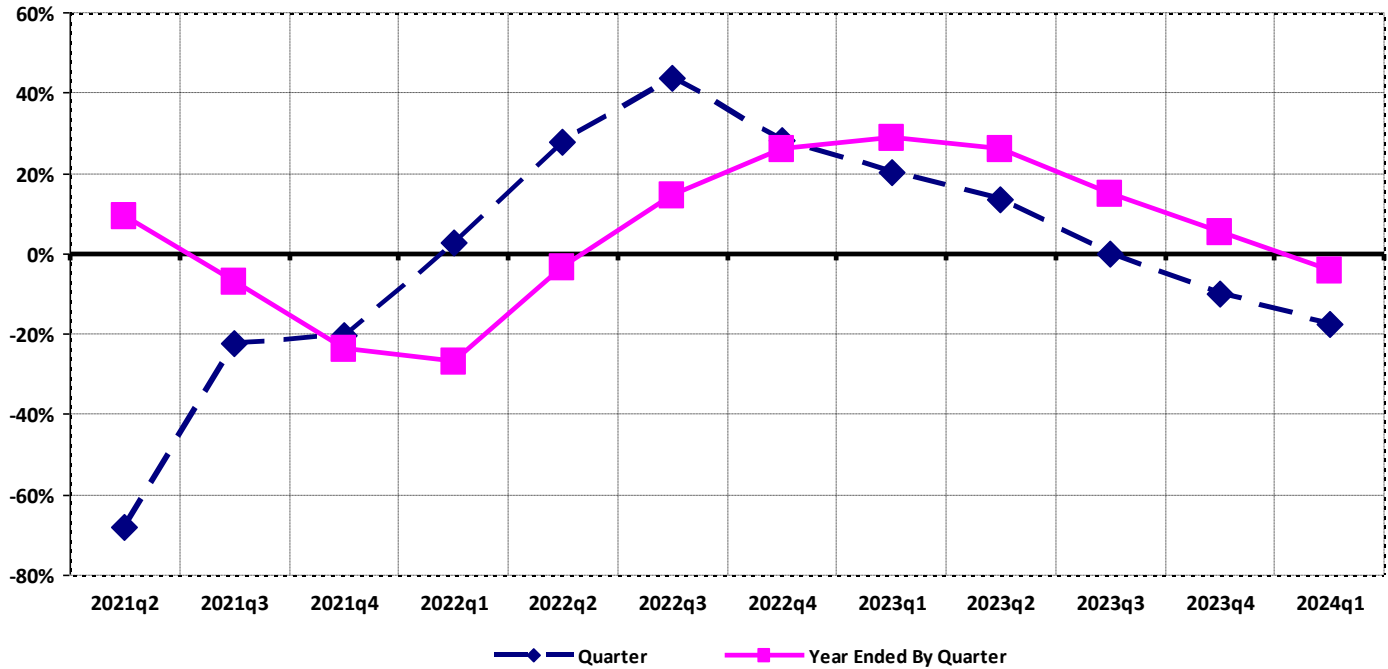
Percent Change YOY



# TOTAL PASSENGER NATIONALS GROUP AIRLINES SYSTEM ENTITY

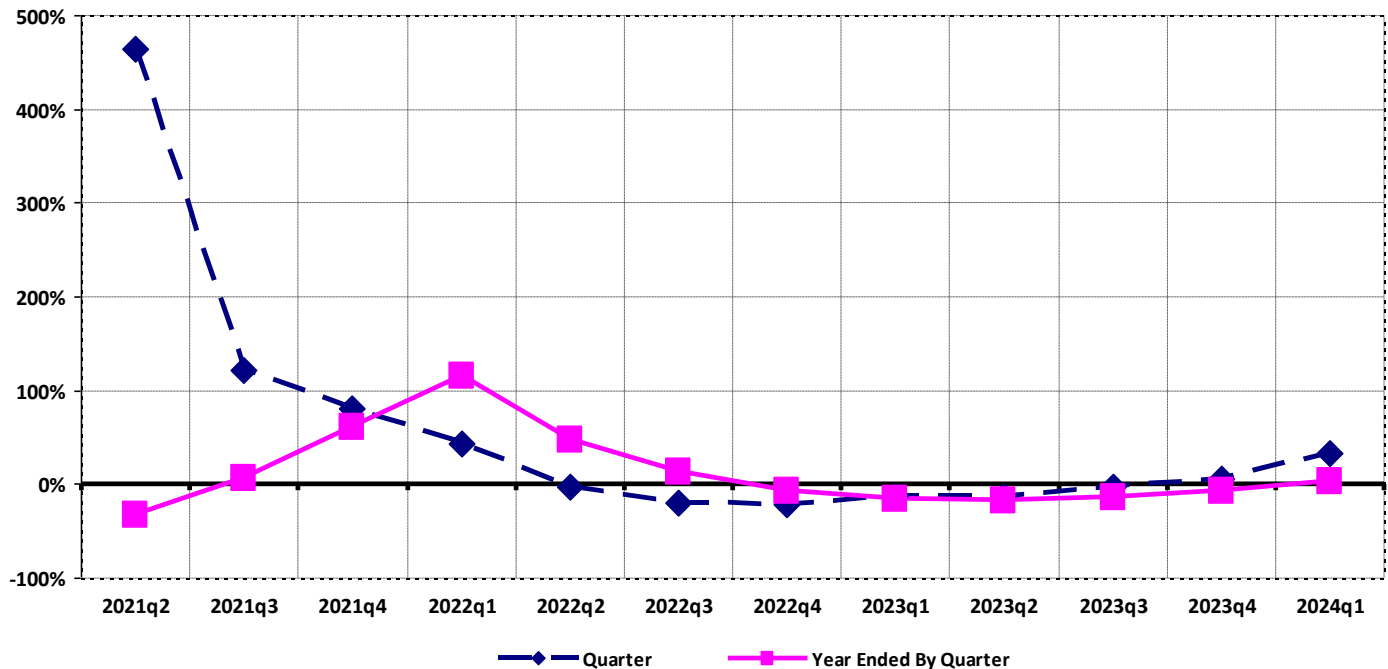
## Chart 11. Passenger Revenue Per Revenue Passenger Mile Year Over Year Percent Change

Percent Change YOY



## Chart 12. Revenue Passenger Miles (Scheduled Service) Year Over Year Percent Change

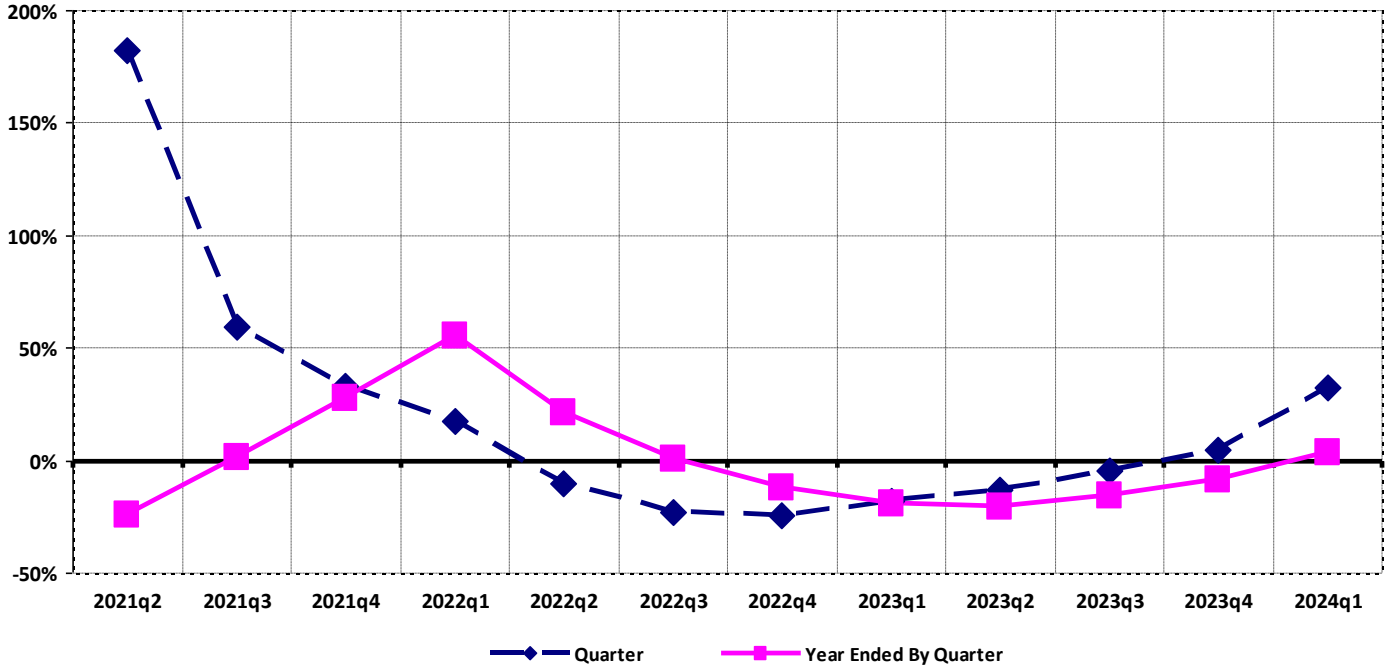
Percent Change YOY



# TOTAL PASSENGER NATIONALS GROUP AIRLINES SYSTEM ENTITY

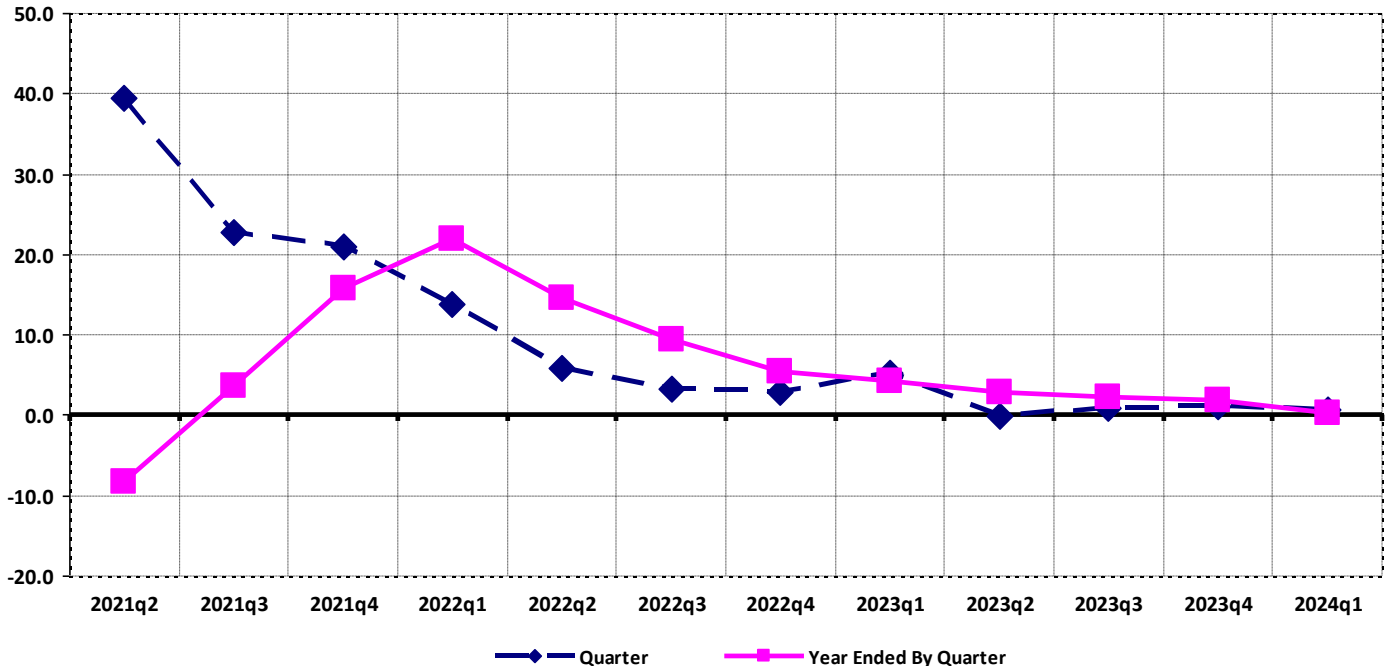
## Chart 13. Available Seat Miles (Scheduled Passenger Service) Year Over Year Percent Change

Percent Change YOY



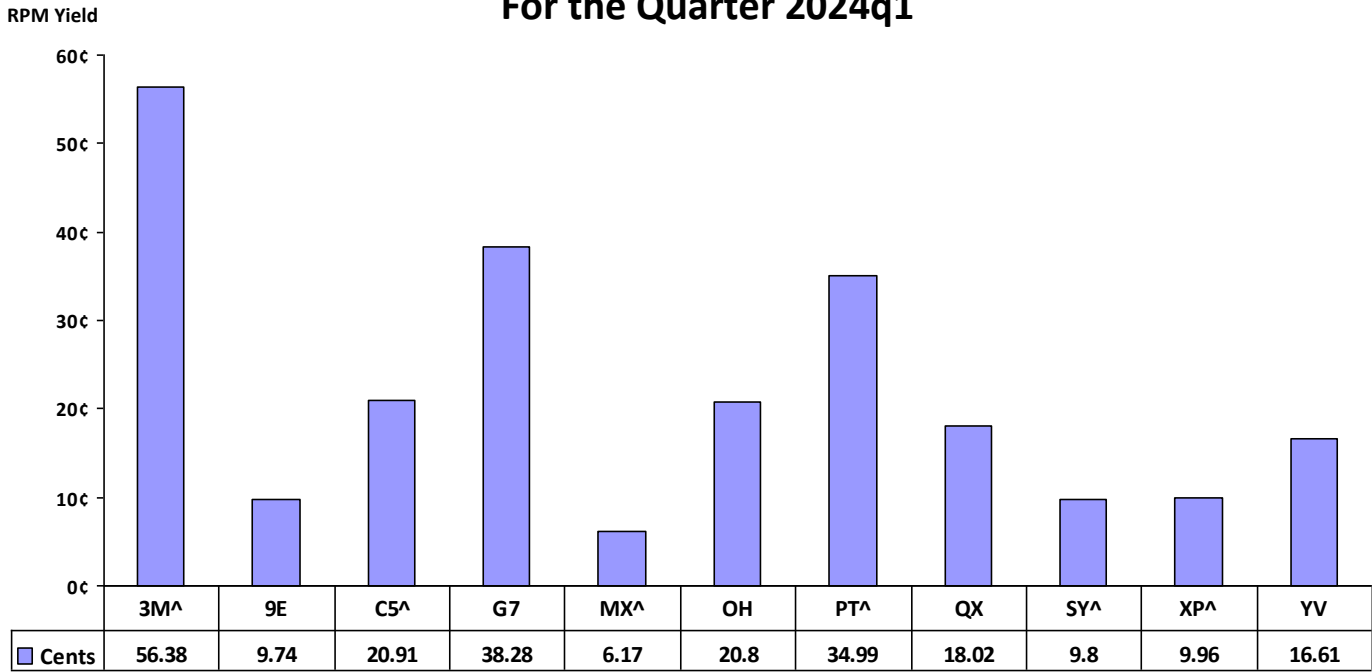
## Chart 14. Passenger Load Factor Year Over Year Point Change

Point Change YOY

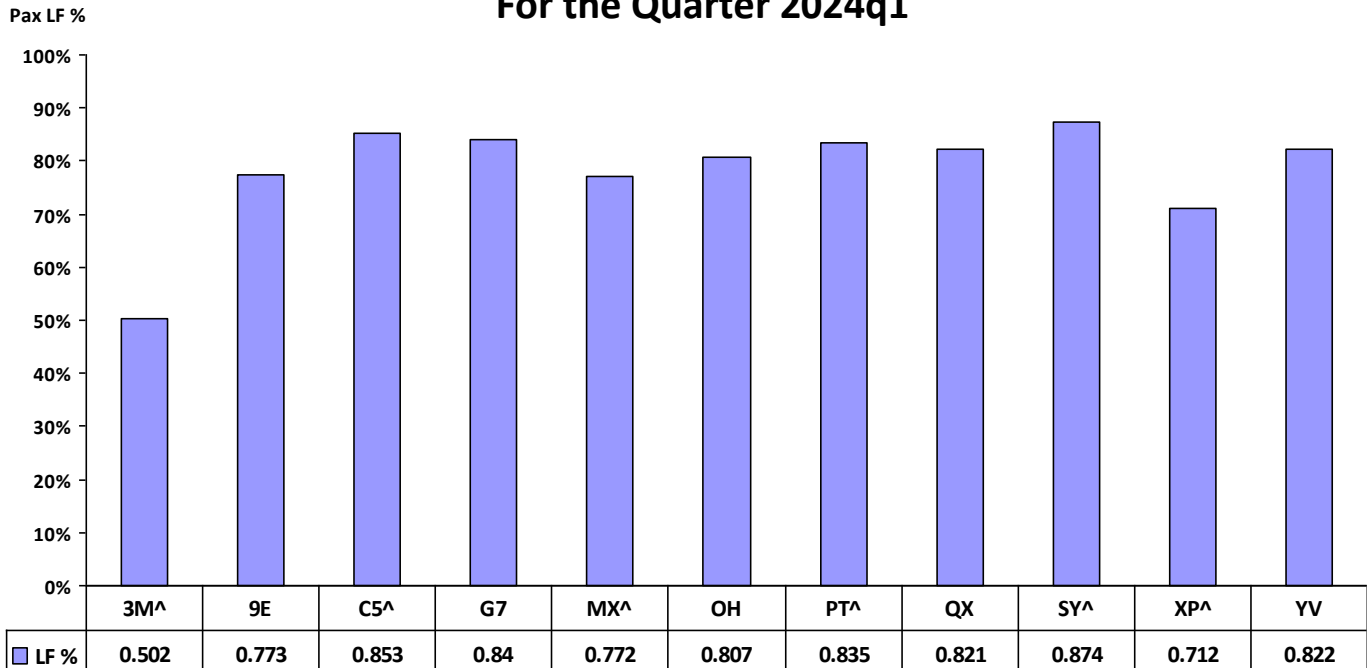


# TOTAL PASSENGER NATIONALS GROUP AIRLINES SYSTEM ENTITY

## Chart 15. Passenger (RPM) Yield For the Quarter 2024q1



## Chart 16. Passenger Load Factor For the Quarter 2024q1



# QUARTERLY FINANCIAL & TRAFFIC REVIEW

## SYSTEM OPERATIONS

### Air Wisconsin Airlines Corp (ZW)^

Items	Quarter Ended		12 Months Ended			
		2023 q1		2023 q3	2023 q2	2023 q1
<b>FINANCIAL RESULTS: (\$Millions)</b>						
1	Operating Revenues	59.1		216.9	225.2	241.0
2	Operating Expenses	63.0		245.8	246.8	240.1
3	Operating Profit (Loss)	-3.9		-28.9	-21.7	0.9
4	Net Income (Loss)	-1.9		-19.0	-13.8	1.8
<b>TRAFFIC: (Thousands)</b>						
5	RPMs - Scheduled Rev. Svc.	197.4		836.2	906.9	1,002.1
6	ASMs - Scheduled Rev. Svc.	240.1		983.9	1,063.0	1,169.7
7	Overall RTMs (All Svc.)	19.7		83.6	90.7	100.2
8	Overall ATMs (All Svc.)	29.4		120.4	130.1	143.2
<b>YIELD &amp; UNIT COST &amp; PROFITS: (Cents)</b>						
9	Operating Revenue per RTM	299.6		259.4	248.3	240.5
10	Operating Expense per RTM	319.1		293.9	272.2	239.6
11	Operating Profit (Loss) per RTM	-19.5		-34.5	-23.9	0.9
12	Operating Expense per ATM	214.3		204.1	189.7	167.7
13	Passenger Revenue per RPM	29.91		25.89	24.80	24.03
<b>FINANCIAL RATIOS:</b>						
14	Operating Revenues to Total Investment	*	*	1.17	1.22	1.32
15	Times Interest Earned	*	*	642.72	-899.49	363.83
16	Current Assets to Current Liabilities	*	*	1.62	3.33	2.90
17	No. of Days Cash Coverage of Cash Exp.	*	*	102.4	112.0	151.3
<b>FINANCIAL PERCENTAGES: (%)</b>						
18	Operating Profit (Loss) to Operating Revenue	-6.5		-13.3	-9.6	0.4
19	Net Income to Stockholders Equity	*	*	-15.58	-11.60	1.59
20	Corporate Return on Investment	*	*	-10.3	-7.5	1.0
21	Debt to Total Investment	*	*	31.5	30.8	31.9
<b>PASSENGER LOAD FACTOR: (Sch. Svc. %)</b>						
22	Actual	82.2		85.0	85.3	85.7
23	Breakeven	88.3		97.7	94.6	85.4
<b>Employment &amp; Productivity:</b>						
24	Employment, Total Weighted Avg CY	1,114		1,110	1,111	1,120
25	Overall RTM's per Employee (000)	17.7		75.3	81.6	89.5
<b>CHANGE OVER COMPARABLE PERIOD 12 MONTHS EARLIER</b>						
26	Operating Revenues (%)	2.2		-15.3	-16.5	-5.7
27	Operating Expenses (%)	13.1		4.8	5.7	6.5
28	Operating Profit (Loss) (in Millions \$)	-6.0		-50.6	-57.7	-29.4
29	Net Income (Loss) (in Millions \$)	-3.5		-35.7	-64.7	-62.9
30	RPMs (Sch. Svc.) (%)	-20.1		-25.8	-32.8	-21.8
31	ASMs (Sch. Svc.) (%)	-25.1		-27.3	-34.9	-25.4
32	Operating Revenues per RTM (%)	28.0		14.1	24.2	20.6
33	Operating Expense per RTM (%)	41.6		41.3	57.2	36.3
34	Passenger Revenue per RPM (Sch. Svc.)(%)	27.8		13.9	24.1	20.5

# QUARTERLY FINANCIAL & TRAFFIC REVIEW

## SYSTEM OPERATIONS

### Breeze Aviation Group DBA Breeze (MX)^

Items	Quarter Ended		12 Months Ended			
	2024 q1		2024 q1			
<b>FINANCIAL RESULTS: (\$Millions)</b>						
1 Operating Revenues	145.9		145.9			
2 Operating Expenses	173.0		173.0			
3 Operating Profit (Loss)	-27.1		-27.1			
4 Net Income (Loss)	-28.1		-28.1			
<b>TRAFFIC: (Thousands)</b>						
5 RPMs - Scheduled Rev. Svc.	816.2		816.2			
6 ASMs - Scheduled Rev. Svc.	1,057.8		1,057.8			
7 Overall RTMs (All Svc.)	83.8		83.8			
8 Overall ATMs (All Svc.)	139.4		139.4			
<b>YIELD &amp; UNIT COST &amp; PROFITS: (Cents)</b>						
9 Operating Revenue per RTM	174.1		174.1			
10 Operating Expense per RTM	206.5		206.5			
11 Operating Profit (Loss) per RTM	-32.4		-32.4			
12 Operating Expense per ATM	124.1		124.1			
13 Passenger Revenue per RPM	6.17		6.17			
<b>FINANCIAL RATIOS:</b>						
14 Operating Revenues to Total Investment	*	*	0.96			
15 Times Interest Earned	*	*	-12.33			
16 Current Assets to Current Liabilities	*	*	0.72			
17 No. of Days Cash Coverage of Cash Exp.	*	*	331.0			
<b>FINANCIAL PERCENTAGES: (%)</b>						
18 Operating Profit (Loss) to Operating Revenue	-18.6		-18.6			
19 Net Income to Stockholders Equity	*	*	145.18			
20 Corporate Return on Investment	*	*	-17.1			
21 Debt to Total Investment	*	*	112.7			
<b>PASSENGER LOAD FACTOR: (Sch. Svc. %)</b>						
22 Actual	77.2		77.2			
23 Breakeven	220.4		220.4			
<b>Employment &amp; Productivity:</b>						
24 Employment, Total Weighted Avg CY	1,672		418			
25 Overall RTM's per Employee (000)	50.1		200.5			
<b>CHANGE OVER COMPARABLE PERIOD 12 MONTHS EARLIER</b>						
26 Operating Revenues (%)						
27 Operating Expenses (%)						
28 Operating Profit (Loss) (in Millions \$)						
29 Net Income (Loss) (in Millions \$)						
30 RPMs (Sch. Svc.) (%)						
31 ASMs (Sch. Svc.) (%)						
32 Operating Revenues per RTM (%)						
33 Operating Expense per RTM (%)						
34 Passenger Revenue per RPM (Sch. Svc.)(%)						

# QUARTERLY FINANCIAL & TRAFFIC REVIEW

## SYSTEM OPERATIONS

### CommuteAir LLC dba CommuteAir (C5)^

Items	Quarter Ended		12 Months Ended				
	2024 q1	2023 q1	2024 q1	2023 q4	2023 q3	2023 q2	2023 q1
<b>FINANCIAL RESULTS: (\$Millions)</b>							
1 Operating Revenues	59.7	67.0	239.2	246.6	269.5	279.8	277.5
2 Operating Expenses	56.6	65.5	230.8	239.7	254.7	264.0	267.2
3 Operating Profit (Loss)	3.1	1.5	8.4	6.9	14.7	15.9	10.3
4 Net Income (Loss)	3.2	1.3	9.0	7.1	14.5	15.0	8.8
<b>TRAFFIC: (Thousands)</b>							
5 RPMs - Scheduled Rev. Svc.	285.3	316.4	1,208.1	1,239.2	1,287.8	1,341.0	1,347.3
6 ASMs - Scheduled Rev. Svc.	334.3	376.3	1,391.9	1,433.9	1,500.6	1,572.3	1,589.6
7 Overall RTMs (All Svc.)	28.5	31.6	120.8	123.9	128.8	134.1	134.7
8 Overall ATMs (All Svc.)	40.5	49.9	180.7	190.0	194.5	190.3	173.8
<b>YIELD &amp; UNIT COST &amp; PROFITS: (Cents)</b>							
9 Operating Revenue per RTM	209.1	211.8	198.0	199.0	209.2	208.7	206.0
10 Operating Expense per RTM	198.4	207.0	191.1	193.4	197.8	196.8	198.3
11 Operating Profit (Loss) per RTM	10.7	4.9	7.0	5.6	11.4	11.8	7.7
12 Operating Expense per ATM	139.7	131.3	127.8	126.2	131.0	138.7	153.7
13 Passenger Revenue per RPM	20.91	21.18	19.80	19.90	20.92	20.87	20.60
<b>FINANCIAL RATIOS:</b>							
14 Operating Revenues to Total Investment	*	*	8.47	9.17	12.08	15.48	17.57
15 Times Interest Earned	*	*	5.46	4.42	7.50	7.53	4.92
16 Current Assets to Current Liabilities	*	*	1.84	1.88	1.89	1.89	1.98
17 No. of Days Cash Coverage of Cash Exp.	*	*	69.2	73.9	64.4	60.1	55.8
<b>FINANCIAL PERCENTAGES: (%)</b>							
18 Operating Profit (Loss) to Operating Revenue	5.1	2.3	3.5	2.8	5.5	5.7	3.7
19 Net Income to Stockholders Equity	*	*	-1,704.20	-396.06	-328.03	-228.38	-130.36
20 Corporate Return on Investment	*	*	39.1	34.5	74.8	96.0	70.1
21 Debt to Total Investment	*	*	88.4	97.8	110.4	111.9	104.8
<b>PASSENGER LOAD FACTOR: (Sch. Svc. %)</b>							
22 Actual	85.3	84.1	86.8	86.4	85.8	85.3	84.8
23 Breakeven	80.5	81.9	83.4	83.7	80.6	79.9	81.3
<b>Employment &amp; Productivity:</b>							
24 Employment, Total Weighted Avg CY	1,127	1,288	1,190	1,230	1,257	1,164	1,157
25 Overall RTM's per Employee (000)	25.3	24.6	101.5	100.8	102.5	115.2	116.5
<b>CHANGE OVER COMPARABLE PERIOD 12 MONTHS EARLIER</b>							
26 Operating Revenues (%)	-11.0	7.2	-13.8	-9.7	5.2	15.6	24.4
27 Operating Expenses (%)	-13.6	5.2	-13.6	-9.2	-0.6	5.1	10.6
28 Operating Profit (Loss) (in Millions \$)	1.5	1.3	-1.9	-2.2	14.9	24.8	28.8
29 Net Income (Loss) (in Millions \$)	1.8	1.5	0.2	-0.2	15.2	11.9	0.6
30 RPMs (Sch. Svc.) (%)	-9.8	6.9	-10.3	-6.6	-5.2	-0.5	2.0
31 ASMs (Sch. Svc.) (%)	-11.2	0.6	-12.4	-9.7	-8.0	-4.7	-2.9
32 Operating Revenues per RTM (%)	-1.3	0.3	-3.9	-3.3	10.9	16.1	21.9
33 Operating Expense per RTM (%)	-4.1	-1.5	-3.7	-2.8	4.8	5.7	8.4
34 Passenger Revenue per RPM (Sch. Svc.)(%)	-1.3	0.3	-3.9	-3.3	10.9	16.1	21.9

# QUARTERLY FINANCIAL & TRAFFIC REVIEW

## SYSTEM OPERATIONS

### Endeavor Air Inc. (9E)

Items	Quarter Ended		12 Months Ended				
	2024 q1	2023 q1	2024 q1	2023 q4	2023 q3	2023 q2	2023 q1
<b>FINANCIAL RESULTS: (\$Millions)</b>							
1 Operating Revenues	137.4	145.6	554.1	562.3	567.0	590.8	626.8
2 Operating Expenses	216.0	236.0	885.5	905.5	927.9	934.0	945.5
3 Operating Profit (Loss)	-78.7	-90.4	-331.5	-343.2	-360.9	-343.2	-318.7
4 Net Income (Loss)	-76.8	-90.3	-326.5	-340.0	-358.3	-341.0	-318.3
<b>TRAFFIC: (Thousands)</b>							
5 RPMs - Scheduled Rev. Svc.	1,410.0	1,162.9	5,732.1	5,485.1	5,281.7	5,248.2	5,384.1
6 ASMs - Scheduled Rev. Svc.	1,823.4	1,568.9	6,984.1	6,729.5	6,542.9	6,582.2	6,768.4
7 Overall RTMs (All Svc.)	141.0	116.3	573.2	548.5	528.2	524.8	538.4
8 Overall ATMs (All Svc.)	253.7	217.3	971.3	934.9	907.2	910.2	933.1
<b>YIELD &amp; UNIT COST &amp; PROFITS: (Cents)</b>							
9 Operating Revenue per RTM	97.4	125.2	96.7	102.5	107.4	112.6	116.4
10 Operating Expense per RTM	153.2	202.9	154.5	165.1	175.7	178.0	175.6
11 Operating Profit (Loss) per RTM	-55.8	-77.8	-57.8	-62.6	-68.3	-65.4	-59.2
12 Operating Expense per ATM	85.2	108.6	91.2	96.9	102.3	102.6	101.3
13 Passenger Revenue per RPM	9.74	12.52	9.67	10.25	10.74	11.26	11.64
<b>FINANCIAL RATIOS:</b>							
14 Operating Revenues to Total Investment	*	*	2.70	2.51	2.77	3.05	3.88
15 Times Interest Earned	*	*	-2,984.29	-3,728.56	1,486.51	5,268.85	-1,729.83
16 Current Assets to Current Liabilities	*	*	1.40	1.75	1.47	1.84	1.47
17 No. of Days Cash Coverage of Cash Exp.	*	*	39.0	73.6	38.9	51.2	20.1
<b>FINANCIAL PERCENTAGES: (%)</b>							
18 Operating Profit (Loss) to Operating Revenue	-57.3	-62.1	-59.8	-61.0	-63.6	-58.1	-50.9
19 Net Income to Stockholders Equity	*	*	-165.12	-156.97	-181.11	-183.92	-210.07
20 Corporate Return on Investment	*	*	-158.9	-151.7	-175.3	-176.2	-197.0
21 Debt to Total Investment	*	*	4.9	3.5	4.0	2.7	4.1
<b>PASSENGER LOAD FACTOR: (Sch. Svc. %)</b>							
22 Actual	77.3	74.1	82.1	81.5	80.7	79.7	79.5
23 Breakeven	126.5	125.3	136.6	136.8	137.8	131.2	124.5
<b>Employment &amp; Productivity:</b>							
24 Employment, Total Weighted Avg CY	4,377	4,738	4,448	4,538	4,668	4,774	4,855
25 Overall RTM's per Employee (000)	32.2	24.5	128.9	120.9	113.1	109.9	110.9
<b>CHANGE OVER COMPARABLE PERIOD 12 MONTHS EARLIER</b>							
26 Operating Revenues (%)	-5.6	-13.6	-11.6	-13.5	-15.2	-11.6	-4.3
27 Operating Expenses (%)	-8.5	16.4	-6.3	-0.8	7.2	12.3	20.9
28 Operating Profit (Loss) (in Millions \$)	11.8	-56.1	-12.7	-80.6	-164.0	-179.6	-191.1
29 Net Income (Loss) (in Millions \$)	13.5	-55.6	-8.2	-77.3	-160.5	-128.7	-102.7
30 RPMs (Sch. Svc.) (%)	21.2	3.2	6.5	2.6	-4.7	-8.4	-4.8
31 ASMs (Sch. Svc.) (%)	16.2	-9.9	3.2	-3.0	-10.0	-11.8	-11.2
32 Operating Revenues per RTM (%)	-22.2	-16.3	-17.0	-15.6	-11.0	-3.5	0.5
33 Operating Expense per RTM (%)	-24.5	12.8	-12.0	-3.2	12.5	22.5	26.9
34 Passenger Revenue per RPM (Sch. Svc.)(%)	-22.2	-16.3	-17.0	-15.6	-11.0	-3.5	0.5



# QUARTERLY FINANCIAL & TRAFFIC REVIEW

## SYSTEM OPERATIONS

### GoJet Airlines LLC d/b/a United Express (G7)

Items	Quarter Ended		12 Months Ended				
	2024 q1	2023 q1	2024 q1	2023 q4	2023 q3	2023 q2	2023 q1
<b>FINANCIAL RESULTS: (\$Millions)</b>							
1 Operating Revenues	59.7	57.1	241.6	239.0	231.9	241.1	240.3
2 Operating Expenses	60.7	55.2	237.4	231.9	225.6	227.1	232.9
3 Operating Profit (Loss)	-1.1	1.9	4.2	7.1	6.3	14.0	7.3
4 Net Income (Loss)	-1.0	1.7	4.2	6.9	5.7	13.4	7.8
<b>TRAFFIC: (Thousands)</b>							
5 RPMs - Scheduled Rev. Svc.	155.1	134.3	627.8	607.0	577.7	575.6	624.3
6 ASMs - Scheduled Rev. Svc.	184.5	176.8	742.8	735.1	715.0	726.6	794.7
7 Overall RTMs (All Svc.)	15.5	13.4	62.8	60.7	57.8	57.6	62.4
8 Overall ATMs (All Svc.)	32.5	31.1	130.8	129.5	125.9	128.0	139.9
<b>YIELD &amp; UNIT COST &amp; PROFITS: (Cents)</b>							
9 Operating Revenue per RTM	384.7	425.1	384.8	393.8	401.5	418.8	384.9
10 Operating Expense per RTM	391.5	411.3	378.1	382.0	390.5	394.5	373.1
11 Operating Profit (Loss) per RTM	-6.8	13.9	6.7	11.8	11.0	24.4	11.7
12 Operating Expense per ATM	186.8	177.3	181.5	179.1	179.2	177.4	166.5
13 Passenger Revenue per RPM	38.28	41.13	37.53	38.13	38.96	40.77	37.56
<b>FINANCIAL RATIOS:</b>							
14 Operating Revenues to Total Investment	*	*	1.78	2.65	10.98	16.56	34.41
15 Times Interest Earned	*	*	3.67	5.41	4.65	10.42	8.09
16 Current Assets to Current Liabilities	*	*	0.73	0.59	1.44	1.29	1.29
17 No. of Days Cash Coverage of Cash Exp.	*	*	65.0	69.0	76.7	72.5	68.8
<b>FINANCIAL PERCENTAGES: (%)</b>							
18 Operating Profit (Loss) to Operating Revenue	-1.8	3.3	1.8	3.0	2.7	5.8	3.1
19 Net Income to Stockholders Equity	*	*	-36.37	-54.33	-40.58	-76.55	-40.70
20 Corporate Return on Investment	*	*	4.2	9.4	34.3	102.0	127.1
21 Debt to Total Investment	*	*	104.1	102.5	139.7	167.1	168.3
<b>PASSENGER LOAD FACTOR: (Sch. Svc. %)</b>							
22 Actual	84.0	75.9	84.5	82.6	80.8	79.2	78.6
23 Breakeven	86.2	75.9	85.2	82.7	81.0	76.4	78.0
<b>Employment &amp; Productivity:</b>							
24 Employment, Total Weighted Avg CY	870	839	842	834	834	867	924
25 Overall RTM's per Employee (000)	17.8	16.0	74.6	72.8	69.3	66.4	67.6
<b>CHANGE OVER COMPARABLE PERIOD 12 MONTHS EARLIER</b>							
26 Operating Revenues (%)	4.5	5.3	0.6	0.7	-6.5	4.6	6.4
27 Operating Expenses (%)	10.0	-16.8	1.9	-5.0	-12.7	-15.0	-10.3
28 Operating Profit (Loss) (in Millions \$)	-2.9	14.0	-3.1	13.9	16.8	50.5	41.1
29 Net Income (Loss) (in Millions \$)	-2.7	12.4	-3.6	11.5	-0.5	15.0	-5.4
30 RPMs (Sch. Svc.) (%)	15.5	-28.9	0.6	-10.6	-29.6	-42.0	-40.7
31 ASMs (Sch. Svc.) (%)	4.4	-36.0	-6.5	-17.8	-33.4	-42.6	-40.1
32 Operating Revenues per RTM (%)	-9.5	48.2	0.0	12.6	32.8	80.3	79.4
33 Operating Expense per RTM (%)	-4.8	17.1	1.3	6.3	24.0	46.6	51.3
34 Passenger Revenue per RPM (Sch. Svc.)(%)	-6.9	45.7	-0.1	11.3	33.3	80.6	81.7

# QUARTERLY FINANCIAL & TRAFFIC REVIEW

## SYSTEM OPERATIONS

### Horizon Air (QX)

Items	Quarter Ended		12 Months Ended				
	2024 q1	2023 q1	2024 q1	2023 q4	2023 q3	2023 q2	2023 q1
<b>FINANCIAL RESULTS: (\$Millions)</b>							
1 Operating Revenues	103.8	77.9	400.3	374.4	345.0	334.8	343.3
2 Operating Expenses	80.7	84.6	334.9	338.8	347.4	372.5	389.4
3 Operating Profit (Loss)	23.2	-6.7	65.4	35.6	-2.5	-37.7	-46.1
4 Net Income (Loss)	9.5	-11.4	9.7	-11.2	-22.8	-45.8	-49.3
<b>TRAFFIC: (Thousands)</b>							
5 RPMs - Scheduled Rev. Svc.	574.7	370.0	2,332.4	2,127.7	1,959.6	1,971.1	2,093.3
6 ASMs - Scheduled Rev. Svc.	700.2	468.4	2,798.3	2,566.5	2,363.1	2,409.3	2,581.9
7 Overall RTMs (All Svc.)	57.7	37.3	234.6	214.2	197.4	198.4	210.5
8 Overall ATMs (All Svc.)	90.5	60.8	362.5	332.8	305.7	307.5	325.0
<b>YIELD &amp; UNIT COST &amp; PROFITS: (Cents)</b>							
9 Operating Revenue per RTM	179.8	208.8	170.6	174.8	174.7	168.7	163.1
10 Operating Expense per RTM	139.7	226.7	142.8	158.2	176.0	187.7	185.0
11 Operating Profit (Loss) per RTM	40.1	-17.9	27.9	16.6	-1.3	-19.0	-21.9
12 Operating Expense per ATM	89.1	139.2	92.4	101.8	113.7	121.1	119.8
13 Passenger Revenue per RPM	18.02	21.04	17.15	17.59	17.59	16.98	16.39
<b>FINANCIAL RATIOS:</b>							
14 Operating Revenues to Total Investment	*	*	0.51	0.52	0.51	0.53	0.54
15 Times Interest Earned	*	*	1.52	0.92	-0.03	-1.24	-1.79
16 Current Assets to Current Liabilities	*	*	0.98	1.00	0.79	0.65	0.65
17 No. of Days Cash Coverage of Cash Exp.	*	*	0.1	0.0	0.1	0.3	0.1
<b>FINANCIAL PERCENTAGES: (%)</b>							
18 Operating Profit (Loss) to Operating Revenue	22.3	-8.6	16.3	9.5	-0.7	-11.3	-13.4
19 Net Income to Stockholders Equity	*	*	3.10	-3.59	-7.13	-13.90	-14.46
20 Corporate Return on Investment	*	*	6.9	4.1	2.0	-2.6	-3.8
21 Debt to Total Investment	*	*	64.9	65.0	63.1	56.2	46.1
<b>PASSENGER LOAD FACTOR: (Sch. Svc. %)</b>							
22 Actual	82.1	79.0	83.3	82.9	82.9	81.8	81.1
23 Breakeven	61.7	86.5	68.2	74.1	83.6	92.1	93.2
<b>Employment &amp; Productivity:</b>							
24 Employment, Total Weighted Avg CY	2,853	2,888	2,846	2,855	2,903	2,986	3,088
25 Overall RTM's per Employee (000)	20.2	12.9	82.4	75.0	68.0	66.5	68.2
<b>CHANGE OVER COMPARABLE PERIOD 12 MONTHS EARLIER</b>							
26 Operating Revenues (%)	33.2	-17.2	16.6	4.2	-7.5	-13.4	-13.4
27 Operating Expenses (%)	-4.7	-50.0	-14.0	-28.5	-28.0	-19.5	-14.2
28 Operating Profit (Loss) (in Millions \$)	29.8	68.5	111.6	150.3	106.9	38.7	11.3
29 Net Income (Loss) (in Millions \$)	20.9	52.5	59.0	90.6	76.3	27.1	-29.7
30 RPMs (Sch. Svc.) (%)	55.3	-36.7	11.4	-7.8	-22.1	-26.9	-27.7
31 ASMs (Sch. Svc.) (%)	49.5	-38.1	8.4	-10.6	-24.4	-29.1	-30.6
32 Operating Revenues per RTM (%)	-13.9	30.1	4.7	12.8	18.2	18.2	19.5
33 Operating Expense per RTM (%)	-38.4	-21.5	-22.8	-22.6	-7.9	9.8	18.5
34 Passenger Revenue per RPM (Sch. Svc.)(%)	-14.4	30.7	4.6	13.0	18.6	18.5	19.7

# QUARTERLY FINANCIAL & TRAFFIC REVIEW

## SYSTEM OPERATIONS

### Mesa Airlines Inc. (YV)

Items	Quarter Ended		12 Months Ended				
	2024 q1	2023 q1	2024 q1	2023 q4	2023 q3	2023 q2	2023 q1
<b>FINANCIAL RESULTS: (\$Millions)</b>							
1 Operating Revenues	131.6	121.8	479.1	469.3	495.2	497.2	513.9
2 Operating Expenses	116.9	131.0	505.4	519.5	529.2	528.2	528.4
3 Operating Profit (Loss)	14.7	-9.2	-26.4	-50.2	-33.9	-31.0	-14.5
4 Net Income (Loss)	21.4	-38.2	-116.7	-176.3	-122.9	-242.3	-197.1
<b>TRAFFIC: (Thousands)</b>							
5 RPMs - Scheduled Rev. Svc.	792.0	875.8	3,339.4	3,423.1	3,585.5	3,965.9	4,508.8
6 ASMs - Scheduled Rev. Svc.	963.5	1,066.4	3,986.1	4,089.0	4,239.8	4,652.2	5,213.3
7 Overall RTMs (All Svc.)	79.8	92.8	347.4	360.4	376.3	411.7	463.8
8 Overall ATMs (All Svc.)	114.8	154.7	499.2	539.0	566.7	621.6	691.5
<b>YIELD &amp; UNIT COST &amp; PROFITS: (Cents)</b>							
9 Operating Revenue per RTM	164.8	131.3	137.9	130.2	131.6	120.8	110.8
10 Operating Expense per RTM	146.5	141.1	145.5	144.2	140.6	128.3	113.9
11 Operating Profit (Loss) per RTM	18.4	-9.9	-7.6	-13.9	-9.0	-7.5	-3.1
12 Operating Expense per ATM	101.9	84.7	101.3	96.4	93.4	85.0	76.4
13 Passenger Revenue per RPM	16.61	13.91	14.35	13.71	13.81	12.54	11.40
<b>FINANCIAL RATIOS:</b>							
14 Operating Revenues to Total Investment	*	*	0.89	0.79	0.79	0.72	0.69
15 Times Interest Earned	*	*	-1.59	-2.72	-1.63	-4.42	-3.85
16 Current Assets to Current Liabilities	*	*	1.05	0.97	0.72	1.72	0.21
17 No. of Days Cash Coverage of Cash Exp.	*	*	0.0	0.0	0.0	0.0	0.0
<b>FINANCIAL PERCENTAGES: (%)</b>							
18 Operating Profit (Loss) to Operating Revenue	11.1	-7.5	-5.5	-10.7	-6.9	-6.2	-2.8
19 Net Income to Stockholders Equity	*	*	-1,113.30	-657.40	-329.11	-306.80	-168.10
20 Corporate Return on Investment	*	*	-13.4	-21.8	-12.1	-28.6	-21.1
21 Debt to Total Investment	*	*	107.7	112.0	98.0	94.3	87.6
<b>PASSENGER LOAD FACTOR: (Sch. Svc. %)</b>							
22 Actual	82.2	82.1	83.8	83.7	84.6	85.2	86.5
23 Breakeven	72.0	89.0	88.9	93.7	91.0	91.2	89.2
<b>Employment &amp; Productivity:</b>							
24 Employment, Total Weighted Avg CY	2,131	2,379	2,225	2,287	2,334	2,384	2,471
25 Overall RTM's per Employee (000)	37.5	39.0	156.1	157.6	161.2	172.7	187.7
<b>CHANGE OVER COMPARABLE PERIOD 12 MONTHS EARLIER</b>							
26 Operating Revenues (%)	8.0	4.7	-6.8	-7.7	-1.9	-3.3	1.8
27 Operating Expenses (%)	-10.8	4.6	-4.3	-0.6	-0.5	-4.6	-6.3
28 Operating Profit (Loss) (in Millions \$)	23.8	-0.3	-11.9	-36.0	-7.0	8.2	44.7
29 Net Income (Loss) (in Millions \$)	59.6	17.5	80.3	38.2	98.2	-152.9	-115.2
30 RPMs (Sch. Svc.) (%)	-9.6	-34.4	-25.9	-31.1	-37.5	-38.5	-33.7
31 ASMs (Sch. Svc.) (%)	-9.7	-34.8	-23.5	-29.3	-37.1	-39.8	-36.7
32 Operating Revenues per RTM (%)	25.6	52.0	24.5	29.5	51.6	53.1	50.6
33 Operating Expense per RTM (%)	3.8	51.9	27.7	39.5	53.8	51.1	38.6
34 Passenger Revenue per RPM (Sch. Svc.)(%)	19.4	59.6	25.9	34.0	57.0	57.2	53.5

# QUARTERLY FINANCIAL & TRAFFIC REVIEW

## SYSTEM OPERATIONS

### Piedmont Airlines (PT)^

Items	Quarter Ended		12 Months Ended				
	2024 q1	2023 q1	2024 q1	2023 q4	2023 q3	2023 q2	2023 q1
<b>FINANCIAL RESULTS: (\$Millions)</b>							
1 Operating Revenues	201.4	186.7	774.9	760.2	748.9	733.0	704.7
2 Operating Expenses	192.5	182.9	767.2	757.6	738.8	720.9	692.1
3 Operating Profit (Loss)	8.8	3.7	7.7	2.6	10.1	12.1	12.6
4 Net Income (Loss)	7.3	3.2	7.6	3.5	9.2	11.5	12.0
<b>TRAFFIC: (Thousands)</b>							
5 RPMs - Scheduled Rev. Svc.	317.4	274.0	1,323.5	1,280.0	1,189.1	1,121.1	1,068.5
6 ASMs - Scheduled Rev. Svc.	380.1	349.5	1,559.7	1,529.1	1,433.9	1,356.3	1,291.5
7 Overall RTMs (All Svc.)	31.8	27.4	132.4	128.1	119.0	112.2	106.9
8 Overall ATMs (All Svc.)	50.2	46.3	206.0	202.1	189.3	178.7	169.8
<b>YIELD &amp; UNIT COST &amp; PROFITS: (Cents)</b>							
9 Operating Revenue per RTM	633.9	681.0	585.2	593.6	629.4	653.5	659.2
10 Operating Expense per RTM	606.1	667.3	579.3	591.5	621.0	642.7	647.4
11 Operating Profit (Loss) per RTM	27.8	13.6	5.8	2.0	8.5	10.8	11.8
12 Operating Expense per ATM	383.2	395.0	372.4	374.9	390.2	403.4	407.7
13 Passenger Revenue per RPM	34.99	38.39	32.52	33.16	35.01	36.08	35.29
<b>FINANCIAL RATIOS:</b>							
14 Operating Revenues to Total Investment	*	*	28.52	30.54	33.72	39.31	48.41
15 Times Interest Earned	*	*					
16 Current Assets to Current Liabilities	*	*	1.08	0.97	1.06	1.05	1.02
17 No. of Days Cash Coverage of Cash Exp.	*	*	0.9	0.8	0.4	0.8	0.8
<b>FINANCIAL PERCENTAGES: (%)</b>							
18 Operating Profit (Loss) to Operating Revenue	4.4	2.0	1.0	0.3	1.3	1.6	1.8
19 Net Income to Stockholders Equity	*	*	28.01	14.12	41.25	61.70	82.13
20 Corporate Return on Investment	*	*	28.0	14.1	41.2	61.7	82.1
21 Debt to Total Investment	*	*					
<b>PASSENGER LOAD FACTOR: (Sch. Svc. %)</b>							
22 Actual	83.5	78.4	84.9	83.7	82.9	82.7	82.7
23 Breakeven	76.1	75.3	83.2	83.1	80.7	79.9	79.7
<b>Employment &amp; Productivity:</b>							
24 Employment, Total Weighted Avg CY	7,662	7,547	7,611	7,583	7,586	6,889	6,765
25 Overall RTM's per Employee (000)	4.1	3.6	17.4	16.9	15.7	16.3	15.8
<b>CHANGE OVER COMPARABLE PERIOD 12 MONTHS EARLIER</b>							
26 Operating Revenues (%)	7.9	24.0	10.0	13.7	15.1	25.7	35.9
27 Operating Expenses (%)	5.2	20.3	10.8	14.6	15.1	16.0	14.4
28 Operating Profit (Loss) (in Millions \$)	5.1	5.3	-4.9	-4.7	1.1	50.3	99.2
29 Net Income (Loss) (in Millions \$)	4.1	4.2	-4.3	-4.3	0.4	12.1	13.4
30 RPMs (Sch. Svc.) (%)	15.9	5.3	23.9	21.4	5.0	-6.2	-13.5
31 ASMs (Sch. Svc.) (%)	8.8	1.8	20.8	19.0	3.9	-7.2	-15.5
32 Operating Revenues per RTM (%)	-6.9	17.8	-11.2	-6.3	9.6	34.0	57.3
33 Operating Expense per RTM (%)	-9.2	14.2	-10.5	-5.6	9.7	23.7	32.3
34 Passenger Revenue per RPM (Sch. Svc.)(%)	-8.9	28.5	-7.9	0.0	16.9	41.3	64.7

# QUARTERLY FINANCIAL & TRAFFIC REVIEW

## SYSTEM OPERATIONS

### PSA Airlines Inc. (OH)

Items	Quarter Ended		12 Months Ended				
	2024 q1	2023 q1	2024 q1	2023 q4	2023 q3	2023 q2	2023 q1
<b>FINANCIAL RESULTS: (\$Millions)</b>							
1 Operating Revenues	264.1	241.1	1,019.6	996.6	969.8	970.0	941.6
2 Operating Expenses	260.6	242.3	1,030.9	1,012.6	990.0	995.5	974.2
3 Operating Profit (Loss)	3.5	-1.2	-11.3	-16.0	-20.2	-25.4	-32.6
4 Net Income (Loss)	-1.7	-3.9	-26.4	-28.6	-23.6	-28.1	-31.2
<b>TRAFFIC: (Thousands)</b>							
5 RPMs - Scheduled Rev. Svc.	1,270.1	1,053.0	5,213.0	4,995.8	4,837.9	4,807.6	4,937.6
6 ASMs - Scheduled Rev. Svc.	1,574.0	1,387.9	6,298.4	6,112.4	5,966.7	5,932.6	6,049.5
7 Overall RTMs (All Svc.)	127.0	105.3	521.4	499.7	483.9	480.9	493.9
8 Overall ATMs (All Svc.)	227.8	196.0	909.5	877.7	851.9	841.0	852.4
<b>YIELD &amp; UNIT COST &amp; PROFITS: (Cents)</b>							
9 Operating Revenue per RTM	207.9	228.9	195.5	199.4	200.4	201.7	190.7
10 Operating Expense per RTM	205.1	230.0	197.7	202.6	204.6	207.0	197.3
11 Operating Profit (Loss) per RTM	2.8	-1.1	-2.2	-3.2	-4.2	-5.3	-6.6
12 Operating Expense per ATM	114.4	123.6	113.4	115.4	116.2	118.4	114.3
13 Passenger Revenue per RPM	20.80	22.90	19.56	19.95	20.05	20.18	19.07
<b>FINANCIAL RATIOS:</b>							
14 Operating Revenues to Total Investment	*	*	-4.35	-4.36	-4.39	-4.52	-4.55
15 Times Interest Earned	*	*	-0.74	-1.09	-1.44	-2.24	-4.27
16 Current Assets to Current Liabilities	*	*	0.34	0.31	0.29	0.30	0.30
17 No. of Days Cash Coverage of Cash Exp.	*	*	0.4	0.4	0.1	3.3	0.2
<b>FINANCIAL PERCENTAGES: (%)</b>							
18 Operating Profit (Loss) to Operating Revenue	1.3	-0.5	-1.1	-1.6	-2.1	-2.6	-3.5
19 Net Income to Stockholders Equity	*	*	11.24	12.50	10.69	13.08	15.06
20 Corporate Return on Investment	*	*	3.3	5.1	4.0	7.6	11.2
21 Debt to Total Investment	*	*					
<b>PASSENGER LOAD FACTOR: (Sch. Svc. %)</b>							
22 Actual	80.7	75.9	82.8	81.7	81.1	81.0	81.6
23 Breakeven	79.5	76.3	83.8	83.2	83.0	83.4	84.8
<b>Employment &amp; Productivity:</b>							
24 Employment, Total Weighted Avg CY	4,332	4,106	4,144	4,088	4,089	4,136	4,232
25 Overall RTM's per Employee (000)	29.3	25.7	125.8	122.2	118.3	116.3	116.7
<b>CHANGE OVER COMPARABLE PERIOD 12 MONTHS EARLIER</b>							
26 Operating Revenues (%)	9.6	8.1	8.3	7.9	5.2	16.2	20.7
27 Operating Expenses (%)	7.6	3.6	5.8	4.8	2.5	6.9	7.4
28 Operating Profit (Loss) (in Millions \$)	4.7	9.6	21.2	26.1	23.5	70.6	94.1
29 Net Income (Loss) (in Millions \$)	2.2	5.1	4.8	7.8	15.7	26.9	17.6
30 RPMs (Sch. Svc.) (%)	20.6	-17.1	5.6	-3.1	-13.0	-17.0	-14.2
31 ASMs (Sch. Svc.) (%)	13.4	-19.9	4.1	-4.4	-13.8	-18.1	-17.1
32 Operating Revenues per RTM (%)	-9.2	30.3	2.6	11.3	20.9	40.0	40.7
33 Operating Expense per RTM (%)	-10.8	24.9	0.2	8.2	17.8	28.8	25.3
34 Passenger Revenue per RPM (Sch. Svc.)(%)	-9.2	30.3	2.6	11.3	20.9	40.0	40.7

# QUARTERLY FINANCIAL & TRAFFIC REVIEW

## SYSTEM OPERATIONS

### Silver Airways (3M)^

Items	Quarter Ended		12 Months Ended			
	2024 q1		2024 q1			
<b>FINANCIAL RESULTS: (\$Millions)</b>						
1 Operating Revenues	27.0		27.0			
2 Operating Expenses	33.7		33.7			
3 Operating Profit (Loss)	-6.7		-6.7			
4 Net Income (Loss)	-20.3		-20.3			
<b>TRAFFIC: (Thousands)</b>						
5 RPMs - Scheduled Rev. Svc.	39.3		39.3			
6 ASMs - Scheduled Rev. Svc.	78.4		78.4			
7 Overall RTMs (All Svc.)	3.9		3.9			
8 Overall ATMs (All Svc.)	9.2		9.2			
<b>YIELD &amp; UNIT COST &amp; PROFITS: (Cents)</b>						
9 Operating Revenue per RTM	686.2		686.2			
10 Operating Expense per RTM	857.6		857.6			
11 Operating Profit (Loss) per RTM	-171.3		-171.3			
12 Operating Expense per ATM	366.0		366.0			
13 Passenger Revenue per RPM	56.38		56.38			
<b>FINANCIAL RATIOS:</b>						
14 Operating Revenues to Total Investment	*	*	1.65			
15 Times Interest Earned	*	*	-0.59			
16 Current Assets to Current Liabilities	*	*	1.04			
17 No. of Days Cash Coverage of Cash Exp.	*	*	8.1			
<b>FINANCIAL PERCENTAGES: (%)</b>						
18 Operating Profit (Loss) to Operating Revenue	-25.0		-25.0			
19 Net Income to Stockholders Equity	*	*	34.36			
20 Corporate Return on Investment	*	*	-45.9			
21 Debt to Total Investment	*	*	459.4			
<b>PASSENGER LOAD FACTOR: (Sch. Svc. %)</b>						
22 Actual	50.2		50.2			
23 Breakeven	67.1		67.1			
<b>Employment &amp; Productivity:</b>						
24 Employment, Total Weighted Avg CY	664		166			
25 Overall RTM's per Employee (000)	5.9		23.7			
<b>CHANGE OVER COMPARABLE PERIOD 12 MONTHS EARLIER</b>						
26 Operating Revenues (%)						
27 Operating Expenses (%)						
28 Operating Profit (Loss) (in Millions \$)						
29 Net Income (Loss) (in Millions \$)						
30 RPMs (Sch. Svc.) (%)						
31 ASMs (Sch. Svc.) (%)						
32 Operating Revenues per RTM (%)						
33 Operating Expense per RTM (%)						
34 Passenger Revenue per RPM (Sch. Svc.)(%)						

# QUARTERLY FINANCIAL & TRAFFIC REVIEW

## SYSTEM OPERATIONS

### Sun Country Airlines d/b/a MN Airlines (SY)^

Items	Quarter Ended		12 Months Ended				
	2024 q1	2023 q1	2024 q1	2023 q4	2023 q3	2023 q2	2023 q1
<b>FINANCIAL RESULTS: (\$Millions)</b>							
1 Operating Revenues	311.5	294.1	1,067.0	1,049.6	1,031.2	1,004.1	962.0
2 Operating Expenses	256.3	238.3	940.1	922.1	905.7	882.2	872.4
3 Operating Profit (Loss)	55.2	55.8	126.9	127.5	125.5	121.9	89.7
4 Net Income (Loss)	35.2	38.7	69.4	72.9	74.1	76.5	51.9
<b>TRAFFIC: (Thousands)</b>							
5 RPMs - Scheduled Rev. Svc.	1,652.4	1,429.7	5,435.7	5,213.0	5,037.9	4,886.1	4,796.2
6 ASMs - Scheduled Rev. Svc.	1,890.3	1,622.7	6,304.6	6,037.1	5,836.1	5,646.1	5,571.9
7 Overall RTMs (All Svc.)	215.5	193.5	769.4	747.4	723.9	700.7	682.0
8 Overall ATMs (All Svc.)	346.6	314.5	1,291.7	1,259.5	1,226.6	1,193.9	1,166.5
<b>YIELD &amp; UNIT COST &amp; PROFITS: (Cents)</b>							
9 Operating Revenue per RTM	144.5	152.0	138.7	140.4	142.5	143.3	141.1
10 Operating Expense per RTM	118.9	123.2	122.2	123.4	125.1	125.9	127.9
11 Operating Profit (Loss) per RTM	25.6	28.8	16.5	17.1	17.3	17.4	13.1
12 Operating Expense per ATM	74.0	75.8	72.8	73.2	73.8	73.9	74.8
13 Passenger Revenue per RPM	9.80	11.97	9.38	9.96	10.47	10.86	10.96
<b>FINANCIAL RATIOS:</b>							
14 Operating Revenues to Total Investment	*	*	0.80	0.80	0.79	0.78	0.77
15 Times Interest Earned	*	*	3.02	3.23	3.46	3.79	3.15
16 Current Assets to Current Liabilities	*	*	0.61	0.65	0.70	0.79	0.89
17 No. of Days Cash Coverage of Cash Exp.	*	*	74.2	89.6	84.8	114.5	121.3
<b>FINANCIAL PERCENTAGES: (%)</b>							
18 Operating Profit (Loss) to Operating Revenue	17.7	19.0	11.9	12.1	12.2	12.1	9.3
19 Net Income to Stockholders Equity	*	*	13.16	14.09	14.35	14.94	10.33
20 Corporate Return on Investment	*	*	8.6	8.8	8.7	8.7	6.7
21 Debt to Total Investment	*	*	60.1	60.9	61.3	60.4	59.9
<b>PASSENGER LOAD FACTOR: (Sch. Svc. %)</b>							
22 Actual	87.4	88.1	86.2	86.4	86.3	86.5	86.1
23 Breakeven	76.8	68.0	87.0	83.9	81.3	78.9	80.3
<b>Employment &amp; Productivity:</b>							
24 Employment, Total Weighted Avg CY	2,524	2,269	2,434	2,371	2,306	2,226	2,137
25 Overall RTM's per Employee (000)	85.4	85.3	316.1	315.2	313.9	314.8	319.1
<b>CHANGE OVER COMPARABLE PERIOD 12 MONTHS EARLIER</b>							
26 Operating Revenues (%)	5.9	29.8	10.9	17.3	22.8	26.8	33.3
27 Operating Expenses (%)	7.5	16.4	7.8	9.9	14.8	20.1	32.5
28 Operating Profit (Loss) (in Millions \$)	-0.6	34.0	37.2	71.8	74.7	64.5	26.2
29 Net Income (Loss) (in Millions \$)	-3.5	35.1	17.4	56.1	65.6	64.2	-16.3
30 RPMs (Sch. Svc.) (%)	15.6	7.0	13.3	10.8	12.5	11.5	14.9
31 ASMs (Sch. Svc.) (%)	16.5	-3.5	13.1	7.2	6.7	2.6	4.0
32 Operating Revenues per RTM (%)	-4.9	16.7	-1.7	4.0	8.0	11.9	15.2
33 Operating Expense per RTM (%)	-3.5	4.7	-4.5	-2.5	1.0	6.0	14.5
34 Passenger Revenue per RPM (Sch. Svc.)(%)	-18.2	14.1	-14.4	-5.3	0.7	7.7	15.2

# QUARTERLY FINANCIAL & TRAFFIC REVIEW

## SYSTEM OPERATIONS

### TEM Enterprises dba Avelo Airlines (XP)^

Items	Quarter Ended		12 Months Ended			
	2024 q1		2024 q1			
<b>FINANCIAL RESULTS: (\$Millions)</b>						
1 Operating Revenues	79.8		79.8			
2 Operating Expenses	79.0		79.0			
3 Operating Profit (Loss)	0.8		0.8			
4 Net Income (Loss)	0.7		0.7			
<b>TRAFFIC: (Thousands)</b>						
5 RPMs - Scheduled Rev. Svc.	429.5		429.5			
6 ASMs - Scheduled Rev. Svc.	602.9		602.9			
7 Overall RTMs (All Svc.)	46.5		46.5			
8 Overall ATMs (All Svc.)	81.3		81.3			
<b>YIELD &amp; UNIT COST &amp; PROFITS: (Cents)</b>						
9 Operating Revenue per RTM	171.5		171.5			
10 Operating Expense per RTM	169.7		169.7			
11 Operating Profit (Loss) per RTM	1.7		1.7			
12 Operating Expense per ATM	97.2		97.2			
13 Passenger Revenue per RPM	9.96		9.96			
<b>FINANCIAL RATIOS:</b>						
14 Operating Revenues to Total Investment	*	*	-9.03			
15 Times Interest Earned	*	*	16.29			
16 Current Assets to Current Liabilities	*	*	0.20			
17 No. of Days Cash Coverage of Cash Exp.	*	*	25.2			
<b>FINANCIAL PERCENTAGES: (%)</b>						
18 Operating Profit (Loss) to Operating Revenue	1.0		1.0			
19 Net Income to Stockholders Equity	*	*	-3.68			
20 Corporate Return on Investment	*	*	-9.0			
21 Debt to Total Investment	*	*	-130.9			
<b>PASSENGER LOAD FACTOR: (Sch. Svc. %)</b>						
22 Actual	71.2		71.2			
23 Breakeven	114.2		114.2			
<b>Employment &amp; Productivity:</b>						
24 Employment, Total Weighted Avg CY	786		196			
25 Overall RTM's per Employee (000)	59.2		237.4			
<b>CHANGE OVER COMPARABLE PERIOD 12 MONTHS EARLIER</b>						
26 Operating Revenues (%)						
27 Operating Expenses (%)						
28 Operating Profit (Loss) (in Millions \$)						
29 Net Income (Loss) (in Millions \$)						
30 RPMs (Sch. Svc.) (%)						
31 ASMs (Sch. Svc.) (%)						
32 Operating Revenues per RTM (%)						
33 Operating Expense per RTM (%)						
34 Passenger Revenue per RPM (Sch. Svc.)(%)						



## Comparison of Operating Profit (Loss)

### For Individual System Passenger Nationals

#### 2023 q1 Compared To 2024 q1

Operating Profit (Loss) (\$Millions)						
	Quarterly Data			12 Months Ended Data		
	2023 q1	2024 q1	\$ Chg	YE 2023 q1	YE 2024 q1	\$ Chg
<b>System Passenger Nationals</b>	-48.4	-4.3	44.0	-291.2	-189.6	101.6
Air Wisconsin Airlines Corp (ZW)^	-3.9			0.9		
Breeze Aviation Group DBA Breeze (MX)^		-27.1			-27.1	
CommuteAir LLC dba CommuteAir (C5)^	1.5	3.1	1.5	10.3	8.4	-1.9
Endeavor Air Inc. (9E)	-90.4	-78.7	11.8	-318.7	-331.5	-12.7
GoJet Airlines LLC d/b/a United Express (G7)	1.9	-1.1	-2.9	7.3	4.2	-3.1
Horizon Air (QX)	-6.7	23.2	29.8	-46.1	65.4	111.6
Mesa Airlines Inc. (YV)	-9.2	14.7	23.8	-14.5	-26.4	-11.9
Piedmont Airlines (PT)^	3.7	8.8	5.1	12.6	7.7	-4.9
PSA Airlines Inc. (OH)	-1.2	3.5	4.7	-32.6	-11.3	21.2
Silver Airways (3M)^		-6.7			-6.7	
Sun Country Airlines d/b/a MN Airlines (SY)^	55.8	55.2	-0.6	89.7	126.9	37.2
TEM Enterprises dba Avelo Airlines (XP)^		0.8			0.8	

**Comparison of Net Income (Loss)**  
**For Individual System Passenger Nationals**  
**2023 q1 Compared To 2024 q1**

	<b>Net Income (Loss) (\$Millions)</b>					
	<b>Quarterly Data</b>			<b>12 Months Ended Data</b>		
	<b>2023 q1</b>	<b>2024 q1</b>	<b>\$ Chg</b>	<b>YE 2023 q1</b>	<b>YE 2024 q1</b>	<b>\$ Chg</b>
<b>System Passenger Nationals</b>	<b>-100.8</b>	<b>-50.7</b>	<b>50.1</b>	<b>-513.6</b>	<b>-417.4</b>	<b>96.2</b>
Air Wisconsin Airlines Corp (ZW)^	-1.9			1.8		
Breeze Aviation Group DBA Breeze (MX)^		-28.1			-28.1	
CommuteAir LLC dba CommuteAir (C5)^	1.3	3.2	1.8	8.8	9.0	0.2
Endeavor Air Inc. (9E)	-90.3	-76.8	13.5	-318.3	-326.5	-8.2
GoJet Airlines LLC d/b/a United Express (G7)	1.7	-1.0	-2.7	7.8	4.2	-3.6
Horizon Air (QX)	-11.4	9.5	20.9	-49.3	9.7	59.0
Mesa Airlines Inc. (YV)	-38.2	21.4	59.6	-197.1	-116.7	80.3
Piedmont Airlines (PT)^	3.2	7.3	4.1	12.0	7.6	-4.3
PSA Airlines Inc. (OH)	-3.9	-1.7	2.2	-31.2	-26.4	4.8
Silver Airways (3M)^		-20.3			-20.3	
Sun Country Airlines d/b/a MN Airlines (SY)^	38.7	35.2	-3.5	51.9	69.4	17.4
TEM Enterprises dba Avelo Airlines (XP)^		0.7			0.7	

**Comparison of Passenger Load Factors**  
**For Individual System Passenger Nationals**  
**2023 q1 Compared To 2024 q1**

<b>Passenger Load Factor (Percent)</b>						
	<b>Quarterly Data</b>			<b>12 Months Ended Data</b>		
	<b>2023 q1</b>	<b>2024 q1</b>	<b>Pt Chg</b>	<b>YE 2023 q1</b>	<b>YE 2024 q1</b>	<b>Pt Chg</b>
<b>System Passenger Nationals</b>	<b>80.1</b>	<b>80.7</b>	<b>0.6</b>	<b>83.0</b>	<b>83.3</b>	<b>0.3</b>
Air Wisconsin Airlines Corp (ZW)^	82.2			85.7		
Breeze Aviation Group DBA Breeze (MX)^		77.2			77.2	
CommuteAir LLC dba CommuteAir (C5)^	84.1	85.3	1.3	84.8	86.8	2.0
Endeavor Air Inc. (9E)	74.1	77.3	3.2	79.5	82.1	2.5
GoJet Airlines LLC d/b/a United Express (G7)	75.9	84.0	8.1	78.6	84.5	6.0
Horizon Air (QX)	79.0	82.1	3.1	81.1	83.3	2.3
Mesa Airlines Inc. (YV)	82.1	82.2	0.1	86.5	83.8	-2.7
Piedmont Airlines (PT)^	78.4	83.5	5.1	82.7	84.9	2.1
PSA Airlines Inc. (OH)	75.9	80.7	4.8	81.6	82.8	1.1
Silver Airways (3M)^		50.2			50.2	
Sun Country Airlines d/b/a MN Airlines (SY)^	88.1	87.4	-0.7	86.1	86.2	0.1
TEM Enterprises dba Avelo Airlines (XP)^		71.2			71.2	

**Comparison of Passenger Yields (Cents)**  
**For Individual System Passenger Nationals**  
**2023 q1 Compared To 2024 q1**

	Passenger Yields (Cents)					
	Quarterly Data			12 Months Ended Data		
	2023 q1	2024 q1	% Chg	YE 2023 q1	YE 2024 q1	% Chg
<b>System Passenger Nationals</b>	<b>18.0</b>	<b>14.8</b>	<b>-17.7%</b>	<b>15.8</b>	<b>15.2</b>	<b>-4.1%</b>
Air Wisconsin Airlines Corp (ZW)^	29.9			24.0		
Breeze Aviation Group DBA Breeze (MX)^		6.2			6.2	
CommuteAir LLC dba CommuteAir (C5)^	21.2	20.9	-1.3%	20.6	19.8	-3.9%
Endeavor Air Inc. (9E)	12.5	9.7	-22.2%	11.6	9.7	-17.0%
GoJet Airlines LLC d/b/a United Express (G7)	41.1	38.3	-6.9%	37.6	37.5	-0.1%
Horizon Air (QX)	21.0	18.0	-14.4%	16.4	17.1	4.6%
Mesa Airlines Inc. (YV)	13.9	16.6	19.4%	11.4	14.3	25.9%
Piedmont Airlines (PT)^	38.4	35.0	-8.9%	35.3	32.5	-7.9%
PSA Airlines Inc. (OH)	22.9	20.8	-9.2%	19.1	19.6	2.6%
Silver Airways (3M)^		56.4			56.4	
Sun Country Airlines d/b/a MN Airlines (SY)^	12.0	9.8	-18.2%	11.0	9.4	-14.4%
TEM Enterprises dba Avelo Airlines (XP)^		10.0			10.0	

## Comparison of Operating Profit Margin (Percent)

### For Individual System Passenger Nationals

### 2023 q1 Compared To 2024 q1

	Operating Profit Margin (Percent)					
	Quarterly Data			12 Months Ended Data		
	2023 q1	2024 q1	Pt Chg	YE 2023 q1	YE 2024 q1	Pt Chg
<b>System Passenger Nationals</b>	<b>-3.9</b>	<b>-0.3</b>	<b>3.6</b>	<b>-6.0</b>	<b>-4.1</b>	<b>1.9</b>
Air Wisconsin Airlines Corp (ZW)^	-6.5			0.4		
Breeze Aviation Group DBA Breeze (MX)^		-18.6			-18.6	
CommuteAir LLC dba CommuteAir (C5)^	2.3	5.1	2.8	3.7	3.5	-0.2
Endeavor Air Inc. (9E)	-62.1	-57.3	4.9	-50.9	-59.8	-9.0
GoJet Airlines LLC d/b/a United Express (G7)	3.3	-1.8	-5.0	3.1	1.8	-1.3
Horizon Air (QX)	-8.6	22.3	30.9	-13.4	16.3	29.8
Mesa Airlines Inc. (YV)	-7.5	11.1	18.7	-2.8	-5.5	-2.7
Piedmont Airlines (PT)^	2.0	4.4	2.4	1.8	1.0	-0.8
PSA Airlines Inc. (OH)	-0.5	1.3	1.8	-3.5	-1.1	2.3
Silver Airways (3M)^		-25.0			-25.0	
Sun Country Airlines d/b/a MN Airlines (SY)^	19.0	17.7	-1.3	9.3	11.9	2.6
TEM Enterprises dba Avelo Airlines (XP)^		1.0			1.0	

## Comparison of Debt-to-Investment and Total Debt

### For Individual System Passenger Nationals

### 2023 q1 Compared To 2024 q1

	Debt To Investment (Percent)			Total Debt (\$Millions)		
	Quarterly Data			Quarterly Data		
	2023 q1	2024 q1	Pt Chg	2023 q1	2024 q1	\$ Chg
<b>System Passenger Nationals</b>	<b>64.0</b>	<b>92.3</b>	<b>28.4</b>	<b>1,796.6</b>	<b>3,404.5</b>	<b>1,607.9</b>
Air Wisconsin Airlines Corp (ZW)^	31.9			65.0		
Breeze Aviation Group DBA Breeze (MX)^		112.7			858.1	
CommuteAir LLC dba CommuteAir (C5)^	104.8	88.4	-16.4	28.6	28.9	0.4
Endeavor Air Inc. (9E)	4.1	4.9	0.8	7.2	8.5	1.3
GoJet Airlines LLC d/b/a United Express (G7)	168.3	104.1	-64.3	35.1	257.6	222.4
Horizon Air (QX)	46.1	64.9	18.8	263.8	595.5	331.7
Mesa Airlines Inc. (YV)	87.6	107.7	20.1	617.9	405.4	-212.5
Silver Airways (3M)^		459.4			376.8	
Sun Country Airlines d/b/a MN Airlines (SY)^	59.9	60.1	0.2	779.1	815.9	36.9
TEM Enterprises dba Avelo Airlines (XP)^		-130.9			57.8	

# ENDNOTES

- \* Not Calculated on a quarterly basis.
- \*\* Cannot be calculated because balance sheet data not submitted on an entity basis. Data presented only on a system basis.
- ++ Not calculated for all-cargo carriers.
- & Meaningful calculation cannot be made.
- ^ Carrier specific note. See below.

## **Air Wisconsin Airlines Corp (ZW)**

Air Wisconsin (ZW) has been delayed in their 2024q1 financial submission. They will be restating all financials from 2022q1 forward.

## **Breeze Aviation Group DBA Breeze (MX)**

Effective 2024q1, Breeze Aviation Group DBA Breeze (MX) began reporting as a Group II National. All Form 41 Traffic and Financial Data collected by the Department for Breeze are included in this report.

## **CommuteAir LLC dba CommuteAir (C5)**

Effective 2020q4, Commutair Aka Champlain Enterprises, Inc. (C5) began reporting as a Group II National. All Form 41 Traffic and Financial Data collected by the Department for Commutair are included in this report.

## **Compass Airlines (CP)**

Effective 2020q2, Compass Airlines (CP) ceased all operations. All Form 41 Traffic and Financial Data collected by the Department for Compass Airlines are included in this report.

## **Elite Airways LLC (2HQ)**

Effective 2020q1, Elite Airways LLC (2HQ) began reporting as a Group II National. Effective 2022q3, Elite Airways LLC (2HQ) ceased all operations. All Form 41 Traffic and Financial Data collected by the Department for Elite Airways are included in this report.

## **ExpressJet Airlines LLC d/b/a aha! (EV)**

Effective 2020q4, ExpressJet Airlines LCC (EV) ceased all operations. All Form 41 Traffic and Financial Data collected by the Department for ExpressJet are included in this report.

## **Piedmont Airlines (PT)**

Effective 2021q1, Piedmont Airlines (PT) began reporting as a Group II National. All Form 41 Traffic and Financial Data collected by the Department for Piedmont Airlines are included in this report.

## **Silver Airways (3M)**

Effective 2024q1, Silver Airways (3M) began reporting as a Group II National. All Form 41 Traffic and Financial Data collected by the Department for Silver Airways are included in this report.

## **Sun Country Airlines d/b/a MN Airlines (SY)**

Effective 2024q1, Sun Country Airlines d/b/a MN Airlines (SY) began reporting as a Group III Major. All Form 41 Traffic and Financial Data collected by the Department for Sun Country Airlines are included in this report.

## **TEM Enterprises dba Avelo Airlines (XP)**

Effective 2024q1, TEM Enterprises dba Avelo Airlines (XP) began reporting as a Group II National. All Form 41 Traffic and Financial Data collected by the Department for Avelo Airlines are included in this report.

# Carrier List

## Passenger

ZW^	Air Wisconsin Airlines Corp
MX^	Breeze Aviation Group DBA Breeze
C5^	CommuteAir LLC dba CommuteAir
CP^	Compass Airlines
2HQ^	Elite Airways LLC
9E	Endeavor Air Inc.
EV^	ExpressJet Airlines LLC d/b/a aha!
G7	GoJet Airlines LLC d/b/a United Express
QX	Horizon Air
YV	Mesa Airlines Inc.
PT^	Piedmont Airlines
OH	PSA Airlines Inc.
3M^	Silver Airways
SY^	Sun Country Airlines d/b/a MN Airlines
XP^	TEM Enterprises dba Avelo Airlines



**Explanation of Line Items**

Line #	Reported By	Description of Line Item	Line Item Derivation
			<b>FINANCIAL RESULTS: (\$Millions)</b>
1	All	Operating Revenues	Total Operating Revenues (P012 Account 49990)
2	All	Operating Expenses	Total Operating Expenses (P012 Account 71990)
3	All	Operating Profit (Loss)	Operating Profit Or Loss (P012 Account 79990)
4	All	Net Income (Loss)	Net Income (P012 Account 98990)
			<b>TRAFFIC: (Billions)</b>
5	Combi Only	RPMS - Scheduled Rev. Svc.	Scheduled Revenue Passenger Miles (T100_K_RPM_140)
	Cargo Only	RTMs - Scheduled Rev. Svc.	Scheduled Revenue Ton Miles (T100_K_RTM_240)
6	Combi Only	ASMs - Scheduled Rev. Svc.	Scheduled Available Passenger Miles (T100_K_ASM_320)
	Cargo Only	ATMs - Scheduled Rev. Svc.	Scheduled Available Ton Miles (T100_K_ATM_280)
7	All	RTMs (All Svc.)	RTMs (All Svc.) (T100_Z_RTM_240)
8	All	ATMs (All Svc.)	ATMs (All Svc.) (T100_Z_ATM_280)
			<b>YIELD &amp; UNIT COST &amp; PROFITS: (Cents)</b>
9	All	Operating Revenue per RTM	<u>Operating Revenues (P012 Account 49990)</u> All Services Revenue Ton-Miles (T100_Z_RTM_240)
10	All	Operating Expense per RTM	<u>Operating Expenses (P012 Account 71990)</u> All Services Revenue Ton-Miles (T100_Z_RTM_240)
11	All	Operating Profit (Loss) per RTM	<u>Operating Profit (P012 Account 79990)</u> All Services Revenue Ton-Miles (T100_Z_RTM_240)
12	All	Operating Expense per ATM	<u>Operating Expenses (P012 Account 71990)</u> All Services Available Ton-Miles (T100_Z_ATM_280)
13	All	Passenger Revenue per RPM	<u>Passenger Revenues (schd service) (P012 Account 39010)</u> Scheduled Revenue Passenger Miles (T100_K_RPM_140)

**Explanation of Line Items**

Line #	Reported By	Description of Line Item	Line Item Derivation
			<b>FINANCIAL RATIOS:</b>
14	All	Operating Revenues to Total Investment	<u>Total Operating Revenues (P012 Account 49990)</u> (Current Maturities of Long-Term Debt (B010 Account 20000) + Current Obligations Under Capital Leases (B010 Account 20800) + Long-Term Debt (B010 Account 22100) + Advances from Associated Companies (B010 Account 22400) + Noncurrent Obligations Under Capital Leases (B010 Account 22800) + Net Stockholders' Equity (B010 Account 29950) (A five-quarter average is used)
15	All	Times Interest Earned	Income Before Income Tax (P012 Account 89990) + Interest on Long-Term Debt and Capital Leases <u>(P012 Account 81810) + Other Interest Expense (P012 Account 81820)</u> Interest On Long-Term Debt and Capital Leases (P012 Account 81810) + Other Interest Expense (P012 Account 81820)
16	All	Current Assets to Current Liabilities	<u>Total Current Assets (B010 Account 14990)</u> Total Current Liabilities (B010 Account 21990)
17	All	No. of Days Cash Coverage of Cash Exp.	<u>Cash (B010 Account 10100) + Short Term Investments (B010 Account 11000)</u> (Total Operating Expenses (P012 Account 71990) + Depreciation And Amortization (B010 Account 70000) / 365
			<b>FINANCIAL PERCENTAGES:</b>
18	All	Operating Profit (Loss) to Operating Revenue	<u>Operating Profit Or Loss (P012 Account 79990)</u> Total Operating Revenues (P012 Account 49990)
19	All	Net Income to Stockholders Equity	<u>Net Income (P012 Account 98990)</u> Net Stockholders' Equity (B010 Account 29950)
20	All	Corporate Return on Investment	(Net Income minus Interest Expense) / Total Investment
		Corporate Return on Investment (Calculation Details)	Net Income (P012 Account 98990) - (Interest On Long Term Debt And Capital Leases <u>(P012 Account 81810) + Other Interest Expense (P012 Account 81820)</u> ) Current Maturities Of Long-Term Debt (B010 Account 20000) + Current Obligations Under Capital Leases (B010 Account 20800) + Long Term Debt (B010 Account 22100) + Advances From Associated Companies (B010 Account 22400) + Nonrecurrent Obligations Under Capital Leases (B010 Account 22800) + Net Stockholders' Equity (B010 Account 29950)
21	All	Debt to Total Investment	Current Maturities Of Long-Term Debt (B010 Account 20000) + Current Obligations Under Capital Leases (B010 Account 20800) + Long Term Debt (B010 Account 22100) + Advances From Associated Companies (B010 Account 22400) + <u>Nonrecurrent Obligations Under Capital Leases (B010 Account 22800)</u> Current Maturities Of Long-Term Debt (B010 Account 20000) + Current Obligations Under Capital Leases (B010 Account 20800) + Advances From Associated Companies (B010 Account 22400) + Nonrecurrent Obligations Under Capital Leases (B010 Account 22800) + Net Stockholders' Equity (B010 Account 29950) + Long Term Debt (B010 Account 22100)

**Explanation of Line Items**

Line #	Reported By	Description of Line Item	Line Item Derivation
			<b>LOAD FACTOR: (%)</b>
22	All	Actual Passenger Load Factor (Sch. Svc.)	$\frac{\text{Scheduled Revenue Passenger Miles (T100 K RPM 140)}}{\text{Scheduled Available Passenger Miles (T100 K_ASM_320)}}$
23	Combi Only	Breakeven Passenger Load Factor (Sch. Svc.)	$\frac{(\text{Total Operating Revenues (P012 Account 49990)} + \text{Transport Revenues Expenses (P012 Account 71000)} - (\text{Transport Revenues - Passenger (P012 Account 39010)} * .90) - \text{Total Operating Expenses (P012 Account 71990)} - \text{Transport Related Revenues (P012 Account 48980)}) * (\text{Scheduled Revenue Passenger Miles (T100 K RPM 140)} / \text{Scheduled Available Passenger Miles (T100 K_ASM_320)})}{(\text{Transport Revenues - Passenger (P012 Account 39010)} * .90)}$
	Cargo Only	Ton Load Factor (All Svc.)	$\frac{\text{Overall RTMs (All Svc.) (T100 Z RTM_240)}}{\text{Overall ATMs (All Svc.) (T100 Z_ATM_280)}}$
			<b>Employment &amp; Productivity:</b>
24	All	Employment, Total Weighted Avg CY	$\frac{((\text{P1a Account Z f99007}) + ((\text{P1a Account Z-f99008})/2))}{\text{Months in Period (3 Quarter; 12 Month Ended)}}$
25	All	Overall RTM's per Employee (000)	$\frac{\text{Overall RTMs (All Svc.) (T100 Z RTM_240)}}{((\text{P1a Account Z f99007}) + ((\text{P1a Account Z-f99008})/2)) / \text{Months in Period (3 Quarter; 12 Month Ended)}}$
			<b>Change Over Comparable Period 12 Month Earlier:</b>
26	All	Operating Revenues (%)	Total Operating Revenues (P012 Account 49990) (CY/PY)
27	All	Operating Expenses (%)	Total Operating Expenses (P012 Account 71990) (CY/PY)
28	All	Operating Profit (Loss) (in Millions \$)	Operating Profit Or Loss (P012 Account 79990) (CY/PY)
29	All	Net Income (Loss) (in Millions \$)	Net Income (P012 Account 98990) (CY/PY)
30	All	RPMS (Sch. Svc.) (%)	Scheduled Revenue Passenger Miles (T100_K_RPM_140) (CY/PY)
31	All	ASMs (Sch. Svc.) (%)	Scheduled Available Passenger Miles (T100_K_ASM_320) (CY/PY)
32	All	Operating Revenues per RTM (%)	$\frac{\text{Operating Revenues (P012 Account 49990)}}{\text{System Ton-Miles (T100_Z_RT M_240)} (CY/PY)}$
33	All	Operating Expense per RTM (%)	$\frac{\text{Operating expenses (P012 Account 71990)}}{\text{System Available Ton-Miles (T100_Z_ATM_280)} (CY/PY)}$
34	All	Passenger Revenue per RPM (Sch. Svc.) (%)	$\frac{\text{Passenger Revenues (schd service) (P012 Account 39010)}}{\text{Scheduled Revenue Passenger Miles (T100_K_RPM_140)} (CY/PY)}$