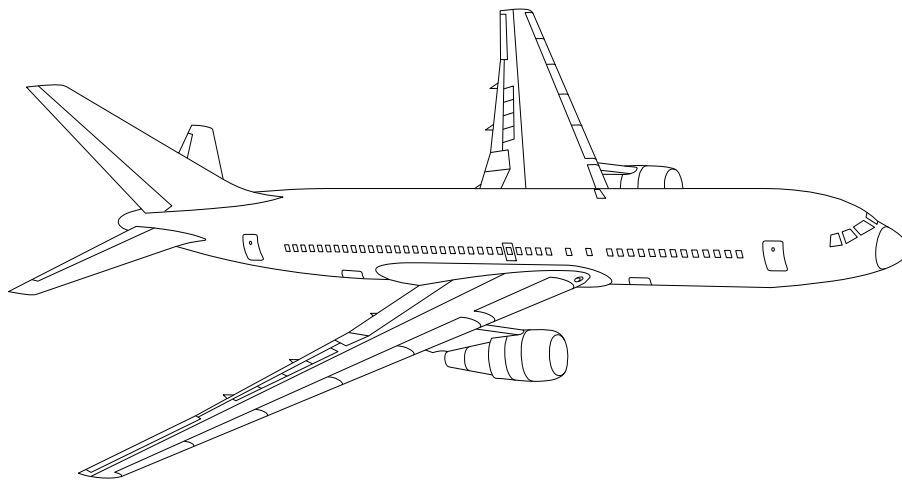


AIRLINE QUARTERLY FINANCIAL REVIEW

FIRST QUARTER 2024

MAJORS



**DEPARTMENT OF TRANSPORTATION
OFFICE OF AVIATION ANALYSIS:
COMPETITION AND POLICY ANALYSIS
DIVISION**

Table of Contents

INTRODUCTION.....	2
TOTAL SYSTEM PASSENGER & ALL-CARGO MAJORS	3
Chart 1. Operating Profit and Net Income (Loss) for the Quarter	6
Chart 2. Operating Profit and Net Income (Loss) for the Year Ended	6
Chart 3. Operating Profit (Loss) by Quarter	7
Chart 4. Net Income (Loss) by Quarter	7
Chart 5. Operating Profit (Loss) Year Ended by Quarter	8
Chart 6. Net Income (Loss) Year Ended by Quarter	8
Chart 7. Operating Revenue per Revenue Ton-Mile, Year over Year Percent Change	9
Chart 8. Ton Load Factor Year over Year Point Change.....	9
Chart 9. Operating Expense per Revenue Ton-Mile, Year over Year Percent Change	10
Chart 10. Operating Expense per Available Ton-Mile, Year over Year Percent Change	10
TOTAL PASSENGER MAJORS.....	11
Chart 11. Passenger Revenue per Revenue Passenger-Mile, Year over Year Percent Change.....	14
Chart 12. Revenue Passenger-Miles (Scheduled Service), Year over Year Percent Change	14
Chart 13. Available Seat-Miles (Scheduled Passenger Service), Year over Year Percent Change.....	15
Chart 14. Passenger Load Factor, Year over Year Point Change	15
Chart 15. Passenger (RPM) Yield for the Quarter	16
Chart 16. Passenger Load Factor for the Quarter	16
Alaska Airlines Inc. (AS).....	17
Allegiant Air (G4).....	18
American Airlines Inc. (AA)	19
Delta Air Lines Inc. (DL)	20
Envoy Air (MQ)	21
Frontier Airlines Inc. (F9).....	22
Hawaiian Airlines Inc. (HA).....	23
JetBlue Airways (B6)	24
Republic Airline (YX).....	25
SkyWest Airlines Inc. (OO)	26
Southwest Airlines Co. (WN).....	27
Spirit Air Lines (NK)	28
Sun Country Airlines (SY)	29
United Air Lines Inc. (UA).....	30
SYSTEM CARGO MAJORS.....	31
Atlas Air Inc. (5Y).....	34
Federal Express Corporation (FX).....	35
Kalitta Air LLC (KAQ).....	36
Polar Air Cargo Airways (PO).....	37
United Parcel Service (5X).....	38
USA Jet Airlines Inc. (U7).....	39
Comparison of Operating Profit (Loss) for Individual System Majors.....	40
Comparison of Net Income (Loss) for Individual System Majors.....	41
Comparison of Passenger Load Factors for Individual System Passenger Majors	42
Comparison of Passenger Yields (Cents) for Individual System Passenger Majors	43
Comparison of Operating Profit Margin (Percent) for Individual System Majors.....	44
Comparison of Debt-to-Investment and Total Debt for Individual System Majors	45
Endnotes	46
Carrier List.....	47
Explanation of Line Items.....	48

INTRODUCTION

INTRODUCTION: This report contains tables and charts on the financial condition of the U.S. Major airlines. All data presented in this financial and traffic review are derived from data reported to the U.S. Department of Transportation on Form 41 Schedules by Large Certificated Air Carriers.

The data are presented on both a carrier group and an individual carrier basis, but the primary focus is on individual carrier system entity performance. Data are presented for the most recent quarterly period compared to the prior year's quarter, and 12-month ended data of the five most recent quarters compared to the same period one year prior. A graphic presentation of comparative trends, on a carrier group basis, is made for several unit and overall financial indicators.

Considerations when viewing the reports:

In the case of merged carriers, data for the carriers involved have been combined and presented under the name of the surviving carrier so that meaningful (proforma) comparisons can be made. See endnotes for further information regarding timing of mergers.

In some instances, a metric in the individual carrier report will show a symbol. Please see the endnotes for a glossary of symbols.

While the Office of Aviation Analysis has reviewed the reports for obvious errors, the data are presented as reported by the carriers to the Bureau of Transportation Statistics, and have not been verified or compared to publicly filed financial documents.

Carriers can move between groupings (Majors and Nationals) based on the criteria listed below. In the instance where a carrier falls into both groupings during the time periods of a report, a carrier will appear under both groupings. The data from the Majors report and the data from the Nationals report should not be combined without ensuring any duplications are removed.

Carrier Group Definitions

Majors: Air carriers with annual operating revenues exceeding \$1,000,000,000

Nationals: Air carriers with annual operating revenues between \$100,000,000 and \$1,000,000,000

Large Regionals: Air carriers with operating revenues between \$20,000,000 and \$99,000,000

Medium Regionals: Carriers with annual operating revenues less than \$19,999,999 or that operate only aircraft with 60 seats or less (or 18,000 lbs maximum payload)

Certain data in this review are classified in two broad categories: namely "Domestic" and "International" services. "Domestic" service encompasses operations within and between the 50 states of the United States, the District of Columbia, the Commonwealth of Puerto Rico, and the U.S. Virgin Islands. It also encompasses Canadian transborder operations and Mexican transborder operations. All other operations are considered "International" services, which includes operations in the Atlantic, Latin, and Pacific regions.

Suggestions from users for improving either the scope, presentation, or utility of this review are welcomed. Please feel free to make suggestions, provide discrepancy details or error information to the Competition and Policy Analysis Division, Office of Aviation Analysis, Office of the Secretary, U.S. Department of Transportation, 1200 New Jersey Avenue, SE, Washington, D.C. 20590.

QUARTERLY FINANCIAL & TRAFFIC REVIEW

SYSTEM OPERATIONS

System Passenger and All-Cargo Majors

Items	Quarter Ended		12 Months Ended				
	2024 q1	2023 q1	2024 q1	2023 q4	2023 q3	2023 q2	2023 q1
<u>FINANCIAL RESULTS: (\$Millions)</u>							
1 Operating Revenues	68,526.3	66,066.1	290,487.0	288,026.7	286,383.4	284,760.6	281,806.5
2 Operating Expenses	68,302.5	65,454.9	275,724.0	272,876.4	269,582.5	266,324.3	266,027.9
3 Operating Profit (Loss)	223.8	611.2	14,762.9	15,150.4	16,801.0	18,436.3	15,778.6
4 Net Income (Loss)	-1,171.7	-573.1	9,261.0	9,859.5	9,984.6	11,059.3	7,990.1
<u>TRAFFIC: (Billions)</u>							
5 RPMs - Scheduled Rev. Svc.	250.2	232.5	1,070.6	1,052.9	1,029.0	1,000.3	969.6
6 ASMs - Scheduled Rev. Svc.	310.1	290.1	1,282.3	1,262.3	1,225.9	1,187.9	1,150.1
7 Overall RTMs (All Svc.)	35.5	33.7	152.0	150.2	147.8	145.1	142.9
8 Overall ATMs (All Svc.)	60.3	58.6	253.6	251.9	248.4	243.6	239.0
<u>YIELD & UNIT COST & PROFITS: (Cents)</u>							
9 Operating Revenue per RTM	192.9	195.9	191.1	191.7	193.8	196.2	197.2
10 Operating Expense per RTM	192.3	194.1	181.3	181.6	182.4	183.5	186.1
11 Operating Profit (Loss) per RTM	0.6	1.8	9.7	10.1	11.4	12.7	11.0
12 Operating Expense per ATM	113.2	111.6	108.7	108.3	108.5	109.3	111.3
13 Passenger Revenue per RPM	16.24	16.47	16.51	16.57	16.73	16.90	16.81
<u>FINANCIAL RATIOS:</u>							
14 Operating Revenues to Total Investment	*	*	1.39	1.37	1.37	1.37	1.38
15 Times Interest Earned	*	*	3.56	3.60	3.65	3.84	3.14
16 Current Assets to Current Liabilities	*	*	0.78	0.83	0.88	1.06	0.91
17 No. of Days Cash Coverage of Cash Exp.	*	*	68.8	68.6	81.4	89.7	86.5
<u>FINANCIAL PERCENTAGES: (%)</u>							
18 Operating Profit (Loss) to Operating Revenue	0.3	0.9	5.1	5.3	5.9	6.5	5.6
19 Net Income to Stockholders Equity	*	*	10.55	11.41	11.98	13.78	10.37
20 Corporate Return on Investment	*	*	6.7	7.0	7.1	7.7	6.4
21 Debt to Total Investment	*	*	55.7	56.3	56.9	61.3	60.0
<u>LOAD FACTOR: (%)</u>							
22 Passenger Load Factor (Sch. Svc.)	80.7	80.2	83.5	83.4	83.9	84.2	84.3
23 Ton Load Factor (All Svc.)	58.9	57.5	60.0	59.7	59.5	59.6	59.8
<u>Employment & Productivity:</u>							
24 Employment, Total Weighted Avg CY	703,835	684,465	699,541	694,698	691,441	687,356	681,217
25 Overall RTM's per Employee (000)	50.5	49.3	217.4	216.3	213.8	211.1	209.8
<u>CHANGE OVER COMPARABLE PERIOD 12 MONTHS EARLIER</u>							
26 Operating Revenues (%)	3.7	23.8	3.1	7.0	12.4	20.9	35.4
27 Operating Expenses (%)	4.4	13.7	3.6	5.7	8.9	14.5	24.6
28 Operating Profit (Loss) (in Millions \$)	-387.4	4,819.3	-1,015.7	4,191.0	9,499.0	15,540.5	21,143.0
29 Net Income (Loss) (in Millions \$)	-598.6	3,504.0	1,270.9	5,373.5	9,145.9	9,673.8	7,750.6
30 RPMs (Sch. Svc.) (%)	7.6	24.5	10.4	14.0	16.4	20.2	28.2
31 ASMs (Sch. Svc.) (%)	6.9	15.8	11.5	13.7	13.5	13.9	16.8
32 Operating Revenues per RTM (%)	-1.5	11.5	-3.1	-0.6	3.5	9.1	16.7
33 Operating Expense per RTM (%)	-0.9	2.4	-2.6	-1.8	0.3	3.3	7.4
34 Passenger Revenue per RPM (Sch. Svc.)(%)	-1.4	19.2	-1.8	1.7	8.2	17.3	28.8

QUARTERLY FINANCIAL & TRAFFIC REVIEW

DOMESTIC OPERATIONS

Domestic Passenger and All-Cargo Majors

Items	Quarter Ended		12 Months Ended				
	2024 q1	2023 q1	2024 q1	2023 q4	2023 q3	2023 q2	2023 q1
<u>FINANCIAL RESULTS: (\$Millions)</u>							
1 Operating Revenues	49,067.9	47,640.6	205,923.5	204,496.2	204,109.6	204,049.2	204,037.1
2 Operating Expenses	47,583.1	46,909.5	191,780.5	191,106.9	189,841.7	188,051.4	188,437.6
3 Operating Profit (Loss)	1,484.9	731.1	14,143.0	13,389.3	14,267.9	15,997.8	15,599.5
4 Net Income (Loss)	255.3	-440.4	9,385.8	8,690.1	8,372.6	9,352.3	8,400.5
<u>TRAFFIC: (Billions)</u>							
5 RPMs - Scheduled Rev. Svc.	178.3	170.5	761.4	753.7	739.7	724.2	710.4
6 ASMs - Scheduled Rev. Svc.	218.0	211.8	907.4	901.2	878.9	856.5	835.2
7 Overall RTMs (All Svc.)	21.6	20.7	91.9	91.0	89.7	88.5	87.7
8 Overall ATMs (All Svc.)	35.3	35.0	146.9	146.6	145.4	143.3	141.6
<u>YIELD & UNIT COST & PROFITS: (Cents)</u>							
9 Operating Revenue per RTM	227.2	229.9	224.2	224.8	227.5	230.6	232.6
10 Operating Expense per RTM	220.3	226.4	208.8	210.0	211.6	212.5	214.8
11 Operating Profit (Loss) per RTM	6.9	3.5	15.4	14.7	15.9	18.1	17.8
12 Operating Expense per ATM	134.7	134.1	130.5	130.4	130.6	131.2	133.0
13 Passenger Revenue per RPM	16.40	16.47	16.48	16.49	16.68	16.90	16.93
<u>FINANCIAL RATIOS:</u>							
14 Operating Revenues to Total Investment	*	*	**	**	**	**	**
15 Times Interest Earned	*	*	**	**	**	**	**
16 Current Assets to Current Liabilities	*	*	**	**	**	**	**
17 No. of Days Cash Coverage of Cash Exp.	*	*	**	**	**	**	**
<u>FINANCIAL PERCENTAGES: (%)</u>							
18 Operating Profit (Loss) to Operating Revenue	3.0	1.5	6.9	6.5	7.0	7.8	7.6
19 Net Income to Stockholders Equity	*	*	**	**	**	**	**
20 Corporate Return on Investment	*	*	**	**	**	**	**
21 Debt to Total Investment	*	*	**	**	**	**	**
<u>LOAD FACTOR: (%)</u>							
22 Passenger Load Factor (Sch. Svc.)	81.8	80.5	83.9	83.6	84.2	84.6	85.1
23 Ton Load Factor (All Svc.)	61.2	59.2	62.5	62.1	61.7	61.7	61.9
<u>Employment & Productivity:</u>							
24 Employment, Total Weighted Avg CY	*	*	**	**	**	**	**
25 Overall RTM's per Employee (000)	*	*	**	**	**	**	**
<u>CHANGE OVER COMPARABLE PERIOD 12 MONTHS EARLIER</u>							
26 Operating Revenues (%)	3.0	21.4	0.9	4.5	9.7	17.0	31.8
27 Operating Expenses (%)	1.4	13.5	1.8	4.5	7.7	12.4	21.9
28 Operating Profit (Loss) (in Millions \$)	753.7	2,816.8	-1,456.5	606.5	4,457.5	8,929.3	15,416.6
29 Net Income (Loss) (in Millions \$)	695.7	1,742.4	985.3	2,031.9	4,535.3	4,345.9	4,498.8
30 RPMs (Sch. Svc.) (%)	4.6	16.2	7.2	9.8	10.1	10.6	15.4
31 ASMs (Sch. Svc.) (%)	2.9	11.6	8.6	10.8	9.4	7.9	9.2
32 Operating Revenues per RTM (%)	-1.2	11.0	-3.6	-1.2	3.8	10.3	19.5
33 Operating Expense per RTM (%)	-2.7	3.8	-2.8	-1.3	1.9	5.9	10.5
34 Passenger Revenue per RPM (Sch. Svc.)(%)	-0.4	18.0	-2.7	0.5	7.6	17.1	30.3

QUARTERLY FINANCIAL & TRAFFIC REVIEW

INTERNATIONAL OPERATIONS

International Passenger and All-Cargo Majors

Items	Quarter Ended		12 Months Ended				
	2024 q1	2023 q1	2024 q1	2023 q4	2023 q3	2023 q2	2023 q1
FINANCIAL RESULTS: (\$Millions)							
1 Operating Revenues	19,458.4	18,425.5	84,563.4	83,530.5	82,273.8	80,711.4	77,769.4
2 Operating Expenses	20,719.5	18,545.4	83,943.5	81,769.4	79,740.7	78,272.9	77,590.3
3 Operating Profit (Loss)	-1,261.1	-119.9	619.9	1,761.1	2,533.1	2,438.5	179.1
4 Net Income (Loss)	-1,427.0	-132.7	-124.9	1,169.4	1,612.1	1,707.0	-410.4
TRAFFIC: (Billions)							
5 RPMs - Scheduled Rev. Svc.	71.8	62.0	309.2	299.3	289.3	276.1	259.2
6 ASMs - Scheduled Rev. Svc.	92.1	78.3	374.9	361.1	347.0	331.4	314.8
7 Overall RTMs (All Svc.)	13.9	13.0	60.2	59.3	58.1	56.6	55.2
8 Overall ATMs (All Svc.)	25.0	23.7	106.6	105.3	103.0	100.3	97.4
YIELD & UNIT COST & PROFITS: (Cents)							
9 Operating Revenue per RTM	139.7	141.7	140.5	141.0	141.6	142.6	140.9
10 Operating Expense per RTM	148.8	142.6	139.5	138.0	137.3	138.3	140.6
11 Operating Profit (Loss) per RTM	-9.1	-0.9	1.0	3.0	4.4	4.3	0.3
12 Operating Expense per ATM	82.8	78.4	78.7	77.7	77.4	78.1	79.7
13 Passenger Revenue per RPM	15.82	16.46	16.60	16.76	16.85	16.90	16.49
FINANCIAL RATIOS:							
14 Operating Revenues to Total Investment	*	*	**	**	**	**	**
15 Times Interest Earned	*	*	**	**	**	**	**
16 Current Assets to Current Liabilities	*	*	**	**	**	**	**
17 No. of Days Cash Coverage of Cash Exp.	*	*	**	**	**	**	**
FINANCIAL PERCENTAGES: (%)							
18 Operating Profit (Loss) to Operating Revenue	-6.5	-0.7	0.7	2.1	3.1	3.0	0.2
19 Net Income to Stockholders Equity	*	*	**	**	**	**	**
20 Corporate Return on Investment	*	*	**	**	**	**	**
21 Debt to Total Investment	*	*	**	**	**	**	**
LOAD FACTOR: (%)							
22 Passenger Load Factor (Sch. Svc.)	78.0	79.1	82.5	82.9	83.4	83.3	82.3
23 Ton Load Factor (All Svc.)	55.7	55.0	56.4	56.3	56.4	56.5	56.7
Employment & Productivity:							
24 Employment, Total Weighted Avg CY	*	*	**	**	**	**	**
25 Overall RTM's per Employee (000)	*	*	**	**	**	**	**
CHANGE OVER COMPARABLE PERIOD 12 MONTHS EARLIER							
26 Operating Revenues (%)	5.6	30.4	8.7	13.7	19.6	32.1	45.7
27 Operating Expenses (%)	11.7	14.1	8.2	8.6	11.8	19.9	31.7
28 Operating Profit (Loss) (in Millions \$)	-1,141.2	2,002.5	440.8	3,584.5	5,041.5	6,611.2	5,726.4
29 Net Income (Loss) (in Millions \$)	-1,294.3	1,761.7	285.6	3,341.5	4,610.6	5,327.9	3,251.8
30 RPMs (Sch. Svc.) (%)	16.0	55.1	19.3	26.2	36.4	55.6	84.6
31 ASMs (Sch. Svc.) (%)	17.6	28.6	19.1	21.4	25.3	32.8	43.6
32 Operating Revenues per RTM (%)	-1.4	14.5	-0.3	2.8	5.5	10.8	15.2
33 Operating Expense per RTM (%)	4.3	0.2	-0.8	-1.8	-1.4	0.6	4.2
34 Passenger Revenue per RPM (Sch. Svc.)(%)	-3.9	24.0	0.7	5.0	9.7	18.1	23.6

COMPARISONS AMONG PASSENGER MAJOR GROUP AIRLINES SYSTEM ENTITY

Chart 1. Operating Profit and Net Income (Loss) For the Quarter 2024q1

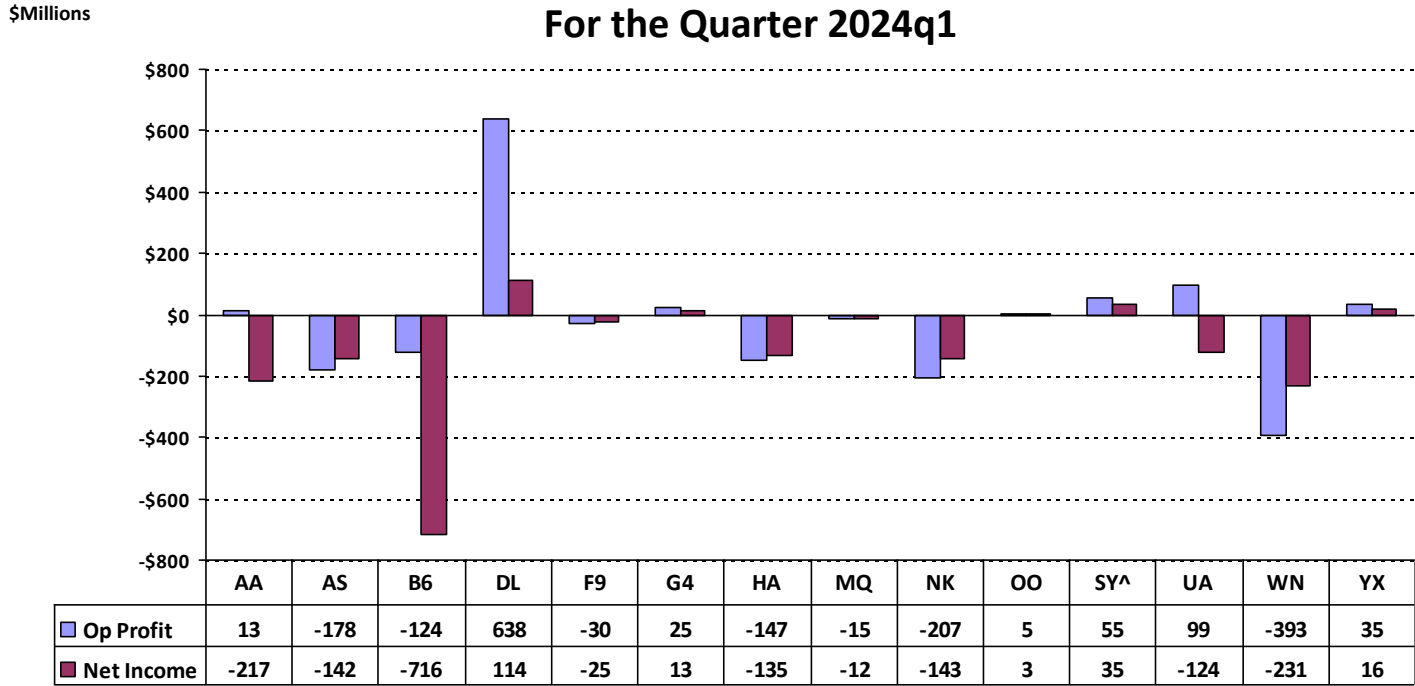
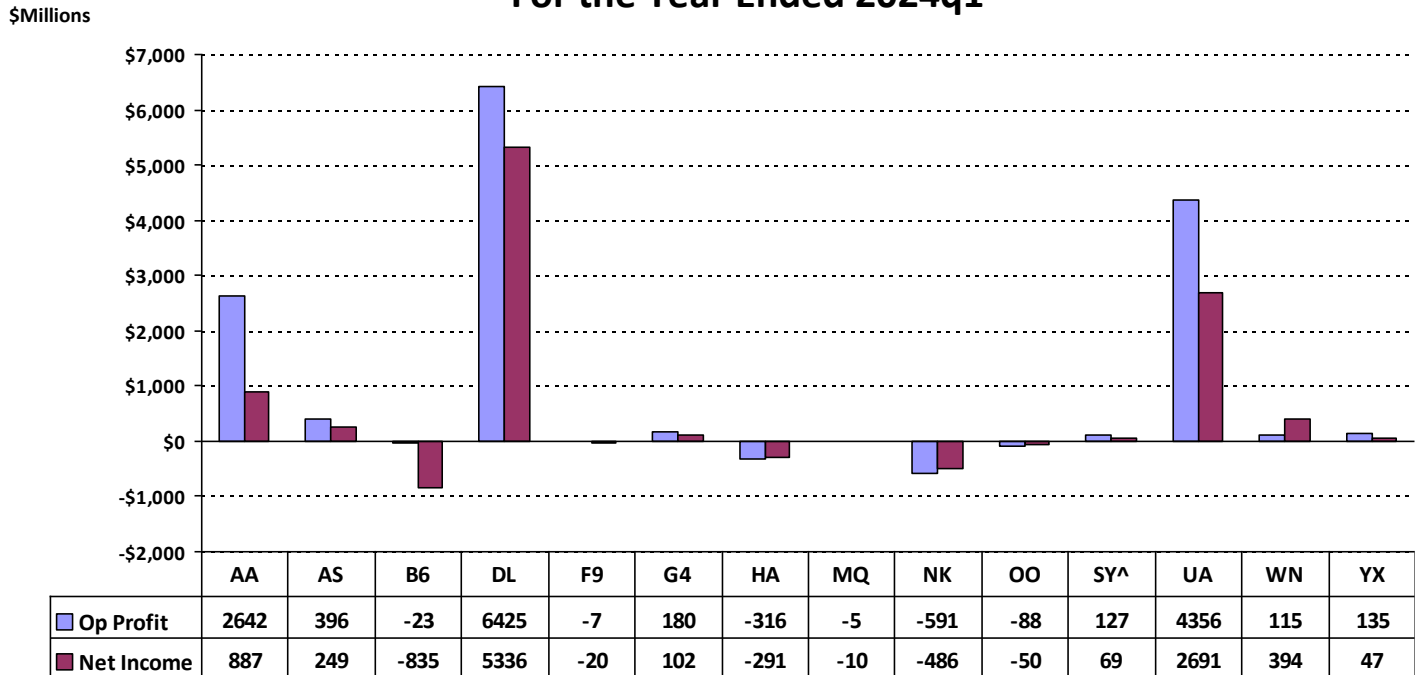


Chart 2. Operating Profit and Net Income (Loss) For the Year Ended 2024q1



TOTAL ALL MAJOR GROUP AIRLINES SYSTEM ENTITY

Chart 3. Operating Profit (Loss) By Quarter

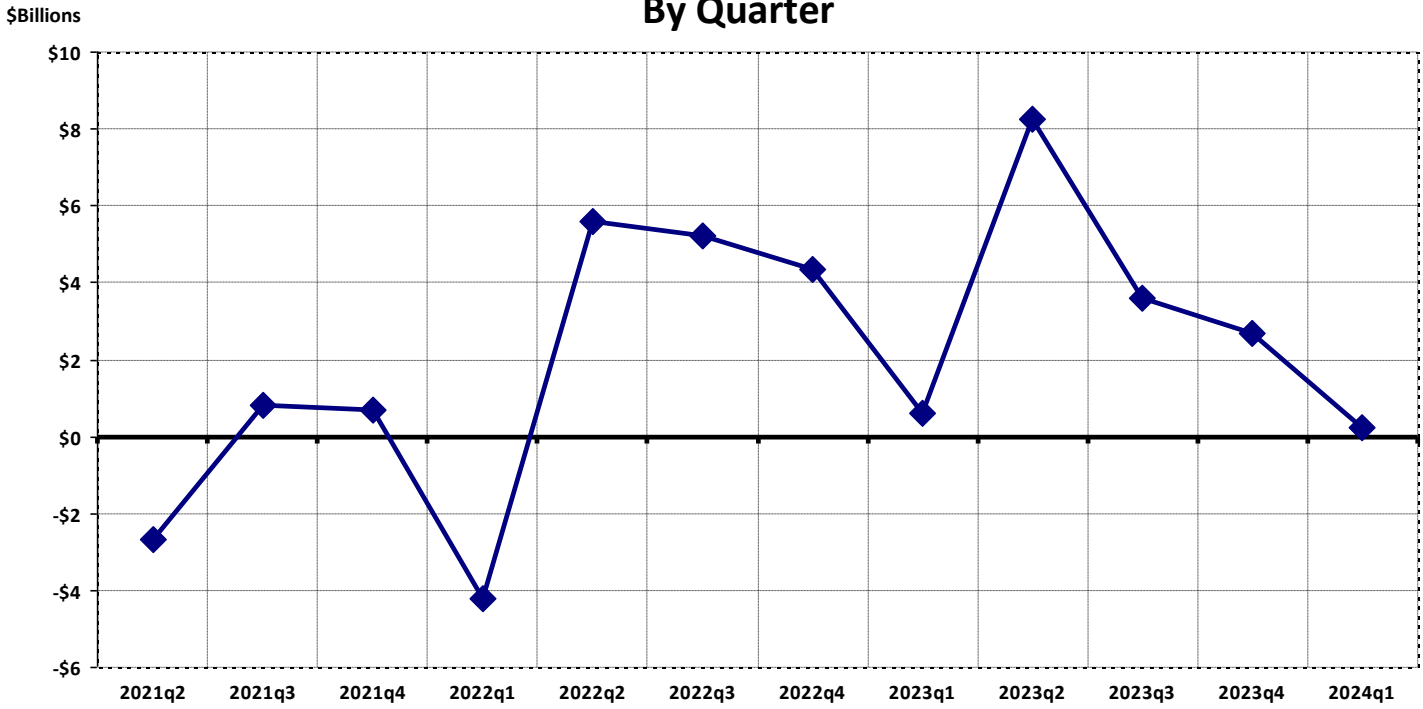
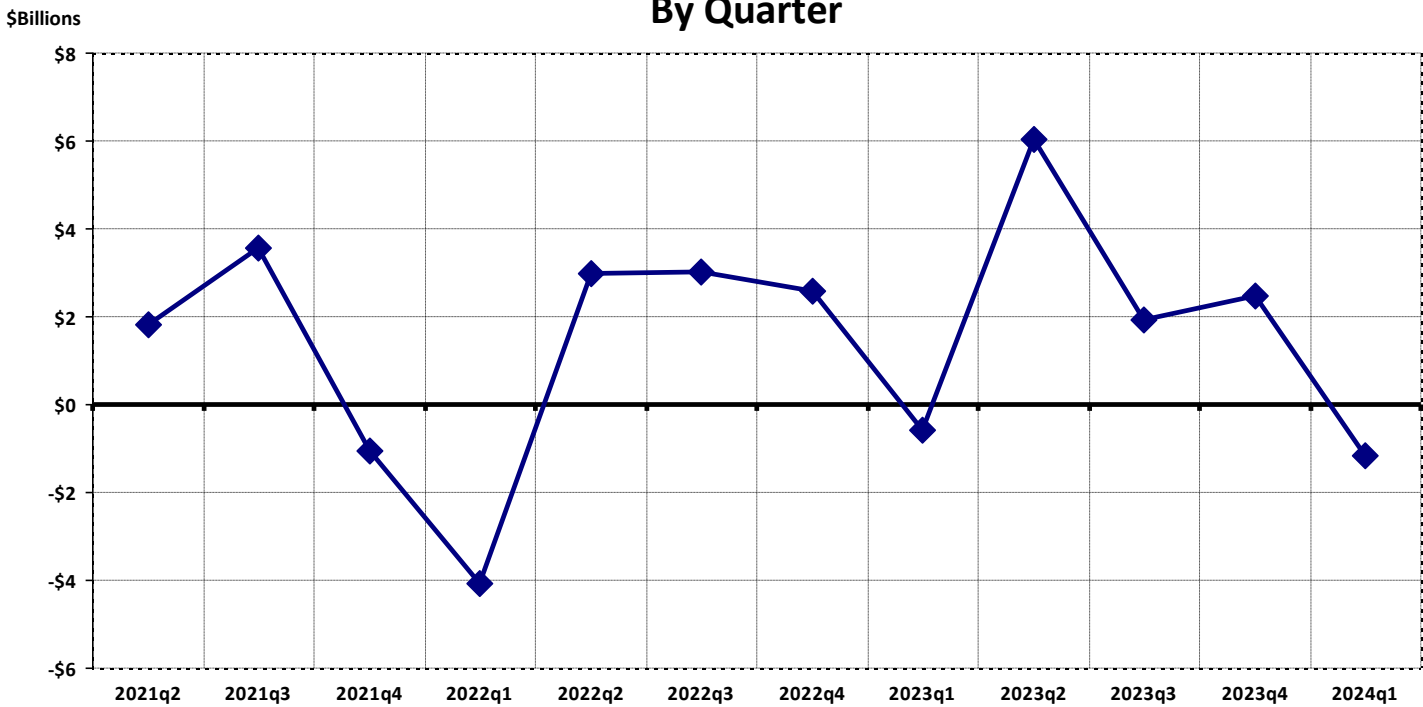


Chart 4. Net Income (Loss) By Quarter



TOTAL ALL MAJOR GROUP AIRLINES SYSTEM ENTITY

Chart 5. Operating Profit (Loss) Year Ended By Quarter

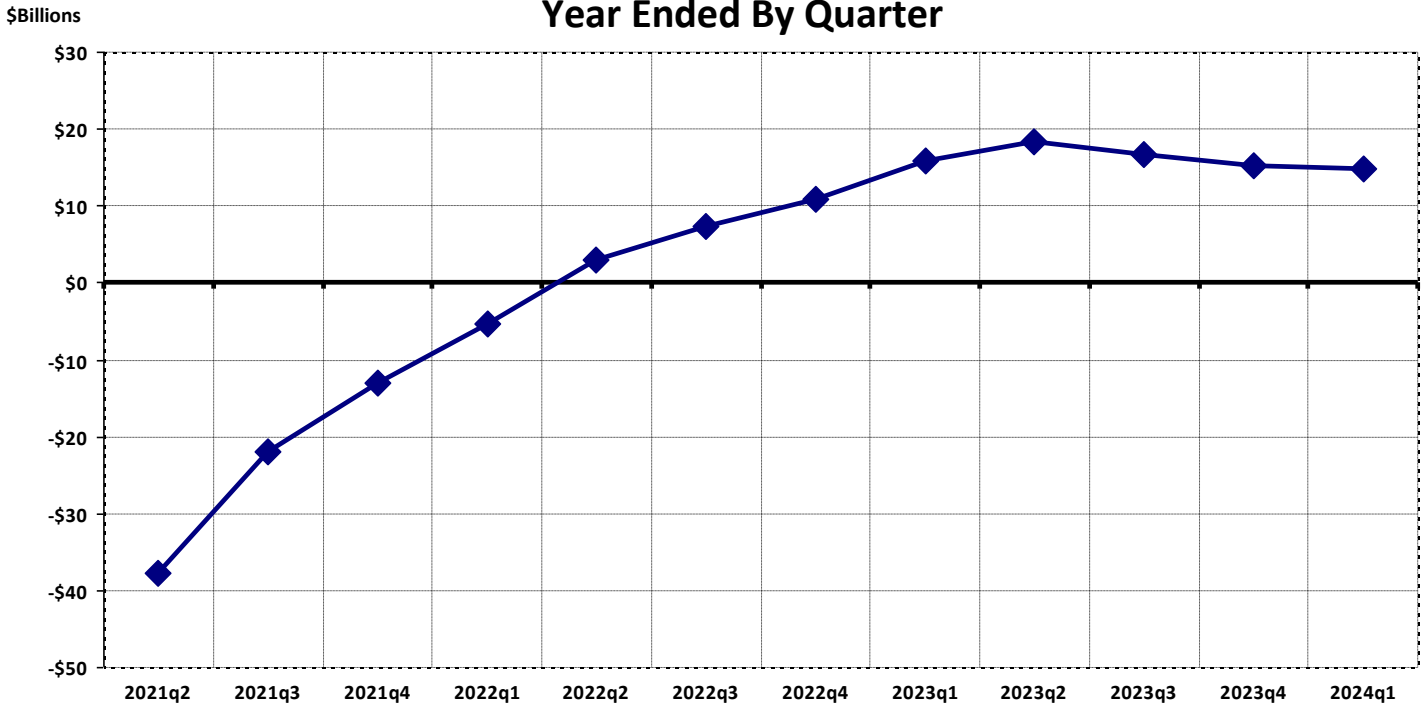
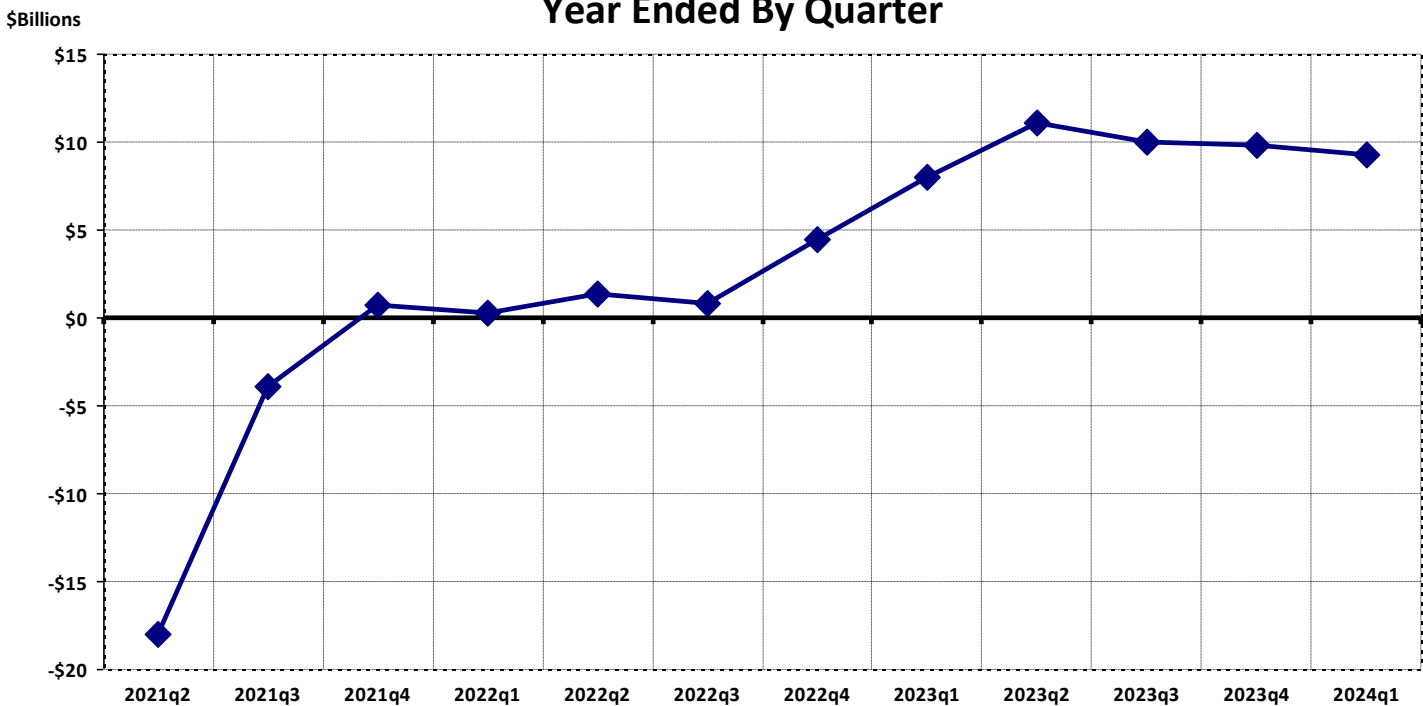


Chart 6. Net Income (Loss) Year Ended By Quarter



TOTAL ALL MAJOR GROUP AIRLINES SYSTEM ENTITY

Chart 7. Operating Revenue Per Revenue Ton-Mile Year Over Year Percent Change

Percent Change YOY

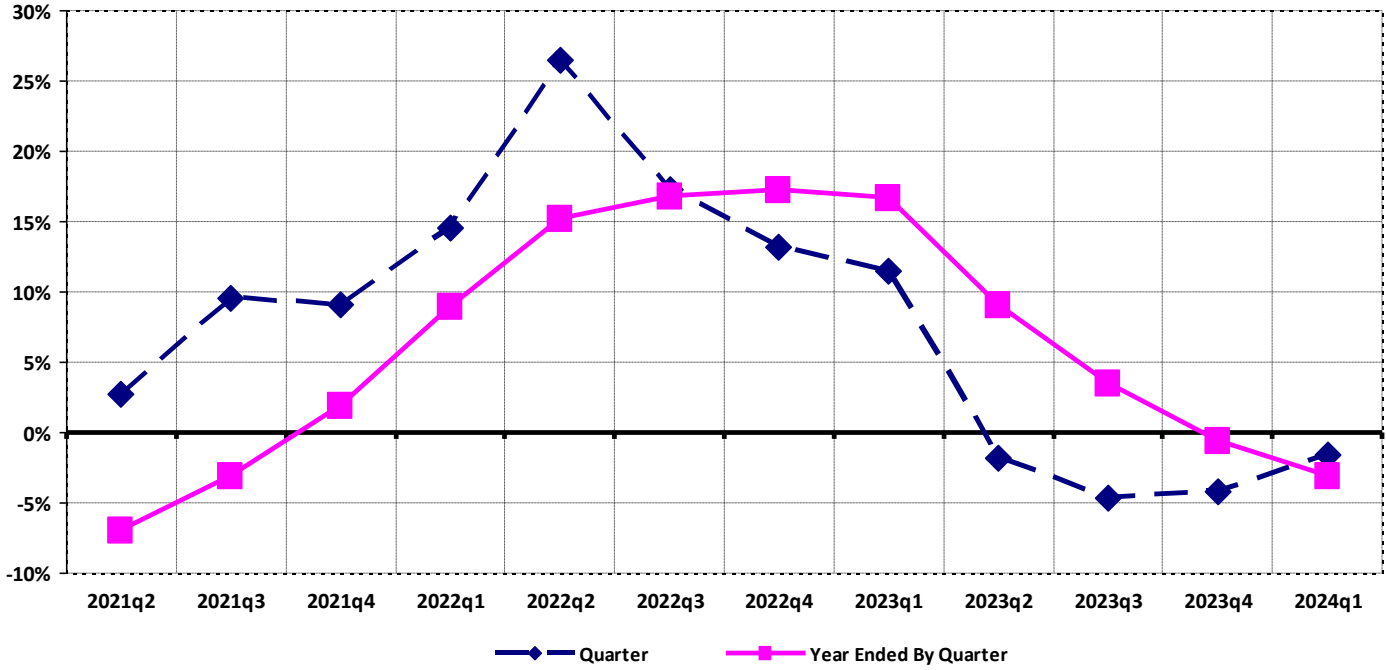
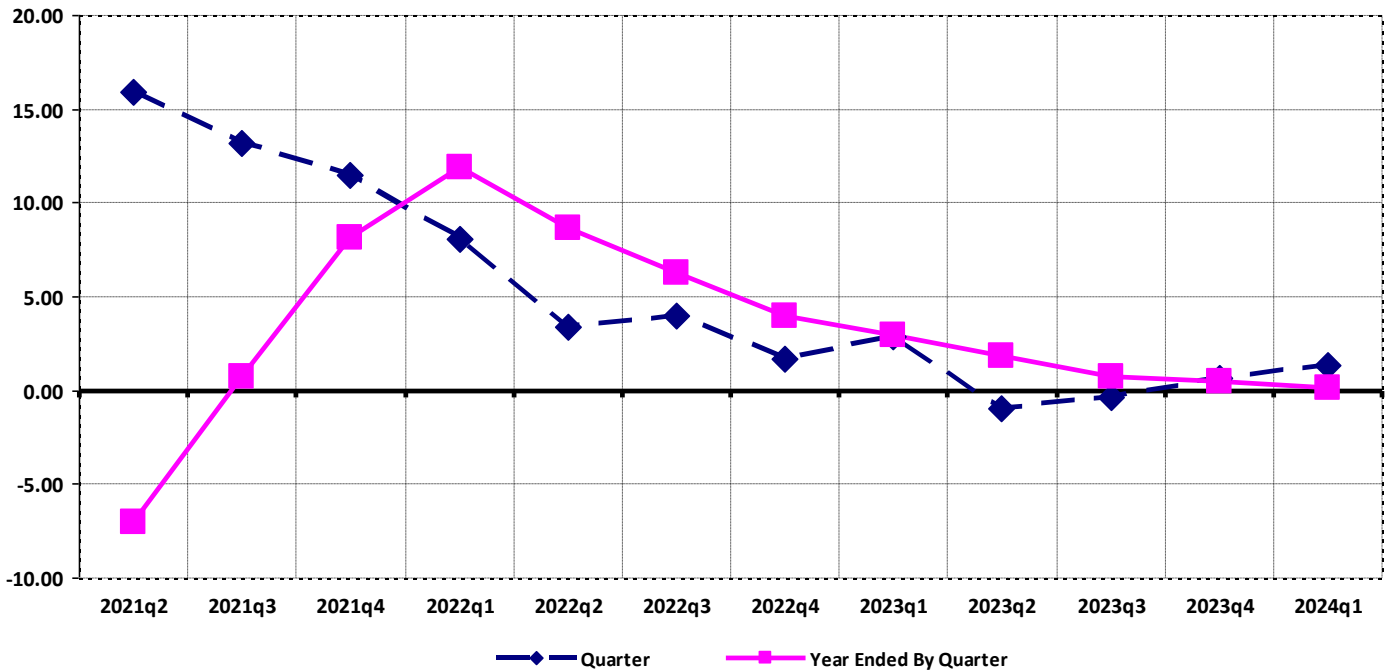


Chart 8. Ton Load Factor Year Over Year Point Change

Point Change YOY



TOTAL ALL MAJOR GROUP AIRLINES SYSTEM ENTITY

Chart 9. Operating Expense Per Revenue Ton-Mile Year Over Year Percent Change

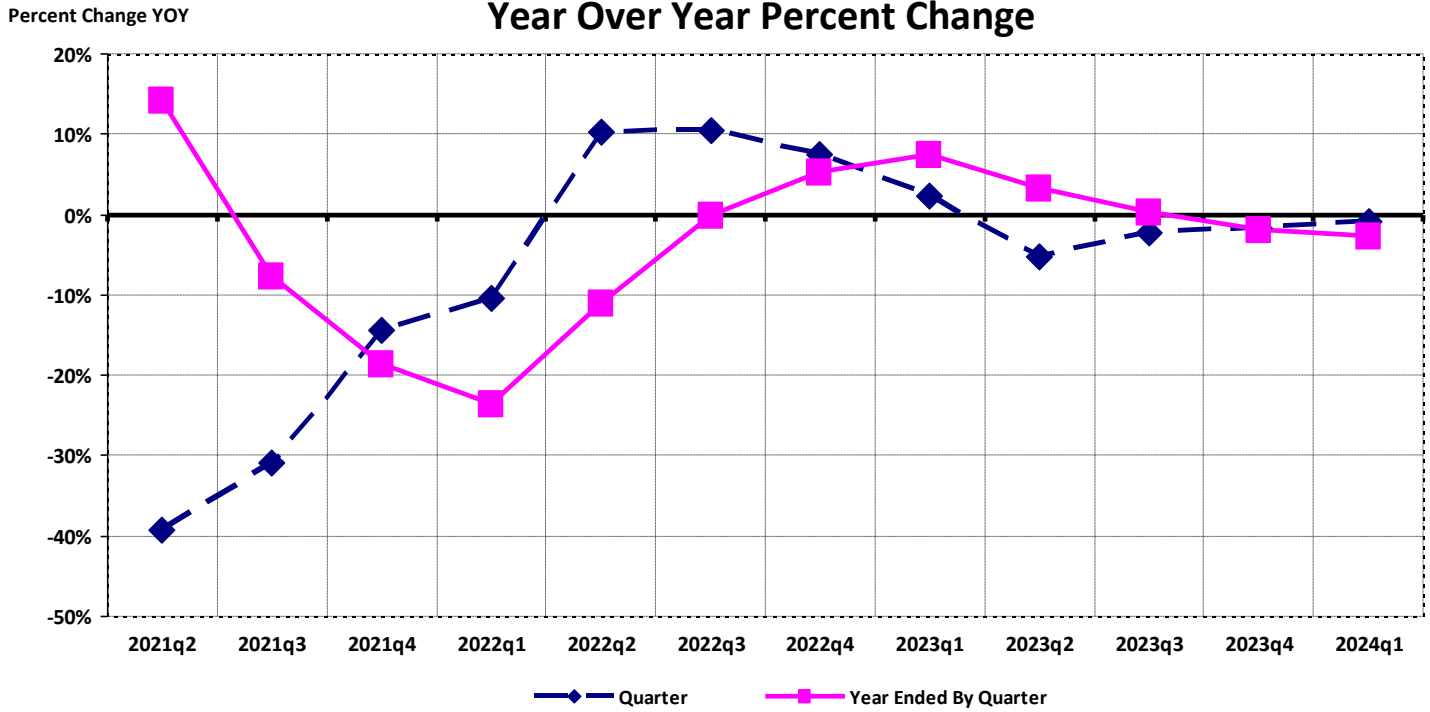
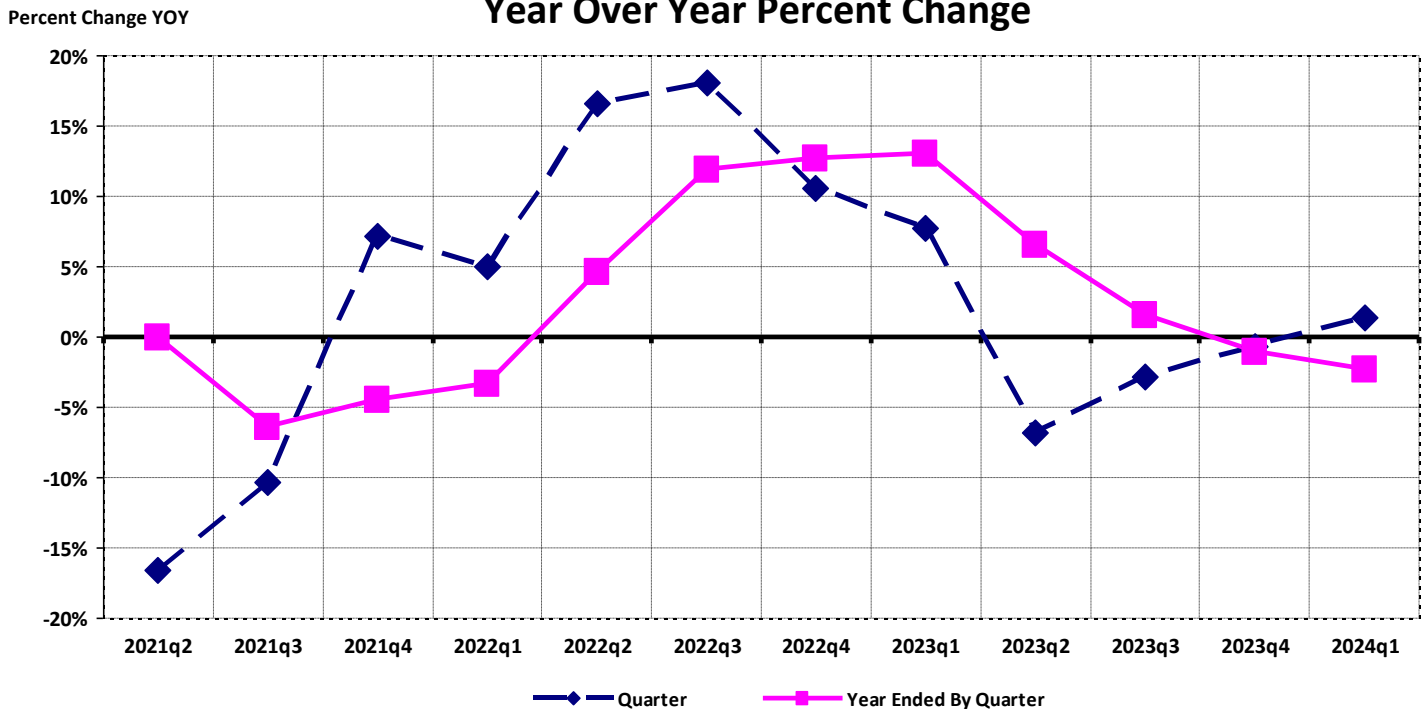


Chart 10. Operating Expense Per Available Ton-Mile Year Over Year Percent Change



QUARTERLY FINANCIAL & TRAFFIC REVIEW

SYSTEM OPERATIONS

System Passenger Majors

Items	Quarter Ended		12 Months Ended				
	2024 q1	2023 q1	2024 q1	2023 q4	2023 q3	2023 q2	2023 q1
<u>FINANCIAL RESULTS: (\$Millions)</u>							
1 Operating Revenues	54,840.2	51,764.5	234,737.8	231,662.1	229,190.7	226,029.5	220,683.9
2 Operating Expenses	55,065.7	51,567.4	221,392.1	217,893.8	213,851.5	209,316.2	206,993.6
3 Operating Profit (Loss)	-225.5	197.1	13,345.7	13,768.3	15,339.3	16,713.3	13,690.3
4 Net Income (Loss)	-1,562.8	-1,025.0	8,081.4	8,619.3	8,701.5	9,531.6	6,239.3
<u>TRAFFIC: (Billions)</u>							
5 RPMs - Scheduled Rev. Svc.	250.2	232.5	1,070.6	1,052.9	1,029.0	1,000.3	969.6
6 ASMs - Scheduled Rev. Svc.	310.1	290.1	1,282.3	1,262.3	1,225.9	1,187.9	1,150.1
7 Overall RTMs (All Svc.)	27.0	24.9	114.6	112.6	109.9	107.0	104.0
8 Overall ATMs (All Svc.)	42.8	40.2	178.1	175.4	171.7	166.5	161.2
<u>YIELD & UNIT COST & PROFITS: (Cents)</u>							
9 Operating Revenue per RTM	203.4	207.6	204.9	205.8	208.5	211.2	212.1
10 Operating Expense per RTM	204.2	206.8	193.2	193.6	194.5	195.6	198.9
11 Operating Profit (Loss) per RTM	-0.8	0.8	11.6	12.2	14.0	15.6	13.2
12 Operating Expense per ATM	128.5	128.4	124.3	124.2	124.5	125.7	128.4
13 Passenger Revenue per RPM	16.24	16.47	16.51	16.57	16.73	16.90	16.81
<u>FINANCIAL RATIOS:</u>							
14 Operating Revenues to Total Investment	*	*	1.45	1.42	1.42	1.40	1.37
15 Times Interest Earned	*	*	3.18	3.20	3.23	3.39	2.59
16 Current Assets to Current Liabilities	*	*	0.76	0.80	0.85	0.87	0.87
17 No. of Days Cash Coverage of Cash Exp.	*	*	79.0	79.7	96.2	108.4	105.6
<u>FINANCIAL PERCENTAGES: (%)</u>							
18 Operating Profit (Loss) to Operating Revenue	-0.4	0.4	5.7	5.9	6.7	7.4	6.2
19 Net Income to Stockholders Equity	*	*	15.10	16.42	17.44	20.20	14.09
20 Corporate Return on Investment	*	*	8.0	8.4	8.5	9.1	7.1
21 Debt to Total Investment	*	*	65.8	65.6	66.3	67.3	69.9
<u>PASSENGER LOAD FACTOR: (Sch. Svc. %)</u>							
22 Actual	80.7	80.2	83.5	83.4	83.9	84.2	84.3
23 Breakeven	86.1	83.2	81.6	80.9	80.3	79.6	81.2
<u>Employment & Productivity:</u>							
24 Employment, Total Weighted Avg CY	484,083	455,655	477,878	470,771	461,520	451,255	440,325
25 Overall RTM's per Employee (000)	55.7	54.7	239.8	239.1	238.2	237.2	236.3
<u>CHANGE OVER COMPARABLE PERIOD 12 MONTHS EARLIER</u>							
26 Operating Revenues (%)	5.9	36.1	6.4	11.9	19.5	30.6	49.7
27 Operating Expenses (%)	6.8	19.8	7.0	9.8	13.8	20.2	32.1
28 Operating Profit (Loss) (in Millions \$)	-422.6	5,212.3	-344.6	5,290.2	11,542.2	17,733.4	22,997.8
29 Net Income (Loss) (in Millions \$)	-537.8	3,895.2	1,842.2	6,275.2	10,765.5	11,480.1	9,543.6
30 RPMs (Sch. Svc.) (%)	7.6	24.5	10.4	14.0	16.4	20.2	28.2
31 ASMs (Sch. Svc.) (%)	6.9	15.8	11.5	13.7	13.5	13.9	16.8
32 Operating Revenues per RTM (%)	-2.0	12.1	-3.4	-0.9	4.1	10.6	19.8
33 Operating Expense per RTM (%)	-1.3	-1.3	-2.9	-2.8	-0.9	1.8	5.7
34 Passenger Revenue per RPM (Sch. Svc.)(%)	-1.4	19.2	-1.8	1.7	8.2	17.3	28.8

QUARTERLY FINANCIAL & TRAFFIC REVIEW

DOMESTIC OPERATIONS

Domestic Passenger Majors

Items	Quarter Ended		12 Months Ended				
	2024 q1	2023 q1	2024 q1	2023 q4	2023 q3	2023 q2	2023 q1
FINANCIAL RESULTS: (\$Millions)							
1 Operating Revenues	41,150.9	39,275.9	173,731.6	171,856.7	170,827.0	169,864.3	168,520.8
2 Operating Expenses	40,987.2	39,516.9	164,396.9	162,926.5	161,008.8	158,355.9	157,936.1
3 Operating Profit (Loss)	163.6	-241.0	9,334.8	8,930.2	9,818.2	11,508.4	10,584.7
4 Net Income (Loss)	-798.2	-1,085.0	5,339.5	5,052.7	4,866.7	5,966.2	4,746.2
TRAFFIC: (Billions)							
5 RPMs - Scheduled Rev. Svc.	178.3	170.5	761.4	753.7	739.7	724.2	710.4
6 ASMs - Scheduled Rev. Svc.	218.0	211.8	907.4	901.2	878.9	856.5	835.2
7 Overall RTMs (All Svc.)	18.2	17.4	77.6	76.9	75.5	74.0	72.6
8 Overall ATMs (All Svc.)	28.2	27.5	116.9	116.3	114.7	112.0	109.5
YIELD & UNIT COST & PROFITS: (Cents)							
9 Operating Revenue per RTM	225.9	225.2	223.8	223.6	226.3	229.7	232.0
10 Operating Expense per RTM	225.0	226.6	211.7	212.0	213.3	214.1	217.4
11 Operating Profit (Loss) per RTM	0.9	-1.4	12.0	11.6	13.0	15.6	14.6
12 Operating Expense per ATM	145.5	143.5	140.6	140.1	140.4	141.4	144.2
13 Passenger Revenue per RPM	16.40	16.47	16.48	16.49	16.68	16.90	16.93
FINANCIAL RATIOS:							
14 Operating Revenues to Total Investment	*	*	**	**	**	**	**
15 Times Interest Earned	*	*	**	**	**	**	**
16 Current Assets to Current Liabilities	*	*	**	**	**	**	**
17 No. of Days Cash Coverage of Cash Exp.	*	*	**	**	**	**	**
FINANCIAL PERCENTAGES: (%)							
18 Operating Profit (Loss) to Operating Revenue	0.4	-0.6	5.4	5.2	5.7	6.8	6.3
19 Net Income to Stockholders Equity	*	*	**	**	**	**	**
20 Corporate Return on Investment	*	*	**	**	**	**	**
21 Debt to Total Investment	*	*	**	**	**	**	**
PASSENGER LOAD FACTOR: (Sch. Svc. %)							
22 Actual	81.8	80.5	83.9	83.6	84.2	84.6	85.1
23 Breakeven	87.4	85.4	83.4	82.9	82.5	81.5	82.5
Employment & Productivity:							
24 Employment, Total Weighted Avg CY	*	*	**	**	**	**	**
25 Overall RTM's per Employee (000)	*	*	**	**	**	**	**
CHANGE OVER COMPARABLE PERIOD 12 MONTHS EARLIER							
26 Operating Revenues (%)	4.8	28.5	3.1	7.5	13.9	22.2	39.8
27 Operating Expenses (%)	3.7	16.2	4.1	6.9	10.3	14.9	25.2
28 Operating Profit (Loss) (in Millions \$)	404.6	3,207.7	-1,250.0	1,553.1	5,726.4	10,376.6	16,155.7
29 Net Income (Loss) (in Millions \$)	286.8	2,221.1	593.3	2,527.6	5,265.4	5,400.3	5,094.9
30 RPMs (Sch. Svc.) (%)	4.6	16.2	7.2	9.8	10.1	10.6	15.4
31 ASMs (Sch. Svc.) (%)	2.9	11.6	8.6	10.8	9.4	7.9	9.2
32 Operating Revenues per RTM (%)	0.3	11.3	-3.5	-1.6	3.9	11.0	21.8
33 Operating Expense per RTM (%)	-0.7	0.6	-2.6	-2.2	0.7	4.4	9.1
34 Passenger Revenue per RPM (Sch. Svc.)(%)	-0.4	18.0	-2.7	0.5	7.6	17.1	30.3

QUARTERLY FINANCIAL & TRAFFIC REVIEW

INTERNATIONAL OPERATIONS

International Passenger Majors

Items	Quarter Ended		12 Months Ended				
	2024 q1	2023 q1	2024 q1	2023 q4	2023 q3	2023 q2	2023 q1
FINANCIAL RESULTS: (\$Millions)							
1 Operating Revenues	13,689.4	12,488.6	61,006.2	59,805.4	58,363.8	56,165.2	52,163.1
2 Operating Expenses	14,078.5	12,050.6	56,995.2	54,967.3	52,842.7	50,960.3	49,057.5
3 Operating Profit (Loss)	-389.1	438.1	4,010.9	4,838.1	5,521.1	5,205.0	3,105.6
4 Net Income (Loss)	-764.7	60.0	2,741.9	3,566.6	3,834.8	3,565.4	1,493.1
TRAFFIC: (Billions)							
5 RPMs - Scheduled Rev. Svc.	71.8	62.0	309.2	299.3	289.3	276.1	259.2
6 ASMs - Scheduled Rev. Svc.	92.1	78.3	374.9	361.1	347.0	331.4	314.8
7 Overall RTMs (All Svc.)	8.7	7.5	36.9	35.7	34.5	33.1	31.4
8 Overall ATMs (All Svc.)	14.7	12.6	61.1	59.1	57.1	54.5	51.7
YIELD & UNIT COST & PROFITS: (Cents)							
9 Operating Revenue per RTM	156.5	166.6	165.2	167.6	169.4	169.9	166.1
10 Operating Expense per RTM	160.9	160.8	154.3	154.0	153.4	154.2	156.2
11 Operating Profit (Loss) per RTM	-4.4	5.8	10.9	13.6	16.0	15.7	9.9
12 Operating Expense per ATM	95.9	95.4	93.2	93.0	92.6	93.5	94.9
13 Passenger Revenue per RPM	15.82	16.46	16.60	16.76	16.85	16.90	16.49
FINANCIAL RATIOS:							
14 Operating Revenues to Total Investment	*	*	**	**	**	**	**
15 Times Interest Earned	*	*	**	**	**	**	**
16 Current Assets to Current Liabilities	*	*	**	**	**	**	**
17 No. of Days Cash Coverage of Cash Exp.	*	*	**	**	**	**	**
FINANCIAL PERCENTAGES: (%)							
18 Operating Profit (Loss) to Operating Revenue	-2.8	3.5	6.6	8.1	9.5	9.3	6.0
19 Net Income to Stockholders Equity	*	*	**	**	**	**	**
20 Corporate Return on Investment	*	*	**	**	**	**	**
21 Debt to Total Investment	*	*	**	**	**	**	**
PASSENGER LOAD FACTOR: (Sch. Svc. %)							
22 Actual	78.0	79.1	82.5	82.9	83.4	83.3	82.3
23 Breakeven	82.9	77.3	77.2	75.9	74.8	74.9	77.6
Employment & Productivity:							
24 Employment, Total Weighted Avg CY	*	*	**	**	**	**	**
25 Overall RTM's per Employee (000)	*	*	**	**	**	**	**
CHANGE OVER COMPARABLE PERIOD 12 MONTHS EARLIER							
26 Operating Revenues (%)	9.6	67.0	17.0	26.8	39.7	64.6	94.2
27 Operating Expenses (%)	16.8	33.2	16.2	19.4	25.6	40.5	60.4
28 Operating Profit (Loss) (in Millions \$)	-827.2	2,004.6	905.3	3,737.1	5,815.8	7,356.8	6,842.1
29 Net Income (Loss) (in Millions \$)	-824.7	1,674.0	1,248.9	3,747.5	5,500.1	6,079.8	4,448.7
30 RPMs (Sch. Svc.) (%)	16.0	55.1	19.3	26.2	36.4	55.6	84.6
31 ASMs (Sch. Svc.) (%)	17.6	28.6	19.1	21.4	25.3	32.8	43.6
32 Operating Revenues per RTM (%)	-6.1	21.2	-0.6	4.3	9.1	16.9	23.4
33 Operating Expense per RTM (%)	0.1	-3.3	-1.2	-1.8	-1.9	-0.3	1.9
34 Passenger Revenue per RPM (Sch. Svc.)(%)	-3.9	24.0	0.7	5.0	9.7	18.1	23.6

TOTAL PASSENGER MAJOR GROUP AIRLINES SYSTEM ENTITY

Chart 11. Passenger Revenue Per Revenue Passenger Mile Year Over Year Percent Change

Percent Change YOY

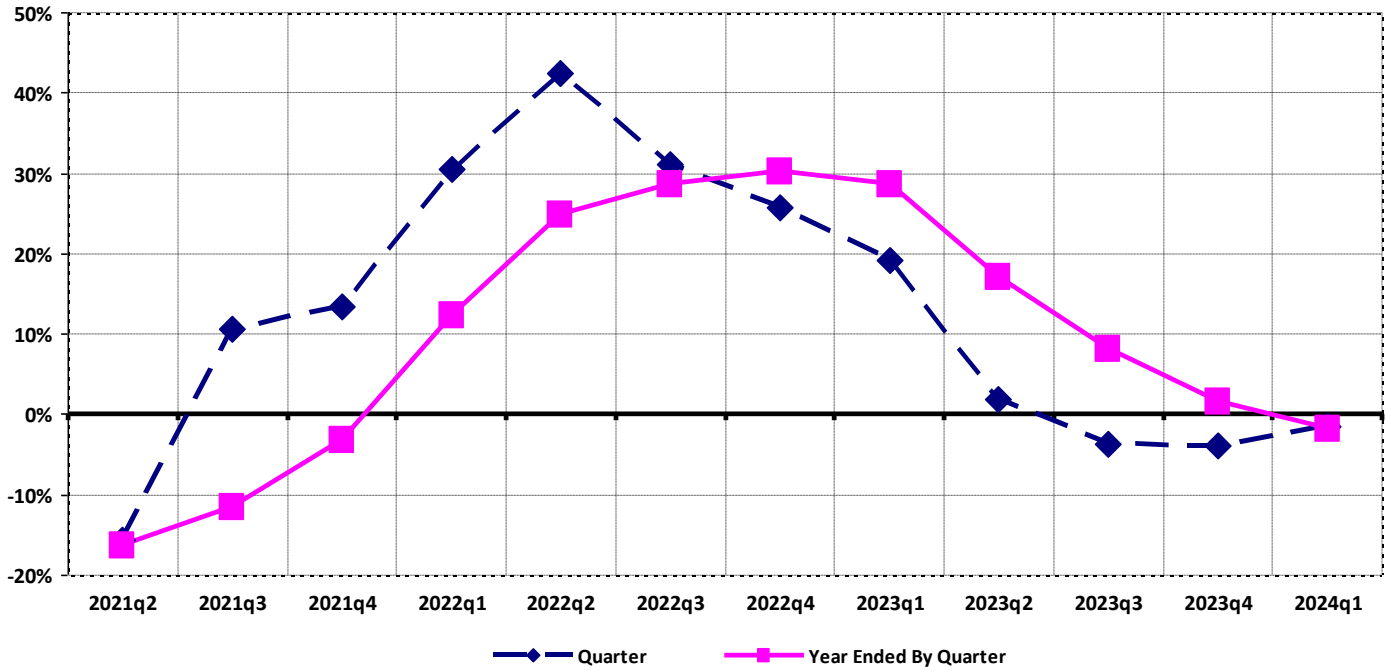
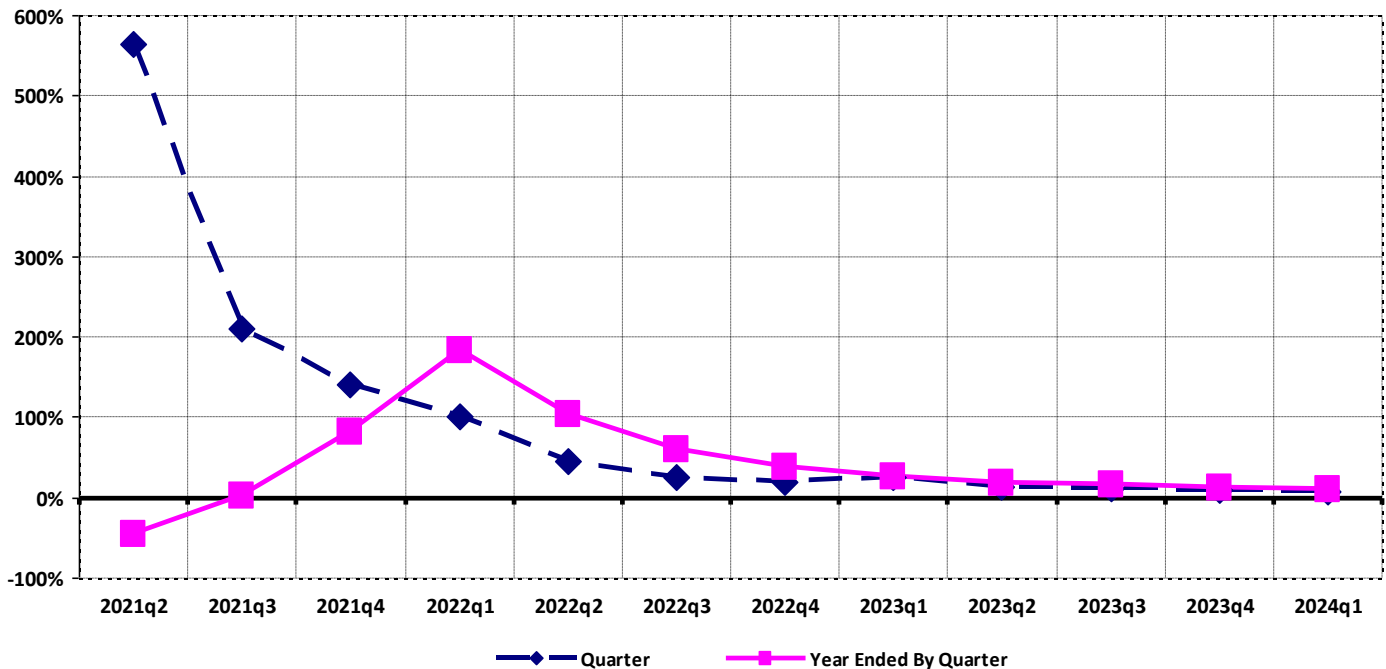


Chart 12. Revenue Passenger Miles (Scheduled Service) Year Over Year Percent Change

Percent Change YOY



TOTAL PASSENGER MAJOR GROUP AIRLINES SYSTEM ENTITY

Chart 13. Available Seat Miles (Scheduled Passenger Service) Year Over Year Percent Change

Percent Change YOY

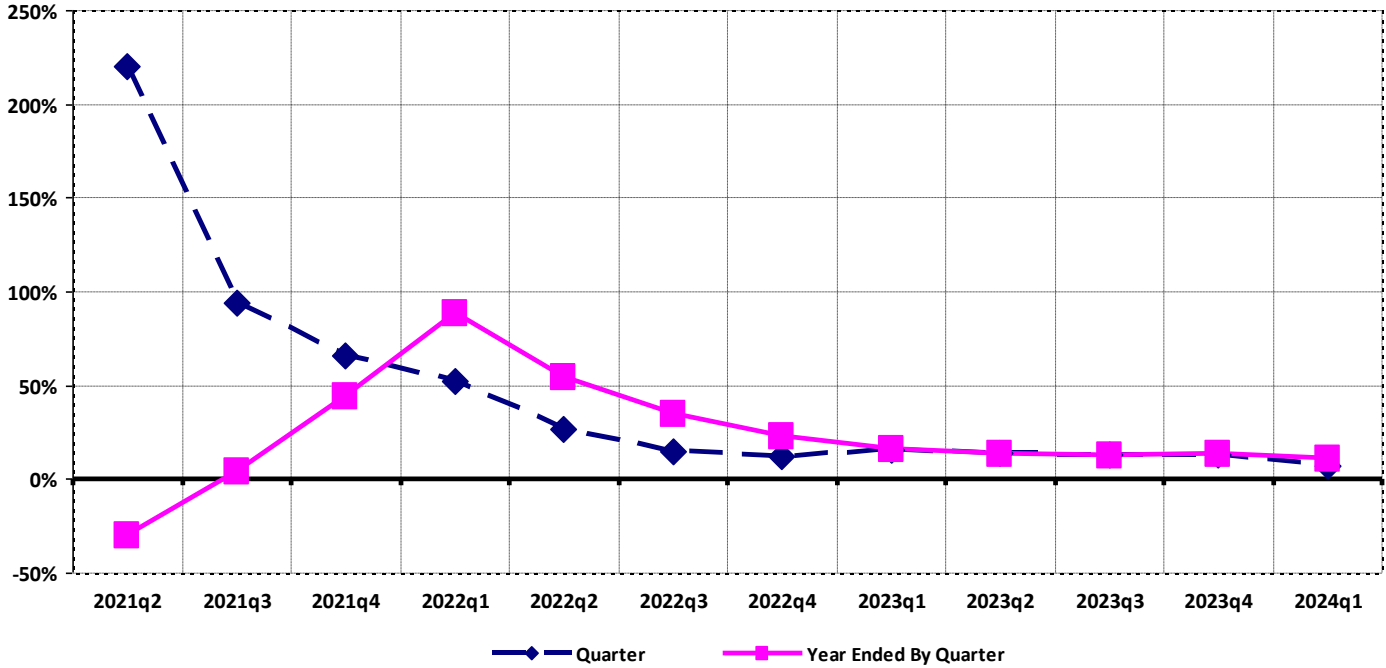
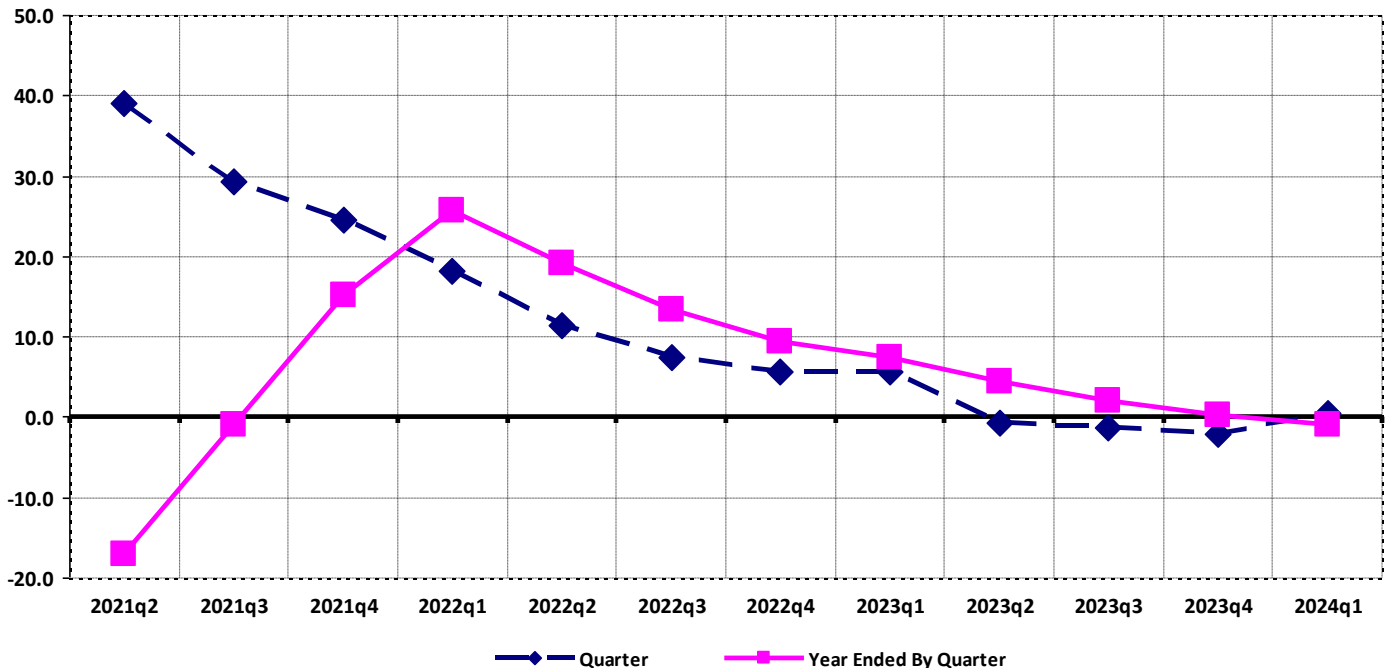


Chart 14. Passenger Load Factor Year Over Year Point Change

Point Change YOY



TOTAL PASSENGER MAJOR GROUP AIRLINES SYSTEM ENTITY

Chart 15. Passenger (RPM) Yield For the Quarter 2024q1

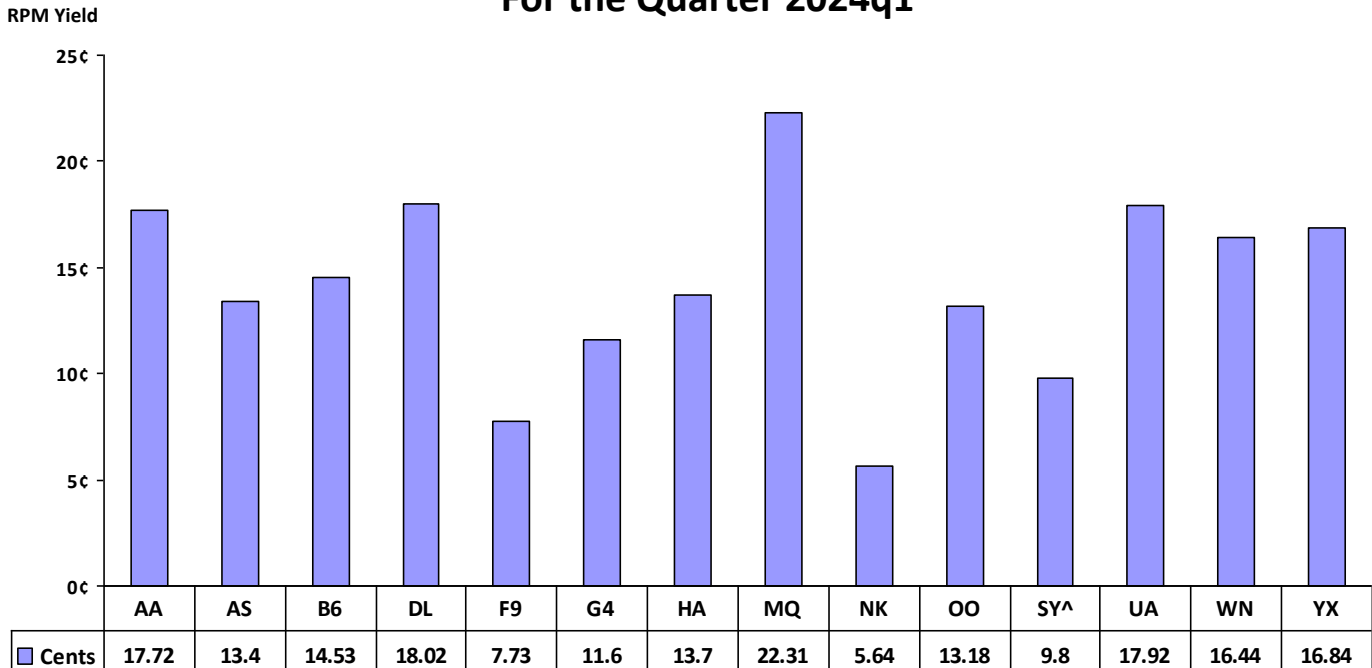
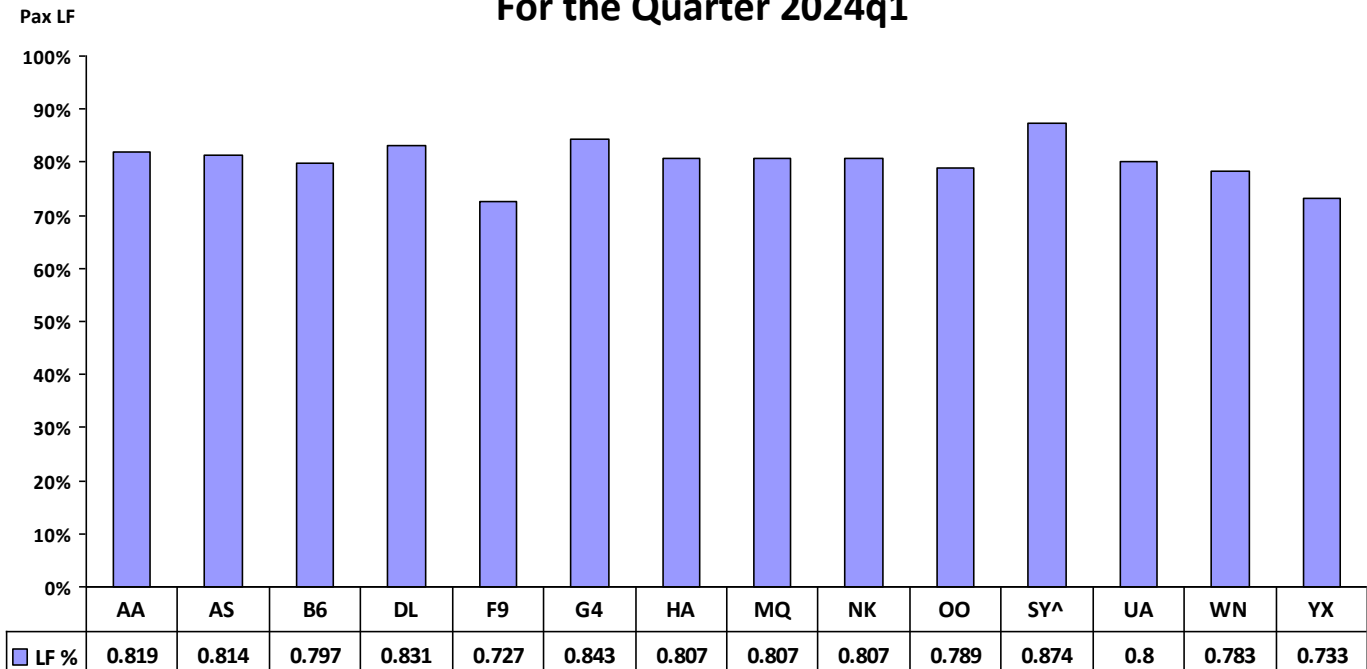


Chart 16. Passenger Load Factor For the Quarter 2024q1



QUARTERLY FINANCIAL & TRAFFIC REVIEW

SYSTEM OPERATIONS

Alaska Airlines Inc. (AS)

Items	Quarter Ended		12 Months Ended				
	2024 q1	2023 q1	2024 q1	2023 q4	2023 q3	2023 q2	2023 q1
FINANCIAL RESULTS: (\$Millions)							
1 Operating Revenues	2,229.3	2,194.6	10,452.9	10,418.2	10,346.1	10,335.3	10,156.2
2 Operating Expenses	2,407.5	2,338.5	10,057.1	9,988.0	9,878.3	9,868.1	9,880.2
3 Operating Profit (Loss)	-178.2	-143.9	395.8	430.1	467.9	467.1	276.0
4 Net Income (Loss)	-142.0	-138.2	248.7	252.5	308.3	218.4	121.4
TRAFFIC: (Billions)							
5 RPMs - Scheduled Rev. Svc.	11.4	11.6	52.6	52.9	51.9	50.2	48.9
6 ASMs - Scheduled Rev. Svc.	14.0	14.6	62.6	63.2	61.5	59.2	57.4
7 Overall RTMs (All Svc.)	1.2	1.2	5.4	5.4	5.3	5.1	5.0
8 Overall ATMs (All Svc.)	1.8	1.9	8.2	8.3	8.1	7.8	7.6
YIELD & UNIT COST & PROFITS: (Cents)							
9 Operating Revenue per RTM	192.4	185.1	195.0	193.3	195.7	201.9	203.9
10 Operating Expense per RTM	207.7	197.2	187.6	185.4	186.9	192.7	198.3
11 Operating Profit (Loss) per RTM	-15.4	-12.1	7.4	8.0	8.9	9.1	5.5
12 Operating Expense per ATM	130.7	121.8	122.0	120.1	122.0	126.7	130.8
13 Passenger Revenue per RPM	13.40	13.48	14.35	14.36	14.62	15.05	15.04
FINANCIAL RATIOS:							
14 Operating Revenues to Total Investment	*	*	1.01	1.01	1.01	1.02	1.01
15 Times Interest Earned	*	*	5.60	5.69	6.82	4.95	3.09
16 Current Assets to Current Liabilities	*	*	1.48	1.49	1.50	1.42	1.47
17 No. of Days Cash Coverage of Cash Exp.	*	*	81.8	63.7	88.9	89.7	88.0
FINANCIAL PERCENTAGES: (%)							
18 Operating Profit (Loss) to Operating Revenue	-8.0	-6.6	3.8	4.1	4.5	4.5	2.7
19 Net Income to Stockholders Equity	*	*	2.97	3.03	3.74	2.67	1.50
20 Corporate Return on Investment	*	*	3.1	3.1	3.7	2.9	2.0
21 Debt to Total Investment	*	*	18.8	18.5	21.4	19.7	18.1
PASSENGER LOAD FACTOR: (Sch. Svc. %)							
22 Actual	81.4	79.8	84.1	83.7	84.4	84.9	85.2
23 Breakeven	99.3	92.9	85.7	84.4	84.5	84.8	87.3
Employment & Productivity:							
24 Employment, Total Weighted Avg CY	19,088	18,681	19,134	19,032	18,911	18,790	18,444
25 Overall RTM's per Employee (000)	60.7	63.5	280.2	283.1	279.5	272.5	270.1
CHANGE OVER COMPARABLE PERIOD 12 MONTHS EARLIER							
26 Operating Revenues (%)	1.6	30.6	2.9	8.1	14.2	26.3	44.0
27 Operating Expenses (%)	3.0	19.7	1.8	5.2	10.6	23.0	39.4
28 Operating Profit (Loss) (in Millions \$)	-34.3	129.3	119.8	283.4	338.0	303.3	310.6
29 Net Income (Loss) (in Millions \$)	-3.8	-48.3	127.3	82.7	174.1	-36.7	-319.6
30 RPMs (Sch. Svc.) (%)	-2.2	22.7	7.7	13.2	15.8	19.4	26.7
31 ASMs (Sch. Svc.) (%)	-4.1	18.2	9.0	14.6	14.2	14.7	16.8
32 Operating Revenues per RTM (%)	3.9	6.8	-4.4	-4.4	-1.2	6.0	14.1
33 Operating Expense per RTM (%)	5.3	-2.1	-5.4	-7.0	-4.3	3.3	10.5
34 Passenger Revenue per RPM (Sch. Svc.)(%)	-0.6	11.9	-4.6	-3.1	2.8	13.6	24.3

QUARTERLY FINANCIAL & TRAFFIC REVIEW

SYSTEM OPERATIONS

Allegiant Air (G4)

Items	Quarter Ended		12 Months Ended				
	2024 q1	2023 q1	2024 q1	2023 q4	2023 q3	2023 q2	2023 q1
FINANCIAL RESULTS: (\$Millions)							
1 Operating Revenues	632.5	649.7	2,489.8	2,507.0	2,510.4	2,505.4	2,451.4
2 Operating Expenses	607.9	551.5	2,310.1	2,253.7	2,185.5	2,179.2	2,224.6
3 Operating Profit (Loss)	24.6	98.1	179.7	253.2	324.9	326.2	226.8
4 Net Income (Loss)	13.5	61.4	102.0	149.9	204.3	202.1	129.6
TRAFFIC: (Billions)							
5 RPMs - Scheduled Rev. Svc.	3.9	3.9	15.7	15.7	15.6	15.7	15.7
6 ASMs - Scheduled Rev. Svc.	4.6	4.6	18.3	18.2	18.0	18.0	18.0
7 Overall RTMs (All Svc.)	0.4	0.4	1.6	1.6	1.6	1.6	1.6
8 Overall ATMs (All Svc.)	0.5	0.5	1.9	1.8	1.8	1.8	1.8
YIELD & UNIT COST & PROFITS: (Cents)							
9 Operating Revenue per RTM	160.2	163.4	156.5	157.3	158.8	157.8	154.6
10 Operating Expense per RTM	154.0	138.7	145.2	141.4	138.2	137.2	140.3
11 Operating Profit (Loss) per RTM	6.2	24.7	11.3	15.9	20.5	20.5	14.3
12 Operating Expense per ATM	129.5	119.5	124.6	122.1	120.0	119.5	122.3
13 Passenger Revenue per RPM	11.60	12.26	11.37	11.54	11.76	11.72	11.43
FINANCIAL RATIOS:							
14 Operating Revenues to Total Investment	*	*	0.71	0.73	0.74	0.75	0.75
15 Times Interest Earned	*	*	2.21	2.78	3.38	3.30	2.54
16 Current Assets to Current Liabilities	*	*	0.79	0.90	1.71	1.65	1.65
17 No. of Days Cash Coverage of Cash Exp.	*	*	150.6	157.2	190.0	194.2	195.8
FINANCIAL PERCENTAGES: (%)							
18 Operating Profit (Loss) to Operating Revenue	3.9	15.1	7.2	10.1	12.9	13.0	9.3
19 Net Income to Stockholders Equity	*	*	6.24	9.27	12.81	12.85	8.38
20 Corporate Return on Investment	*	*	5.9	7.5	9.2	9.4	7.0
21 Debt to Total Investment	*	*	53.6	53.8	54.2	52.5	52.0
PASSENGER LOAD FACTOR: (Sch. Svc. %)							
22 Actual	84.3	86.4	86.0	86.5	87.0	87.2	87.3
23 Breakeven	87.4	68.2	79.5	74.5	71.3	71.4	76.4
Employment & Productivity:							
24 Employment, Total Weighted Avg CY	5,895	5,325	5,613	5,471	5,390	5,317	5,213
25 Overall RTM's per Employee (000)	67.0	74.7	283.4	291.3	293.3	298.7	304.2
CHANGE OVER COMPARABLE PERIOD 12 MONTHS EARLIER							
26 Operating Revenues (%)	-2.6	29.9	1.6	8.9	14.8	20.1	27.1
27 Operating Expenses (%)	10.2	12.7	3.8	4.2	3.9	9.5	24.9
28 Operating Profit (Loss) (in Millions \$)	-73.5	87.3	-47.1	113.7	241.6	230.2	79.0
29 Net Income (Loss) (in Millions \$)	-47.9	63.0	-27.6	83.3	183.3	134.8	-24.8
30 RPMs (Sch. Svc.) (%)	-1.0	10.3	0.0	2.7	3.8	8.1	16.7
31 ASMs (Sch. Svc.) (%)	1.4	1.3	1.6	1.6	-0.2	0.0	2.0
32 Operating Revenues per RTM (%)	-1.9	17.8	1.3	5.9	10.4	11.0	8.9
33 Operating Expense per RTM (%)	11.0	2.2	3.5	1.3	-0.1	1.2	7.0
34 Passenger Revenue per RPM (Sch. Svc.)(%)	-5.3	23.5	-0.5	6.2	12.9	13.9	10.8

QUARTERLY FINANCIAL & TRAFFIC REVIEW

SYSTEM OPERATIONS

American Airlines Inc. (AA)

Items	Quarter Ended		12 Months Ended				
	2024 q1	2023 q1	2024 q1	2023 q4	2023 q3	2023 q2	2023 q1
FINANCIAL RESULTS: (\$Millions)							
1 Operating Revenues	12,568.9	12,187.8	53,164.6	52,783.6	52,910.4	52,891.0	52,257.8
2 Operating Expenses	12,556.1	11,748.6	50,522.7	49,715.1	49,123.3	47,966.8	48,469.8
3 Operating Profit (Loss)	12.7	439.2	2,642.0	3,068.4	3,787.2	4,924.2	3,788.0
4 Net Income (Loss)	-216.6	84.6	886.8	1,188.0	1,910.3	2,901.9	2,000.5
TRAFFIC: (Billions)							
5 RPMs - Scheduled Rev. Svc.	51.8	47.1	214.4	209.7	207.1	203.7	199.9
6 ASMs - Scheduled Rev. Svc.	63.3	58.3	254.8	249.8	246.4	241.3	236.5
7 Overall RTMs (All Svc.)	5.7	5.1	23.3	22.8	22.5	22.2	21.9
8 Overall ATMs (All Svc.)	9.1	8.5	37.2	36.5	36.1	35.3	34.6
YIELD & UNIT COST & PROFITS: (Cents)							
9 Operating Revenue per RTM	221.7	237.5	227.7	231.4	235.0	238.7	239.1
10 Operating Expense per RTM	221.5	229.0	216.4	218.0	218.2	216.5	221.8
11 Operating Profit (Loss) per RTM	0.2	8.6	11.3	13.5	16.8	22.2	17.3
12 Operating Expense per ATM	137.4	138.5	135.9	136.1	136.3	135.9	140.1
13 Passenger Revenue per RPM	17.72	19.22	18.43	18.78	19.09	19.35	19.18
FINANCIAL RATIOS:							
14 Operating Revenues to Total Investment	*	*	1.52	1.49	1.48	1.49	1.49
15 Times Interest Earned	*	*	1.54	1.72	2.15	2.79	2.29
16 Current Assets to Current Liabilities	*	*	0.85	0.90	0.94	1.00	0.96
17 No. of Days Cash Coverage of Cash Exp.	*	*	62.2	57.8	81.8	95.5	90.1
FINANCIAL PERCENTAGES: (%)							
18 Operating Profit (Loss) to Operating Revenue	0.1	3.6	5.0	5.8	7.2	9.3	7.2
19 Net Income to Stockholders Equity	*	*	13.69	18.80	33.56	58.52	50.24
20 Corporate Return on Investment	*	*	8.8	9.6	11.5	14.1	11.4
21 Debt to Total Investment	*	*	80.9	80.8	81.2	80.4	84.0
PASSENGER LOAD FACTOR: (Sch. Svc. %)							
22 Actual	81.9	80.8	84.2	83.9	84.1	84.4	84.5
23 Breakeven	83.5	76.3	80.5	78.8	77.2	74.7	77.3
Employment & Productivity:							
24 Employment, Total Weighted Avg CY	101,857	98,807	101,682	100,919	99,843	98,708	97,507
25 Overall RTM's per Employee (000)	55.7	51.9	229.6	226.0	225.5	224.5	224.1
CHANGE OVER COMPARABLE PERIOD 12 MONTHS EARLIER							
26 Operating Revenues (%)	3.1	37.0	1.7	7.8	17.0	29.9	50.3
27 Operating Expenses (%)	6.9	10.9	4.2	5.1	7.5	12.7	25.3
28 Operating Profit (Loss) (in Millions \$)	-426.5	2,134.4	-1,146.0	1,414.8	4,291.8	6,790.7	7,704.9
29 Net Income (Loss) (in Millions \$)	-301.1	1,662.5	-1,113.7	850.0	3,320.0	4,570.5	4,140.3
30 RPMs (Sch. Svc.) (%)	10.1	21.8	7.3	9.5	12.8	18.2	27.3
31 ASMs (Sch. Svc.) (%)	8.6	12.7	7.7	8.6	10.4	12.5	16.7
32 Operating Revenues per RTM (%)	-6.7	17.5	-4.8	-0.2	5.9	13.0	22.4
33 Operating Expense per RTM (%)	-3.3	-4.8	-2.4	-2.7	-2.8	-2.0	2.0
34 Passenger Revenue per RPM (Sch. Svc.)(%)	-7.8	24.8	-3.9	2.0	10.7	21.1	33.1

QUARTERLY FINANCIAL & TRAFFIC REVIEW

SYSTEM OPERATIONS

Delta Air Lines Inc. (DL)

Items	Quarter Ended		12 Months Ended				
	2024 q1	2023 q1	2024 q1	2023 q4	2023 q3	2023 q2	2023 q1
FINANCIAL RESULTS: (\$Millions)							
1 Operating Revenues	13,779.7	12,788.9	59,221.1	58,230.2	57,434.0	55,881.3	54,093.2
2 Operating Expenses	13,142.2	12,199.6	52,796.2	51,853.7	50,861.2	49,700.7	48,741.1
3 Operating Profit (Loss)	637.6	589.3	6,424.9	6,376.6	6,572.8	6,180.6	5,352.2
4 Net Income (Loss)	113.9	-272.8	5,335.7	4,949.0	3,758.7	3,327.7	2,213.0
TRAFFIC: (Billions)							
5 RPMs - Scheduled Rev. Svc.	50.9	46.8	223.2	219.1	212.1	202.5	192.7
6 ASMs - Scheduled Rev. Svc.	61.3	57.3	259.6	255.7	246.9	236.2	225.5
7 Overall RTMs (All Svc.)	5.5	5.0	23.9	23.4	22.7	21.7	20.8
8 Overall ATMs (All Svc.)	9.2	8.5	39.0	38.3	36.9	35.2	33.4
YIELD & UNIT COST & PROFITS: (Cents)							
9 Operating Revenue per RTM	249.3	253.6	247.6	248.5	253.1	257.1	259.9
10 Operating Expense per RTM	237.8	241.9	220.7	221.3	224.2	228.6	234.2
11 Operating Profit (Loss) per RTM	11.5	11.7	26.9	27.2	29.0	28.4	25.7
12 Operating Expense per ATM	142.7	142.9	135.4	135.3	137.8	141.2	145.8
13 Passenger Revenue per RPM	18.02	17.95	18.17	18.16	18.33	18.53	18.47
FINANCIAL RATIOS:							
14 Operating Revenues to Total Investment	*	*	2.00	1.98	2.00	1.95	1.89
15 Times Interest Earned	*	*	7.77	6.89	5.58	4.90	3.67
16 Current Assets to Current Liabilities	*	*	0.40	0.38	0.44	0.45	0.47
17 No. of Days Cash Coverage of Cash Exp.	*	*	31.7	27.2	36.9	45.4	51.4
FINANCIAL PERCENTAGES: (%)							
18 Operating Profit (Loss) to Operating Revenue	4.6	4.6	10.8	11.0	11.4	11.1	9.9
19 Net Income to Stockholders Equity	*	*	57.03	58.36	52.63	55.21	44.47
20 Corporate Return on Investment	*	*	21.3	20.2	16.7	15.4	11.5
21 Debt to Total Investment	*	*	63.3	63.7	67.3	70.9	77.6
PASSENGER LOAD FACTOR: (Sch. Svc. %)							
22 Actual	83.1	81.6	86.0	85.7	85.9	85.7	85.5
23 Breakeven	83.1	79.5	77.3	76.4	75.6	75.9	76.8
Employment & Productivity:							
24 Employment, Total Weighted Avg CY	102,910	96,620	101,702	100,130	97,920	95,452	92,633
25 Overall RTM's per Employee (000)	53.7	52.2	235.2	234.0	231.7	227.8	224.7
CHANGE OVER COMPARABLE PERIOD 12 MONTHS EARLIER							
26 Operating Revenues (%)	7.7	36.6	9.5	14.9	23.0	33.5	53.9
27 Operating Expenses (%)	7.7	21.4	8.3	11.3	16.3	24.4	37.6
28 Operating Profit (Loss) (in Millions \$)	48.3	1,273.4	1,072.7	2,297.8	3,618.2	4,260.9	5,621.7
29 Net Income (Loss) (in Millions \$)	386.7	632.8	3,122.7	3,368.8	3,479.3	2,611.0	1,654.0
30 RPMs (Sch. Svc.) (%)	8.9	31.0	15.8	20.6	24.0	27.5	36.9
31 ASMs (Sch. Svc.) (%)	6.9	21.1	15.2	18.7	19.4	19.8	21.0
32 Operating Revenues per RTM (%)	-1.7	7.2	-4.7	-3.2	1.2	7.3	15.8
33 Operating Expense per RTM (%)	-1.7	-4.7	-5.7	-6.3	-4.3	0.0	3.6
34 Passenger Revenue per RPM (Sch. Svc.)(%)	0.4	16.6	-1.6	0.9	6.7	15.8	27.3

QUARTERLY FINANCIAL & TRAFFIC REVIEW

SYSTEM OPERATIONS

Envoy Air (MQ)

Items	Quarter Ended		12 Months Ended				
	2024 q1	2023 q1	2024 q1	2023 q4	2023 q3	2023 q2	2023 q1
FINANCIAL RESULTS: (\$Millions)							
1 Operating Revenues	484.4	443.8	1,823.6	1,783.0	1,764.2	1,793.9	1,762.8
2 Operating Expenses	499.3	443.3	1,828.9	1,772.9	1,752.1	1,763.9	1,740.0
3 Operating Profit (Loss)	-14.9	0.5	-5.3	10.1	12.1	30.0	22.8
4 Net Income (Loss)	-12.5	1.4	-10.1	3.8	8.5	22.4	17.6
TRAFFIC: (Billions)							
5 RPMs - Scheduled Rev. Svc.	2.2	1.7	8.3	7.9	7.5	7.4	7.6
6 ASMs - Scheduled Rev. Svc.	2.7	2.2	10.1	9.7	9.2	9.1	9.2
7 Overall RTMs (All Svc.)	0.2	0.2	0.8	0.8	0.7	0.7	0.8
8 Overall ATMs (All Svc.)	0.3	0.3	1.3	1.2	1.2	1.2	1.2
YIELD & UNIT COST & PROFITS: (Cents)							
9 Operating Revenue per RTM	223.2	256.6	218.8	225.9	235.4	242.2	232.2
10 Operating Expense per RTM	230.1	256.3	219.5	224.6	233.8	238.2	229.2
11 Operating Profit (Loss) per RTM	-6.9	0.3	-0.6	1.3	1.6	4.1	3.0
12 Operating Expense per ATM	146.9	151.5	142.6	143.5	147.8	150.0	145.2
13 Passenger Revenue per RPM	22.31	25.66	21.88	22.59	23.54	24.22	23.21
FINANCIAL RATIOS:							
14 Operating Revenues to Total Investment	*	*	13.70	13.22	13.41	13.94	14.14
15 Times Interest Earned	*	*	-6,578.18	4,464.53	19,456.58	109,797.01	24,828.59
16 Current Assets to Current Liabilities	*	*	0.54	0.56	0.53	0.59	0.55
17 No. of Days Cash Coverage of Cash Exp.	*	*	0.6	0.4	0.4	0.4	0.0
FINANCIAL PERCENTAGES: (%)							
18 Operating Profit (Loss) to Operating Revenue	-3.1	0.1	-0.3	0.6	0.7	1.7	1.3
19 Net Income to Stockholders Equity	*	*	-7.60	2.83	6.46	17.40	14.11
20 Corporate Return on Investment	*	*	-7.6	2.8	6.5	17.4	14.1
21 Debt to Total Investment	*	*					
PASSENGER LOAD FACTOR: (Sch. Svc. %)							
22 Actual	80.7	77.0	82.4	81.6	81.3	81.5	82.3
23 Breakeven	83.5	76.9	82.6	81.1	80.6	80.0	81.2
Employment & Productivity:							
24 Employment, Total Weighted Avg CY	15,433	14,417	15,118	14,864	14,629	14,353	14,050
25 Overall RTM's per Employee (000)	14.1	12.0	55.1	53.1	51.2	51.6	54.0
CHANGE OVER COMPARABLE PERIOD 12 MONTHS EARLIER							
26 Operating Revenues (%)	9.1	14.0	3.4	4.4	5.5	19.3	31.0
27 Operating Expenses (%)	12.6	10.7	5.1	4.5	5.2	9.6	14.2
28 Operating Profit (Loss) (in Millions \$)	-15.5	11.9	-28.1	-0.8	4.8	135.3	199.7
29 Net Income (Loss) (in Millions \$)	-13.9	10.2	-27.7	-3.5	4.4	66.2	54.2
30 RPMs (Sch. Svc.) (%)	25.5	-5.3	9.8	2.7	-5.7	-7.7	-4.1
31 ASMs (Sch. Svc.) (%)	19.7	-7.1	9.7	3.0	-5.5	-8.8	-7.4
32 Operating Revenues per RTM (%)	-13.0	20.4	-5.7	1.7	11.9	29.3	36.6
33 Operating Expense per RTM (%)	-10.2	16.9	-4.2	1.8	11.6	18.8	19.1
34 Passenger Revenue per RPM (Sch. Svc.)(%)	-13.0	21.0	-5.7	1.8	12.0	29.5	36.8

QUARTERLY FINANCIAL & TRAFFIC REVIEW

SYSTEM OPERATIONS

Frontier Airlines Inc. (F9)

Items	Quarter Ended		12 Months Ended				
	2024 q1	2023 q1	2024 q1	2023 q4	2023 q3	2023 q2	2023 q1
FINANCIAL RESULTS: (\$Millions)							
1 Operating Revenues	865.4	848.3	3,606.0	3,589.0	3,603.6	3,627.1	3,569.2
2 Operating Expenses	895.7	873.4	3,613.4	3,591.1	3,558.2	3,485.0	3,494.9
3 Operating Profit (Loss)	-30.3	-25.0	-7.4	-2.1	45.4	142.1	74.3
4 Net Income (Loss)	-25.4	-13.0	-20.5	-8.1	67.0	119.2	64.1
TRAFFIC: (Billions)							
5 RPMs - Scheduled Rev. Svc.	6.9	7.3	30.4	30.8	30.1	29.0	27.4
6 ASMs - Scheduled Rev. Svc.	9.4	8.8	38.4	37.8	36.4	34.8	33.1
7 Overall RTMs (All Svc.)	0.7	0.7	3.0	3.1	3.0	2.9	2.7
8 Overall ATMs (All Svc.)	0.9	0.9	3.8	3.8	3.6	3.5	3.3
YIELD & UNIT COST & PROFITS: (Cents)							
9 Operating Revenue per RTM	126.2	117.0	118.7	116.6	119.8	125.3	130.3
10 Operating Expense per RTM	130.6	120.4	119.0	116.7	118.3	120.4	127.6
11 Operating Profit (Loss) per RTM	-4.4	-3.4	-0.2	-0.1	1.5	4.9	2.7
12 Operating Expense per ATM	95.0	99.6	94.0	95.0	97.6	100.2	105.7
13 Passenger Revenue per RPM	7.73	7.12	7.22	7.08	7.34	7.86	7.92
FINANCIAL RATIOS:							
14 Operating Revenues to Total Investment	*	*	3.75	3.75	3.85	4.06	4.22
15 Times Interest Earned	*	*	0.22	0.06	-1.44	-5.90	-4.70
16 Current Assets to Current Liabilities	*	*	0.50	0.52	0.55	0.61	0.61
17 No. of Days Cash Coverage of Cash Exp.	*	*	63.7	62.7	66.4	82.6	83.6
FINANCIAL PERCENTAGES: (%)							
18 Operating Profit (Loss) to Operating Revenue	-3.5	-2.9	-0.2	-0.1	1.3	3.9	2.1
19 Net Income to Stockholders Equity	*	*	-4.05	-1.59	13.43	24.97	14.36
20 Corporate Return on Investment	*	*	-5.6	-4.5	3.8	10.6	5.7
21 Debt to Total Investment	*	*	49.6	48.7	48.0	43.7	47.1
PASSENGER LOAD FACTOR: (Sch. Svc. %)							
22 Actual	72.7	82.8	79.0	81.4	82.5	83.2	82.9
23 Breakeven	82.8	90.0	85.0	86.6	84.8	80.5	88.7
Employment & Productivity:							
24 Employment, Total Weighted Avg CY	7,484	6,528	7,024	6,785	6,601	6,375	6,136
25 Overall RTM's per Employee (000)	91.6	111.1	432.4	453.5	455.6	454.2	446.3
CHANGE OVER COMPARABLE PERIOD 12 MONTHS EARLIER							
26 Operating Revenues (%)	2.0	40.2	1.0	7.9	18.9	31.7	49.1
27 Operating Expenses (%)	2.6	16.5	3.4	6.5	11.0	16.1	28.6
28 Operating Profit (Loss) (in Millions \$)	-5.3	119.7	-81.8	43.3	220.9	389.5	397.2
29 Net Income (Loss) (in Millions \$)	-12.4	101.9	-84.6	29.7	197.9	247.5	190.0
30 RPMs (Sch. Svc.) (%)	-5.5	31.6	10.9	20.0	23.6	23.1	20.8
31 ASMs (Sch. Svc.) (%)	7.6	18.0	16.3	19.1	18.0	14.6	11.3
32 Operating Revenues per RTM (%)	7.9	6.6	-8.9	-10.1	-3.8	7.0	23.4
33 Operating Expense per RTM (%)	8.5	-11.5	-6.8	-11.2	-10.2	-5.7	6.5
34 Passenger Revenue per RPM (Sch. Svc.)(%)	8.6	39.3	-8.8	-6.0	8.0	36.9	60.3

QUARTERLY FINANCIAL & TRAFFIC REVIEW

SYSTEM OPERATIONS

Hawaiian Airlines Inc. (HA)

Items	Quarter Ended		12 Months Ended				
	2024 q1	2023 q1	2024 q1	2023 q4	2023 q3	2023 q2	2023 q1
FINANCIAL RESULTS: (\$Millions)							
1 Operating Revenues	645.5	611.7	2,749.4	2,715.6	2,775.9	2,788.6	2,771.5
2 Operating Expenses	792.1	739.1	3,065.1	3,012.0	2,981.9	2,938.0	2,940.8
3 Operating Profit (Loss)	-146.6	-127.3	-315.7	-296.4	-206.1	-149.4	-169.2
4 Net Income (Loss)	-135.4	-107.2	-291.2	-263.0	-213.7	-169.3	-197.4
TRAFFIC: (Billions)							
5 RPMs - Scheduled Rev. Svc.	4.1	3.8	17.1	16.9	16.6	16.3	15.8
6 ASMs - Scheduled Rev. Svc.	5.0	4.9	20.3	20.2	20.0	19.8	19.3
7 Overall RTMs (All Svc.)	0.5	0.4	2.0	1.9	1.9	1.9	1.8
8 Overall ATMs (All Svc.)	0.9	0.9	3.6	3.5	3.5	3.4	3.3
YIELD & UNIT COST & PROFITS: (Cents)							
9 Operating Revenue per RTM	135.5	138.8	139.9	140.7	146.3	149.4	152.6
10 Operating Expense per RTM	166.2	167.7	156.0	156.1	157.1	157.4	161.9
11 Operating Profit (Loss) per RTM	-30.8	-28.9	-16.1	-15.4	-10.9	-8.0	-9.3
12 Operating Expense per ATM	87.2	86.6	85.1	84.9	85.5	85.4	88.1
13 Passenger Revenue per RPM	13.70	13.57	13.97	13.95	14.41	14.66	14.89
FINANCIAL RATIOS:							
14 Operating Revenues to Total Investment	*	*	1.51	1.44	1.43	1.40	1.35
15 Times Interest Earned	*	*	-3.26	-3.04	-2.17	-1.47	-1.79
16 Current Assets to Current Liabilities	*	*	0.89	1.02	1.15	1.19	1.24
17 No. of Days Cash Coverage of Cash Exp.	*	*	112.9	116.4	146.8	172.2	178.6
FINANCIAL PERCENTAGES: (%)							
18 Operating Profit (Loss) to Operating Revenue	-22.7	-20.8	-11.5	-10.9	-7.4	-5.4	-6.1
19 Net Income to Stockholders Equity	*	*	-53.00	-42.15	-31.58	-23.58	-25.97
20 Corporate Return on Investment	*	*	-11.6	-9.6	-6.7	-4.2	-5.3
21 Debt to Total Investment	*	*	78.0	70.8	67.7	66.7	66.4
PASSENGER LOAD FACTOR: (Sch. Svc. %)							
22 Actual	80.7	78.2	84.1	83.5	83.0	82.2	81.8
23 Breakeven	109.7	105.3	102.2	101.1	96.9	93.9	94.4
Employment & Productivity:							
24 Employment, Total Weighted Avg CY	6,952	6,756	6,914	6,865	6,791	6,697	6,566
25 Overall RTM's per Employee (000)	68.5	65.2	284.2	281.1	279.5	278.7	276.6
CHANGE OVER COMPARABLE PERIOD 12 MONTHS EARLIER							
26 Operating Revenues (%)	5.5	28.4	-0.8	3.0	15.6	28.6	46.8
27 Operating Expenses (%)	7.2	18.8	4.2	6.7	13.0	20.2	33.4
28 Operating Profit (Loss) (in Millions \$)	-19.3	18.4	-146.5	-108.8	33.0	126.7	146.7
29 Net Income (Loss) (in Millions \$)	-28.2	13.7	-93.8	-51.9	39.4	65.0	-0.4
30 RPMs (Sch. Svc.) (%)	5.9	29.2	8.1	12.9	19.3	25.3	32.8
31 ASMs (Sch. Svc.) (%)	2.7	15.8	5.3	8.4	11.8	15.6	19.3
32 Operating Revenues per RTM (%)	-2.4	2.3	-8.3	-7.8	-2.1	2.8	11.2
33 Operating Expense per RTM (%)	-0.9	-5.4	-3.7	-4.6	-4.4	-3.9	1.1
34 Passenger Revenue per RPM (Sch. Svc.)(%)	0.9	8.4	-6.2	-5.5	1.8	8.4	18.0

QUARTERLY FINANCIAL & TRAFFIC REVIEW

SYSTEM OPERATIONS

JetBlue Airways (B6)

Items	Quarter Ended		12 Months Ended				
	2024 q1	2023 q1	2024 q1	2023 q4	2023 q3	2023 q2	2023 q1
FINANCIAL RESULTS: (\$Millions)							
1 Operating Revenues	2,208.7	2,327.6	9,496.6	9,615.4	9,705.3	9,914.7	9,749.7
2 Operating Expenses	2,332.9	2,554.3	9,519.8	9,741.2	9,703.5	9,642.0	9,843.2
3 Operating Profit (Loss)	-124.2	-226.7	-23.2	-125.7	1.7	272.7	-93.5
4 Net Income (Loss)	-715.9	-191.5	-834.6	-310.3	-182.8	26.4	-299.0
TRAFFIC: (Billions)							
5 RPMs - Scheduled Rev. Svc.	13.0	13.4	56.4	56.8	56.8	55.9	55.0
6 ASMs - Scheduled Rev. Svc.	16.3	16.8	68.1	68.5	68.0	66.9	65.9
7 Overall RTMs (All Svc.)	1.3	1.3	5.6	5.7	5.7	5.6	5.5
8 Overall ATMs (All Svc.)	2.2	2.3	9.2	9.3	9.2	9.0	8.9
YIELD & UNIT COST & PROFITS: (Cents)							
9 Operating Revenue per RTM	169.6	173.6	168.2	169.2	170.6	177.0	176.8
10 Operating Expense per RTM	179.2	190.5	168.7	171.4	170.5	172.1	178.5
11 Operating Profit (Loss) per RTM	-9.5	-16.9	-0.4	-2.2	0.0	4.9	-1.7
12 Operating Expense per ATM	105.2	113.2	103.3	105.3	105.9	107.2	111.1
13 Passenger Revenue per RPM	14.53	15.00	14.47	14.58	14.72	15.34	15.30
FINANCIAL RATIOS:							
14 Operating Revenues to Total Investment	*	*	1.27	1.30	1.34	1.38	1.35
15 Times Interest Earned	*	*	-3.21	-0.75	-0.27	1.38	-0.96
16 Current Assets to Current Liabilities	*	*	0.54	0.60	0.53	0.57	0.52
17 No. of Days Cash Coverage of Cash Exp.	*	*	64.2	62.7	55.4	67.3	60.6
FINANCIAL PERCENTAGES: (%)							
18 Operating Profit (Loss) to Operating Revenue	-5.6	-9.7	-0.2	-1.3	0.0	2.8	-1.0
19 Net Income to Stockholders Equity	*	*	-25.58	-9.00	-5.25	0.76	-8.55
20 Corporate Return on Investment	*	*	-8.5	-1.6	-0.2	2.6	-2.0
21 Debt to Total Investment	*	*	65.6	58.6	53.9	51.4	51.5
PASSENGER LOAD FACTOR: (Sch. Svc. %)							
22 Actual	79.7	79.8	82.8	82.8	83.6	83.6	83.5
23 Breakeven	92.8	96.3	90.1	91.1	90.3	87.2	91.1
Employment & Productivity:							
24 Employment, Total Weighted Avg CY	21,195	21,050	21,345	21,309	21,199	21,043	20,776
25 Overall RTM's per Employee (000)	61.4	63.7	264.4	266.7	268.4	266.2	265.4
CHANGE OVER COMPARABLE PERIOD 12 MONTHS EARLIER							
26 Operating Revenues (%)	-5.1	34.1	-2.6	5.0	13.2	24.1	38.5
27 Operating Expenses (%)	-8.7	21.3	-3.3	3.7	7.4	12.3	27.2
28 Operating Profit (Loss) (in Millions \$)	102.5	142.4	70.2	110.2	459.5	870.3	606.2
29 Net Income (Loss) (in Millions \$)	-524.3	63.1	-535.7	51.8	331.8	468.4	-108.5
30 RPMs (Sch. Svc.) (%)	-2.9	22.5	2.5	8.0	12.6	13.1	18.9
31 ASMs (Sch. Svc.) (%)	-2.8	9.1	3.3	6.3	7.5	5.9	9.1
32 Operating Revenues per RTM (%)	-2.3	9.6	-4.9	-2.7	0.7	10.0	16.7
33 Operating Expense per RTM (%)	-5.9	-0.8	-5.5	-3.9	-4.4	-0.5	7.2
34 Passenger Revenue per RPM (Sch. Svc.)(%)	-3.1	13.4	-5.4	-2.4	1.9	12.7	20.5

QUARTERLY FINANCIAL & TRAFFIC REVIEW

SYSTEM OPERATIONS

Republic Airline (YX)

Items	Quarter Ended		12 Months Ended				
	2024 q1	2023 q1	2024 q1	2023 q4	2023 q3	2023 q2	2023 q1
FINANCIAL RESULTS: (\$Millions)							
1 Operating Revenues	343.7	364.9	1,393.5	1,414.6	1,392.2	1,372.9	1,357.2
2 Operating Expenses	308.8	327.7	1,258.0	1,277.0	1,276.3	1,237.3	1,214.1
3 Operating Profit (Loss)	35.0	37.2	135.5	137.7	115.8	135.6	143.1
4 Net Income (Loss)	16.4	20.6	46.8	51.0	56.8	72.0	79.6
TRAFFIC: (Billions)							
5 RPMs - Scheduled Rev. Svc.	2.0	1.9	8.6	8.5	8.3	8.3	8.7
6 ASMs - Scheduled Rev. Svc.	2.7	2.9	11.0	11.1	10.9	11.3	11.8
7 Overall RTMs (All Svc.)	0.2	0.2	0.9	0.9	0.8	0.8	0.9
8 Overall ATMs (All Svc.)	0.4	0.4	1.6	1.6	1.6	1.6	1.7
YIELD & UNIT COST & PROFITS: (Cents)							
9 Operating Revenue per RTM	171.9	187.8	162.0	165.5	168.6	164.7	156.4
10 Operating Expense per RTM	154.4	168.7	146.2	149.4	154.6	148.4	140.0
11 Operating Profit (Loss) per RTM	17.5	19.1	15.7	16.1	14.0	16.3	16.5
12 Operating Expense per ATM	78.3	79.2	79.3	79.5	80.7	76.2	71.7
13 Passenger Revenue per RPM	16.84	18.59	15.91	16.30	16.63	16.20	15.36
FINANCIAL RATIOS:							
14 Operating Revenues to Total Investment	*	*	0.68	0.69	0.70	0.70	0.68
15 Times Interest Earned	*	*	2.63	2.93	2.86	3.55	3.73
16 Current Assets to Current Liabilities	*	*	1.03	1.00	1.10	0.78	0.71
17 No. of Days Cash Coverage of Cash Exp.	*	*	97.1	109.0	122.4	83.3	58.4
FINANCIAL PERCENTAGES: (%)							
18 Operating Profit (Loss) to Operating Revenue	10.2	10.2	9.7	9.7	8.3	9.9	10.5
19 Net Income to Stockholders Equity	*	*	4.44	4.91	5.52	7.12	8.04
20 Corporate Return on Investment	*	*	5.0	4.9	4.9	5.6	6.0
21 Debt to Total Investment	*	*	48.6	51.1	50.7	46.2	47.3
PASSENGER LOAD FACTOR: (Sch. Svc. %)							
22 Actual	73.3	67.7	78.5	77.0	75.4	74.0	73.7
23 Breakeven	64.8	60.0	69.8	68.5	68.4	65.7	64.9
Employment & Productivity:							
24 Employment, Total Weighted Avg CY	5,413	5,783	5,471	5,563	5,688	5,854	5,996
25 Overall RTM's per Employee (000)	36.9	33.6	157.3	153.6	145.2	142.4	144.7
CHANGE OVER COMPARABLE PERIOD 12 MONTHS EARLIER							
26 Operating Revenues (%)	-5.8	11.0	2.7	7.1	4.6	6.4	10.6
27 Operating Expenses (%)	-5.8	10.2	3.6	7.9	10.3	6.6	7.2
28 Operating Profit (Loss) (in Millions \$)	-2.2	6.0	-7.6	0.6	-58.5	6.6	48.2
29 Net Income (Loss) (in Millions \$)	-4.2	5.1	-32.8	-23.5	-50.7	-25.1	-61.5
30 RPMs (Sch. Svc.) (%)	2.9	3.0	-0.8	-0.8	-10.4	-16.6	-14.4
31 ASMs (Sch. Svc.) (%)	-4.8	-10.7	-6.8	-8.3	-16.1	-18.8	-16.5
32 Operating Revenues per RTM (%)	-8.5	7.7	3.5	8.0	16.8	27.6	29.2
33 Operating Expense per RTM (%)	-8.5	6.9	4.5	8.8	23.2	27.8	25.3
34 Passenger Revenue per RPM (Sch. Svc.)(%)	-9.4	9.5	3.6	8.8	17.9	28.3	30.0

QUARTERLY FINANCIAL & TRAFFIC REVIEW

SYSTEM OPERATIONS

SkyWest Airlines Inc. (OO)

Items	Quarter Ended		12 Months Ended				
	2024 q1	2023 q1	2024 q1	2023 q4	2023 q3	2023 q2	2023 q1
FINANCIAL RESULTS: (\$Millions)							
1 Operating Revenues	637.5	568.2	2,455.2	2,385.9	2,353.7	2,379.3	2,457.4
2 Operating Expenses	632.7	629.1	2,542.9	2,539.2	2,509.4	2,514.6	2,533.1
3 Operating Profit (Loss)	4.7	-60.9	-87.7	-153.3	-155.7	-135.4	-75.7
4 Net Income (Loss)	3.1	-51.5	-49.9	-104.4	-115.9	-100.9	-58.7
TRAFFIC: (Billions)							
5 RPMs - Scheduled Rev. Svc.	4.4	4.2	18.3	18.1	18.2	19.0	20.1
6 ASMs - Scheduled Rev. Svc.	5.5	5.4	22.3	22.1	22.2	23.0	24.2
7 Overall RTMs (All Svc.)	0.4	0.4	1.8	1.8	1.8	1.9	2.0
8 Overall ATMs (All Svc.)	0.6	0.7	2.7	2.8	2.9	3.1	3.3
YIELD & UNIT COST & PROFITS: (Cents)							
9 Operating Revenue per RTM	145.7	135.6	134.0	131.6	129.0	125.1	122.2
10 Operating Expense per RTM	144.6	150.1	138.8	140.0	137.5	132.3	125.9
11 Operating Profit (Loss) per RTM	1.1	-14.5	-4.8	-8.5	-8.5	-7.1	-3.8
12 Operating Expense per ATM	98.1	85.6	93.3	90.2	86.0	80.3	76.2
13 Passenger Revenue per RPM	13.18	12.35	12.15	11.95	11.81	11.56	11.29
FINANCIAL RATIOS:							
14 Operating Revenues to Total Investment	*	*	0.45	0.43	0.42	0.42	0.43
15 Times Interest Earned	*	*	-3.82	-7.60	-8.22	-7.23	-4.15
16 Current Assets to Current Liabilities	*	*	0.84	0.93	0.99	1.04	1.12
17 No. of Days Cash Coverage of Cash Exp.	*	*	125.1	127.1	127.1	134.0	144.3
FINANCIAL PERCENTAGES: (%)							
18 Operating Profit (Loss) to Operating Revenue	0.7	-10.7	-3.6	-6.4	-6.6	-5.7	-3.1
19 Net Income to Stockholders Equity	*	*	-3.38	-6.74	-7.10	-5.94	-3.35
20 Corporate Return on Investment	*	*	-0.6	-1.6	-1.8	-1.5	-0.8
21 Debt to Total Investment	*	*	73.7	73.9	73.2	72.5	71.1
PASSENGER LOAD FACTOR: (Sch. Svc. %)							
22 Actual	78.9	78.2	82.0	81.9	82.4	82.5	83.0
23 Breakeven	79.5	90.4	87.0	89.8	90.6	89.8	87.7
Employment & Productivity:							
24 Employment, Total Weighted Avg CY	12,631	12,445	12,437	12,390	12,472	12,571	12,832
25 Overall RTM's per Employee (000)	34.6	33.7	147.3	146.3	146.3	151.2	156.8
CHANGE OVER COMPARABLE PERIOD 12 MONTHS EARLIER							
26 Operating Revenues (%)	12.2	-5.8	-0.1	-4.3	-12.1	-13.6	-10.0
27 Operating Expenses (%)	0.6	1.3	0.4	0.6	-7.1	-11.1	-12.6
28 Operating Profit (Loss) (in Millions \$)	65.6	-42.9	-12.0	-120.5	-132.4	-60.5	90.9
29 Net Income (Loss) (in Millions \$)	54.6	-36.2	8.8	-81.9	-99.4	-63.6	-34.8
30 RPMs (Sch. Svc.) (%)	4.4	-11.5	-9.0	-12.3	-15.9	-14.5	-6.8
31 ASMs (Sch. Svc.) (%)	3.5	-13.7	-7.9	-11.7	-16.4	-16.6	-12.2
32 Operating Revenues per RTM (%)	7.5	6.5	9.7	9.1	4.5	1.0	-3.5
33 Operating Expense per RTM (%)	-3.7	14.5	10.3	14.6	10.4	4.0	-6.2
34 Passenger Revenue per RPM (Sch. Svc.)(%)	6.8	5.4	7.7	6.9	2.8	0.2	-4.0

QUARTERLY FINANCIAL & TRAFFIC REVIEW

SYSTEM OPERATIONS

Southwest Airlines Co. (WN)

Items	Quarter Ended		12 Months Ended				
	2024 q1	2023 q1	2024 q1	2023 q4	2023 q3	2023 q2	2023 q1
FINANCIAL RESULTS: (\$Millions)							
1 Operating Revenues	6,328.6	5,706.0	26,713.1	26,090.5	25,440.3	25,135.4	24,826.7
2 Operating Expenses	6,721.3	5,990.3	26,597.8	25,866.8	25,197.8	24,615.1	23,943.1
3 Operating Profit (Loss)	-392.7	-284.2	115.3	223.8	242.5	520.2	883.5
4 Net Income (Loss)	-230.7	-159.5	393.5	464.8	496.7	580.7	657.5
TRAFFIC: (Billions)							
5 RPMs - Scheduled Rev. Svc.	33.1	29.5	139.8	136.3	132.0	129.9	126.9
6 ASMs - Scheduled Rev. Svc.	42.2	38.1	174.5	170.3	162.3	157.4	152.1
7 Overall RTMs (All Svc.)	3.3	3.0	14.1	13.7	13.3	13.1	12.8
8 Overall ATMs (All Svc.)	5.2	4.7	21.4	20.9	19.9	19.3	18.6
YIELD & UNIT COST & PROFITS: (Cents)							
9 Operating Revenue per RTM	189.7	191.2	189.4	189.8	191.0	191.7	193.7
10 Operating Expense per RTM	201.4	200.8	188.6	188.2	189.2	187.7	186.8
11 Operating Profit (Loss) per RTM	-11.8	-9.5	0.8	1.6	1.8	4.0	6.9
12 Operating Expense per ATM	129.6	128.2	124.1	123.7	126.5	127.5	128.4
13 Passenger Revenue per RPM	16.44	16.48	16.56	16.57	16.62	16.70	16.90
FINANCIAL RATIOS:							
14 Operating Revenues to Total Investment	*	*	1.44	1.40	1.34	1.29	1.25
15 Times Interest Earned	*	*	3.30	3.68	3.66	3.96	4.26
16 Current Assets to Current Liabilities	*	*	1.09	1.14	1.21	1.25	1.26
17 No. of Days Cash Coverage of Cash Exp.	*	*	153.4	172.1	180.6	191.9	189.0
FINANCIAL PERCENTAGES: (%)							
18 Operating Profit (Loss) to Operating Revenue	-6.2	-5.0	0.4	0.9	1.0	2.1	3.6
19 Net Income to Stockholders Equity	*	*	3.72	4.36	4.62	5.39	6.15
20 Corporate Return on Investment	*	*	3.4	3.7	3.9	4.3	4.7
21 Debt to Total Investment	*	*	44.0	43.2	42.0	42.7	43.8
PASSENGER LOAD FACTOR: (Sch. Svc. %)							
22 Actual	78.3	77.6	80.1	80.0	81.3	82.5	83.4
23 Breakeven	84.7	82.7	79.7	79.2	80.3	80.4	79.6
Employment & Productivity:							
24 Employment, Total Weighted Avg CY	74,806	68,827	73,467	71,972	69,775	67,345	64,957
25 Overall RTM's per Employee (000)	44.6	43.4	191.9	191.0	190.9	194.7	197.3
CHANGE OVER COMPARABLE PERIOD 12 MONTHS EARLIER							
26 Operating Revenues (%)	10.9	21.6	7.6	9.6	12.1	18.8	34.7
27 Operating Expenses (%)	12.2	23.6	11.1	13.5	19.4	23.2	29.1
28 Operating Profit (Loss) (in Millions \$)	-108.5	-133.3	-768.2	-793.1	-1,354.7	-652.2	999.6
29 Net Income (Loss) (in Millions \$)	-71.2	118.4	-264.0	-74.4	-330.4	-415.2	74.1
30 RPMs (Sch. Svc.) (%)	12.0	11.6	10.2	10.0	8.0	8.2	10.2
31 ASMs (Sch. Svc.) (%)	11.0	10.7	14.7	14.7	9.9	7.0	6.2
32 Operating Revenues per RTM (%)	-0.8	9.1	-2.2	-0.3	4.0	10.0	22.6
33 Operating Expense per RTM (%)	0.3	11.0	1.0	3.2	10.8	14.0	17.5
34 Passenger Revenue per RPM (Sch. Svc.)(%)	-0.2	10.4	-2.0	-0.1	3.7	9.8	23.8

QUARTERLY FINANCIAL & TRAFFIC REVIEW

SYSTEM OPERATIONS

Spirit Air Lines (NK)

Items	Quarter Ended		12 Months Ended				
	2024 q1	2023 q1	2024 q1	2023 q4	2023 q3	2023 q2	2023 q1
FINANCIAL RESULTS: (\$Millions)							
1 Operating Revenues	1,265.5	1,349.8	5,278.3	5,362.5	5,432.1	5,516.7	5,450.9
2 Operating Expenses	1,472.9	1,462.2	5,869.0	5,858.3	6,018.8	5,951.0	5,950.8
3 Operating Profit (Loss)	-207.3	-112.4	-590.7	-495.8	-586.7	-434.3	-499.8
4 Net Income (Loss)	-142.6	-103.9	-486.2	-447.5	-534.5	-413.3	-463.4
TRAFFIC: (Billions)							
5 RPMs - Scheduled Rev. Svc.	10.9	10.7	45.4	45.2	43.8	42.7	41.4
6 ASMs - Scheduled Rev. Svc.	13.5	13.2	55.9	55.6	53.8	52.1	50.1
7 Overall RTMs (All Svc.)	1.1	1.1	4.5	4.5	4.4	4.3	4.1
8 Overall ATMs (All Svc.)	1.3	1.3	5.6	5.6	6.6	6.4	6.2
YIELD & UNIT COST & PROFITS: (Cents)							
9 Operating Revenue per RTM	116.3	126.4	116.2	118.6	123.9	129.1	131.7
10 Operating Expense per RTM	135.3	137.0	129.2	129.5	137.3	139.2	143.7
11 Operating Profit (Loss) per RTM	-19.0	-10.5	-13.0	-11.0	-13.4	-10.2	-12.1
12 Operating Expense per ATM	109.2	110.7	105.0	105.3	91.1	92.3	95.4
13 Passenger Revenue per RPM	5.64	6.54	5.74	5.96	6.37	6.87	7.20
FINANCIAL RATIOS:							
14 Operating Revenues to Total Investment	*	*	0.67	0.68	0.71	0.74	0.74
15 Times Interest Earned	*	*	-11.40	-8.50	-7.57	-5.77	-5.40
16 Current Assets to Current Liabilities	*	*	0.97	0.90	0.91	1.05	1.09
17 No. of Days Cash Coverage of Cash Exp.	*	*	66.6	72.3	67.2	86.8	98.1
FINANCIAL PERCENTAGES: (%)							
18 Operating Profit (Loss) to Operating Revenue	-16.4	-8.3	-11.2	-9.2	-10.8	-7.9	-9.2
19 Net Income to Stockholders Equity	*	*	-38.02	-32.13	-34.85	-25.12	-26.70
20 Corporate Return on Investment	*	*	-5.6	-5.0	-6.0	-4.5	-5.0
21 Debt to Total Investment	*	*	87.7	85.9	83.4	81.1	80.9
PASSENGER LOAD FACTOR: (Sch. Svc. %)							
22 Actual	80.7	80.8	81.3	81.3	81.6	82.0	82.7
23 Breakeven	111.3	95.6	102.1	98.3	100.9	95.8	98.4
Employment & Productivity:							
24 Employment, Total Weighted Avg CY	12,745	12,182	12,853	12,712	12,318	11,868	11,386
25 Overall RTM's per Employee (000)	85.4	87.6	353.5	355.8	355.9	360.2	363.6
CHANGE OVER COMPARABLE PERIOD 12 MONTHS EARLIER							
26 Operating Revenues (%)	-6.2	39.5	-3.2	5.8	16.5	30.0	45.9
27 Operating Expenses (%)	0.7	24.0	-1.4	3.4	19.9	28.4	45.0
28 Operating Profit (Loss) (in Millions \$)	-94.9	99.1	-90.9	103.2	-231.9	-43.6	-132.1
29 Net Income (Loss) (in Millions \$)	-38.7	90.8	-22.8	106.7	-163.8	-93.8	91.6
30 RPMs (Sch. Svc.) (%)	1.9	18.0	9.7	13.7	13.8	15.6	16.9
31 ASMs (Sch. Svc.) (%)	2.1	12.7	11.7	14.5	13.9	13.0	12.5
32 Operating Revenues per RTM (%)	-8.0	18.3	-11.8	-6.9	2.3	12.5	24.8
33 Operating Expense per RTM (%)	-1.2	5.2	-10.1	-9.1	5.3	11.1	24.1
34 Passenger Revenue per RPM (Sch. Svc.)(%)	-13.8	21.5	-20.2	-14.5	-3.5	11.9	33.1

QUARTERLY FINANCIAL & TRAFFIC REVIEW

SYSTEM OPERATIONS

Sun Country Airlines d/b/a MN Airlines (SY)^

Items	Quarter Ended		12 Months Ended				
	2024 q1	2023 q1	2024 q1	2023 q4	2023 q3	2023 q2	2023 q1
FINANCIAL RESULTS: (\$Millions)							
1 Operating Revenues	311.5	294.1	1,067.0	1,049.6	1,031.2	1,004.1	962.0
2 Operating Expenses	256.3	238.3	940.1	922.1	905.7	882.2	872.4
3 Operating Profit (Loss)	55.2	55.8	126.9	127.5	125.5	121.9	89.7
4 Net Income (Loss)	35.2	38.7	69.4	72.9	74.1	76.5	51.9
TRAFFIC: (Billions)							
5 RPMs - Scheduled Rev. Svc.	1.7	1.4	5.4	5.2	5.0	4.9	4.8
6 ASMs - Scheduled Rev. Svc.	1.9	1.6	6.3	6.0	5.8	5.6	5.6
7 Overall RTMs (All Svc.)	0.2	0.2	0.8	0.7	0.7	0.7	0.7
8 Overall ATMs (All Svc.)	0.3	0.3	1.3	1.3	1.2	1.2	1.2
YIELD & UNIT COST & PROFITS: (Cents)							
9 Operating Revenue per RTM	144.5	152.0	138.7	140.4	142.5	143.3	141.1
10 Operating Expense per RTM	118.9	123.2	122.2	123.4	125.1	125.9	127.9
11 Operating Profit (Loss) per RTM	25.6	28.8	16.5	17.1	17.3	17.4	13.1
12 Operating Expense per ATM	74.0	75.8	72.8	73.2	73.8	73.9	74.8
13 Passenger Revenue per RPM	9.80	11.97	9.38	9.96	10.47	10.86	10.96
FINANCIAL RATIOS:							
14 Operating Revenues to Total Investment	*	*	0.80	0.80	0.79	0.78	0.77
15 Times Interest Earned	*	*	3.02	3.23	3.46	3.79	3.15
16 Current Assets to Current Liabilities	*	*	0.61	0.65	0.70	0.79	0.89
17 No. of Days Cash Coverage of Cash Exp.	*	*	74.2	89.6	84.8	114.5	121.3
FINANCIAL PERCENTAGES: (%)							
18 Operating Profit (Loss) to Operating Revenue	17.7	19.0	11.9	12.1	12.2	12.1	9.3
19 Net Income to Stockholders Equity	*	*	13.16	14.09	14.35	14.94	10.33
20 Corporate Return on Investment	*	*	8.6	8.8	8.7	8.7	6.7
21 Debt to Total Investment	*	*	60.1	60.9	61.3	60.4	59.9
PASSENGER LOAD FACTOR: (Sch. Svc. %)							
22 Actual	87.4	88.1	86.2	86.4	86.3	86.5	86.1
23 Breakeven	76.8	68.0	87.0	83.9	81.3	78.9	80.3
Employment & Productivity:							
24 Employment, Total Weighted Avg CY	2,524	2,269	2,434	2,371	2,306	2,226	2,137
25 Overall RTM's per Employee (000)	85.4	85.3	316.1	315.2	313.9	314.8	319.1
CHANGE OVER COMPARABLE PERIOD 12 MONTHS EARLIER							
26 Operating Revenues (%)	5.9	29.8	10.9	17.3	22.8	26.8	33.3
27 Operating Expenses (%)	7.5	16.4	7.8	9.9	14.8	20.1	32.5
28 Operating Profit (Loss) (in Millions \$)	-0.6	34.0	37.2	71.8	74.7	64.5	26.2
29 Net Income (Loss) (in Millions \$)	-3.5	35.1	17.4	56.1	65.6	64.2	-16.3
30 RPMs (Sch. Svc.) (%)	15.6	7.0	13.3	10.8	12.5	11.5	14.9
31 ASMs (Sch. Svc.) (%)	16.5	-3.5	13.1	7.2	6.7	2.6	4.0
32 Operating Revenues per RTM (%)	-4.9	16.7	-1.7	4.0	8.0	11.9	15.2
33 Operating Expense per RTM (%)	-3.5	4.7	-4.5	-2.5	1.0	6.0	14.5
34 Passenger Revenue per RPM (Sch. Svc.)(%)	-18.2	14.1	-14.4	-5.3	0.7	7.7	15.2

QUARTERLY FINANCIAL & TRAFFIC REVIEW

SYSTEM OPERATIONS

United Air Lines Inc. (UA)

Items	Quarter Ended		12 Months Ended				
	2024 q1	2023 q1	2024 q1	2023 q4	2023 q3	2023 q2	2023 q1
FINANCIAL RESULTS: (\$Millions)							
1 Operating Revenues	12,539.0	11,429.0	54,826.8	53,716.9	52,491.3	50,884.1	48,817.8
2 Operating Expenses	12,440.0	11,471.6	50,471.1	49,502.7	47,899.5	46,572.3	45,145.7
3 Operating Profit (Loss)	99.0	-42.6	4,355.7	4,214.2	4,591.9	4,311.8	3,672.2
4 Net Income (Loss)	-123.8	-194.1	2,690.9	2,620.7	2,863.7	2,667.9	1,922.3
TRAFFIC: (Billions)							
5 RPMs - Scheduled Rev. Svc.	54.0	49.0	234.9	229.9	223.9	214.7	204.7
6 ASMs - Scheduled Rev. Svc.	67.5	61.4	280.1	274.0	264.5	253.2	241.5
7 Overall RTMs (All Svc.)	6.3	5.6	26.8	26.2	25.4	24.5	23.5
8 Overall ATMs (All Svc.)	9.9	9.0	41.2	40.4	39.1	37.6	36.1
YIELD & UNIT COST & PROFITS: (Cents)							
9 Operating Revenue per RTM	200.6	202.7	204.7	205.3	206.4	207.8	208.0
10 Operating Expense per RTM	199.0	203.5	188.5	189.2	188.3	190.2	192.4
11 Operating Profit (Loss) per RTM	1.6	-0.8	16.3	16.1	18.1	17.6	15.6
12 Operating Expense per ATM	126.2	127.1	122.4	122.5	122.5	123.8	125.2
13 Passenger Revenue per RPM	17.92	17.70	18.29	18.25	18.21	18.16	17.92
FINANCIAL RATIOS:							
14 Operating Revenues to Total Investment	*	*	1.45	1.40	1.39	1.36	1.32
15 Times Interest Earned	*	*	4.93	4.58	4.69	4.02	2.98
16 Current Assets to Current Liabilities	*	*	0.75	0.83	0.89	0.91	0.91
17 No. of Days Cash Coverage of Cash Exp.	*	*	107.0	112.1	140.5	158.6	147.9
FINANCIAL PERCENTAGES: (%)							
18 Operating Profit (Loss) to Operating Revenue	0.8	-0.4	7.9	7.8	8.7	8.5	7.5
19 Net Income to Stockholders Equity	*	*	32.35	33.35	41.07	44.50	37.12
20 Corporate Return on Investment	*	*	9.4	9.3	10.2	10.2	8.6
21 Debt to Total Investment	*	*	74.8	75.9	77.2	80.0	82.3
PASSENGER LOAD FACTOR: (Sch. Svc. %)							
22 Actual	80.0	79.8	83.9	83.9	84.6	84.8	84.8
23 Breakeven	88.0	88.5	83.5	83.5	83.0	83.7	85.0
Employment & Productivity:							
24 Employment, Total Weighted Avg CY	95,146	85,960	92,678	90,381	87,672	84,628	81,634
25 Overall RTM's per Employee (000)	65.7	65.6	288.9	289.5	290.1	289.3	287.5
CHANGE OVER COMPARABLE PERIOD 12 MONTHS EARLIER							
26 Operating Revenues (%)	9.7	51.1	12.3	19.5	28.8	42.9	68.5
27 Operating Expenses (%)	8.4	28.3	11.8	16.2	19.2	27.2	40.2
28 Operating Profit (Loss) (in Millions \$)	141.6	1,332.7	683.6	1,874.6	4,037.4	5,311.6	6,898.8
29 Net Income (Loss) (in Millions \$)	70.2	1,183.1	768.6	1,881.5	3,614.0	3,887.0	3,905.2
30 RPMs (Sch. Svc.) (%)	10.1	42.1	14.7	20.9	27.1	37.0	56.4
31 ASMs (Sch. Svc.) (%)	9.9	28.0	16.0	20.2	22.0	26.0	35.9
32 Operating Revenues per RTM (%)	-1.1	13.8	-1.6	0.8	5.3	10.1	18.0
33 Operating Expense per RTM (%)	-2.2	-3.4	-2.0	-2.0	-2.6	-2.0	-1.9
34 Passenger Revenue per RPM (Sch. Svc.)(%)	1.3	24.7	2.1	5.5	11.9	19.7	30.5

QUARTERLY FINANCIAL & TRAFFIC REVIEW

SYSTEM OPERATIONS

System Cargo Majors

Items	Quarter Ended		12 Months Ended				
	2024 q1	2023 q1	2024 q1	2023 q4	2023 q3	2023 q2	2023 q1
FINANCIAL RESULTS: (\$Millions)							
1 Operating Revenues	13,686.1	14,301.6	55,749.2	56,364.6	57,192.7	58,731.0	61,122.6
2 Operating Expenses	13,236.8	13,887.4	54,331.9	54,982.5	55,731.0	57,008.1	59,034.3
3 Operating Profit (Loss)	449.3	414.1	1,417.2	1,382.1	1,461.7	1,723.0	2,088.3
4 Net Income (Loss)	391.2	451.9	1,179.5	1,240.3	1,283.1	1,527.7	1,750.8
TRAFFIC: (Billions)							
5 RTMs - Scheduled Svc.	5.2	5.3	21.9	22.1	22.5	23.0	23.8
6 ATMs - Scheduled Svc.	9.2	10.1	39.1	40.0	41.3	42.7	43.9
7 Overall RTMs (All Svc.)	8.6	8.8	37.5	37.7	37.9	38.1	38.9
8 Overall ATMs (All Svc.)	17.5	18.5	75.5	76.5	76.7	77.1	77.8
YIELD & UNIT COST & PROFITS: (Cents)							
9 Operating Revenue per RTM	159.8	162.7	148.8	149.6	151.0	154.2	157.2
10 Operating Expense per RTM	154.5	157.9	145.0	145.9	147.2	149.7	151.9
11 Operating Profit (Loss) per RTM	5.2	4.7	3.8	3.7	3.9	4.5	5.4
12 Operating Expense per ATM	75.7	75.2	72.0	71.9	72.7	73.9	75.9
13 Passenger Revenue per RPM	++	++	++	++	++	++	++
FINANCIAL RATIOS:							
14 Operating Revenues to Total Investment	*	*	1.17	1.18	1.21	1.24	1.42
15 Times Interest Earned	*	*	-12.76	-9.48	-9.25	-11.94	-11.50
16 Current Assets to Current Liabilities	*	*	0.92	1.08	1.13	3.02	1.38
17 No. of Days Cash Coverage of Cash Exp.	*	*	27.1	25.0	24.9	21.1	20.1
FINANCIAL PERCENTAGES: (%)							
18 Operating Profit (Loss) to Operating Revenue	3.3	2.9	2.5	2.5	2.6	2.9	3.4
19 Net Income to Stockholders Equity	*	*	3.44	3.66	3.84	4.62	5.35
20 Corporate Return on Investment	*	*	2.2	2.3	2.4	2.9	3.6
21 Debt to Total Investment	*	*	17.1	21.8	22.2	46.0	24.2
TON LOAD FACTOR: (%)							
22 Scheduled Svc.	56.5	53.1	56.0	55.1	54.4	54.0	54.3
23 All Services	49.0	47.6	49.6	49.3	49.4	49.4	50.0
Employment & Productivity:							
24 Employment, Total Weighted Avg CY	219,751	228,810	221,663	223,927	229,920	236,101	240,892
25 Overall RTM's per Employee (000)	39.0	38.4	169.0	168.3	164.7	161.3	161.4
CHANGE OVER COMPARABLE PERIOD 12 MONTHS EARLIER							
26 Operating Revenues (%)	-4.3	-6.8	-8.8	-9.3	-9.3	-5.9	0.6
27 Operating Expenses (%)	-4.7	-4.5	-8.0	-7.9	-6.4	-2.5	3.9
28 Operating Profit (Loss) (in Millions \$)	35.1	-393.0	-671.1	-1,099.2	-2,043.2	-2,192.9	-1,854.8
29 Net Income (Loss) (in Millions \$)	-60.7	-391.2	-571.3	-901.7	-1,619.6	-1,806.2	-1,793.0
30 RTMS (All Svc.) (%)	-2.6	-10.7	-3.6	-5.6	-6.1	-5.3	-2.7
31 ATMs (All Svc.) (%)	-5.3	-11.2	-3.0	-4.6	-5.5	-5.6	-2.3
32 Operating Revenues per RTM (%)	-1.8	4.3	-5.4	-4.0	-3.4	-0.6	3.4
33 Operating Expense per RTM (%)	-2.2	6.9	-4.5	-2.4	-0.3	2.9	6.8
34 Passenger Revenue per RPM (Sch. Svc.)(%)	++	++	++	++	++	++	++

QUARTERLY FINANCIAL & TRAFFIC REVIEW

DOMESTIC OPERATIONS

Domestic Cargo Majors

Items	Quarter Ended		12 Months Ended				
	2024 q1	2023 q1	2024 q1	2023 q4	2023 q3	2023 q2	2023 q1
FINANCIAL RESULTS: (\$Millions)							
1 Operating Revenues	7,917.1	8,364.7	32,191.9	32,639.6	33,282.7	34,184.9	35,516.3
2 Operating Expenses	6,595.8	7,392.6	27,383.7	28,180.4	28,832.9	29,695.5	30,501.5
3 Operating Profit (Loss)	1,321.3	972.1	4,808.2	4,459.1	4,449.7	4,489.4	5,014.8
4 Net Income (Loss)	1,053.5	644.6	4,046.4	3,637.5	3,505.9	3,386.1	3,654.4
TRAFFIC: (Billions)							
5 RTMs - Scheduled Svc.	2.4	2.5	10.2	10.2	10.4	10.8	11.2
6 ATMs - Scheduled Svc.	4.6	5.2	19.9	20.4	21.2	22.0	22.7
7 Overall RTMs (All Svc.)	3.4	3.3	14.2	14.1	14.2	14.5	15.1
8 Overall ATMs (All Svc.)	7.1	7.4	30.0	30.3	30.8	31.4	32.1
YIELD & UNIT COST & PROFITS: (Cents)							
9 Operating Revenue per RTM	234.0	254.8	226.4	231.2	233.9	235.2	235.4
10 Operating Expense per RTM	194.9	225.2	192.6	199.6	202.6	204.3	202.2
11 Operating Profit (Loss) per RTM	39.0	29.6	33.8	31.6	31.3	30.9	33.2
12 Operating Expense per ATM	92.3	99.4	91.3	93.0	93.8	94.7	94.9
13 Passenger Revenue per RPM	++	++	++	++	++	++	++
FINANCIAL RATIOS:							
14 Operating Revenues to Total Investment	*	*	**	**	**	**	**
15 Times Interest Earned	*	*	**	**	**	**	**
16 Current Assets to Current Liabilities	*	*	**	**	**	**	**
17 No. of Days Cash Coverage of Cash Exp.	*	*	**	**	**	**	**
FINANCIAL PERCENTAGES: (%)							
18 Operating Profit (Loss) to Operating Revenue	16.7	11.6	14.9	13.7	13.4	13.1	14.1
19 Net Income to Stockholders Equity	*	*	**	**	**	**	**
20 Corporate Return on Investment	*	*	**	**	**	**	**
21 Debt to Total Investment	*	*	**	**	**	**	**
TON LOAD FACTOR: (%)							
22 Scheduled Svc.	52.1	47.5	51.3	50.1	49.3	48.9	49.2
23 All Services	47.3	44.1	47.4	46.6	46.3	46.4	46.9
Employment & Productivity:							
24 Employment, Total Weighted Avg CY	*	*	**	**	**	**	**
25 Overall RTM's per Employee (000)	*	*	**	**	**	**	**
CHANGE OVER COMPARABLE PERIOD 12 MONTHS EARLIER							
26 Operating Revenues (%)	-5.4	-3.7	-9.4	-8.9	-7.6	-3.5	3.8
27 Operating Expenses (%)	-10.8	0.9	-10.2	-7.4	-4.9	0.8	7.1
28 Operating Profit (Loss) (in Millions \$)	349.1	-390.9	-206.6	-946.6	-1,268.9	-1,447.4	-739.0
29 Net Income (Loss) (in Millions \$)	408.9	-478.8	392.0	-495.7	-730.1	-1,054.4	-596.1
30 RTMS (All Svc.) (%)	3.1	-14.8	-5.7	-9.8	-11.1	-10.2	-7.2
31 ATMs (All Svc.) (%)	-3.9	-11.2	-6.7	-8.4	-9.1	-8.7	-5.2
32 Operating Revenues per RTM (%)	-8.2	13.0	-3.8	1.0	3.9	7.5	11.8
33 Operating Expense per RTM (%)	-13.5	18.5	-4.7	2.7	7.0	12.2	15.4
34 Passenger Revenue per RPM (Sch. Svc.)(%)	++	++	++	++	++	++	++

QUARTERLY FINANCIAL & TRAFFIC REVIEW

INTERNATIONAL OPERATIONS

International Cargo Majors

Items	Quarter Ended		12 Months Ended				
	2024 q1	2023 q1	2024 q1	2023 q4	2023 q3	2023 q2	2023 q1
FINANCIAL RESULTS: (\$Millions)							
1 Operating Revenues	5,769.0	5,936.8	23,557.3	23,725.1	23,910.0	24,546.2	25,606.3
2 Operating Expenses	6,641.0	6,494.8	26,948.3	26,802.1	26,898.1	27,312.6	28,532.8
3 Operating Profit (Loss)	-872.0	-558.0	-3,391.0	-3,077.0	-2,988.0	-2,766.4	-2,926.5
4 Net Income (Loss)	-662.3	-192.7	-2,866.8	-2,397.2	-2,222.7	-1,858.5	-1,903.5
TRAFFIC: (Billions)							
5 RTMs - Scheduled Svc.	2.8	2.9	11.7	11.8	12.0	12.3	12.6
6 ATMs - Scheduled Svc.	4.6	4.9	19.3	19.6	20.1	20.7	21.2
7 Overall RTMs (All Svc.)	5.2	5.5	23.2	23.6	23.6	23.6	23.8
8 Overall ATMs (All Svc.)	10.3	11.0	45.5	46.2	45.9	45.7	45.7
YIELD & UNIT COST & PROFITS: (Cents)							
9 Operating Revenue per RTM	111.3	107.7	101.4	100.7	101.1	104.2	107.7
10 Operating Expense per RTM	128.2	117.9	115.9	113.7	113.8	115.9	120.0
11 Operating Profit (Loss) per RTM	-16.8	-10.1	-14.6	-13.1	-12.6	-11.7	-12.3
12 Operating Expense per ATM	64.2	58.9	59.2	58.0	58.6	59.7	62.5
13 Passenger Revenue per RPM	++	++	++	++	++	++	++
FINANCIAL RATIOS:							
14 Operating Revenues to Total Investment	*	*	**	**	**	**	**
15 Times Interest Earned	*	*	**	**	**	**	**
16 Current Assets to Current Liabilities	*	*	**	**	**	**	**
17 No. of Days Cash Coverage of Cash Exp.	*	*	**	**	**	**	**
FINANCIAL PERCENTAGES: (%)							
18 Operating Profit (Loss) to Operating Revenue	-15.1	-9.4	-14.4	-13.0	-12.5	-11.3	-11.4
19 Net Income to Stockholders Equity	*	*	**	**	**	**	**
20 Corporate Return on Investment	*	*	**	**	**	**	**
21 Debt to Total Investment	*	*	**	**	**	**	**
TON LOAD FACTOR: (%)							
22 Scheduled Svc.	60.9	58.9	60.8	60.3	59.8	59.4	59.7
23 All Services	50.1	49.9	51.1	51.0	51.5	51.5	52.1
Employment & Productivity:							
24 Employment, Total Weighted Avg CY	*	*	**	**	**	**	**
25 Overall RTM's per Employee (000)	*	*	**	**	**	**	**
CHANGE OVER COMPARABLE PERIOD 12 MONTHS EARLIER							
26 Operating Revenues (%)	-2.8	-10.8	-8.0	-9.9	-11.5	-9.0	-3.4
27 Operating Expenses (%)	2.3	-10.0	-5.6	-8.4	-8.0	-5.8	0.8
28 Operating Profit (Loss) (in Millions \$)	-314.0	-2.1	-464.5	-152.6	-774.3	-745.6	-1,115.8
29 Net Income (Loss) (in Millions \$)	-469.6	87.6	-963.3	-406.0	-889.6	-751.9	-1,196.9
30 RTMS (All Svc.) (%)	-6.0	-8.0	-2.3	-2.8	-2.8	-1.9	0.4
31 ATMs (All Svc.) (%)	-6.3	-11.2	-0.4	-1.8	-3.0	-3.4	-0.1
32 Operating Revenues per RTM (%)	3.3	-3.1	-5.9	-7.2	-9.0	-7.2	-3.8
33 Operating Expense per RTM (%)	8.7	-2.1	-3.4	-5.7	-5.3	-4.0	0.4
34 Passenger Revenue per RPM (Sch. Svc.)(%)	++	++	++	++	++	++	++

QUARTERLY FINANCIAL & TRAFFIC REVIEW

SYSTEM OPERATIONS

Atlas Air Inc. (5Y)

Items	Quarter Ended		12 Months Ended				
	2024 q1	2023 q1	2024 q1	2023 q4	2023 q3	2023 q2	2023 q1
FINANCIAL RESULTS: (\$Millions)							
1 Operating Revenues	1,038.0	1,017.1	4,395.1	4,374.2	4,338.1	4,348.2	4,399.2
2 Operating Expenses	1,022.2	1,053.7	4,019.5	4,051.0	4,028.8	4,053.0	4,107.5
3 Operating Profit (Loss)	15.9	-36.6	375.6	323.2	309.3	295.2	291.7
4 Net Income (Loss)	1.4	-37.6	253.7	214.6	198.2	197.8	191.4
TRAFFIC: (Billions)							
5 RTMs - Scheduled Svc.							
6 ATMs - Scheduled Svc.							
7 Overall RTMs (All Svc.)	1.9	1.6	7.7	7.4	7.2	6.9	7.3
8 Overall ATMs (All Svc.)	4.7	4.4	18.0	17.7	17.1	17.0	16.8
YIELD & UNIT COST & PROFITS: (Cents)							
9 Operating Revenue per RTM	54.0	63.9	56.8	59.0	60.7	62.9	60.1
10 Operating Expense per RTM	53.1	66.2	51.9	54.7	56.3	58.6	56.1
11 Operating Profit (Loss) per RTM	0.8	-2.3	4.9	4.4	4.3	4.3	4.0
12 Operating Expense per ATM	21.8	24.0	22.3	22.9	23.6	23.8	24.5
13 Passenger Revenue per RPM	++	++	++	++	++	++	++
FINANCIAL RATIOS:							
14 Operating Revenues to Total Investment	*	*	1.01	1.05	1.10	1.14	1.17
15 Times Interest Earned	*	*	28.05	37.63	41.83	43.24	28.18
16 Current Assets to Current Liabilities	*	*	1.93	2.05	1.86	1.93	1.45
17 No. of Days Cash Coverage of Cash Exp.	*	*	9.4	13.2	14.1	15.0	9.3
FINANCIAL PERCENTAGES: (%)							
18 Operating Profit (Loss) to Operating Revenue	1.5	-3.6	8.5	7.4	7.1	6.8	6.6
19 Net Income to Stockholders Equity	*	*	7.91	7.06	6.89	7.09	7.03
20 Corporate Return on Investment	*	*	6.1	5.4	5.2	5.3	5.4
21 Debt to Total Investment	*	*	26.1	25.3	26.8	26.1	29.0
TON LOAD FACTOR: (%)							
22 Scheduled Svc.							
23 All Services	41.1	36.2	43.1	41.9	41.9	40.7	43.6
Employment & Productivity:							
24 Employment, Total Weighted Avg CY	4,560	4,563	4,538	4,539	4,537	4,494	4,402
25 Overall RTM's per Employee (000)	421.8	348.8	1,706.5	1,633.0	1,576.0	1,539.5	1,662.4
CHANGE OVER COMPARABLE PERIOD 12 MONTHS EARLIER							
26 Operating Revenues (%)	2.1	3.2	-0.1	0.1	1.6	6.7	15.6
27 Operating Expenses (%)	-3.0	18.4	-2.1	2.7	6.7	15.4	26.6
28 Operating Profit (Loss) (in Millions \$)	52.4	-132.3	84.0	-100.8	-186.7	-267.7	-268.6
29 Net Income (Loss) (in Millions \$)	39.0	-109.8	62.3	-86.5	-150.6	-195.1	-200.7
30 RTMS (All Svc.) (%)	20.9	-36.4	5.8	-9.9	-16.8	-20.3	-10.9
31 ATMs (All Svc.) (%)	6.6	-28.5	7.1	-4.6	-10.2	-13.9	-12.0
32 Operating Revenues per RTM (%)	-15.6	62.1	-5.6	11.2	22.1	33.9	29.7
33 Operating Expense per RTM (%)	-19.7	86.0	-7.5	14.0	28.3	44.8	42.0
34 Passenger Revenue per RPM (Sch. Svc.)(%)	++	++	++	++	++	++	++

QUARTERLY FINANCIAL & TRAFFIC REVIEW

SYSTEM OPERATIONS

Federal Express Corporation (FX)

Items	Quarter Ended		12 Months Ended				
	2024 q1	2023 q1	2024 q1	2023 q4	2023 q3	2023 q2	2023 q1
FINANCIAL RESULTS: (\$Millions)							
1 Operating Revenues	9,978.5	10,296.8	40,160.0	40,478.3	40,973.5	41,827.9	43,351.7
2 Operating Expenses	9,613.8	9,895.1	39,386.4	39,667.8	40,042.0	40,768.3	41,945.0
3 Operating Profit (Loss)	364.7	401.7	773.6	810.5	931.5	1,059.6	1,406.7
4 Net Income (Loss)	336.2	438.0	703.2	805.0	906.1	1,047.1	1,271.4
TRAFFIC: (Billions)							
5 RTMs - Scheduled Svc.	3.0	3.0	12.3	12.3	12.4	12.6	13.1
6 ATMs - Scheduled Svc.	5.7	5.8	23.8	23.9	24.1	24.5	25.2
7 Overall RTMs (All Svc.)	3.0	3.0	12.4	12.4	12.5	12.6	13.1
8 Overall ATMs (All Svc.)	5.8	5.8	24.1	24.1	24.3	24.6	25.3
YIELD & UNIT COST & PROFITS: (Cents)							
9 Operating Revenue per RTM	331.4	347.5	323.3	327.2	329.0	330.7	330.9
10 Operating Expense per RTM	319.3	334.0	317.1	320.6	321.5	322.3	320.2
11 Operating Profit (Loss) per RTM	12.1	13.6	6.2	6.6	7.5	8.4	10.7
12 Operating Expense per ATM	165.3	170.7	163.4	164.7	165.1	165.9	165.7
13 Passenger Revenue per RPM	++	++	++	++	++	++	++
FINANCIAL RATIOS:							
14 Operating Revenues to Total Investment	*	*	1.43	1.44	1.48	1.52	1.60
15 Times Interest Earned	*	*	-14.19	-9.65	-8.86	-10.18	-9.02
16 Current Assets to Current Liabilities	*	*	0.72	0.73	0.77	0.79	0.92
17 No. of Days Cash Coverage of Cash Exp.	*	*	30.7	28.1	27.9	23.0	23.0
FINANCIAL PERCENTAGES: (%)							
18 Operating Profit (Loss) to Operating Revenue	3.7	3.9	1.9	2.0	2.3	2.5	3.2
19 Net Income to Stockholders Equity	*	*	2.68	3.08	3.50	4.08	4.99
20 Corporate Return on Investment	*	*	2.3	2.5	2.8	3.4	4.0
21 Debt to Total Investment	*	*	5.3	7.1	7.3	6.9	6.1
TON LOAD FACTOR: (%)							
22 Scheduled Svc.	51.8	51.3	51.6	51.5	51.4	51.6	51.9
23 All Services	51.8	51.1	51.5	51.4	51.3	51.5	51.8
Employment & Productivity:							
24 Employment, Total Weighted Avg CY	205,231	214,019	207,039	209,236	215,168	221,423	226,417
25 Overall RTM's per Employee (000)	14.7	13.8	60.0	59.1	57.9	57.1	57.9
CHANGE OVER COMPARABLE PERIOD 12 MONTHS EARLIER							
26 Operating Revenues (%)	-3.1	-7.6	-7.4	-8.4	-9.5	-7.9	-3.3
27 Operating Expenses (%)	-2.8	-6.6	-6.1	-7.0	-6.8	-4.4	-0.2
28 Operating Profit (Loss) (in Millions \$)	-37.0	-148.3	-633.1	-744.4	-1,396.1	-1,697.5	-1,399.3
29 Net Income (Loss) (in Millions \$)	-101.8	-210.6	-568.2	-677.0	-1,118.2	-1,444.9	-1,454.1
30 RTMS (All Svc.) (%)	1.6	-10.5	-5.2	-8.0	-9.8	-9.9	-7.8
31 ATMs (All Svc.) (%)	0.4	-6.8	-4.8	-6.4	-7.0	-6.1	-3.0
32 Operating Revenues per RTM (%)	-4.6	3.3	-2.3	-0.4	0.3	2.3	4.9
33 Operating Expense per RTM (%)	-4.4	4.4	-1.0	1.1	3.3	6.1	8.3
34 Passenger Revenue per RPM (Sch. Svc.)(%)	++	++	++	++	++	++	++

QUARTERLY FINANCIAL & TRAFFIC REVIEW

SYSTEM OPERATIONS

Kalitta Air LLC (KAQ)^

Items	Quarter Ended		12 Months Ended				
	2024 q1	2023 q1	2024 q1	2023 q4	2023 q3	2023 q2	2023 q1
FINANCIAL RESULTS: (\$Millions)							
1 Operating Revenues	426.6	389.2	1,818.7	1,781.3	1,815.5	1,972.4	2,154.1
2 Operating Expenses	432.1	421.6	1,823.6	1,813.2	1,841.4	1,896.2	2,038.1
3 Operating Profit (Loss)	-5.5	-32.4	-5.0	-31.9	-26.0	76.2	116.1
4 Net Income (Loss)	-0.1	-25.6	14.8	-10.7	-9.6	87.5	116.4
TRAFFIC: (Billions)							
5 RTMs - Scheduled Svc.							
6 ATMs - Scheduled Svc.							
7 Overall RTMs (All Svc.)	0.8	0.8	3.7	3.7	3.7	3.6	3.6
8 Overall ATMs (All Svc.)	2.6	2.4	12.1	11.9	11.4	10.6	10.8
YIELD & UNIT COST & PROFITS: (Cents)							
9 Operating Revenue per RTM	54.6	50.2	49.1	48.2	49.6	55.0	59.1
10 Operating Expense per RTM	55.3	54.3	49.2	49.0	50.3	52.9	55.9
11 Operating Profit (Loss) per RTM	-0.7	-4.2	-0.1	-0.9	-0.7	2.1	3.2
12 Operating Expense per ATM	16.8	17.5	15.1	15.2	16.1	17.9	18.8
13 Passenger Revenue per RPM	++	++	++	++	++	++	++
FINANCIAL RATIOS:							
14 Operating Revenues to Total Investment	*	*	1.59	1.55	1.58	1.73	1.89
15 Times Interest Earned	*	*	0.26	1.48	1.55	-5.88	-18.35
16 Current Assets to Current Liabilities	*	*	3.73	3.94	3.39	3.46	3.44
17 No. of Days Cash Coverage of Cash Exp.	*	*	97.5	90.4	89.8	84.5	73.8
FINANCIAL PERCENTAGES: (%)							
18 Operating Profit (Loss) to Operating Revenue	-1.3	-8.3	-0.3	-1.8	-1.4	3.9	5.4
19 Net Income to Stockholders Equity	*	*	1.32	-0.95	-0.85	7.86	10.62
20 Corporate Return on Investment	*	*	-0.6	-2.7	-2.3	6.5	9.7
21 Debt to Total Investment	*	*	0.9	1.0	1.4	1.7	2.0
TON LOAD FACTOR: (%)							
22 Scheduled Svc.							
23 All Services	30.4	32.2	30.7	31.0	32.0	33.9	33.6
Employment & Productivity:							
24 Employment, Total Weighted Avg CY	2,909	2,680	2,817	2,759	2,707	2,652	2,576
25 Overall RTM's per Employee (000)	268.7	289.6	1,315.2	1,340.8	1,351.3	1,352.7	1,414.6
CHANGE OVER COMPARABLE PERIOD 12 MONTHS EARLIER							
26 Operating Revenues (%)	9.6	-27.8	-15.6	-22.7	-23.5	-13.0	1.9
27 Operating Expenses (%)	2.5	-10.4	-10.5	-13.1	-9.5	-5.5	10.3
28 Operating Profit (Loss) (in Millions \$)	26.9	-100.7	-121.0	-248.6	-365.2	-184.4	-150.7
29 Net Income (Loss) (in Millions \$)	25.5	-89.4	-101.6	-216.5	-332.0	-153.1	-132.6
30 RTMS (All Svc.) (%)	0.7	-24.8	1.7	-5.2	-11.6	-18.1	-19.7
31 ATMs (All Svc.) (%)	7.0	-26.3	11.5	1.8	-9.3	-21.1	-12.2
32 Operating Revenues per RTM (%)	8.8	-3.9	-17.0	-18.5	-13.5	6.2	26.9
33 Operating Expense per RTM (%)	1.7	19.2	-12.0	-8.4	2.4	15.3	37.4
34 Passenger Revenue per RPM (Sch. Svc.)(%)	++	++	++	++	++	++	++

QUARTERLY FINANCIAL & TRAFFIC REVIEW

SYSTEM OPERATIONS

Polar Air Cargo Airways (PO)

Items	Quarter Ended		12 Months Ended				
	2024 q1	2023 q1	2024 q1	2023 q4	2023 q3	2023 q2	2023 q1
FINANCIAL RESULTS: (\$Millions)							
1 Operating Revenues	201.5	308.1	1,103.2	1,209.8	1,332.0	1,484.1	1,690.5
2 Operating Expenses	201.8	309.4	1,105.2	1,212.8	1,333.8	1,486.8	1,693.4
3 Operating Profit (Loss)	-0.4	-1.3	-2.0	-3.0	-1.8	-2.6	-2.9
4 Net Income (Loss)	0.0	0.0	0.0	0.0		0.0	0.0
TRAFFIC: (Billions)							
5 RTMs - Scheduled Svc.							
6 ATMs - Scheduled Svc.							
7 Overall RTMs (All Svc.)	0.6	1.1	3.9	4.4	4.5	4.5	4.0
8 Overall ATMs (All Svc.)	0.9	1.5	5.9	6.5	6.6	6.6	6.0
YIELD & UNIT COST & PROFITS: (Cents)							
9 Operating Revenue per RTM	33.5	28.9	27.9	27.4	29.4	33.0	41.9
10 Operating Expense per RTM	33.6	29.0	28.0	27.5	29.5	33.1	42.0
11 Operating Profit (Loss) per RTM	-0.1	-0.1	-0.1	-0.1	0.0	-0.1	-0.1
12 Operating Expense per ATM	22.7	20.0	18.9	18.6	20.1	22.5	28.1
13 Passenger Revenue per RPM	++	++	++	++	++	++	++
FINANCIAL RATIOS:							
14 Operating Revenues to Total Investment	*	*	71.36	78.25	86.15	96.00	109.34
15 Times Interest Earned	*	*	1.00	1.00	1.00	1.00	1.00
16 Current Assets to Current Liabilities	*	*	0.76	0.81	0.75	0.76	0.71
17 No. of Days Cash Coverage of Cash Exp.	*	*	13.6	20.6	18.6	19.3	9.0
FINANCIAL PERCENTAGES: (%)							
18 Operating Profit (Loss) to Operating Revenue	-0.2	-0.4	-0.2	-0.2	-0.1	-0.2	-0.2
19 Net Income to Stockholders Equity	*	*	0.00	0.00		0.00	0.00
20 Corporate Return on Investment	*	*	-23.7	-23.8	-24.1	-20.3	-13.8
21 Debt to Total Investment	*	*					
TON LOAD FACTOR: (%)							
22 Scheduled Svc.							
23 All Services	67.6	69.1	67.5	67.9	68.2	67.9	66.8
Employment & Productivity:							
24 Employment, Total Weighted Avg CY	210	281	256	274	281	282	278
25 Overall RTM's per Employee (000)	2,859.6	3,797.3	15,424.2	16,113.6	16,105.0	15,926.1	14,502.7
CHANGE OVER COMPARABLE PERIOD 12 MONTHS EARLIER							
26 Operating Revenues (%)	-34.6	-34.2	-34.7	-34.6	-30.4	-21.9	-9.5
27 Operating Expenses (%)	-34.8	-33.9	-34.7	-34.5	-30.4	-21.7	-9.1
28 Operating Profit (Loss) (in Millions \$)	1.0	-1.7	0.9	-1.8	0.1	-2.9	-6.4
29 Net Income (Loss) (in Millions \$)	0.0	0.0	0.0	0.0		0.0	
30 RTMS (All Svc.) (%)	-43.7	135.7	-2.1	29.2	59.6	96.9	80.9
31 ATMs (All Svc.) (%)	-42.5	113.5	-3.0	24.9	48.9	82.3	68.2
32 Operating Revenues per RTM (%)	16.2	-72.1	-33.4	-49.4	-56.4	-60.3	-49.9
33 Operating Expense per RTM (%)	15.9	-72.0	-33.4	-49.3	-56.4	-60.3	-49.8
34 Passenger Revenue per RPM (Sch. Svc.)(%)	++	++	++	++	++	++	++

QUARTERLY FINANCIAL & TRAFFIC REVIEW

SYSTEM OPERATIONS

United Parcel Service (5X)

Items	Quarter Ended		12 Months Ended				
	2024 q1	2023 q1	2024 q1	2023 q4	2023 q3	2023 q2	2023 q1
FINANCIAL RESULTS: (\$Millions)							
1 Operating Revenues	2,023.8	2,255.1	8,169.4	8,400.7	8,575.9	8,927.1	9,338.2
2 Operating Expenses	1,944.4	2,179.7	7,899.3	8,134.6	8,375.2	8,686.5	9,128.2
3 Operating Profit (Loss)	79.5	75.4	270.1	266.0	200.7	240.6	210.0
4 Net Income (Loss)	60.8	70.9	207.0	217.1	143.3	144.2	107.6
TRAFFIC: (Billions)							
5 RTMs - Scheduled Svc.	2.2	2.4	9.6	9.8	10.1	10.4	10.8
6 ATMs - Scheduled Svc.	3.5	4.3	15.3	16.1	17.2	18.2	18.7
7 Overall RTMs (All Svc.)	2.2	2.4	9.6	9.8	10.1	10.4	10.8
8 Overall ATMs (All Svc.)	3.5	4.3	15.4	16.2	17.2	18.3	18.8
YIELD & UNIT COST & PROFITS: (Cents)							
9 Operating Revenue per RTM	90.1	94.2	84.8	85.9	85.1	85.5	86.7
10 Operating Expense per RTM	86.5	91.1	82.0	83.2	83.1	83.2	84.8
11 Operating Profit (Loss) per RTM	3.5	3.2	2.8	2.7	2.0	2.3	1.9
12 Operating Expense per ATM	55.4	50.5	51.3	50.2	48.6	47.6	48.6
13 Passenger Revenue per RPM	++	++	++	++	++	++	++
FINANCIAL RATIOS:							
14 Operating Revenues to Total Investment	*	*	0.62	0.61	0.62	0.63	0.89
15 Times Interest Earned	*	*	-4.19	-4.28	-3.49	-6.31	-7.80
16 Current Assets to Current Liabilities	*	*	1.55	3.74	3.48	23.75	4.60
17 No. of Days Cash Coverage of Cash Exp.	*	*	3.6	1.5	1.5	1.4	1.4
FINANCIAL PERCENTAGES: (%)							
18 Operating Profit (Loss) to Operating Revenue	3.9	3.3	3.3	3.2	2.3	2.7	2.2
19 Net Income to Stockholders Equity	*	*	5.41	5.76	3.84	3.90	2.94
20 Corporate Return on Investment	*	*	1.3	1.3	0.8	0.9	0.9
21 Debt to Total Investment	*	*	47.0	59.0	59.5	86.9	65.3
TON LOAD FACTOR: (%)							
22 Scheduled Svc.	64.1	55.5	62.7	60.5	58.6	57.3	57.5
23 All Services	64.0	55.4	62.5	60.3	58.5	57.2	57.4
Employment & Productivity:							
24 Employment, Total Weighted Avg CY	6,633	7,043	6,813	6,915	7,000	7,019	6,988
25 Overall RTM's per Employee (000)	338.7	339.8	1,414.2	1,414.6	1,439.3	1,487.4	1,541.0
CHANGE OVER COMPARABLE PERIOD 12 MONTHS EARLIER							
26 Operating Revenues (%)	-10.3	3.9	-12.5	-9.2	-5.1	3.7	16.4
27 Operating Expenses (%)	-10.8	4.1	-13.5	-10.0	-4.2	4.5	18.0
28 Operating Profit (Loss) (in Millions \$)	4.1	-1.4	60.1	54.7	-90.5	-50.3	-77.0
29 Net Income (Loss) (in Millions \$)	-10.1	27.7	99.4	137.1	-13.5	-22.3	-52.2
30 RTMS (All Svc.) (%)	-6.1	-5.8	-10.5	-10.4	-8.0	-3.6	0.1
31 ATMs (All Svc.) (%)	-18.7	-2.5	-17.9	-14.1	-9.1	-2.3	1.6
32 Operating Revenues per RTM (%)	-4.4	10.4	-2.2	1.3	3.1	7.6	16.4
33 Operating Expense per RTM (%)	-5.0	10.6	-3.3	0.4	4.1	8.3	18.0
34 Passenger Revenue per RPM (Sch. Svc.)(%)	++	++	++	++	++	++	++

QUARTERLY FINANCIAL & TRAFFIC REVIEW

SYSTEM OPERATIONS

USA Jet Airlines Inc. (U7)^

Items	Quarter Ended		12 Months Ended				
	2024 q1	2023 q1	2024 q1	2023 q4	2023 q3	2023 q2	2023 q1
FINANCIAL RESULTS: (\$Millions)							
1 Operating Revenues	17.7	35.2	102.8	120.3	157.8	171.3	189.0
2 Operating Expenses	22.7	27.9	97.9	103.1	109.7	117.3	122.2
3 Operating Profit (Loss)	-5.0	7.3	4.9	17.2	48.1	54.0	66.8
4 Net Income (Loss)	-7.1	6.3	0.8	14.2	45.2	51.1	64.1
TRAFFIC: (Billions)							
5 RTMs - Scheduled Svc.							
6 ATMs - Scheduled Svc.							
7 Overall RTMs (All Svc.)	0.0	0.0	0.0	0.0	0.0	0.0	0.0
8 Overall ATMs (All Svc.)	0.0	0.0	0.1	0.1	0.1	0.1	0.1
YIELD & UNIT COST & PROFITS: (Cents)							
9 Operating Revenue per RTM	1,133.7	2,203.4	1,191.9	1,389.0	1,916.1	2,429.5	2,786.4
10 Operating Expense per RTM	1,452.9	1,747.3	1,134.9	1,190.6	1,332.3	1,663.7	1,801.2
11 Operating Profit (Loss) per RTM	-319.2	456.1	57.0	198.4	583.7	765.8	985.2
12 Operating Expense per ATM	187.8	203.1	173.9	177.9	187.7	198.2	212.3
13 Passenger Revenue per RPM	++	++	++	++	++	++	++
FINANCIAL RATIOS:							
14 Operating Revenues to Total Investment	*	*	0.15	0.18	0.25	0.29	0.35
15 Times Interest Earned	*	*	1.20	5.76	15.89	17.92	22.06
16 Current Assets to Current Liabilities	*	*	0.48	0.25	0.77	0.37	0.29
17 No. of Days Cash Coverage of Cash Exp.	*	*	0.0	0.0	0.0	0.0	0.0
FINANCIAL PERCENTAGES: (%)							
18 Operating Profit (Loss) to Operating Revenue	-28.2	20.7	4.8	14.3	30.5	31.5	35.4
19 Net Income to Stockholders Equity	*	*	-0.43	-7.46	-22.64	-24.42	-28.73
20 Corporate Return on Investment	*	*	0.7	2.5	7.6	9.1	12.3
21 Debt to Total Investment	*	*	125.7	125.4	126.4	127.5	129.6
TON LOAD FACTOR: (%)							
22 Scheduled Svc.							
23 All Services	12.9	11.6	15.3	14.9	14.1	11.9	11.8
Employment & Productivity:							
24 Employment, Total Weighted Avg CY	207	223	197	201	225	228	229
25 Overall RTM's per Employee (000)	7.5	7.2	43.8	43.1	36.6	30.9	29.6
CHANGE OVER COMPARABLE PERIOD 12 MONTHS EARLIER							
26 Operating Revenues (%)	-49.8	-18.5	-45.6	-38.9	-5.4	17.0	71.9
27 Operating Expenses (%)	-18.9	2.3	-19.9	-15.1	-3.8	14.6	35.2
28 Operating Profit (Loss) (in Millions \$)	-12.3	-8.6	-61.9	-58.3	-4.8	9.9	47.2
29 Net Income (Loss) (in Millions \$)	-13.4	-9.1	-63.2	-58.9	-5.4	9.2	46.6
30 RTMs (All Svc.) (%)	-2.4	-15.2	27.1	22.6	19.3	0.9	17.0
31 ATMs (All Svc.) (%)	-12.2	-8.5	-2.2	-1.4	-0.9	10.1	31.6
32 Operating Revenues per RTM (%)	-48.5	-3.9	-57.2	-50.2	-20.7	15.9	46.9
33 Operating Expense per RTM (%)	-16.9	20.6	-37.0	-30.7	-19.4	13.6	15.5
34 Passenger Revenue per RPM (Sch. Svc.)(%)	++	++	++	++	++	++	++

Comparison of Operating Profit (Loss)

For Individual System Majors

2023 q1 Compared To 2024 q1

Operating Profit (Loss) (\$Billions)						
	Quarterly Data			12 Months Ended Data		
	2023 q1	2024 q1	\$ Chg	YE 2023 q1	YE 2024 q1	\$ Chg
System Passenger Majors	197.1	-225.5	-422.6	13,690.3	13,345.7	-344.6
Alaska Airlines Inc. (AS)	-143.9	-178.2	-34.3	276.0	395.8	119.8
Allegiant Air (G4)	98.1	24.6	-73.5	226.8	179.7	-47.1
American Airlines Inc. (AA)	439.2	12.7	-426.5	3,788.0	2,642.0	-1,146.0
Delta Air Lines Inc. (DL)	589.3	637.6	48.3	5,352.2	6,424.9	1,072.7
Envoy Air (MQ)	0.5	-14.9	-15.5	22.8	-5.3	-28.1
Frontier Airlines Inc. (F9)	-25.0	-30.3	-5.3	74.3	-7.4	-81.8
Hawaiian Airlines Inc. (HA)	-127.3	-146.6	-19.3	-169.2	-315.7	-146.5
JetBlue Airways (B6)	-226.7	-124.2	102.5	-93.5	-23.2	70.2
Republic Airline (YX)	37.2	35.0	-2.2	143.1	135.5	-7.6
SkyWest Airlines Inc. (OO)	-60.9	4.7	65.6	-75.7	-87.7	-12.0
Southwest Airlines Co. (WN)	-284.2	-392.7	-108.5	883.5	115.3	-768.2
Spirit Air Lines (NK)	-112.4	-207.3	-94.9	-499.8	-590.7	-90.9
Sun Country Airlines d/b/a MN Airlines (SY)^	55.8	55.2	-0.6	89.7	126.9	37.2
United Air Lines Inc. (UA)	-42.6	99.0	141.6	3,672.2	4,355.7	683.6
System Cargo Majors	414.1	449.3	35.1	2,088.3	1,417.2	-671.1
Atlas Air Inc. (5Y)	-36.6	15.9	52.4	291.7	375.6	84.0
Federal Express Corporation (FX)	401.7	364.7	-37.0	1,406.7	773.6	-633.1
Kalitta Air LLC (KAQ)^	-32.4	-5.5	26.9	116.1	-5.0	-121.0
Polar Air Cargo Airways (PO)	-1.3	-0.4	1.0	-2.9	-2.0	0.9
United Parcel Service (5X)	75.4	79.5	4.1	210.0	270.1	60.1
USA Jet Airlines Inc. (U7)^	7.3	-5.0	-12.3	66.8	4.9	-61.9
System All Majors	611.2	223.8	-387.4	15,778.6	14,762.9	-1,015.7

Comparison of Net Income (Loss)

For Individual System Majors

2023 q1 Compared To 2024 q1

	Net Income (Loss) (\$Millions)					
	Quarterly Data			12 Months Ended Data		
	2023 q1	2024 q1	\$ Chg	YE 2023 q1	YE 2024 q1	\$ Chg
System Passenger Majors	-1,025.0	-1,562.8	-537.8	6,239.3	8,081.4	1,842.2
Alaska Airlines Inc. (AS)	-138.2	-142.0	-3.8	121.4	248.7	127.3
Allegiant Air (G4)	61.4	13.5	-47.9	129.6	102.0	-27.6
American Airlines Inc. (AA)	84.6	-216.6	-301.1	2,000.5	886.8	-1,113.7
Delta Air Lines Inc. (DL)	-272.8	113.9	386.7	2,213.0	5,335.7	3,122.7
Envoy Air (MQ)	1.4	-12.5	-13.9	17.6	-10.1	-27.7
Frontier Airlines Inc. (F9)	-13.0	-25.4	-12.4	64.1	-20.5	-84.6
Hawaiian Airlines Inc. (HA)	-107.2	-135.4	-28.2	-197.4	-291.2	-93.8
JetBlue Airways (B6)	-191.5	-715.9	-524.3	-299.0	-834.6	-535.7
Republic Airline (YX)	20.6	16.4	-4.2	79.6	46.8	-32.8
SkyWest Airlines Inc. (OO)	-51.5	3.1	54.6	-58.7	-49.9	8.8
Southwest Airlines Co. (WN)	-159.5	-230.7	-71.2	657.5	393.5	-264.0
Spirit Air Lines (NK)	-103.9	-142.6	-38.7	-463.4	-486.2	-22.8
Sun Country Airlines d/b/a MN Airlines (SY)^	38.7	35.2	-3.5	51.9	69.4	17.4
United Air Lines Inc. (UA)	-194.1	-123.8	70.2	1,922.3	2,690.9	768.6
System Cargo Majors	451.9	391.2	-60.7	1,750.8	1,179.5	-571.3
Atlas Air Inc. (5Y)	-37.6	1.4	39.0	191.4	253.7	62.3
Federal Express Corporation (FX)	438.0	336.2	-101.8	1,271.4	703.2	-568.2
Kalitta Air LLC (KAQ)^	-25.6	-0.1	25.5	116.4	14.8	-101.6
Polar Air Cargo Airways (PO)	0.0	0.0	0.0	0.0	0.0	0.0
United Parcel Service (5X)	70.9	60.8	-10.1	107.6	207.0	99.4
USA Jet Airlines Inc. (U7)^	6.3	-7.1	-13.4	64.1	0.8	-63.2
System All Majors	-573.1	-1,171.7	-598.6	7,990.1	9,261.0	1,270.9

Comparison of Passenger Load Factors

For Individual System Passenger Majors

2023 q1 Compared To 2024 q1

Passenger Load Factor (Percent)						
	Quarterly Data			12 Months Ended Data		
	2023 q1	2024 q1	Pt Chg	YE 2023 q1	YE 2024 q1	Pt Chg
System Passenger Majors	80.2	80.7	0.5	84.3	83.5	-0.8
Alaska Airlines Inc. (AS)	79.8	81.4	1.7	85.2	84.1	-1.1
Allegiant Air (G4)	86.4	84.3	-2.0	87.3	86.0	-1.3
American Airlines Inc. (AA)	80.8	81.9	1.1	84.5	84.2	-0.4
Delta Air Lines Inc. (DL)	81.6	83.1	1.6	85.5	86.0	0.5
Envoy Air (MQ)	77.0	80.7	3.7	82.3	82.4	0.0
Frontier Airlines Inc. (F9)	82.8	72.7	-10.0	82.9	79.0	-3.9
Hawaiian Airlines Inc. (HA)	78.2	80.7	2.4	81.8	84.1	2.2
JetBlue Airways (B6)	79.8	79.7	-0.1	83.5	82.8	-0.7
Republic Airline (YX)	67.7	73.3	5.5	73.7	78.5	4.7
SkyWest Airlines Inc. (OO)	78.2	78.9	0.7	83.0	82.0	-1.0
Southwest Airlines Co. (WN)	77.6	78.3	0.7	83.4	80.1	-3.3
Spirit Air Lines (NK)	80.8	80.7	-0.1	82.7	81.3	-1.4
Sun Country Airlines d/b/a MN Airlines (SY)^	88.1	87.4	-0.7	86.1	86.2	0.1
United Air Lines Inc. (UA)	79.8	80.0	0.1	84.8	83.9	-0.9

Comparison of Passenger Yields (Cents)

For Individual System Passenger Majors

2023 q1 Compared To 2024 q1

	Passenger Yields (Cents)					
	Quarterly Data			12 Months Ended Data		
	2023 q1	2024 q1	% Chg	YE 2023 q1	YE 2024 q1	% Chg
System Passenger Majors	16.5	16.2	-1.4%	16.8	16.5	-1.8%
Alaska Airlines Inc. (AS)	13.5	13.4	-0.6%	15.0	14.3	-4.6%
Allegiant Air (G4)	12.3	11.6	-5.3%	11.4	11.4	-0.5%
American Airlines Inc. (AA)	19.2	17.7	-7.8%	19.2	18.4	-3.9%
Delta Air Lines Inc. (DL)	17.9	18.0	0.4%	18.5	18.2	-1.6%
Envoy Air (MQ)	25.7	22.3	-13.0%	23.2	21.9	-5.7%
Frontier Airlines Inc. (F9)	7.1	7.7	8.6%	7.9	7.2	-8.8%
Hawaiian Airlines Inc. (HA)	13.6	13.7	0.9%	14.9	14.0	-6.2%
JetBlue Airways (B6)	15.0	14.5	-3.1%	15.3	14.5	-5.4%
Republic Airline (YX)	18.6	16.8	-9.4%	15.4	15.9	3.6%
SkyWest Airlines Inc. (OO)	12.3	13.2	6.8%	11.3	12.2	7.7%
Southwest Airlines Co. (WN)	16.5	16.4	-0.2%	16.9	16.6	-2.0%
Spirit Air Lines (NK)	6.5	5.6	-13.8%	7.2	5.7	-20.2%
Sun Country Airlines d/b/a MN Airlines (SY)^	12.0	9.8	-18.2%	11.0	9.4	-14.4%
United Air Lines Inc. (UA)	17.7	17.9	1.3%	17.9	18.3	2.1%

Comparison of Operating Profit Margin (Percent)

For Individual System Majors

2023 q1 Compared To 2024 q1

Operating Profit Margin (Percent)						
	Quarterly Data			12 Months Ended Data		
	2023 q1	2024 q1	Pt Chg	YE 2023 q1	YE 2024 q1	Pt Chg
System Passenger Majors	0.4	-0.4	-0.8	6.2	5.7	-0.5
Alaska Airlines Inc. (AS)	-6.6	-8.0	-1.4	2.7	3.8	1.1
Allegiant Air (G4)	15.1	3.9	-11.2	9.3	7.2	-2.0
American Airlines Inc. (AA)	3.6	0.1	-3.5	7.2	5.0	-2.3
Delta Air Lines Inc. (DL)	4.6	4.6	0.0	9.9	10.8	1.0
Envoy Air (MQ)	0.1	-3.1	-3.2	1.3	-0.3	-1.6
Frontier Airlines Inc. (F9)	-2.9	-3.5	-0.6	2.1	-0.2	-2.3
Hawaiian Airlines Inc. (HA)	-20.8	-22.7	-1.9	-6.1	-11.5	-5.4
JetBlue Airways (B6)	-9.7	-5.6	4.1	-1.0	-0.2	0.7
Republic Airline (YX)	10.2	10.2	0.0	10.5	9.7	-0.8
SkyWest Airlines Inc. (OO)	-10.7	0.7	11.5	-3.1	-3.6	-0.5
Southwest Airlines Co. (WN)	-5.0	-6.2	-1.2	3.6	0.4	-3.1
Spirit Air Lines (NK)	-8.3	-16.4	-8.1	-9.2	-11.2	-2.0
Sun Country Airlines d/b/a MN Airlines (SY)^	19.0	17.7	-1.3	9.3	11.9	2.6
United Air Lines Inc. (UA)	-0.4	0.8	1.2	7.5	7.9	0.4
System Cargo Majors	2.9	3.3	0.4	3.4	2.5	-0.9
Atlas Air Inc. (5Y)	-3.6	1.5	5.1	6.6	8.5	1.9
Federal Express Corporation (FX)	3.9	3.7	-0.2	3.2	1.9	-1.3
Kalitta Air LLC (KAQ)^	-8.3	-1.3	7.0	5.4	-0.3	-5.7
Polar Air Cargo Airways (PO)	-0.4	-0.2	0.3	-0.2	-0.2	0.0
United Parcel Service (5X)	3.3	3.9	0.6	2.2	3.3	1.1
USA Jet Airlines Inc. (U7)^	20.7	-28.2	-48.9	35.4	4.8	-30.6
System All Majors	0.9	0.3	-0.6	5.6	5.1	-0.5

Comparison of Debt-to-Investment and Total Debt

For Individual System Majors

2023 q1 Compared To 2024 q1

	Debt To Investment (Percent)			Total Debt (\$Millions)		
	Quarterly Data			Quarterly Data		
	2023 q1	2024 q1	Pt Chg	2023 q1	2024 q1	\$ Chg
System Passenger Majors	69.9	65.8	-4.1	111,494.7	105,217.3	-6,277.5
Alaska Airlines Inc. (AS)	18.1	18.8	0.7	1,781.0	1,951.0	170.0
Allegiant Air (G4)	52.0	53.6	1.5	1,756.1	1,897.6	141.6
American Airlines Inc. (AA)	84.0	80.9	-3.0	29,923.8	27,104.1	-2,819.7
Delta Air Lines Inc. (DL)	77.6	63.3	-14.3	21,956.8	19,361.6	-2,595.2
Frontier Airlines Inc. (F9)	47.1	49.6	2.5	426.1	465.3	39.2
Hawaiian Airlines Inc. (HA)	66.4	78.0	11.6	1,264.1	1,333.1	69.0
JetBlue Airways (B6)	51.5	65.6	14.1	3,578.5	5,012.1	1,433.6
Republic Airline (YX)	47.3	48.6	1.3	921.2	1,016.0	94.8
SkyWest Airlines Inc. (OO)	71.1	73.7	2.6	4,005.5	3,884.3	-121.2
Southwest Airlines Co. (WN)	43.8	44.0	0.2	8,031.4	8,001.9	-29.5
Spirit Air Lines (NK)	80.9	87.7	6.8	6,225.8	7,161.6	935.8
Sun Country Airlines d/b/a MN Airlines (SY)^	59.9	60.1	0.2	779.1	815.9	36.9
United Air Lines Inc. (UA)	82.3	74.8	-7.5	30,845.3	27,212.6	-3,632.7
System Cargo Majors	24.2	17.1	-7.1	10,676.5	7,141.8	-3,534.7
Atlas Air Inc. (5Y)	29.0	26.1	-2.9	1,116.6	1,220.4	103.8
Federal Express Corporation (FX)	6.1	5.3	-0.7	1,684.8	1,472.9	-211.9
Kalitta Air LLC (KAQ)^	2.0	0.9	-1.1	23.2	10.1	-13.1
United Parcel Service (5X)	65.3	47.0	-18.3	7,010.1	3,487.5	-3,522.6
USA Jet Airlines Inc. (U7)^	129.6	125.7	-3.9	841.7	950.9	109.2
System All Majors	60.0	55.7	-4.3	122,171.2	112,359.1	-9,812.1

ENDNOTES

- * Not Calculated on a quarterly basis.
- ** Cannot be calculated because balance sheet data not submitted on an entity basis. Data presented only on a system basis.
- ++ Not calculated for all-cargo carriers.
- & Meaningful calculation cannot be made.
- ^ Carrier specific note. See below.

Kalitta Air LLC (KAQ)

Effective 2020q1, Kalitta Air LLC (KAQ) began reporting as a Group III Major. All Form 41 Traffic and Financial Data collected by the Department for Kalitta Air LLC are included in this report.

Sun Country Airlines d/b/a MN Airlines (SY)

Effective 2024q1, Sun Country Airlines d/b/a MN Airlines (SY) began reporting as a Group III Major. All Form 41 Traffic and Financial Data collected by the Department for Sun Country Airlines are included in this report.

USA Jet Airlines Inc. (U7)

Effective 2023q1, USA Jet Airlines Inc. (U7) began reporting as a Group III Major. All Form 41 Traffic and Financial Data collected by the Department for USA Jet Airlines Inc. are included in this report.

Carrier List

Passenger

AS	Alaska Airlines Inc.
G4	Allegiant Air
AA	American Airlines Inc.
DL	Delta Air Lines Inc.
MQ	Envoy Air
EV^	ExpressJet Airlines LLC d/b/a aha!
F9	Frontier Airlines Inc.
HA	Hawaiian Airlines Inc.
B6	JetBlue Airways
YX	Republic Airline
OO	SkyWest Airlines Inc.
WN	Southwest Airlines Co.
NK	Spirit Air Lines
SY^	Sun Country Airlines d/b/a MN Airlines
UA	United Air Lines Inc.

Cargo

5Y	Atlas Air Inc.
FX	Federal Express Corporation
KAQ^	Kalitta Air LLC
PO	Polar Air Cargo Airways
5X	United Parcel Service
U7^	USA Jet Airlines Inc.

Explanation of Line Items

Line #	Reported By	Description of Line Item	Line Item Derivation
			FINANCIAL RESULTS: (\$Millions)
1	All	Operating Revenues	Total Operating Revenues (P012 Account 49990)
2	All	Operating Expenses	Total Operating Expenses (P012 Account 71990)
3	All	Operating Profit (Loss)	Operating Profit Or Loss (P012 Account 79990)
4	All	Net Income (Loss)	Net Income (P012 Account 98990)
			TRAFFIC: (Billions)
5	Combi Only	RPMS - Scheduled Rev. Svc.	Scheduled Revenue Passenger Miles (T100_K_RPM_140)
	Cargo Only	RTMs - Scheduled Rev. Svc.	Scheduled Revenue Ton Miles (T100_K_RTM_240)
6	Combi Only	ASMs - Scheduled Rev. Svc.	Scheduled Available Passenger Miles (T100_K_ASM_320)
	Cargo Only	ATMs - Scheduled Rev. Svc.	Scheduled Available Ton Miles (T100_K_ATM_280)
7	All	RTMs (All Svc.)	RTMs (All Svc.) (T100_Z_RTM_240)
8	All	ATMs (All Svc.)	ATMs (All Svc.) (T100_Z_ATM_280)
			YIELD & UNIT COST & PROFITS: (Cents)
9	All	Operating Revenue per RTM	<u>Operating Revenues (P012 Account 49990)</u> All Services Revenue Ton-Miles (T100_Z_RTM_240)
10	All	Operating Expense per RTM	<u>Operating Expenses (P012 Account 71990)</u> All Services Revenue Ton-Miles (T100_Z_RTM_240)
11	All	Operating Profit (Loss) per RTM	<u>Operating Profit (P012 Account 79990)</u> All Services Revenue Ton-Miles (T100_Z_RTM_240)
12	All	Operating Expense per ATM	<u>Operating Expenses (P012 Account 71990)</u> All Services Available Ton-Miles (T100_Z_ATM_280)
13	All	Passenger Revenue per RPM	<u>Passenger Revenues (schd service) (P012 Account 39010)</u> Scheduled Revenue Passenger Miles (T100_K_RPM_140)

Explanation of Line Items

Line #	Reported By	Description of Line Item	Line Item Derivation
			FINANCIAL RATIOS:
14	All	Operating Revenues to Total Investment	<u>Total Operating Revenues (P012 Account 49990)</u> (Current Maturities of Long-Term Debt (B010 Account 20000) + Current Obligations Under Capital Leases (B010 Account 20800) + Long-Term Debt (B010 Account 22100) + Advances from Associated Companies (B010 Account 22400) + Noncurrent Obligations Under Capital Leases (B010 Account 22800) + Net Stockholders' Equity (B010 Account 29950) (A five-quarter average is used)
15	All	Times Interest Earned	Income Before Income Tax (P012 Account 89990) + Interest on Long-Term Debt and Capital Leases <u>(P012 Account 81810) + Other Interest Expense (P012 Account 81820)</u> Interest On Long-Term Debt and Capital Leases (P012 Account 81810) + Other Interest Expense (P012 Account 81820)
16	All	Current Assets to Current Liabilities	<u>Total Current Assets (B010 Account 14990)</u> Total Current Liabilities (B010 Account 21990)
17	All	No. of Days Cash Coverage of Cash Exp.	<u>Cash (B010 Account 10100) + Short Term Investments (B010 Account 11000)</u> (Total Operating Expenses (P012 Account 71990) + Depreciation And Amortization (B010 Account 70000) / 365
			FINANCIAL PERCENTAGES:
18	All	Operating Profit (Loss) to Operating Revenue	<u>Operating Profit Or Loss (P012 Account 79990)</u> Total Operating Revenues (P012 Account 49990)
19	All	Net Income to Stockholders Equity	<u>Net Income (P012 Account 98990)</u> Net Stockholders' Equity (B010 Account 29950)
20	All	Corporate Return on Investment	(Net Income minus Interest Expense) / Total Investment
		Corporate Return on Investment (Calculation Details)	Net Income (P012 Account 98990) - (Interest On Long Term Debt And Capital Leases <u>(P012 Account 81810) + Other Interest Expense (P012 Account 81820)</u>) Current Maturities Of Long-Term Debt (B010 Account 20000) + Current Obligations Under Capital Leases (B010 Account 20800) + Long Term Debt (B010 Account 22100) + Advances From Associated Companies (B010 Account 22400) + Nonrecurrent Obligations Under Capital Leases (B010 Account 22800) + Net Stockholders' Equity (B010 Account 29950)
21	All	Debt to Total Investment	Current Maturities Of Long-Term Debt (B010 Account 20000) + Current Obligations Under Capital Leases (B010 Account 20800) + Long Term Debt (B010 Account 22100) + Advances From Associated Companies (B010 Account 22400) + <u>Nonrecurrent Obligations Under Capital Leases (B010 Account 22800)</u> Current Maturities Of Long-Term Debt (B010 Account 20000) + Current Obligations Under Capital Leases (B010 Account 20800) + Advances From Associated Companies (B010 Account 22400) + Nonrecurrent Obligations Under Capital Leases (B010 Account 22800) + Net Stockholders' Equity (B010 Account 29950) + Long Term Debt (B010 Account 22100)

Explanation of Line Items

Line #	Reported By	Description of Line Item	Line Item Derivation
			LOAD FACTOR: (%)
22	All	Actual Passenger Load Factor (Sch. Svc.)	$\frac{\text{Scheduled Revenue Passenger Miles (T100 K RPM 140)}}{\text{Scheduled Available Passenger Miles (T100 K_ASM_320)}}$
23	Combi Only	Breakeven Passenger Load Factor (Sch. Svc.)	$\frac{(\text{Total Operating Revenues (P012 Account 49990)} + \text{Transport Revenues Expenses (P012 Account 71000)} - (\text{Transport Revenues - Passenger (P012 Account 39010)} * .90) - \text{Total Operating Expenses (P012 Account 71990)} - \text{Transport Related Revenues (P012 Account 48980)}) * (\text{Scheduled Revenue Passenger Miles (T100 K RPM 140)} / \text{Scheduled Available Passenger Miles (T100 K_ASM_320)})}{(\text{Transport Revenues - Passenger (P012 Account 39010)} * .90)}$
	Cargo Only	Ton Load Factor (All Svc.)	$\frac{\text{Overall RTMs (All Svc.) (T100 Z RTM 240)}}{\text{Overall ATMs (All Svc.) (T100 Z_ATM_280)}}$
			Employment & Productivity:
24	All	Employment, Total Weighted Avg CY	$\frac{((\text{P1a Account Z f99007}) + ((\text{P1a Account Z-f99008})/2))}{\text{Months in Period (3 Quarter; 12 Month Ended)}}$
25	All	Overall RTM's per Employee (000)	$\frac{\text{Overall RTMs (All Svc.) (T100 Z RTM 240)}}{((\text{P1a Account Z f99007}) + ((\text{P1a Account Z-f99008})/ 2)) / \text{Months in Period (3 Quarter; 12 Month Ended)}}$
			Change Over Comparable Period 12 Month Earlier:
26	All	Operating Revenues (%)	Total Operating Revenues (P012 Account 49990) (CY/PY)
27	All	Operating Expenses (%)	Total Operating Expenses (P012 Account 71990) (CY/PY)
28	All	Operating Profit (Loss) (in Millions \$)	Operating Profit Or Loss (P012 Account 79990) (CY/PY)
29	All	Net Income (Loss) (in Millions \$)	Net Income (P012 Account 98990) (CY/PY)
30	All	RPMS (Sch. Svc.) (%)	Scheduled Revenue Passenger Miles (T100_K_RPM_140) (CY/PY)
31	All	ASMs (Sch. Svc.) (%)	Scheduled Available Passenger Miles (T100_K_ASM_320) (CY/PY)
32	All	Operating Revenues per RTM (%)	$\frac{\text{Operating Revenues (P012 Account 49990)}}{\text{System Ton-Miles (T100_Z_RT M_240)} (CY/PY)}$
33	All	Operating Expense per RTM (%)	$\frac{\text{Operating expenses (P012 Account 71990)}}{\text{System Available Ton-Miles (T100_Z_ATM_280)} (CY/PY)}$
34	All	Passenger Revenue per RPM (Sch. Svc.) (%)	$\frac{\text{Passenger Revenues (schd service) (P012 Account 39010)}}{\text{Scheduled Revenue Passenger Miles (T100_K_RPM_140)} (CY/PY)}$