

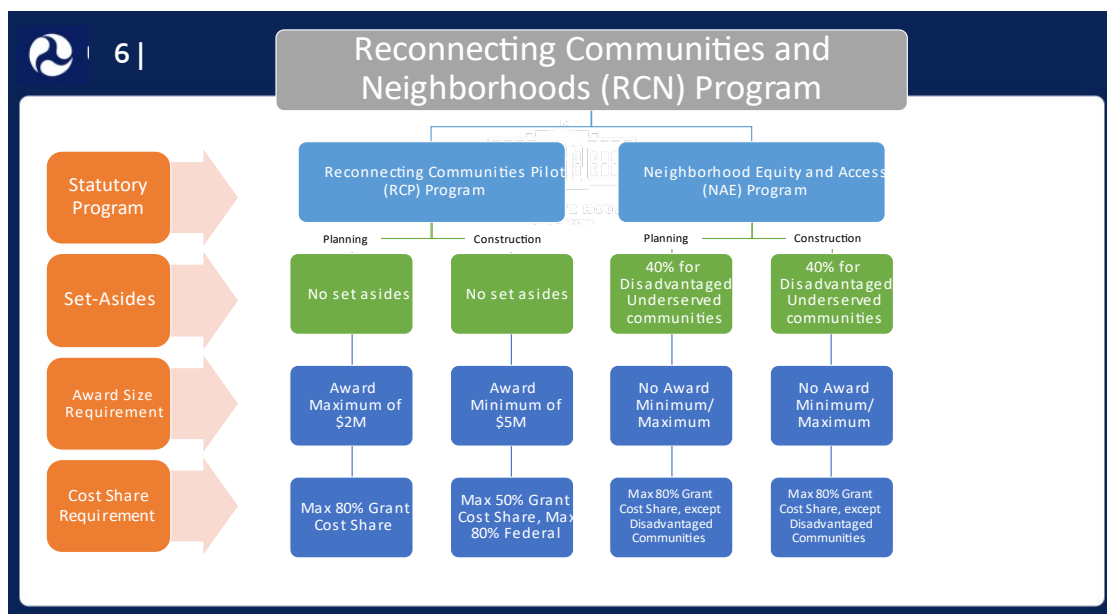


**THRIVING
COMMUNITIES
PROGRAM**



Reconnecting Communities Resource Sheet

The Bipartisan Infrastructure Law (BIL) created a new \$1 billion Reconnecting Communities Pilot Program, and the Inflation Reduction Act (IRA) created a similar \$3.155 billion Neighborhood Access and Equity Program to help specifically fund projects that retrofit, remove or remediate infrastructure that creates barriers and other harmful impacts that isolate and separate neighborhoods and communities. Both the RCP and NAEP offer planning grants, capital grants, and technical assistance through a combined **Reconnecting Communities and Neighborhoods (RCN)** notice of funding opportunity. Other DOT grant and formula programs can also be used to support these types of projects.



Resources

- [RCN program site and notice of funding opportunity](#) (Applications being accepted through September 29, 2023)
- [Reconnecting Communities and Neighborhoods Webinar Series](#)
- [RCN Frequently Asked Questions and How to Apply](#)
- [Past, Present, and Future of Reconnecting Communities: and Interactive Story Map](#)



RCN Program Structure

Three grant types under RCN (UP to \$3.155B)

Grant #1: Community Planning Grants (Up to \$135M)

- Funds for planning activities to support future construction projects
- Would allow for innovative community planning to address localized transportation challenges

Grant #2: Capital Construction Grants (Up to \$2.57B)

- Funds for reconnecting-focused projects
- Would include funding for smaller projects focused on reducing environmental harm and improving access

Grant #3: Regional Partnerships Challenge Grants (Up to \$450M)

- Funds for projects to encourage regional collaboration and innovation among partners to address regional challenges (vs. one facility)
- Designed to collaboratively focus regions on equitable access and mobility challenges anti-displacement and GHG reduction
- Planning or Capital Grants

The Reconnecting Communities Institute will offer free technical assistance to RCP grantees and communities interested in pursuing a reconnection project – **Opening Fall 2023!** Additional technical assistance resources available at the DOT Navigator

Additional Funding Resources

Over 20 DOT formula or discretionary programs can be used to support reconnection planning and construction projects, including the following:

- Transit Capital Investment Grants (CIG) (FTA)
- Bridge Improvement Program (FHWA)
- Consolidated Rail Infrastructure and Safety Improvements Program (CRISI) (FRA)
- Railroad Crossing Elimination Grant Program (FRA)
- Rebuilding American Infrastructure with Sustainability and Equity Program (RAISE) (OST)
- Surface Transportation Block Grant (FHWA)
- Explore additional options at the DOT Discretionary Dashboard