

# Secure Data Commons Capabilities

Secure Data Commons (SDC) enables collaborative and controlled integration and analysis of research data at the moderate baseline security level. FedRAMP security impact level, modern, includes upholding security controls for personally identifiable information (PII) and confidential business information (CBI) data. SDC offers authorized and controlled access to individual datasets and its associated metadata. Additionally, SDC supports the following data transfers: real-time (streaming), batch (daily, weekly), and ad-hoc (occasional). SDC is the only Data Science Platform with an Authority to Operate (ATO) that uses open architecture, and features open source, scalable, cloud-based data storage, management, analysis and visualization technologies.



## Datasets Available

- **WAZE** – All states in the US
- **CVP** – Wyoming
- **OSS4ITS** – United States
- **FRA-ARDS** – All areas under authority of the Federal Railway Administration

## Active & Past Projects

- FRA ARDS
- FHWA OSS4ITS
- CVP – WYDOT
- Volpe – IE
- WAZE Projects
- CARMA - FHWA
- BTS-NOAA
- BTS-NCAR
- BTS SAV
- CVP-NYC
- CVP-MD
- CVP-THEA
- CVP-TTI

## Additional Information

What is the SDC -

<https://www.transportation.gov/data/secure>

SDC Web Portal -

<https://beta-portal-sdc.dot.gov/home>

## QUESTIONS?

Dan Morgan

703-887-9365

[Daniel.morgan@dot.gov](mailto:Daniel.morgan@dot.gov)

SDC Support

[Sdc-support@dot.gov](mailto:Sdc-support@dot.gov)

## Our Vision

The Secure Data Commons (SDC) will be used as the premier data collaboration source for the transportation challenges we face in the 21st century. We want to bring together transportation experts from all around the world to provide each other with new insights, perspectives, and analyses that cut across all modes and a program's portfolio.



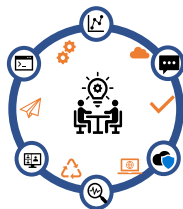
## Data & Visualization

The SDC will allow you to leverage cloud capabilities to share and collaborate with users both inside and outside of the DOT using the same data and same analysis tools in a secured area. Additionally, you will be able to use visualization tools to gain insights across projects, programs, and modes.



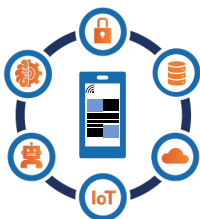
## Security

The SDC has the capability to store and analyze sensitive data with fine-grained secured access controls and secure data export processes. Additionally, data cannot leave the SDC without approval from a Data Steward to prevent data leakage when exporting data.



## Open-Source Collaboration

We are a community working towards a shared vision or goal at DOT. We have a commitment to be a good open-source project and want to collaborate with our partners. Open Source will reduce costs, streamline development, apply uniform standards, and ensure consistency in creating and delivering information. We invite project owners to share on how we can improve the SDC, so we are continually growing the platform and incorporate new ideas.



## Your input matters

The SDC is continuously improving. Every quarter, we conduct a Customer Advisory Board where you will be able to communicate your priorities and much needed enhancement features to support your research needs. We take seriously the input from our users and as we build new features, we look first at features that users have recommended.



## SDC Support

Our SDC Support Team is here to support you every step of your project's lifecycle: Prospective, Plan, Discovery, Onboarding, Active, and /Export/Retire. If you encounter any problems or questions on any tools in the SDC, the support team will work with you to solve the problem.