

TRANSPORTATION EQUITY AT USDOT

INFORMATION SESSION

U.S. DEPARTMENT OF TRANSPORTATION (USDOT)

JUNE 25, 2021





Introductory Remarks

Secretary Pete Buttigieg



PURPOSE OF TODAY'S EVENT

- To provide a public forum highlighting the work that is being conducted at the U.S. USDOT to advance racial equity and economic inclusivity
- To inform participants about the Request for Information that is currently available for public review and comment

Note: this session is being recorded

AGENDA

Secretary Buttigieg Welcome

Executive Order 13985 Update

Irene Marion, Director of Civil Rights

Christopher Coes, Principal Deputy Assistant Secretary for Transportation Policy

Request for Information

Stephanie Lawrence, Director, Statistical & Economic Analysis

Maya Sarna, Transportation Policy Analyst

Facilitated Q & A

Wrap Up





Questions for you:



EQUITY EXECUTIVE ORDER

- On January 20, 2021, President Biden signed [Executive Order \(EO\) 13985](#), “Advancing Racial Equity and Support for Underserved Communities Through the Federal Government.”
- USDOT will undertake a **comprehensive approach** to advance racial equity for all, including individuals who have been **historically underserved** and **adversely affected** by persistent poverty or income inequality.
- USDOT will assess whether, and to what extent, its programs and policies **perpetuate systemic barriers to opportunities** and benefits for people of color and other underserved groups.
- These assessments will better equip USDOT to develop policies and programs that **deliver resources and benefits equitably**.

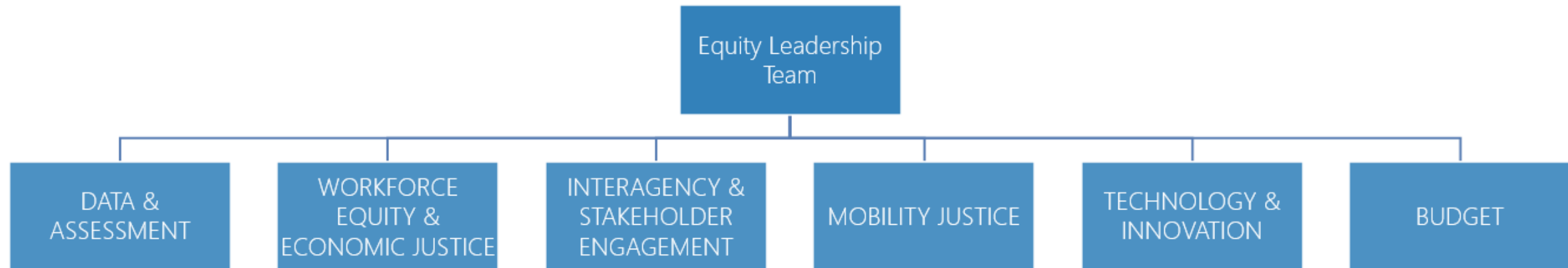
IMPLEMENTATION APPROACH & STATUS

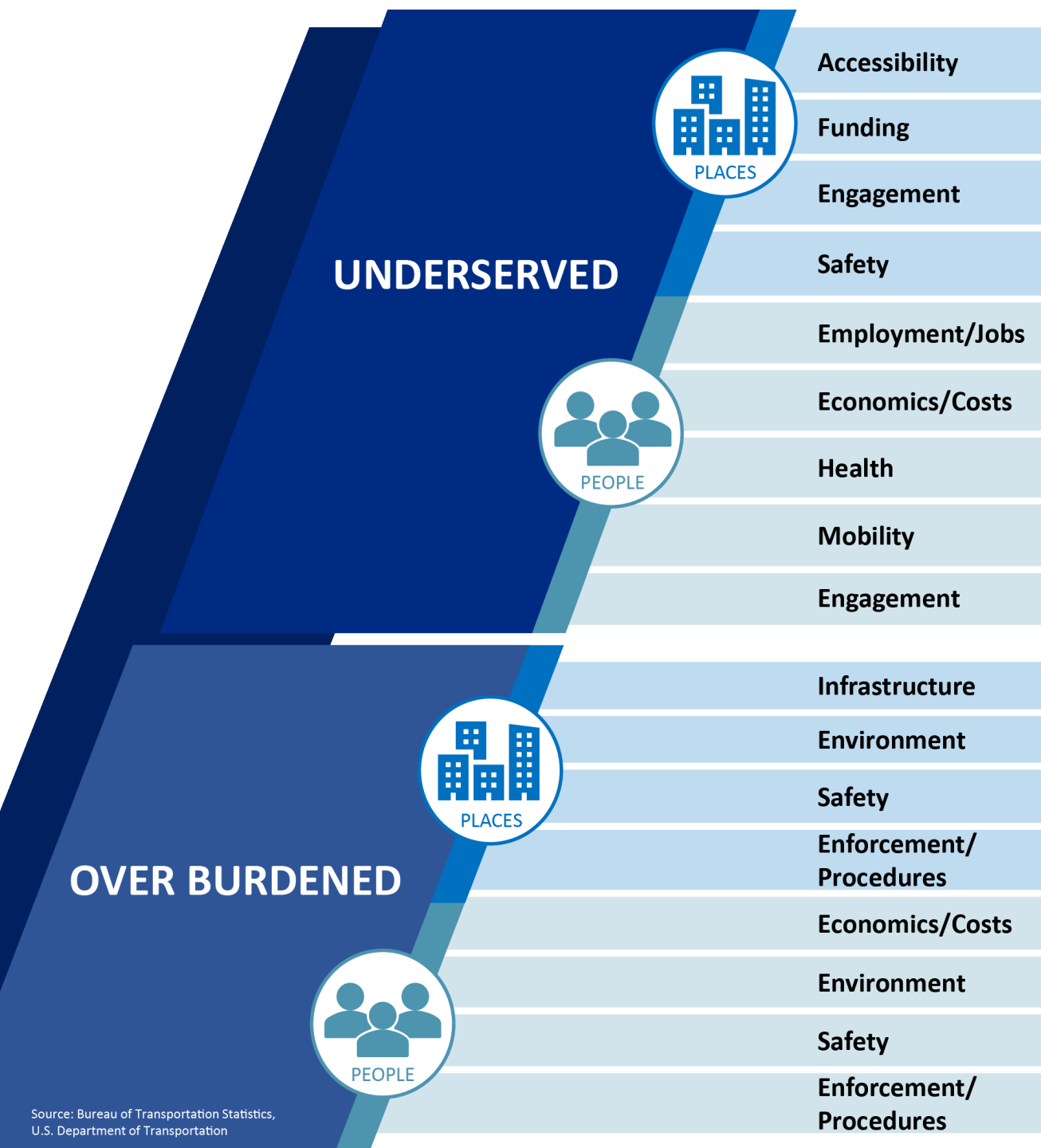
Equity Leadership Team

- Senior appointees overseeing EO implementation

Equity Task Force

- USDOT-wide career staff involved in the implementation of the EO across **six areas**





WHO IS THIS WORK ABOUT?

Underserved, Overburdened,
Disadvantaged—awareness for
communities and individuals



Investment Benefits—targeted for
underserved, overburdened,
disadvantaged communities and
individuals

FOCUS OF OUR WORK

Expanding Access

Reimagine Access From workforce to procurement, jobs and education, focus on removing barriers for individuals and communities.

Wealth Creation

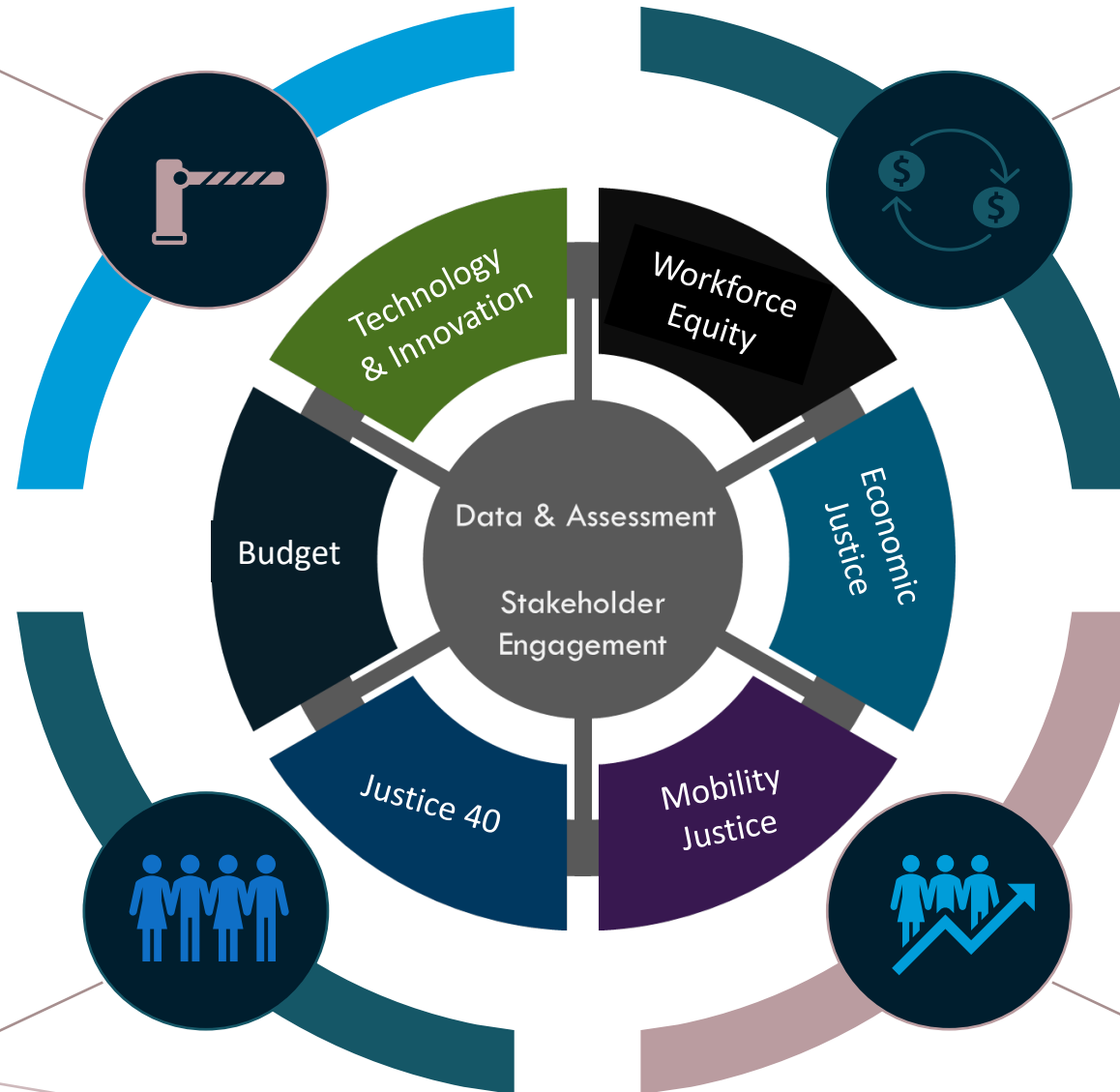
Reimagine Economic Growth Ecosystems Mitigate or negate the effects of structural obstacles to building wealth.

Reimagine Sustainable Development Patterns Promote targeted interventions in areas of mobility justice, economic justice, climate justice.

Interventions

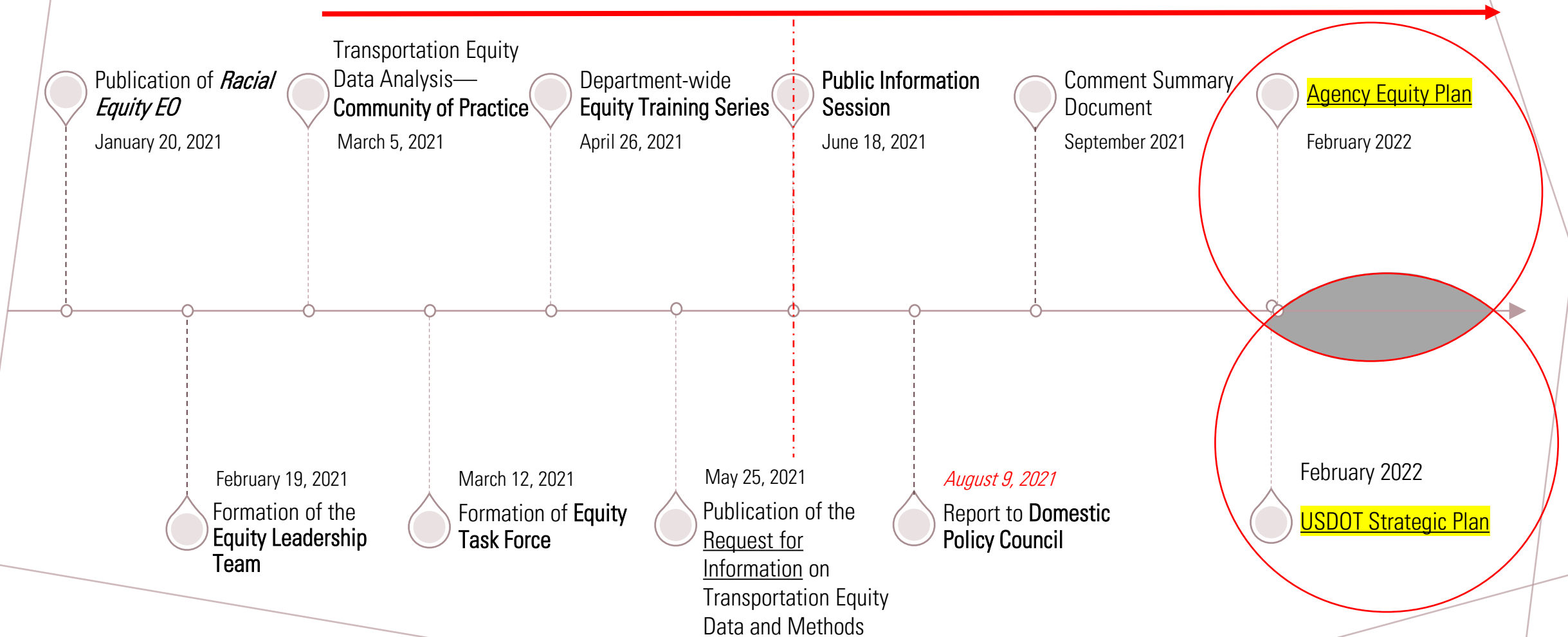
Power of Community

Reimagine Engagement Engage with communities and thought leaders to develop channels for advocacy not previously utilized.



EQUITY EXECUTIVE ORDER—ACTIONS

Meeting w/ equity groups, on-going stakeholder meetings



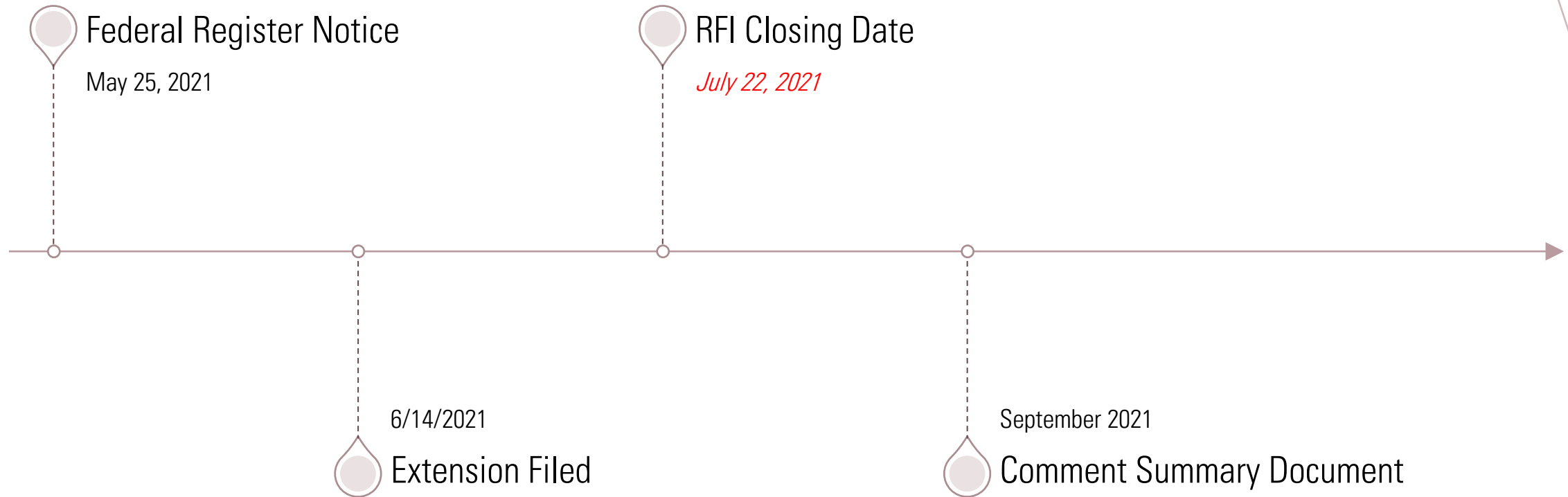


Questions for you:

*REQUEST FOR
INFORMATION
TRANSPORTATION EQUITY
DATA & METHODS*



RFI TIMELINE



GENERAL GUIDANCE

Definitional terms carried into the Request for Information from Equity Executive Order:

- The term “equity” means the **consistent and systematic fair, just, and impartial treatment of all individuals**, including individuals who belong to **underserved communities** that have been denied such treatment, such as Black, Latino, and Indigenous and Native American persons, Asian Americans and Pacific Islanders and other persons of color; members of religious minorities; lesbian, gay, bisexual, transgender, and queer (LGBTQ+) persons; persons with disabilities; persons who live in rural areas; and persons otherwise adversely affected by persistent poverty or inequality.
- The term “underserved communities” refers to **populations sharing a particular characteristic**, as well as geographic communities, that have been **systematically denied the full opportunity** to participate in aspects of **economic, social, and civic life**, as exemplified by the list in the preceding definition of “equity.”

TOOLS TO MEASURE EQUITY

The Department seeks ways to directly measure:

- Equity in Transportation investments, policies, and programs
- Systemic barriers to opportunities and benefits
- Affordability
- Reliability
- Social Cost of Inequity



DATA CONSIDERATIONS

From the Request for Information:

- What actions can the Department take with its data to make it more useful for equity research and analysis?
- How should the Department develop a data collection framework, gather new and existing data, set data standards, and analyze and aggregate it into useful information for policymaking?
- What are approaches that USDOT can take to ensure that individuals from underserved populations are represented in our data collection efforts?





WORKFORCE DATA

From the Request for Information:

- What high-quality career pathways programs or educational pipelines have state and local governments utilized or implemented to diversify their transportation workforce?
- What practices has the transportation industry taken to increase diversity and retain individuals from underserved populations within its workforce?
- What type of data should we collect to measure the success of workforce programs?

- <https://www.youtube.com/watch?v=290-jouzwDc>
- **Submitting a formal comment:**
- Go to Regulations.gov or use this [link to access the RFI docket](#) directly.
 1. In the search bar of regulations.gov, type in docket # DOT-OST-2021-0056
 2. The search will open the results window; selecting the notice will bring up the docket details page
 3. Selecting 'comment' will take you to the comment submission page

- <https://www.youtube.com/watch?v=290-jouzwDc>
- **Submitting a formal comment:**
- Go to Regulations.gov or use this [link to access the RFI docket](#) directly.
 1. In the search bar of regulations.gov, type in docket # DOT-OST-2021-0056
 2. The search will open the results window; selecting the notice will bring up the docket details page
 3. Selecting 'comment' will take you to the comment submission page

4

You are commenting on a Notice by the Department of Transportation
Request for Information: Transportation Equity Data

Comment Period Ends: 15 Days

Write a Comment

Commenter's Checklist

Comment*

Start typing comment here....

What is your comment about?

Select a Comment Category

Attach Files

You can attach up to 20 files, but each file cannot exceed 10MB. Valid file types include: bmp, docx, gif, jpg, jpeg, pdf, png, psd, rtf, sgm, tif, tiff, txt, wps, xlsx, xml.

Drop files here or

Browse...

Email Address

Email Address

☐ Opt to receive email confirmation of submission and tracking number? (We will never post on Regulations.gov or share your email with anyone else.)

Tell us about yourself! I am...*

(Select an identity below)



An Individual
If you or another single person is the author



An Organization
A company, organization, or government agency

If

or

as

reCAPTCHA *

☐ I'm not a robot



REGULATIONS.gov

Privacy Policy



By submitting a comment, you agree to the [terms of participation](#) and [privacy notice](#). Any personal information included on Regulations.gov and may be used to contact you for follow-up questions about your comment.

Submit Comment

HOW TO COMMENT ON THE DOCKET

4. Comment submission page:

- Responses are preferred in **one file submission**, in a question and response fashion.
- Preferred file format: Microsoft Word (.docx) or Adobe PDF (.pdf)
- Respondents are requested to provide the following information at the beginning of their response letter to this RFI:
 - Contact name / Institution name (**one comment per company/institution**)
 - Institution contact
 - Address, phone number, and email address
- Don't forget to submit the comment!

USDOT will **not** respond to individual submissions but will publish a compendium of responses.

Q&A

Please submit questions on the RFI in the Q&A pod; they will be directed to our presenters to answer in the order received.

Note: we may not have time to answer all questions during this event. We welcome additional questions via email at transportationdataequity@dot.gov.

Presenters:

- Irene Marion, Director of Civil Rights
- Christopher Coes, Principal Deputy Assistant Secretary for Transportation Policy
- Stephanie Lawrence, Director, Statistical & Economic Analysis
- Maya Sarna, Transportation Policy Analyst



WRAP UP

REQUEST FOR INFORMATION -- *PLEASE COMMENT ON THE DOCKET!*

- Available for comment at <https://www.regulations.gov/docket/DOT-OST-2021-0056>
- Open now through July 22, 2021
- Email questions to transportationdataequity@dot.gov
- Find this session recording and other transportation equity updates at www.transportation.gov/equity and sign up for our email list on Equity @ USDOT (bottom of webpage)

UPCOMING OPPORTUNITIES – *STAY TUNED!*

- Civil Rights Job Announcements for Title VI, Disability Justice and more coming soon